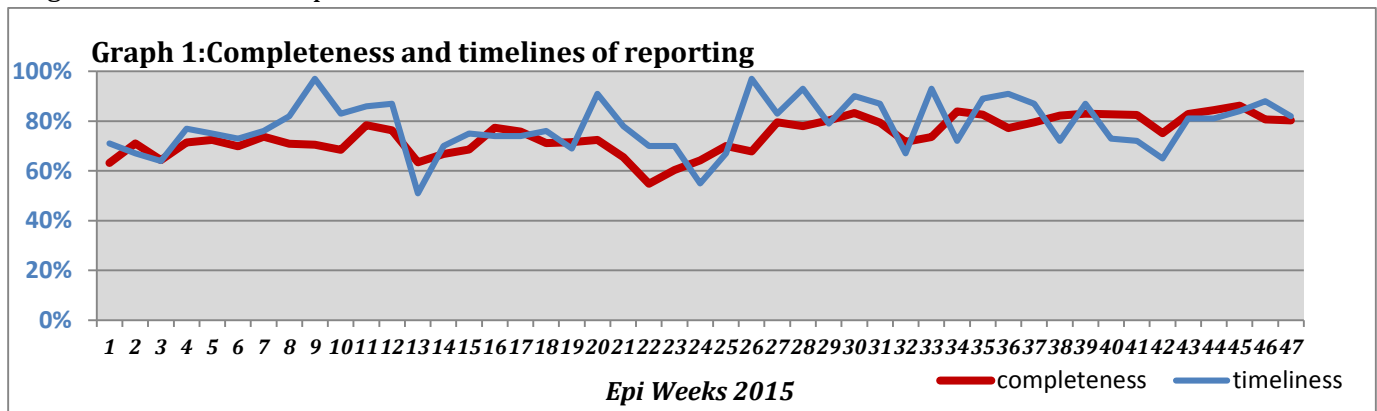


**Highlights:**

- ❖ 2 AFP cases were detected in Damascus and Lattakia.
- ❖ Raqqa did not reported for this week, due to security difficulties.
- ❖ The increase in Pertussis cases in DierEzoz have continued for this week.

**Completeness& Timeliness of Reporting**

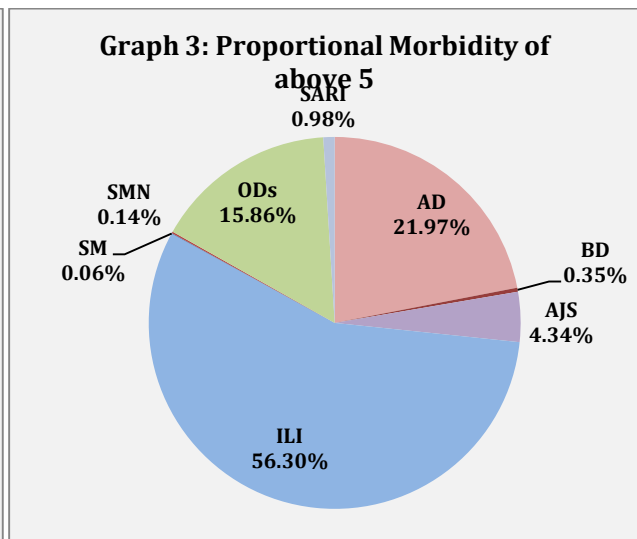
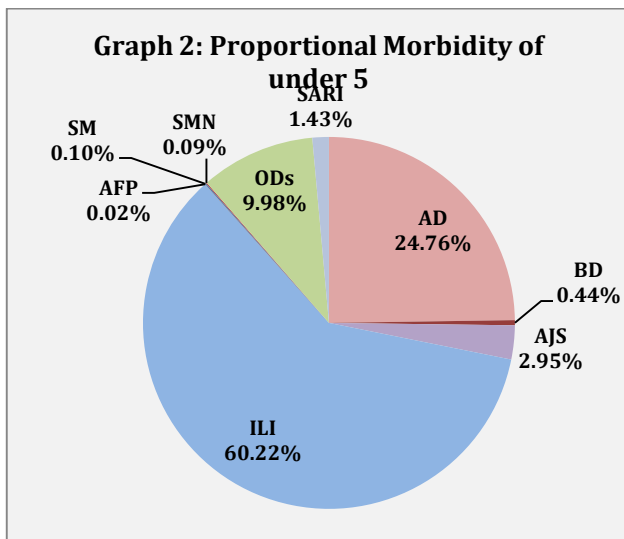
- ❖ The overall completeness of reporting was 80%; (795out of total 990 EWARS sentinel sites). (See Graph 1). 13 governorates have reported this week.



- ❖ Timeliness of reporting is 82%.

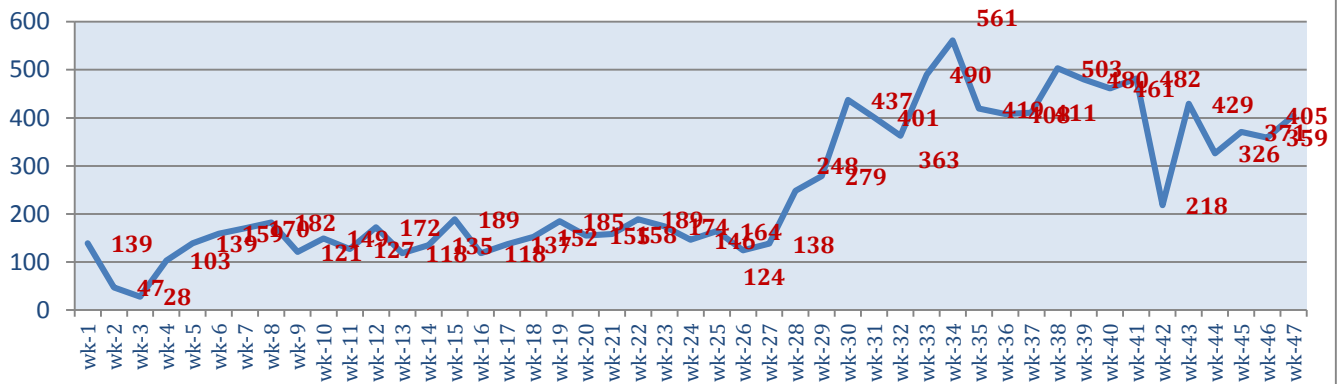
**The Morbidity Cases**

- ❖ Out of the 195,350 total consultations, a total of 22,588 EWARS notifiable cases were reported; of which 12,741 cases were Influenza like Illness (56%), 5,097 cases were Acute Diarrhoea (23%), 814 cases of AJS, 260 cases of Sever Acute Respiratory Infection, 86 cases of Bloody Diarrhoea, 26 cases of Suspected Meningitis, 17 cases of Suspected Measles, and 2 cases of Acute Flaccid Paralysis.
- ❖ Graphs 2 and 3 below show the proportional morbidity among < 5 and ≥ 5 year age groups respectively.

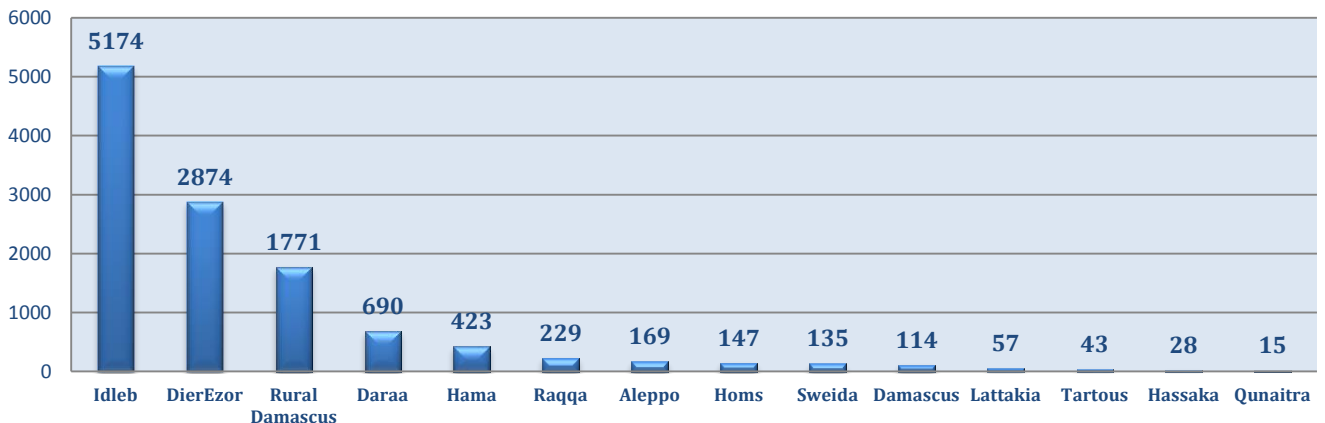


- ❖ AD constitutes (24.76%) among < 5 and (21.97%) among ≥ 5, while ILI constitutes (60.22%) of the cases among <5 and (56.3%) among ≥ 5.
- ❖ The cases were distributed equally among males and females. 55% of the cases were distributed among ≥5 age group.
- ❖ In total 3,545 cases were reported as “other diseases”. The most important diseases reported within this group were; 609 cases of Leishmaniasis (most of which were reported from Idleb 38%, Rural Damascus 18% and Hamah 13%), 405 cases of Typhoid (most of which were reported from Idleb 68%, DierEzor 20%, and Daraa 5%), 109 cases of Brucellosis (most of which were reported from DierEzor 37%, Idleb 16%, Rural Damascus 15%, and Daraa 10%), 104 cases of Pertussis (were reported from DierEzor 89% and Idleb 9%), and 27 cases TB.
- ❖ Graph 4 and 5 below show the trend analysis of Typhoid cases reported from all governorates and the distribution of cases per governorates respectively (no reporting from Raqqa in this week). It shows that the accumulative number of cases is higher in Idleb, DierEzor, (as well the number of the cases reported for this week).

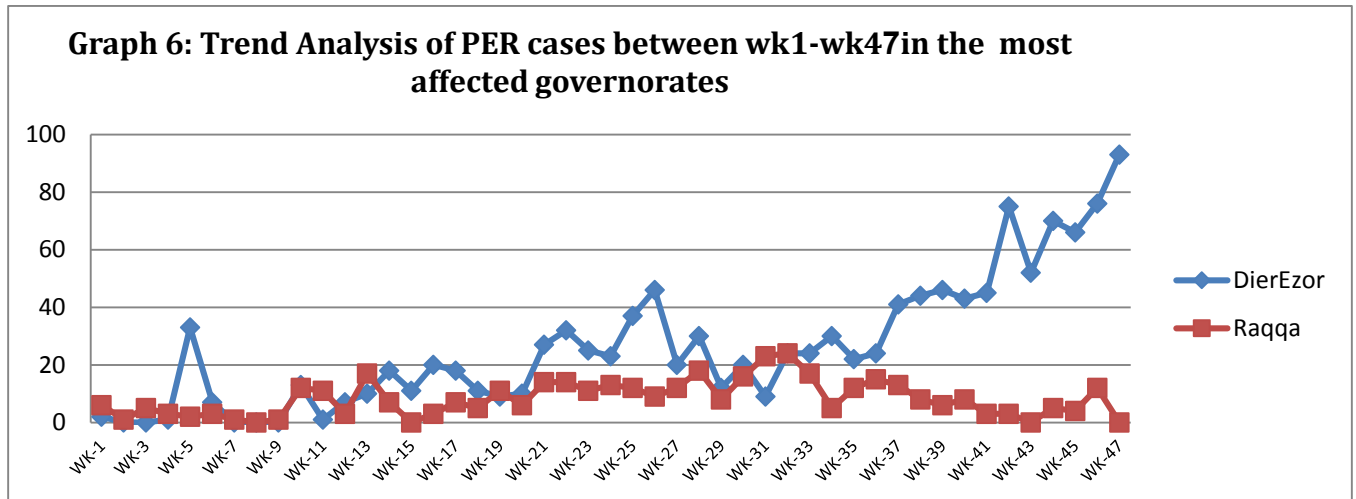
**Graph 4: Trend Analysis of Typhoid cases reported between wk1-wk47**



**Graph 5: Distribution of Typhoid cases from wk1-wk47**



- ❖ Graph 6 below shows the trend analysis of Pertussis cases reported from DierEzor and Raqqa (no reporting from Raqqa in this week).



## ❖ The Response

**Acute flaccid paralysis:** Stool sample were collected from AFP cases and sent to the reference lab in Damascus. Sub-National polio vaccination campaign will be implemented in the hard to reach areas between 22 and 26 of November. The annualized rate is 3 up to this week.

**Sever Acute Respiratory Infection:** samples were collected from six H1N1 suspected cases (SARI cases admitted to ICU) and sent to the reference lab in Damascus, the results showed negative for H1N1. WHO in collaboration with ministry of Health, has prepared and distributed Influenza awareness brochures and posters to be distributed in health facilities and among IDPs.

**Meningitis:** Cases were managed according to the national protocol; and investigation forms were filled for some cases but not all; it shows that most of the cases are viral meningitis not bacterial. Preventive therapy was provided as necessary for contacts of the probable bacterial meningitis.

**Pertussis:** difficulties to submit vaccine to hard to reach governorates (DierEzor, Idleb, and Raqqa) still prevent any response in affected areas.



**Table-1: Distribution of cases per age group, and by Governorate-week-47, 2015:**

Code	age group	Idleb	Hassaka	Raqqa	Sweida	Qunaitra	Lattakia	Aleppo	Hama	Homs	Daraa	Damascus	DierEzor	Rural Damascus	Tartous	Grand Total
AD	< 5	387	148	0	89	68	208	331	151	83	85	419	202	215	71	2457
	≥ 5	416	70	0	82	89	270	416	85	52	84	536	220	207	113	2640
BD	< 5	0	11	0	4	4	3	1	0	0	3	4	12	2	0	44
	≥ 5	0	9	0	6	10	2	0	0	0	0	3	11	1	0	42
AWD	< 5	0	0	0	0	0	0	0	0	0	0	0	0	0	0	0
	≥ 5	0	0	0	0	0	0	0	0	0	0	0	0	0	0	0
AJS	< 5	136	6	0	2	7	10	53	12	10	8	20	22	4	3	293
	≥ 5	125	2	0	7	10	60	112	34	6	24	67	14	17	43	521
ILI	< 5	579	99	0	316	9	1606	968	232	12	173	412	457	439	673	5975
	≥ 5	500	27	0	542	15	1335	760	270	13	211	682	492	644	1275	6766
AFP	< 5	0	0	0	0	0	1	0	0	0	0	1	0	0	0	2
	≥ 5	0	0	0	0	0	0	0	0	0	0	0	0	0	0	0
SM	< 5	0	0	0	0	0	1	0	1	0	0	0	6	2	0	10
	≥ 5	0	1	0	0	0	0	0	0	1	0	1	3	0	1	7
SMN	< 5	0	0	0	0	0	0	0	6	0	0	3	0	0	0	9
	≥ 5	0	0	0	0	0	0	0	11	0	0	5	0	0	1	17
SARI	< 5	0	31	0	3	0	2	0	22	0	0	83	1	0	0	142
	≥ 5	0	18	0	4	0	1	0	15	0	0	79	1	0	0	118
Others	< 5	477	19	0	0	75	21	312	47	9	23	28	74	117	10	1212
	≥ 5	449	48	0	24	113	195	451	267	110	71	159	165	224	57	2333
<b>Total Sum of &lt; 5</b>		1579	314	0	414	163	1852	1665	471	114	292	970	774	779	757	10144
<b>Total Sum of ≥ 5</b>		1490	175	0	665	237	1863	1739	682	182	390	1532	906	1093	1490	12444
<b>Total</b>		<b>3069</b>	<b>489</b>	<b>0</b>	<b>1079</b>	<b>400</b>	<b>3715</b>	<b>3404</b>	<b>1153</b>	<b>296</b>	<b>682</b>	<b>2502</b>	<b>1680</b>	<b>1872</b>	<b>2247</b>	<b>22588</b>

