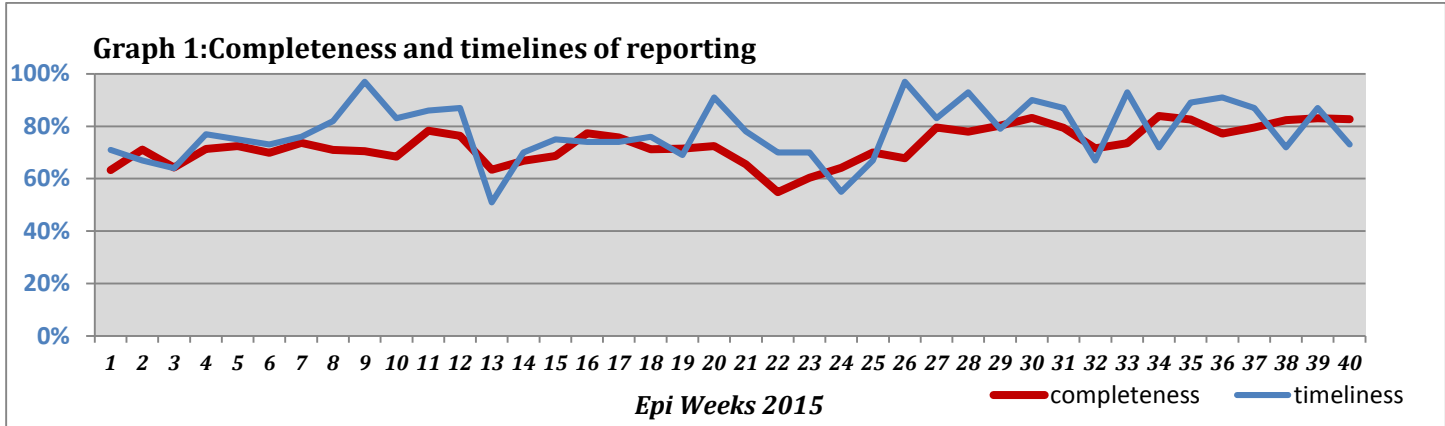


**Highlights:**

❖ 3 AFP cases were detected in Rural Damascus (2) and Homs (1).

**❖ Completeness & Timeliness of Reporting**

❖ The overall completeness of reporting was 83%; (808 out of total 977 EWARS sentinel sites). (See Graph 1). 14 governorates have reported this week.

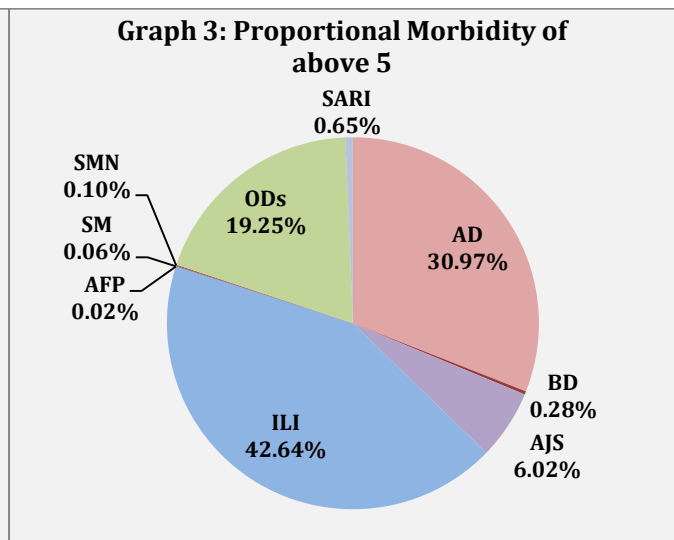
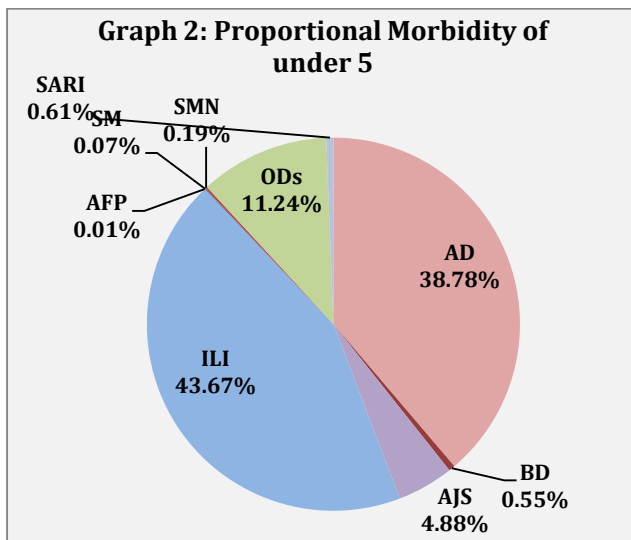


❖ Timeliness of reporting is 87%.

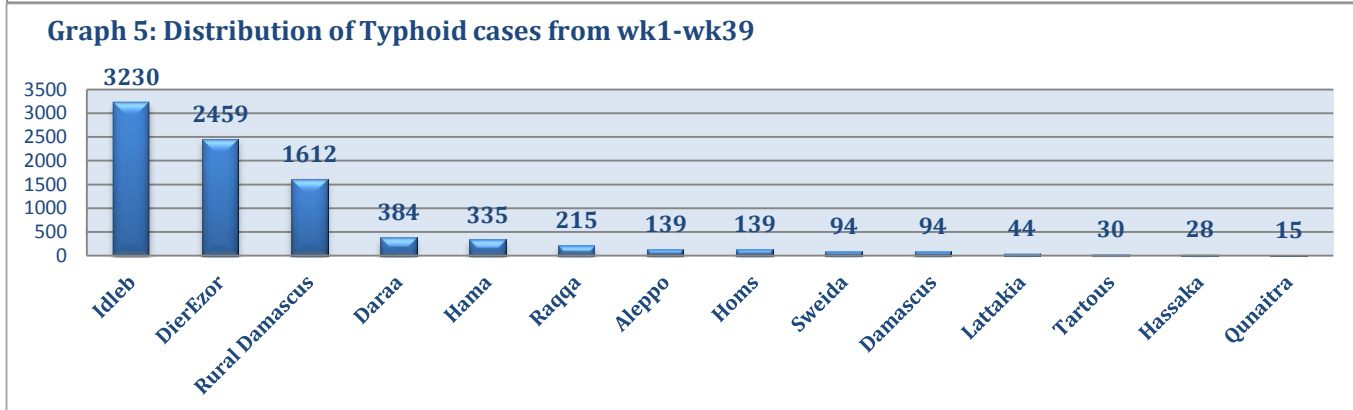
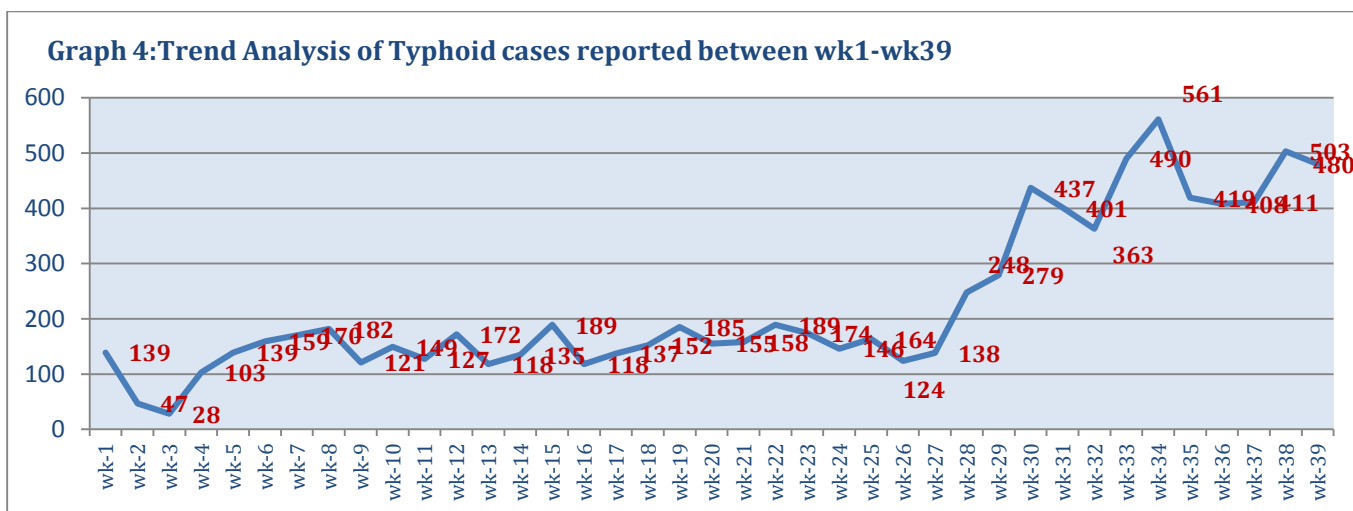
**❖ The Morbidity Cases**

❖ Out of the 152,709 total consultations, a total of 18,363 EWARS notifiable cases were reported; of which 8,025 cases were Influenza like Illness (44%), 6,431 cases were Acute Diarrhoea (35%), 1025 cases of AJS, 116 cases of Sever Acute Respiratory Infection, 76 cases of Bloody Diarrhoea, 27 cases of Suspected Meningitis, 12 cases of Suspected Measles, and 3 AFP cases. despite the increase in the absolute number of AJS cases, however, there is no real increase in AJS cases, as the proportional morbidity of total consultations is still stable and the apparent increase is due to the increase of the number of reporting sites.

❖ Graphs 2 and 3 below show the proportional morbidity among < 5 and ≥ 5 year age groups respectively.

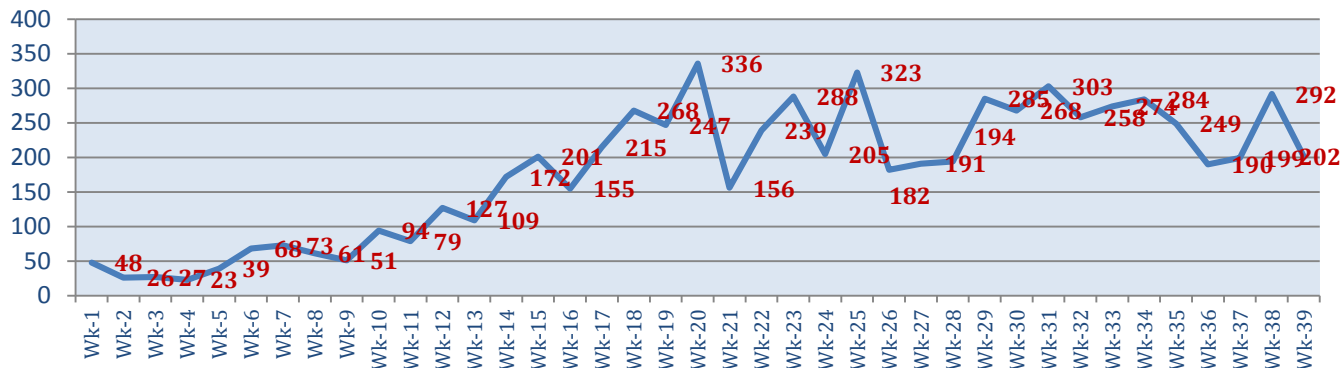


- ❖ AD constitutes (38.78%) among < 5 and (31%) among ≥ 5, while ILI constitutes (43.67%) of the cases among <5 and (42.64%) among ≥ 5.
- ❖ 51% of cases were distributed among males. 52% of the cases were distributed among ≥5 age group.
- ❖ In total 2,648 cases were reported as “other diseases”. The most important diseases reported within this group were; 480 cases of Typhoid (most of which were reported from Idleb 62%, Daraa 15%, and DierEzor 9%), 353 cases of Leishmaniasis (most of which were reported from Idleb 63%, Aleppo 18%, and Hamah 7%), 202 cases of Brucellosis (most of which were reported from Idleb 29%, Rural Damascus 15%, and Daraa 10%), 62 cases of Pertussis, and 11 cases of TB.
- ❖ Graph 4 and 5 below show the trend analysis of Typhoid cases reported from all governorates and the distribution of cases per governorates respectively. It shows that that the accumulative number of cases is higher in Idleb, DierEzor and Rural Damascus. In addition, the highest number of cases reported for this week were from Idleb.

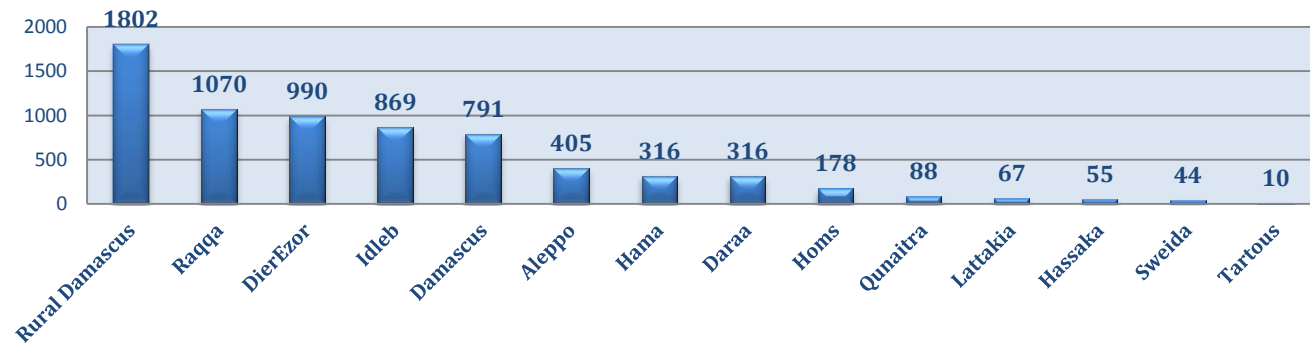


- ❖ Graph 6 and 7 below show the trend analysis of Brucellosis cases reported from all governorates and the distribution of cases per governorates respectively. It shows that the accumulative number of cases is higher in Rural Damascus, Raqqa and DierEzor while the highest number of cases reported for this week were from Idleb, Rural Damascus, and Daraa.

**Graph 6: Trend analysis of Brucellosis Cases between WK1-WK39**



**Graph 7: Distribution of Brucellosis Cases between WK1-WK39 per governorate**



## ❖ The Response

**Acute flaccid paralysis:** Stool sample were collected from the AFP cases and sent to the reference lab in Damascus. The next round of Polio national vaccination campaign will be implemented between 18 and 22 of October. The annualized rate is **3** up to this week.

**Bloody Diarrhoea:** Cases are not clustered; most cases were reported from inaccessible area in Dier Ezor. No samples were collected and cases were managed properly.

**Meningitis:** Cases were managed according to the national protocol; and investigation forms were filled for some cases but not all; it shows that most of the cases are viral meningitis not bacterial. Preventive therapy was provided as necessary for contacts of the probable bacterial meningitis.

**Typhoid:** Trainings on case management of Typhoid and other water and food borne diseases were conducted by ministry of health for the health workers in nine governorates.

**Table-1: Distribution of cases per age group, and by Governorate-week-39, 2015:**

Code	age group	Idleb	Hassaka	Raqqqa	Sweida	Qunaitra	Lattakia	Aleppo	Hama	Homs	Daraa	Damascus	DierEzor	Rural Damascus	Tartous	Grand Total	
AD	< 5	382	134	189	129	121	658	381	161	149	138	399	204	224	111	3380	6431
	≥ 5	302	27	48	162	103	462	519	115	93	119	522	212	181	186	3051	
BD	< 5	0	9	0	8	5	7	0	0	0	0	4	15	0	0	48	76
	≥ 5	0	4	0	6	9	2	0	0	0	1	5	1	0	0	28	
AWD	< 5	0	0	0	0	0	0	0	0	0	0	0	0	0	0	0	0
	≥ 5	0	0	0	0	0	0	0	0	0	0	0	0	0	0	0	
AJS	< 5	242	2	26	0	6	7	71	7	12	15	15	17	9	0	429	1025
	≥ 5	188	3	5	11	11	19	105	47	32	30	96	9	20	20	596	
ILI	< 5	392	119	0	165	89	1324	362	83	6	106	319	310	217	334	3826	8025
	≥ 5	334	34	0	228	199	1057	354	138	10	89	580	253	282	641	4199	
AFP	< 5	0	0	0	0	0	0	0	0	1	0	0	0	0	0	1	3
	≥ 5	0	0	0	0	0	0	0	0	0	0	0	0	2	0	2	
SM	< 5	0	0	3	0	0	1	1	0	0	0	0	1	0	0	6	12
	≥ 5	0	0	0	0	0	1	0	0	0	0	0	2	3	0	6	
SMN	< 5	0	0	9	0	0	1	2	1	2	0	2	0	0	0	17	27
	≥ 5	0	0	1	0	0	0	0	2	0	0	5	0	0	2	10	
SARI	< 5	33	0	0	2	0	0	0	5	0	0	10	2	0	0	52	116
	≥ 5	21	0	0	3	0	0	0	7	0	0	31	2	0	0	64	
Others	< 5	471	0	10	2	75	17	207	16	17	52	27	32	66	4	996	2648
	≥ 5	440	3	2	8	82	104	471	92	28	87	91	86	142	16	1652	
Total Sum of < 5		1520	264	237	306	296	2015	1024	273	187	311	776	581	516	449	8755	18363
Total Sum of ≥ 5		1285	71	56	418	404	1645	1449	401	163	326	1330	565	630	865	9608	
Total		2805	335	293	724	700	3660	2473	674	350	637	2106	1146	1146	1314	18363	

