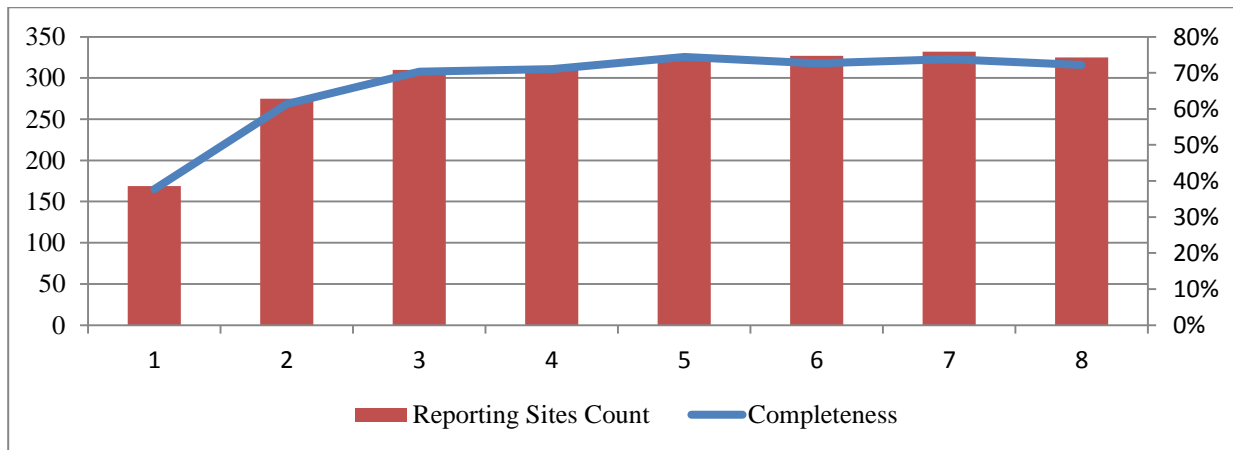


Highlights:

- ❖ 4 AWD cases were detected in Damascus and Hassaka.
- ❖ 2 AFP cases were detected in Damascus and Hamah.
- ❖ A remarkable re-increase in measles cases comparing with previous weeks.
- ❖ A notable increase in seasonal influenza A (H1N1) has been reported.

I. Completeness & Timeliness of Reporting

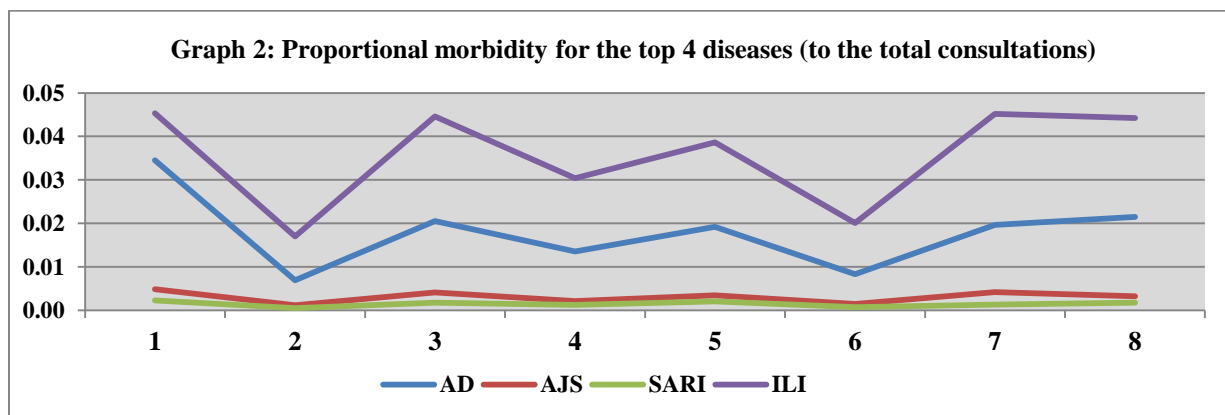
- ❖ The overall completeness of reporting was 72%; (326 out of total 450 EWARS sentinel sites) (see Graph 1). 13 governorates have reported this week.



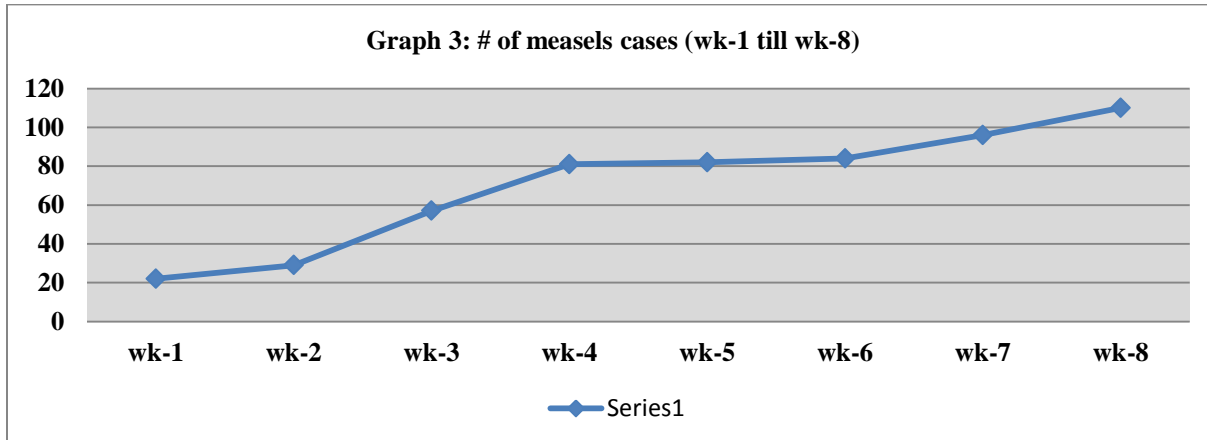
- ❖ Timeliness of reporting is 85%.

II. The Morbidity Cases

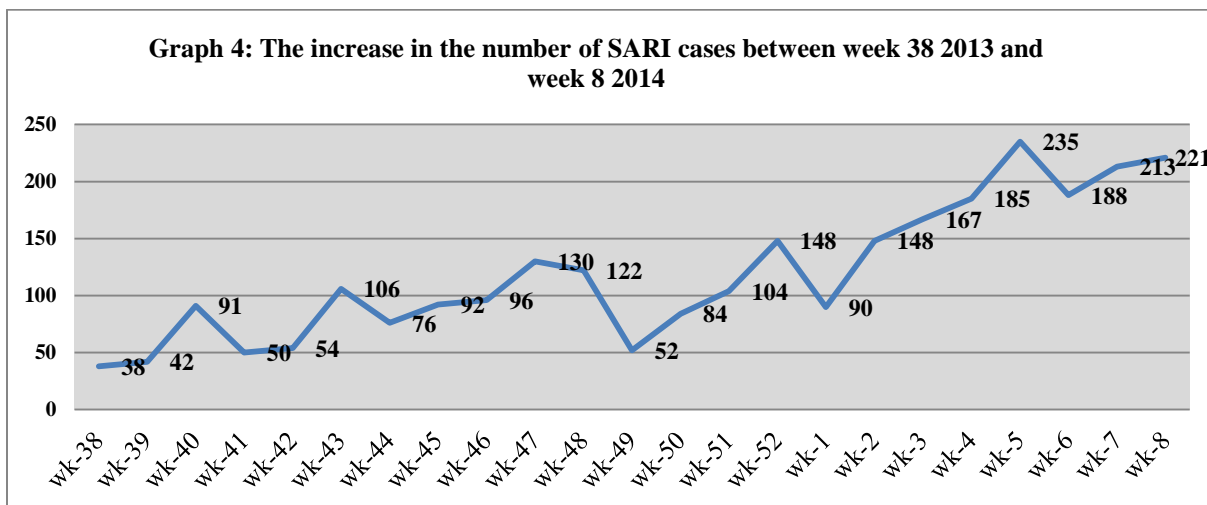
- ❖ Out of the 122,997 total consultations, a total of 10,412 cases were reported; of which 5,747 cases were Influenza like Illness (55%) and 2,733 cases were Acute Diarrhea (26%) and In addition, 433 cases of AJS, 221 cases of Sever Acute Respiratory Infection, 110 cases of Suspected Measles, 45 cases of Bloody Diarrhea, 22 cases of Meningitis, 4 cases of AWD and 2 AFP cases. Graph 2 shows the proportional morbidity for the top 4 diseases (to the total consultations, after excluding data of 27 health facilities that did not report total consultations).



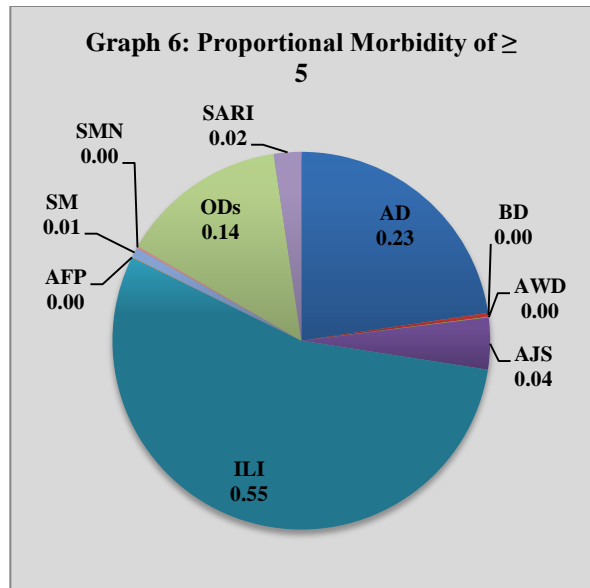
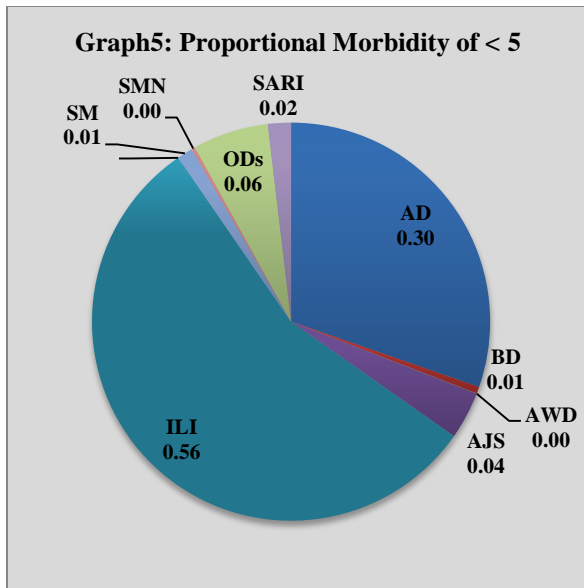
- A remarkable increase in the number of measles cases started to be noticed in different governorates as shown in the graph 3 below



- ❖ SARI cases in many governorates have also showed a notable increase since previous weeks as shown in the graph 4 below:



- ❖ In total, 1095 cases were reported as “other diseases”. The most important diseases reported within this group were: 214 cases of Leishmaniasis (most of which 42%, reported from Hamah) and 59 cases of Typhoid (most of which 78% reported in DeirEzor), In addition, there were 59 cases of Brucellosis and 14 cases of TB.
- ❖ 53% of the cases were distributed among ≥ 5 age group.
- ❖ The most common cases among < 5 were ILI (56%) and AD cases (30%). Graphs 5 and 6 below show the proportional morbidity among < 5 and ≥ 5 year age groups respectively.



- ❖ 52% of the cases were reported among males

III. The Response

- ❖ **AWD:** Cases detected are not clustered and were managed properly and recovered. Some of the reported cases were not associated with dehydration, thus it should be classified under AD. No samples were collected from the mentioned cases.
- ❖ **AFP:** Stool samples were collected from the AFP cases and sent to the reference lab in Damascus. The vaccination campaign was implemented from 2 to 6 February.
- ❖ **Measles:** Samples have been collected from some cases with investigation forms completed. Vit. A and measles vaccines will be provided
- ❖ **MENINGITIS:** Meningitis cases detected are not clustered. Cases were managed properly; and investigation forms were filled for some cases but not all; it shows that most of the cases are viral meningitis not bacterial. Preventive therapy was provided as necessary for contacts of the probable bacterial meningitis cases.
- ❖ **SARI:** Epidemiological investigation has been conducted and nasopharyngeal swabs have been collected from patient in ICUs. Samples have been sent to the reference lab and then to the lab in Cairo for confirming the diagnosis and doing geno sequencing for the virus detected.
- ❖ **BD:** cases are not clustered. All cases were managed properly.
- ❖ Other response measures were also taken with regard to case management of Leishmaniasis, Hepatitis, TB and BRU cases. In addition to ensuring the availability of medicines and the implementation of sanitation measures in accordance with available capacity.

Table-1: Distribution of cases per age group, and by Governorate-week-8, 2014

Code	Age group	Sweida	Hamah	Daraa	Aleppo	Damascus	DierEzor	Idleb	Homs	Lattakia	Rural Damascus	Tartous	Raqua	Hassaka	Grand Total	
AD	< 5	54	96	95	304	229	267	72	48	56	82	58	94	24	1479	2733
	≥ 5	41	51	36	291	204	267	43	65	58	63	76	36	23	1254	
BD	< 5	2	0	7	0	1	14	0	0	0	0	0	0	2	26	45
	≥ 5	3	0	0	0	3	1	0	0	0	0	0	0	12	19	
AWD	< 5	0	0	0	0	0	0	0	0	0	0	0	0	1	1	4
	≥ 5	0	0	0	0	3	0	0	0	0	0	0	0	0	3	
AJS	< 5	4	14	23	34	16	17	17	18	28	4	0	10	3	188	433
	≥ 5	10	24	20	27	58	21	28	30	5	12	1	3	6	245	
ILI	< 5	190	169	180	415	489	209	110	63	464	156	126	40	100	2711	5747
	≥ 5	219	321	184	442	695	185	121	75	417	137	126	20	94	3036	
AFP	< 5	0	0	0	0	0	0	0	0	0	0	0	0	0	0	2
	≥ 5	0	1	0	0	1	0	0	0	0	0	0	0	0	2	
SM	< 5	0	5	0	1	3	29	1	2	1	0	0	21	0	63	110
	≥ 5	0	1	0	1	0	33	3	1	1	0	0	5	2	47	
SMN	< 5	0	6	0	0	2	1	1	0	0	0	0	3	0	13	22
	≥ 5	1	1	1	0	3	2	0	0	0	0	0	1	0	9	
SARI	< 5	7	26	0	0	40	5	11	0	2	0	0	0	0	91	221
	≥ 5	4	68	0	0	50	5	0	0	3	0	0	0	0	130	
ODs	< 5	2	29	6	61	28	36	13	39	4	78	0	5	0	301	1095
	≥ 5	12	113	28	144	98	136	5	93	13	135	3	9	5	794	
Total < 5		259	345	311	815	808	578	225	170	555	320	184	173	130	4873	10412
Total ≥ 5		290	580	269	905	1115	650	200	264	497	347	206	74	142	5539	
Total		549	925	580	1720	1923	1228	425	434	1052	667	390	247	272	10412	