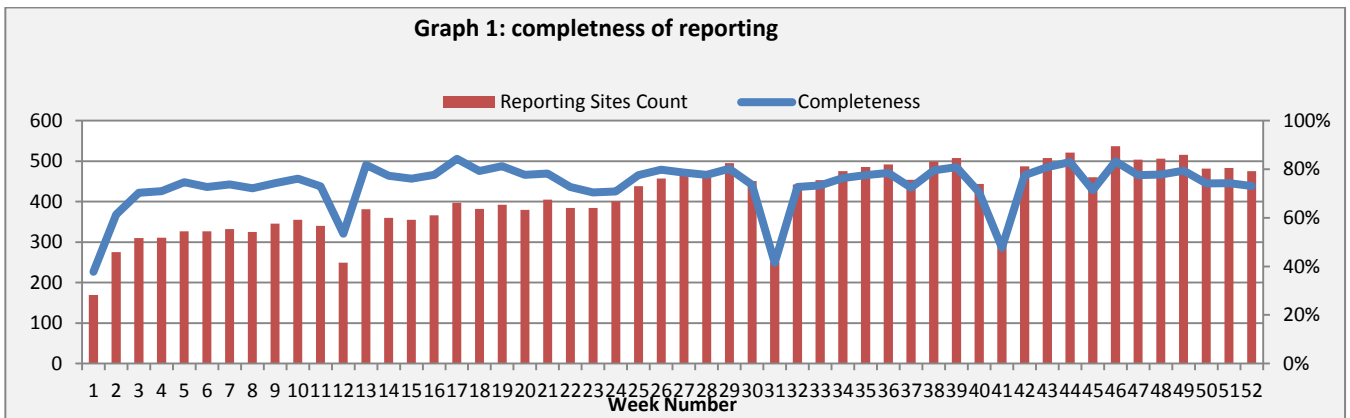


Highlights:

- ❖ 4 AWD cases were detected in Homs.
- ❖ 3 AFP cases were detected in Damascus and Lattakia.
- ❖ A high number of SARI cases were reported also this week.

❖ Completeness & Timeliness of Reporting

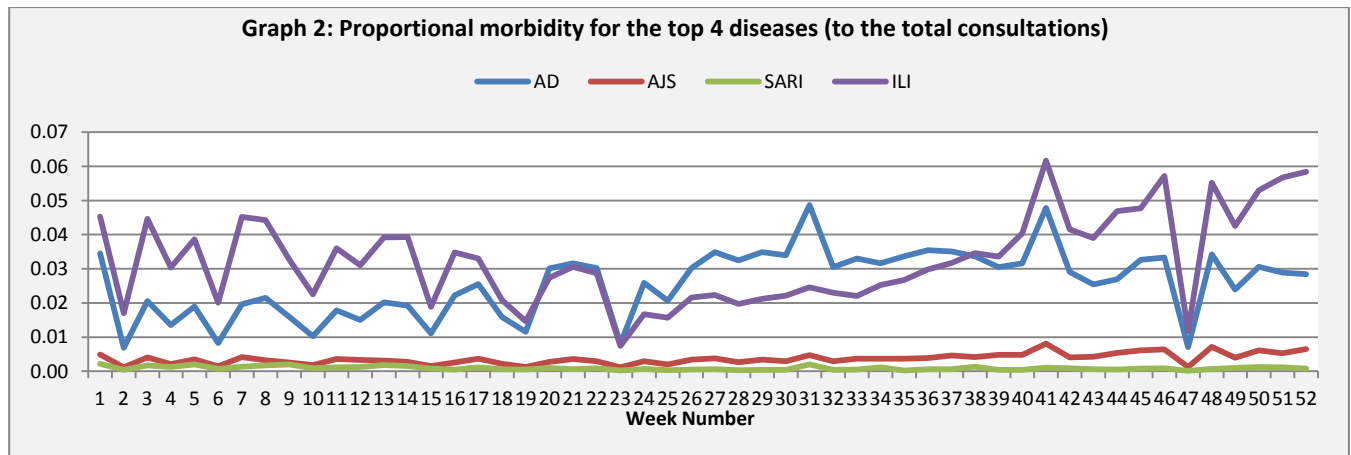
- ❖ The overall completeness of reporting was 73%; (475 out of total 650 EWARS sentinel sites). (See Graph 1). 14 governorates have reported this week.



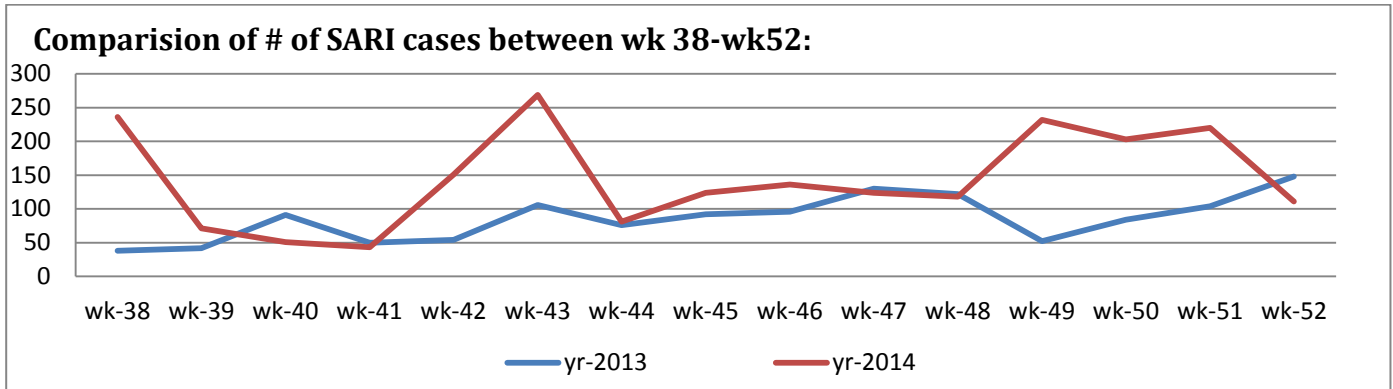
- ❖ Timeliness of reporting is 100%.

❖ The Morbidity Cases

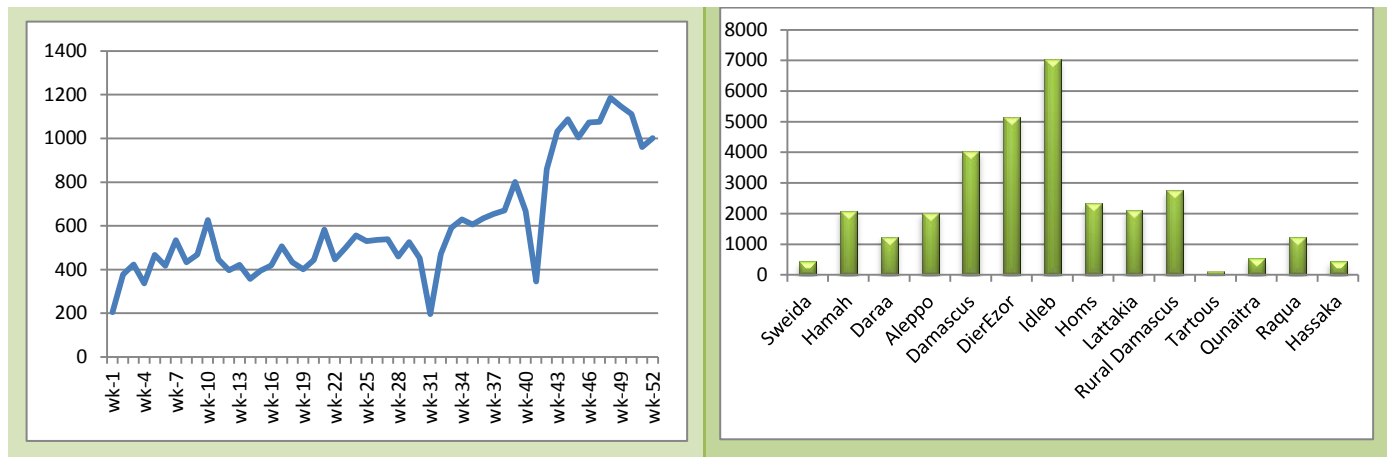
Out of the 133,624 total consultations, a total of 16,655 cases were reported; of which 8,716 cases were Influenza like Illness (52%), 4,177 cases were Acute Diarrhoea (25%), 1,001 cases of AJS, 111 cases of Sever Acute Respiratory Infection, 86 cases of Bloody Diarrhoea, 23 cases of Suspected Measles, 8 cases of Meningitis, 4 cases of AWD and 3 AFP cases. (Graph 2 shows the proportional morbidity for the top 4 diseases (to the total consultations, after excluding the data of 67 health facilities that did not report total consultations).



- ❖ Below chart reflects the trend in the number of SARI cases in 2013 and 2014 in the period between week 38 and 52, noting that the number of sentinel sites at the two reporting periods is different (65 hospitals were reporting to EWARS in 2013 while the number became 102 in 2014).

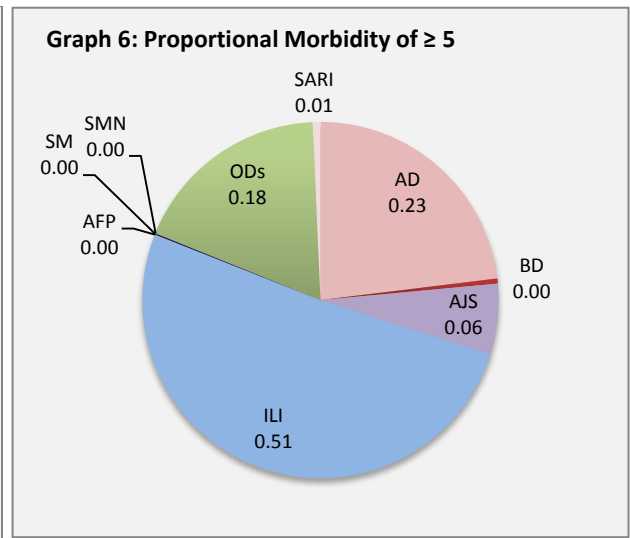
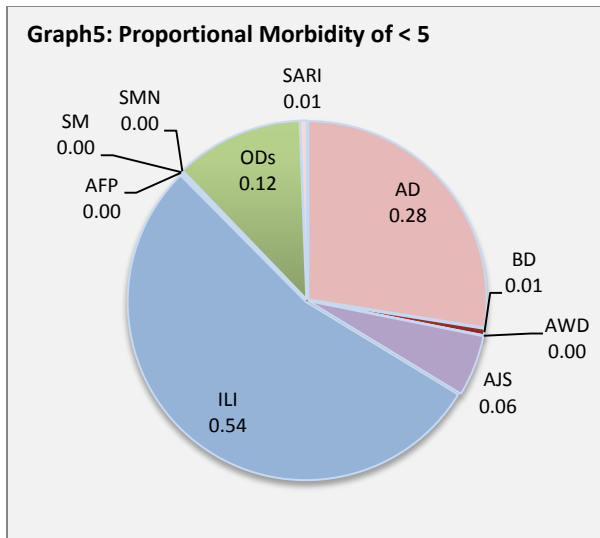


- ❖ Graph 4 displays the trend of the (31,440) AJS cases between wk1-w52/2014. The distribution of the cases per governorates shows that Idleb, DierEzor, and Damascus have the highest number of cases.



- ❖ In total, 2,526 cases were reported as “other diseases”. The most important diseases reported within this group were: 323 cases of Leishmaniasis (most of which were reported from Aleppo 26% and Idleb22%), 109 cases of Typhoid (most of which were reported from DierEzor 62%, and Rural Damascus 25%), 40 cases of Brucellosis (most of which were reported from DierEzor 50%), 12 case of TB, and 1 case of Pertussis.

- ❖ 55%of the cases were distributed among ≥ 5 age group.
- ❖ ILI consists (54%) of the cases among <5 and (51%) among ≥ 5 , while AD cases consists (28%) among <5 and (23%) among ≥ 5 .
- ❖ Graphs 5 and 6 below show the proportional morbidity among < 5 and ≥ 5 year age groups respectively.



❖ 51% of the cases were distributed among males.

❖ The Response

AWD: The four cases detected in Homs revealed to be acute diarrhoea and recovered quickly. No samples were collected

AFP: Stool samples was collected from the AFP case and sent to the reference lab in Damascus. The last round of vaccination campaign was implemented between 30th November and 4th December.

AJS: The RRT in all governorates conducted field visits to the IDPs shelters and schools to evaluate the health and environmental situation, and raise the awareness about food and water born diseases.

SARI: Nasopharyngeal swabs were collected only from the cases that were admitted to intensive care unit as the national protocol recommends. The RRTs in all governorates conducted awareness campaign about respiratory infections in the IDPs shelters and schools.

Table-1: Distribution of cases per age group, and by Governorate-week-52, 2014:

Code	Age group	Sweida	Hamah	Daraa	Aleppo	Damascus	DierEzor	Homs	Lattakia	Rural Damascus	Tartous	Qunaitra	Raqua	Hassaka	Idleb	Grand Total	
AD	< 5	83	0	49	100	234	607	86	119	234	18	44	97	156	249	2076	4177
	≥ 5	114	0	22	103	291	626	90	101	246	28	56	30	123	271	2101	
BD	< 5	4	0	2	0	1	19	0	1	0	0	1	0	16	0	44	86
	≥ 5	1	0	1	0	4	4	0	2	2	0	6	0	22	0	42	
AWD	< 5	0	0	0	0	0	0	4	0	0	0	0	0	0	0	4	4
	≥ 5	0	0	0	0	0	0	0	0	0	0	0	0	0	0	0	
AJS	< 5	1	0	3	13	34	129	35	14	31	0	5	24	3	126	418	1001
	≥ 5	2	0	5	26	70	154	50	38	54	1	4	12	14	153	583	
ILI	< 5	274	0	25	646	517	988	47	358	467	262	15	2	59	404	4064	8716
	≥ 5	344	0	25	523	607	999	50	275	543	432	41	14	73	726	4652	
AFP	< 5	0	0	0	0	1	0	0	0	0	0	0	0	0	0	1	3
	≥ 5	0	0	0	0	1	0	0	1	0	0	0	0	0	0	2	
SM	< 5	0	0	0	0	0	0	1	1	0	0	0	2	1	7	12	23
	≥ 5	0	0	0	0	1	0	0	0	0	0	0	0	0	10	11	
SMN	< 5	0	0	0	0	2	0	0	0	0	0	0	3	0	0	5	8
	≥ 5	0	0	0	0	3	0	0	0	0	0	0	0	0	0	3	
SARI	< 5	7	0	0	0	25	5	0	1	0	0	0	0	5	3	46	111
	≥ 5	7	0	0	0	48	1	0	0	0	0	0	0	7	2	65	
Others	< 5	2	0	13	279	75	70	17	42	245	10	63	4	0	54	874	2526
	≥ 5	14	0	32	375	144	208	51	84	568	35	69	4	0	68	1652	
Total < 5		371	0	92	1038	889	1818	190	536	977	290	128	132	240	843	7544	16655
Total ≥ 5		482	0	85	1027	1169	1992	241	501	1413	496	176	60	239	1230	9111	
Total		853	0	177	2065	2058	3810	431	1037	2390	786	304	192	479	2073	16655	