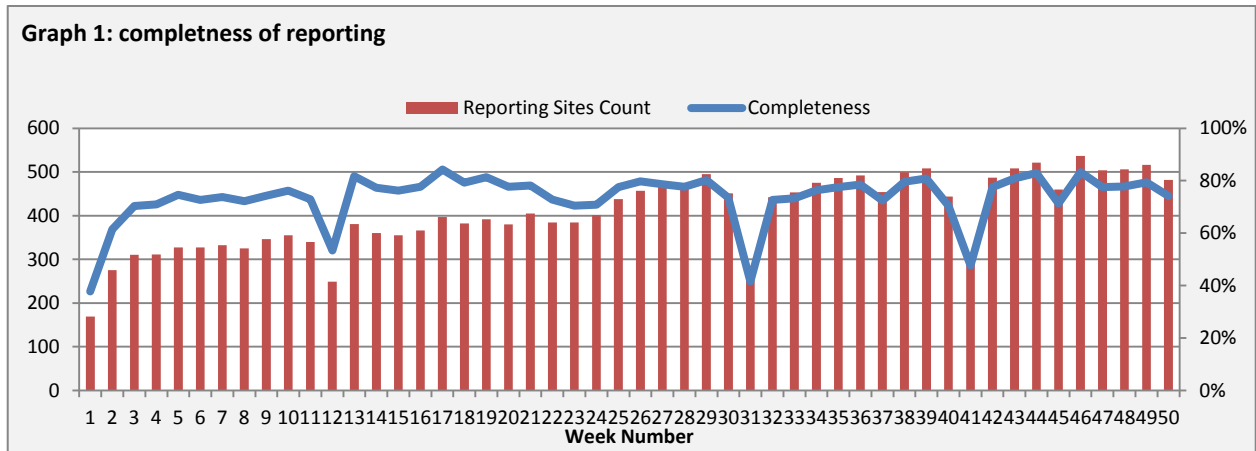


Highlights:

- ❖ A high number of SARI cases were reported also this week.
- ❖ A slight decrease in AJS cases were also reported for this week

❖ Completeness & Timeliness of Reporting

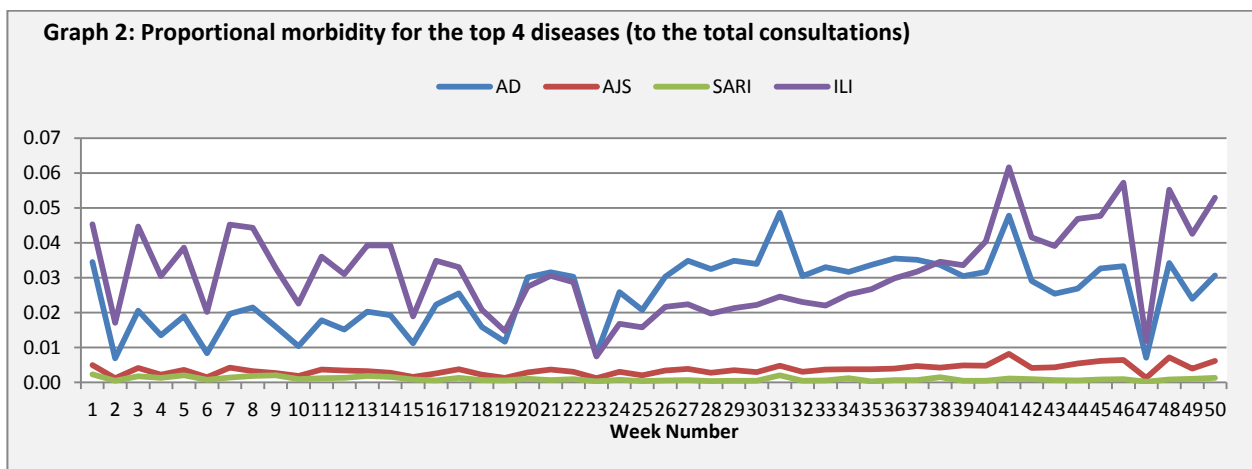
- ❖ The overall completeness of reporting was 74%; (482 out of total 650 EWARS sentinel sites). (See Graph 1). 14 governorates have reported this week.



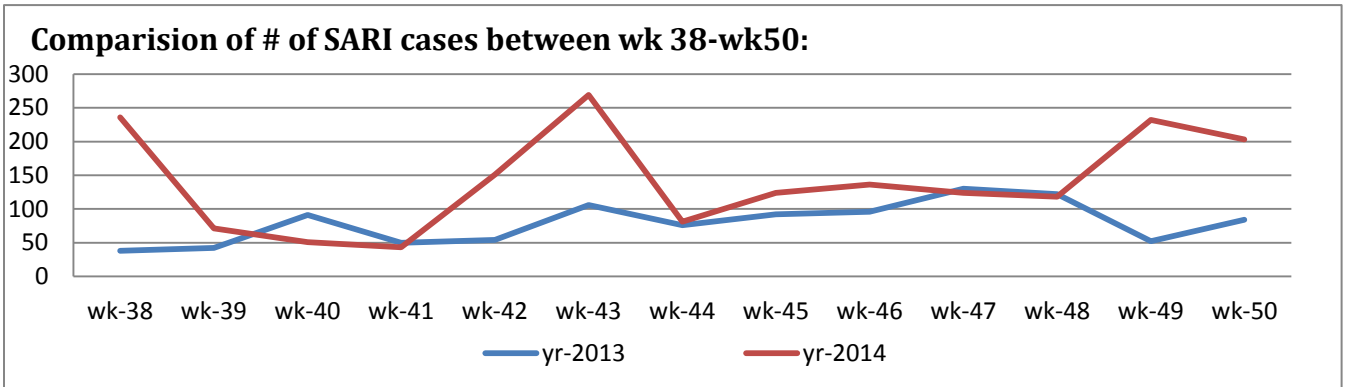
- ❖ Timeliness of reporting is 65%.

❖ The Morbidity Cases

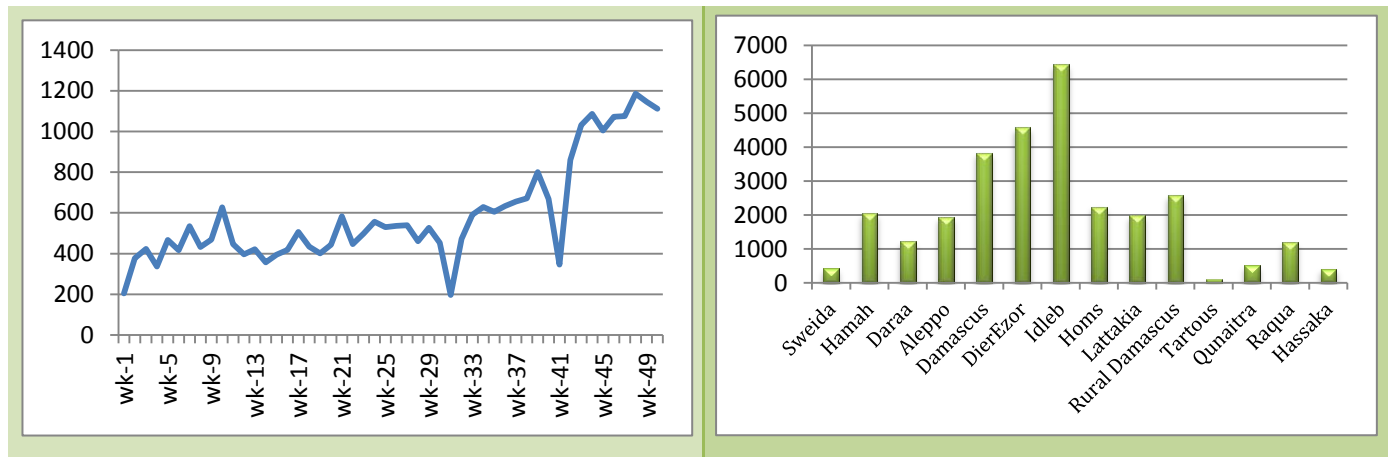
Out of the 162,929 total consultations, a total of 19,733 cases were reported; of which 9,780 cases were Influenza like Illness (50%), 5,380 cases were Acute Diarrhoea (27%), 1,111 cases of AJS, 203 cases of Sever Acute Respiratory Infection, 93 cases of Bloody Diarrhoea, 36 cases of Suspected Measles, and 16 cases of Meningitis. (Graph 2 shows the proportional morbidity for the top 4 diseases (to the total consultations, after excluding the data of 46 health facilities that did not report total consultations).



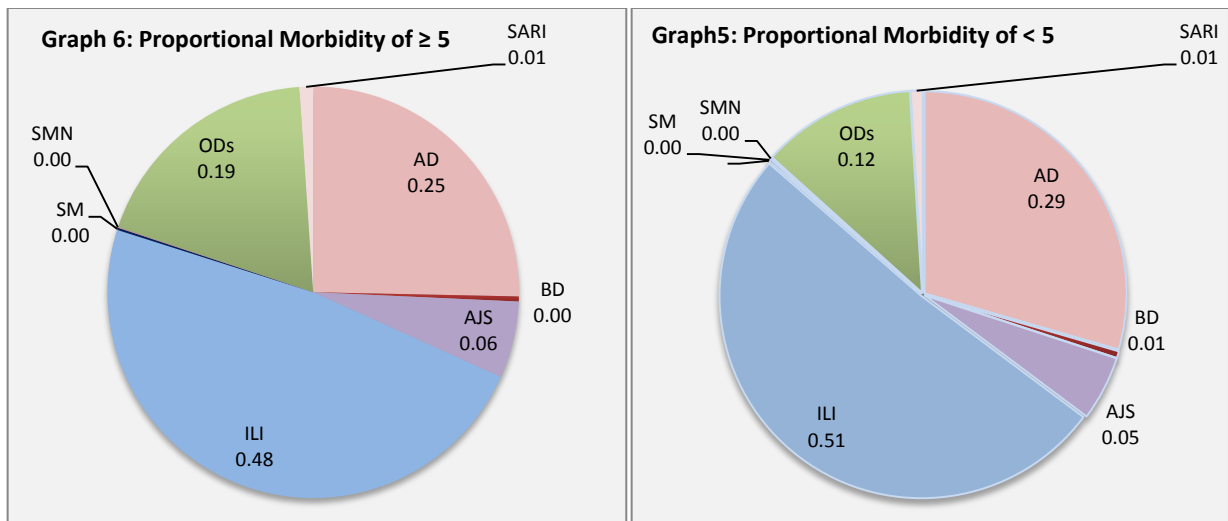
- ❖ Below chart reflects the trend in the number of SARI cases in 2013 and 2014 in the period between week 38 and 50, noting that the number of sentinel sites at the two reporting periods is different (65 hospitals were reporting to EWARS in 2013 while the number became 102 in 2014).



- ❖ Graph 4 displays the trend of the (29,478) AJS cases between wk1-w50/2014. A slight decrease in the number of reported cases were noted during this week. The distribution of the cases per governorates shows that Idleb, DierEzor, and Damascus have the highest number of cases.



- ❖ In total, 3,114 cases were reported as “other diseases”. The most important diseases reported within this group were: 508 cases of Leishmaniasis (most of which were reported from Idleb 46%), 133 cases of Typhoid (most of which were reported from DierEzor 56%, and Rural Damascus 16%), 55 cases of Brucellosis (most of which were reported from DierEzor 47%), 22 case of TB, and 6 cases of Pertussis.
- ❖ 53% of the cases were distributed among ≥ 5 age group.
- ❖ ILI consists (51%) of the cases among <5 and (48%) among ≥ 5 , while AD cases consists (29%) among <5 and (25%) among ≥ 5 .
- ❖ Graphs 5 and 6 below show the proportional morbidity among < 5 and ≥ 5 year age groups respectively.



- ❖ 53% of the cases were distributed among males.

❖ The Response

- ❖ **AJS:** The RRT in Damascus and Rural Damascus conducted field visits to the areas where high number of cases were reported and they collected water samples for testing. Most of the people residing in these hot areas are drinking from water tanks that are not well controlled and results showed unacceptable level of chlorination. As a response, The Ministry of Water resources requested certification for all water tankers to ensure they are providing quality drinking water.
- ❖ **SARI:** Nasopharyngeal swabs were collected only from the cases that were admitted to intensive care unit under the national protocol recommends.
- ❖ **SM:** samples were collected from the suspected cases and sent to the reference lab in Damascus
- ❖ **SMN:** The 8 meningitis cases detected in Idleb revealed to be viral and all were properly managed and cured.

Table-1: Distribution of cases per age group, and by Governorate-week-50, 2014:

Code	Age group	Sweida	Hamah	Daraa	Aleppo	Damascus	DierEzor	Idleb	Homs	Lattakia	Rural Damascus	Tartous	Qunaitra	Raqa	Hassaka	Grand Total	
AD	< 5	96	65	46	105	280	786	448	100	131	285	44	32	137	158	2713	5380
	≥ 5	103	51	29	72	351	784	449	98	81	287	90	49	101	122	2667	
BD	< 5	1	0	3	0	6	15	0	3	4	1	1	4	2	11	51	93
	≥ 5	1	0	4	0	4	8	0	4	2	0	0	7	0	12	42	
AWD	< 5	0	0	0	0	0	0	0	0	0	0	0	0	0	0	0	0
	≥ 5	0	0	0	0	0	0	0	0	0	0	0	0	0	0	0	
AJS	< 5	2	17	9	16	23	86	160	73	19	45	1	5	14	6	476	1111
	≥ 5	5	33	4	13	70	120	175	80	44	67	1	5	11	7	635	
ILI	< 5	403	206	38	537	505	1058	615	92	333	559	281	14	31	37	4709	9780
	≥ 5	641	273	25	380	618	969	620	214	249	605	401	37	8	31	5071	
AFP	< 5	0	0	0	0	0	0	0	0	0	0	0	0	0	0	0	0
	≥ 5	0	0	0	0	0	0	0	0	0	0	0	0	0	0	0	
SM	< 5	0	0	0	0	0	3	12	0	1	1	0	0	0	0	17	36
	≥ 5	3	1	0	0	0	0	10	0	4	0	0	0	1	0	19	
SMN	< 5	1	2	0	0	1	1	4	0	0	0	0	0	0	1	10	16
	≥ 5	0	0	0	0	1	0	4	0	1	0	0	0	0	0	6	
SARI	< 5	11	13	0	3	31	3	9	0	0	0	0	0	0	19	89	203
	≥ 5	11	12	0	1	44	3	6	0	1	0	0	0	0	36	114	
Others	< 5	4	60	22	43	57	36	143	427	14	278	0	45	7	0	1136	3114
	≥ 5	10	134	30	104	182	199	202	537	31	458	7	77	7	0	1978	
Total < 5		518	363	118	704	903	1988	1391	695	502	1169	327	100	191	232	9201	19733
Total ≥ 5		774	504	92	570	1270	2083	1466	933	413	1417	499	175	128	208	10532	
Total		1292	867	210	1274	2173	4071	2857	1628	915	2586	826	275	319	440	19733	