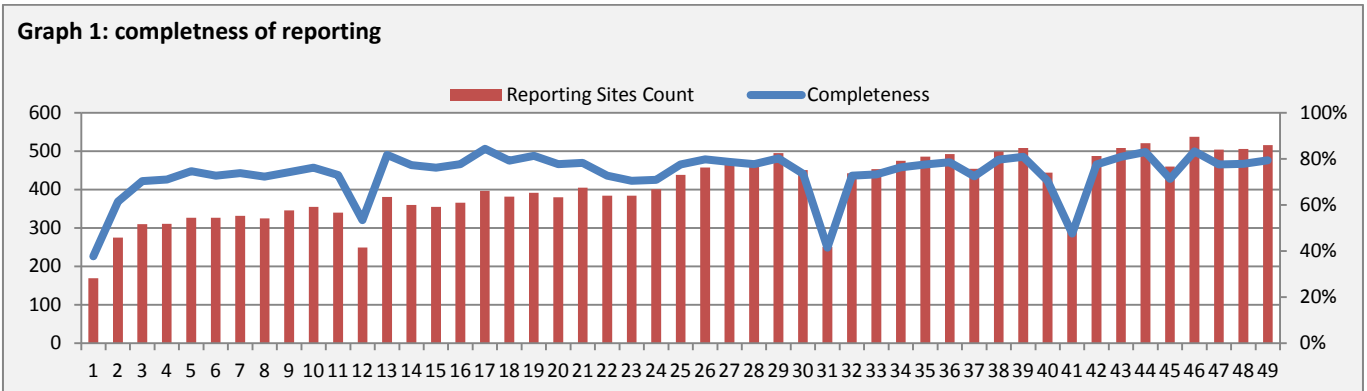


Highlights:

- ❖ 1 AWD case was detected in Homs.
- ❖ A notable increase in SARI cases was reported in Hamah.

❖ Completeness & Timeliness of Reporting

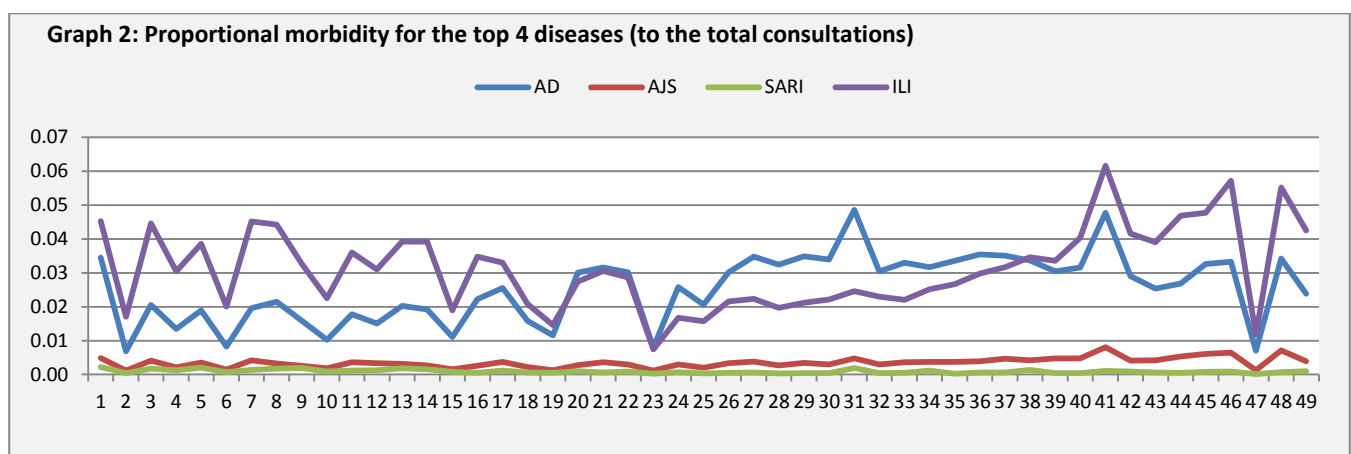
- ❖ The overall completeness of reporting was 79%; (516 out of total 650 EWARS sentinel sites). (See Graph 1). 14 governorates have reported this week.



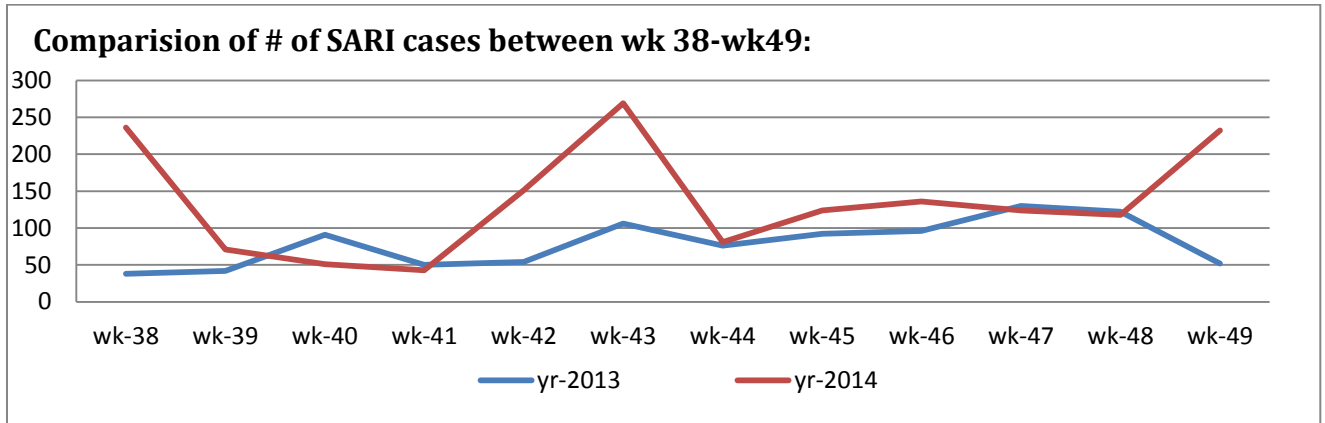
- ❖ Timeliness of reporting is 89%.

❖ The Morbidity Cases

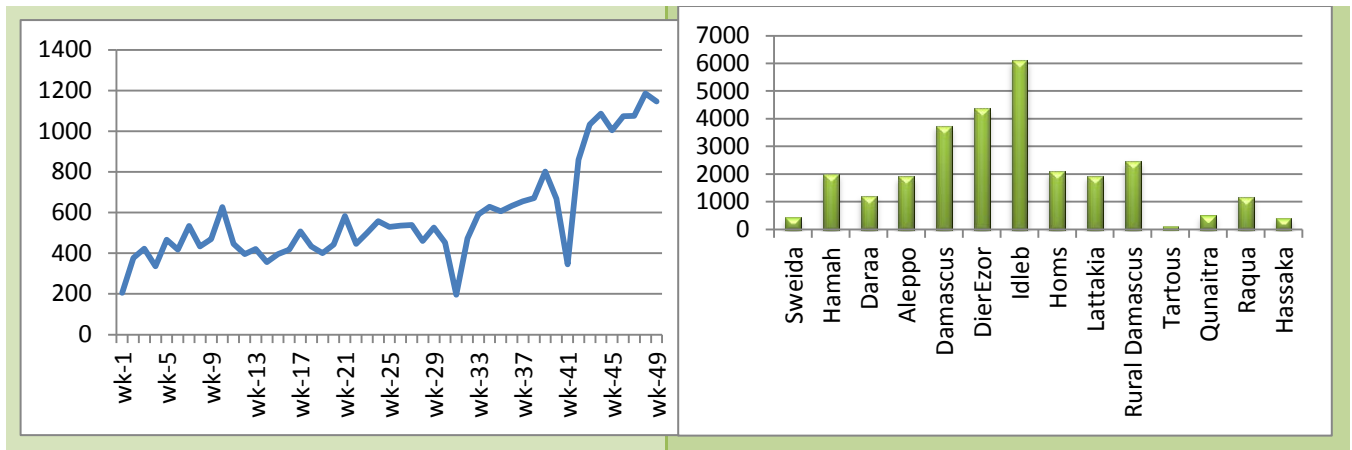
Out of the 238,894 total consultations, a total of 21,303 cases were reported; of which 10,970 cases were Influenza like Illness (51%), 6,035 cases were Acute Diarrhoea (28%), 1,146 cases of AJS, 232 cases of Sever Acute Respiratory Infection, 86 cases of Bloody Diarrhoea, 34 cases of Suspected Measles, 23 cases of Meningitis, and 1 case of AWD . (Graph 2 shows the proportional morbidity for the top 4 diseases (to the total consultations, after excluding the data of 78 health facilities that did not report total consultations).



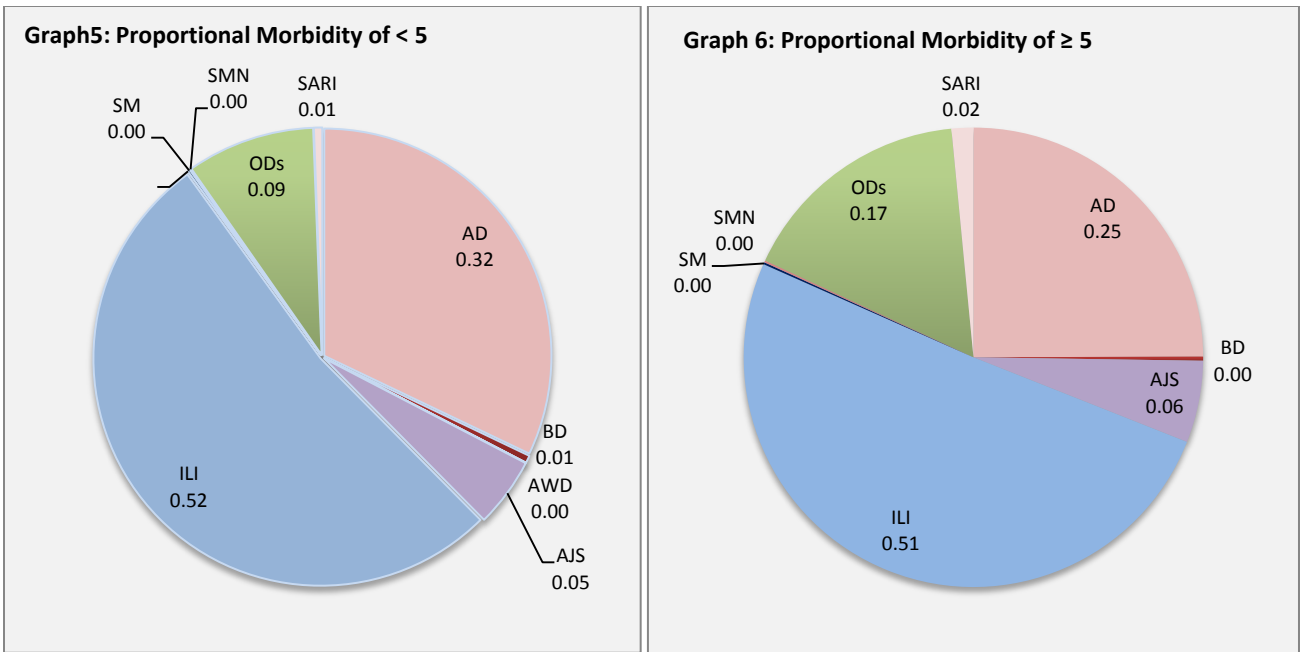
- ❖ Below chart reflects the trend in the number of SARI cases in 2013 and 2014 in the period between week 38 and 49, noting that the number of sentinel sites at the two reporting periods is different (65 hospitals were reporting to EWARS in 2013 while the number became 102 in 2014)



- ❖ Graph 4 displays the trend of the (28,367) AJS cases between wk1-w49/2014 with a remarkable increase during the previous three weeks. The distribution of the cases per governorates shows that Idleb, DierEzor, and Homs have the highest number of cases.



- ❖ In total, 2,776 cases were reported as “other diseases”. The most important diseases reported within this group were: 532 cases of Leishmaniasis (most of which were reported from Rural Damascus 32% and Idleb 27%), 126 cases of Typhoid (most of which were reported from DierEzor 55%, and Rural Damascus 18%), 42 cases of Brucellosis (most of which were reported from DierEzor 33% and Rural Damascus 31%), 17 case of TB, and 7 cases of Pertussis.
- ❖ 53% of the cases were distributed among ≥ 5 age group.
- ❖ ILL consists (52%) of the cases among <5 and (51%) among ≥ 5 , while AD cases consists (32%) among <5 and (25%) among ≥ 5 .
- ❖ Graphs 5 and 6 below show the proportional morbidity among < 5 and ≥ 5 year age groups respectively.



- ❖ 51% of the cases were distributed among males.

❖ The Response

- ❖ **AWD:** the case managed properly, no samples were collected.
- ❖ **AJS and other water borne diseases:** The mass hygiene promotion campaign took place with a set of raising awareness activities in collaboration with the ministry of information. In addition, MOH has circulated official requests to the directorates of school health and directorates of health in all governorates to monitor the environmental and health conditions in the schools and in IDPs shelters.
- ❖ **SARI:** No samples were collected from the mentioned cases because the national protocol recommends collecting samples only for the cases admitted to intensive care unit.

Table-1: Distribution of cases per age group, and by Governorate-week-49, 2014:

Code	Age group	Sweida	Daraa	Aleppo	Damascus	DierEzor	Homs	Lattakia	Rural Damascus	Tartous	Qunaitra	Raqua	Hassaka	Idleb	Hamah	Grand Total	
AD	< 5	88	131	124	378	857	78	165	328	48	72	256	31	556	124	3236	6035
	≥ 5	94	83	103	356	852	80	83	312	55	79	133	7	484	78	2799	
BD	< 5	2	2	0	8	19	0	6	11	0	2	4	0	0	0	54	86
	≥ 5	3	3	0	6	5	0	8	1	0	4	1	1	0	0	32	
AWD	< 5	0	0	0	0	0	1	0	0	0	0	0	0	0	0	1	1
	≥ 5	0	0	0	0	0	0	0	0	0	0	0	0	0	0	0	
AJS	< 5	4	3	17	19	104	29	23	40	0	7	28	0	208	17	499	1146
	≥ 5	1	7	27	73	103	46	39	111	1	20	13	2	165	39	647	
ILI	< 5	476	161	493	576	945	77	465	500	420	287	3	0	704	183	5290	10970
	≥ 5	578	216	404	639	904	85	281	567	683	433	0	0	714	176	5680	
AFP	< 5	0	0	0	0	0	0	0	0	0	0	0	0	0	0	0	0
	≥ 5	0	0	0	0	0	0	0	0	0	0	0	0	0	0	0	
SM	< 5	0	0	0	3	0	0	1	4	0	0	1	0	9	0	18	34
	≥ 5	0	0	0	0	0	0	1	2	0	0	0	0	12	1	16	
SMN	< 5	1	0	2	0	0	0	0	0	0	0	0	0	3	2	8	23
	≥ 5	0	0	0	9	0	0	1	0	0	0	0	0	4	1	15	
SARI	< 5	4	0	0	18	5	0	2	0	0	0	0	0	6	25	60	232
	≥ 5	16	0	0	45	1	2	0	0	0	0	0	0	5	103	172	
Others	< 5	3	32	242	61	26	14	20	291	3	56	8	0	115	49	920	2776
	≥ 5	9	94	392	153	131	64	88	531	8	87	12	1	165	121	1856	
Total < 5		578	329	878	1063	1956	199	682	1174	471	424	300	31	1601	400	10086	21303
Total ≥ 5		701	403	926	1281	1996	277	501	1524	747	623	159	11	1549	519	11217	