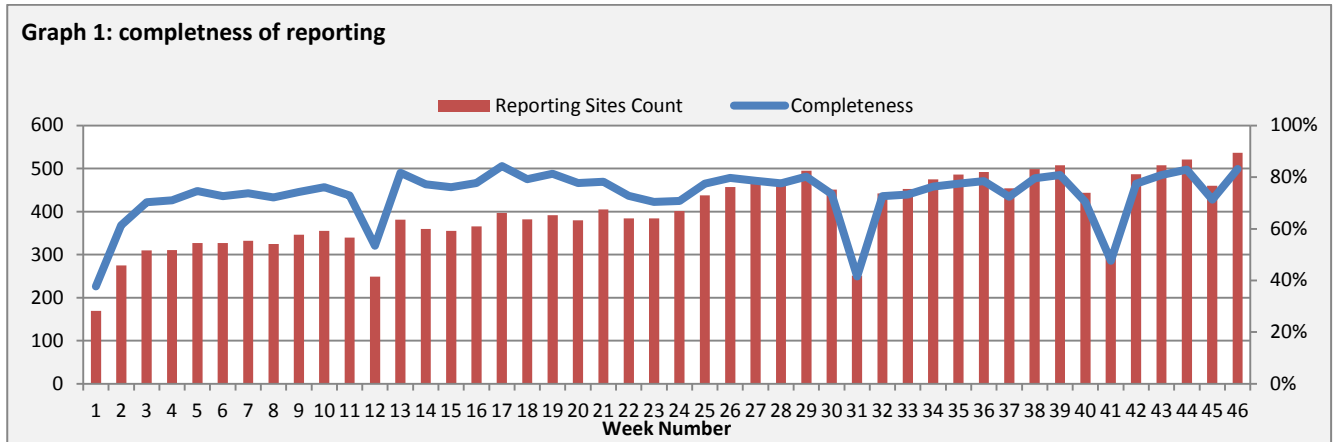


Highlights:

- ❖ 2 AWD cases were detected Homs.
- ❖ 1 AFP case was detected in Damascus.

❖ Completeness & Timeliness of Reporting

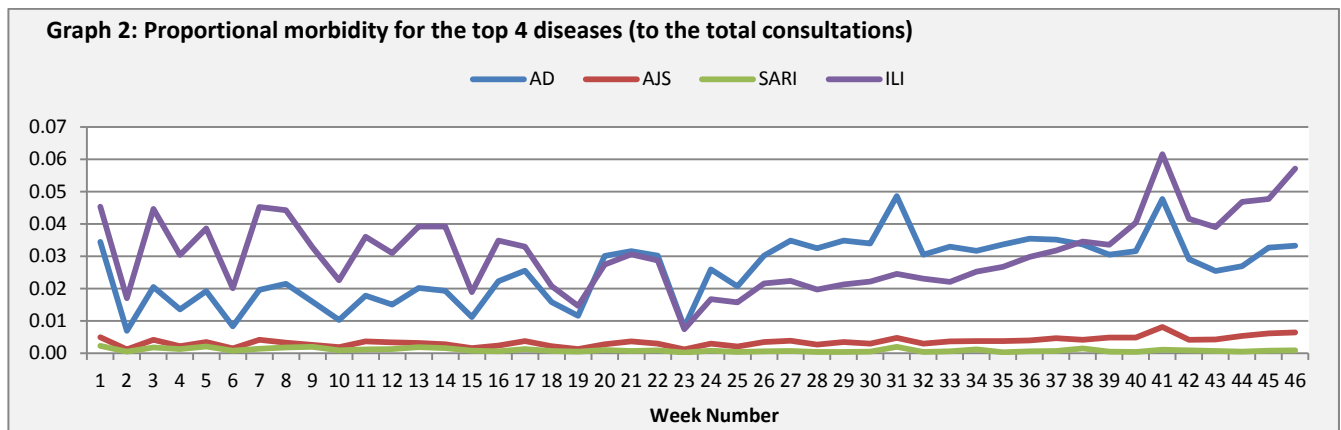
- ❖ The overall completeness of reporting was 83%; (537 out of total 645 EWARS sentinel sites). (See Graph 1). 14 governorates have reported this week.



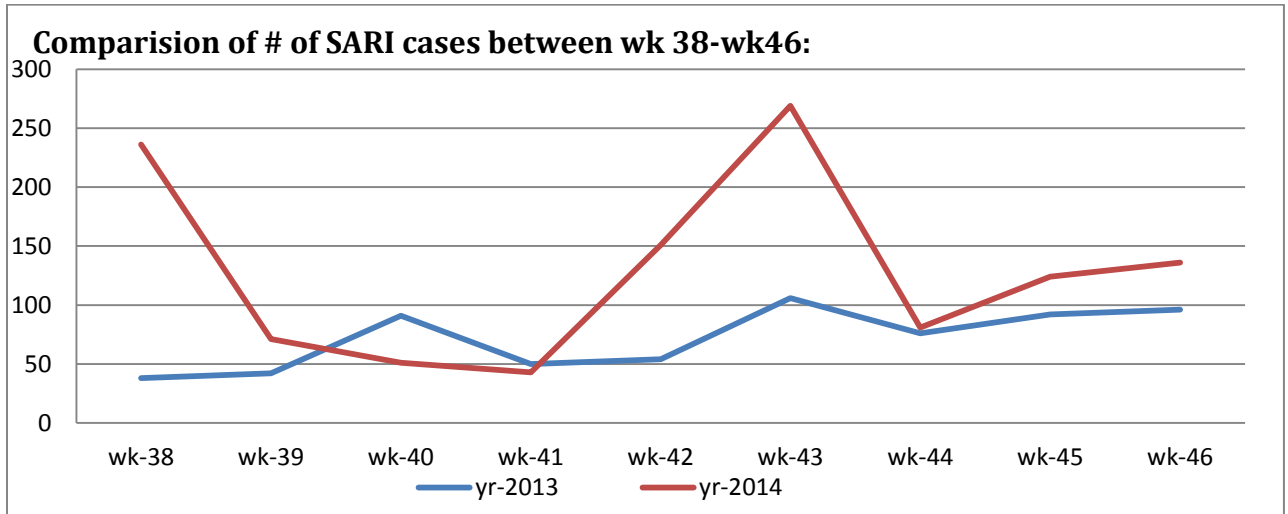
- ❖ Timeliness of reporting is 97%.

❖ The Morbidity Cases

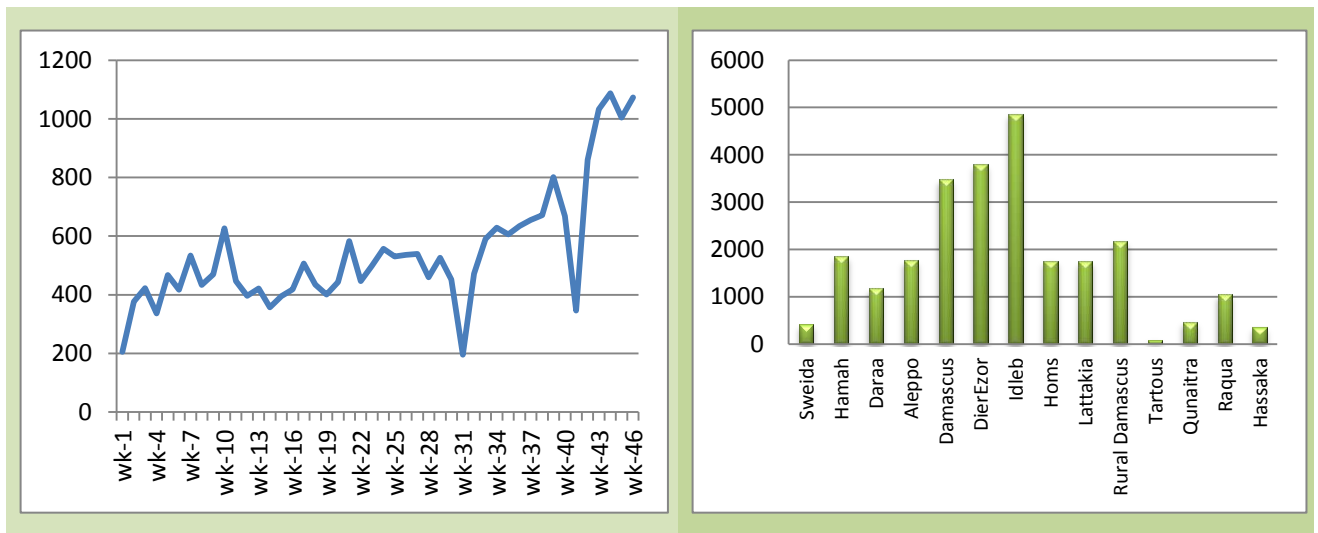
Out of the 152,961 total consultations, a total of 20,212 cases were reported; of which 9,847 cases were Influenza like Illness (49%), 5,468 cases were Acute Diarrhoea (27%), 1,073 cases of AJS, 136 cases of Sever Acute Respiratory Infection, 128 cases of Bloody Diarrhoea, 23 cases of Meningitis, 13 cases of Suspected Measles, 2 cases of AWD, and 1 case of AFP. (Graph 2 shows the proportional morbidity for the top 4 diseases (to the total consultations, after excluding the data of 89 health facilities that did not report total consultations).



- ❖ Below chart reflects the trend in the number of SARI cases in 2013 and 2014 in the period between week 38 and 46, noting that the number of sentinel sites at the two reporting periods were different (in 2013, the number of reporting hospitals was 65, while in 2014 was 102).

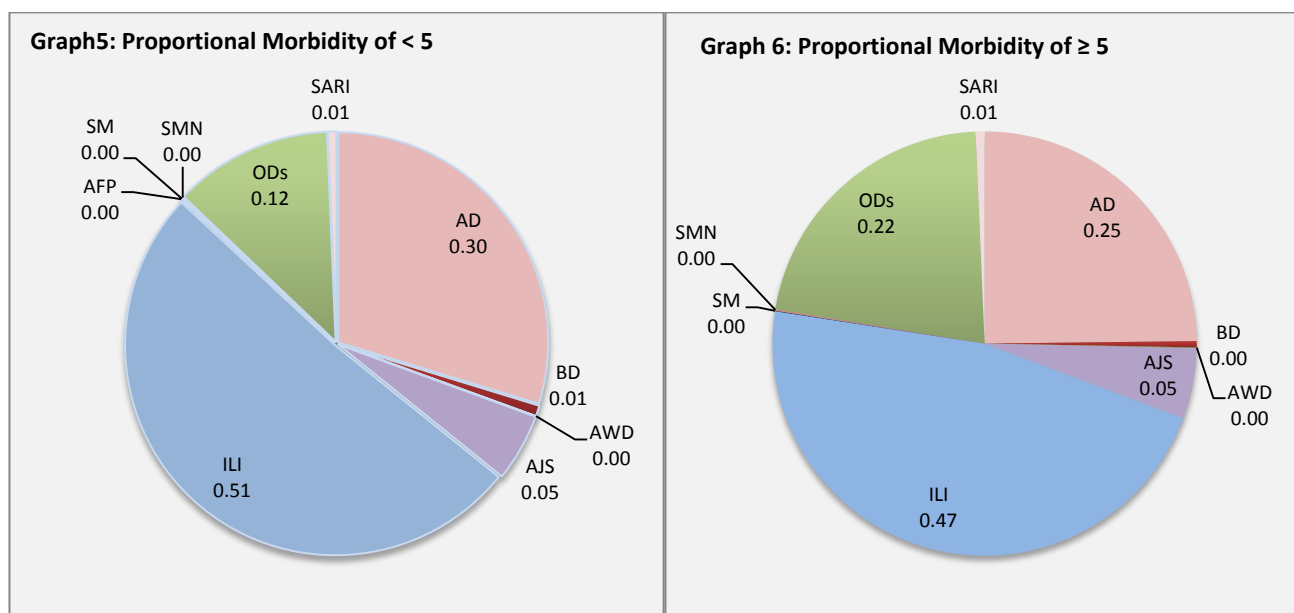


- ❖ Graph 4 displays the trend of the (24,959) AJS cases between wk1-w46/2014 with a remarkable increase during the previous three weeks. The distribution of the cases per governorates shows that Idleb, Dier Ezor , and Damascus have the highest number of cases.



- ❖ In total, 3,515 cases were reported as “other diseases”. The most important diseases reported within this group were: 492 cases of Leishmaniasis (most of which were reported from Idleb 34% and Rural Damascus 19%), 203 cases of Typhoid (most of which were reported from DierEzor 40% and Idleb 28%), 54 cases of Brucellosis (most of which were reported from DierEzor 52%), 14 case of TB, and 11 cases of Pertussis.
- ❖ 55%of the cases were distributed among ≥ 5 age group.
- ❖ ILI consists (51%) of the cases among <5 and (47%) among ≥ 5 , while AD cases consists (30%) among <5 and (25%) among ≥ 5 .

- ❖ Graphs 5 and 6 below show the proportional morbidity among < 5 and ≥ 5 year age groups respectively.



- ❖ 51% of the cases were distributed among males.

❖ The Response

AFP: Stool samples were collected from the AFP case and sent to the reference lab in Damascus. The new round of vaccination campaign will be implemented between 30th November and 4th December.

AWD: NO samples were collected from the 2 cases detected in a remote district in Homs.

AJS: WHO in coordination with MOH are planning for a mass hygiene promotion campaign targeting households, schools, food suppliers in addition to the distribution of hygiene kits in the most affected governorates. The campaign will start first week of December till end of this year.

SARI: 300,000 influenza vaccines were distributed for high risk groups including Health care workers who are in direct contact with SARI patients in ICU and elderly particularly who have chronic diseases in the IDPs shelters at health facility level.

BD: cases are not clustered. All cases were managed properly.

Table-1: Distribution of cases per age group, and by Governorate-week-46, 2014:

Code	Age group	Sweida	Hamah	Daraa	Aleppo	Damascus	DierEzor	Idleb	Homs	Lattakia	Rural Damascus	Tartous	Qunaitra	Raqua	Hassaka	Grand Total
AD	< 5	109	82	75	120	319	666	534	66	152	236	48	50	137	143	2737
	≥ 5	131	70	54	106	294	748	531	44	106	296	110	76	84	81	2731
BD	< 5	1	0	1	0	5	27	0	1	8	4	1	6	2	20	76
	≥ 5	2	0	4	0	3	3	0	1	6	2	0	5	3	23	52
AWD	< 5	0	0	0	0	0	0	0	2	0	0	0	0	0	0	2
	≥ 5	0	0	0	0	0	0	0	0	0	0	0	0	0	0	0
AJS	< 5	1	19	8	43	13	117	203	16	17	23	0	4	10	6	480
	≥ 5	8	26	3	61	74	127	182	19	23	36	2	7	7	18	593
ILI	< 5	307	129	106	624	507	774	630	0	445	447	397	170	41	129	4706
	≥ 5	356	223	128	421	611	735	677	0	271	606	627	357	23	106	5141
AFP	< 5	0	0	0	0	1	0	0	0	0	0	0	0	0	0	1
	≥ 5	0	0	0	0	0	0	0	0	0	0	0	0	0	0	0
SM	< 5	0	0	0	0	1	2	3	0	1	1	0	0	0	0	8
	≥ 5	0	0	0	0	1	1	2	0	0	1	0	0	0	0	5
SMN	< 5	1	3	0	2	1	0	0	0	0	1	0	0	3	0	11
	≥ 5	1	2	0	0	5	0	1	0	0	2	0	0	1	0	12
SARI	< 5	5	4	0	0	18	4	7	0	1	0	0	0	0	22	61
	≥ 5	11	4	0	0	35	0	7	0	1	0	0	0	0	17	75
Others	< 5	1	31	24	372	83	36	114	1	41	317	15	49	2	38	1124
	≥ 5	7	78	90	606	218	145	216	10	49	789	29	98	6	50	2391
Total < 5		425	268	214	1161	948	1626	1491	86	665	1029	461	279	195	358	9206
Total ≥ 5		516	403	279	1194	1241	1759	1616	74	456	1732	768	543	124	295	11000
Total		941	671	493	2355	2189	3385	3107	160	1121	2761	1229	822	319	653	20206