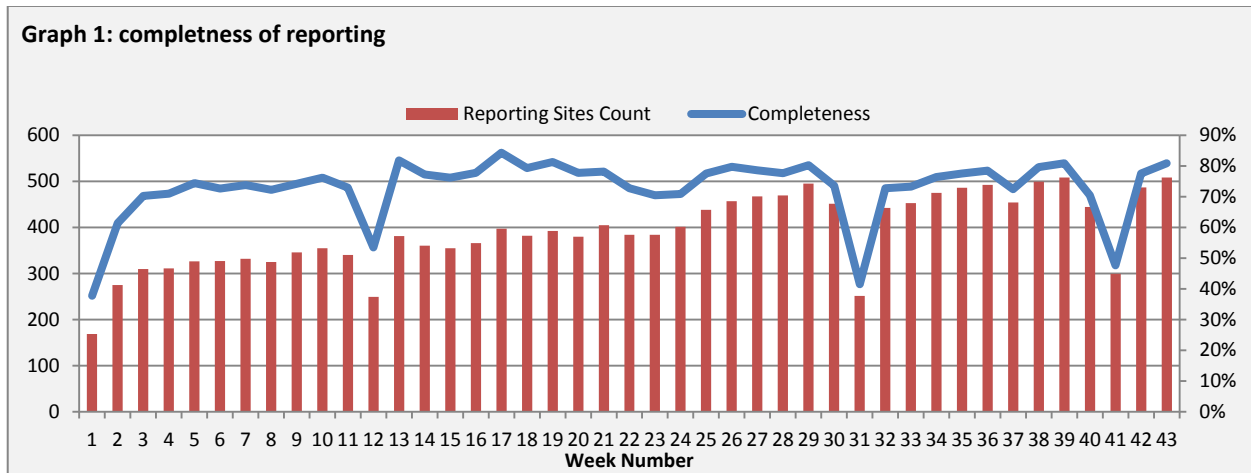


Highlights:

- ❖ 10 AFP cases were detected in Damascus (3), Homs (2), DierEzor (2), Idleb (1), Hamah (1), and Rural Damascus (1).

Completensess& Timeliness of Reporting

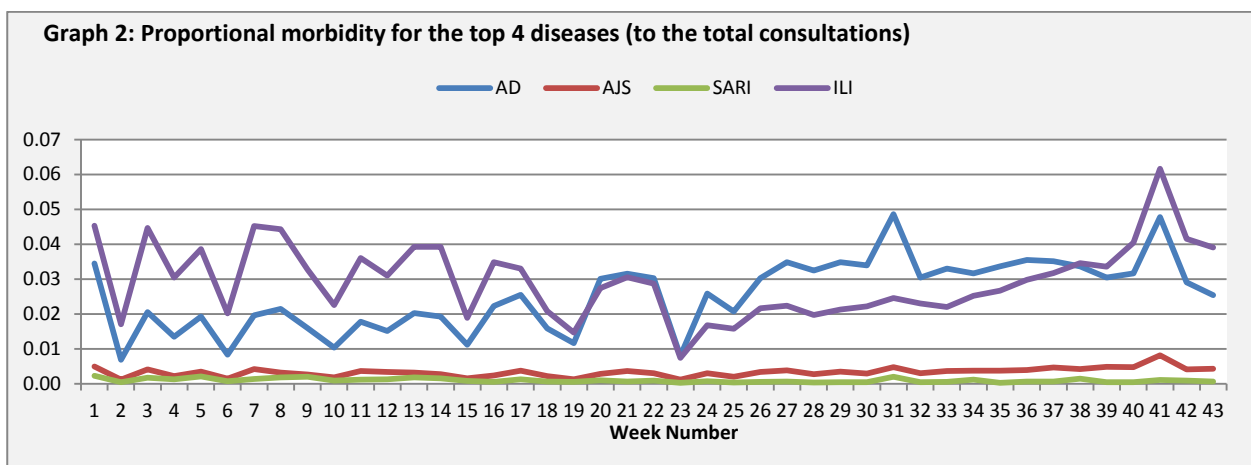
- ❖ The overall completeness of reporting was 81%; (508 out of total 628 EWARS sentinel sites). (See Graph 1). 14 governorates have reported this week.



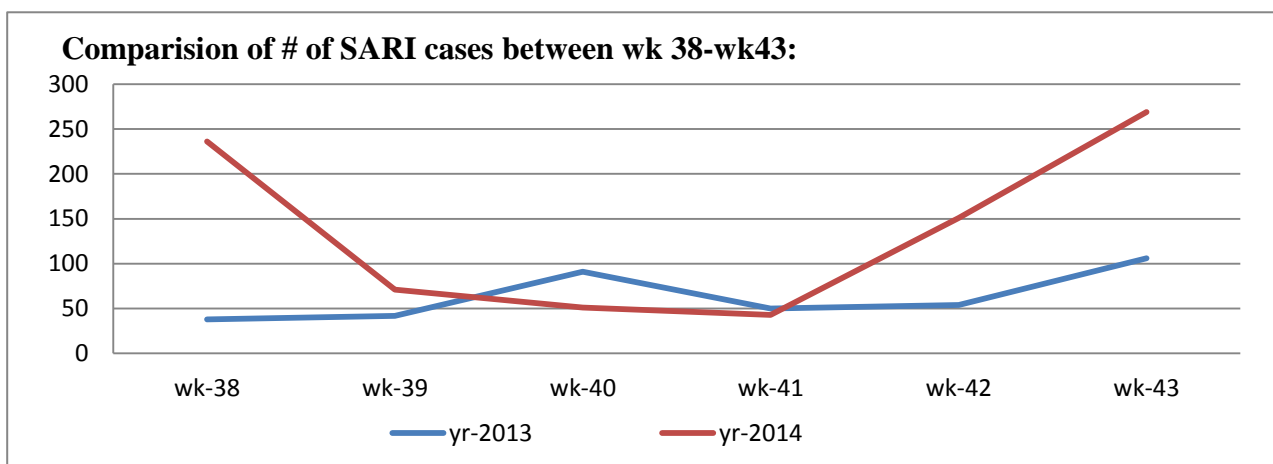
- ❖ Timeliness of reporting is 85%.

The Morbidity Cases

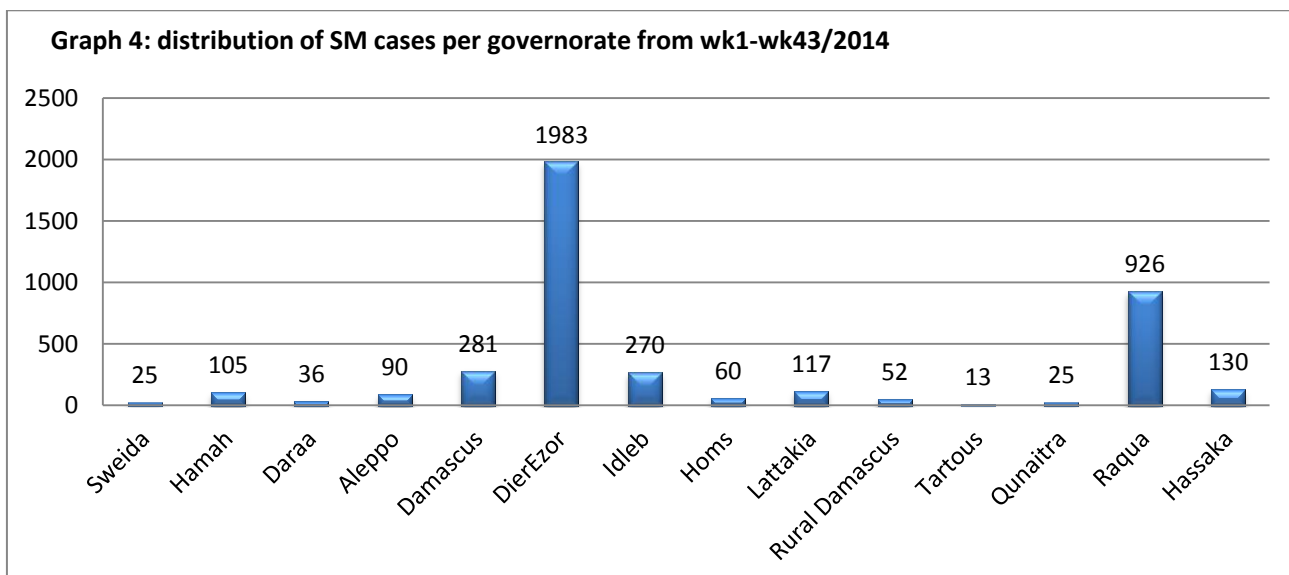
Out of the 213,644 total consultations, a total of 18,894 cases were reported; of which 9,049 cases were Influenza like Illness (48%), 5,875 cases were Acute Diarrhoea (31%), 1,032 cases of AJS, 269 cases of Sever Acute Respiratory Infection, 121 cases of Bloody Diarrhoea, 32 cases of Suspected Measles, 30 cases of Meningitis, and 10 cases of AFP. (Graph 2 shows the proportional morbidity for the top 4 diseases (to the total consultations, after excluding the data of 44 health facilities that did not report total consultations).



- ❖ Below chart reflects the trend in the number of SARI cases in 2013 and 2014 in the period between week 38 and 42, noting that the decrease in week 40 and 41 in 2014 (red line) might be due to the low reporting during Eid vacation, and considering the differences in the number of sentinel sites at the two reporting periods where in 2013 the number of reporting hospitals was 65, while in 2014 was 102.

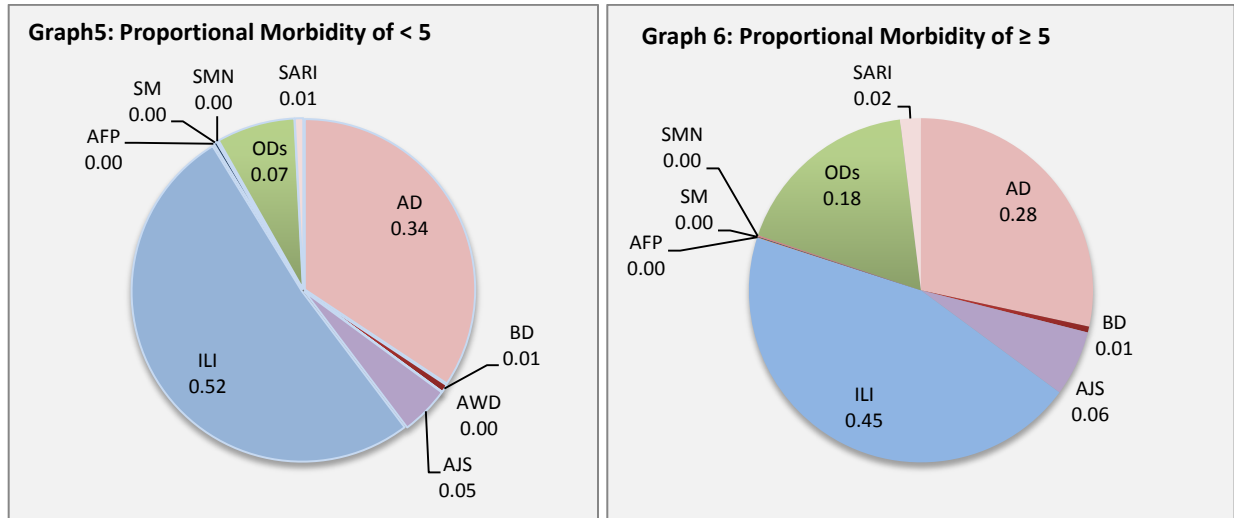


- ❖ Graph 4 displays the distribution of the (4,113) Measles cases per governorate between wk1-w43/2014, out of which 61% among < 5 and 39 % among ≥ 5 year age groups. DeirEzore and Al Raqqa continue in their high reported number of cases in this period.



- ❖ In total, 2,473 cases were reported as “other diseases”. The most important diseases reported within this group were: 421 cases of Leishmaniasis (most of which were reported from Idleb 52%), 201 cases of Typhoid (most of which were reported from DierEzore 47% and Idleb 19%), 101 cases of Brucellosis (most of which were reported from DierEzore 32%), 38 cases of Pertussis, and 13 case of TB.

- ❖ 54% of the cases were distributed among ≥ 5 age group.
- ❖ ILI consists (52%) of the cases among <5 and (45%) among ≥ 5 , while AD cases consists (34 %) among <5 and (28%) among ≥ 5 .
- ❖ Graphs 5 and 6 below show the proportional morbidity among < 5 and ≥ 5 year age groups respectively.



- ❖ 51% of the cases were distributed among males.

■ The Response

AFP: Stool samples were collected from the AFP case and sent to the reference lab in Damascus. The new round of vaccination campaign was implemented in this week (19 – 23) October.

AWD: The 3 Cases detected in Hamah revealed to be AD.

Meningitis: Meningitis cases detected are not clustered. Cases were managed properly; and investigation forms were filled for some cases but not all; it shows that most of the cases are viral meningitis not bacterial. Preventive therapy was provided as necessary for contacts of the probable bacterial meningitis cases.

SARI: 300,000 influenza vaccines were procured to be distributed for high risk groups including Health care workers who are in direct contact with SARI patient in ICU and elderly particularly who have chronic diseases in the IDPs shelters in at health facility level. The vaccines expected to be delivered in end of October 2014.

BD: cases are not clustered. All cases were managed properly.

Table-1: Distribution of cases per age group, and by Governorate-week-43, 2014:

Code	Age group	Sweida	Hamah	Daraa	Aleppo	Damascus	DierEzor	Idleb	Homs	Lattakia	Rural Damascus	Tartous	Qunaitra	Raqua	Hassaka	Grand Total
AD	< 5	147	95	67	284	503	553	348	59	212	297	141	73	111	72	2962
	≥ 5	157	84	103	231	328	638	342	65	172	290	320	69	63	51	2913
BD	< 5	1	0	2	0	4	28	0	0	8	0	1	2	2	16	64
	≥ 5	4	0	1	0	8	3	0	0	8	0	0	11	2	20	57
AWD	< 5	0	3	0	0	0	0	0	0	0	0	0	0	0	0	3
	≥ 5	0	0	0	0	0	0	0	0	0	0	0	0	0	0	0
AJS	< 5	1	17	18	30	77	65	132	20	8	10	0	3	11	7	399
	≥ 5	6	48	10	60	76	121	126	37	38	62	2	24	12	11	633
ILI	< 5	402	104	131	554	508	552	465	60	505	508	452	102	39	65	4447
	≥ 5	354	158	169	556	436	590	531	100	272	521	689	135	28	63	4602
AFP	< 5	0	1	0	0	1	0	1	1	0	1	0	0	0	0	5
	≥ 5	0	0	0	0	2	2	0	1	0	0	0	0	0	0	5
SM	< 5	3	0	0	0	2	3	17	0	0	2	0	0	0	0	27
	≥ 5	0	0	0	0	0	4	1	0	0	0	0	0	0	0	5
SMN	< 5	1	2	0	0	5	0	4	0	0	1	0	0	3	0	16
	≥ 5	0	1	1	0	5	0	0	0	1	2	0	0	4	0	14
SARI	< 5	9	16	0	0	17	25	0	0	0	0	0	0	0	2	69
	≥ 5	11	8	0	0	169	10	1	0	0	1	0	0	0	0	200
Others	< 5	19	20	24	121	41	34	86	18	7	153	10	84	5	19	641
	≥ 5	10	149	112	324	166	175	246	77	32	384	60	89	4	4	1832
Total < 5		583	258	242	989	1158	1260	1053	158	740	972	604	264	171	181	8633
Total ≥ 5		542	448	396	1171	1190	1543	1247	280	523	1260	1071	328	113	149	10261
Total		1125	706	638	2160	2348	2803	2300	438	1263	2232	1675	592	284	330	18894