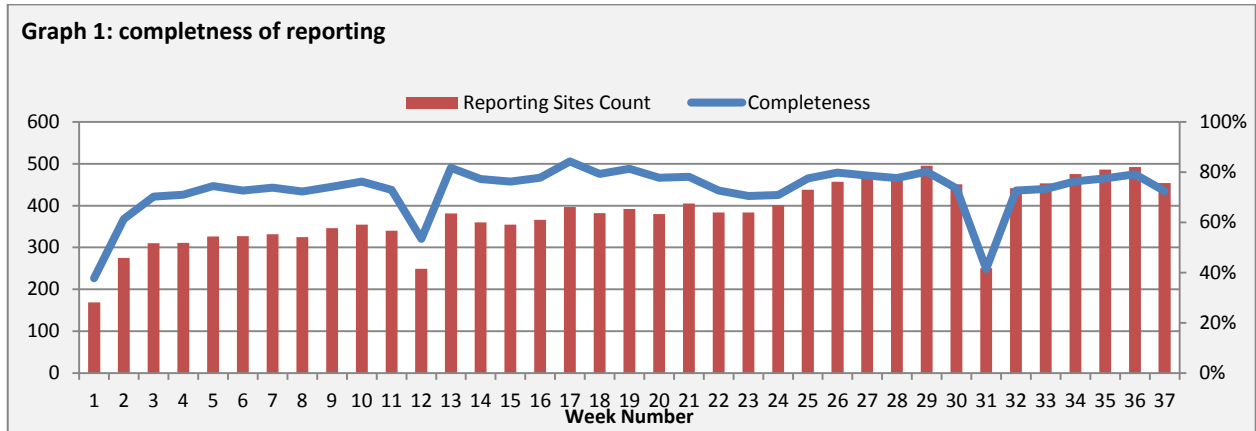


**Highlights:**

- ❖ 1 AFP case was detected in Hamah.

**\* Completeness & Timeliness of Reporting**

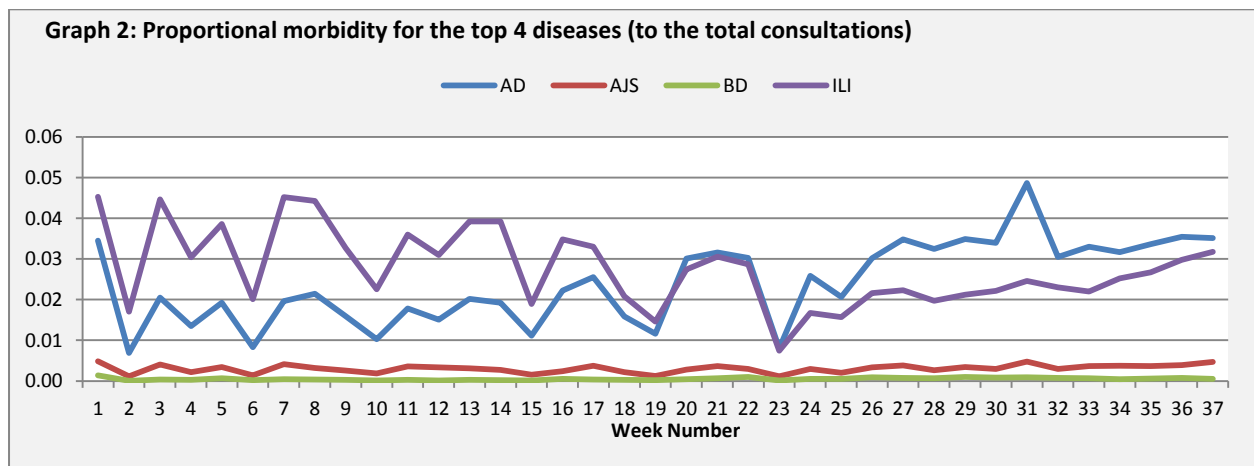
- ❖ The overall completeness of reporting was 72%; (454 out of total 627 EWARS sentinel sites). (See Graph 1). 14 governorates have reported this week.



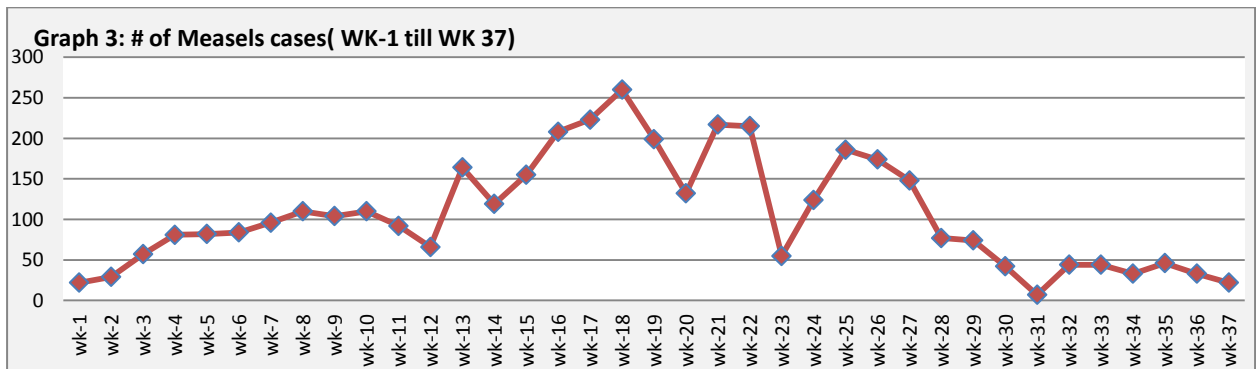
- ❖ Timeliness of reporting is 87%.

**▪ The Morbidity Cases**

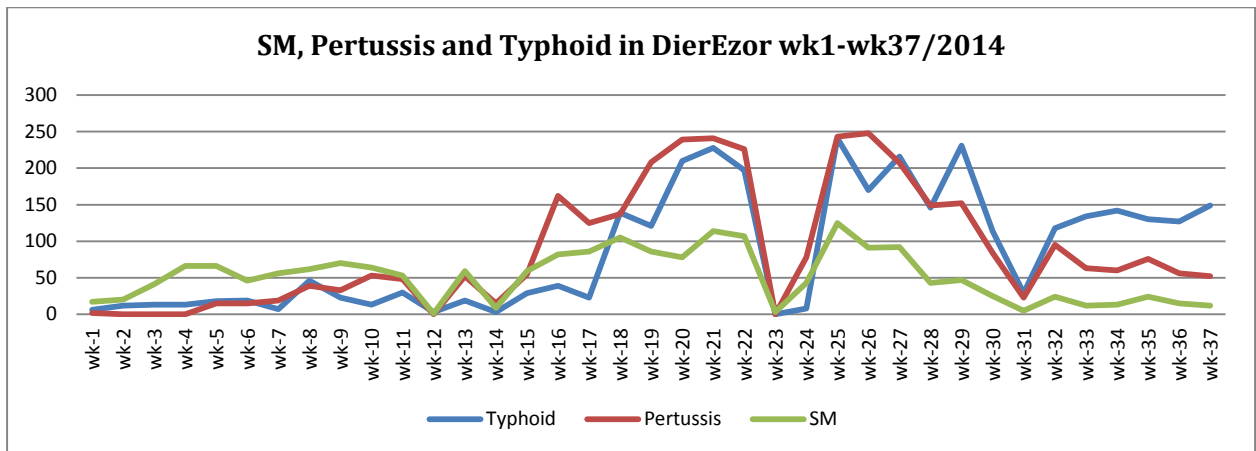
Out of the 135,867 total consultations, a total of 12,401 cases were reported; of which 5,095 cases were Acute Diarrhoea (41%), and 4,421 cases were Influenza like Illness (36%), 655 cases of AJS, 81 cases of Bloody Diarrhoea, 86 cases of Sever Acute Respiratory Infection, 22 cases of Suspected Measles, 24 cases of Meningitis, 1 case of AFP. (Graph 2 shows the proportional morbidity for the top 4 diseases (to the total consultations, after excluding the data of 53 health facilities that did not report total consultations)).



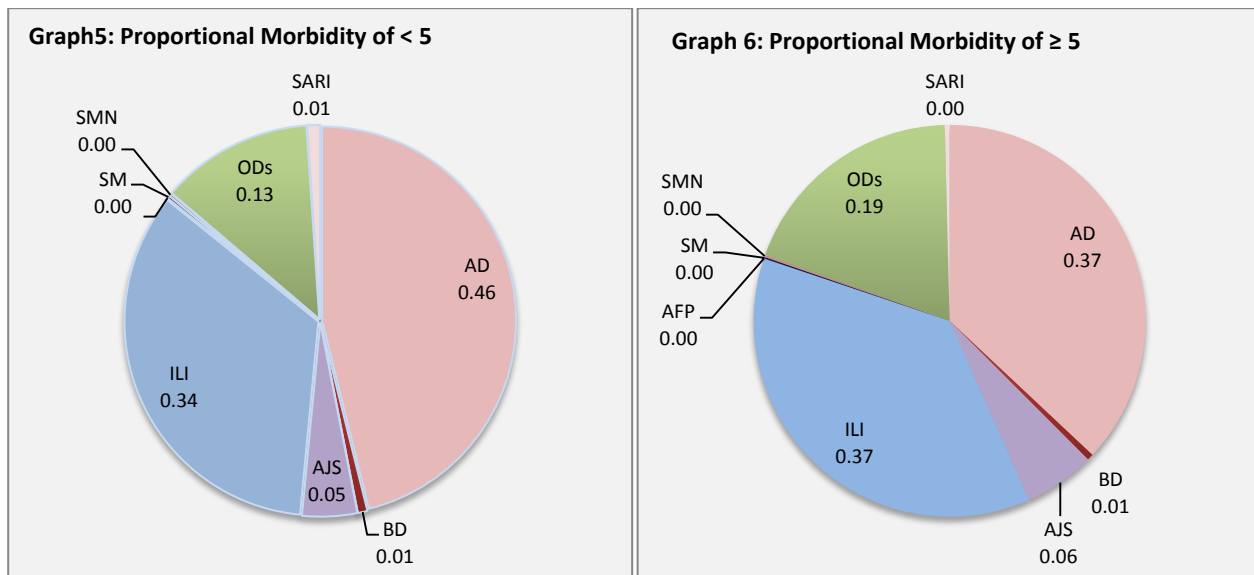
- ❖ Below chart reflects the trend in the number of suspected measles cases between week 1 and week 37 (2014). The notable decrease in the number of cases might be due to the acquired immunity among the children due to previous infection with measles. Measles campaigns also with the improvement in the routine vaccination might also contributed to this decrease.



- ❖ Below graph (4) reflects the trend in the number of Pertussis, Typhoid and suspected measles cases reported from DierEzor between week 1 and week 37.



- ❖ In total, 2,016 cases were reported as “other diseases”. The most important diseases reported within this group were: 333 cases of Leishmaniasis (most of which were reported from Idleb 65%) 258 cases of Typhoid (most of which were reported from DierEzor 58% and Idleb 27%), 132 cases of Brucellosis (most of which were reported from DierEzor 38%), 55 cases of Pertussis (most of which were reported from DierEzor 95%), and 15 case of TB.
- ❖ 55% of the cases were distributed among  $\geq 5$  age group.
- ❖ The most common cases among  $<5$ : AD cases were (46%) and ILI (34%). Graphs 6 and 7 below show the proportional morbidity among  $< 5$  and  $\geq 5$  year age groups respectively.
- ❖ Cases were distributed equally among males and female.



▪ **The Response**

**AFP:** Stool samples were collected from the AFP case and sent to the reference lab in Damascus. The new round of vaccination campaign will be implemented between 19 and 23 of October 2014.

**Meningitis:** Meningitis cases detected are not clustered. Cases were managed properly; and investigation forms were filled for some cases but not all; it shows that most of the cases are viral meningitis not bacterial. Preventive therapy was provided as necessary for contacts of the probable bacterial meningitis cases.

**BD:** cases are not clustered. All cases were managed properly.

**Table-1: Distribution of cases per age group, and by Governorate-week-37, 2014:**

Code	Age group	Sweida	Hamah	Daraa	Aleppo	Damascus	DierEzor	Idleb	Homs	Lattakia	Rural Damascus	Tartous	Qunaitra	Raqa	Hassaka	Grand Total	
AD	<5	145	127	116	165	395	574	207	40	273	191	115	24	168	25	2565	5095
	≥5	144	121	114	122	477	555	212	52	189	255	180	26	51	32	2530	
BD	<5	3	0	0	0	6	20	0	0	8	0	0	2	0	6	45	81
	≥5	5	0	0	0	6	6	0	0	6	0	0	1	0	12	36	
AWD	<5	0	0	0	0	0	0	0	0	0	0	0	0	0	0	0	0
	≥5	0	0	0	0	0	0	0	0	0	0	0	0	0	0	0	
AJS	<5	5	19	1	4	27	52	104	9	8	9	1	1	11	4	255	655
	≥5	9	33	11	16	47	125	90	9	21	26	2	3	3	5	400	
ILI	<5	256	30	68	150	370	361	129	34	149	143	163	2	4	47	1906	4421
	≥5	331	90	126	154	347	483	267	32	100	264	284	3	2	32	2515	
AFP	<5	0	0	0	0	0	0	0	0	0	0	0	0	0	0	0	1
	≥5	0	1	0	0	0	0	0	0	0	0	0	0	0	0	1	
SM	<5	0	0	0	0	3	7	0	0	3	0	0	0	0	0	13	22
	≥5	0	1	0	0	0	5	0	0	0	3	0	0	0	0	9	
SMN	<5	1	3	0	1	6	1	0	0	0	0	0	0	1	0	13	24
	≥5	2	4	0	0	3	0	0	0	1	0	0	1	0	0	11	
SARI	<5	0	8	0	0	39	4	7	0	0	0	0	0	0	1	59	86
	≥5	9	5	0	0	6	2	3	0	0	0	0	0	0	2	27	
Others	<5	1	9	10	143	42	91	161	3	6	164	14	60	2	0	706	2016
	≥5	11	90	80	145	176	255	165	16	44	240	29	50	9	0	1310	
Total <5		411	196	195	463	888	1110	608	86	447	507	293	89	186	83	5562	12401
Total ≥5		511	345	331	437	1062	1431	737	109	361	788	495	84	65	83	6839	
<b>Total</b>		<b>922</b>	<b>541</b>	<b>526</b>	<b>900</b>	<b>1950</b>	<b>2541</b>	<b>1345</b>	<b>195</b>	<b>808</b>	<b>1295</b>	<b>788</b>	<b>173</b>	<b>251</b>	<b>166</b>	<b>12401</b>	