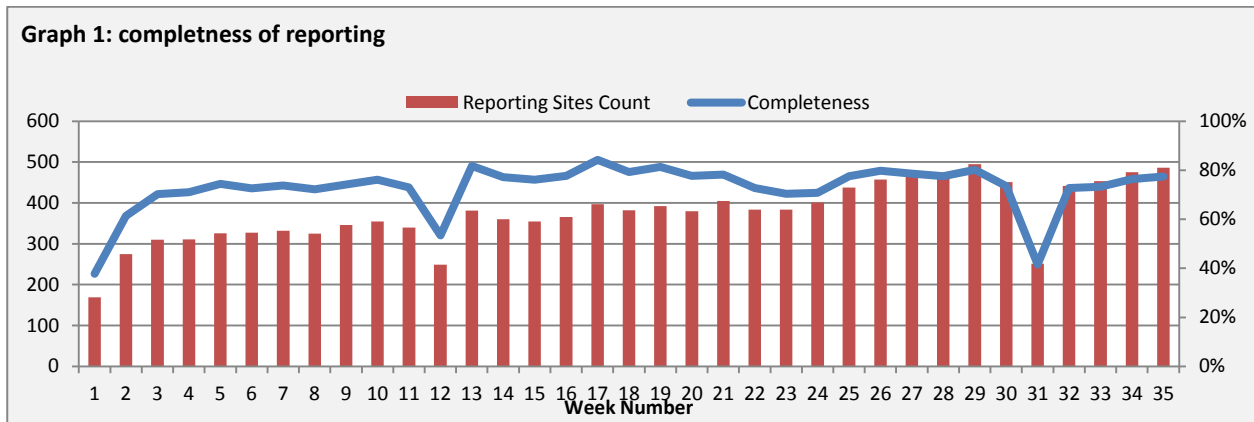


**Highlights:**

- ❖ 4 AFP cases were detected in Damascus, Lattakia, DierEzor, and Idleb.

**\* Completeness & Timeliness of Reporting**

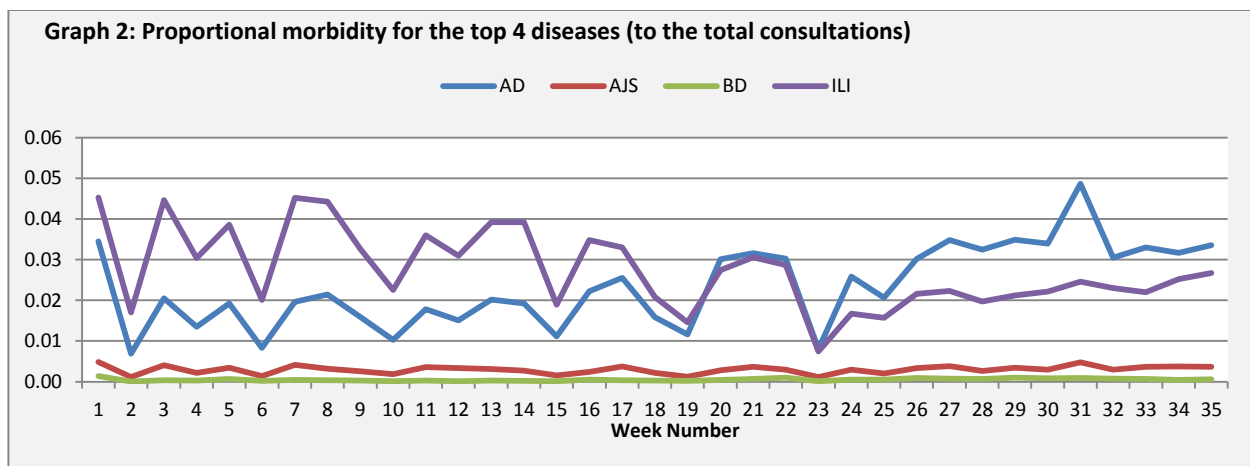
- ❖ The overall completeness of reporting was 78%; (486 out of total 627 EWARS sentinel sites). (See Graph 1). 14 governorates have reported this week.



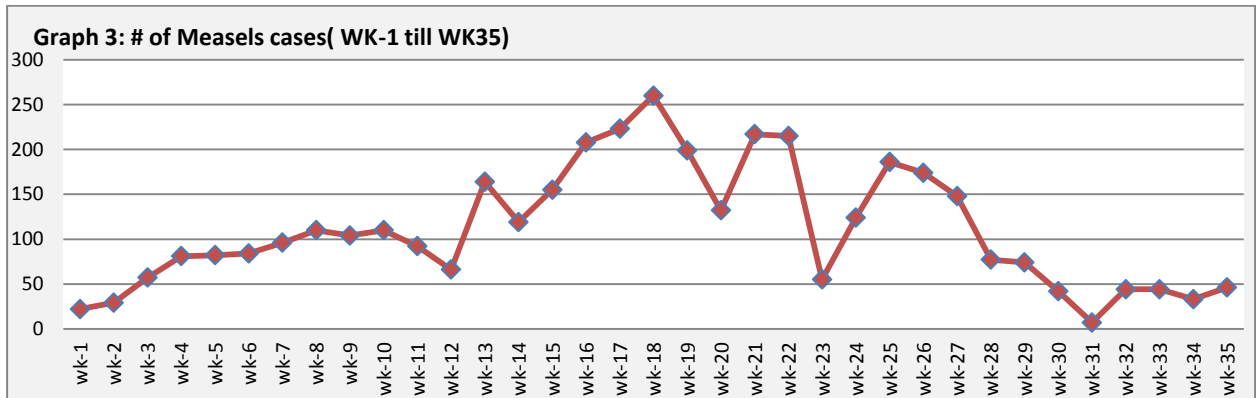
- ❖ Timeliness of reporting is 81%.

**▪ The Morbidity Cases**

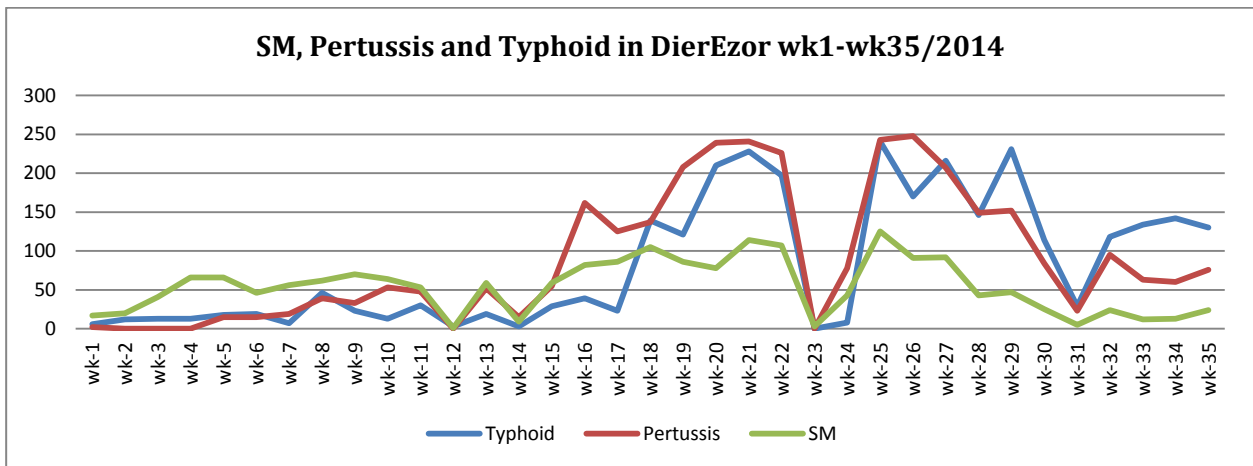
Out of the 147,606 total consultations, a total of 12,278 cases were reported; of which 5,550 cases were Acute Diarrhoea (45%), and 4,118 cases were Influenza like Illness (34%), 606 cases of AJS, 101 cases of Bloody Diarrhoea, 46 cases of Suspected Measles, 40 cases of Sever Acute Respiratory Infection, 21 cases of Meningitis, and 4 AFP cases. (Graph 2 shows the proportional morbidity for the top 4 diseases (to the total consultations, after excluding the data of 64 health facilities that did not report total consultations)).



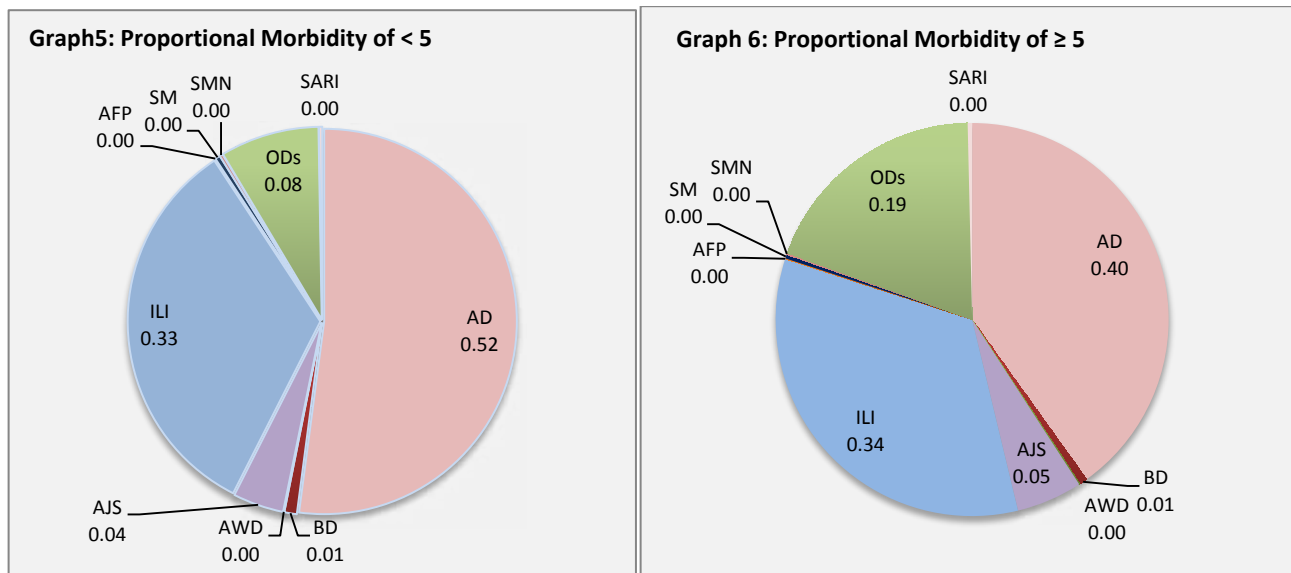
- ❖ Below chart reflects the trend in the number of suspected measles cases between week 1 and week 35 (2014). A notable decrease in the number of measles cases continued to be remarked during this week.



- ❖ Below graph (4) reflects the trend in the number of Pertussis, Typhoid and suspected measles cases reported from DierEzor between week 1 and week 35.



- ❖ In total, 1,792 cases were reported as “other diseases”. The most important diseases reported within this group were: 295 cases of Typhoid (most of which were reported from DierEzor 44% and Idleb 37%), 146 cases of Leishmaniasis (most of which were reported from Aleppo 40%), 146 cases of Brucellosis (most of which were reported from DierEzor 28%), 84 cases of Pertussis (most of which were reported from DierEzor 90%), and 30 case of TB.
- ❖ 58% of the cases were distributed among  $\geq 5$  age group.
- ❖ The most common cases among  $<5$ : AD cases were (52%) and ILI (33%). Graphs 6 and 7 below show the proportional morbidity among  $< 5$  and  $\geq 5$  year age groups respectively.
- ❖ 51% of the cases were reported among males.



▪ **The Response**

**AFP:** Stool samples were collected from the AFP cases and sent to the reference lab in Damascus. The new round of vaccination campaign will be implemented between 31th August and 4th September.

**Meningitis:** Meningitis cases detected are not clustered. Cases were managed properly; and investigation forms were filled for some cases but not all; it shows that most of the cases are viral meningitis not bacterial. Preventive therapy was provided as necessary for contacts of the probable bacterial meningitis cases.

**BD:** cases are not clustered. All cases were managed properly.

Other response measures were also taken with regard to case management of Leishmaniasis, Hepatitis, TB and BRU cases. In addition to ensuring the availability of medicines and the implementation of sanitation measures in accordance with available capacity.

**Table-1: Distribution of cases per age group, and by Governorate-week-35, 2014:**

Code	Age group	Sweida	Hamah	Daraa	Aleppo	Damascus	DierEzor	Idleb	Homs	Lattakia	Rural Damascus	Tartous	Qunaitra	Raqua	Hassaka	Grand Total	
AD	< 5	161	62	104	260	434	604	171	56	365	212	98	55	86	21	2689	5550
	≥ 5	216	100	77	237	543	568	208	50	260	265	194	84	51	8	2861	
BD	< 5	9	0	4	0	16	14	0	0	9	0	0	2	0	0	54	101
	≥ 5	6	0	0	0	14	4	0	0	10	3	0	4	0	6	47	
AWD	< 5	0	0	0	0	0	0	0	0	0	0	0	0	0	0	0	0
	≥ 5	0	0	0	0	0	0	0	0	0	0	0	0	0	0	0	
AJS	< 5	2	4	15	9	26	15	95	5	11	23	0	6	9	0	220	606
	≥ 5	2	25	10	34	60	69	105	14	27	24	1	9	4	2	386	
ILI	< 5	172	14	39	116	228	342	96	27	207	146	170	155	2	0	1714	4118
	≥ 5	246	72	36	130	331	417	232	39	112	304	369	113	3	0	2404	
AFP	< 5	0	0	0	0	0	0	1	0	0	0	0	0	0	0	1	4
	≥ 5	0	0	0	0	1	1	0	0	1	0	0	0	0	0	3	
SM	< 5	0	0	0	1	12	5	1	0	1	1	0	0	1	0	22	46
	≥ 5	0	0	0	0	2	19	2	0	0	1	0	0	0	0	24	
SMN	< 5	3	7	0	1	1	0	0	0	1	0	0	0	0	0	13	21
	≥ 5	0	0	0	0	6	0	0	0	0	1	0	1	0	0	8	
SARI	< 5	0	8	0	0	5	1	0	0	0	0	0	0	0	0	14	40
	≥ 5	4	2	0	0	20	0	0	0	0	0	0	0	0	0	26	
Others	< 5	7	2	6	149	42	44	16	8	10	85	7	45	7	0	428	1792
	≥ 5	11	18	43	291	184	280	102	61	26	248	28	70	2	0	1364	
Total < 5		354	97	168	536	764	1025	380	96	604	467	275	263	105	21	5155	12278
Total ≥ 5		485	217	166	692	1161	1358	649	164	436	846	592	281	60	16	7123	