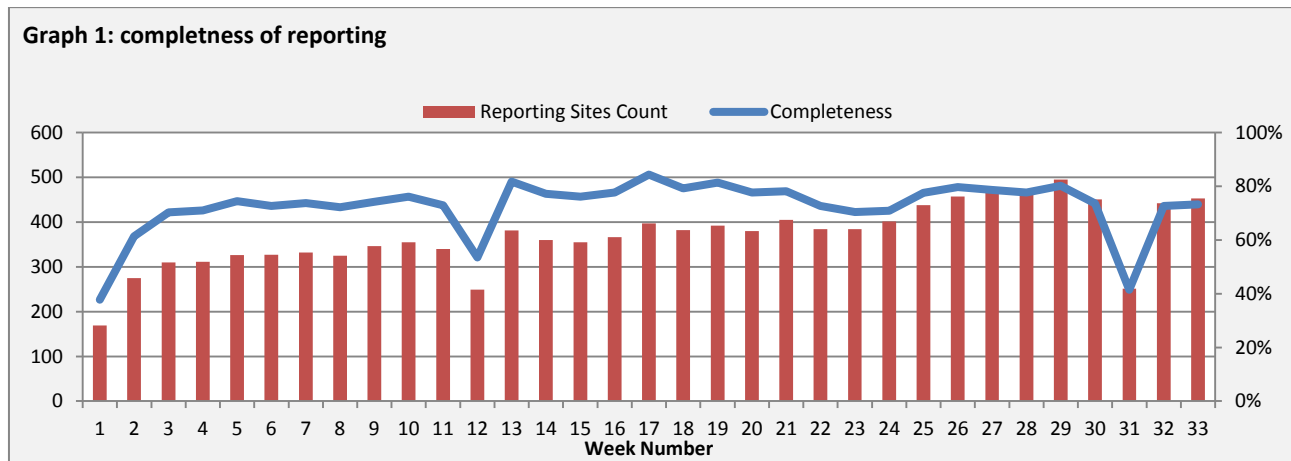


Highlights:

- ❖ 1 AFP case was detected in Damascus.

*** Completeness & Timeliness of Reporting**

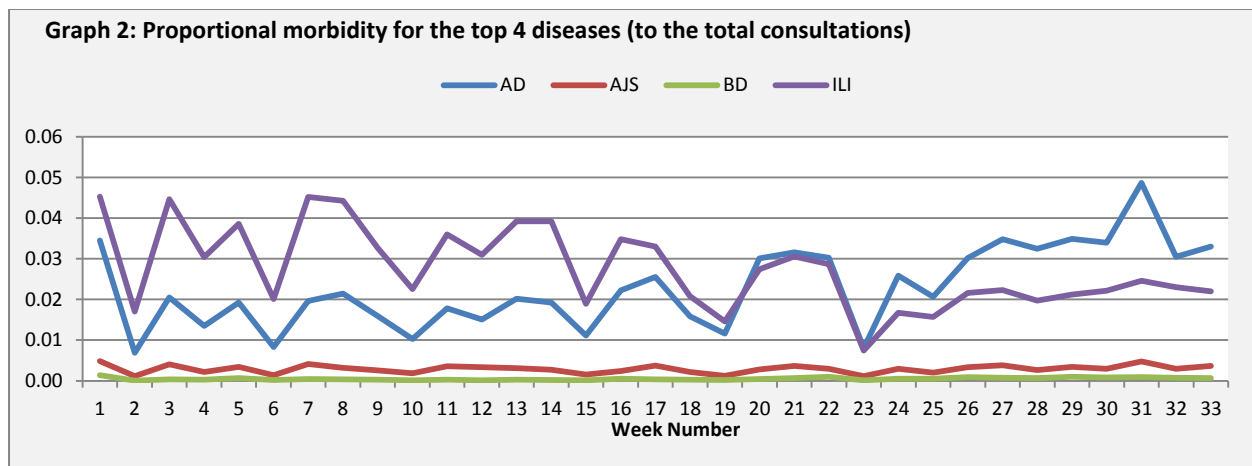
- ❖ The overall completeness of reporting was 73%; (453 out of total 618 EWARS sentinel sites). (See Graph 1). 14 governorates have reported this week.



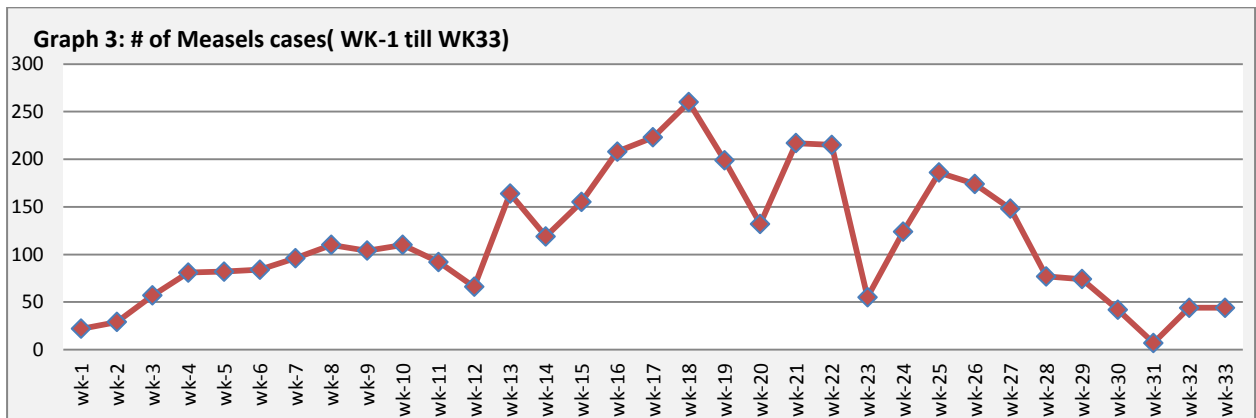
- ❖ Timeliness of reporting is 90%.

▪ The Morbidity Cases

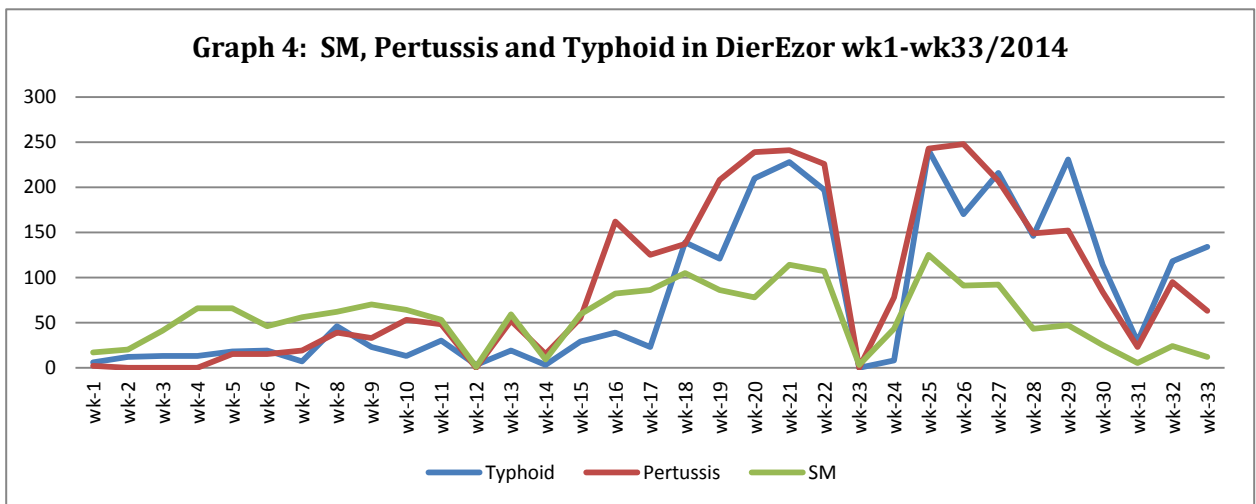
Out of the 145,396 total consultations, a total of 11,107 cases were reported; of which 5,600 cases were Acute Diarrhoea (50%), and 3,372 cases were Influenza like Illness (30%), 591 cases of AJS, 111 cases of Bloody Diarrhoea, 78 cases of Sever Acute Respiratory Infection, 44 cases of Suspected Measles, 22 cases of Meningitis, and 1 case of AFP. (Graph 2 shows the proportional morbidity for the top 4 diseases (to the total consultations, after excluding the data of 54 health facilities that did not report total consultations).



- ❖ Below chart reflects the trend in the number of suspected measles cases between week 1 and week 33 (2014) a notable decrease in the number of measles cases starts to be remarked.



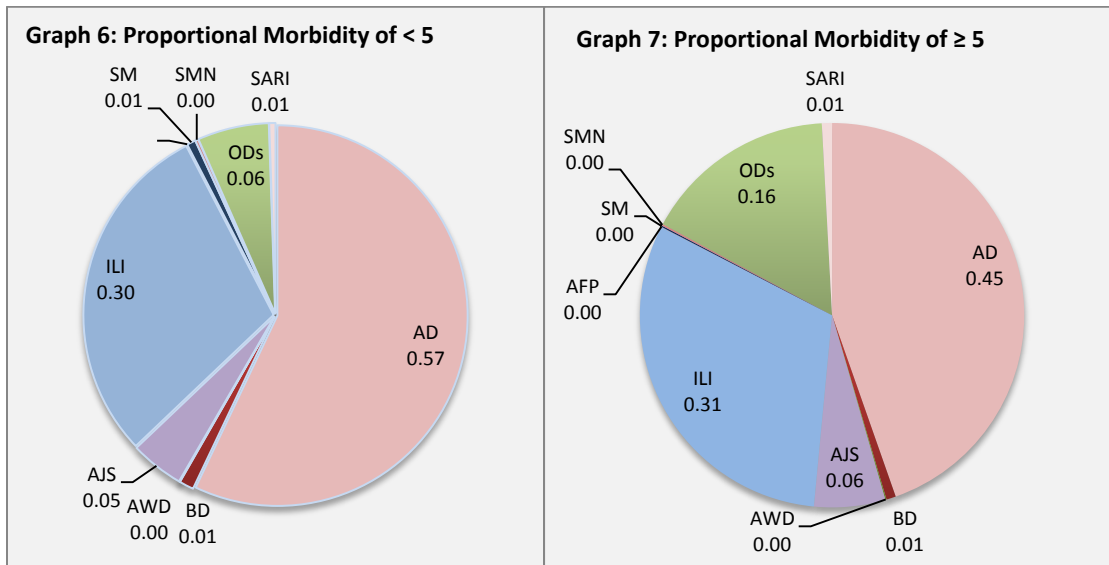
- ❖ Below graph (4) reflects the trend in the number of Pertussis, Typhoid and suspected measles cases reported from DierEzor between week 1 and week 33.



- ❖ In total, 1,288 cases were reported as “other diseases”. The most important diseases reported within this group were: 188 cases of Typhoid (most of which were reported from DierEzor 71%), 132 cases of Brucellosis (most of which were reported from DierEzor 40%), 127 cases of Leishmaniasis (most of which were reported from Hamah 40%), 70 cases of Pertussis (most of which were reported from DierEzor 90%), and 13 case of TB.

- ❖ 54% of the cases were distributed among ≥ 5 age group.
- ❖ The most common cases among <5 : AD cases were (57%) and ILI (30%). Graphs 6 and 7 below show the proportional morbidity among < 5 and ≥ 5 year age groups respectively.

- ❖ 52% of the cases were reported among males.



The Response

AFP: Stool samples were collected from the AFP case and sent to the reference lab in Damascus. The new round of vaccination campaign will be implemented between 31st August and 4th September which will be only for hard to reach areas.

Measles: The measles vaccination campaign has been implemented starting from 15 till 23 June 2014; this is in addition to supporting of routine vaccination programs. Further outreach by health partners to better respond to this outbreak is required.

Meningitis: Meningitis cases detected are not clustered. Cases were managed properly; and investigation forms were filled for some cases but not all; it shows that most of the cases are viral meningitis not bacterial. Preventive therapy was provided as necessary for contacts of the probable bacterial meningitis cases.

BD: cases are not clustered. All cases were managed properly.

Other response measures were also taken with regard to case management of Leishmaniasis, Hepatitis, TB and BRU cases. In addition to ensuring the availability of medicines and the implementation of sanitation measures in accordance with available capacity.

Table-1: Distribution of cases per age group, and by Governorate-week-33, 2014:

Code	Age group	Sweida	Hamah	Daraa	Aleppo	Damascus	DierEzor	Idleb	Homs	Lattakia	Rural Damascus	Tartous	Qunaitra	Raqua	Hassaka	Grand Total	
AD	< 5	199	141	69	165	536	620	118	25	382	319	112	69	139	21	2915	5600
	≥ 5	164	153	64	97	544	532	88	20	240	373	248	75	63	24	2685	
BD	< 5	20	2	0	0	7	9	0	0	6	15	1	1	0	2	63	111
	≥ 5	10	1	0	0	12	2	0	0	12	4	0	3	0	4	48	
AWD	< 5	0	0	0	0	0	0	0	0	0	0	0	0	0	0	0	0
	≥ 5	0	0	0	0	0	0	0	0	0	0	0	0	0	0	0	
AJS	< 5	2	15	15	10	15	26	76	0	5	47	0	3	16	2	232	591
	≥ 5	7	35	13	30	57	54	55	1	35	48	1	14	8	1	359	
ILI	< 5	164	55	41	68	269	262	98	2	113	134	124	96	55	25	1506	3372
	≥ 5	204	89	44	78	267	285	100	3	93	256	201	215	14	17	1866	
AFP	< 5	0	0	0	0	0	0	0	0	0	0	0	0	0	0	0	1
	≥ 5	0	0	0	0	1	0	0	0	0	0	0	0	0	0	1	
SM	< 5	2	2	0	0	17	8	3	2	3	0	0	0	1	0	38	44
	≥ 5	0	0	0	0	1	4	0	0	0	1	0	0	0	0	6	
SMN	< 5	3	1	0	0	4	0	0	0	2	0	0	0	3	0	13	22
	≥ 5	0	4	0	0	3	0	0	0	0	0	0	1	1	0	9	
SARI	< 5	1	13	0	0	4	0	2	0	0	7	0	0	0	0	27	78
	≥ 5	5	10	0	0	21	0	5	0	0	10	0	0	0	0	51	
Others	< 5	0	17	11	10	44	50	3	6	5	105	3	50	6	0	310	1288
	≥ 5	15	89	23	31	190	246	4	43	9	225	20	75	8	0	978	
Total < 5		391	246	136	253	896	975	300	35	516	627	240	219	220	50	5104	11107
Total ≥ 5		405	381	144	236	1096	1123	252	67	389	917	470	383	94	46	6003	
Total		796	627	280	489	1992	2098	552	102	905	1544	710	602	314	96	11107	