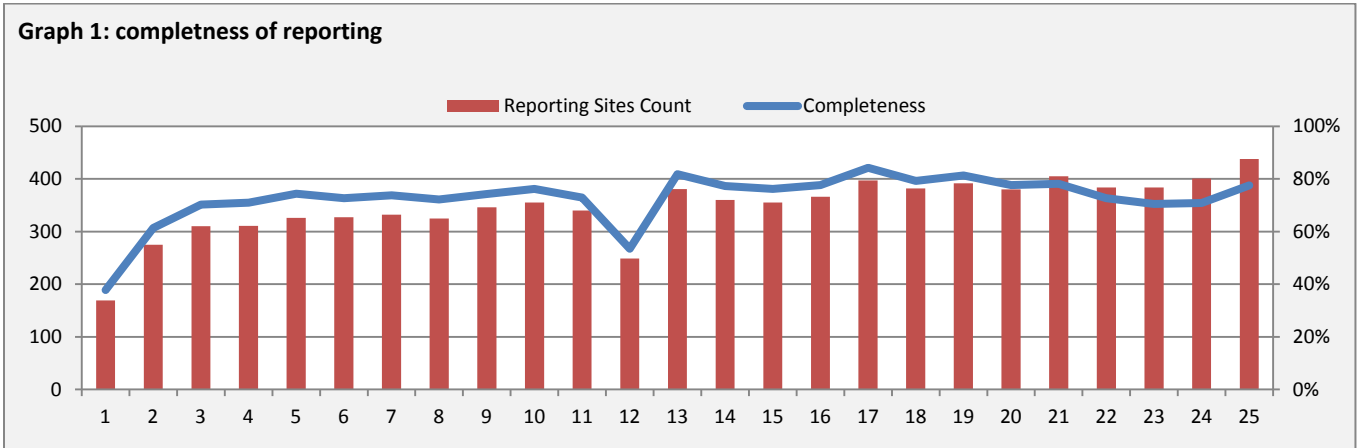


**Highlights:**

- ❖ 9 AWD cases were detected, in Lattakia (7), Tartous(1), and Hassaka(1).
- ❖ 4 AFP cases were detected, in Hamah (2), Damascus (1) and Daraa (1) .
- ❖ A notable increase in bloody diarrhea cases were reported this week from different governorates

**\* Completeness& Timeliness of Reporting**

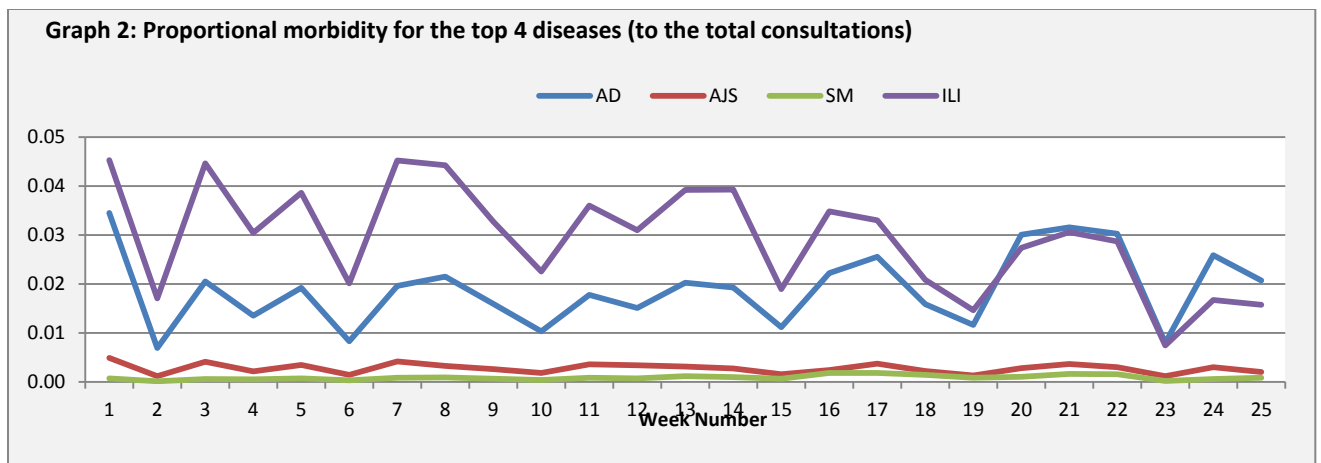
- ❖ The overall completeness of reporting was 78 %; (438 out of total 565 EWARS sentinel sites).  
 (See Graph 1). 14 governorates have reported this week



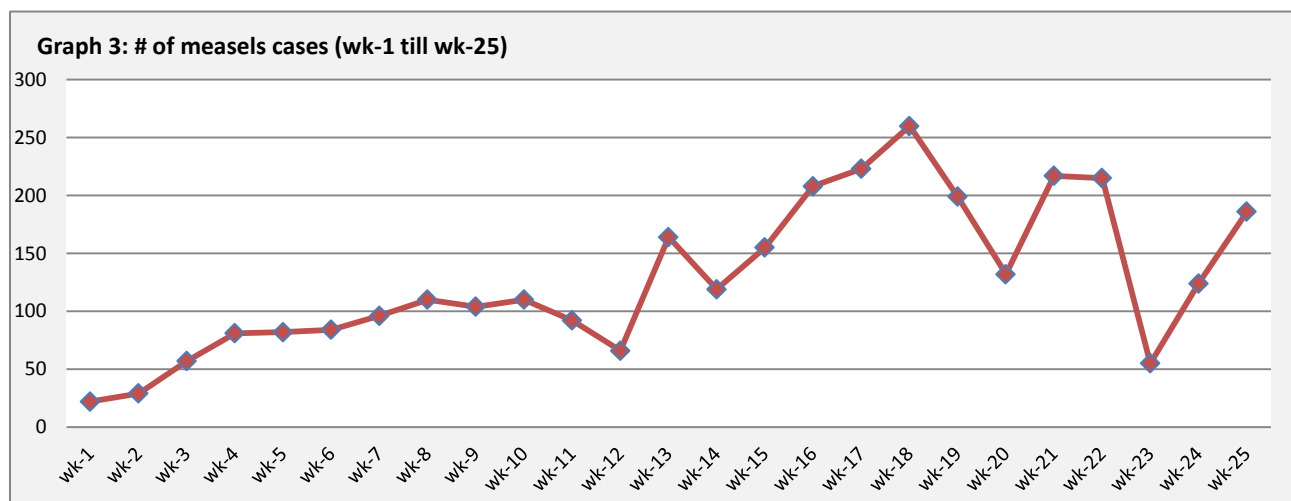
- ❖ Timeliness of reporting is 52%.

**❖ The Morbidity Cases**

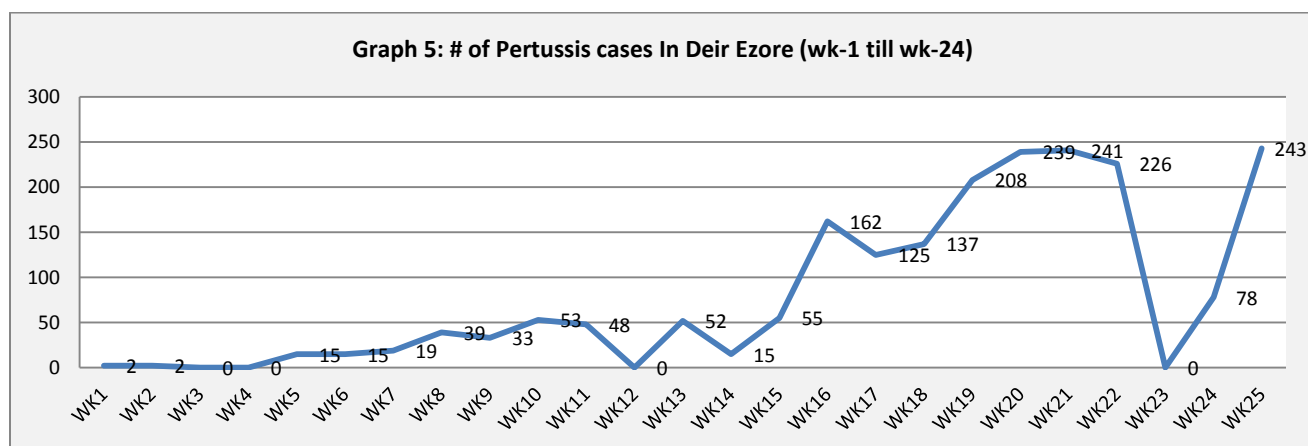
Out of the 217,164 total consultations, a total of 11,532 cases were reported; of which 4,791 cases were Acute Diarrhoea (42%), and 3,543 cases were Influenza like Illness (31%), 530 cases of AJS, 186 cases of Suspected Measles, 125 cases of Bloody Diarrhoea, 69 cases of Sever Acute Respiratory Infection, , 39 cases of Meningitis, 9 cases of AWD and 4 AFP cases. (Graph 2 shows the proportional morbidity for the top 4 diseases (to the total consultations, after excluding the data of 69 health facilities that did not report total consultations)



❖ The delayed data from DierEzor for week 24 were compiled in the data sheet and the graph below shows the continuous increase in the number of suspected measles cases



❖ Below graph reflects the trend in the number of pertussis cases since January 2014. The low number of cases reported in week 23 is due to the remarkable decrease in the number of reports received from this area due to poor communication during this period. Delayed data of week 24 were entered into in the excel sheet to give a better picture of the epidemic

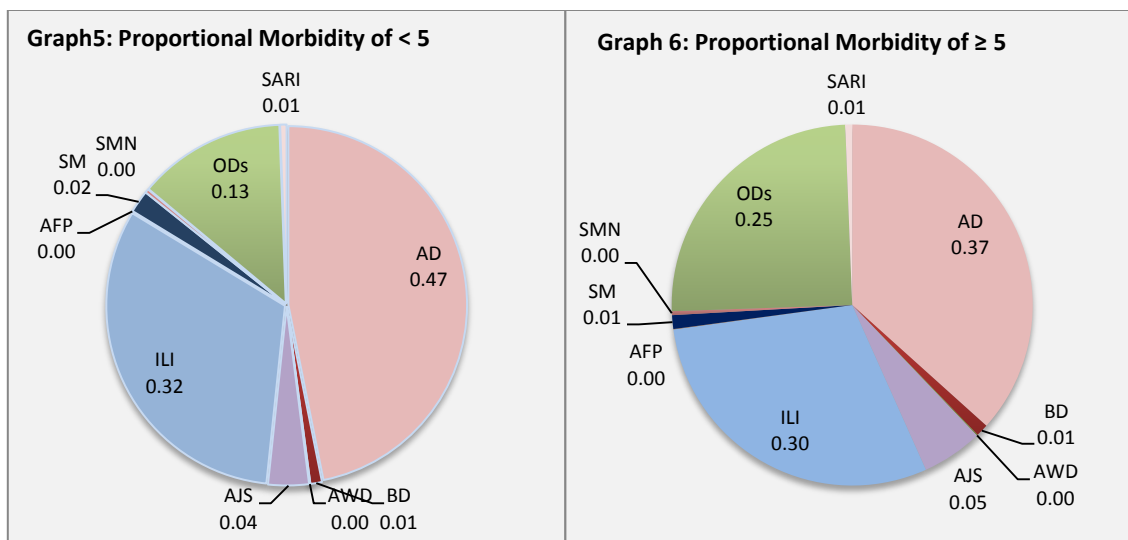


❖ In total, 2,236 cases were reported as “other diseases”. The most important diseases reported within this group were: 283 cases of Pertussis (most of which were reported from DierEzor 86%), 276 cases of Typhoid (most of which were reported from DierEzor 87%), 204 cases of Brucellosis (most of which were reported from Rural Damascus 37%), 189 cases of Leishmaniasis (most of which were reported from DierEzor 35%), and 13 cases of TB.

❖ 52% of the cases were distributed among  $\geq 5$  age group.

❖ The most common cases among  $<5$ : AD cases were (47%) and ILI (32%). Graphs 6 and 7 below show the proportional morbidity among  $< 5$  and  $\geq 5$  year age groups respectively.

❖ 52% of the cases were reported among females.



## ❖ The Response

**AFP:** Stool samples were collected from the AFP case and sent to the reference lab in Damascus. new round of vaccination campaign was implemented between 15th and 19th of June

**Measles:** the measles vaccination campaign has been implemented starting from 15 till 23 June 2014, This is in addition to supporting of routine vaccination programs. Further outreach by health partners to better respond to this outbreak is required

**Water borne diseases (including, typhoid, AWD, BD and AJS) :** A mass media campaign will be conducted to raise population awareness on simple method for water decontamination, safe food handling and hand hygiene. The camping is expected to be launched in the third week of Ramadan and will continue throughout the year using different communication channels. For Bloody diarrhoea cases reported in DierEzor no samples have been collected from the cases in due to the evolving security situation there.

**Meningitis:** Meningitis cases detected are not clustered. Cases were managed properly; and investigation forms were filled for some cases but not all; it shows that most of the cases are viral meningitis not bacterial. Preventive therapy was provided as necessary for contacts of the probable bacterial meningitis cases.

Other response measures were also taken with regard to case management of Leishmaniasis, Hepatitis, TB and BRU cases. In addition to ensuring the availability of medicines and the implementation of sanitation measures in accordance with available capacity

**Table-1: Distribution of cases per age group, and by Governorate-week-25, 2014:**

Code	Age group	Sweida	Hamah	Daraa	Aleppo	Damascus	DierEzor	Idleb	Homs	Lattakia	Rural Damascus	Tartous	Qunaitra	Raqua	Hassaka	Grand Total	
AD	< 5	179	168	97	135	565	530	57	62	167	223	97	34	253	21	2588	4791
	≥ 5	147	105	63	143	496	538	63	63	116	164	111	21	117	56	2203	
BD	< 5	5	1	2	0	7	22	0	0	7	0	0	1	9	4	58	125
	≥ 5	7	2	0	0	14	18	0	0	4	2	1	3	3	13	67	
AWD	< 5	0	0	0	0	0	0	0	0	4	0	0	0	0	0	4	9
	≥ 5	0	0	0	0	0	0	0	0	3	0	1	0	0	1	5	
AJS	< 5	2	16	8	6	25	51	24	21	10	16	1	5	14	4	203	530
	≥ 5	4	35	9	12	91	53	31	25	18	16	1	2	27	3	327	
ILI	< 5	184	69	50	24	289	368	45	29	202	150	238	27	76	17	1768	3543
	≥ 5	146	72	50	16	276	412	173	36	87	175	257	25	22	28	1775	
AFP	< 5	0	0	1	0	1	0	0	0	0	0	0	0	0	0	2	4
	≥ 5	0	2	0	0	0	0	0	0	0	0	0	0	0	0	2	
SM	< 5	0	1	1	0	5	70	17	1	1	2	1	0	13	0	112	186
	≥ 5	0	0	0	0	1	55	7	1	3	0	4	0	3	0	74	
SMN	< 5	1	3	0	0	1	1	5	0	0	0	0	0	7	0	18	39
	≥ 5	1	1	0	0	7	0	3	0	0	0	0	0	8	1	21	
SARI	< 5	5	14	0	0	10	1	0	0	0	0	0	0	2	0	32	69
	≥ 5	6	3	0	0	21	7	0	0	0	0	0	0	0	0	37	
Others	< 5	4	22	13	17	43	152	11	166	1	225	33	33	18	0	738	2236
	≥ 5	9	121	38	12	185	496	5	160	14	310	85	35	22	6	1498	
Total < 5		380	294	172	182	946	1195	159	279	392	616	370	100	392	46	5523	11532
Total ≥ 5		320	341	160	183	1091	1579	282	285	245	667	460	86	202	108	6009	
<b>Total</b>		<b>700</b>	<b>635</b>	<b>332</b>	<b>365</b>	<b>2037</b>	<b>2774</b>	<b>441</b>	<b>564</b>	<b>637</b>	<b>1283</b>	<b>830</b>	<b>186</b>	<b>594</b>	<b>154</b>	<b>11532</b>	