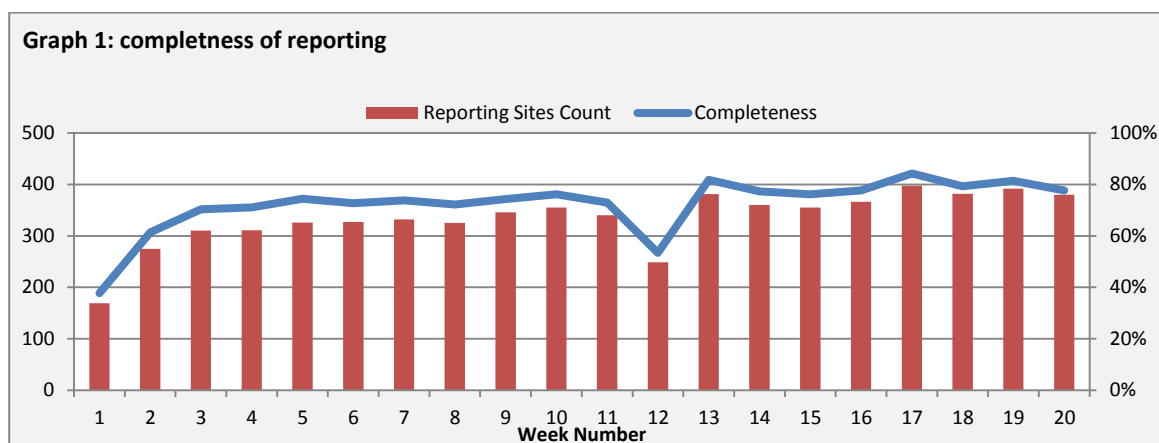


Highlights:

- ❖ 6 AFP cases were detected in Damascus and Homs.
- ❖ A notable decrease in the number of suspected measles has been observed

❖ Completeness& Timeliness of Reporting

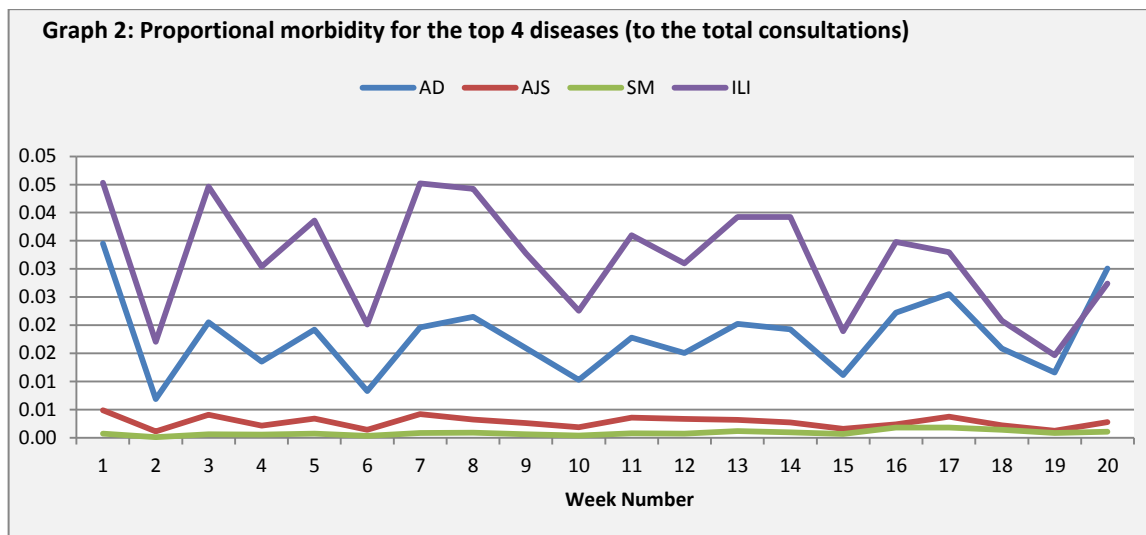
The overall completeness of reporting was 78%; (380 out of total 489 EWARS sentinel sites). (See Graph 1). 14 governorates have reported this week.



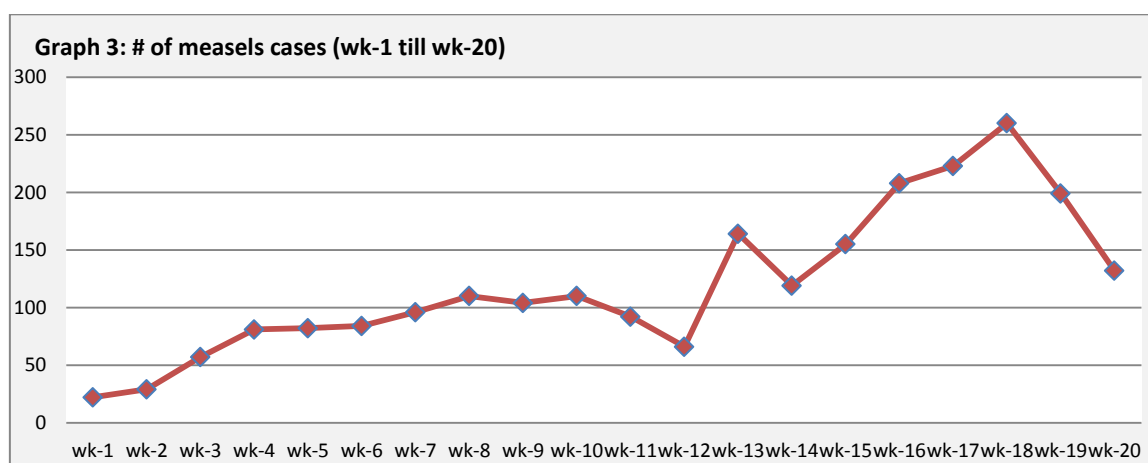
- ❖ Timeliness of reporting is 72%.

❖ The Morbidity Cases

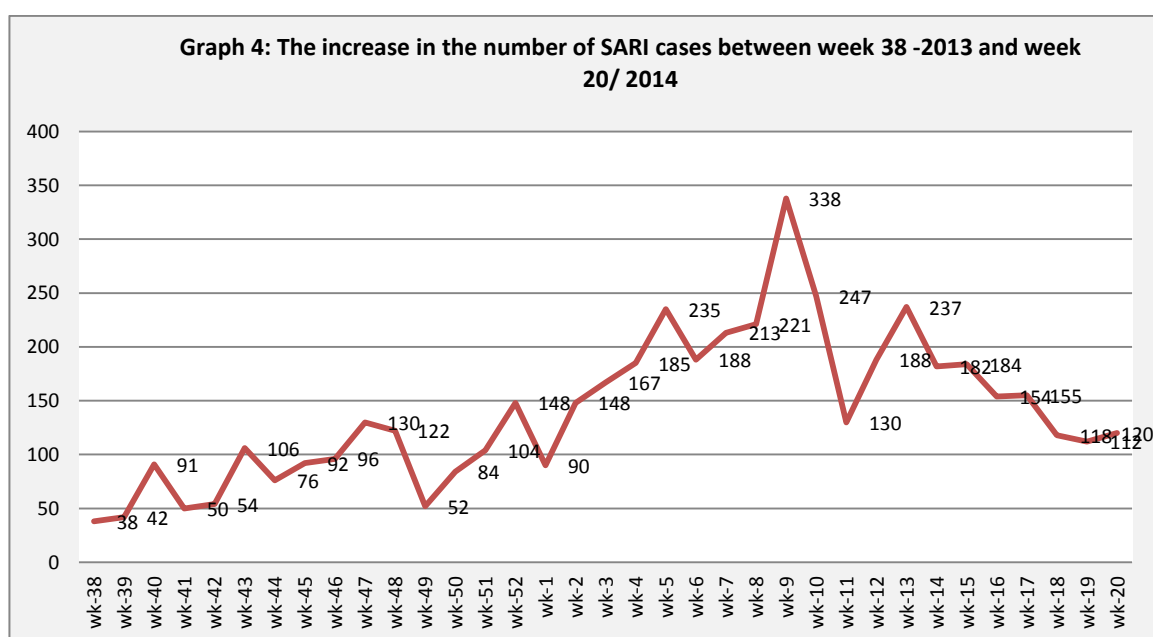
Out of the 125,274 total consultations, a total of 10,014 cases were reported; of which 4,035 cases were Acute Diarrhoea (40%), and 3,690 cases were Influenza like Illness (37%), 443 cases of AJS, 132 cases of Suspected Measles, 120 cases of Severe Acute Respiratory Infection, 67 cases of Bloody Diarrhoea, 33 cases of Meningitis, 6 AFP cases, and 3 AWD cases. (Graph 2 shows the proportional morbidity for the top 4 diseases (to the total consultations, after excluding the data of 54 health facilities that did not report total consultations)).



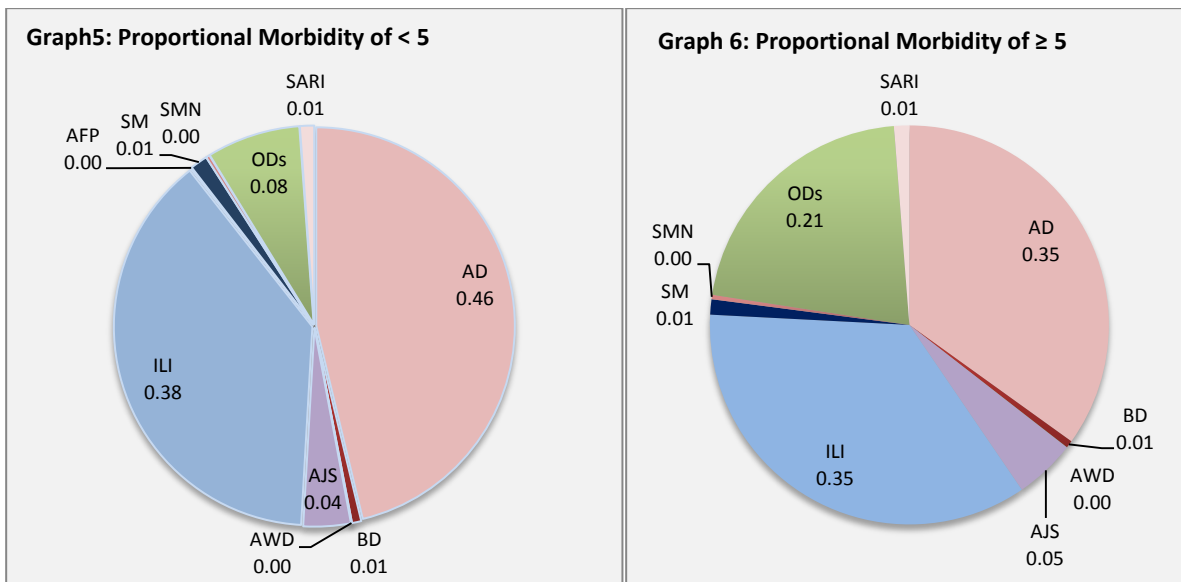
- ❖ A decrease in the number of suspected measles cases has been reported also this week



- ❖ The graph 4 below illustrates the trend of the decrease in SARI cases over the previous 20 weeks:



- ❖ In total, 1485 cases were reported as “other diseases”. The most important diseases reported within this group were: 238 cases of Typhoid (most of which were reported from DierEzor 88%), 152 cases of Brucellosis (most of which were reported from Rural Damascus 30%) 87 cases of Leishmaniasis, and 14 cases of TB.
- ❖ 53% of the cases were distributed among ≥ 5 age group.
- ❖ The most common cases among < 5 : AD cases were (46%) and ILI (38%). Graphs 5 and 6 below show the proportional morbidity among < 5 and ≥ 5 year age groups respectively.
- ❖ 51% of the cases were reported among males.



❖ The Response

- ❖ **AFP:** Stool samples were collected from the AFP cases and sent to the reference lab in Damascus. The new round of vaccination campaign has been implemented between 6th and 10th of May through the global vaccination week .
- ❖ **AWD:** the three scattered cases reported were managed properly. No stool samples were collected
- ❖ **Typhoid:** In addition to sending the needed medicines to manage the cases identified, the following measures were taken to address this emergency from the WASH sector:
 - 400,000 Aqua tabs for disinfecting drinking water were sent. Leaflets were printed with instructions for proper usage.
 - Six water purification units with a combined treatment capacity of 576 m3/day were also sent. These units will provide safe drinking water for approximately 40,000 people per day.
 - 20 residual chlorine testing kits were sent for verification of water quality from tankers.
 - 4 bacteriological water quality testing kits were sent in order to test for presence of bacteriological contamination in drinking water sources (river and groundwater).
- ❖ **Meningitis:** Meningitis cases detected are not clustered. Cases were managed properly; and investigation forms were filled for some cases but not all; it shows that most of the cases are viral meningitis not bacterial. Preventive therapy was provided as necessary for contacts of the probable bacterial meningitis cases.
- ❖ **BD:** cases are not clustered. All cases were managed properly.
- ❖ Other response measures were also taken with regard to case management of Leishmaniasis, Hepatitis, TB, TYF and BRU cases. In addition to ensuring the availability of medicines and the implementation of sanitation measures in accordance with available capacity.

Table-1: Distribution of cases per age group, and by Governorate-week-20, 2014

Code	Age group	Sweida	Hamah	Daraa	Aleppo	Damascus	DierEzor	Idleb	Homs	Lattakia	Rural Damascus	Tartous	Qunaitra	Raqua	Hassaka	Grand Total	
AD	< 5	107	127	145	445	420	373	53	57	110	95	68	14	120	64	2198	4035
	≥ 5	87	84	78	390	378	326	48	57	55	86	109	23	73	43	1837	
BD	< 5	3	0	2	0	2	11	0	0	5	0	1	0	0	12	36	67
	≥ 5	4	0	1	0	7	5	0	0	2	1	0	0	2	9	31	
AWD	< 5	0	0	0	0	0	0	2	0	0	0	0	0	0	0	2	3
	≥ 5	0	0	0	0	0	1	0	0	0	0	0	0	0	0	1	
AJS	< 5	9	15	7	11	24	21	27	27	10	10	0	0	20	2	183	443
	≥ 5	3	18	8	11	51	25	34	42	28	20	1	1	15	3	260	
ILI	< 5	142	104	107	97	312	348	60	34	223	104	179	83	35	2	1830	3690
	≥ 5	111	96	86	89	291	314	171	58	138	118	214	127	39	8	1860	
AFP	< 5	0	0	0	0	3	0	0	3	0	0	0	0	0	0	6	6
	≥ 5	0	0	0	0	0	0	0	0	0	0	0	0	0	0	0	
SM	< 5	0	2	2	0	6	32	8	0	4	3	1	0	8	1	67	132
	≥ 5	0	1	0	0	6	46	6	0	0	0	0	0	6	0	65	
SMN	< 5	1	3	0	0	2	0	0	0	0	0	0	0	8	0	14	33
	≥ 5	1	1	0	0	5	1	1	1	0	0	1	0	8	0	19	
SARI	< 5	6	8	0	0	35	0	1	0	0	4	0	0	1	0	55	120
	≥ 5	10	8	0	0	39	0	2	0	1	5	0	0	0	0	65	
Others	< 5	0	14	19	54	12	5	6	169	6	30	3	37	7	0	362	1485
	≥ 5	7	60	65	39	173	269	13	285	17	117	26	36	13	3	1123	
Total	< 5	268	273	282	607	816	790	157	290	358	247	252	134	199	81	4753	10014
Total	≥ 5	223	268	238	529	950	987	275	443	241	347	351	187	156	66	5261	
Total		491	541	520	1136	1766	1777	432	733	599	594	603	321	355	147	10014	