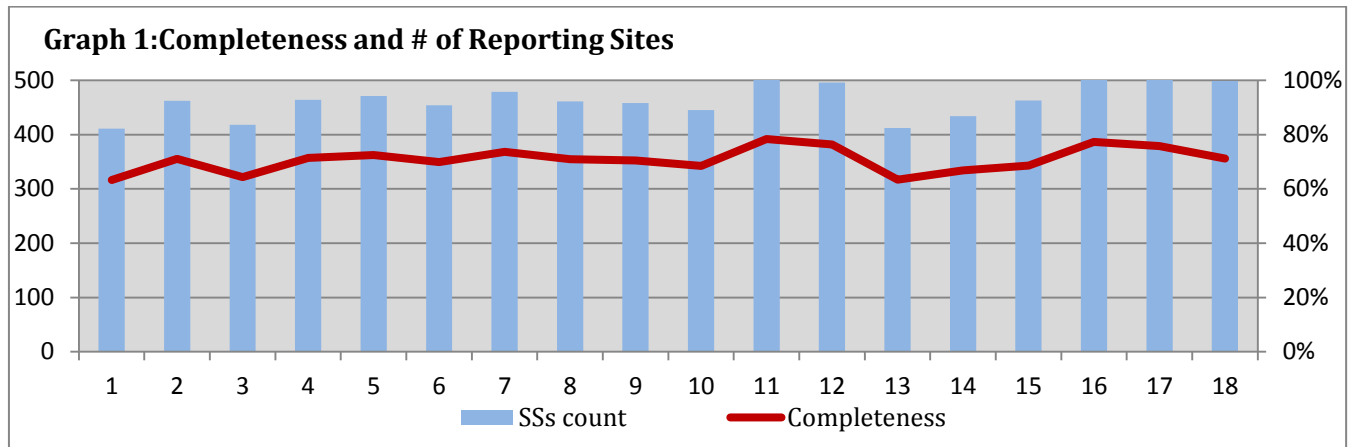


**Highlights:**

- ❖ 1 AWD case was detected in Rural Damascus.
- ❖ 1 AFP case was detected in Damascus.
- ❖ Slight decrease in number of AJS cases in general; Damascus continuous to record the highest number of cases this week.

**❖ Completeness& Timeliness of Reporting**

- ❖ The overall completeness of reporting was 71%; (499 out of total 701 EWARS sentinel sites). (See Graph 1). 14 governorates have reported this week.

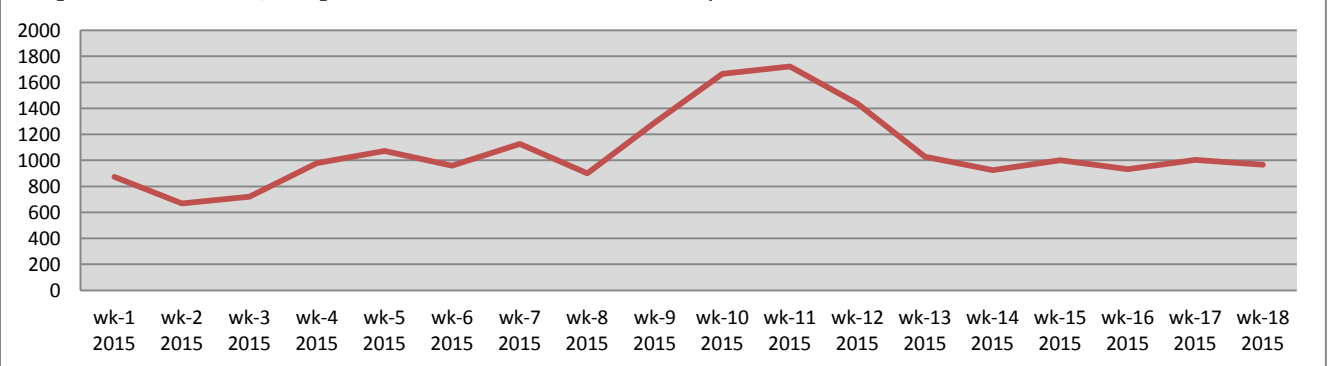


- ❖ Timeliness of reporting is 76%.

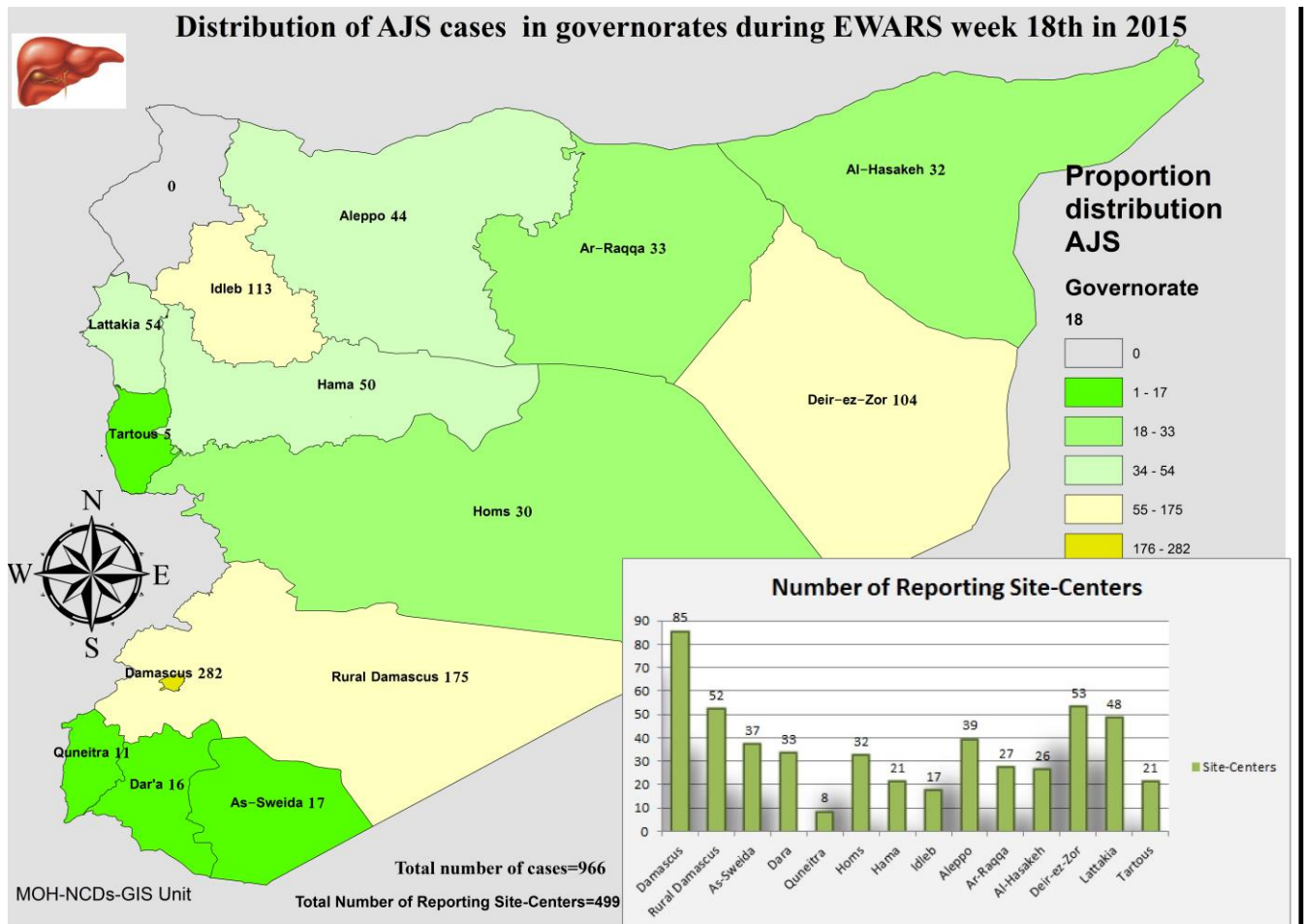
**❖ The Morbidity Cases**

- ❖ Out of the 188,773 total consultations, a total of 18,863 cases were reported; of which 10,378 cases were Influenza like Illness (55%), 4,416 cases were Acute Diarrhoea (23%), 966 cases of AJS, 151 cases of Sever Acute Respiratory Infection, 108 cases of Bloody Diarrhoea, 60 cases of Suspected Measles, 32 cases of Meningitis, 1 case of AWD, and 1 AFP case.
- ❖ Graph 2 displays the trend of the (19,272) AJS cases between wk1-wk18/2015. The distribution of the cases per governorates shows that Damascus, Rural Damascus, and Idleb have the highest number of cases for this week.

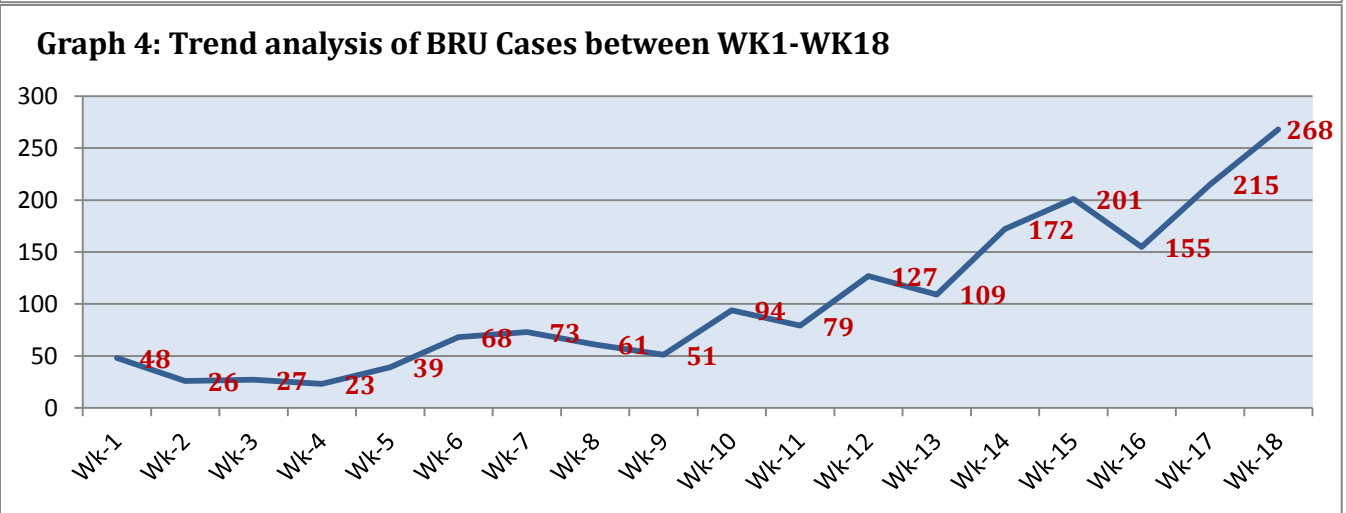
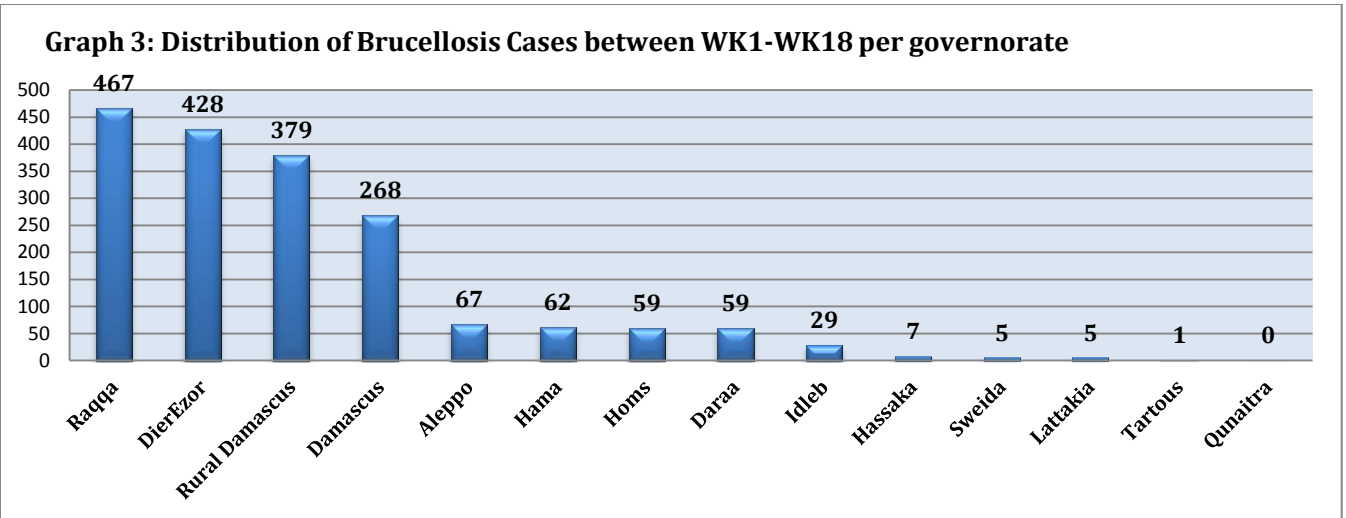
**Graph 2: Trend of AJS reported cases from WK1-WK18/2015:**



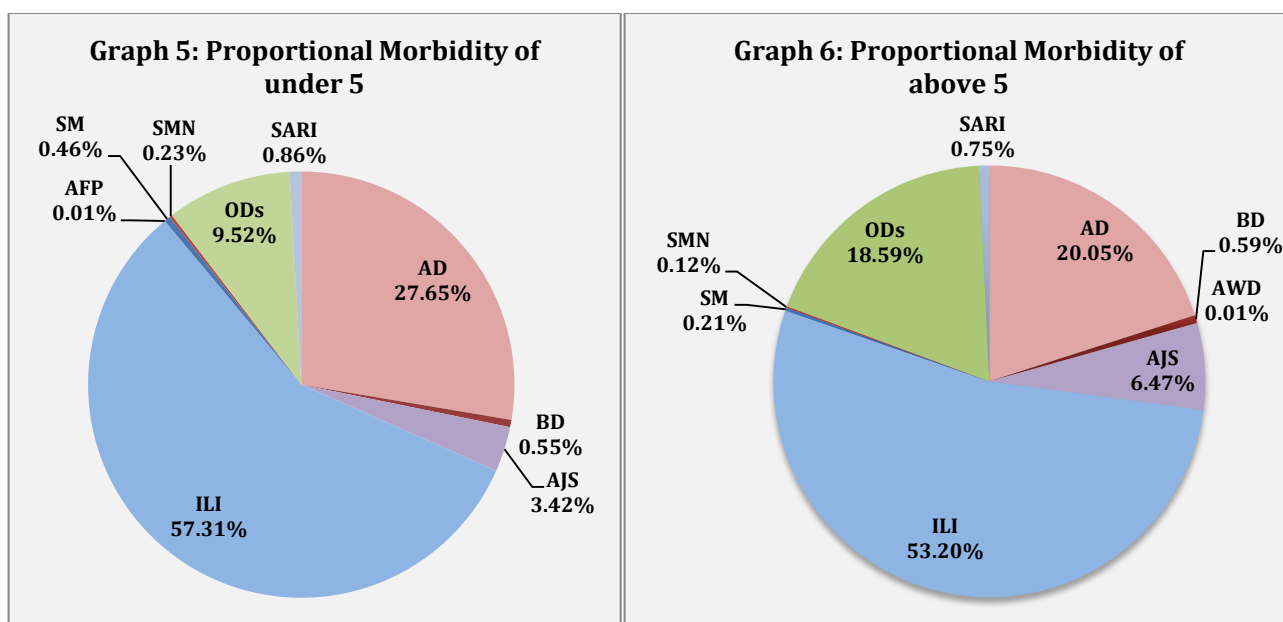
- ❖ Below map displays the distribution of AJS cases for week 18, per governorate.



- ❖ In total, 2,750 cases were reported as “other diseases”. The most important diseases reported within this group were: 451 cases of Leishmaniasis (most of which were reported from Hamah 36%, Idlib 22%, Rural Damascus 14%), 268 cases of Brucellosis (most of which were reported from Raqua 37%, Rural Damascus 22%, and DierEzor 13%), 152 cases of Typhoid (most of which were reported from DierEzor 43% and Rural Damascus 24%), 31 cases of TB, and 18 cases of Pertussis.
- ❖ Graph 3 and 4 below show the trend analysis of brucellosis cases reported from all governorates and the distribution of cases per governorate respectively. It shows that Raqqa, DierEzor and Rural Damascus, have the highest number of cases.



- ❖ ILI constitutes (57.31%) of the cases among <5 and (53.20%) among ≥ 5, while AD cases constitutes (27.65%) among <5 and (20.05%) among ≥ 5.
- ❖ Graphs 5 and 6 below show the proportional morbidity among < 5 and ≥ 5 year age groups respectively.



- ❖ 51% of cases were distributed among males and 56 % of the total reported cases were among  $\geq 5$  age group.

### ❖ The Response

**AFP:** Stool samples were collected from the AFP cases and sent to the reference lab in Damascus.

The national vaccination campaign will be implemented between 31<sup>st</sup> of May and 5<sup>th</sup> of June.

**AJS and water and food borne diseases:** The campaign for the prevention of food and water borne diseases is still ongoing.

**SM:** Blood samples have been collected from some cases with investigation forms completed. Measles and MMR vaccination campaigns were conducted between 19<sup>th</sup> and 30<sup>th</sup> of April. 1.5 million Child has been vaccinated in all governorates except in AlRaqqa due to ISIS refusal to implement the vaccination campaign.

**BRU:** Two training courses on proper Brucellosis case management will be conducted in May, besides; medicines are available in all treatment centres in all governorates. Additional quantities have been procured by WHO to be distributed to the affected hard to reach areas. Furthermore, health education sessions are being conducted to ensure food safety at health facilities level.

**Table-1: Distribution of cases per age group, and by Governorate-week-18, 2015:**

Code	age group	Idleb	Hassaka	Raqqa	Sweida	Qunaitra	Lattakia	Aleppo	Hama	Homs	Daraa	Damascus	DierEzor	Rural Damascus	Tartous	Grand Total	
AD	< 5	135	218	52	103	44	144	129	150	30	175	275	541	265	46	2307	4416
	≥ 5	116	50	46	122	56	131	111	81	19	140	420	536	196	85	2109	
BD	< 5	0	21	0	2	1	5	0	0	0	5	4	6	2	0	46	108
	≥ 5	0	8	0	3	8	0	0	1	0	7	3	31	1	0	62	
AWD	< 5	0	0	0	0	0	0	0	0	0	0	0	0	0	0	0	1
	≥ 5	0	0	0	0	0	0	0	0	0	0	0	0	1	0	1	
AJS	< 5	64	11	12	4	2	14	21	13	16	7	44	51	26	0	285	966
	≥ 5	49	21	21	13	9	40	23	37	14	9	238	53	149	5	681	
ILI	< 5	187	159	32	274	24	1027	629	127	15	211	447	894	320	436	4782	10378
	≥ 5	168	101	10	533	43	836	592	127	17	256	534	975	581	823	5596	
AFP	< 5	0	0	0	0	0	0	0	0	0	0	1	0	0	0	1	1
	≥ 5	0	0	0	0	0	0	0	0	0	0	0	0	0	0	0	
SM	< 5	12	3	7	0	0	5	0	0	1	0	6	3	0	1	38	60
	≥ 5	9	0	3	0	0	2	0	1	0	0	2	3	2	0	22	
SMN	< 5	5	0	5	0	0	1	0	0	0	0	7	1	0	0	19	32
	≥ 5	3	0	3	0	0	0	0	4	0	0	3	0	0	0	13	
SARI	< 5	0	12	0	5	0	0	0	16	0	0	16	23	0	0	72	151
	≥ 5	1	4	0	12	0	0	0	14	0	0	43	5	0	0	79	
Others	< 5	33	10	68	1	68	13	262	41	2	25	65	90	113	3	794	2750
	≥ 5	190	2	104	20	82	76	331	242	3	109	286	175	325	11	1956	
<b>Total Sum of &lt; 5</b>		436	434	176	389	139	1209	1041	347	64	423	865	1609	726	486	8344	18863
<b>Total Sum of ≥ 5</b>		536	186	187	703	198	1085	1057	507	53	521	1529	1778	1255	924	10519	
<b>Total</b>		<b>972</b>	<b>620</b>	<b>363</b>	<b>1092</b>	<b>337</b>	<b>2294</b>	<b>2098</b>	<b>854</b>	<b>117</b>	<b>944</b>	<b>2394</b>	<b>3387</b>	<b>1981</b>	<b>1410</b>	<b>18863</b>	