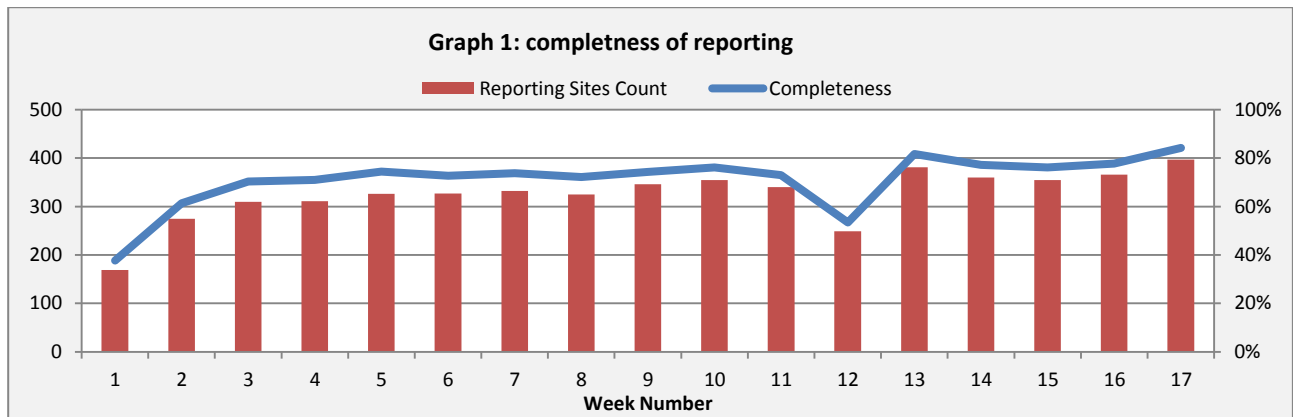


Highlights:

- ❖ 1 AFP case was detected in Hamah.
- ❖ 2 deaths reported due to measles cases in Idleb

❖ Completeness & Timeliness of Reporting

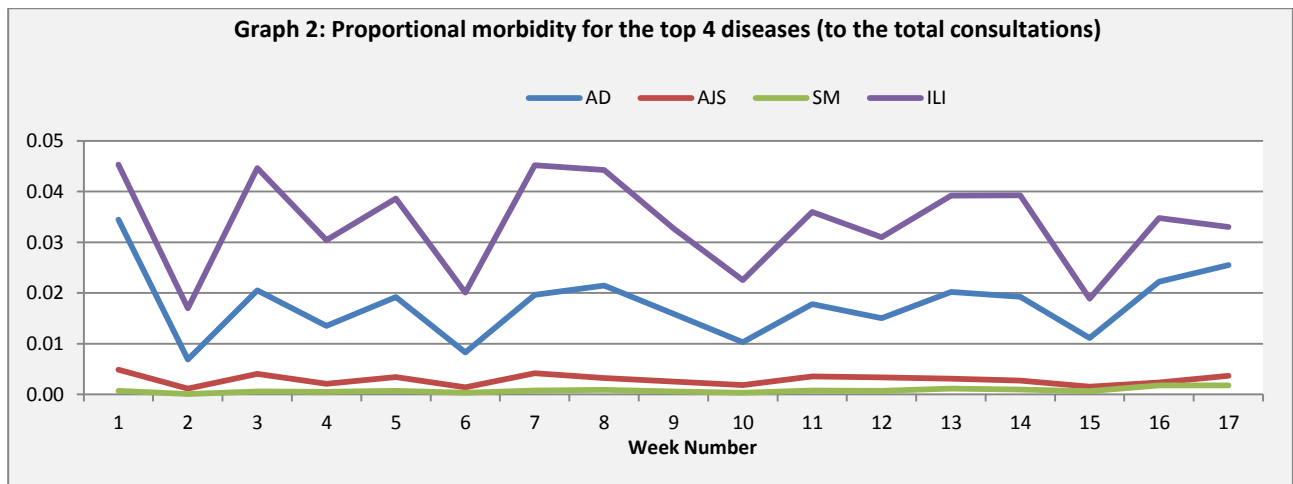
The overall completeness of reporting was 84%; (397 out of total 471 EWARS sentinel sites). (See Graph 1). 14 governorates have reported this week.



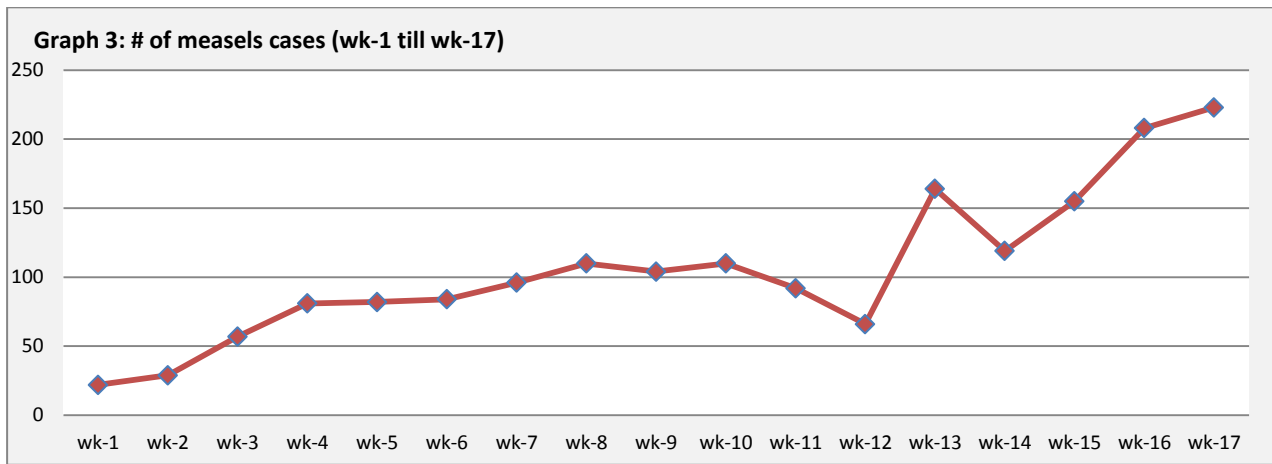
- ❖ Timeliness of reporting is 75%.

❖ The Morbidity Cases

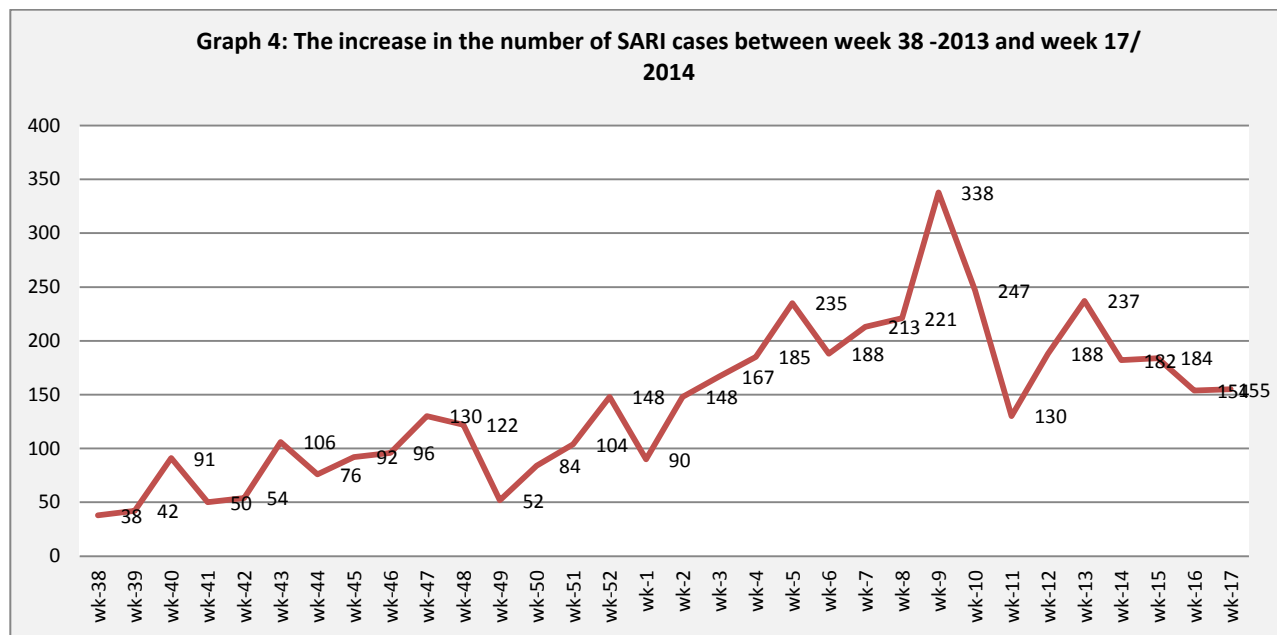
Out of the 124,474 total consultations, a total of 10,402 cases were reported; of which 4,332 cases were Influenza like Illness (42%) and 3,381 cases were Acute Diarrhoea (33%), 507 cases of AJS, 223 cases of Suspected Measles, 155 cases of Severe Acute Respiratory Infection, 50 cases of Bloody Diarrhoea, 30 cases of Meningitis, 1 AWD case, and 1 AFP case. (Graph 2 shows the proportional morbidity for the top 4 diseases (to the total consultations, after excluding the data of 40 health facilities that did not report total consultations)).



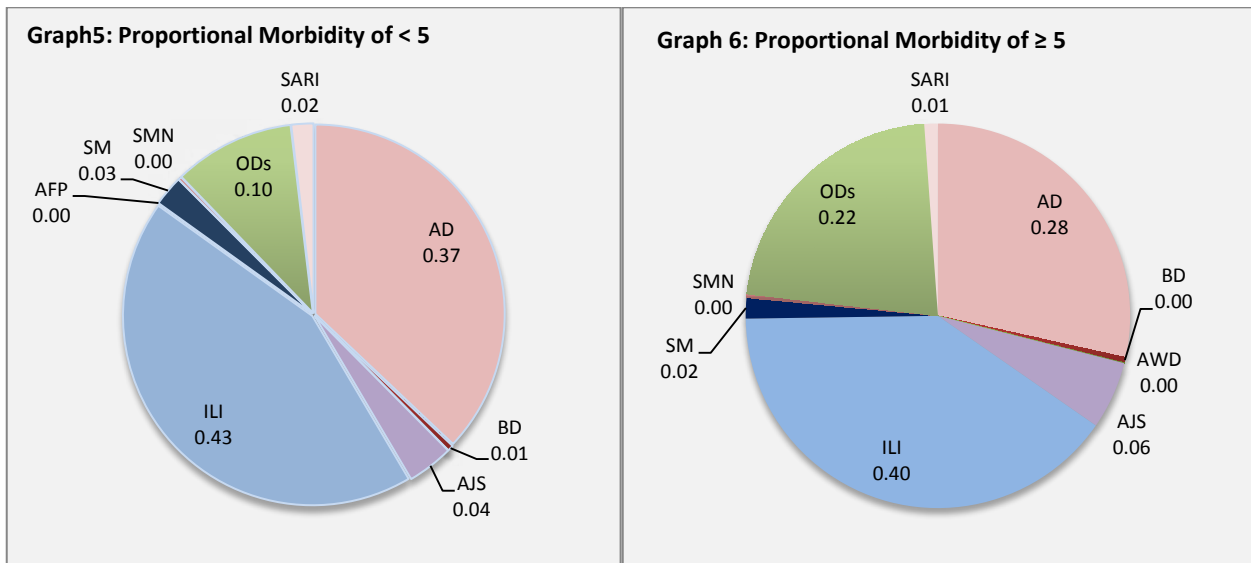
- ❖ A notable increase in the number of suspected measles cases has been reported also this week with DierEzor governorate reporting the highest number of cases (See graph 3 below)



❖ The graph 4 below illustrates the trend of the decrease in SARI cases over the previous 16 weeks



- ❖ In total, 1722 cases were reported as “other diseases”. The most important diseases reported within this group were:167cases of Leishmaniasis (most of which were reported from Hamah 52%) 96 cases of Brucellosis(most of which were reported from Damascus 34%), 42 cases of Typhoid(most of which were reported from DierEzor 55%), and 9 cases of TB.
- ❖ 53%of the cases were distributed among ≥ 5 age group.
- ❖ The most common cases among < 5 were ILI (43%) and AD cases (37%). Graphs 5 and 6 below show the proportional morbidity among < 5 and ≥ 5 year age groups respectively.
- ❖ 51% of the cases were reported among males.



❖ The Response

- ❖ **AFP:** Stool samples were collected from the AFP case and sent to the reference lab in Damascus. The vaccination campaign was implemented between 6 and 10 of April.
- ❖ **AWD:** The case reported was revealed to be acute diarrhoea
- ❖ **Measles:** Samples have been collected from some cases with investigation forms completed. MMR vaccines, among other vaccines, will be provided for the drop-out under 5 children during the coming national vaccination week (26 -30 April) in line with the global/regional vaccination week
- ❖ **Meningitis:** Meningitis cases detected are not clustered. Cases were managed properly; and investigation forms were filled for some cases but not all; it shows that most of the cases are viral meningitis not bacterial. Preventive therapy was provided as necessary for contacts of the probable bacterial meningitis cases.
- ❖ **BD:** cases are not clustered. All cases were managed properly.
- ❖ Other response measures were also taken with regard to case management of Leishmaniasis, Hepatitis, TB, TYF and BRU cases. In addition to ensuring the availability of medicines and the implementation of sanitation measures in accordance with available capacity.

Table-1: Distribution of cases per age group, and by Governorate-week-17, 2014

Code	Age group	Sweida	Hamah	Daraa	Aleppo	Damascus	DierEzor	Idleb	Homs	Lattakia	Rural Damascus	Tartous	Qunaitra	Raqua	Hassaka	Grand Total	
AD	<5	112	100	102	278	290	262	38	38	73	113	82	26	108	185	1807	3381
	≥5	67	89	53	284	256	258	54	59	53	139	97	19	39	107	1574	
BD	<5	4	0	2	0	3	6	0	1	2	0	0	0	0	7	25	50
	≥5	1	0	0	0	4	1	0	10	0	0	1	0	0	8	25	
AWD	<5	0	0	0	0	0	0	0	0	0	0	0	0	0	0	0	1
	≥5	0	0	0	0	0	0	0	0	0	1	0	0	0	0	1	
AJS	<5	3	7	9	9	39	24	28	23	19	13	1	1	15	1	192	507
	≥5	12	31	20	14	46	17	51	41	17	52	0	0	9	5	315	
ILI	<5	149	115	161	193	312	286	46	38	100	171	173	172	38	162	2116	4332
	≥5	101	108	110	226	319	276	264	47	99	213	174	143	17	119	2216	
AFP	<5	0	1	0	0	0	0	0	0	0	0	0	0	0	0	1	1
	≥5	0	0	0	0	0	0	0	0	0	0	0	0	0	0	0	
SM	<5	2	4	0	2	10	38	7	0	2	1	0	1	46	14	127	223
	≥5	0	0	2	2	2	48	5	2	3	1	0	0	29	2	96	
SMN	<5	2	2	1	0	2	0	1	0	0	0	0	0	4	1	13	30
	≥5	0	3	1	1	3	0	0	0	0	0	1	0	4	4	17	
SARI	<5	2	55	0	0	27	0	3	2	2	0	0	0	0	1	92	155
	≥5	8	3	0	0	34	0	1	4	5	0	1	0	0	7	63	
Others	<5	0	24	19	67	25	6	8	135	0	179	2	35	3	1	504	1722
	≥5	29	109	53	109	164	100	11	292	0	284	5	57	3	2	1218	
Total <5		274	308	294	549	708	622	131	237	198	477	258	235	214	372	4877	10402
Total ≥5		218	343	239	636	828	700	386	455	177	690	279	219	101	254	5525	
Total		492	651	533	1185	1536	1322	517	692	375	1167	537	454	315	626	10402	