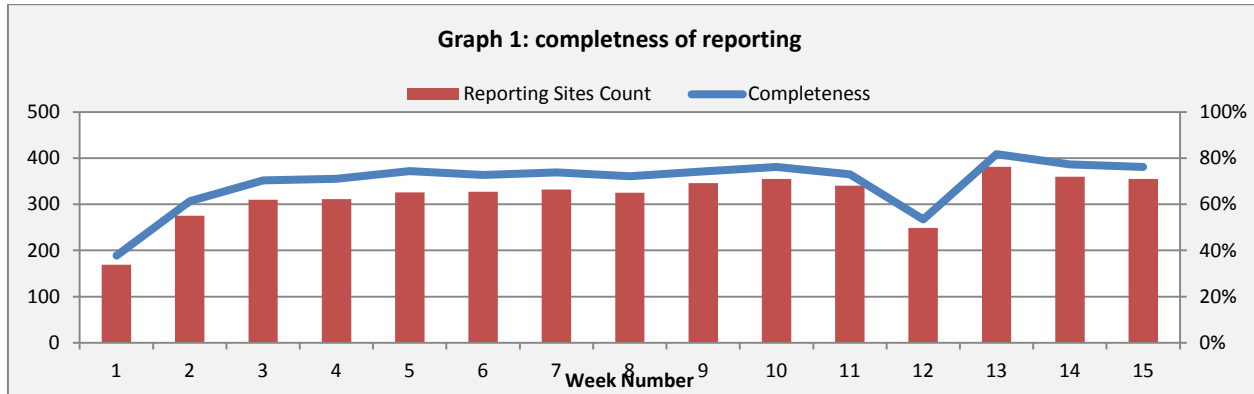


Highlights:

- ❖ 3 AFP cases were detected in Tartous, Hamah and Raqa .
- ❖ 1 AWD case was detected in Damascus.

❖ Completeness& Timeliness of Reporting

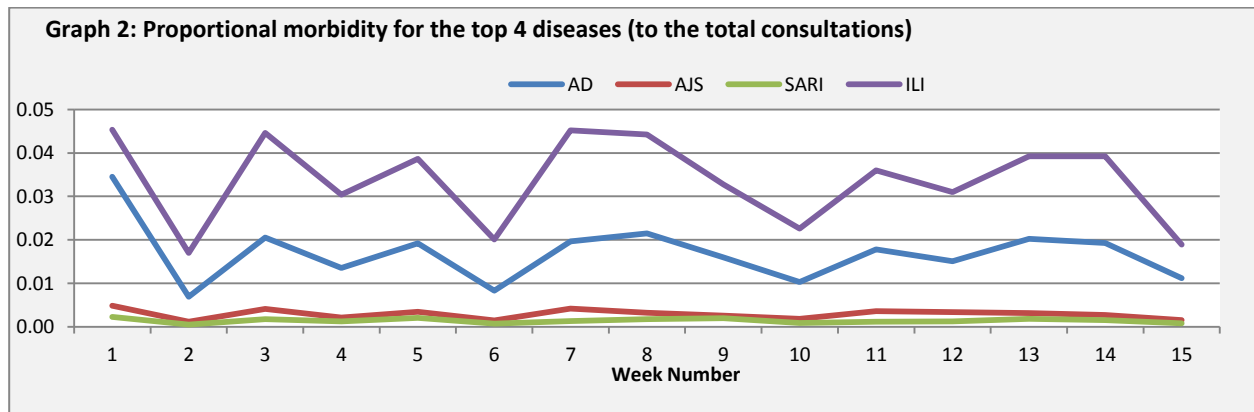
The overall completeness of reporting was 76%; (355 out of total 466 EWARS sentinel sites). (See Graph 1). 14 governorates have reported this week.



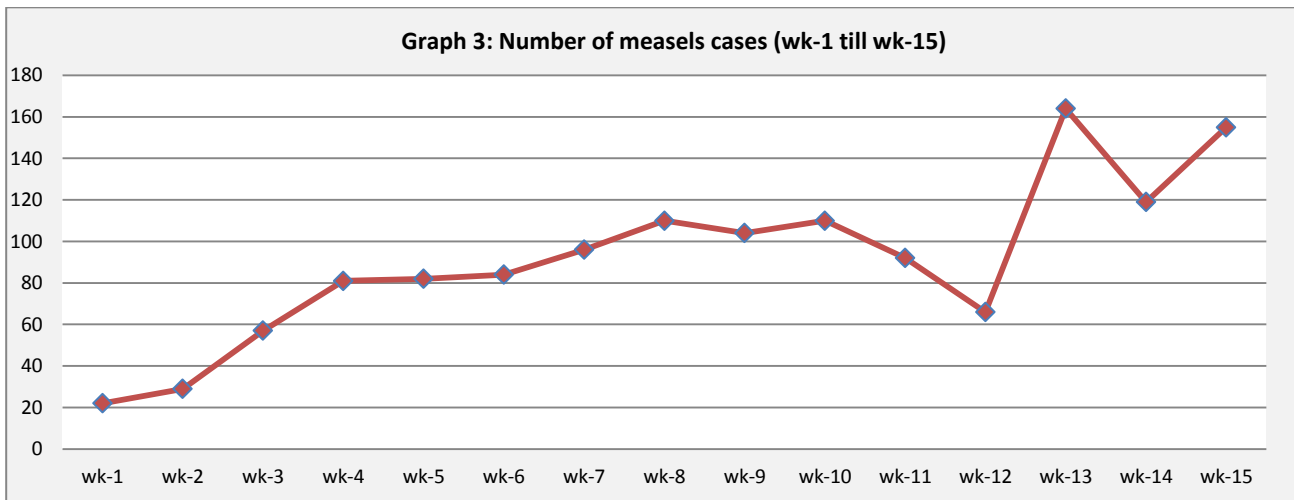
- ❖ Timeliness of reporting is 92%.

❖ The Morbidity Cases

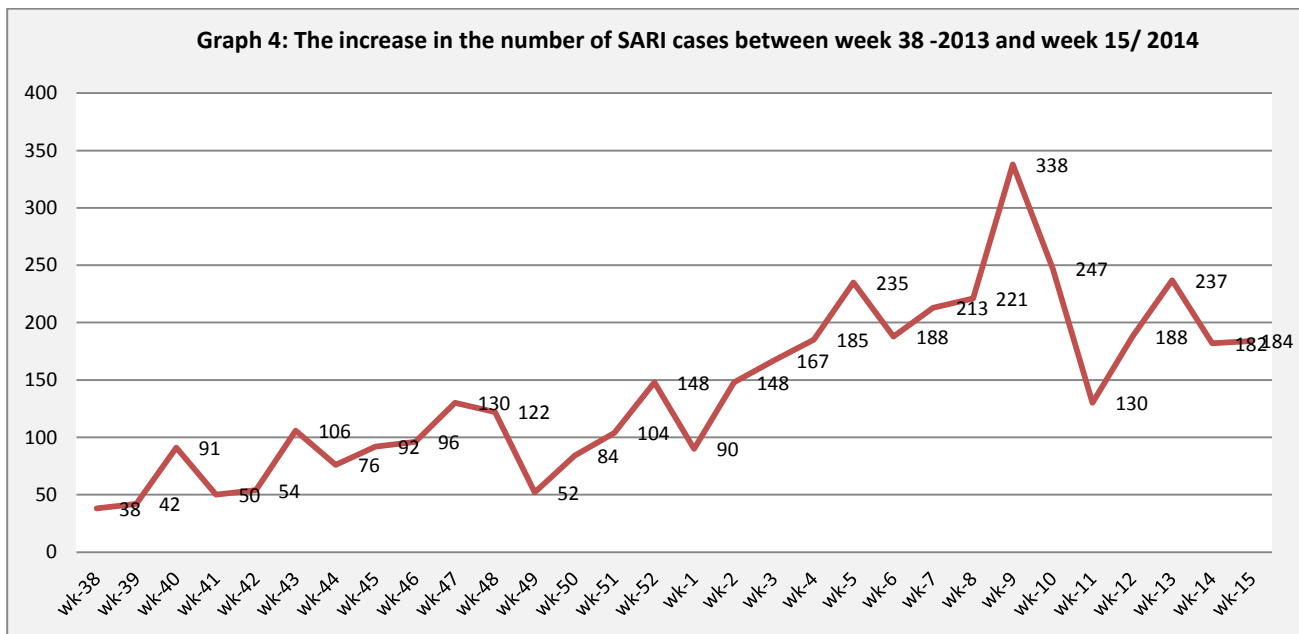
Out of the 228,880 total consultations, a total of 9,865 cases were reported; of which 4,719 cases were Influenza like Illness (48%) and 2,992 cases were Acute Diarrhoea (30%), 395 cases of AJS, 184 cases of Sever Acute Respiratory Infection, 155 cases of Suspected Measles, 31 cases of Meningitis, 30 cases of Bloody Diarrhoea, 3cases of AFP and 1 AWD case. (Graph 2 shows the proportional morbidity for the top 4 diseases (to the total consultations, after excluding the data of **53 health facilities** that did not report total consultations).



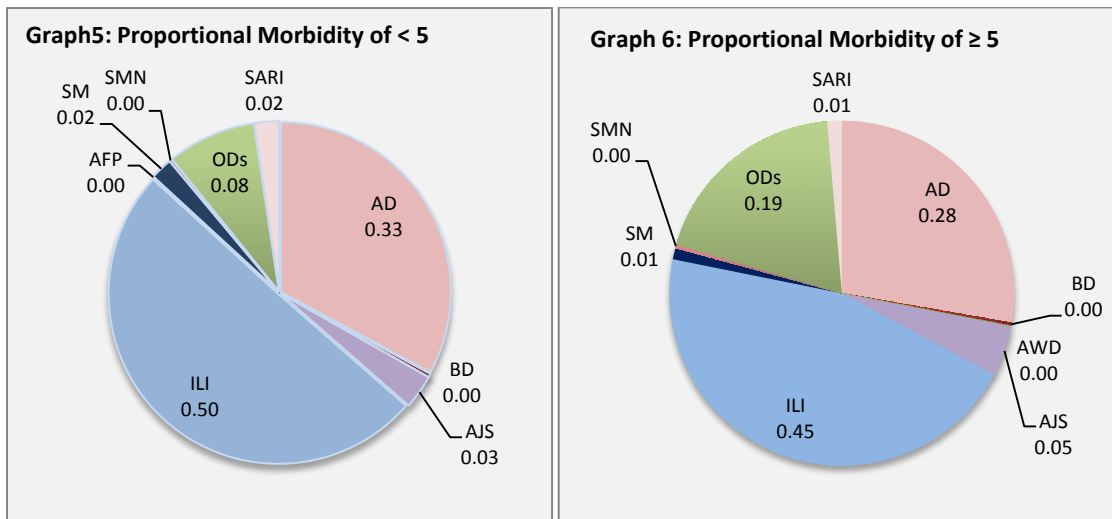
- ❖ The increase in the number of suspected measles cases continue to be reported through this week (See graph 3 below)



❖ The graph 4 below illustrate the trend of the SARI cases over the previous 15 weeks



- ❖ In total, 1355 cases were reported as “other diseases”. The most important diseases reported within this group were: 183 cases of Leishmaniasis (most of which were reported from Hamah 44%) 80 cases of Brucellosis (most of which were reported from Damascus 30%), 36 cases of Typhoid and 10 cases of TB.
- ❖ The cases were distributed equally among < 5 and ≥ 5 age groups.
- ❖ The most common cases among < 5 were ILI (50%) and AD cases (33%). Graphs 5 and 6 below show the proportional morbidity among < 5 and ≥ 5 year age groups respectively.
- ❖ 51% of the cases were reported among males.



❖ The Response

- ❖ **AFP:** Stool samples were collected from the AFP cases and sent to the reference lab in Damascus. The vaccination campaign was implemented between 6 and 10 of April
- ❖ **AWD:** Sample has been collected and the cholera was discarded
- ❖ **Measles:** Samples have been collected from some cases with investigation forms completed. MMR vaccines, among other vaccines, will be provided for the drop-out under 5 children during the coming national vaccination week (26 -30 April) in line with the global/regional vaccination week
- ❖ **Meningitis:** Meningitis cases detected are not clustered. Cases were managed properly; and investigation forms were filled for some cases but not all; it shows that most of the cases are viral meningitis not bacterial. Preventive therapy was provided as necessary for contacts of the probable bacterial meningitis cases.
- ❖ **BD:** cases are not clustered. All cases were managed properly.
- ❖ Other response measures were also taken with regard to case management of Leishmaniasis, Hepatitis, TB, TYF and BRU cases. In addition to ensuring the availability of medicines and the implementation of sanitation measures in accordance with available capacity.

Table-1: Distribution of cases per age group, and by Governorate-week-15, 2014

Code	Age group	Sweida	Hamah	Daraa	Aleppo	Damascus	DierEzor	Idleb	Homs	Lattakia	Rural Damascus	Tartous	Qunaitra	Raqua	Hassakah	Grand Total	
AD	< 5	89	159	91	239	339	251	72	103	59	75	74	28	45	4	1628	2992
	≥ 5	51	101	33	229	282	199	84	116	44	75	80	26	30	14	1364	
BD	< 5	1	0	0	0	3	8	0	0	3	0	1	0	0	1	17	30
	≥ 5	2	0	0	1	3	1	0	0	2	0	1	0	0	3	13	
AWD	< 5	0	0	0	0	0	0	0	0	0	0	0	0	0	0	0	1
	≥ 5	0	0	0	0	1	0	0	0	0	0	0	0	0	0	1	
AJS	< 5	1	11	14	9	14	12	51	5	11	16	5	1	10	1	161	395
	≥ 5	2	22	17	23	49	7	54	3	12	29	5	4	7	0	234	
ILI	< 5	218	139	111	352	328	253	114	68	117	239	269	227	12	42	2489	4719
	≥ 5	171	124	105	300	280	209	95	58	76	157	251	349	13	42	2230	
AFP	< 5	0	1	0	0	0	0	0	0	0	0	1	0	1	0	3	3
	≥ 5	0	0	0	0	0	0	0	0	0	0	0	0	0	0	0	
SM	< 5	3	7	7	2	9	40	3	1	1	0	0	0	30	0	103	155
	≥ 5	0	2	3	2	0	19	3	0	1	0	0	0	21	1	52	
SMN	< 5	1	3	0	2	2	0	0	0	1	0	0	0	4	0	13	31
	≥ 5	0	5	0	4	4	1	1	0	0	0	0	0	3	0	18	
SARI	< 5	7	52	0	0	46	0	3	0	1	0	0	0	2	6	117	184
	≥ 5	8	12	0	0	35	1	9	0	1	0	0	0	0	1	67	
Others	< 5	0	22	18	142	35	19	3	3	0	125	2	43	7	0	419	1355
	≥ 5	13	110	35	182	128	57	31	35	0	222	21	90	8	4	936	
Total < 5		320	394	241	746	776	583	246	180	193	455	352	299	111	54	4950	9865
Total ≥ 5		247	376	193	741	782	494	277	212	136	483	358	469	82	65	4915	
Total		567	770	434	1487	1558	1077	523	392	329	938	710	768	193	119	9865	