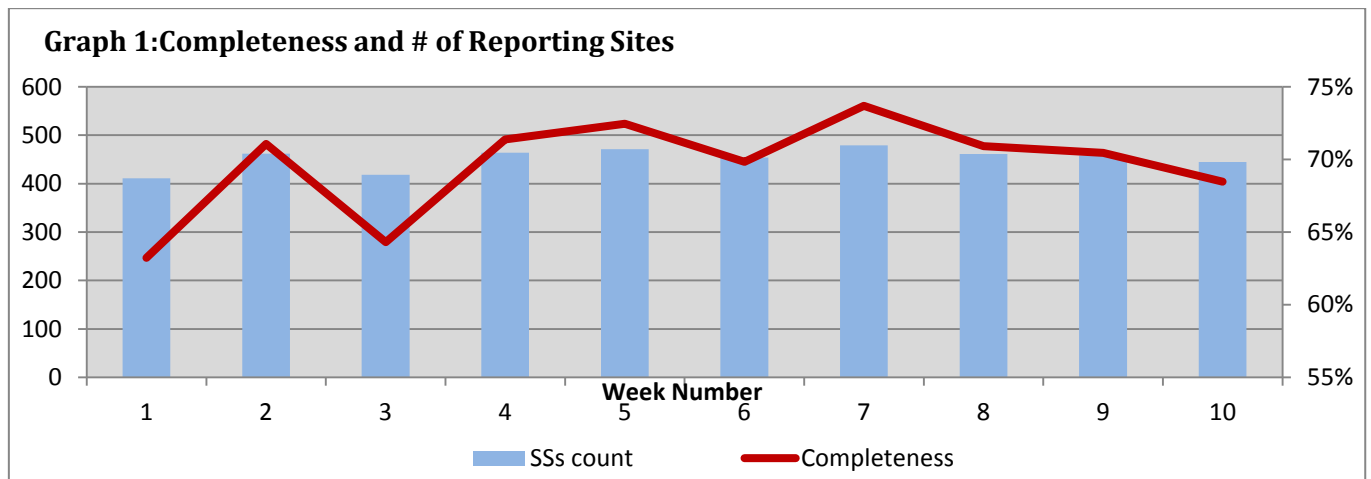


Highlights:

- ❖ 6 AFP cases were detected in Damascus (3), Hamah (2), and Raqua (1).
- ❖ Further increase in number of AJS cases was noticed this week
- ❖ A slight decrease in number of SARI cases reported this week.

❖ Completeness & Timeliness of Reporting

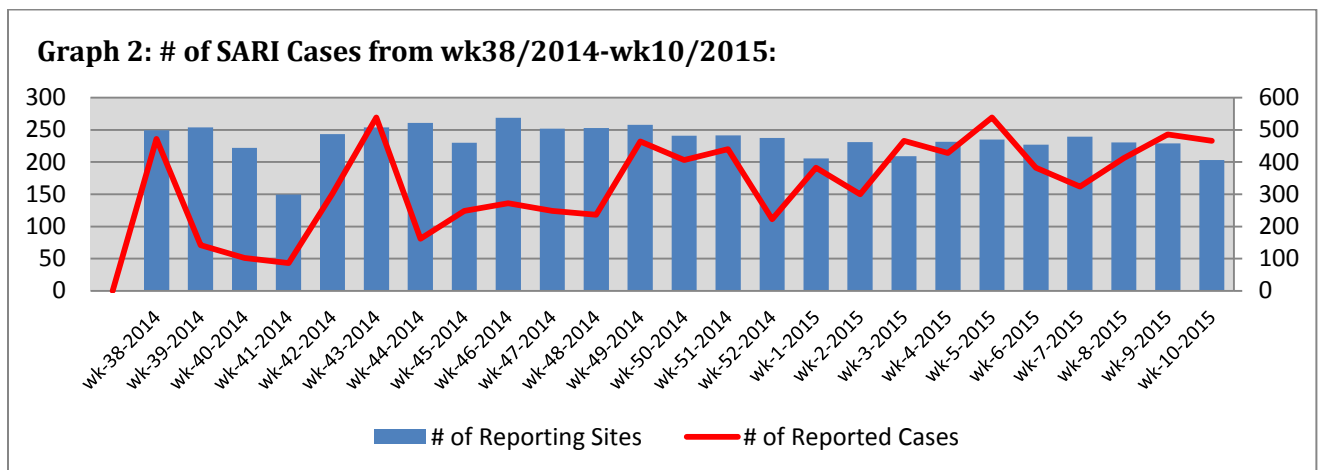
- ❖ The overall completeness of reporting was 68%; (445 out of total 650 EWARS sentinel sites). (See Graph 1). 14 governorates have reported this week.



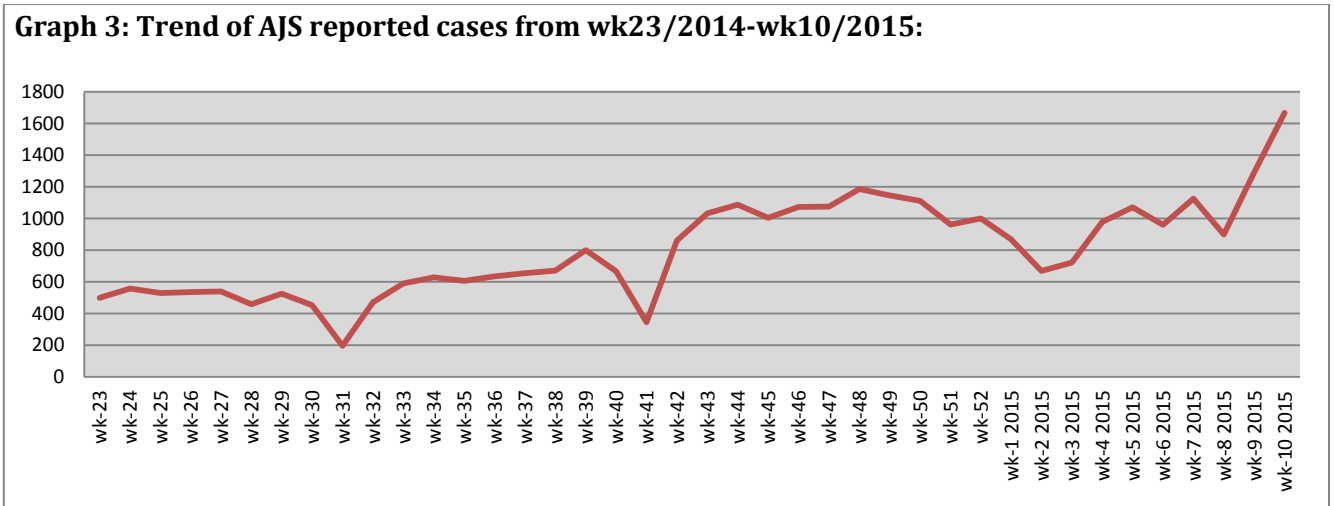
- ❖ Timeliness of reporting is 83%.

❖ The Morbidity Cases

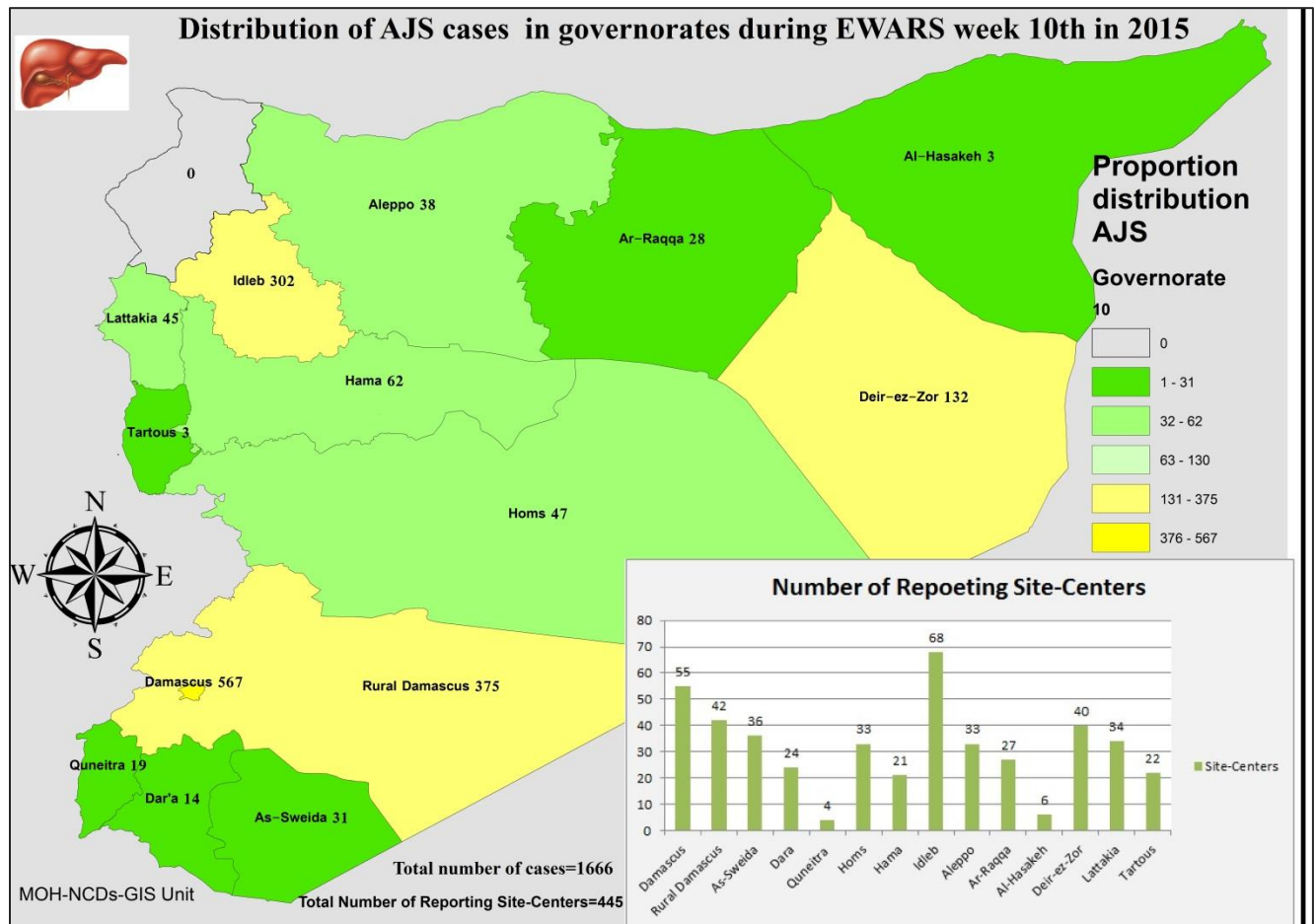
- ❖ Out of the 153,283 total consultations, a total of 17,766 cases were reported; of which 9,888 cases were Influenza like Illness (56%), 3,509 cases were Acute Diarrhoea (20%), 1,666 cases of AJS, 233 cases of Sever Acute Respiratory Infection, 62 cases of Bloody Diarrhoea, 32 cases of Suspected Measles, 18 cases of Meningitis, and 6 AFP cases.
- ❖ Below chart reflects the trend in the number of SARI cases in 2014 and 2015 in the period between week 38 - 2014 and week 10-2015.



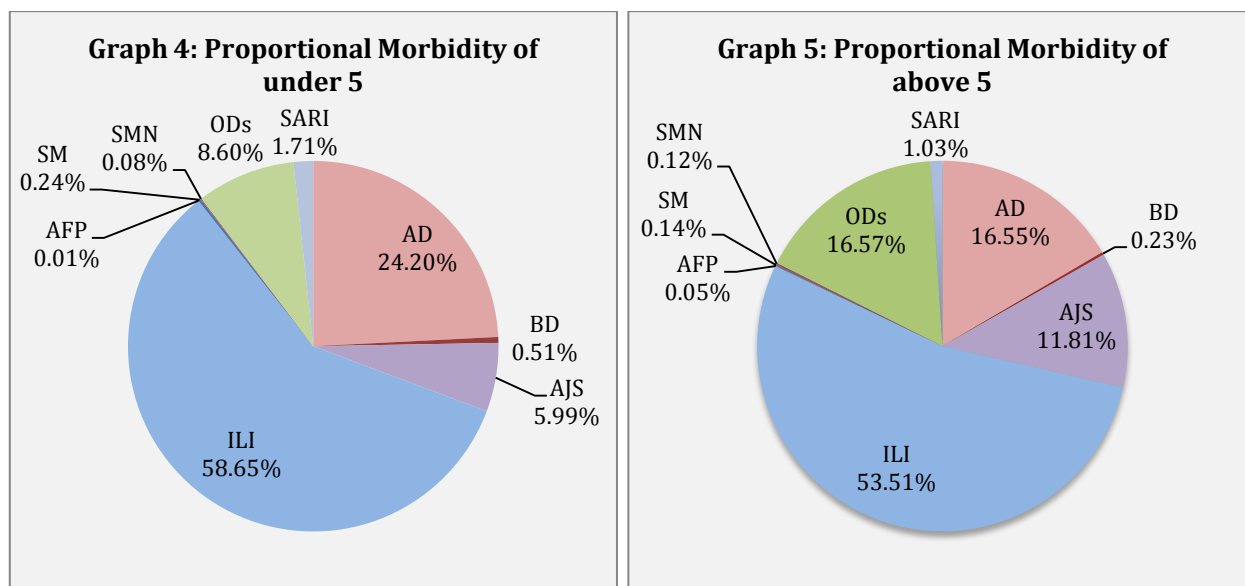
❖ Graph 3 displays the trend of the (32,158) AJS cases between wk23/2014-wk10/2015. The distribution of the cases per governorates shows that Idleb ,Damascus, Deir Ezore and Rural Damascus, have the highest number of cases for this week. Further increase in the number of cases was noticed for this week.



❖ Below map display the distribution of AJS cases for week 10 , per governorate:



- ❖ In total, 2,352 cases were reported as “other diseases”. The most important diseases reported within this group were: 457 cases of Leishmaniasis (most of which were reported from Hamah 29%, Rural Damascus 24%, and Idleb 24%), 149 cases of Typhoid (most of which were reported from Deir Ezore 50% Rural Damascus 26%, and Idleb 10%), 94 cases of Brucellosis (most of which were reported from Deir Ezore 53%, Damascus 22% and Rural Damascus 15%), 28 cases of TB, and 37 cases of Pertussis.
- ❖ 59% of the cases were distributed among ≥ 5 age group.
- ❖ ILI consists (58.65%) of the cases among <5 and (53.51%) among ≥ 5 , while AD cases consists (24.20%) among <5 and (16.55%) among ≥ 5 .
- ❖ Graphs 4 and 5 below show the proportional morbidity among < 5 and ≥ 5 year age groups respectively.



- ❖ Cases were distributed equally among males and females.

❖ The Response

AFP: Stool samples were collected from the AFP case and sent to the reference lab in Damascus. The last national vaccination campaign was implemented between 15th and 19th February.

AJS and water and food borne diseases: An awareness campaign about food and water borne diseases was continued in public health centres, the IDPs shelters, schools, and through media (TV programmes, radio programmes, newspapers ...). Line list of cases started to be collected from different health facilities in the most affected governorates to provide evidence needed on the issue of vaccine procurement. A brochure for raising the awareness on the prevention of hepatitis A has been developed. 100,000 copies will be printed to be distributed among IDPs and school children.

Meningitis: Meningitis cases detected are not clustered. Cases were managed properly; and investigation forms were filled for some cases but not all; it shows that most of the cases are viral meningitis not bacterial. Preventive therapy was provided as necessary for contacts of the probable bacterial meningitis cases.

Table-1: Distribution of cases per age group, and by Governorate-week-10, 2015:

Code	age group	Idleb	Hassaka	Raqua	Sweida	Qunaitra	Lattakia	Aleppo	Hamah	Homs	Daraa	Damascus	DierEzor	Rural Damascus	Tartous	Grand Total
AD	< 5	179	87	46	73	61	99	91	80	60	108	257	328	291	38	1798
	≥ 5	181	59	11	101	80	80	87	72	47	92	320	277	248	56	1711
BD	< 5	0	1	1	6	3	7	0	1	0	6	2	8	3	0	38
	≥ 5	0	0	1	2	9	1	0	0	0	3	2	4	1	1	24
AWD	< 5	0	0	0	0	0	0	0	0	0	0	0	0	0	0	0
	≥ 5	0	0	0	0	0	0	0	0	0	0	0	0	0	0	0
AJS	< 5	125	1	17	13	9	21	15	16	33	4	72	59	60	0	445
	≥ 5	177	2	11	18	10	24	23	46	14	10	495	73	315	3	1221
ILI	< 5	381	37	19	348	13	507	693	202	25	111	583	672	408	358	4357
	≥ 5	759	23	15	465	14	388	682	238	19	144	1013	689	519	563	5531
AFP	< 5	0	0	1	0	0	0	0	0	0	0	0	0	0	0	1
	≥ 5	0	0	0	0	0	0	0	2	0	0	3	0	0	0	5
SM	< 5	8	0	3	0	0	3	0	0	0	0	1	2	1	0	18
	≥ 5	9	0	2	0	0	0	0	0	0	0	2	1	0	0	14
SMN	< 5	2	0	2	0	0	0	0	1	0	0	1	0	0	0	6
	≥ 5	1	1	2	0	0	0	1	2	0	0	5	0	0	0	12
SARI	< 5	8	45	0	7	0	0	0	27	0	0	33	7	0	0	127
	≥ 5	7	16	0	11	0	0	0	7	0	0	64	1	0	0	106
Others	< 5	45	0	7	0	72	8	197	22	1	26	45	51	154	11	639
	≥ 5	224	0	5	9	88	88	295	170	12	80	166	177	380	19	1713
Total Sum of < 5		748	171	96	447	158	645	996	349	119	255	994	1127	917	407	7429
Total Sum of ≥ 5		1358	101	47	606	201	581	1088	537	92	329	2070	1222	1463	642	10337
Total		2106	272	143	1053	359	1226	2084	886	211	584	3064	2349	2380	1049	17766