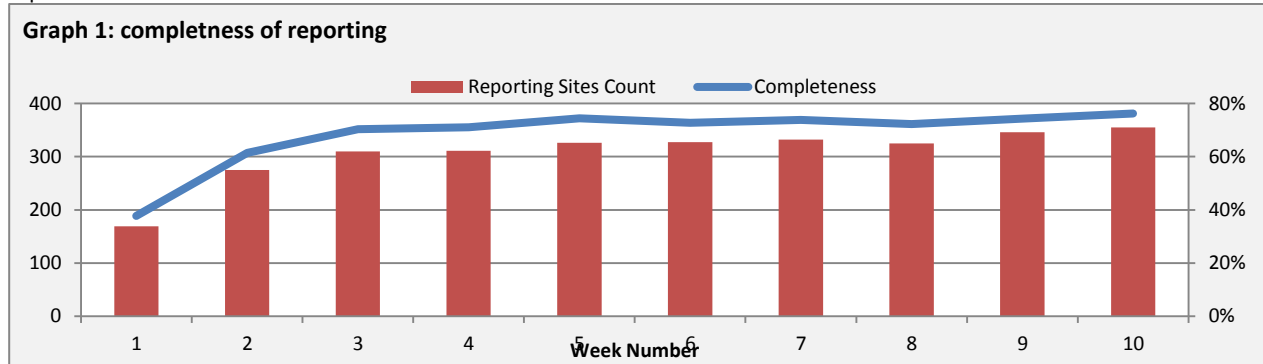


Highlights:

- ❖ 3 AWD cases were detected in Damascus, Idleb and Hassaka.
- ❖ 2 AFP case were detected in Hamah and Daraa.
- ❖ The increase in SARI cases continues for this week and A(H1N1) has been detected

I. Completeness & Timeliness of Reporting

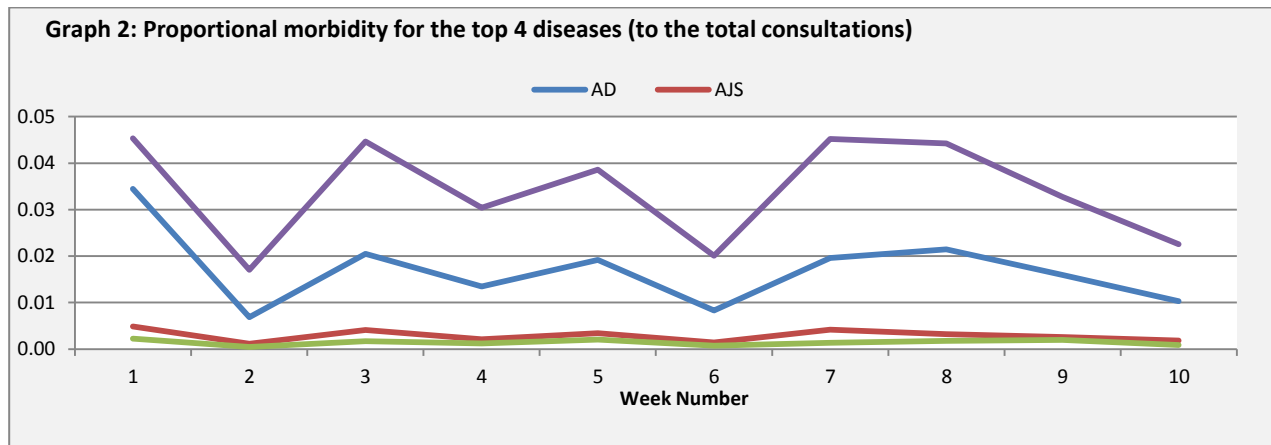
The overall completeness of reporting was 76%; (355 out of total 466 EWARS sentinel sites) (see Graph 1). 13 governorates have reported this week.



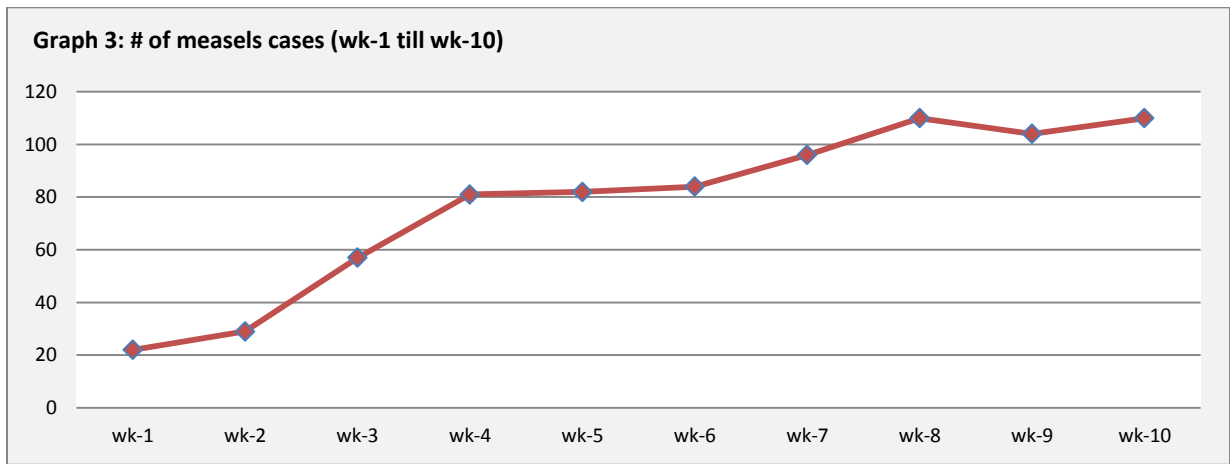
- ❖ Timeliness of reporting is 92 %.

III. The Morbidity Cases

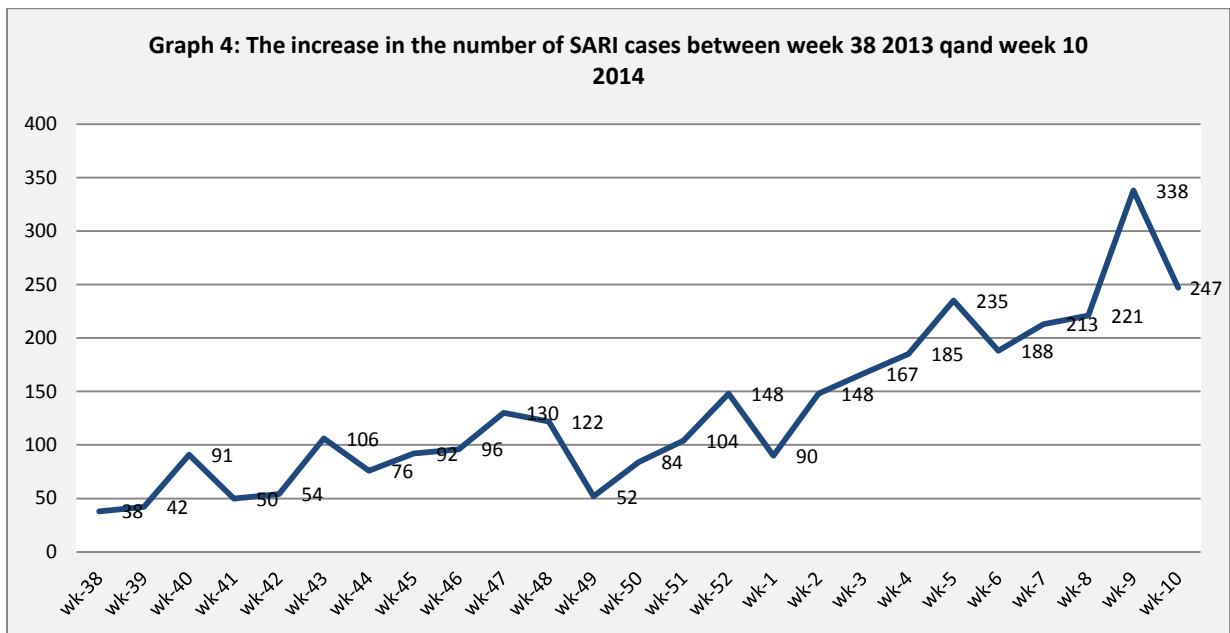
Out of the 286,522 total consultations, a total of 12,719 cases were reported; of which 6,905 cases were Influenza like Illness (54%) and 3,158 cases were Acute Diarrhoea (25%), 627 cases of AJS, 247 cases of Sever Acute Respiratory Infection, 110 cases of Suspected Measles, 46 cases of Bloody Diarrhoea, 16 cases of Meningitis, 3 cases of AWD and 2 AFP cases. Graph 2 shows the proportional morbidity for the top 4 diseases (to the total consultations, after excluding the data of 53 health facilities that did not report total consultations).



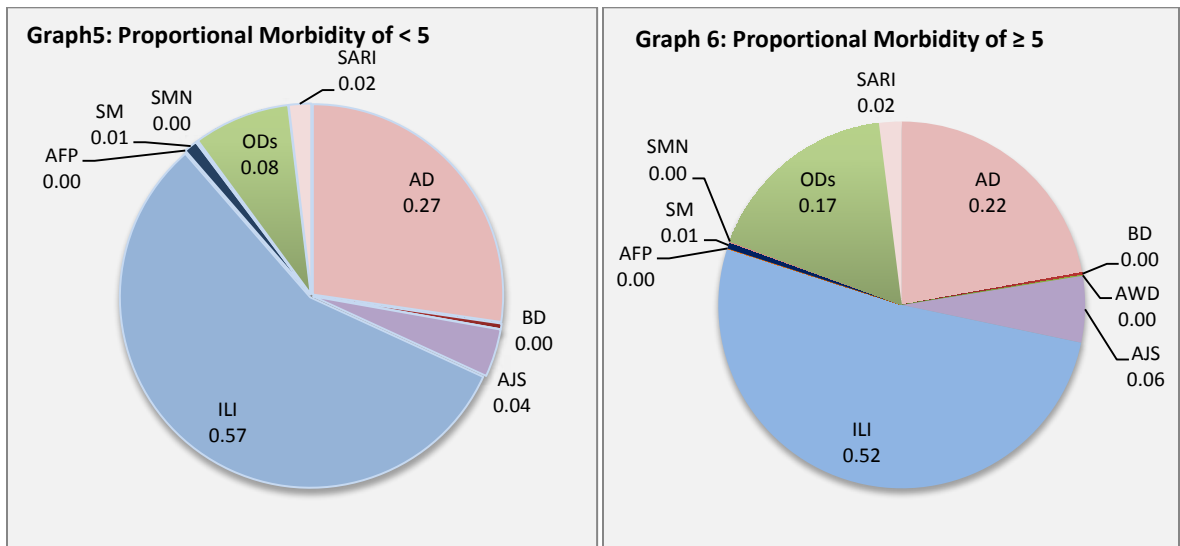
- Reported measles cases continued to increase. number of reported measles cases in DierEzor is still the highest. (See graph 3 below)



❖ SARI cases showed a slight decrease for this week as shown in the graph 4 below:



- ❖ In total, 1605 cases were reported as “other diseases”. The most important diseases reported within this group were: 364 cases of Leishmaniasis (most of which 60%, reported from Hamah and Aleppo) and 52 cases of Typhoid (most of which 48% reported in Idlib), In addition, there were 28 cases of Brucellosis and 17 cases of TB.
- ❖ 52% of the cases were distributed among < 5 age group.
- ❖ The most common cases among < 5 were ILI (57%) and AD cases (27%). Graphs 2 and 3 below show the proportional morbidity among < 5 and ≥ 5 year age groups respectively.
- ❖ 52% of the cases were reported among males



VI. The Response

- ❖ **AWD:** Cases detected are not clustered and were managed properly and recovered. No samples were collected from the mentioned cases.
- ❖ **AFP:** Stool samples were collected from the AFP cases and sent to the reference lab in Damascus. The vaccination campaign was implemented between 2 and 6 of March.
- ❖ **Measles:** Samples have been collected from some cases with investigation forms completed. Vit. A and measles vaccines will be provided
- ❖ **MENINGITIS:** Meningitis cases detected are not clustered. Cases were managed properly; and investigation forms were filled for some cases but not all; it shows that most of the cases are viral meningitis not bacterial. Preventive therapy was provided as necessary for contacts of the probable bacterial meningitis cases.
- ❖ **SARI:** The results of the samples collected were received and 43% of influenza positive samples were typed A(H1N1). Surveillance activities, raising awareness campaign and other protective measure continue across the country.
- ❖ **BD:** cases are not clustered. All cases were managed properly.
- ❖ Other response measures were also taken with regard to case management of Leishmaniasis, Hepatitis, TB and BRU cases. In addition to ensuring the availability of medicines and the implementation of sanitation measures in accordance with available capacity.

Table-1: Distribution of cases per age group, and by Governorate-week-10, 2014

Code	Age group	Sweida	Hamah	Daraa	Aleppo	Damascus	DierEzor	Idleb	Homs	Lattakia	Rural Damascus	Tartous	Raqua	Hassaka	Grand Total	
AD	<5	77	75	80	324	257	211	72	49	110	354	79	95	14	1797	3158
	≥5	47	53	45	310	226	214	83	51	70	124	79	43	16	1361	
BD	<5	7	0	3	0	1	19	0	0	1	0	0	1	0	32	46
	≥5	0	0	0	0	6	0	1	0	2	0	0	0	5	14	
AWD	<5	0	0	0	0	0	0	0	0	0	0	0	0	0	0	3
	≥5	0	0	0	0	0	0	0	0	3	0	0	0	0	3	
AJS	<5	5	17	12	28	17	31	38	14	29	51	0	22	4	268	627
	≥5	4	23	25	29	70	7	49	31	42	66	0	9	4	359	
ILI	<5	249	200	209	549	501	246	95	57	769	577	149	47	87	3735	6905
	≥5	189	191	192	535	523	229	97	84	340	570	137	12	71	3170	
AFP	<5	0	0	1	0	0	0	0	0	0	0	0	0	0	1	2
	≥5	0	1	0	0	0	0	0	0	0	0	0	0	0	1	
SM	<5	1	5	3	1	2	43	1	3	1	0	0	13	1	74	110
	≥5	0	2	0	0	1	21	0	4	1	0	0	7	0	36	
SMN	<5	1	5	0	1	1	0	2	0	0	0	0	0	1	11	16
	≥5	2	0	0	0	1	0	0	0	0	0	0	2	0	5	
SARI	<5	5	24	0	0	73	16	5	0	2	0	0	0	0	125	247
	≥5	6	40	0	0	59	11	3	1	1	0	1	0	0	122	
Others	<5	1	50	18	231	28	11	7	34	14	140	0	0	5	539	1605
	≥5	18	143	62	221	118	90	51	146	12	202	1	1	1	1066	
Total <5		346	376	326	1134	880	577	220	157	926	1122	228	178	112	6582	12719
Total ≥5		266	453	324	1095	1004	572	284	317	471	962	218	74	97	6137	
Total		612	829	650	2229	1884	1149	504	474	1397	2084	446	252	209	12719	