

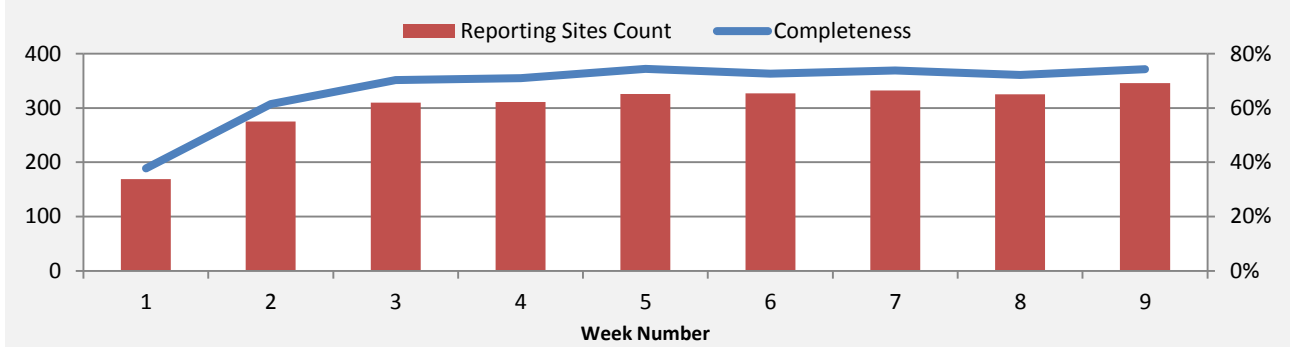
Highlights:

- ❖ 4 AFP cases were detected in Damascus, Idleb and Hassaka.
- ❖ 1 AWD case was detected in Hassaka.
- ❖ The increase in SARI cases continues for this week and A(H1N1) has been detected

I. Completeness & Timeliness of Reporting

- ❖ The overall completeness of reporting was 74%; (346 out of total 466 EWARS sentinel sites) (see Graph 1). 13 governorates have reported this week.

Graph 1: Completeness of reporting

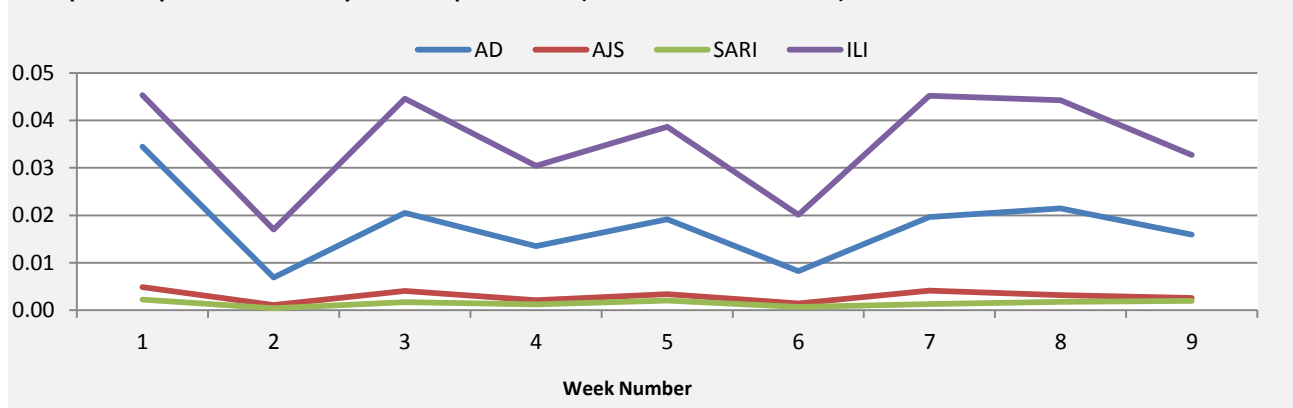


- ❖ Timeliness of reporting is 71%.

II. The Morbidity Cases

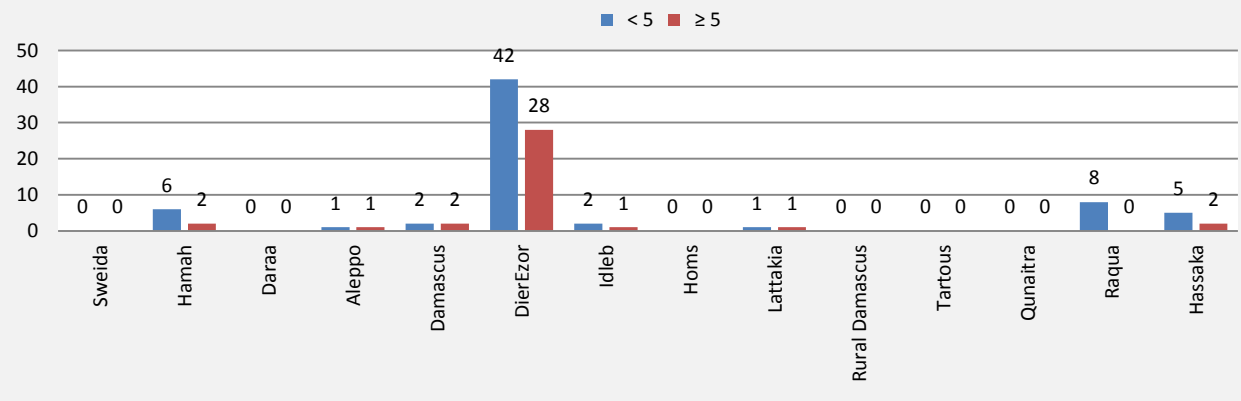
- ❖ Out of the 171,439 total consultations, a total of 10,748 cases were reported; of which 5,930 cases were Influenza like Illness (55%) and 2,842 cases were Acute Diarrhea (26%) and In addition, 469 cases of AJS, 338 cases of Sever Acute Respiratory Infection, 104 cases of Suspected Measles, 63 cases of Bloody Diarrhea, 17 cases of Meningitis, 4 cases of AFP and 1 AWD cases. Graph 2 shows the proportional morbidity for the top 4 diseases (to the total consultations, after excluding the data of 25 health facilities that did not report total consultations).

Graph 2: Proportional morbidity for the top 4 diseases (to the total consultations)



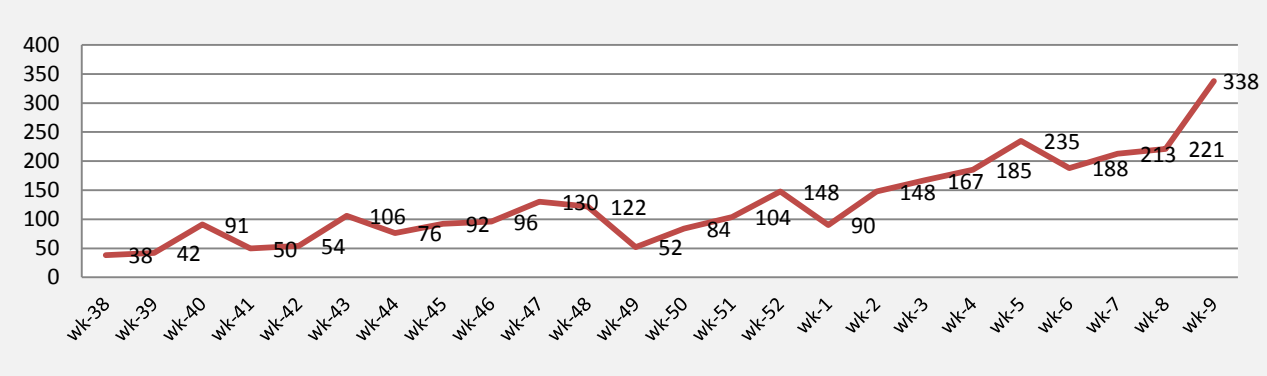
- Reported measles cases decreased slightly at country level, however, number of reported measles cases in DierEzor is still the highest. Graph 3 below shows the distribution of suspected measles cases per governorates

Graph3: Distribution of suspected measles cases per governorates (week 9)

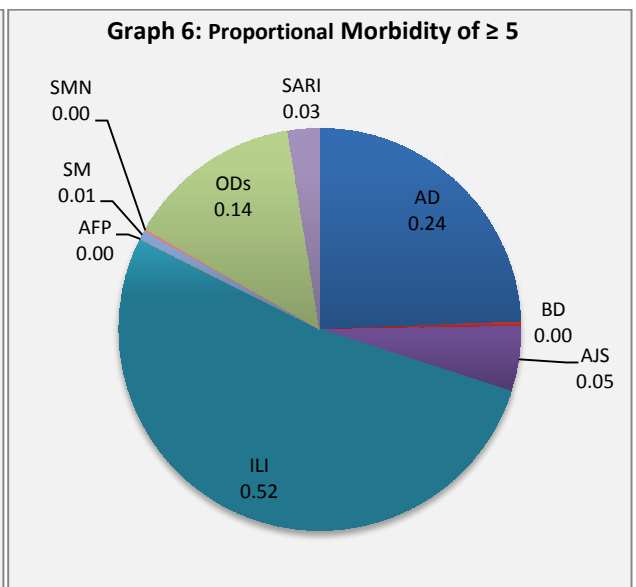
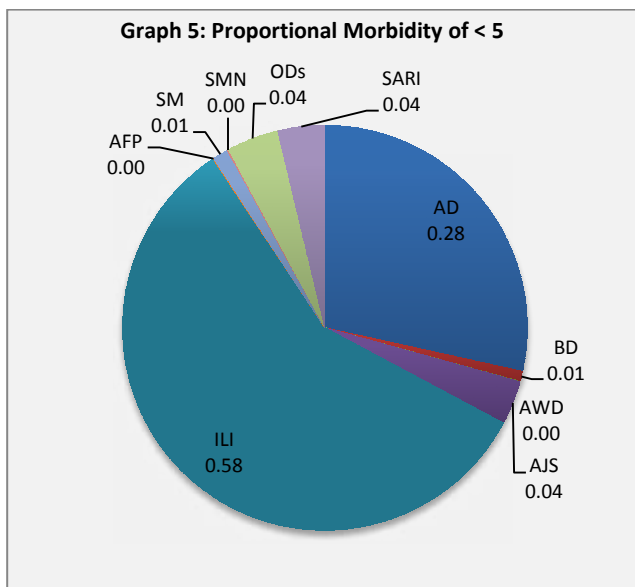


❖ SARI cases in many governorates have also showed a notable increase since previous weeks as shown in the graph 4 below:

Graph 4: Trend Analysis of SARI cases between week 38 - 2013 and week 9 - 2014



- ❖ In total, 980 cases were reported as “other diseases”. The most important diseases reported within this group were: 274 cases of Leishmaniasis (most of which 44%, reported from Hamah) and 35 cases of Typhoid (most of which 66% reported in DierEzor), In addition, there were 30 cases of Brucellosis and 13 cases of TB.
- ❖ 51% of the cases were distributed among < 5 age group.
- ❖ The most common cases among < 5 were ILI (58%) and AD cases (29%). Graphs 5 and 6 below show the proportional morbidity among < 5 and ≥ 5 year age groups respectively.



❖ 51% of the cases were reported among males

III. The Response

- ❖ **AWD:** No sample was collected from the mentioned case. The case recovered rapidly
- ❖ **AFP:** Stool samples were collected from the AFP cases and sent to the reference lab in Damascus. The vaccination campaign will be implemented from 2 to 6 March.
- ❖ **Measles:** Samples have been collected from some cases with investigation forms completed. Vit. A and measles vaccines will be provided
- ❖ **MENINGITIS:** Meningitis cases detected are not clustered. Cases were managed properly; and investigation forms were filled for some cases but not all; it shows that most of the cases are viral meningitis not bacterial. Preventive therapy was provided as necessary for contacts of the probable bacterial meningitis cases.
- ❖ **SARI:** Influenza A (H1N1) was detected. Medicines and vaccines were distributed to the governorates to be provided for high risk groups. Raising awareness campaign is being implemented across the country
- ❖ **BD:** cases are not clustered. All cases were managed properly.
- ❖ **Other response measures were also taken with regard to case management of Leishmaniasis, Hepatitis, TB and BRU cases. In addition to ensuring the availability of medicines and the implementation of sanitation measures in accordance with available capacity.**

Table-1: Distribution of cases per age group, and by Governorate-week-9, 2014

Code	Age group	Sweida	Hamah	Daraa	Aleppo	Damascus	DierEzor	Idleb	Homs	Lattakia	Rural Damascus	Tartous	Qunaitra	Raqa	Hassaka	Grand Total	
AD	< 5	73	102	83	268	216	284	87	5	73	84	58	9	80	112	1534	2842
	≥ 5	46	57	50	243	213	290	71	6	48	77	64	22	19	102	1308	
BD	< 5	3	0	2	0	6	19	0	0	3	0	0	0	1	10	44	63
	≥ 5	1	0	1	0	3	0	0	0	4	0	0	0	0	10	19	
AWD	< 5	0	0	0	0	0	0	0	0	0	0	0	0	0	1	1	1
	≥ 5	0	0	0	0	0	0	0	0	0	0	0	0	0	0	0	
AJS	< 5	9	18	15	14	22	25	28	0	15	5	0	1	31	6	189	469
	≥ 5	20	39	19	23	48	11	37	5	27	32	2	2	12	3	280	
ILI	< 5	182	154	208	514	705	219	113	2	624	120	86	28	17	149	3121	5930
	≥ 5	173	286	212	471	574	159	112	2	357	140	111	41	15	156	2809	
AFP	< 5	0	0	0	0	2	0	1	0	0	0	0	0	0	0	3	4
	≥ 5	0	0	0	0	0	0	0	0	0	0	0	0	0	1	1	
SM	< 5	0	6	0	1	2	42	2	0	1	0	0	0	8	5	67	104
	≥ 5	0	2	0	1	2	28	1	0	1	0	0	0	0	2	37	
SMN	< 5	0	0	0	0	1	1	0	0	1	0	0	0	2	1	6	17
	≥ 5	2	0	0	0	3	0	0	0	0	0	0	0	0	6	11	
SARI	< 5	15	28	0	0	130	15	11	0	2	0	0	0	0	0	201	338
	≥ 5	5	69	0	0	52	7	0	0	2	0	0	0	0	2	137	
ODs	< 5	2	27	9	82	20	19	1	1	7	44	4	7	1	0	224	980
	≥ 5	8	138	55	104	111	95	37	17	14	139	7	19	5	7	756	
Total < 5		284	335	317	879	1104	624	243	8	726	253	148	45	140	284	5390	10748
Total ≥ 5		255	591	337	842	1006	590	258	30	453	388	184	84	51	289	5358	
Total		539	926	654	1721	2110	1214	501	38	1179	641	332	129	191	573	10748	