

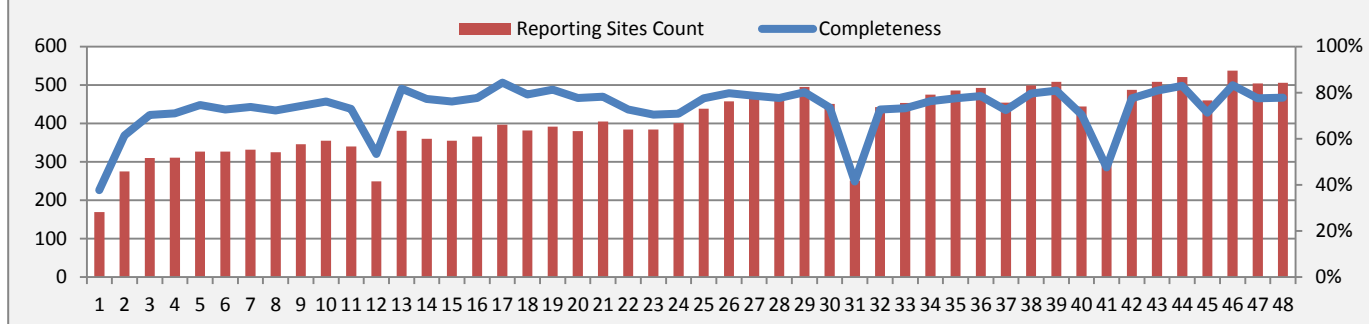
Highlights:

- ❖ AJS continued to show an increase for this week

❖ Completeness& Timeliness of Reporting

- ❖ The overall completeness of reporting was 78%; (506 out of total 650 EWARS sentinel sites). (See Graph 1). 14 governorates have reported this week.

Graph 1: completeness of reporting

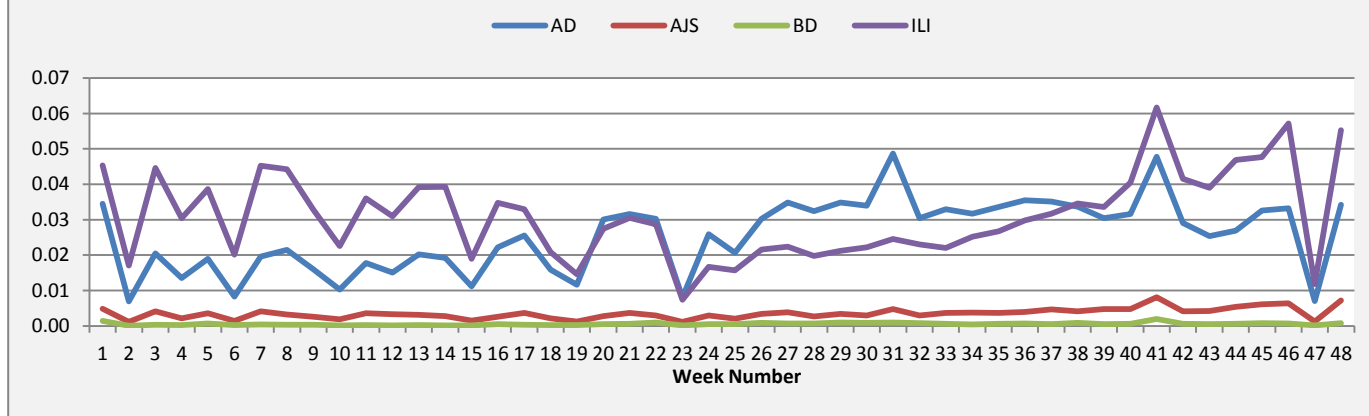


- ❖ Timeliness of reporting is 99%.

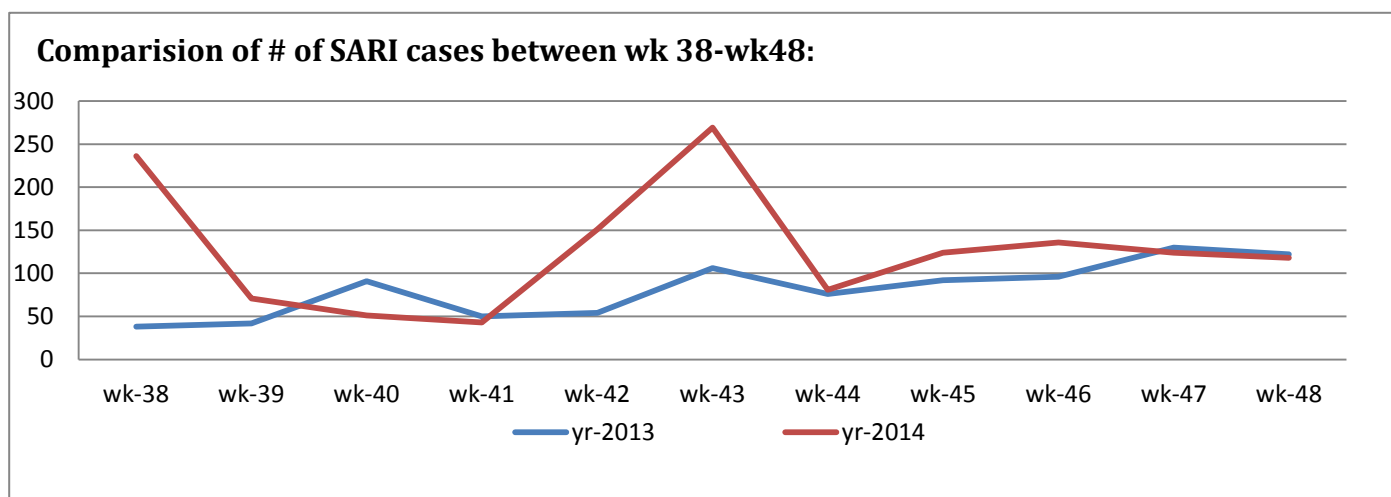
❖ The Morbidity Cases

Out of the 157,074 total consultations, a total of 19,872 cases were reported; of which 9,390 cases were Influenza like Illness (47%), 5,703 cases were Acute Diarrhoea (29%), 1,186 cases of AJS, 135 cases of Bloody Diarrhoea, 118 cases of Severe Acute Respiratory Infection, 30 cases of Meningitis, and 26 cases of Suspected Measles. (Graph 2 shows the proportional morbidity for the top 4 diseases (to the total consultations, after excluding the data of 38 health facilities that did not report total consultations).

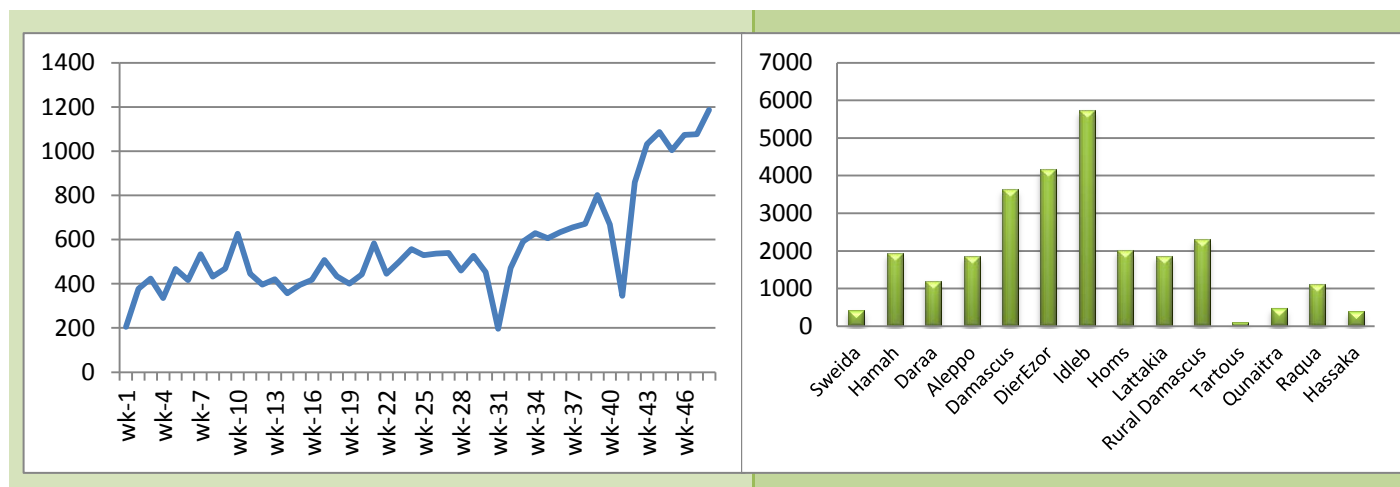
Graph 2: Proportional morbidity for the top 4 diseases (to the total consultations)



- ❖ Below chart reflects the trend in the number of SARI cases in 2013 and 2014 in the period between week 38 and 48, noting that the decrease in week 40 and 41 in 2014 (red line) might be due to the low reporting during Eid vacation, and considering the differences in the number of sentinel sites at the two reporting periods where in 2013 the number of reporting hospitals was 65, while in 2014 was 102.

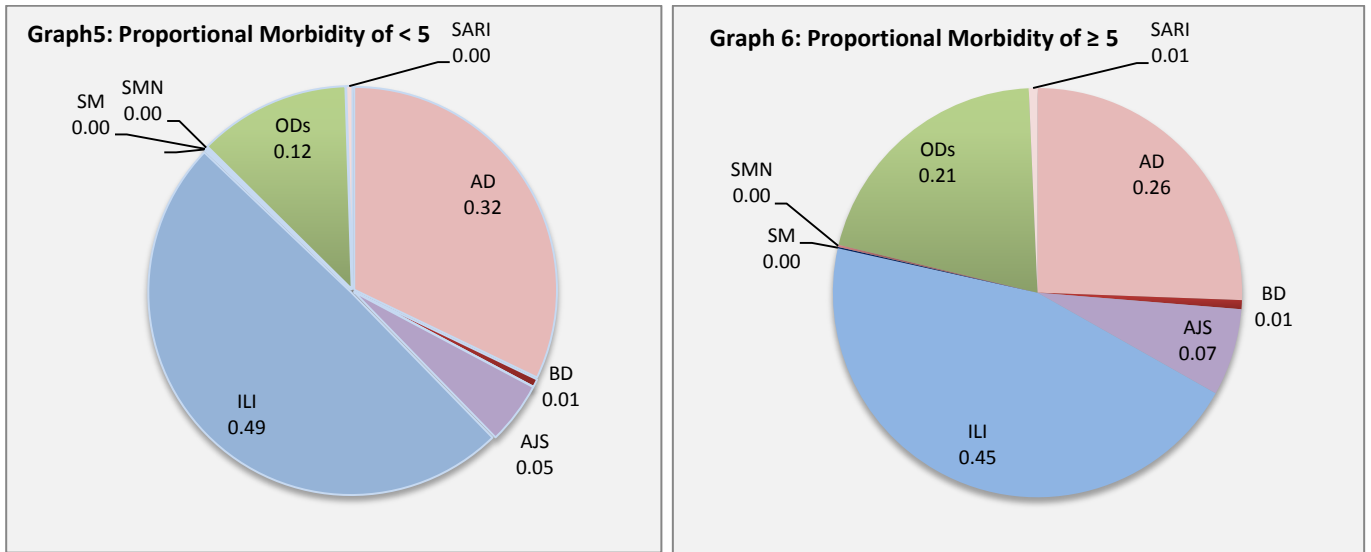


- ❖ Graph 4 displays the trend of the (27,221) AJS cases between wk1-w48/2014 with a remarkable increase during the previous three weeks. The distribution of the cases per governorates shows that Idleb, Dier Ezor , and Homs have the highest number of cases.



- ❖ In total, 3,284 cases were reported as “other diseases”. The most important diseases reported within this group were: 437 cases of Leishmaniasis (most of which were reported from Rural Damascus 33% and Idleb 33%), 145 cases of Typhoid (most of which were reported from DierEzor 29%, Rural Damascus 28% and Idleb 24%), 43 cases of Brucellosis (most of which were reported from Rural Damascus 33%), 16 case of TB, and 5 cases of Pertussis.
- ❖ 52%of the cases were distributed among ≥ 5 age group.

- ❖ ILI consists (49%) of the cases among <5 and (45%) among ≥ 5 , while AD cases consists (32%) among <5 and (26%) among ≥ 5 .
- ❖ Graphs 5 and 6 below show the proportional morbidity among < 5 and ≥ 5 year age groups respectively.



- ❖ 51% of the cases were distributed among males.

❖ The Response

AJS and other water borne diseases: The mass hygiene promotion campaign is starting the first week of December with a set of raising awareness activities in collaboration with the ministry of information. In addition, MOH has circulated official requests to the directorates of school health and directorates of health in all governorates to monitor the environmental and health conditions in the schools and in IDPs shelters.

SARI: 300,000 influenza vaccines were distributed for high risk groups as per WHO recommendations. A mini documentary on influenza prevention is currently being produced to raise the awareness of the general public on influenza prevention.

Table-1: Distribution of cases per age group, and by Governorate-week-48, 2014:

Code	Age group	Sweida	Hamah	Daraa	Aleppo	Damascus	DierEzor	Idleb	Homs	Lattakia	Rural Damascus	Tartous	Qunaitra	Raqua	Hassaka	Grand Total	
AD	< 5	95	96	108	126	329	804	550	111	207	301	36	27	182	70	3042	5703
	≥ 5	78	75	82	107	371	744	472	72	155	272	48	43	72	70	2661	
BD	< 5	2	0	2	0	6	24	0	1	6	2	0	2	3	13	61	135
	≥ 5	2	0	1	0	13	9	0	0	14	2	0	7	3	23	74	
AWD	< 5	0	0	0	0	0	0	0	0	0	0	0	0	0	0	0	0
	≥ 5	0	0	0	0	0	0	0	0	0	0	0	0	0	0	0	
AJS	< 5	0	6	6	32	20	56	217	66	20	22	4	4	12	4	469	1186
	≥ 5	0	30	9	30	71	130	206	104	33	76	2	3	9	14	717	
ILI	< 5	309	144	162	657	490	946	582	138	397	439	341	22	4	47	4678	9390
	≥ 5	440	251	176	426	620	814	517	158	230	513	430	29	1	107	4712	
AFP	< 5	0	0	0	0	0	0	0	0	0	0	0	0	0	0	0	0
	≥ 5	0	0	0	0	0	0	0	0	0	0	0	0	0	0	0	
SM	< 5	0	0	0	0	3	1	8	0	1	0	0	1	1	0	15	26
	≥ 5	0	0	0	0	2	1	7	0	1	0	0	0	0	0	11	
SMN	< 5	0	0	0	0	4	0	7	0	0	0	0	0	1	0	12	30
	≥ 5	2	2	0	0	5	0	6	0	2	0	0	1	0	0	18	
SARI	< 5	7	10	0	0	19	5	5	0	1	0	0	0	0	0	47	118
	≥ 5	11	15	0	0	39	3	2	0	0	1	0	0	0	0	71	
Others	< 5	3	47	41	160	48	29	92	365	19	255	6	52	3	26	1146	3284
	≥ 5	30	148	100	313	144	107	197	492	48	451	29	50	16	13	2138	
Total < 5		416	303	319	975	919	1865	1461	681	651	1019	387	108	206	160	9470	19872
Total ≥ 5		563	521	368	876	1265	1808	1407	826	483	1315	509	133	101	227	10402	
Total		979	824	687	1851	2184	3673	2868	1507	1134	2334	896	241	307	387	19872	