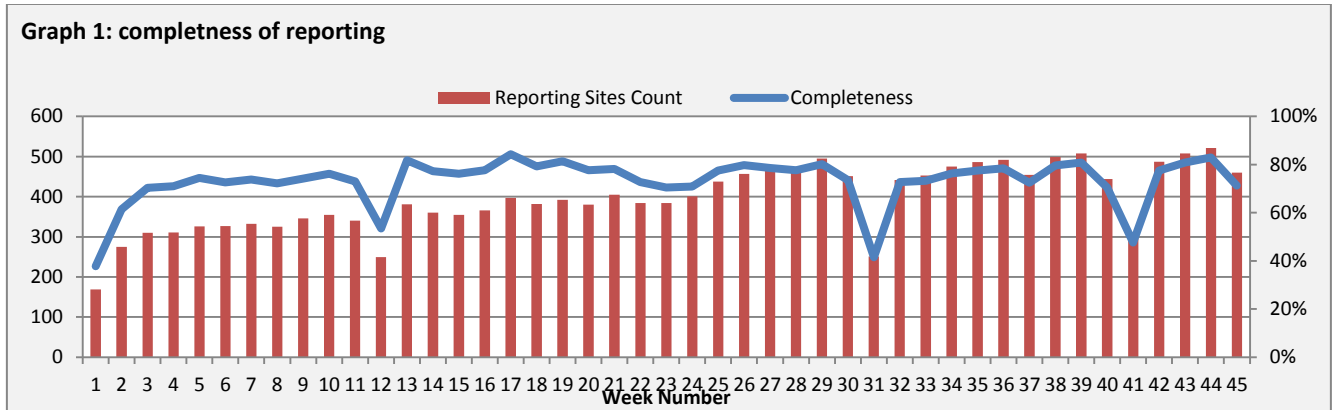


Highlights:

- ❖ 1 AFP case was detected in Homs.
- ❖ 1 AWD case was detected in Daraa.

Completeness & Timeliness of Reporting

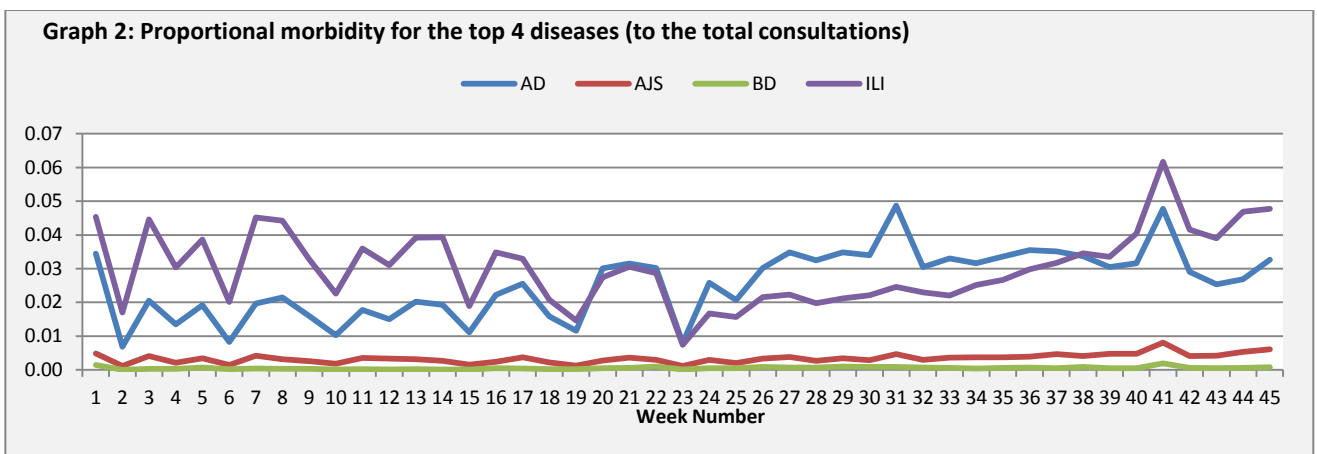
- ❖ The overall completeness of reporting was 71%; (460 out of total 645 EWARS sentinel sites). (See Graph 1). 14 governorates have reported this week.



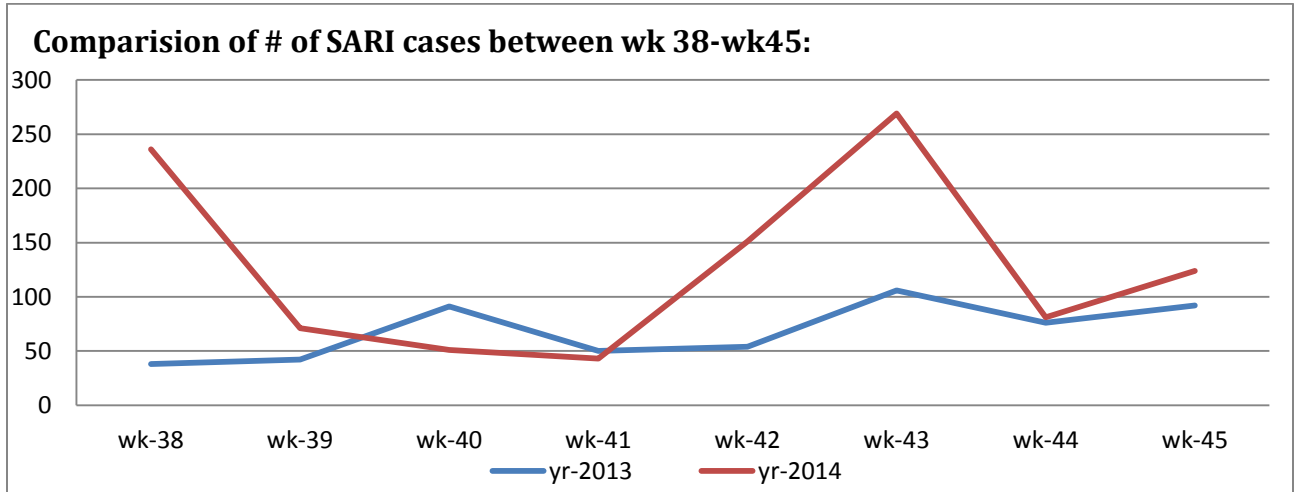
- ❖ Timeliness of reporting is 94%.

The Morbidity Cases

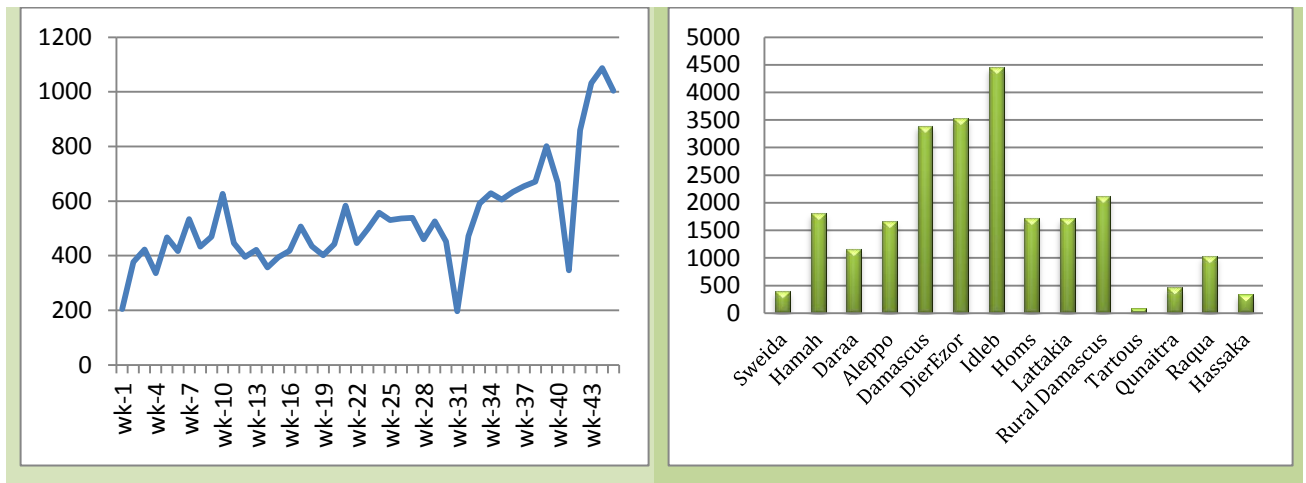
Out of the 153,564 total consultations, a total of 17,727 cases were reported; of which 8,385 cases were Influenza like Illness (47%), 5,241 cases were Acute Diarrhoea (30%), 1,004 cases of AJS, 140 cases of Bloody Diarrhoea, 124 cases of Sever Acute Respiratory Infection, 23 cases of Suspected Measles, 22 cases of Meningitis, 1 case of AWD, and 1 case of AFP. (Graph 2 shows the proportional morbidity for the top 4 diseases (to the total consultations, after excluding the data of 34 health facilities that did not report total consultations).



- ❖ Below chart reflects the trend in the number of SARI cases in 2013 and 2014 in the period between week 38 and 45, noting that the decrease in week 40 and 41 in 2014 (red line) might be due to the low reporting during Eid vacation, and considering the differences in the number of sentinel sites at the two reporting periods where in 2013 the number of reporting hospitals was 65, while in 2014 was 102.



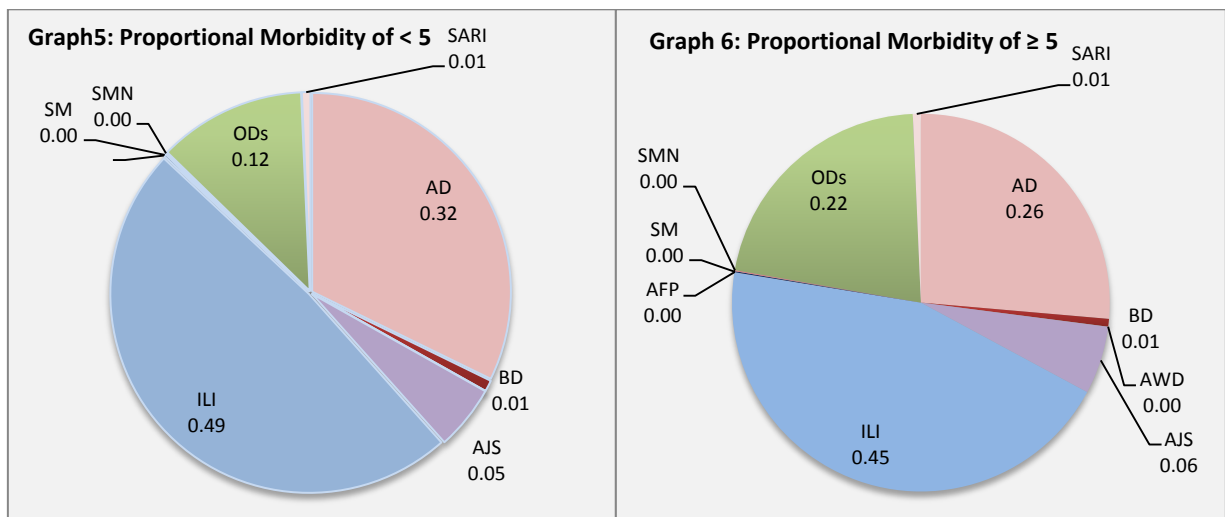
- ❖ Graph 4 displays the trend of the (23,844) AJS cases between wk1-w45/2014 with a remarkable increase during the previous three weeks. The distribution of the cases per governorates shows that Idleb, Damascus and DierEzor have the highest number of cases



- ❖ In total, 2,786 cases were reported as “other diseases”. The most important diseases reported within this group were: 440 cases of Leishmaniasis (most of which were reported from Idleb 32% and Aleppo 21%), 191 cases of Typhoid (most of which were reported from DierEzor 35% and Rural Damascus 31%), 88 cases of Brucellosis (most of which were reported from DierEzor 52%), 14 case of TB, and 3 cases of Pertussis.

- ❖ 55% of the cases were distributed among ≥ 5 age group.

- ❖ ILI consists (49 %) of the cases among <5 and (45%) among ≥ 5, while AD cases consists (32%) among <5 and (26%) among ≥ 5.
- ❖ Graphs 5 and 6 below show the proportional morbidity among < 5 and ≥ 5 year age groups respectively.



- ❖ The cases were distributed equally among males and females.

The Response

AFP: Stool samples were collected from the AFP case and sent to the reference lab in Damascus.

AWD: The AWD case revealed to be Acute Diarrhoea, no samples were collected.

AJS: WHO in coordination with MOH are planning for a mass hygiene promotion campaign targeting households, schools, food suppliers in addition to the distribution of hygiene kits in the most affected governorates. The campaign will start first week of December till end of this year.

SARI: 300,000 influenza vaccines were distributed for high risk groups including Health care workers who are in direct contact with SARI patients in ICU and elderly particularly who have chronic diseases in the IDPs shelters at health facility level.

BD: cases are not clustered. All cases were managed properly.

Table-1: Distribution of cases per age group, and by Governorate-week-45, 2014:

Code	Age group	Sweida	Hamah	Daraa	Aleppo	Damascus	DierEzor	Idleb	Homs	Lattakia	Rural Damascus	Tartous	Qunaitra	Raqua	Hassaka	Grand Total
AD	< 5	113	97	21	125	384	611	469	49	30	247	63	37	166	235	2647
	≥ 5	128	55	27	117	428	540	438	36	24	383	125	48	99	146	2594
BD	< 5	1	1	0	0	2	20	0	0	1	18	0	4	1	27	75
	≥ 5	2	1	5	0	5	1	0	1	1	23	0	6	2	18	65
AWD	< 5	0	0	0	0	0	0	0	0	0	0	0	0	0	0	0
	≥ 5	0	0	1	0	0	0	0	0	0	0	0	0	0	0	1
AJS	< 5	0	16	8	15	22	89	197	1	3	60	0	3	14	4	432
	≥ 5	3	33	3	23	71	134	197	6	9	59	0	5	12	17	572
ILI	< 5	353	157	33	575	515	661	553	36	134	397	408	3	55	108	3988
	≥ 5	534	146	39	305	756	680	485	34	48	701	516	9	38	106	4397
AFP	< 5	0	0	0	0	0	0	0	0	0	0	0	0	0	0	0
	≥ 5	0	0	0	0	0	0	0	1	0	0	0	0	0	0	1
SM	< 5	0	0	0	0	2	4	7	0	0	0	0	0	2	0	15
	≥ 5	0	0	0	0	1	2	5	0	0	0	0	0	0	0	8
SMN	< 5	0	2	0	0	2	1	1	0	0	1	0	0	4	1	12
	≥ 5	0	1	0	0	6	0	1	0	0	0	0	0	2	0	10
SARI	< 5	10	8	0	0	7	5	4	0	0	6	0	0	0	17	57
	≥ 5	9	2	0	0	31	1	2	1	0	10	0	0	0	11	67
Others	< 5	1	40	2	216	49	31	99	22	0	247	7	73	4	23	814
	≥ 5	6	117	22	413	171	160	172	49	1	694	23	84	13	47	1972
Total < 5		478	321	64	931	983	1422	1330	108	168	976	478	120	246	415	8040
Total ≥ 5		682	355	97	858	1469	1518	1300	128	83	1870	664	152	166	345	9687
Total		1160	676	161	1789	2452	2940	2630	236	251	2846	1142	272	412	760	17727