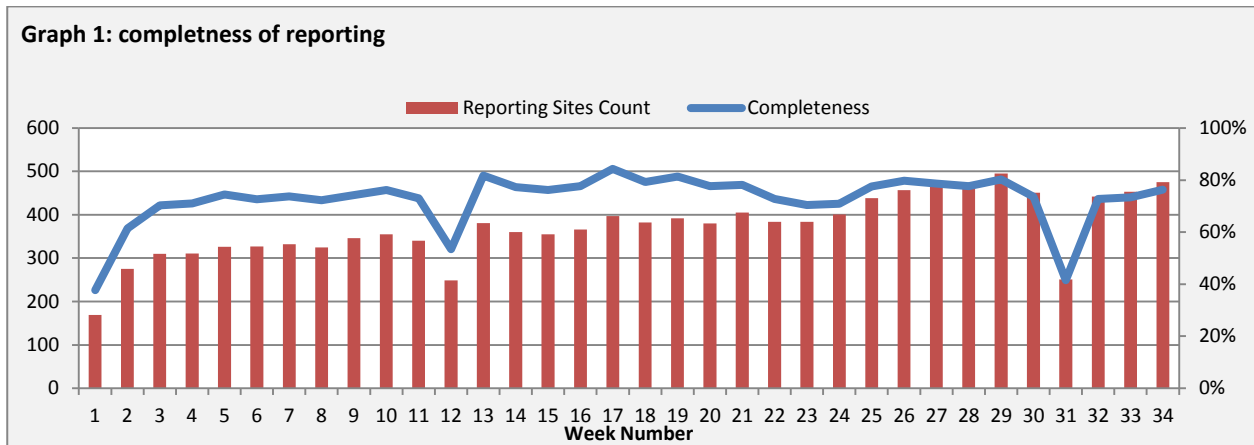


Highlights:

- ❖ 4 AFP cases were detected in Homs (2), Damascus (1), and Raqa (1).

*** Completeness & Timeliness of Reporting**

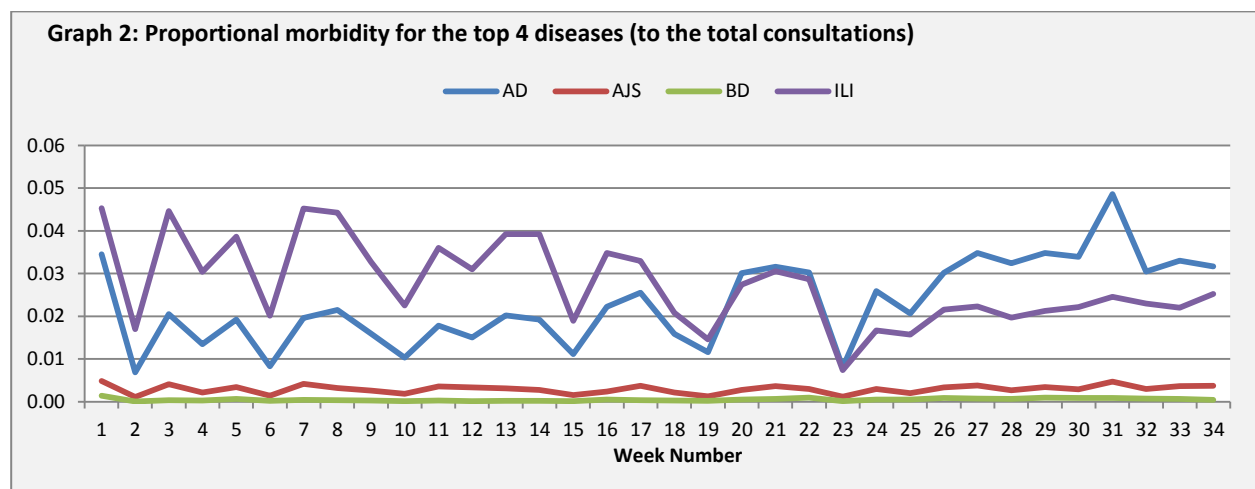
- ❖ The overall completeness of reporting was 76%; (475 out of total 622 EWARS sentinel sites). (See Graph 1). 14 governorates have reported this week.



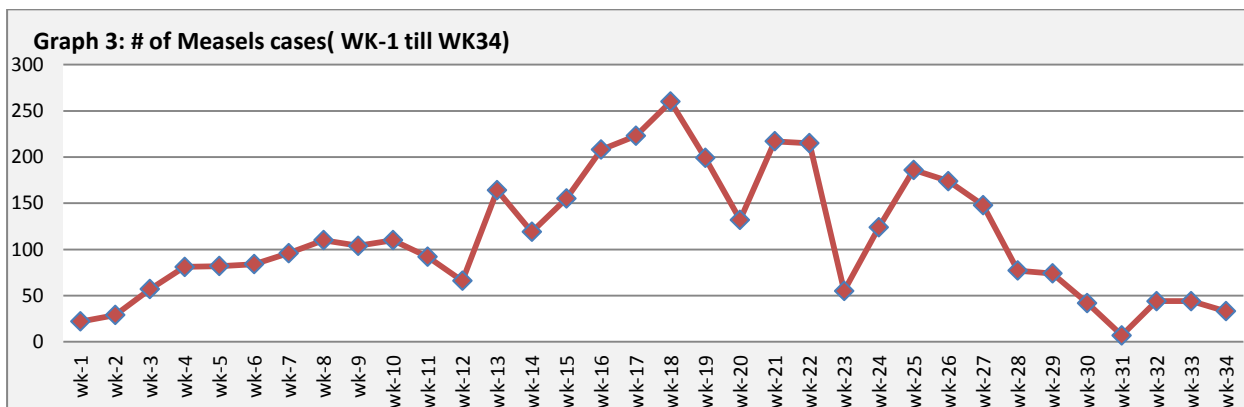
- ❖ Timeliness of reporting is 89%.

▪ The Morbidity Cases

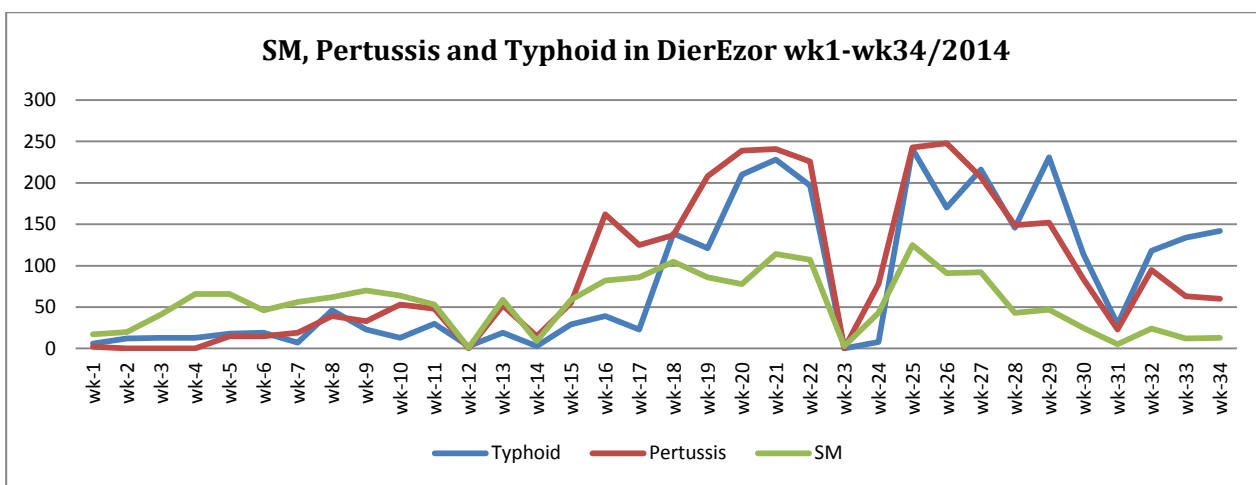
Out of the 142,282 total consultations, a total of 11,735 cases were reported; of which 5,130 cases were Acute Diarrhoea (44%), and 3,704 cases were Influenza like Illness (32%), 629 cases of AJS, 166 cases of Sever Acute Respiratory Infection, 146 cases of Bloody Diarrhoea, 33 cases of Suspected Measles, 18 cases of Meningitis, and 4 case of AFP. (Graph 2 shows the proportional morbidity for the top 4 diseases (to the total consultations, after excluding the data of 73 health facilities that did not report total consultations)).



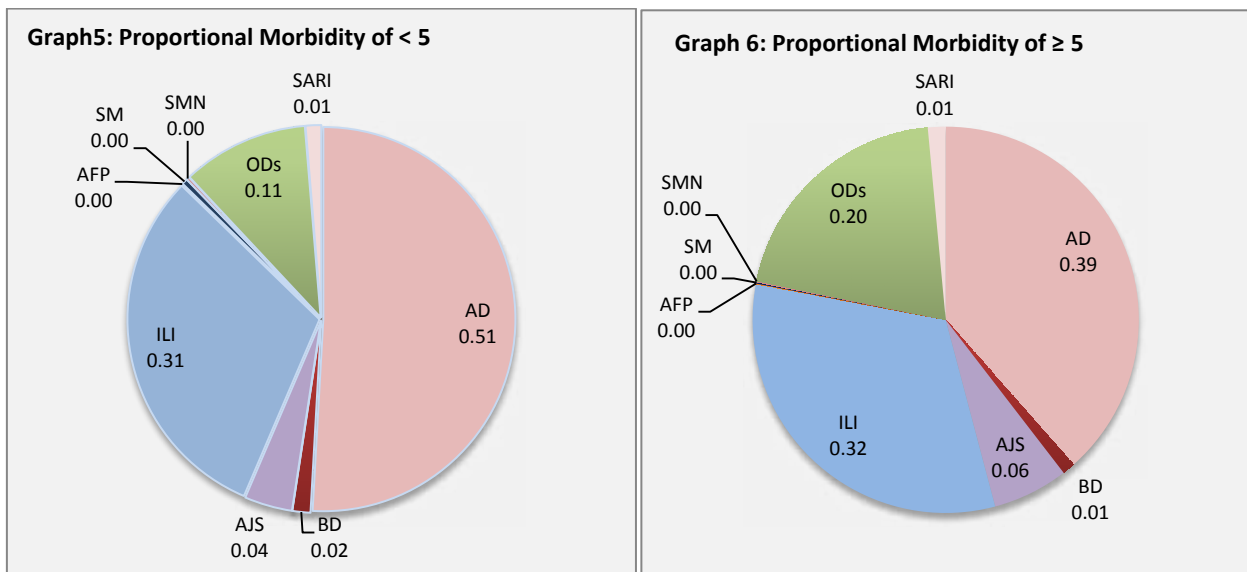
- ❖ Below chart reflects the trend in the number of suspected measles cases between week 1 and week 34 (2014) a notable decrease in the number of measles cases started to be remarked.



- ❖ Below graph (4) reflects the trend in the number of Pertussis, Typhoid and suspected measles cases reported from DierEzor between week 1 and week 34.



- ❖ In total, 1,905 cases were reported as “other diseases”. The most important diseases reported within this group were: 224 cases of Leishmaniasis (most of which were reported from Aleppo 31%), 203 cases of Typhoid (most of which were reported from DierEzor 70%), 156 cases of Brucellosis (most of which were reported from DierEzor 36%), 65 cases of Pertussis (most of which were reported from DierEzor 92%), and 25 case of TB.
- ❖ 58% of the cases were distributed among ≥ 5 age group.
- ❖ The most common cases among <5 : AD cases were (51%) and ILI (31%). Graphs 6 and 7 below show the proportional morbidity among < 5 and ≥ 5 year age groups respectively.
- ❖ 51% of the cases were reported among males.



▪ **The Response**

AFP: Stool samples was collected from the AFP case and sent to the reference lab in Damascus. The new round of vaccination campaign will be implemented between 31th August and 4th September.

Meningitis: Meningitis cases detected are not clustered. Cases were managed properly; and investigation forms were filled for some cases but not all; it shows that most of the cases are viral meningitis not bacterial. Preventive therapy was provided as necessary for contacts of the probable bacterial meningitis cases.

BD: All cases were managed properly.

Other response measures were also taken with regard to case management of Leishmaniasis, Hepatitis, TB and BRU cases. In addition to ensuring the availability of medicines and the implementation of sanitation measures in accordance with available capacity.

Table-1: Distribution of cases per age group, and by Governorate-week-34, 2014:

Code	Age group	Sweida	Hamah	Daraa	Aleppo	Damascus	DierEzor	Idleb	Homs	Lattakia	Rural Damascus	Tartous	Qunaitra	Raqua	Hassaka	Grand Total	
AD	< 5	177	136	151	209	420	485	90	40	186	307	119	70	105	18	2513	5130
	≥ 5	163	120	114	145	588	478	104	63	118	295	261	76	86	6	2617	
BD	< 5	14	0	4	0	4	10	0	0	6	33	1	0	0	3	75	146
	≥ 5	5	0	1	0	4	3	0	0	10	37	0	3	0	8	71	
AWD	< 5	0	0	0	0	0	0	0	0	0	0	0	0	0	0	0	0
	≥ 5	0	0	0	0	0	0	0	0	0	0	0	0	0	0	0	
AJS	< 5	1	11	21	12	20	23	44	24	12	18	1	4	8	0	199	629
	≥ 5	6	28	21	43	48	67	47	71	19	57	0	15	5	3	430	
ILI	< 5	116	40	83	120	297	267	63	16	59	174	96	120	71	0	1522	3704
	≥ 5	180	101	78	109	246	362	55	43	35	334	182	436	21	0	2182	
AFP	< 5	0	0	0	0	0	0	0	1	0	0	0	0	1	0	2	4
	≥ 5	0	0	0	0	1	0	0	1	0	0	0	0	0	0	2	
SM	< 5	0	1	0	1	9	5	1	1	1	0	0	0	5	0	24	33
	≥ 5	0	0	0	0	1	8	0	0	0	0	0	0	0	0	9	
SMN	< 5	2	0	0	1	6	0	1	0	0	0	0	0	2	0	12	18
	≥ 5	0	0	0	0	1	0	0	0	0	3	0	1	1	0	6	
SARI	< 5	49	4	0	0	7	1	3	0	0	1	0	0	0	0	65	166
	≥ 5	58	2	0	0	36	0	1	0	0	4	0	0	0	0	101	
Others	< 5	2	22	15	187	37	68	1	21	7	113	4	42	7	0	526	1905
	≥ 5	13	104	68	285	226	276	7	63	9	206	40	75	7	0	1379	
Total < 5		361	214	274	530	800	859	203	103	271	646	221	236	199	21	4938	11735
Total ≥ 5		425	355	282	582	1151	1194	214	241	191	936	483	606	120	17	6797	
Total		786	569	556	1112	1951	2053	417	344	462	1582	704	842	319	38	11735	