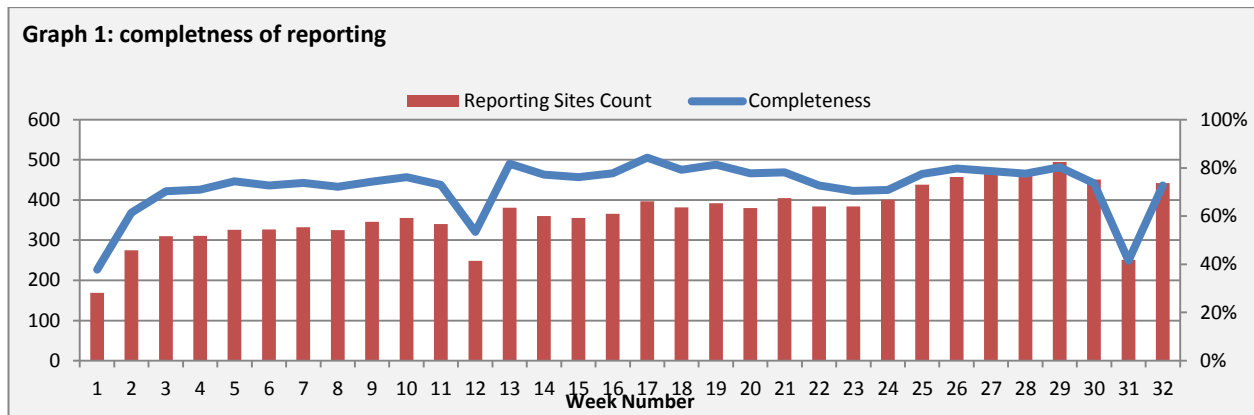


Highlights:

- ❖ 4 AFP cases were detected in Sweida, Hamah, DierEzor and Lattakia.

*** Completeness & Timeliness of Reporting**

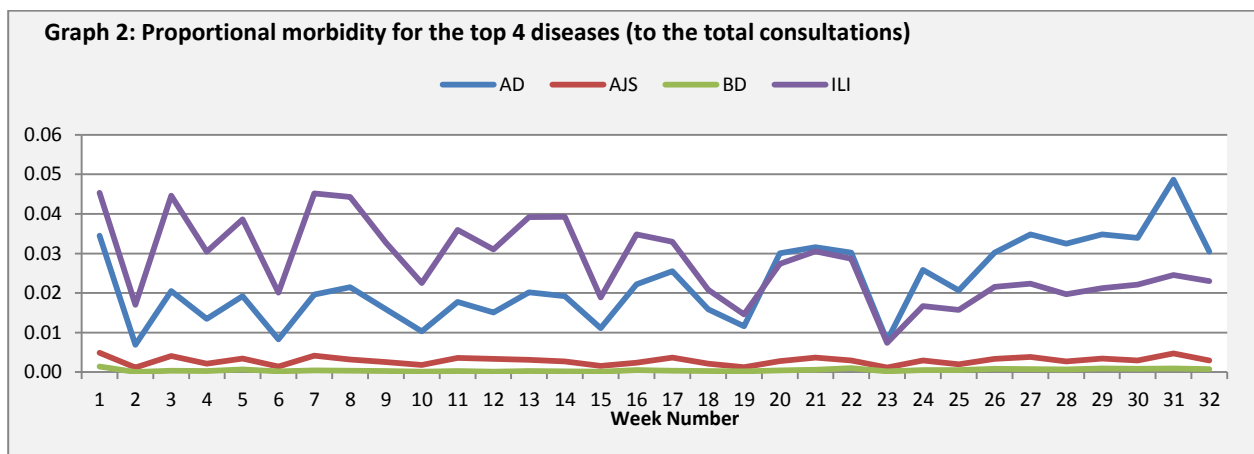
- ❖ The overall completeness of reporting was 73%; (442 out of total 608 EWARS sentinel sites). (See Graph 1). 14 governorates have reported this week.



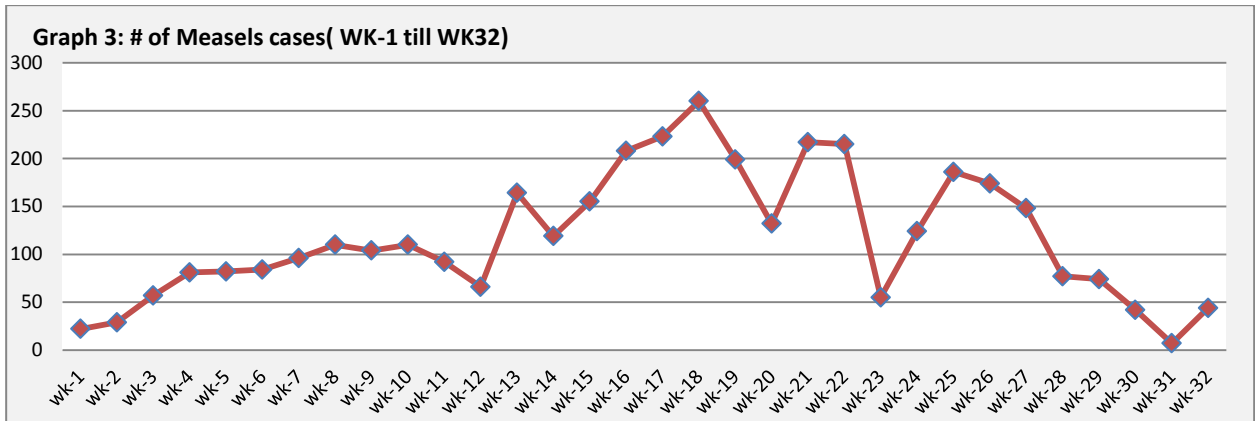
- ❖ Timeliness of reporting is 96%.

▪ The Morbidity Cases

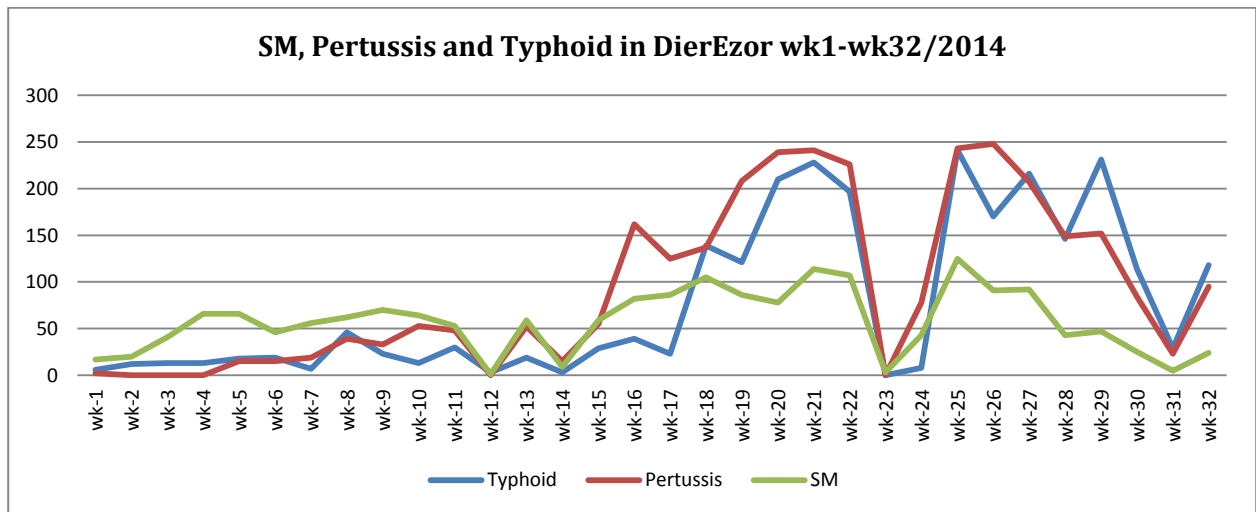
Out of the 148,597 total consultations, a total of 11,006 cases were reported; of which 5,139 cases were Acute Diarrhoea (47%), and 3,578 cases were Influenza like Illness (33%), 472 cases of AJS, 122 cases of Bloody Diarrhoea, 58 cases of Sever Acute Respiratory Infection, 44 cases of Suspected Measles, 21 cases of Meningitis, and 4 cases of AFP. (Graph 2 shows the proportional morbidity for the top 4 diseases (to the total consultations, after excluding the data of 43 health facilities that did not report total consultations).



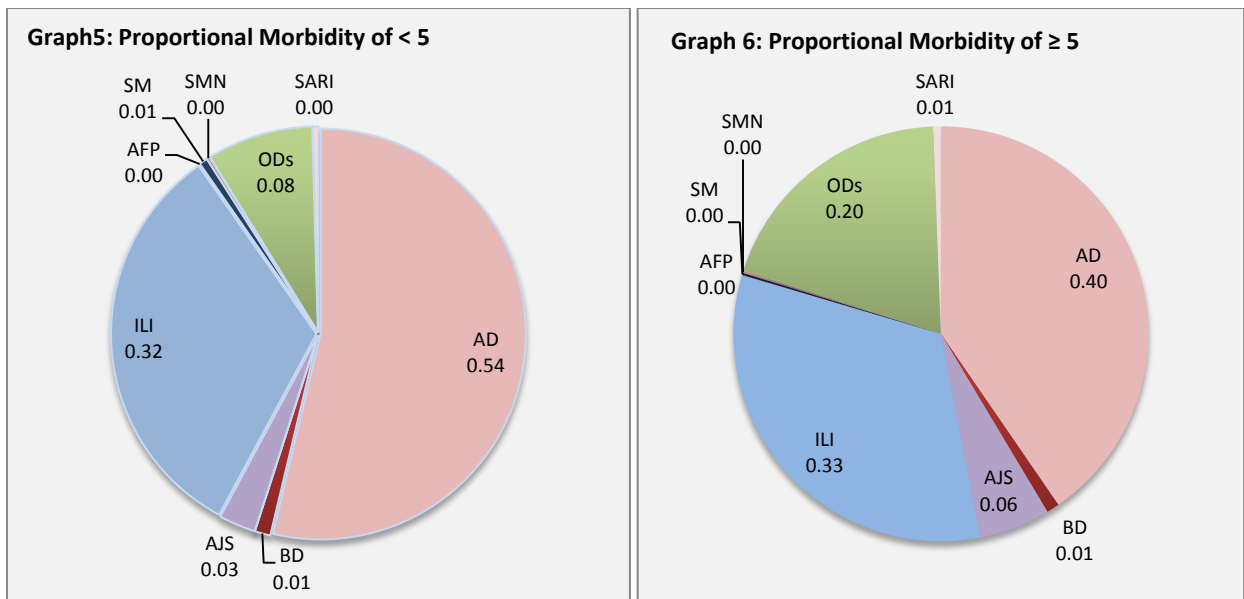
- ❖ Below chart reflects the trend in the number of suspected measles cases between week 1 and week 32 (2014)



- ❖ Below graph (4) reflects the trend in the number of Pertussis, Typhoid and suspected measles cases reported from DierEzor between week 1 and week 32 noting that a very low number of sites have reported during this week due to Eid vacation.



- ❖ In total, 1568 cases were reported as “other diseases”. The most important diseases reported within this group were: 167 cases of Brucellosis (most of which were reported from Rural Damascus 26%), 166 cases of Typhoid (most of which were reported from DierEzor 71%), 162 cases of Leishmaniasis (most of which were reported from Aleppo 48%), 108 cases of Pertussis (most of which were reported from DierEzor 88%), and 15 case of TB.
- ❖ 53% of the cases were distributed among ≥ 5 age group.
- ❖ The most common cases among <5 : AD cases were (54%) and ILI (32%). Graphs 6 and 7 below show the proportional morbidity among < 5 and ≥ 5 year age groups respectively.
- ❖ 52% of the cases were reported among males.



■ The Response

AFP: Stool samples were collected from the 4 AFP cases detected and sent to the reference lab in Damascus. The new round of vaccination campaign will be implemented between 31st August and 4th September.

Measles: the measles vaccination campaign has been implemented starting from 15 till 23 June 2014; this is in addition to supporting of routine vaccination programs. Further outreach by health partners to better respond to this outbreak is required.

Meningitis: Meningitis cases detected are not clustered. Cases were managed properly; and investigation forms were filled for some cases but not all; it shows that most of the cases are viral meningitis not bacterial. Preventive therapy was provided as necessary for contacts of the probable bacterial meningitis cases.

BD: cases are not clustered. All cases were managed properly.

Other response measures were also taken with regard to case management of Leishmaniasis, Hepatitis, TB and BRU cases. In addition to ensuring the availability of medicines and the implementation of sanitation measures in accordance with available capacity.

Table-1: Distribution of cases per age group, and by Governorate-week-32, 2014:

Code	Age group	Sweida	Hamah	Daraa	Aleppo	Damascus	DierEzor	Idleb	Homs	Lattakia	Rural Damascus	Tartous	Qunaitra	Raqua	Hassaka	Grand Total	
AD	< 5	181	132	134	117	353	633	48	18	490	249	124	86	193	29	2787	5139
	≥ 5	170	142	97	125	404	524	43	12	263	207	185	81	82	17	2352	
BD	< 5	11	0	0	0	7	22	0	0	8	9	0	2	3	2	64	122
	≥ 5	7	0	0	0	9	9	0	0	16	6	0	3	0	8	58	
AWD	< 5	0	0	0	0	0	0	0	0	0	0	0	0	0	0	0	0
	≥ 5	0	0	0	0	0	0	0	0	0	0	0	0	0	0	0	
AJS	< 5	1	10	20	31	14	20	10	1	11	13	1	4	10	4	150	472
	≥ 5	7	31	13	26	59	84	27	6	13	27	0	11	15	3	322	
ILI	< 5	194	86	92	17	255	295	40	0	240	152	163	59	59	29	1681	3578
	≥ 5	246	94	85	51	227	342	44	0	141	186	279	152	29	21	1897	
AFP	< 5	1	0	0	0	0	1	0	0	0	0	0	0	0	0	2	4
	≥ 5	0	1	0	0	0	0	0	0	1	0	0	0	0	0	2	
SM	< 5	0	0	0	0	12	16	1	0	5	0	0	0	0	0	34	44
	≥ 5	0	0	0	0	1	8	0	0	0	0	0	0	1	0	10	
SMN	< 5	2	5	0	0	4	0	1	0	1	0	0	0	0	0	13	21
	≥ 5	0	3	0	0	4	1	0	0	0	0	0	0	0	0	8	
SARI	< 5	5	9	0	0	7	1	0	0	0	0	0	0	1	0	23	58
	≥ 5	4	9	0	0	22	0	0	0	0	0	0	0	0	0	35	
Others	< 5	2	11	25	112	58	57	0	4	3	98	5	42	16	0	433	1568
	≥ 5	13	93	95	151	220	245	11	15	23	195	25	43	6	0	1135	
Total < 5		397	253	271	277	710	1045	100	23	758	521	293	193	282	64	5187	11006
Total ≥ 5		447	373	290	353	946	1213	125	33	457	621	489	290	133	49	5819	
Total		844	626	561	630	1656	2258	225	56	1215	1142	782	483	415	113	11006	