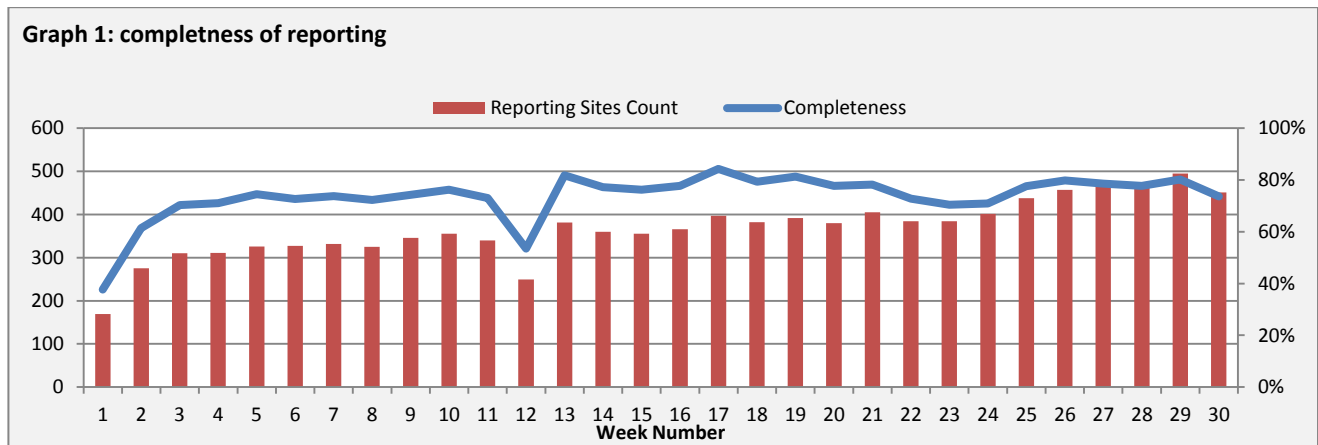


Highlights:

- ❖ 1 AWD case was detected in Sweida (1 case).

*** Completeness & Timeliness of Reporting**

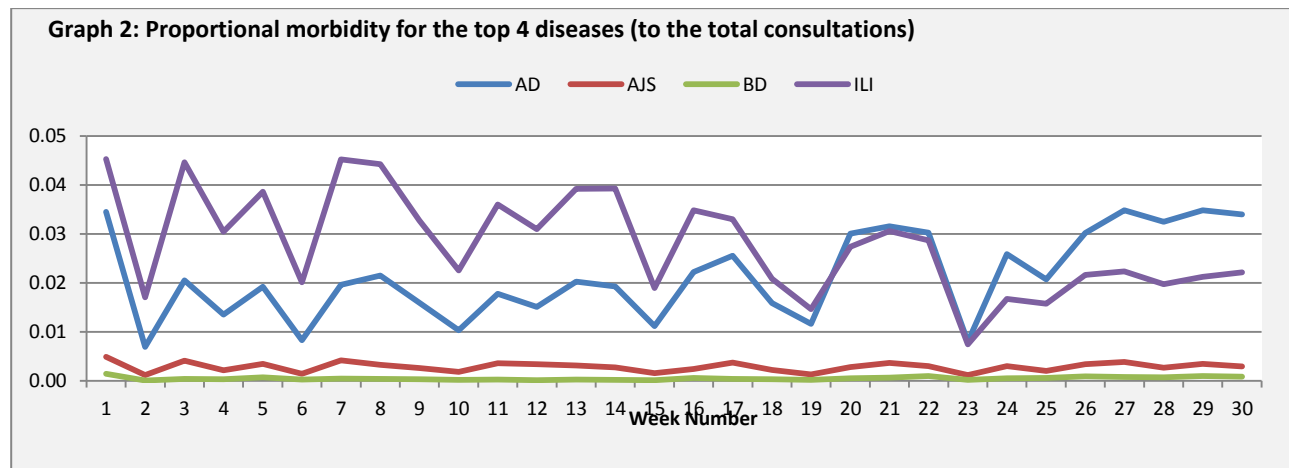
- ❖ The overall completeness of reporting was 74%; (451 out of total 613 EWARS sentinel sites). (See Graph 1). 14 governorates have reported this week.



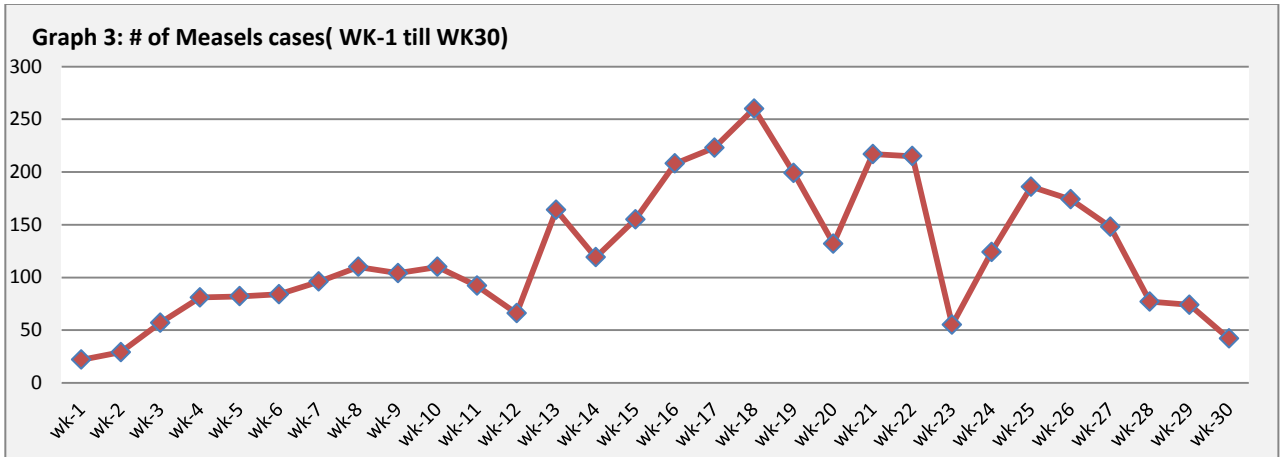
- ❖ Timeliness of reporting is 92%.

❖ The Morbidity Cases

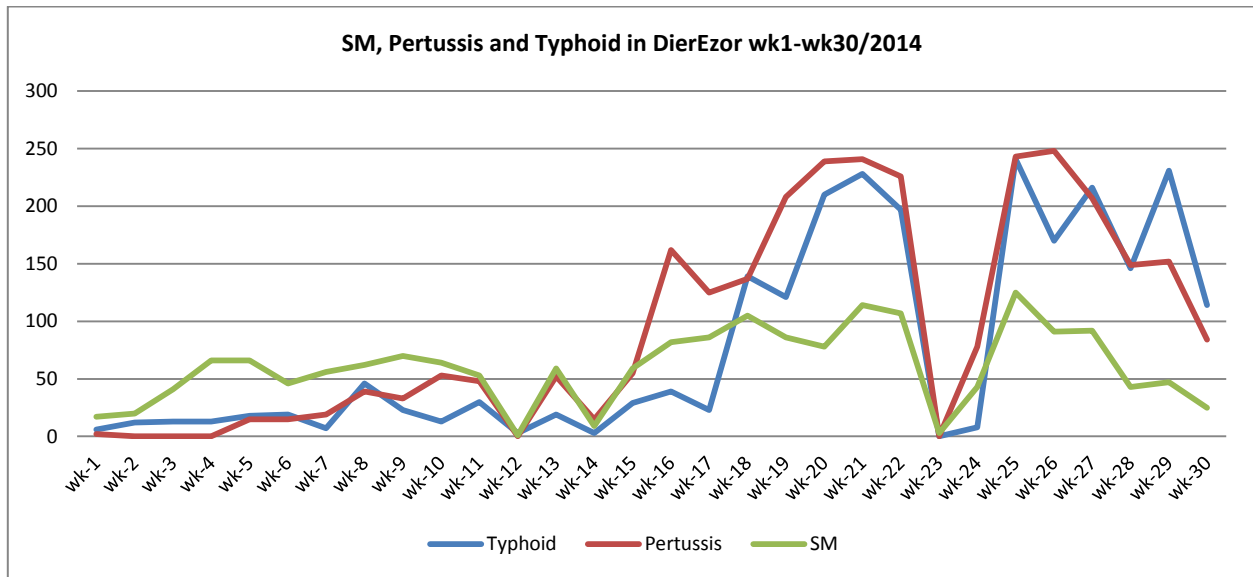
Out of the 129,139 total consultations, a total of 9,693 cases were reported; of which 4,734 cases were Acute Diarrhoea (49%), and 3,002 cases were Influenza like Illness (31%), 452 cases of AJS, 138 cases of Bloody Diarrhoea, 60 cases of Sever Acute Respiratory Infection, 42 cases of Suspected Measles, 20 cases of Meningitis, 1 cases of AWD. (Graph 2 shows the proportional morbidity for the top 4 diseases (to the total consultations, after excluding the data of 59 health facilities that did not report total consultations)).



- ❖ Below chart reflects the trend in the number of suspected measles cases between week 1 and week 30 (2014)



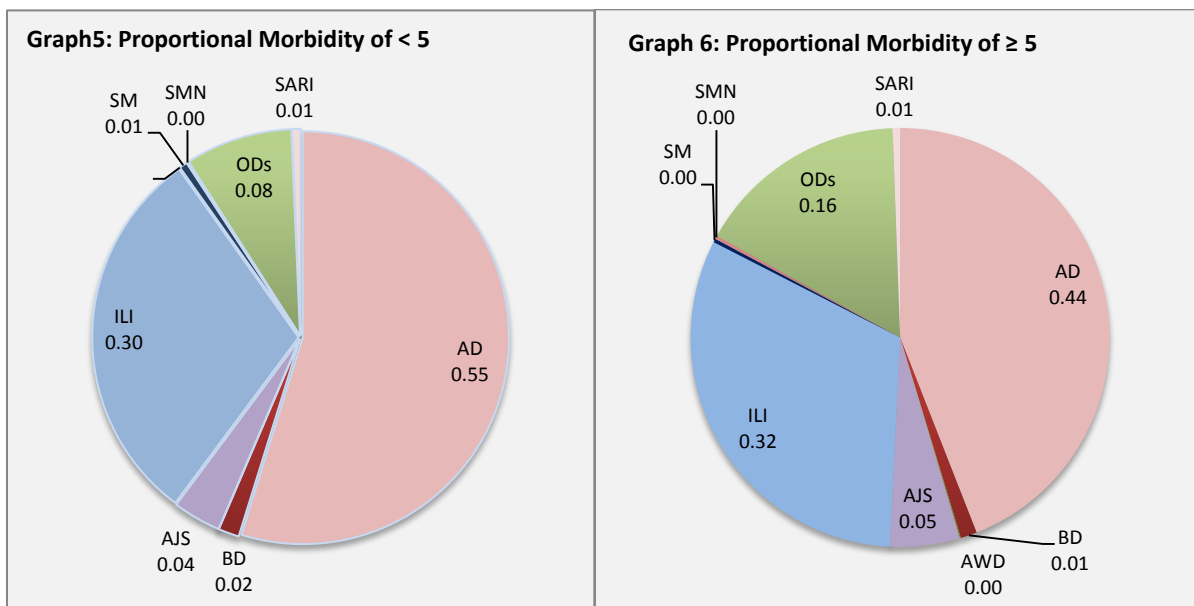
- ❖ Below graph (4) reflects the trend in the number of Pertussis, Typhoid and suspected measles cases reported from DierEzor between week 1 and week 30 noting that a very low number of sites have reported during week 23 due to poor communication.



- ❖ In total, 1,244 cases were reported as “other diseases”. The most important diseases reported within this group were: 148 cases of Brucellosis (most of which were reported from DierEzor 36%),138 cases of Typhoid (most of which were reported from DierEzor 83%),113 cases of Leishmaniasis (most of which were reported from Hamah 27%), 90 cases of Pertussis (most of which were reported from DierEzor 93%), and 16 cases of TB.

- ❖ 56% of the cases were distributed among ≥ 5 age group.

- ❖ The most common cases among <5: AD cases were (55%) and ILI (30%). Graphs 6 and 7 below show the proportional morbidity among < 5 and ≥ 5 year age groups respectively.
- ❖ 51% of the cases were reported among males.



❖ The Response

AWD: Stool samples were collected from the AWD case in Sweida and tested for vibrio Cholera. The lab result was negative.

Measles: the measles vaccination campaign has been implemented starting from 15 till 23 June 2014; this is in addition to supporting of routine vaccination programs. Further outreach by health partners to better respond to this outbreak is required.

Meningitis: Meningitis cases detected are not clustered. Cases were managed properly; and investigation forms were filled for some cases but not all; it shows that most of the cases are viral meningitis not bacterial. Preventive therapy was provided as necessary for contacts of the probable bacterial meningitis cases.

BD: cases are not clustered. All cases were managed properly.

Other response measures were also taken with regard to case management of Leishmaniasis, Hepatitis, TB and BRU cases. In addition to ensuring the availability of medicines and the implementation of sanitation measures in accordance with available capacity.

Table-1: Distribution of cases per age group, and by Governorate-week-30, 2014:

Code	Age group	Sweida	Hamah	Daraa	Aleppo	Damascus	DierEzor	Idleb	Homs	Lattakia	Rural Damascus	Tartous	Qunaitra	Raqua	Hassaka	Grand Total	
AD	< 5	197	114	48	160	390	627	53	15	100	308	74	66	130	75	2357	4734
	≥ 5	203	99	21	207	427	716	73	21	65	271	120	84	48	22	2377	
BD	< 5	8	0	0	0	5	22	0	0	2	13	1	8	7	4	70	138
	≥ 5	9	0	0	1	10	9	1	0	4	15	0	12	0	7	68	
AWD	< 5	0	0	0	0	0	0	0	0	0	0	0	0	0	0	0	1
	≥ 5	1	0	0	0	0	0	0	0	0	0	0	0	0	0	1	
AJS	< 5	0	6	7	16	21	26	13	15	1	33	0	5	15	4	162	452
	≥ 5	5	23	0	15	35	79	28	17	7	43	13	11	12	2	290	
ILI	< 5	141	38	5	37	253	334	50	17	66	105	151	47	4	41	1289	3002
	≥ 5	212	93	4	59	234	427	50	33	86	138	250	75	2	50	1713	
AFP	< 5	0	0	0	0	0	0	0	0	0	0	0	0	0	0	0	0
	≥ 5	0	0	0	0	0	0	0	0	0	0	0	0	0	0	0	
SM	< 5	0	0	0	1	7	15	0	1	0	0	0	0	2	1	27	42
	≥ 5	0	0	0	0	0	10	2	0	0	0	0	1	2	0	15	
SMN	< 5	1	1	0	0	2	0	0	1	0	0	0	0	1	0	6	20
	≥ 5	0	6	0	0	1	0	0	0	0	0	0	0	6	1	14	
SARI	< 5	3	10	0	0	6	1	8	0	0	0	0	0	1	0	29	60
	≥ 5	1	4	0	0	24	0	1	0	0	0	0	0	1	0	31	
Others	< 5	5	9	4	17	65	66	2	6	9	73	0	102	1	2	361	1244
	≥ 5	12	81	10	62	174	235	1	51	22	140	7	83	3	2	883	
Total < 5		355	178	64	231	749	1091	126	55	178	532	226	228	161	127	4301	9693
Total ≥ 5		443	306	35	344	905	1476	156	122	184	607	390	266	74	84	5392	
Total		798	484	99	575	1654	2567	282	177	362	1139	616	494	235	211	9693	