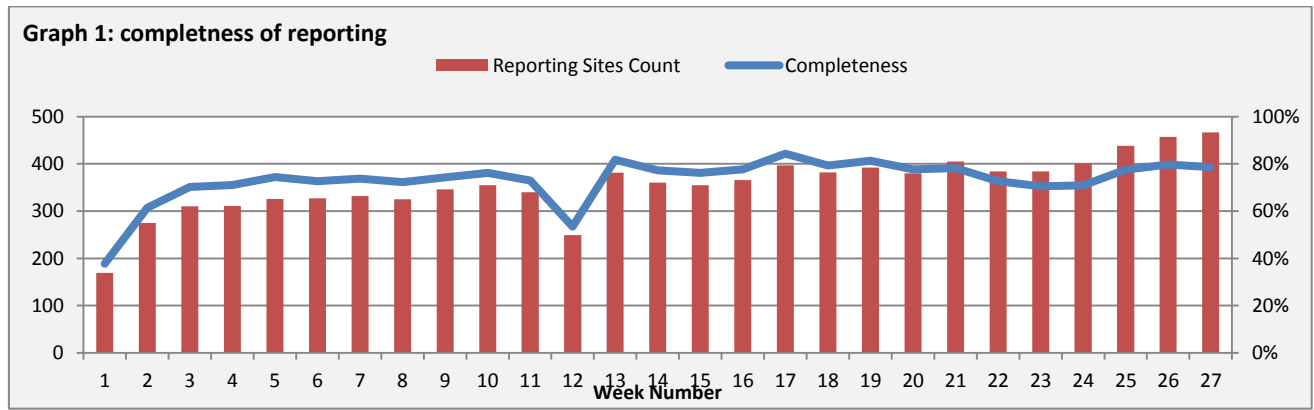


Highlights:

- ❖ 4 AFP cases were detected in Damascus, Lattakia, Homs and Sweida.
- ❖ 2 AWD case was detected in DierEzor.

❖ Completeness& Timeliness of Reporting

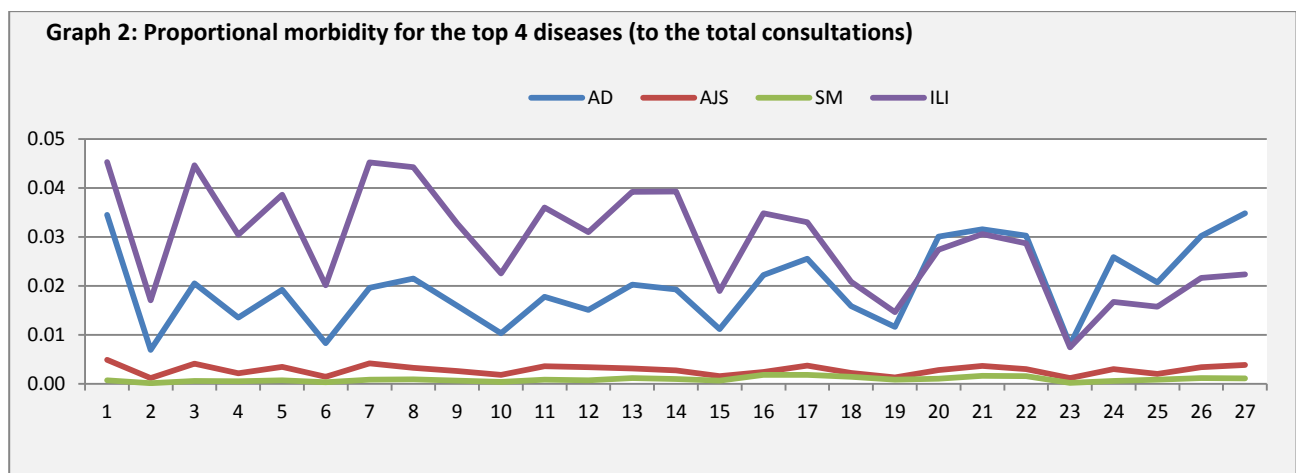
- ❖ The overall completeness of reporting was 79%; (467 out of total 594 EWARS sentinel sites). (See Graph 1). 14 governorates have reported this week.



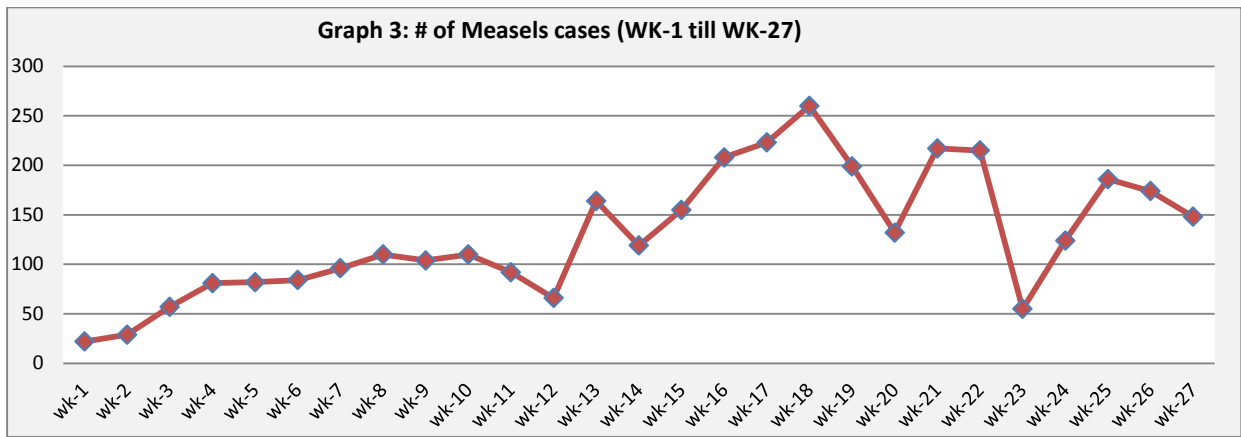
- ❖ Timeliness of reporting is 57%.

❖ The Morbidity Cases

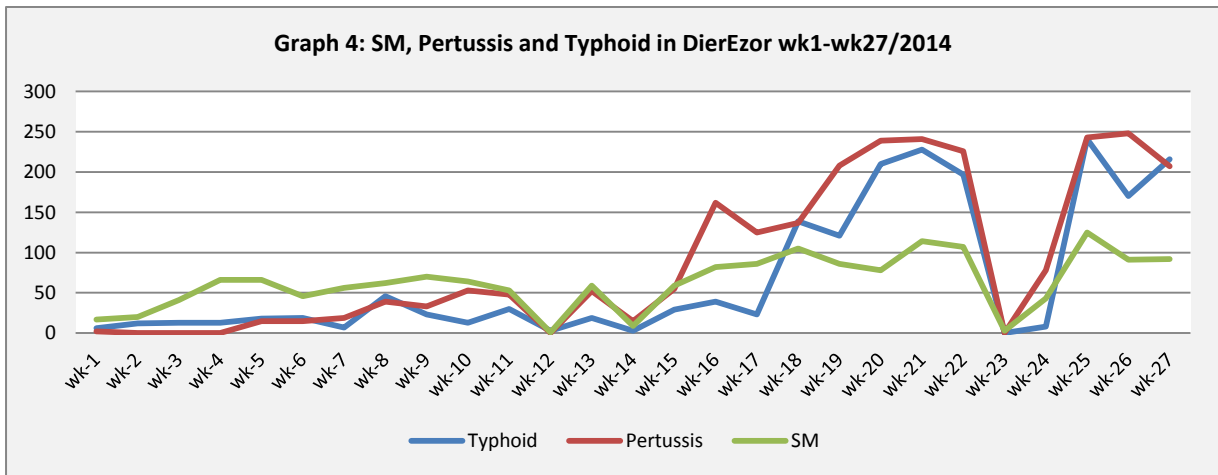
Out of the 124,236 total consultations, a total of 10,158 cases were reported; of which 4,771 cases were Acute Diarrhoea (47%), and 2,907 cases were Influenza like Illness (29%), 539 cases of AJS, 148 cases of Suspected Measles, 104 cases of Bloody Diarrhoea, 80 cases of Sever Acute Respiratory Infection, 34 cases of Meningitis, 4 cases of AFP and 2 case of AWD. (Graph 2 shows the proportional morbidity for the top 4 diseases (to the total consultations, after excluding the data of 76 health facilities that did not report total consultations).



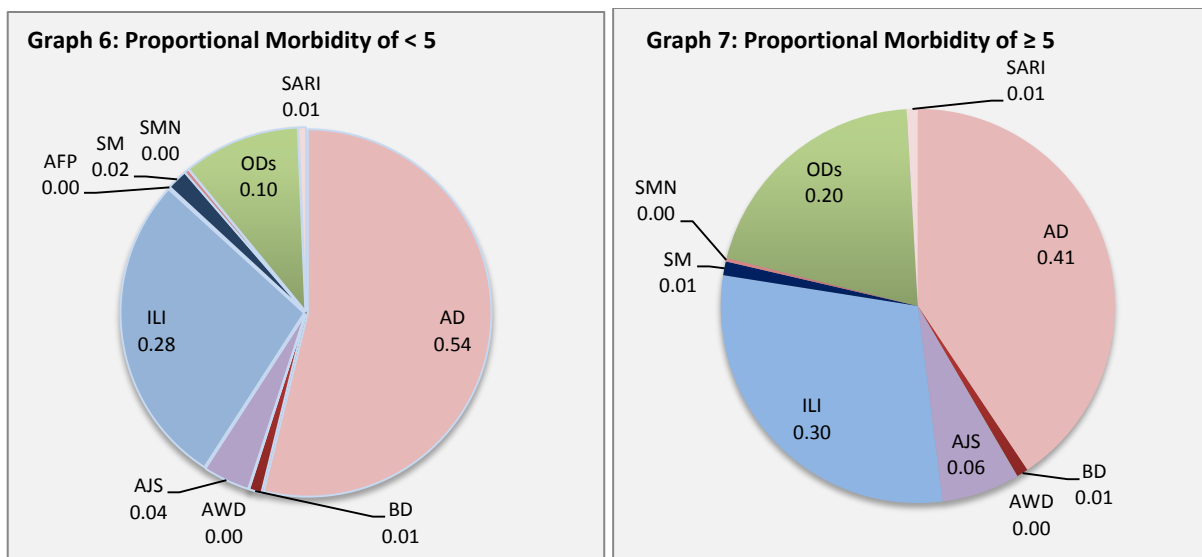
- ❖ Below chart reflects the trend in the number of suspected measles cases between week 1 and week 27 (2014)



- ❖ In total, 1,569 cases were reported as “other diseases”. The most important diseases reported within this group were: 257 cases of Typhoid (most of which were reported from DierEzor 84%), 249 cases of Pertussis (most of which were reported from DierEzor 83%), 169 cases of Brucellosis (most of which were reported from DierEzor 35%), 120 cases of Leishmaniasis (most of which were reported from Aleppo 32%), and 21 cases of TB.
- ❖ Below graph (4) reflects the trend in the number of Pertussis, Typhoid and suspected measles cases reported from DierEzor between week 1 and week 27 noting that a very low number of sites have reported during week 23 due to poor communication.



- ❖ 52% of the cases were distributed among ≥ 5 age group.
- ❖ The most common cases among <5 : AD cases were (54%) and ILI (28%). Graphs 6 and 7 below show the proportional morbidity among < 5 and ≥ 5 year age groups respectively.
- ❖ 51% of the cases were reported among males.



❖ The Response

AFP: Stool samples were collected from the AFP case and sent to the reference lab in Damascus. Polio vaccination campaign has been implemented between 15th and 19th of June.

Measles: the measles vaccination campaign has been implemented starting from 15 till 23 June 2014; this is in addition to supporting of routine vaccination programs. Further outreach by health partners to better respond to this outbreak is required.

AWD: The two cases were not related and they were managed properly.

Typhoid and other water borne diseases: a mass media campaign to raise population awareness on simple method for water decontamination, safe food handling and hand hygiene.

Meningitis: Meningitis cases detected are not clustered. Cases were managed properly; and investigation forms were filled for some cases but not all; it shows that most of the cases are viral meningitis not bacterial. Preventive therapy was provided as necessary for contacts of the probable bacterial meningitis cases.

Other response measures were also taken with regard to case management of Leishmaniasis, Hepatitis, TB and BRU cases. In addition to ensuring the availability of medicines and the implementation of sanitation measures in accordance with available capacity.

Table-1: Distribution of cases per age group, and by Governorate-week-27, 2014:

Code	Age group	Sweida	Hamah	Daraa	Aleppo	Damascus	DierEzor	Idleb	Homs	Lattakia	Rural Damascus	Tartous	Qunaitra	Raqua	Hassaka	Grand Total	
AD	< 5	156	148	155	263	437	406	86	20	296	224	99	35	274	20	2619	4771
	≥ 5	141	122	95	233	372	409	69	19	168	235	120	46	115	8	2152	
BD	< 5	3	1	1	0	8	16	0	0	11	2	1	2	9	0	54	104
	≥ 5	4	0	2	0	7	16	0	0	8	0	0	6	5	2	50	
AWD	< 5	0	0	0	0	0	2	0	0	0	0	0	0	0	0	2	2
	≥ 5	0	0	0	0	0	0	0	0	0	0	0	0	0	0	0	
AJS	< 5	3	15	10	5	13	37	65	4	19	14	0	4	11	0	200	539
	≥ 5	1	88	13	7	56	36	50	7	25	24	1	8	23	0	339	
ILI	< 5	75	49	59	8	250	307	56	6	148	126	161	47	52	0	1344	2907
	≥ 5	111	51	46	8	242	368	54	14	96	208	254	78	33	0	1563	
AFP	< 5	1	0	0	0	1	0	0	1	1	0	0	0	0	0	4	4
	≥ 5	0	0	0	0	0	0	0	0	0	0	0	0	0	0	0	
SM	< 5	0	3	1	1	7	43	7	0	5	5	0	1	15	0	88	148
	≥ 5	0	3	1	0	0	49	2	0	0	4	0	0	1	0	60	
SMN	< 5	0	7	0	0	2	0	1	1	0	0	0	1	7	0	19	34
	≥ 5	0	0	0	0	5	0	0	0	1	0	0	0	9	0	15	
SARI	< 5	3	19	0	0	5	0	5	0	0	0	0	0	0	0	32	80
	≥ 5	3	22	0	0	21	0	1	0	0	1	0	0	0	0	48	
ODs	< 5	0	13	15	42	32	116	2	5	19	138	7	63	48	0	500	1569
	≥ 5	6	44	45	49	139	401	0	43	26	198	23	84	11	0	1069	
Total < 5		241	255	241	319	755	927	222	37	499	509	268	153	416	20	4862	10158
Total ≥ 5		266	330	202	297	842	1279	176	83	324	670	398	222	197	10	5296	
Total		507	585	443	616	1597	2206	398	120	823	1179	666	375	613	30	10158	