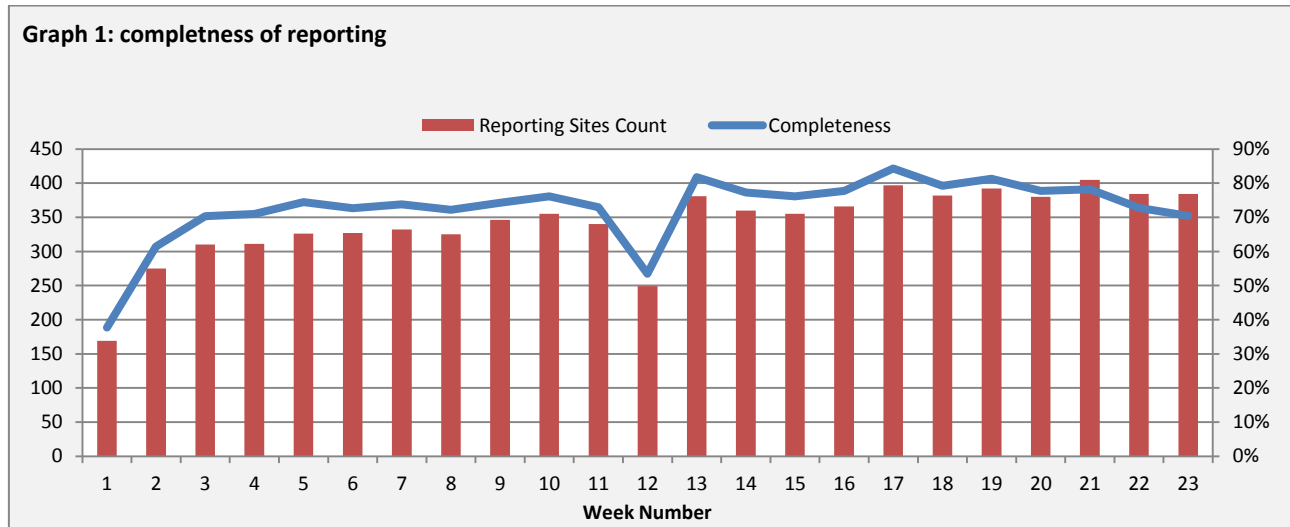


**Highlights:**

- ❖ 4 AFP cases were detected, 3 in Lattakia and 1 in Damascus.
- ❖ New sentinel sites include private health care providers (clinics and hospitals) and NGOs health facilities were added to the system.

**❖ Completeness& Timeliness of Reporting**

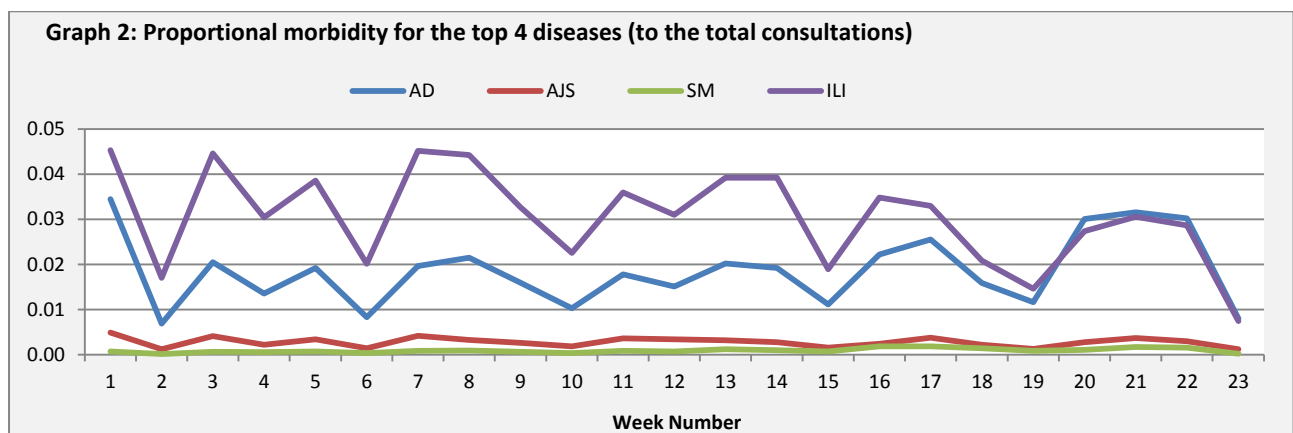
The overall completeness of reporting was 70 %; (384 out of total 545 EWARS sentinel sites). (See Graph 1). 14 governorates have reported this week



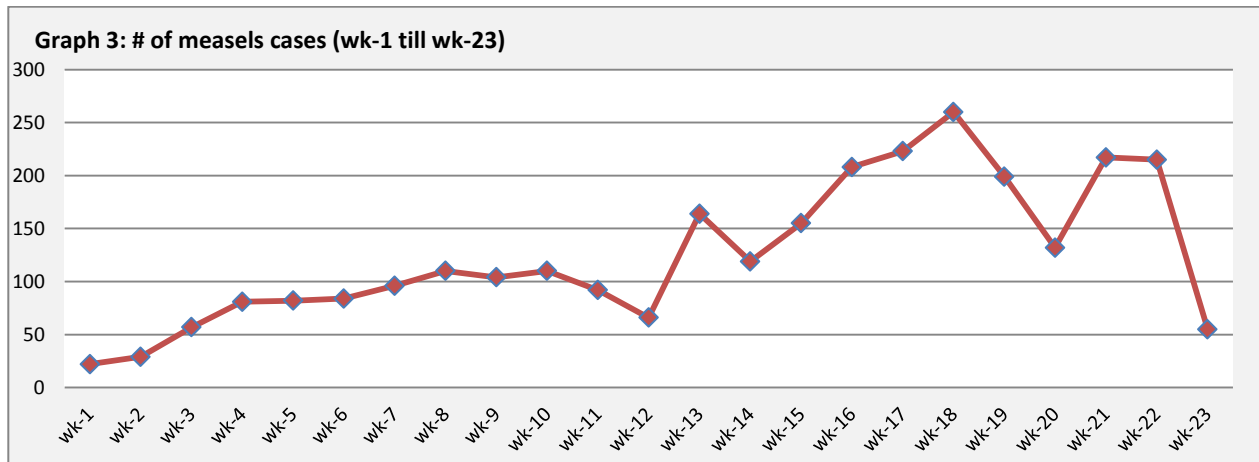
- ❖ Timeliness of reporting is 99%.

**❖ The Morbidity Cases**

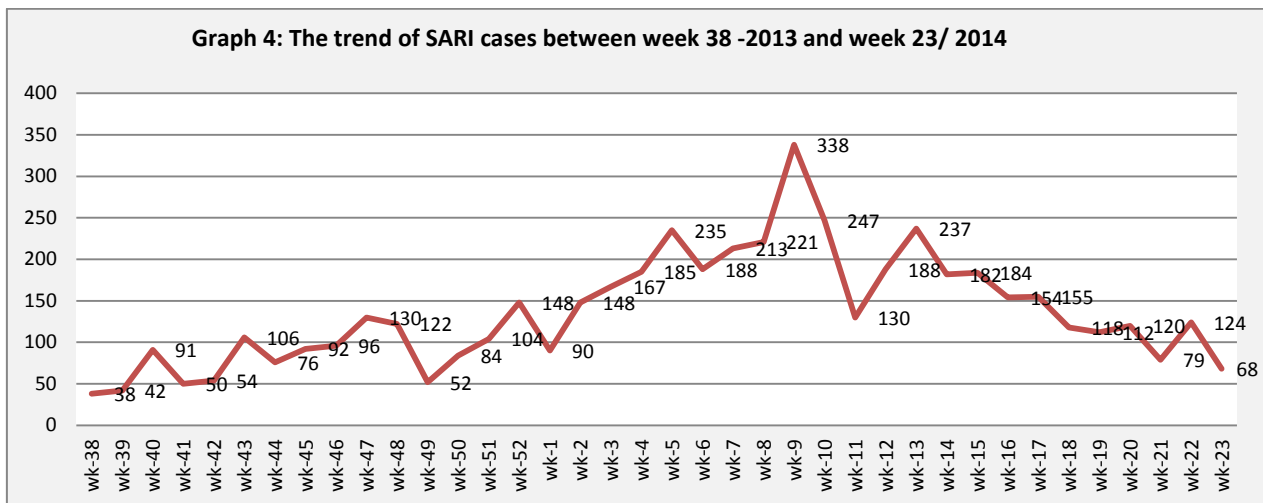
Out of the 324,634 total consultations, a total of 7,734 cases were reported; of which 2,838 cases were Acute Diarrhoea (37%), and 2,772 cases were Influenza like Illness (36%), 499 cases of AJS, 68 cases of Sever Acute Respiratory Infection, 58 cases of Bloody Diarrhoea, 55 cases of Suspected Measles, 43 cases of Meningitis, and 4 AFP cases. (Graph 2 shows the proportional morbidity for the top 4 diseases (to the total consultations, after excluding the data of 66 health facilities that did not report total consultations).



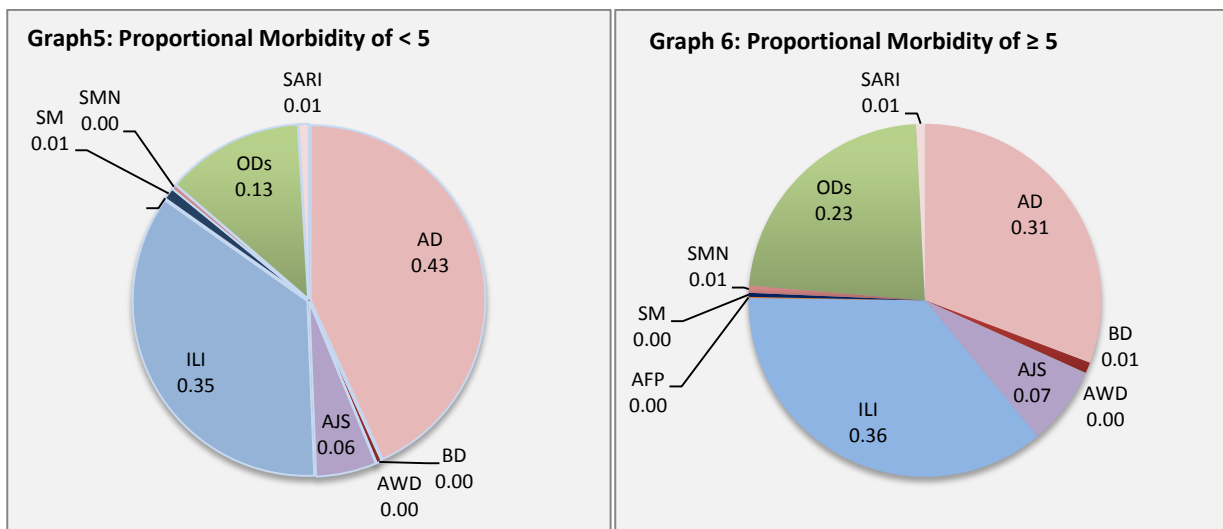
- ❖ The number of suspected measles cases dropped this week due to the reduction in the number of sites reporting from DierEzor where high number of cases used to be reported. This was due to poor internet connection and disruption of access to the health facilities in the area which caused by the evolving situation on Iraqi border (See graph 3 below).



- ❖ Below chart describes the trend of SARI cases between week 38, 2013 and week 23, 2014



- ❖ In total, 1394 cases were reported as “other diseases”. The most important diseases reported within this group were: 95 cases of Brucellosis (most of which were reported from Rural Damascus 32%), 87 cases of Leishmaniasis (most of which were reported from Hama 39%), 29 cases of Typhoid, 15 cases of Pertussis, and 10 cases of TB.
- ❖ 52% of the cases were distributed among  $\geq 5$  age group.
- ❖ The most common cases among  $<5$ : AD cases were (43%) and ILI (35%). Graphs 6 and 7 below show the proportional morbidity among  $< 5$  and  $\geq 5$  year age groups respectively.
- ❖ 51% of the cases were reported among males.



## ❖ The Response

**AFP:** Stool samples were collected from the AFP cases and sent to the reference lab in Damascus. The new round of vaccination campaign has been implemented between 6th and 10th of May through the global vaccination week.

**Typhoid:** distributing aqua tabs continues for disinfecting drinking water while working on the installation of the water purification units. These units will provide safe drinking water for approximately 40,000 people per day.

**Meningitis:** Meningitis cases detected are not clustered. Cases were managed properly; and investigation forms were filled for some cases but not all; it shows that most of the cases are viral meningitis not bacterial. Preventive therapy was provided as necessary for contacts of the probable bacterial meningitis cases.

**BD:** cases are not clustered. All cases were managed properly.

Other response measures were also taken with regard to case management of Leishmaniasis, Hepatitis, TB and BRU cases. In addition to ensuring the availability of medicines and the implementation of sanitation measures in accordance with available capacity.

**Table-1: Distribution of cases per age group, and by Governorate-week-23, 2014:**

Code	Age group	Sweida	Hamah	Daraa	Aleppo	Damascus	DierEzor	Idleb	Homs	Lattakia	Rural Damascus	Tartous	Qunaitra	Raqua	Hassaka	Grand Total	
AD	< 5	146	123	194	62	432	10	69	54	111	132	43	78	96	41	1591	2838
	≥ 5	85	110	103	53	336	18	64	56	73	118	62	91	52	26	1247	
BD	< 5	0	0	1	0	7	3	0	0	2	0	0	2	2	1	18	58
	≥ 5	5	0	3	0	6	5	0	0	6	4	1	3	3	4	40	
AWD	< 5	0	1	0	0	0	0	0	0	0	0	0	0	1	0	2	3
	≥ 5	0	0	0	0	0	0	0	0	0	0	0	1	0	0	1	
AJS	< 5	9	11	10	3	17	0	45	63	8	14	1	11	14	0	206	499
	≥ 5	7	35	15	7	45	1	63	34	17	22	0	16	29	2	293	
ILI	< 5	99	53	127	32	277	4	56	37	174	131	172	108	33	1	1304	2772
	≥ 5	71	97	98	22	199	3	194	59	94	196	274	136	23	2	1468	
AFP	< 5	0	0	0	0	0	0	0	0	0	0	0	0	0	0	0	4
	≥ 5	0	0	0	0	1	0	0	0	3	0	0	0	0	0	4	
SM	< 5	1	4	0	1	4	2	2	0	4	0	0	1	19	2	40	55
	≥ 5	0	0	0	1	4	1	0	1	0	0	0	2	6	0	15	
SMN	< 5	1	3	0	1	1	0	1	0	0	1	0	0	7	1	16	43
	≥ 5	0	1	0	0	3	0	1	0	0	0	0	2	20	0	27	
SARI	< 5	5	15	0	0	15	0	0	0	0	0	0	0	0	0	35	68
	≥ 5	1	8	0	0	18	0	0	0	5	1	0	0	0	0	33	
Others	< 5	4	18	8	4	20	1	0	163	1	135	4	95	12	3	468	1394
	≥ 5	13	70	44	40	144	14	2	214	15	201	21	127	20	1	926	
Total < 5		265	228	340	103	773	20	173	317	300	413	220	295	184	49	3680	7734
Total ≥ 5		182	321	263	123	756	42	324	364	213	542	358	378	153	35	4054	
<b>Total</b>		<b>447</b>	<b>549</b>	<b>603</b>	<b>226</b>	<b>1529</b>	<b>62</b>	<b>497</b>	<b>681</b>	<b>513</b>	<b>955</b>	<b>578</b>	<b>673</b>	<b>337</b>	<b>84</b>	<b>7734</b>	