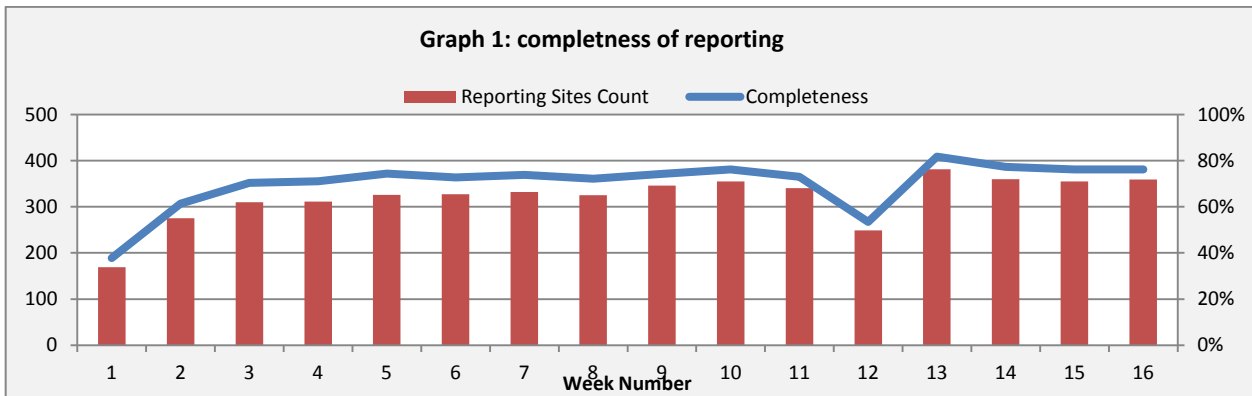


Highlights:

- ❖ 1 AFP case was detected in Sweida

❖ Completeness & Timeliness of Reporting

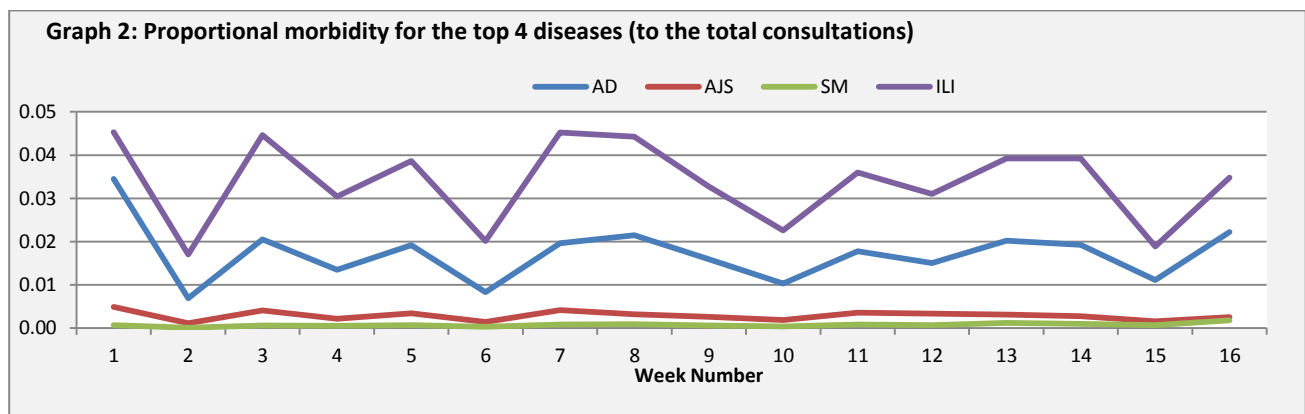
The overall completeness of reporting was 76%; (359 out of total 471 EWARS sentinel sites). (See Graph 1). 14 governorates have reported this week.



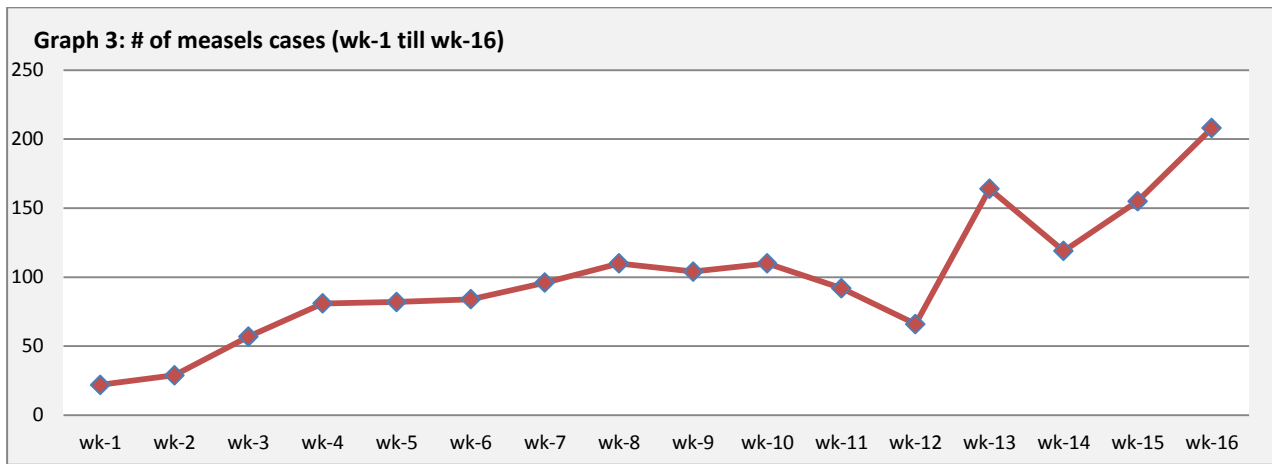
- ❖ Timeliness of reporting is 67%.

❖ The Morbidity Cases

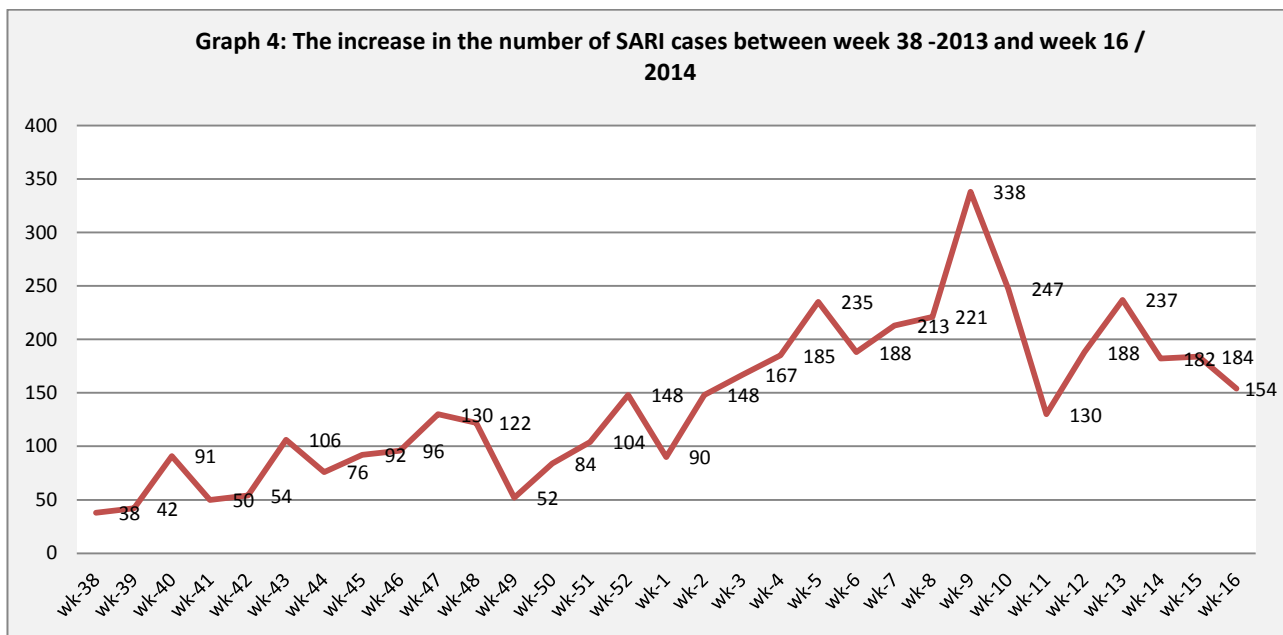
Out of the 113,291 total consultations, a total of 10,079 cases were reported; of which 4,434 cases were Influenza like Illness (44%) and 2,954 cases were Acute Diarrhoea (29%), 418 cases of AJS, 208 cases of Suspected Measles, 154 cases of Severe Acute Respiratory Infection, 66 cases of Bloody Diarrhoea, 15 cases of Meningitis, 2 AWD cases and 1 AFP case. (Graph 2 shows the proportional morbidity for the top 4 diseases (to the total consultations, after excluding the data of 50 health facilities that did not report total consultations)).



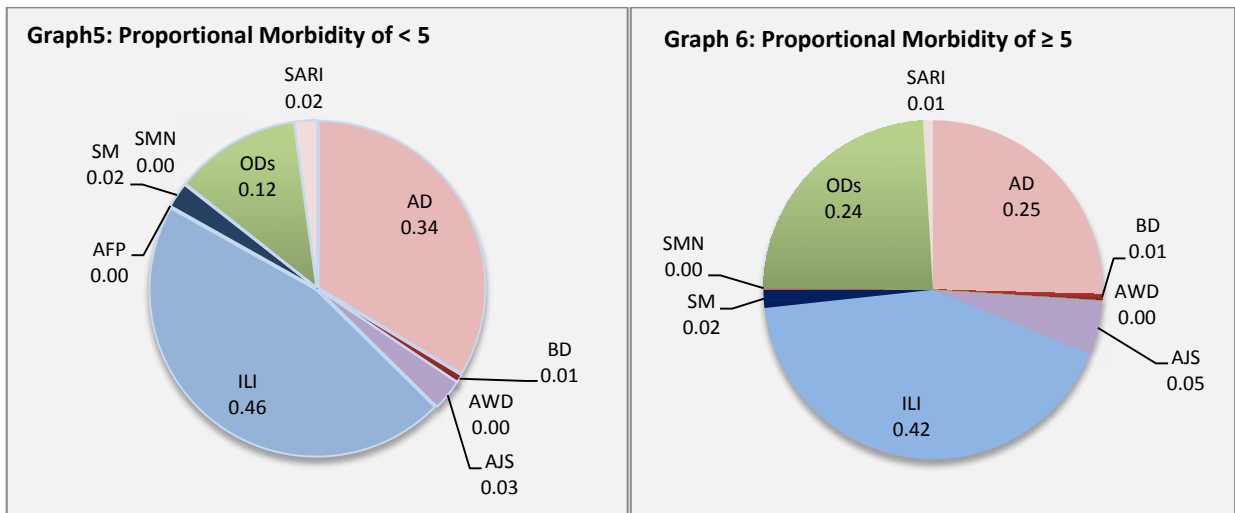
- ❖ A notable increase in the number of suspected measles cases has been reported also this week with Raqua governorate reporting the highest number of cases (See graph 3 below)



❖ The graph 4 below illustrate the trend of the decrease in SARI cases over the previous 16 weeks



- ❖ In total, 1843 cases were reported as “other diseases”. The most important diseases reported within this group were: 200 cases of Leishmaniasis (most of which were reported from Hamah 34%) 73 cases of Brucellosis (most of which were reported from Rural Damascus 29%), 59 cases of Typhoid (most of which were reported from DierEzor 66%) and 20 cases of TB.
- ❖ 52% of the cases were distributed among ≥ 5 age group.
- ❖ The most common cases among < 5 were ILI (46%) and AD cases (34%). Graphs 5 and 6 below show the proportional morbidity among < 5 and ≥ 5 year age groups respectively.
- ❖ 52% of the cases were reported among males.



❖ The Response

- ❖ **AFP:** Stool samples were collected from the AFP case and sent to the reference lab in Damascus. The vaccination campaign was implemented between 6 and 10 of April.
- ❖ **AWD:** The 2 cases reported were revealed to be acute diarrhoea
- ❖ **Measles:** Samples have been collected from some cases with investigation forms completed. MMR vaccines, among other vaccines, will be provided for the drop-out under 5 children during the coming national vaccination week (26 -30 April) in line with the global/regional vaccination week
- ❖ **Meningitis:** Meningitis cases detected are not clustered. Cases were managed properly; and investigation forms were filled for some cases but not all; it shows that most of the cases are viral meningitis not bacterial. Preventive therapy was provided as necessary for contacts of the probable bacterial meningitis cases.
- ❖ **BD:** cases are not clustered. All cases were managed properly.
- ❖ Other response measures were also taken with regard to case management of Leishmaniasis, Hepatitis, TB, TYF and BRU cases. In addition to ensuring the availability of medicines and the implementation of sanitation measures in accordance with available capacity.

Table-1: Distribution of cases per age group, and by Governorate-week-16, 2014

Code	Age group	Sweida	Hamah	Daraa	Aleppo	Damascus	DierEzor	Idleb	Homs	Lattakia	Rural Damascus	Tartous	Qunaitra	Raqua	Hassaka	Grand Total	
AD	< 5	104	124	79	244	297	292	22	57	90	136	30	21	72	40	1608	2954
	≥ 5	74	95	21	236	179	254	46	68	53	171	42	36	39	32	1346	
BD	< 5	3	0	0	0	23	5	0	0	5	0	0	0	0	0	36	66
	≥ 5	3	0	0	0	11	4	0	0	4	0	0	0	0	8	30	
AWD	< 5	0	0	0	0	1	0	0	0	0	0	0	0	0	0	1	2
	≥ 5	0	0	0	0	0	0	0	0	0	1	0	0	0	0	1	
AJS	< 5	5	2	1	17	17	20	21	21	22	14	0	0	4	0	144	418
	≥ 5	4	3	15	28	43	34	23	42	23	44	1	0	8	6	274	
ILI	< 5	150	85	99	358	327	249	46	54	234	215	203	124	21	42	2207	4434
	≥ 5	134	108	63	394	272	294	49	77	161	235	230	159	8	43	2227	
AFP	< 5	1	0	0	0	0	0	0	0	0	0	0	0	0	0	1	1
	≥ 5	0	0	0	0	0	0	0	0	0	0	0	0	0	0	0	
SM	< 5	0	6	1	2	4	43	3	0	0	0	0	0	57	0	116	208
	≥ 5	0	0	2	1	3	39	0	1	0	0	0	0	43	3	92	
SMN	< 5	1	3	0	0	0	0	0	0	0	0	0	0	0	0	4	15
	≥ 5	0	1	0	0	5	0	0	0	0	1	0	0	4	0	11	
SARI	< 5	2	31	0	0	65	0	0	0	1	5	0	0	0	0	104	154
	≥ 5	6	6	0	0	29	1	0	0	0	8	0	0	0	0	50	
Others	< 5	6	25	25	111	17	14	2	90	4	195	49	29	15	0	582	1845
	≥ 5	20	79	27	154	123	66	7	314	14	266	105	59	25	4	1263	
Total < 5		272	276	205	732	751	623	94	222	356	565	282	174	169	82	4803	10097
Total ≥ 5		241	292	128	813	665	692	125	502	255	726	378	254	127	96	5294	
Total		513	568	333	1545	1416	1315	219	724	611	1291	660	428	296	178	10097	