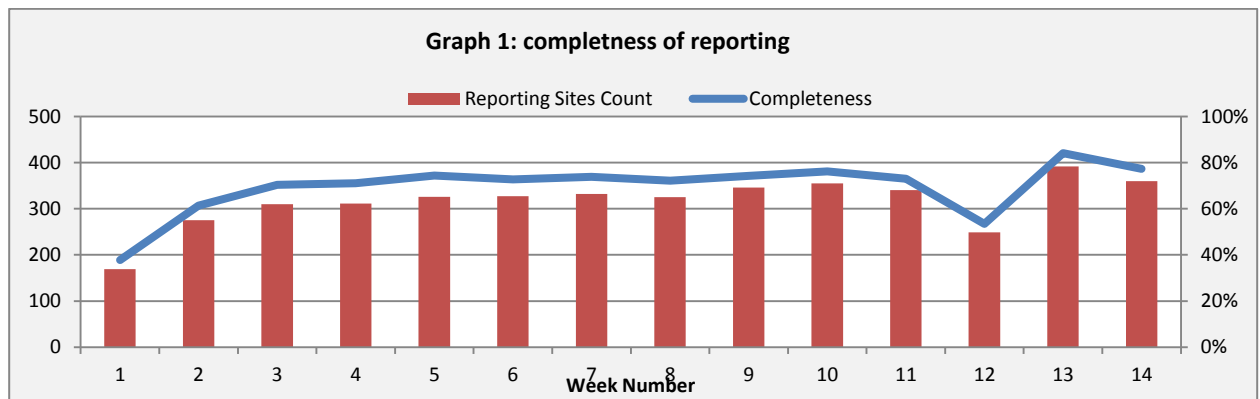


Highlights:

- ❖ 1 AFP case was detected in Hamah.

❖ Completeness & Timeliness of Reporting

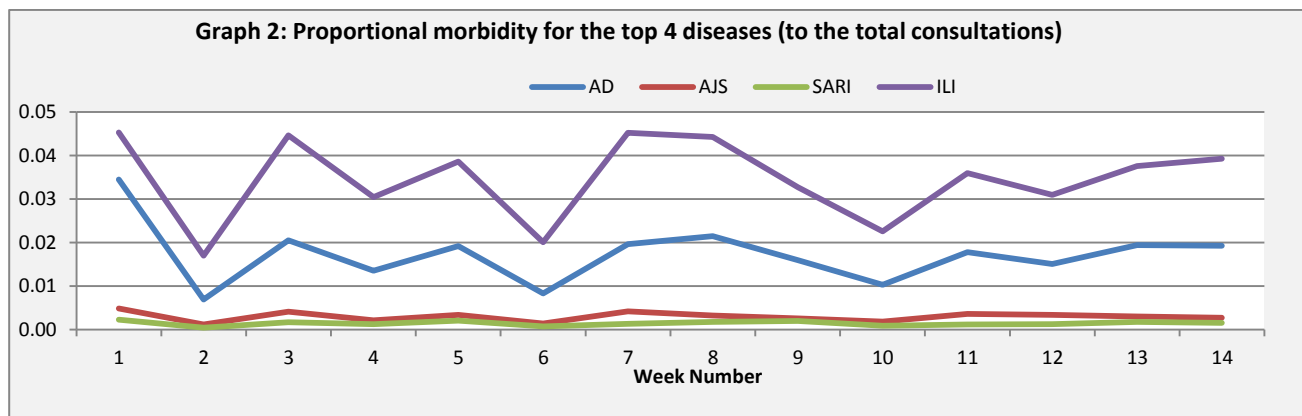
The overall completeness of reporting was 77%; (360 out of total 466 EWARS sentinel sites). (See Graph 1). 14 governorates have reported this week.



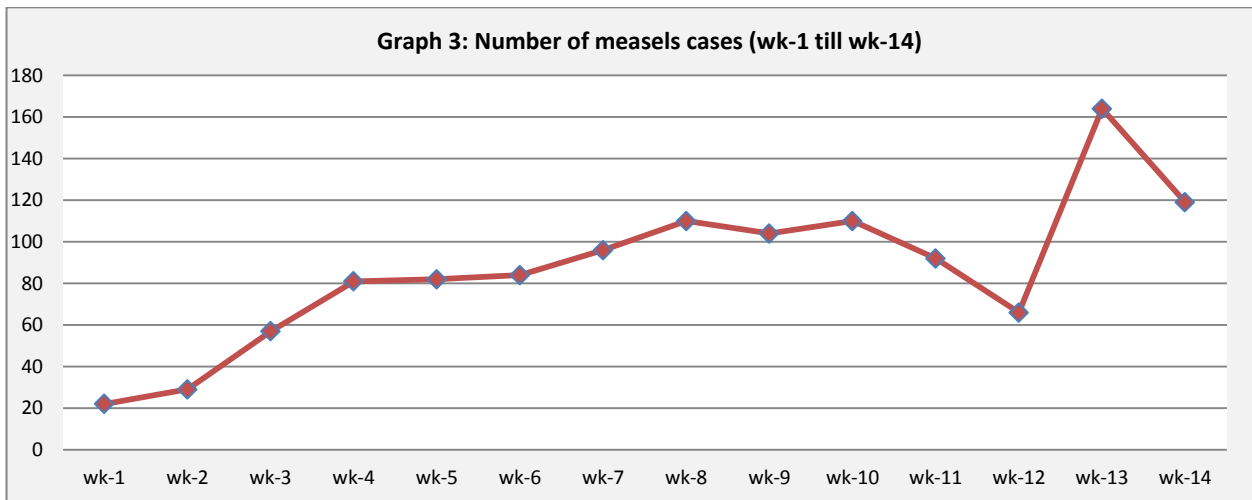
- ❖ Timeliness of reporting is 96%.

❖ The Morbidity Cases

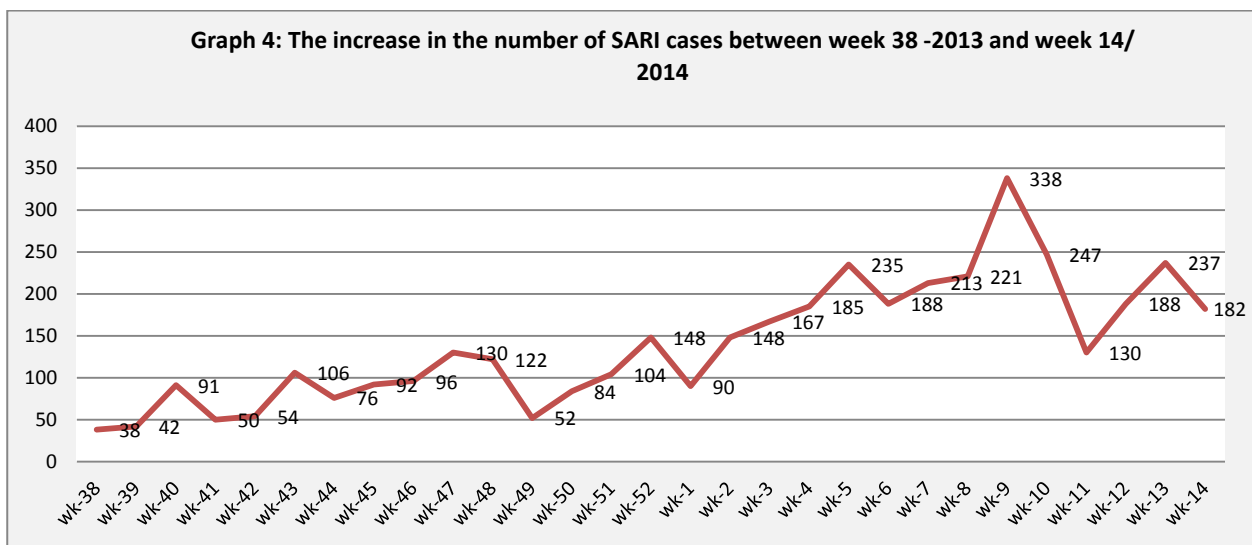
Out of the 115,009 total consultations, a total of 9,222 cases were reported; of which 4,795 cases were Influenza like Illness (52%) and 2,472 cases were Acute Diarrhoea (27%), 357 cases of AJS, 182 cases of Sever Acute Respiratory Infection, 119 cases of Suspected Measles, 37 cases of Bloody Diarrhoea, 18 cases of Meningitis, and, 1 AFP case. (Graph 2 shows the proportional morbidity for the top 4 diseases (to the total consultations, after excluding the data of 48 health facilities that did not report total consultations).



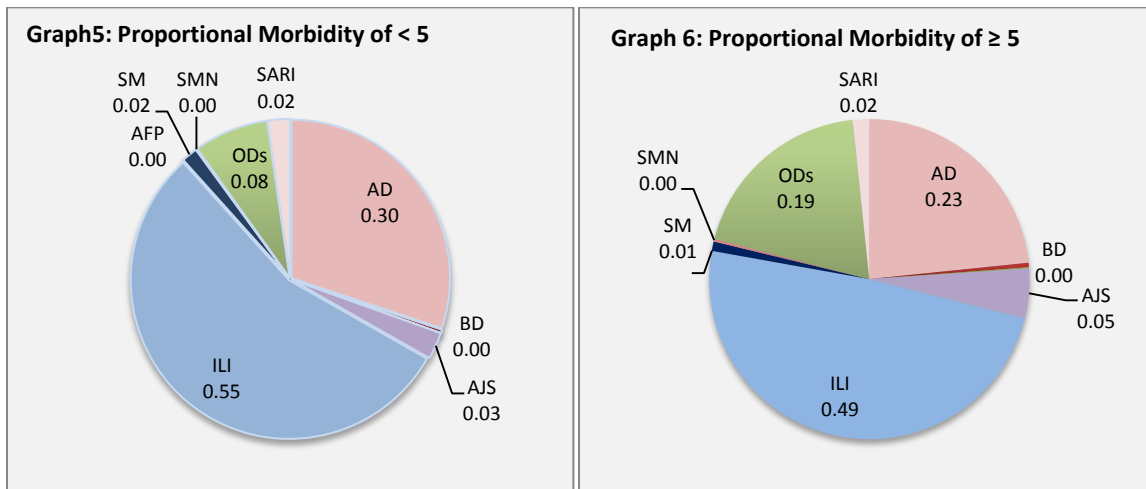
- ❖ Graph 3 below shows the trend of number of measles cases reported between week 1 and 14



❖ The graph 4 below illustrate the trend of the SARI cases over the previous 14 weeks



- ❖ In total, 1241 cases were reported as “other diseases”. The most important diseases reported within this group were: 216 cases of Leishmaniasis (most of which were reported from Hamah 49%) 65 cases of Brucellosis, 16 cases of Typhoid and 14 cases of TB.
- ❖ 54% of the cases were distributed among ≥ 5 age group.
- ❖ The most common cases among < 5 were ILI (55%) and AD cases (30%). Graphs 5 and 6 below show the proportional morbidity among < 5 and ≥ 5 year age groups respectively.
- ❖ 51% of the cases were reported among males.



❖ The Response

- ❖ **AFP:** Stool samples were collected from the AFP case and sent to the reference lab in Damascus. The vaccination campaign will be implemented between 6 and 10 of April.
- ❖ **Measles:** Samples have been collected from some cases with investigation forms completed. MMR vaccines, among other vaccines, will be provided for the drop-out under 5 children during the coming national vaccination week (26 -30 April) in line with the global/regional vaccination week
- ❖ **Meningitis:** Meningitis cases detected are not clustered. Cases were managed properly; and investigation forms were filled for some cases but not all; it shows that most of the cases are viral meningitis not bacterial. Preventive therapy was provided as necessary for contacts of the probable bacterial meningitis cases.
- ❖ **BD:** cases are not clustered. All cases were managed properly.
- ❖ Other response measures were also taken with regard to case management of Leishmaniasis, Hepatitis, TB and BRU cases. In addition to ensuring the availability of medicines and the implementation of sanitation measures in accordance with available capacity.

Table-1: Distribution of cases per age group, and by Governorate-week-14, 2014

Code	Age group	Sweida	Hamah	Daraa	Aleppo	Damascus	DierEzor	Idleb	Homs	Lattakia	Rural Damascus	Tartous	Qunaitra	Raqua	Hassaka	Grand Total	
AD	< 5	104	126	86	231	282	41	56	49	102	93	74	17	38	90	1389	2472
	≥ 5	56	72	60	209	250	33	34	44	56	63	84	24	33	65	1083	
BD	< 5	3	0	1	0	1	3	0	0	5	0	0	0	0	3	16	37
	≥ 5	1	0	1	0	2	0	0	0	10	0	0	0	0	7	21	
AWD	< 5	0	0	0	0	0	0	0	0	0	0	0	0	0	0	0	0
	≥ 5	0	0	0	0	0	0	0	0	0	0	0	0	0	0	0	
AJS	< 5	3	11	15	13	16	3	17	3	19	14	1	0	11	0	126	357
	≥ 5	4	17	23	17	58	4	29	12	27	19	1	1	16	3	231	
ILI	< 5	163	126	191	376	417	65	81	36	404	138	164	250	19	110	2540	4795
	≥ 5	129	120	115	308	654	69	67	25	170	144	122	280	8	44	2255	
AFP	< 5	0	1	0	0	0	0	0	0	0	0	0	0	0	0	1	1
	≥ 5	0	0	0	0	0	0	0	0	0	0	0	0	0	0	0	
SM	< 5	0	5	1	1	7	4	2	2	4	0	0	0	41	8	75	119
	≥ 5	0	2	0	5	5	5	1	2	1	0	2	0	18	3	44	
SMN	< 5	0	2	0	1	1	0	1	0	0	0	0	0	1	0	6	18
	≥ 5	2	3	0	0	2	0	0	2	0	0	0	0	3	0	12	
SARI	< 5	3	41	0	0	52	0	1	0	4	0	0	0	0	4	105	182
	≥ 5	8	21	0	0	35	0	0	0	5	0	0	0	0	8	77	
ODs	< 5	1	33	13	83	34	3	2	32	1	104	6	18	12	9	351	1241
	≥ 5	19	129	48	124	144	44	50	75	15	164	12	38	22	6	890	
Total < 5		277	345	307	705	810	119	160	122	539	349	245	285	122	224	4609	9222
Total ≥ 5		219	364	247	663	1150	155	181	160	284	390	221	343	100	136	4613	
Total		496	709	554	1368	1960	274	341	282	823	739	466	628	222	360	9222	