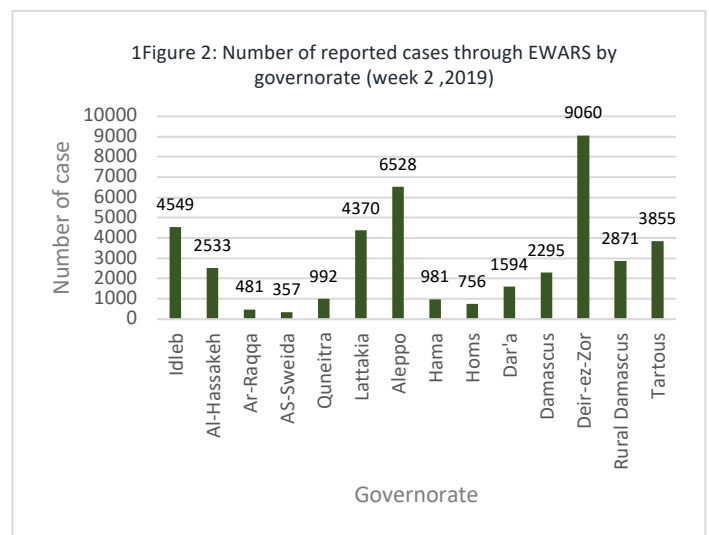
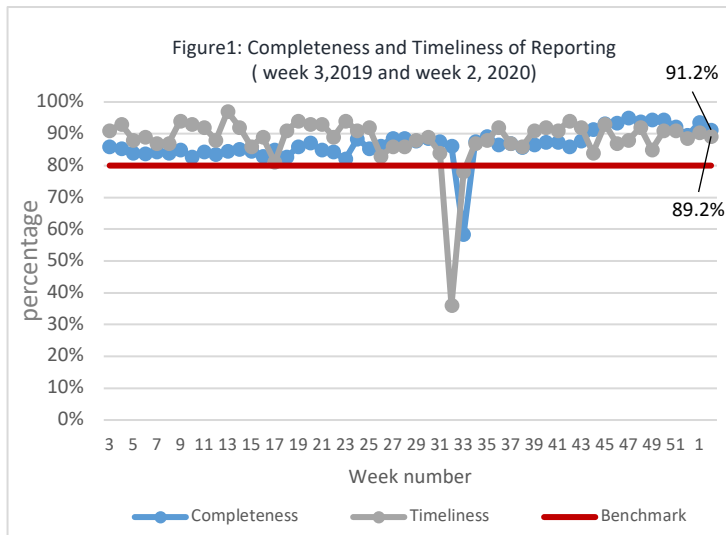


Highlights

- A total of 254 100 consultations were recorded in all the 14 governorates in week 2.
- The leading causes of morbidity among all age groups were influenza-like illnesses (59.8%) and acute diarrhea (24.9%).
- 20 suspected measles cases were reported during week 2. Among them, the blood specimens of 14 cases were collected and tested at the reference laboratory in Damascus. The laboratory result showed all tested negative for measles.
- Six acute flaccid paralysis cases were reported in week 2 from Damascus (3), Aleppo (2) and Homs (1).
- An increase of acute diarrhea cases was reported from 8st of January 2020 in Tal Maskan and Bitariye in Rural Damascus with a total of 190 cases with no associated death between 8 and 18 of January 2020. The water analysis identified E.coli in water network.

Performance Indicators

- A total of 1147 out of 1257 active reporting sites (91.2%) in all 14 governorates of Syria reported through EWARS, with 89.2% timeliness among those sites providing data during week 2 (Figure 1).



Morbidity

1. Proportional Morbidity

- A total of 254 100 consultations were recorded in 1147 health facilities in 14 governorates in week 2, 2020. Among them, 37 897 cases were EWARS notifiable health conditions (Figure 2).
- Among all age groups, the leading causes of morbidity influenza-like illnesses (ILI) (59.8%), and acute diarrhea (AD) (24.9%).
- Of the 37 897 total reported cases, 50.3% (19 090) were female, and 43.6% (16 556) were children under 5 years old.
- Among children under 5 years of age, 58.2% of cases are ILI, and AD representing 28.9% of the cases during this reporting period (Figure 3).
- The proportional mortality of ILI is 8.9% which increased by 1.4 % from the previous week (Figure 4).

Figure 3: Proportional morbidity by age group in week 2, 2020

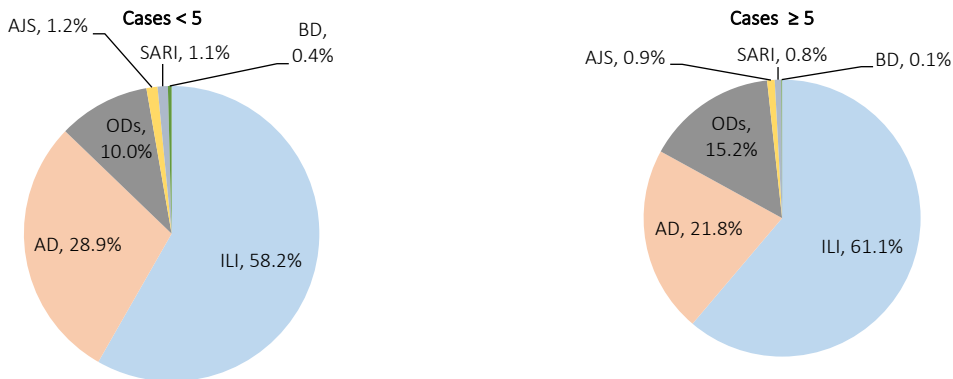
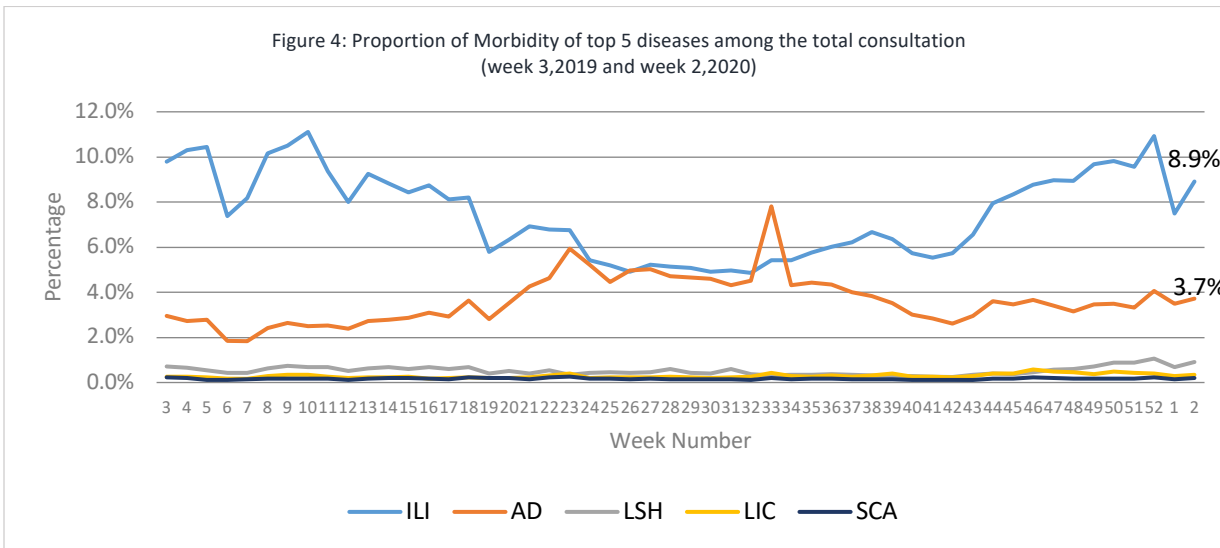


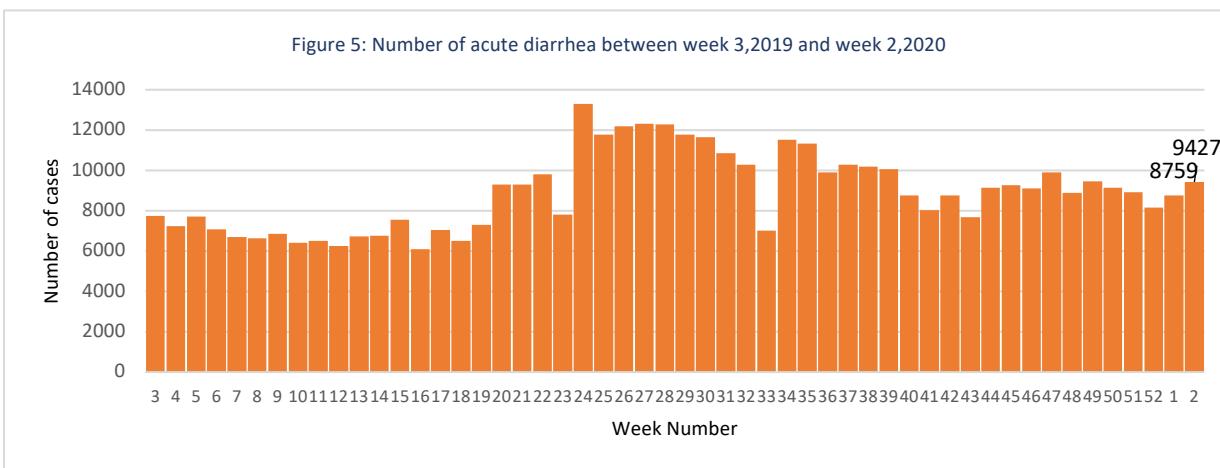
Figure 4: Proportion of Morbidity of top 5 diseases among the total consultation (week 3,2019 and week 2,2020)



2. Waterborne Diseases

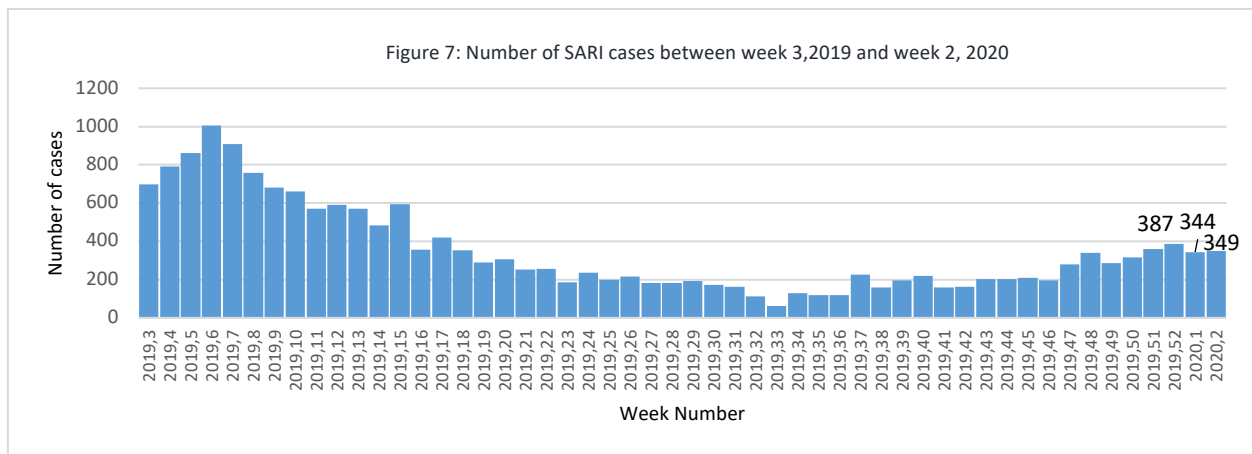
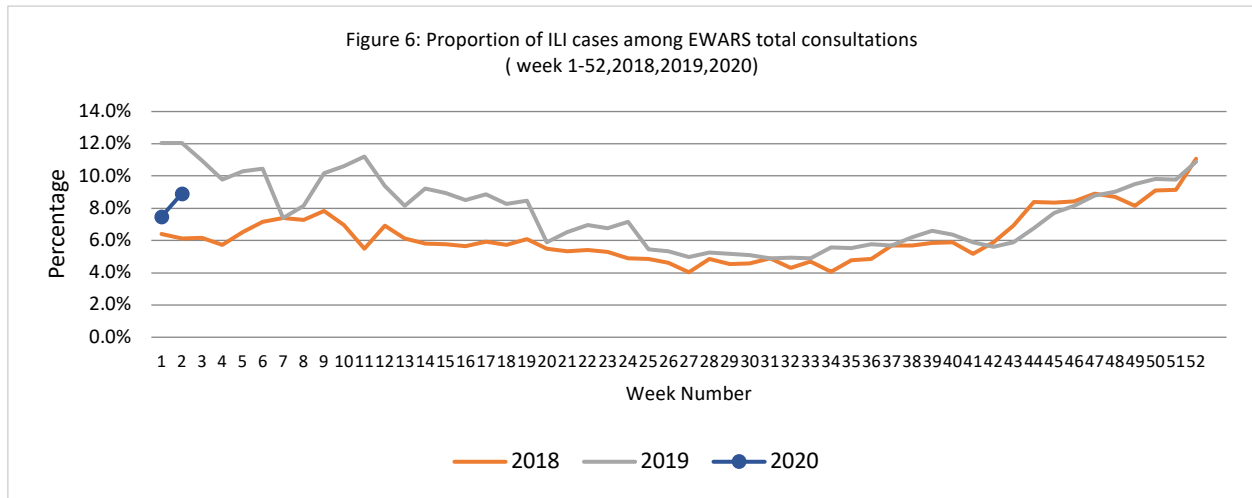
- There no case of acute watery diarrhea (AWD) in week 2.
- A total of 9427 acute diarrhea cases were reported. The trend remains stable (Figure 5).
- An increase of acute diarrhea cases was reported from 8st of January 2020 in Tal Maskan and Bitariye in Rural Damascus. A total of 190 AD cases (U5yrs:78, above 5yrs: 112) with no associated death had been reported from between 8 and 18 of January 2020. The symptoms were acute diarrhea. The severity of diarrhea ranges mild to moderate.

Figure 5: Number of acute diarrhea between week 3,2019 and week 2,2020



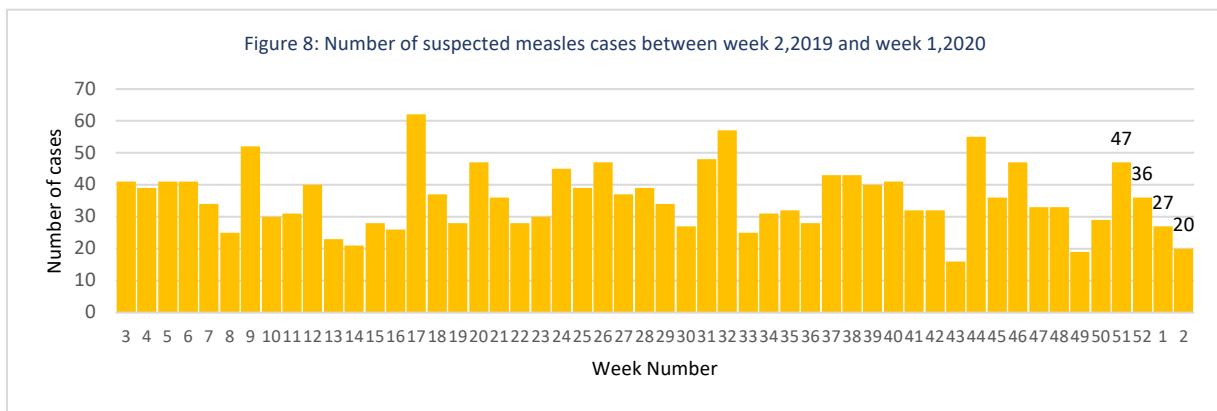
3. Respiratory Diseases

- In total, 22 668 ILI cases were reported during week. The proportional morbidity of ILI is 8.9% which is lower than the proportional morbidity of the previous year (Figure 6).
- In total, 346 SARI cases were reported during week 2, which increased by 1.2% compared to the previous week (Figure 8) the number of SARI cases is still within average number during this period of year.
- In total, 349 SARI cases were reported, and the trend remain stable (Figure 7) .



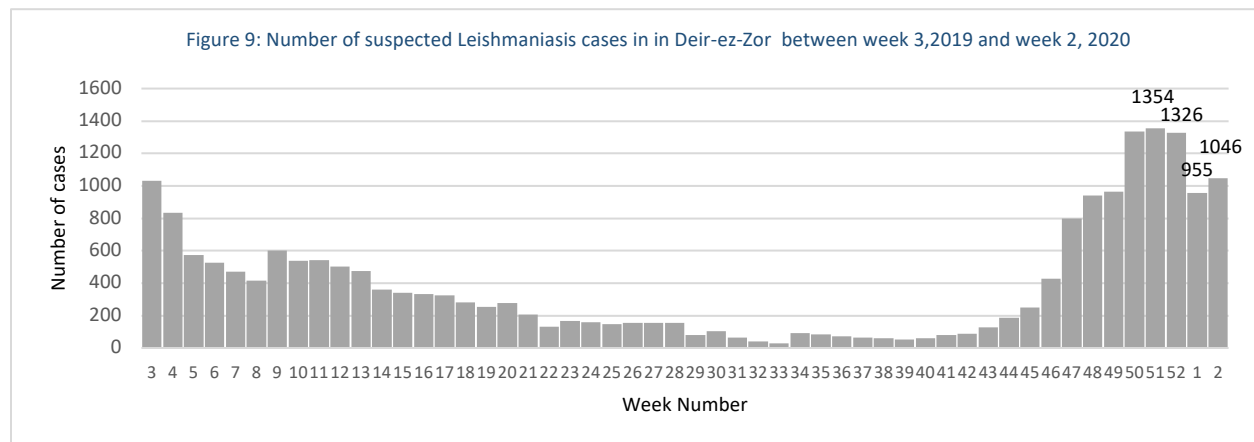
4. Vaccine Preventable Diseases

- Six case of acute flaccid paralysis (AFP) was reported in week 2: Three cases were from Damascus, wo cases from Aleppo, and one case from Homs.
- A total of 20 suspected measles cases were reported, which decreased by 45.4% compared to the average of the previous three weeks (Figure 8) . Most cases were reported from Ar-Raqqa (7), Idleb (6), and Homs (5).



Other Diseases

- 4916 cases were reported as “other diseases” through EWARS. The health conditions with the highest incidents were leishmaniasis (2313), lice (877), and scabies (477).
- During week 2, most of suspected leishmaniasis cases were reported from Deir-ez-Zor (45.2%), Aleppo (37.4%), and Idleb (7.6%). In Deir-ez-Zor, a total of 955 cases were reported which decreased by 13.65 compared to the previous three weeks (Figure 9).



Public Health Response Actions

Suspected measles

A total of 20 suspected measles cases was reported during week 2. All the cases were investigated by rapid response teams of the health directorates except for the cases reported from Idleb governorate (6 cases) where the access is limited. The blood specimens from 14 suspected cases were collected and tested for IgM ELISA at the reference laboratory in Damascus. The laboratory result showed all 14 samples were negative for measles.

Acute flaccid paralysis

In total, six AFP cases were reported during week 2 in Damascus (three cases) an Aleppo (two cases), and Homs (one case). One case was child under 5 years old, and five cases were above 5 years old. The stool samples from all the three cases were collected and tested at the polio reference laboratory in Damascus, and the result showed the all case were negative for poliomyelitis.

Diarrhea cases in Tal Maskan and Bitariye in Rural Damascus

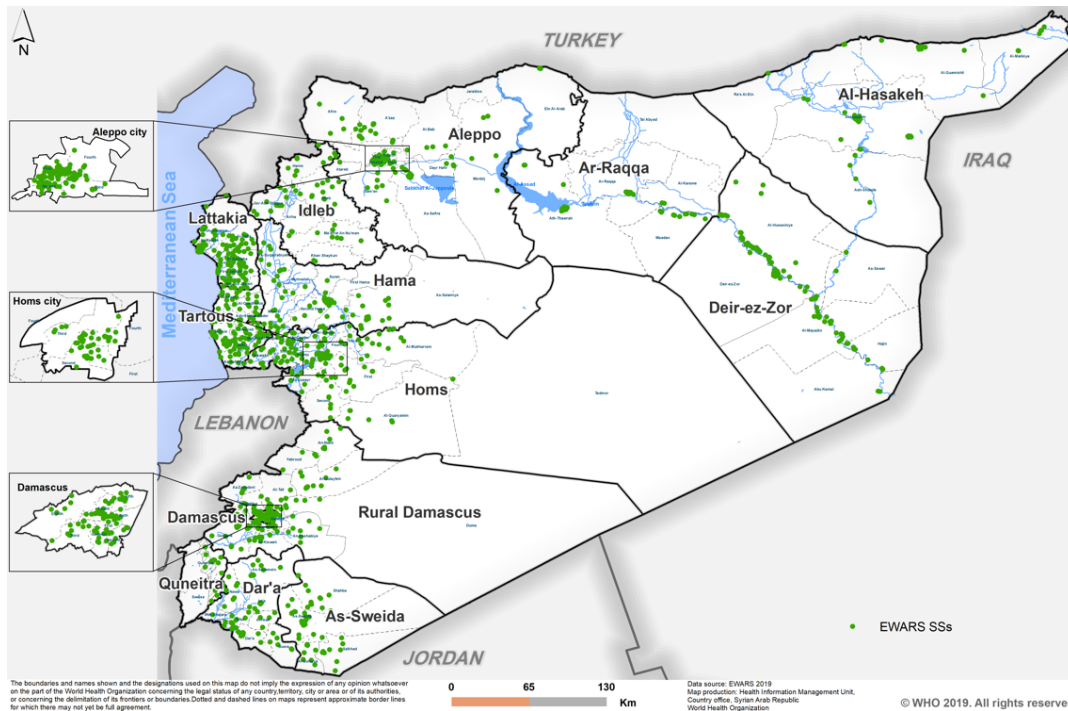
An increase of acute diarrhea cases was reported from 8st of January 2020 in Tal Maskan and Bitariye in Rural Damascus. Between 8 and 18 of January 2020, a total of 190 (U5yrs:78, above 5yrs: 112) cases with no associated death were reported. The symptoms were acute diarrhea. The severity of diarrhea ranges mild to moderate. On 9 January, three samples of water network from Tal Maska and tested. The results showed all sample had no residual chlorine and identified fecal contamination (E.coli + fecal coliform) in all three samples. The water in the network was sterilized after the analysis immediately.

Severe acute respiratory infection (SARI)

From 1st to 11th January 2020, nine samples were collected from SARI cases admitted to ICU and sent to the national influenza laboratory in Damascus. Among them, two cases were positive for influenza type A H1N1, one case was positive for influenza type A (not subtyped), and one case positive for influenza type B.

Disease	Week 1	Week 2
Acute diarrhea (AD)	8 759	9 427
Bloody diarrhea (BD)	61	85
Acute watery diarrhea (AWD)	0	0
Acute jaundice syndrome (AJS)	391	389
Influenza like illness (ILI)	18 795	22 668
Acute flaccid paralysis (AFP)	3	6
Suspected measles (SM)	27	20
Suspected meningitis (SMN)	50	37
Typhoid fever (TYF)	210	224
Brucellosis (BRU)	137	94
Suspected tuberculosis (TB)	17	25
Severe acute respiratory infection (SARI)	344	349
Suspected pertussis (PER)	104	94
suspected leishmaniasis (LSH)	1 688	2313
Suspected chickenpox (CHP)	312	338
Scabies (SCA)	391	477
Lice (LIC)	700	877
Suspected mumps (MUM)	104	98
Others	215	294
Total	32 308	37 897

Annex 2: Map of EWARS sentinel site



		Idleb	Al-Hasakeh	Ar-Raqqa	As-Sweida	Quneitra	Lattakia	Aleppo	Hama	Homs	Dar'a	Damascus	Deir-ez-Zor	Rural Damascus	Tartous	Total
Acute diarrheea (AD)	< 5	787	320	225	31	68	407	676	156	130	154	233	1 038	232	326	4 783
	≥ 5	764	181	111	20	77	536	441	155	79	126	359	1 060	357	378	4 644
Bloody diarrheea (BD)	< 5	0	2	17	0	0	0	0	0	0	4	1	42	1	0	67
	≥ 5	0	1	5	0	0	0	0	0	0	3	5	4	0	0	18
Acute watery diarrheea (AWD)	< 5	0	0	0	0	0	0	0	0	0	0	0	0	0	0	0
	≥ 5	0	0	0	0	0	0	0	0	0	0	0	0	0	0	0
Acute jaundice syndrome (AJS)	< 5	55	0	66	0	2	1	8	1	0	6	3	53	5	1	201
	≥ 5	40	1	35	1	3	5	13	16	6	10	12	37	7	2	188
Influenza like illness (ILI)	< 5	947	633	201	92	234	1 155	2048	95	190	256	340	1 903	721	817	9 632
	≥ 5	857	680	144	148	314	1 635	2310	193	279	270	851	1 955	1 350	2 050	13 036
Acute flaccid paralysis (AFP)	< 5	0	0	0	0	0	0	0	0	0	0	1	0	0	0	1
	≥ 5	0	0	0	0	0	0	2	0	1	0	2	0	0	0	5
Suspected measles (SM)	< 5	0	1	2	0	0	2	2	0	3	0	0	0	0	0	10
	≥ 5	6	0	1	0	0	0	0	0	2	0	1	0	0	0	10
Suspected meningitis (SMN)	< 5	1	0	1	0	0	0	0	6	1	0	1	3	1	0	14
	≥ 5	9	1	0	0	0	0	2	5	1	0	3	2	0	0	23
Severe acute respiratory infection (SARI)	< 5	0	27	0	2	0	4	15	54	1	1	27	19	0	35	185
	≥ 5	1	7	0	11	0	22	10	34	0	0	28	11	0	40	164
Typhoid fever (TYF)	< 5	24	0	2	0	0	0	0	0	0	0	0	9	2	0	37
	≥ 5	30	0	4	0	0	0	6	6	0	5	0	132	4	0	187
Brucellosis (BRU)	< 5	5	0	3	0	0	0	4	2	0	0	0	31	0	0	45
	≥ 5	7	3	0	0	0	0	30	1	4	4	4	65	13	0	131
Suspected tuberculosis (TB)	< 5	1	0	0	0	0	0	0	0	0	0	0	0	0	0	1
	≥ 5	1	2	0	0	0	0	12	0	0	0	0	8	1	0	24
Suspected pertussis (PER)	< 5	29	0	0	0	0	0	0	0	0	0	0	25	0	0	54
	≥ 5	22	0	0	0	0	0	0	0	0	0	0	18	0	0	40
suspected leishmaniasis (LSH)	< 5	68	8	7	0	0	1	145	10	2	0	9	465	5	3	723
	≥ 5	107	14	10	0	0	12	719	63	5	0	24	581	31	24	1 590
Suspected chickenpox (CHP)	< 5	21	58	26	0	1	1	19	6	1	2	2	67	4	1	209
	≥ 5	29	22	3	0	1	3	31	5	4	2	2	19	7	1	129
Scabies (SCA)	< 5	44	9	5	2	0	6	7	0	7	3	0	78	0	0	161
	≥ 5	105	9	7	7	4	12	35	1	16	7	4	108	1	0	316
Lice (LIC)	< 5	102	25	1	0	2	26	17	3	4	0	1	40	1	0	222
	≥ 5	159	23	2	0	2	209	78	42	15	4	2	108	11	0	655
Suspected mumps (MUM)	< 5	0	2	12	0	0	0	5	2	2	2	0	15	0	0	40
	≥ 5	23	5	2	0	0	0	1	5	4	0	0	18	0	0	58
Others	< 5	7	93	0	0	4	4	10	5	17	7	0	23	0	1	171
	≥ 5	0	28	0	0	1	4	6	4	28	8	0	17	27	0	123
Total of < 5		2 091	1 178	568	127	311	1 607	2 956	340	358	435	618	3 811	972	1 184	16 556
Total of ≥ 5		2 160	977	324	187	402	2 438	3 696	530	444	439	1 297	4 143	1 809	2 495	21 341
Grand total		4 251	2 155	892	314	713	4 045	6 652	870	802	874	1 915	7 954	2 781	3 679	37 897