


Trauma

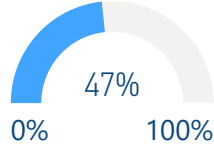
73,283

Trauma cases supported **



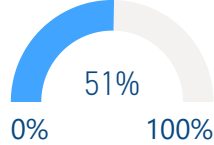
Immunization

DPT3 (under 1 y)



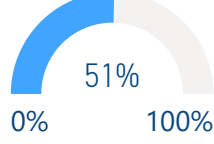
22,308

Measles 2 (1-2 y)



24,148

Polio 3 (under 1 y)



24,164



Nutrition

25

Stabilization centres are treating patients with severe acute malnutrition (SAM)

25


Patients with SAM with medical complications receiving treatment

968

Nutrition surveillance centres

72,791

Children under 5 screened for GAM (global acute malnutrition)



Mental Health

43,280


Mental health and psychosocial support interventions provided by NGOs

578

Health facilities and community centres providing MHPSS services

1,470

Schools providing MHPSS services Alerts




Integrated Management of Childhood Illness (IMCI)

536

Working health centres in IMCI

18,830

IMCI services




Newborns care at home (NCH)

116	1,583
Health villages working in NCH	Home visits

15

Referred mothers and newborn to specialized care



Neonatal resuscitation (NR):


47	5,671
Hospitals working in NR	Newborns

33

Referred newborns to specialized care

*The data in this infographic are for WHO's hub in Damascus only

**Based on public hospital received support from WHO



Primary Health Care

13 DoH

Public PHC facilities/DoH received medical equipment and supplies directly by WHO

25

Rolled out DoH/SARC mobile medical teams/clinics



M&E

141

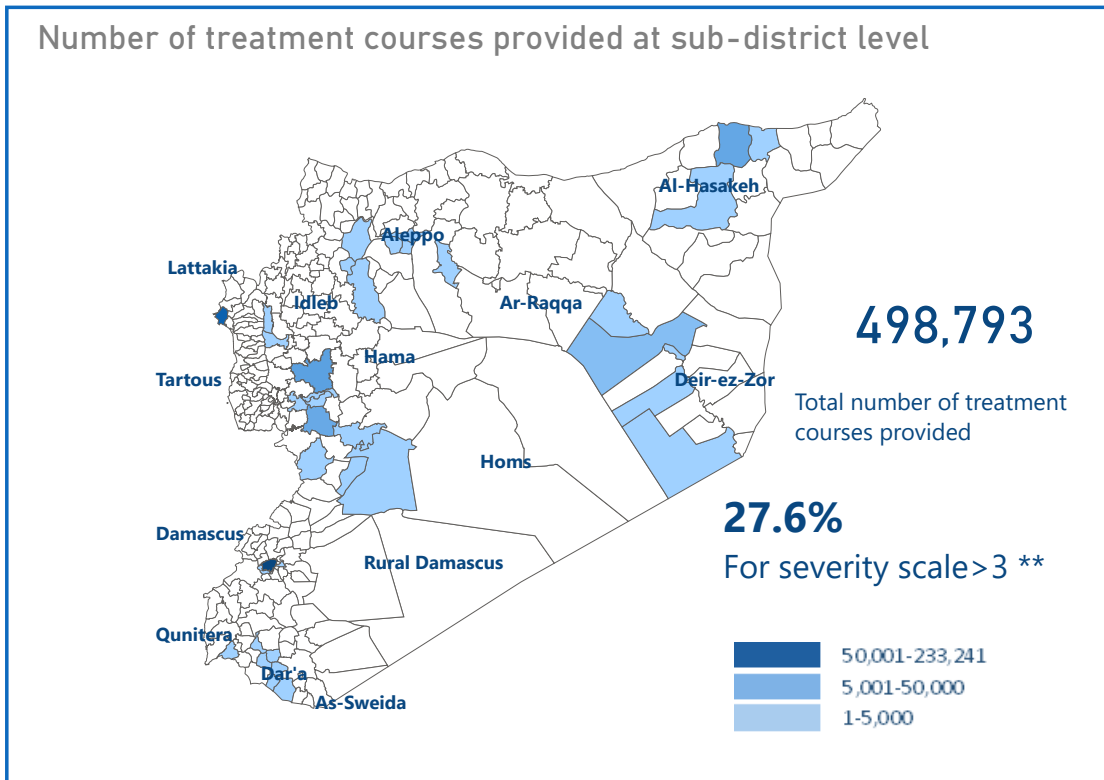
Field visits (assessments, supervision, monitoring and evaluation)




Secondary Health Care

50

Hospitals were directly Supported by WHO with medical equipment and supplies*





EWARS

1,417
Sentinel sites

Top 5 reported morbidities

Influenza Like Illness, Acute Diarrhea, Leishmaniasis, SARI, Lice

Sentinel sites submitting weekly surveillance reports

80.0%

Alerts investigated and responded to in a timely manner

95.0%



Attacks on Health care

1
Number of Attacks

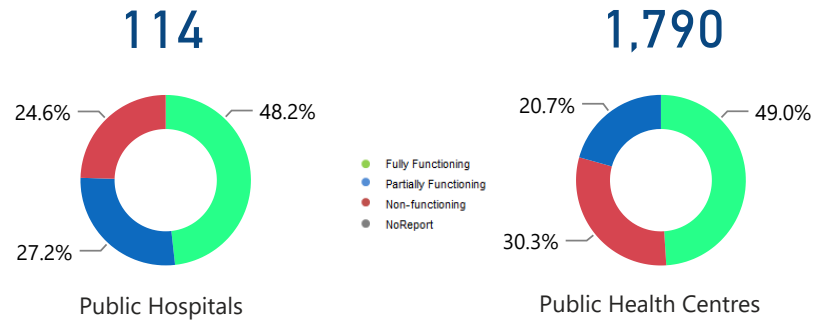
0
Health workers killed

0
Health workers Injured

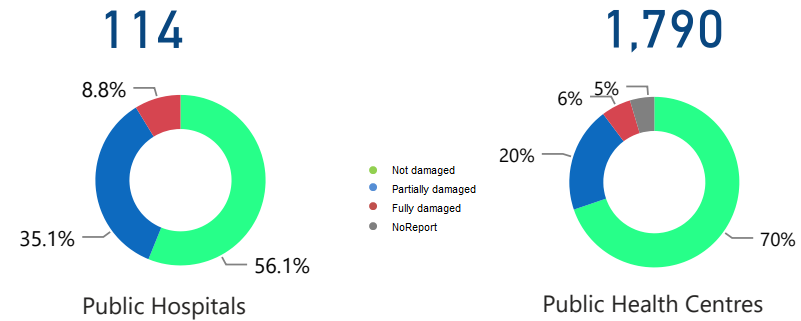
*Other undefined hospitals are supported indirectly throughout MoH and MoHE at central level

** Data source: Health Sector Severity Scale January 2021

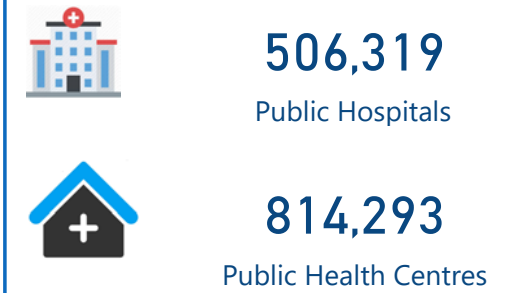
HeRAMS : Functionality Status



HeRAMS : Level of damage



HeRAMS : Consultations



Operations Support and logistic

136

Total number of regular deliveries across the country including IA convoys

91.08

Total weight (tons) of regular deliveries across the country including IA convoys



Total regular deliveries across the country

Total weight (tons) of supplies delivered **78.10**

134
Total number of regular deliveries

464,599
Total number of treatment courses delivered

29.60 Medicines	41.65 Equipment
3.29 Kits	3.57 Non-medical supplies (WASH, Nutrition, and others)



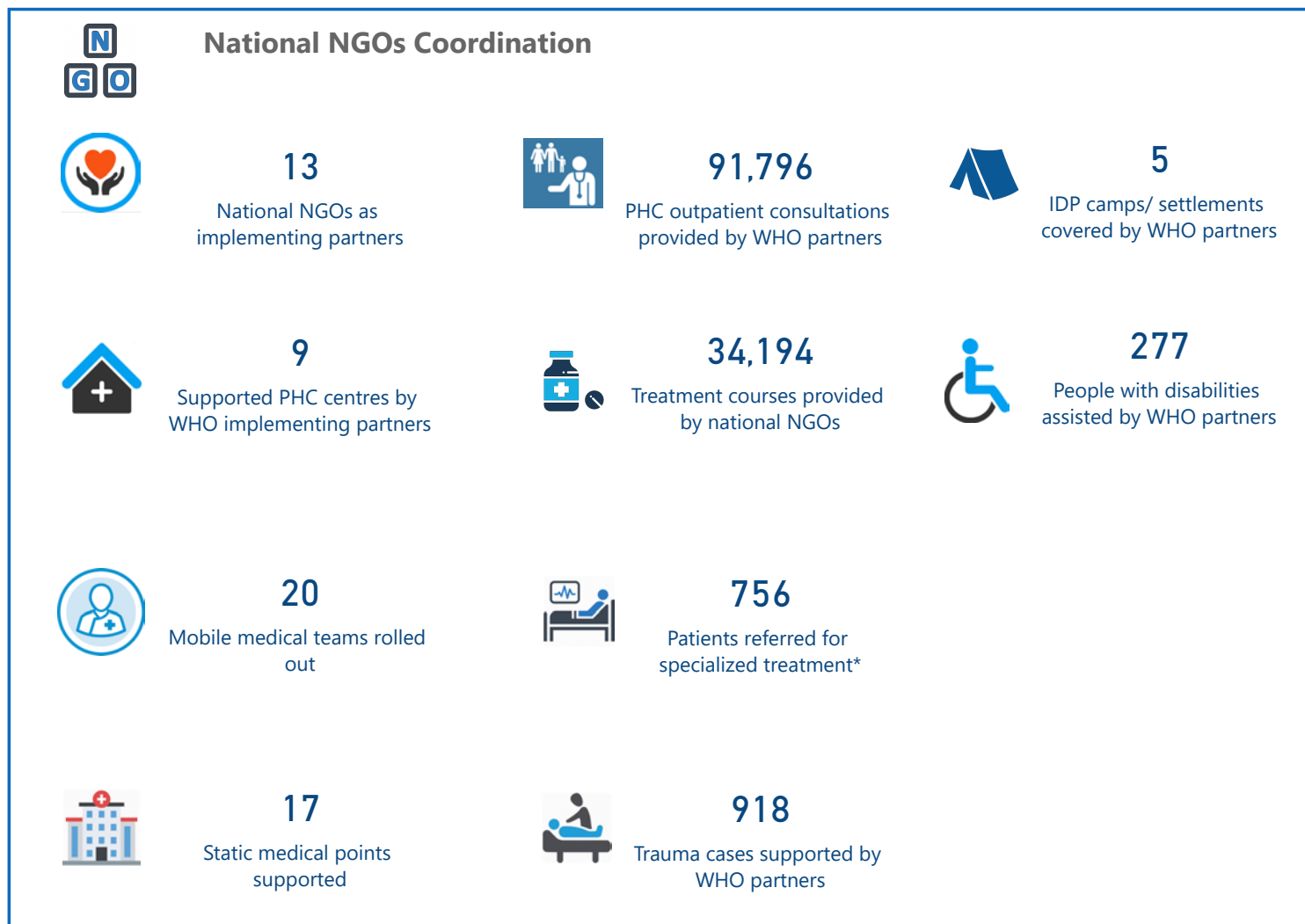
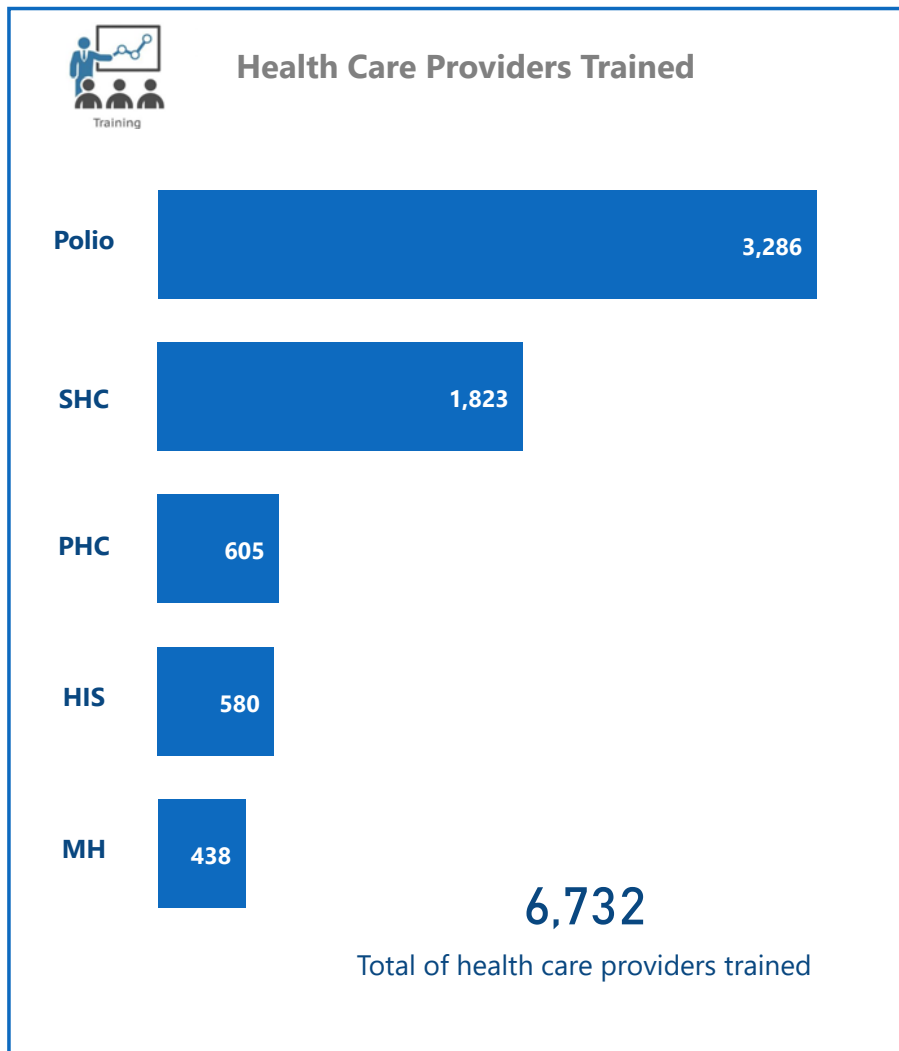
Inter-agency convoys

Total weight (tons) of supplies delivered **12.98**

2
Total number of IA convoys

0
Total number of treatment courses provided

0.00 Medicines	12.96 Equipment
0.00 Kits	0.02 Non-medical supplies (WASH, Nutrition, and others)



The boundaries and names shown and the designations used on this map do not imply the expression of any opinion whatsoever on the part of the World Health Organization concerning the legal status of any country, territory, city or area or of its authorities, or concerning the delimitation of its frontiers or boundaries. Dotted and dashed lines on maps represent approximate border lines for which there may not yet be full agreement

* referred cases include number of births

Data source: WHO programs, 4Ws

Map production: Health Information Management Unit, Country office, Syrian Arab Republic

World Health Organization © WHO 2021 All right