





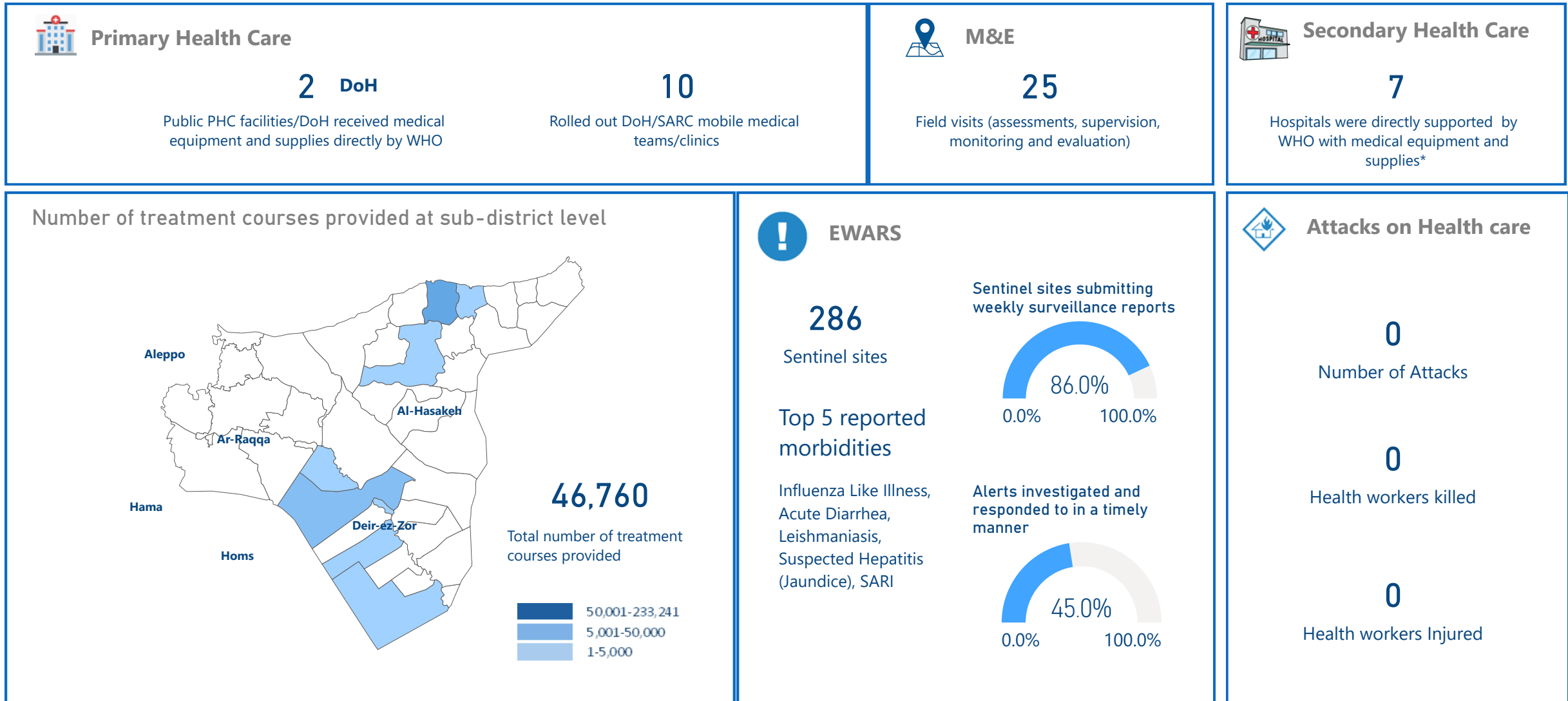
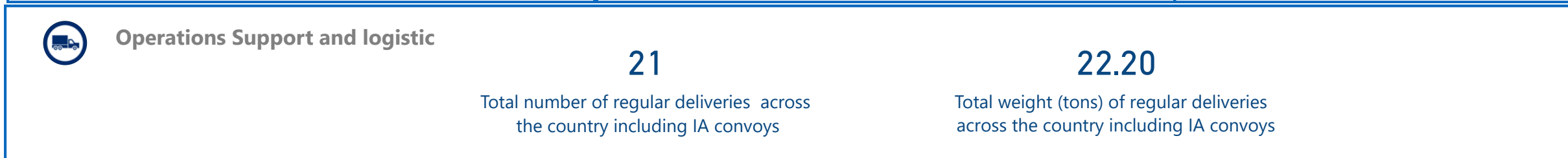
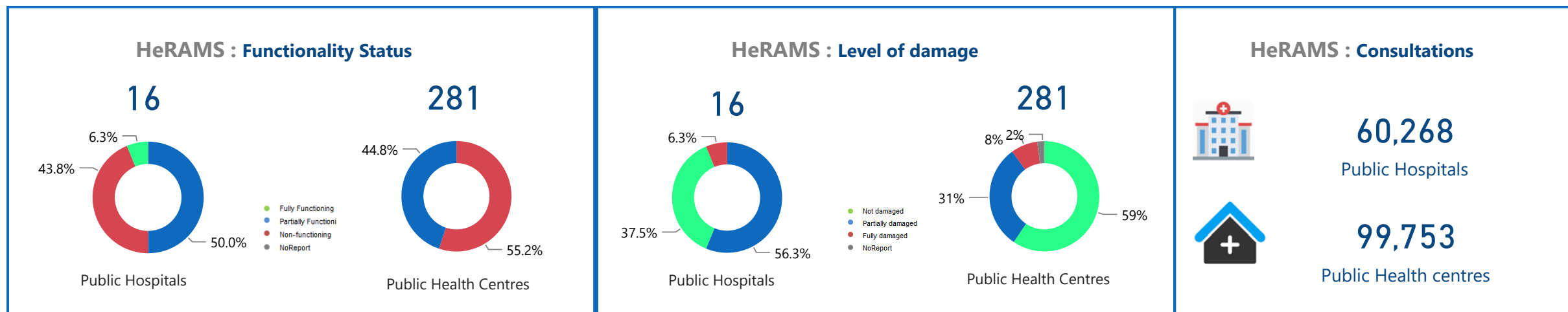
 <p>Trauma</p> <p>8,058</p> <p>Trauma cases supported **</p>	 <p>Nutrition</p> <p>5 Stabilization centres are treating patients with severe acute malnutrition (SAM)</p> <p>5 Patients with SAM with medical complications receiving treatment</p> <p>66 Nutrition surveillance centres</p> <p>6,290 Children under 5 screened for GAM (global acute malnutrition)</p>	 <p>Integrated Management of Childhood Illness (IMCI)</p> <p>36 Working health centers in IMCI</p> <p>748 IMCI services</p>
 <p>Immunization</p> <p>DPT3 (under 1 y)</p> <p>40% 4,893</p> <p>Measles 2 (1-2 y)</p> <p>47% 5,683</p> <p>Polio 3 (under 1 y)</p> <p>47% 5,751</p>	 <p>Mental Health</p> <p>28,968 Mental health and psychosocial support interventions provided by NGOs</p> <p>39 Health facilities and community centres providing MHPSS services</p> <p>104 Schools providing MHPSS services Alerts</p>	<p> Newborns care at home (NCH)</p> <p>9 Health villages working in NCH</p> <p>364 Home visits</p> <p>1 Referred mothers and newborns to specialized care</p> <p> Neonatal resuscitation (NR):</p> <p>2 Hospitals working in NR</p> <p>511 Newborns</p> <p>388 Referred newborns to specialized care</p>

*North East Syria (Al-Hasakeh, Deir-ez-Zor, Ar-Raqqa)

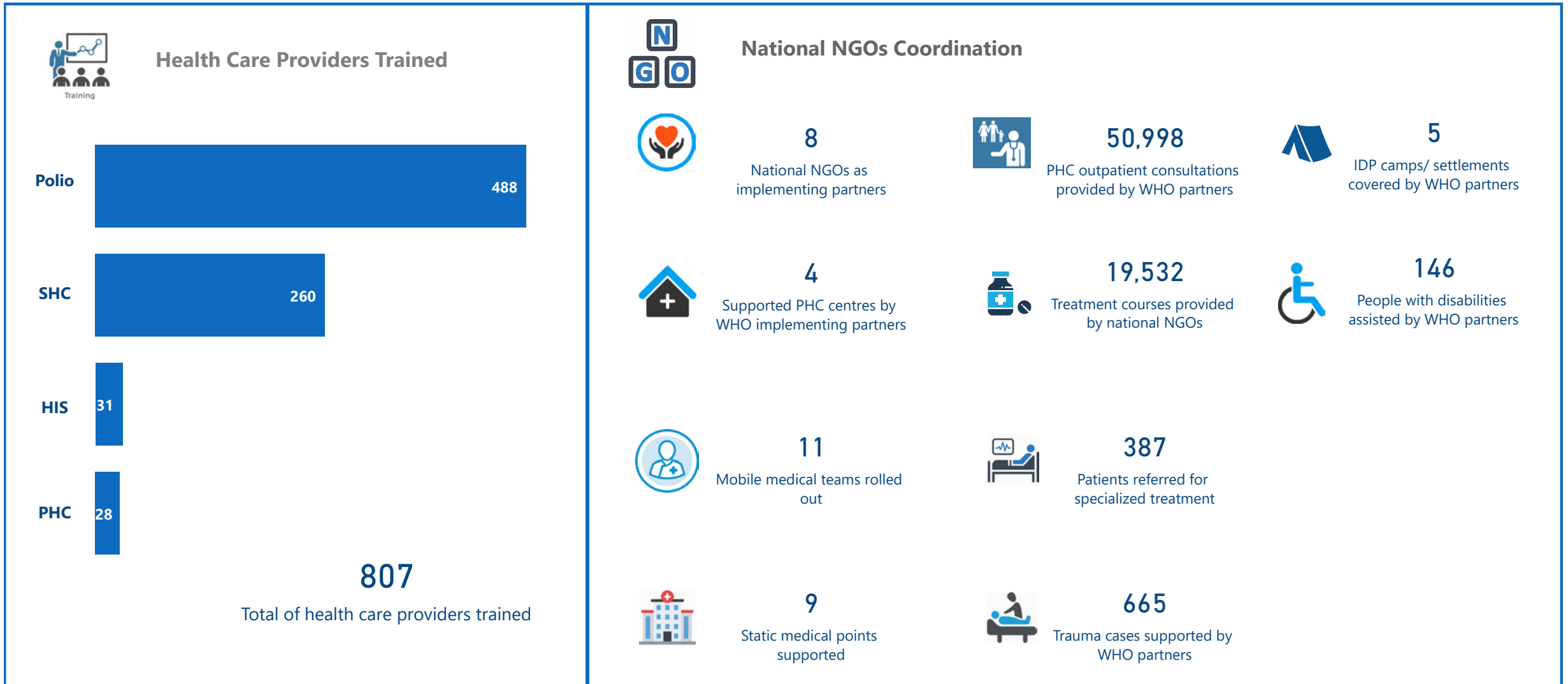
**Based on public hospital received support from WHO



*Other undefined hospitals are supported indirectly throughout MoH and MoHE at central level



Total regular deliveries across the country			Inter-agency convoys		
<p>21</p> <p>Total number of regular deliveries</p>	<p>18.53</p> <p>Medicines</p>	<p>0.68</p> <p>Equipment</p>	<p>0</p> <p>Total number of IA convoys</p>	<p>0</p> <p>Medicines</p>	<p>0</p> <p>Equipment</p>
<p>27,228</p> <p>Total number of treatment courses delivered</p>	<p>2.65</p> <p>Kits</p>	<p>0.33</p> <p>Non-medical supplies (WASH, Nutrition, and others)</p>	<p>0</p> <p>Total number of treatment courses provided</p>	<p>0</p> <p>Kits</p>	<p>0</p> <p>Non-medical supplies (WASH, Nutrition, and others)</p>



The boundaries and names shown and the designations used on this map do not imply the expression of any opinion whatsoever on the part of the World Health Organization concerning the legal status of any country, territory, city or area or of its authorities, or concerning the delimitation of its frontiers or boundaries. Dotted and dashed lines on maps represent approximate border lines for which there may not yet be full agreement

Data source: WHO programs, 4Ws
Map production: Health Information Management Unit, Country office, Syrian Arab Republic