

Trauma

Trauma cases supported **

48,169

EWARS

Sentinel sites

1,408

Sentinel sites submitting weekly surveillance reports: 85.9%

Alerts investigated and responded within 72 hours: 93.2%

Sub-districts covered with EWARS system: Quarterly

Confirmed outbreaks investigated and responded on timely manner: Annual

Coordination

National and sub-national health sector coordination meetings led by WHO

14

Immunization

DPT3 (under 1 y): 47.3%

Measles 2 (1-2 y): 48.0%

Polio 3 (under 1 y): 48.6%

Adequacy rate (Polio surveillance): 100.0%

AFP rate (Polio surveillance): 3.5

Outreach teams deployed: 39

Mobile EPI teams deployed: 82

Accelerated EPI activity in HRA: Quarterly

Active surveillance visits: Quarterly

Treatment

Number of treatment courses provided at sub-district level

Total number of treatment courses provided: **166,080**

5.6% For severity scale >3 ***

0 166,080

Treatment

Treatment courses per program

Program	Treatment Courses
EWARS	106,338
PHC	34,047
NGO	21,710
Trauma	2,710
SHC	1,250
MH	25

Grant

Funding requested: **195,111,935 \$**

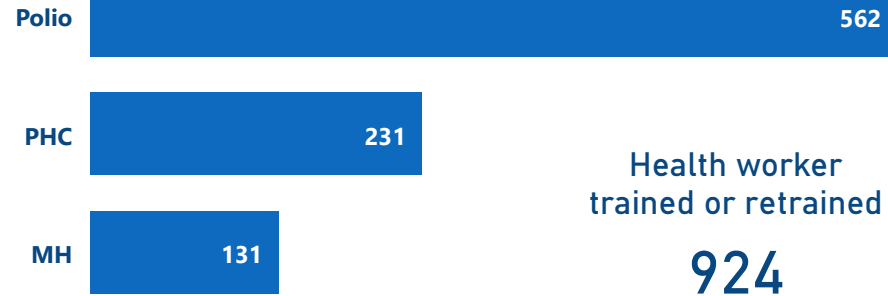
Funding received by WHO: 6.0%

*The data in this infographic are for WHO's hub in Damascus only

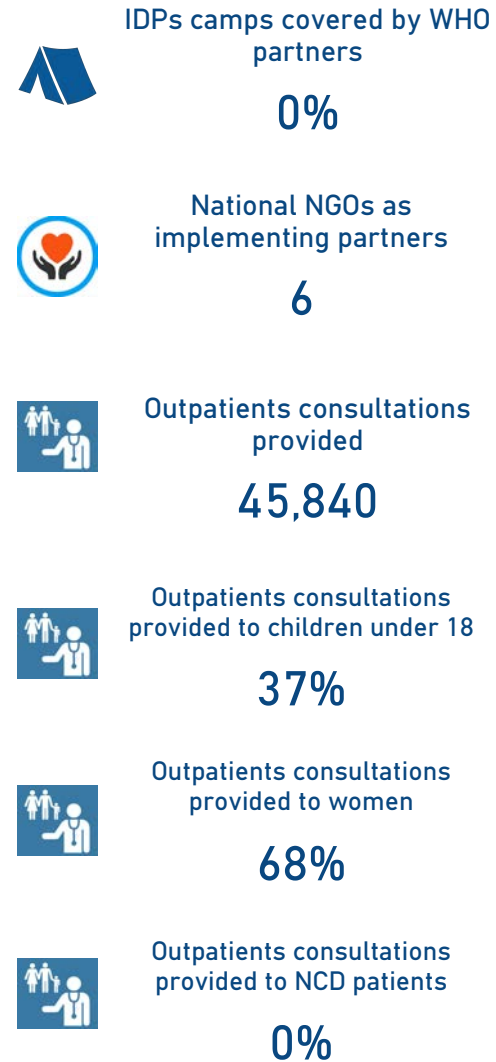
*** Data source: Health Sector Severity Scale January 2022

**Based on public hospital received support from WHO

Health Care Providers Trained



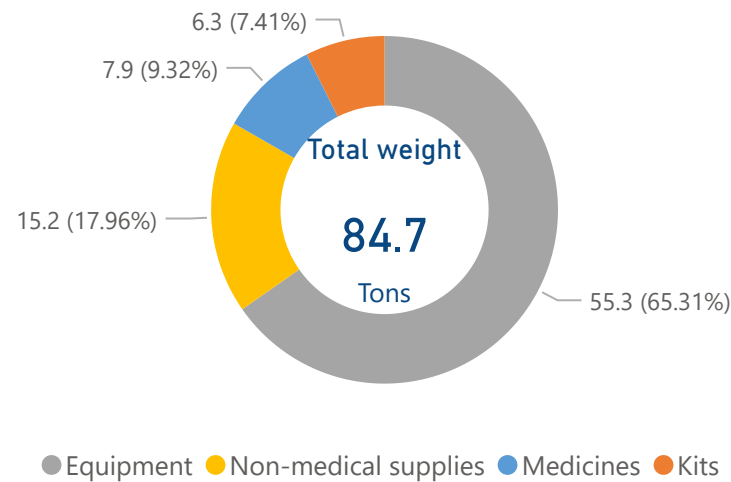
National NGOs Coordination



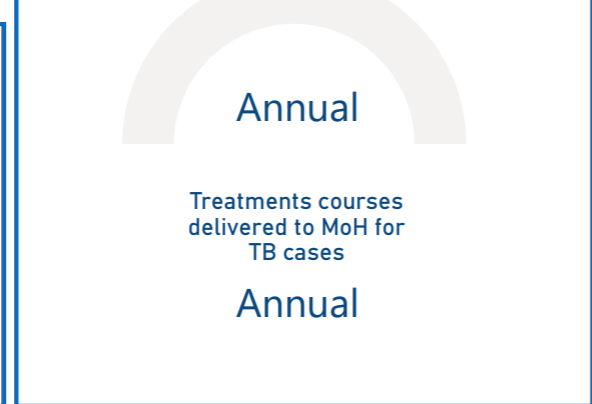
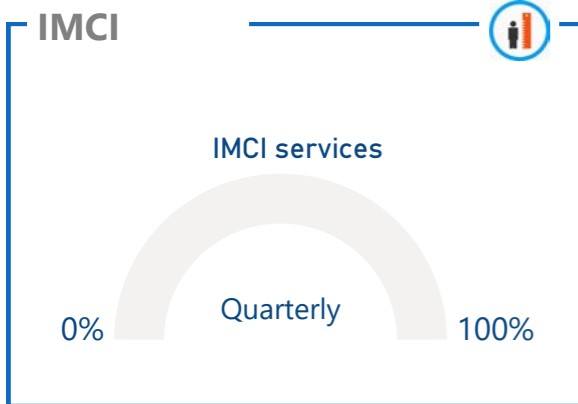
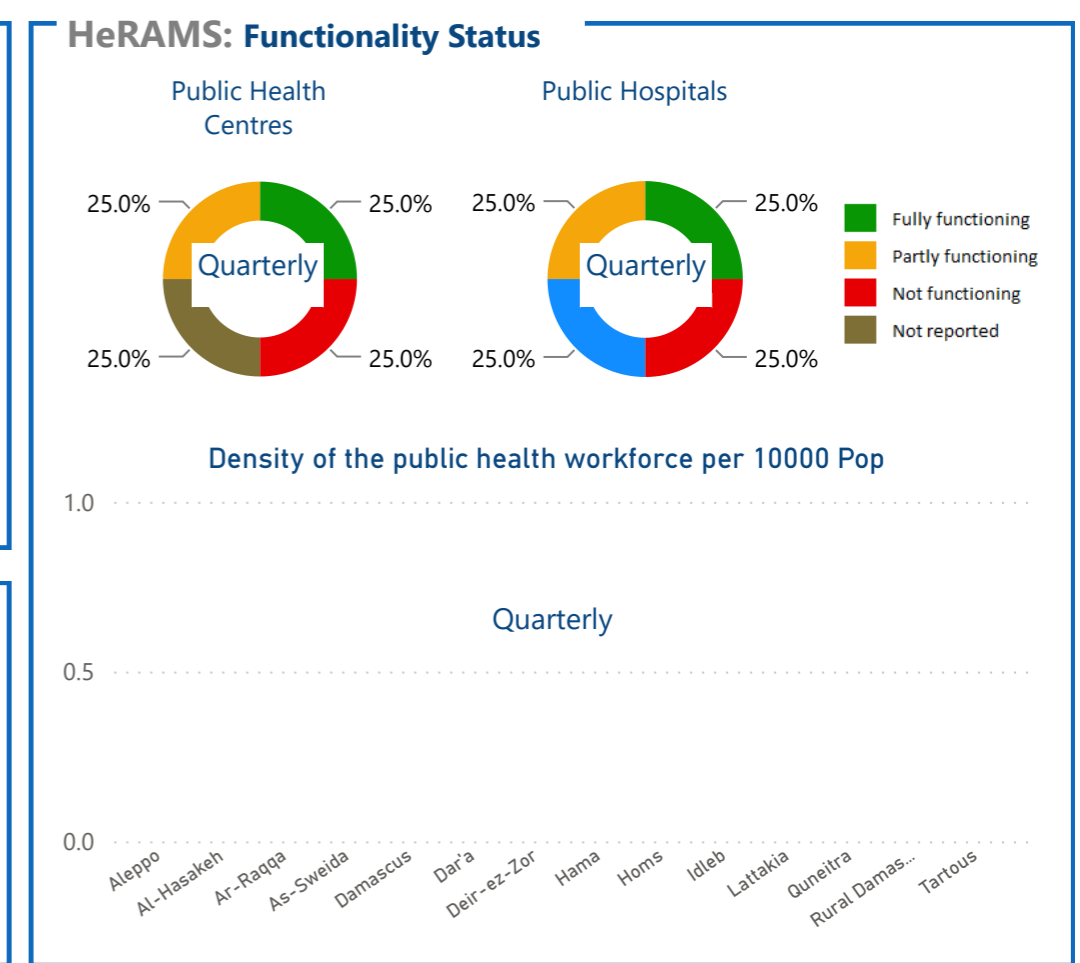
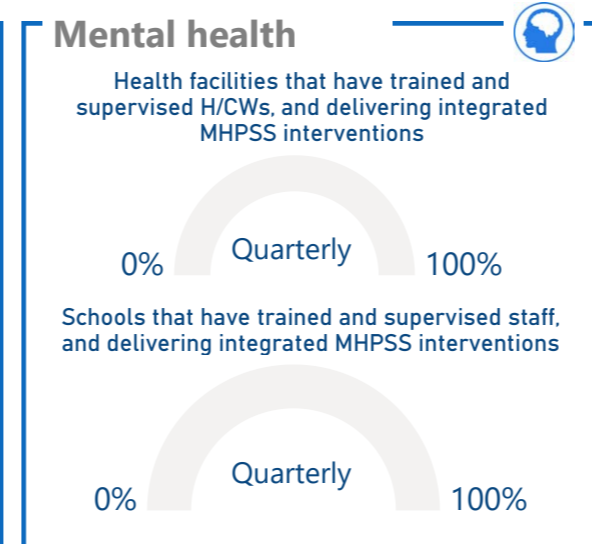
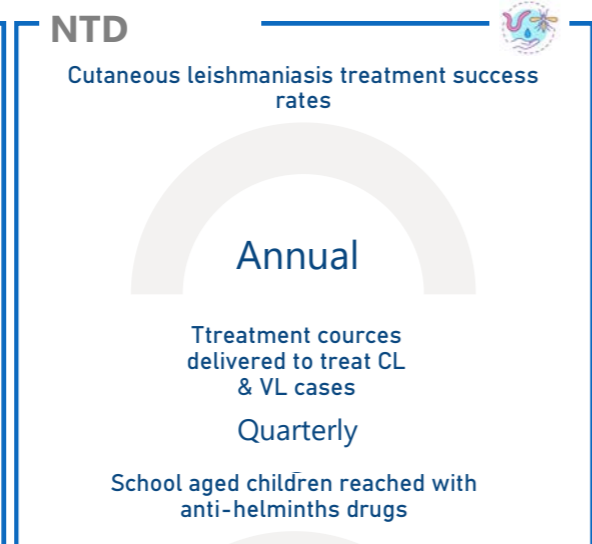
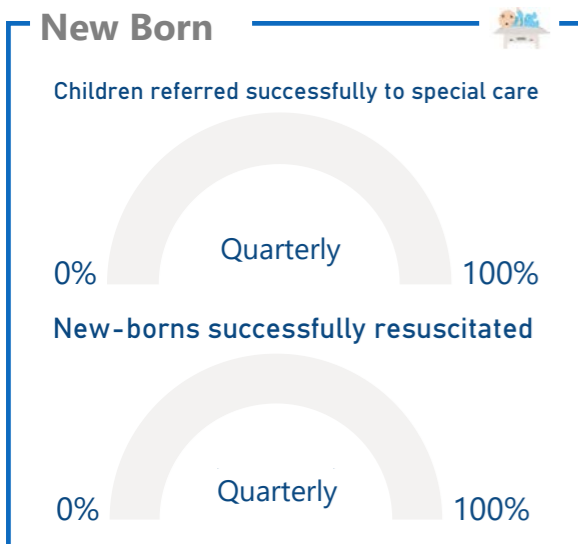
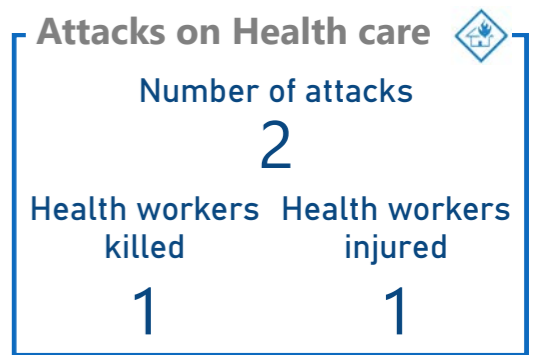
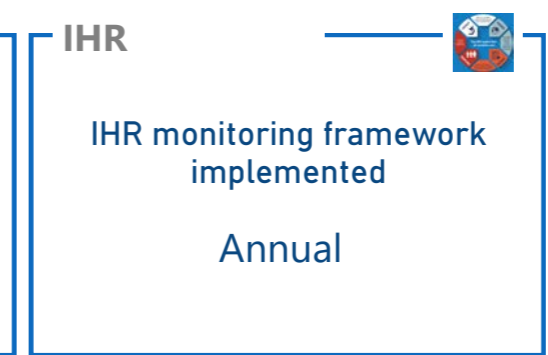
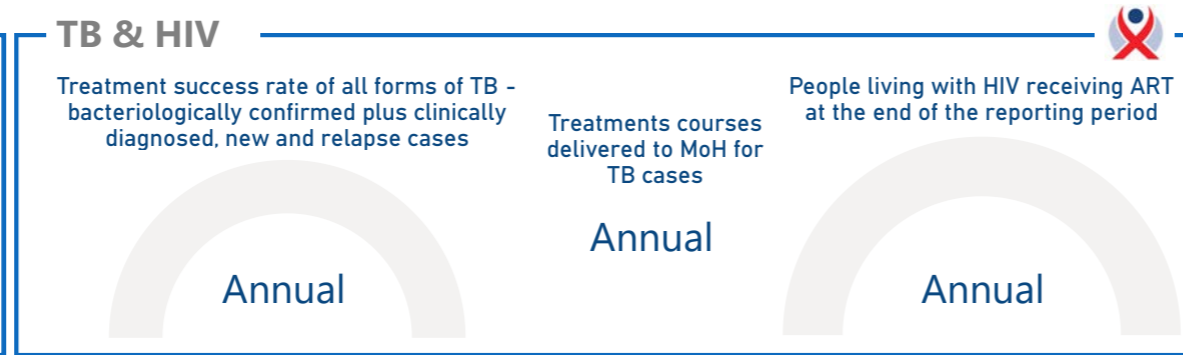
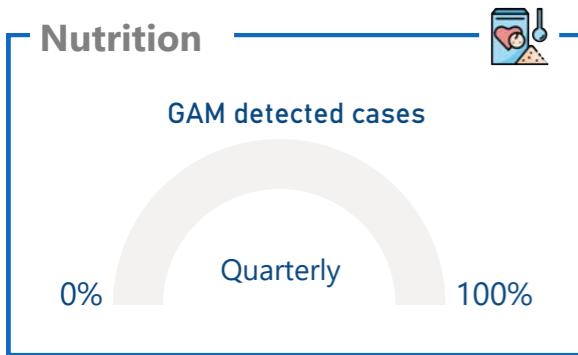
Operations Support and logistic



WHO delivered health supplies Within Syria



* referred cases include number of trauma cases



Health system



National policy/strategic document supported

Annual

National guidelines produced

Annual

National surveys/Studies carried out

Annual

Communication



People reached with health messages through social media

Quarterly

Secondary Health Care



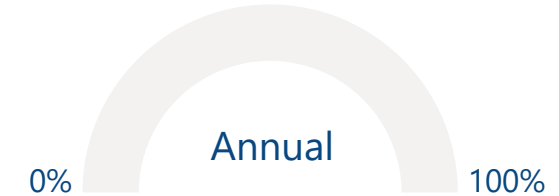
Hospitals consultations



Quarterly



Health facilities rehabilitated/equipped to restore functionality



PHC facilities supported with rehabilitation



Annual

Public hospitals supported with rehabilitation



Annual

Public hospitals supported with medical equipment



Annual

Established PHEOC



Quarterly

Ambulances provided



Annual