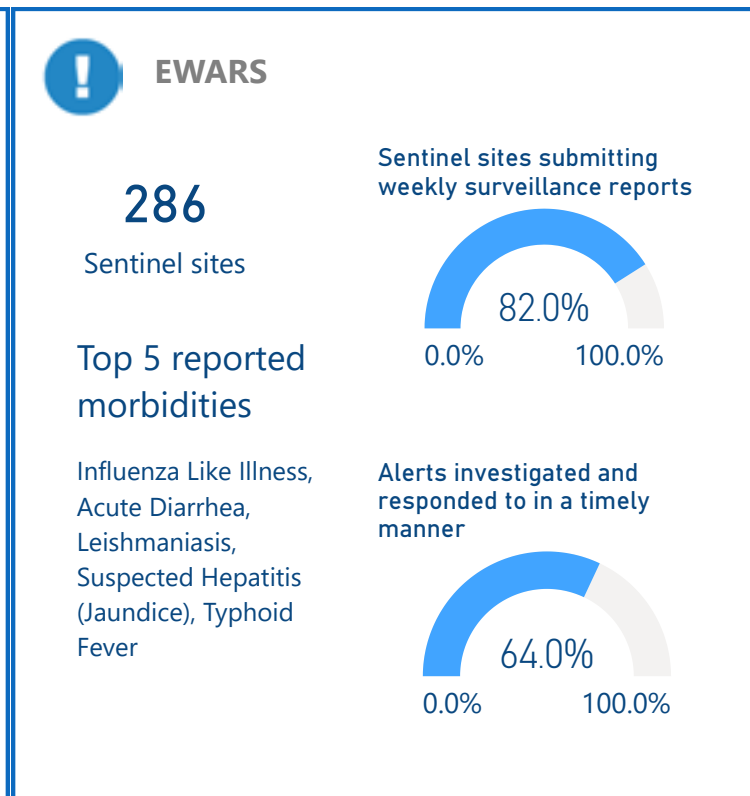
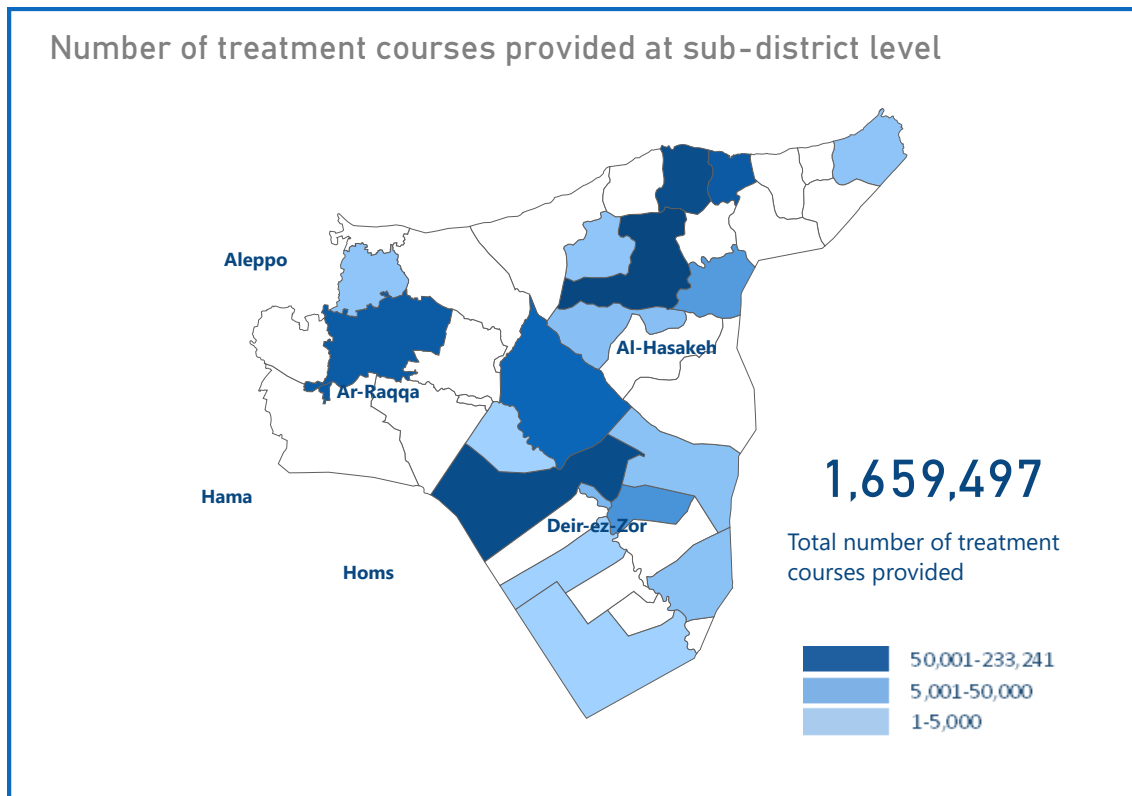
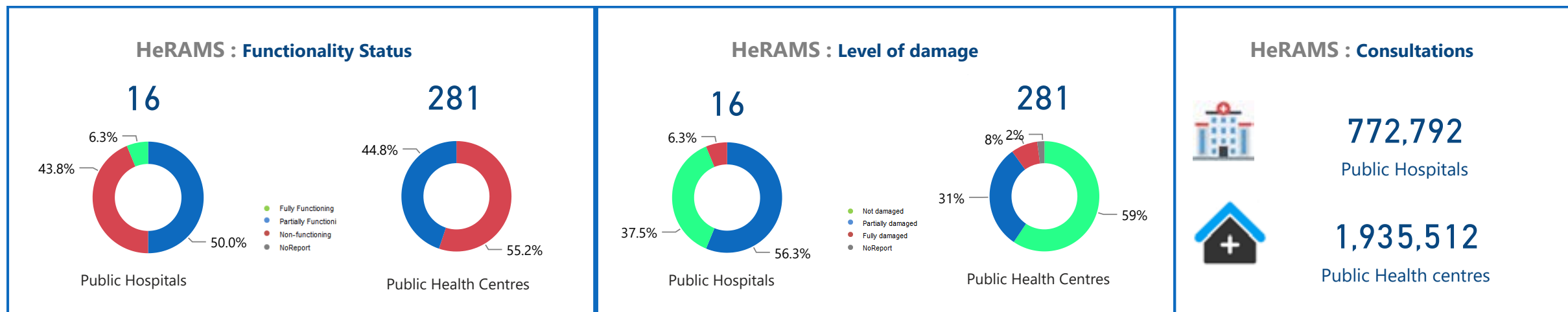




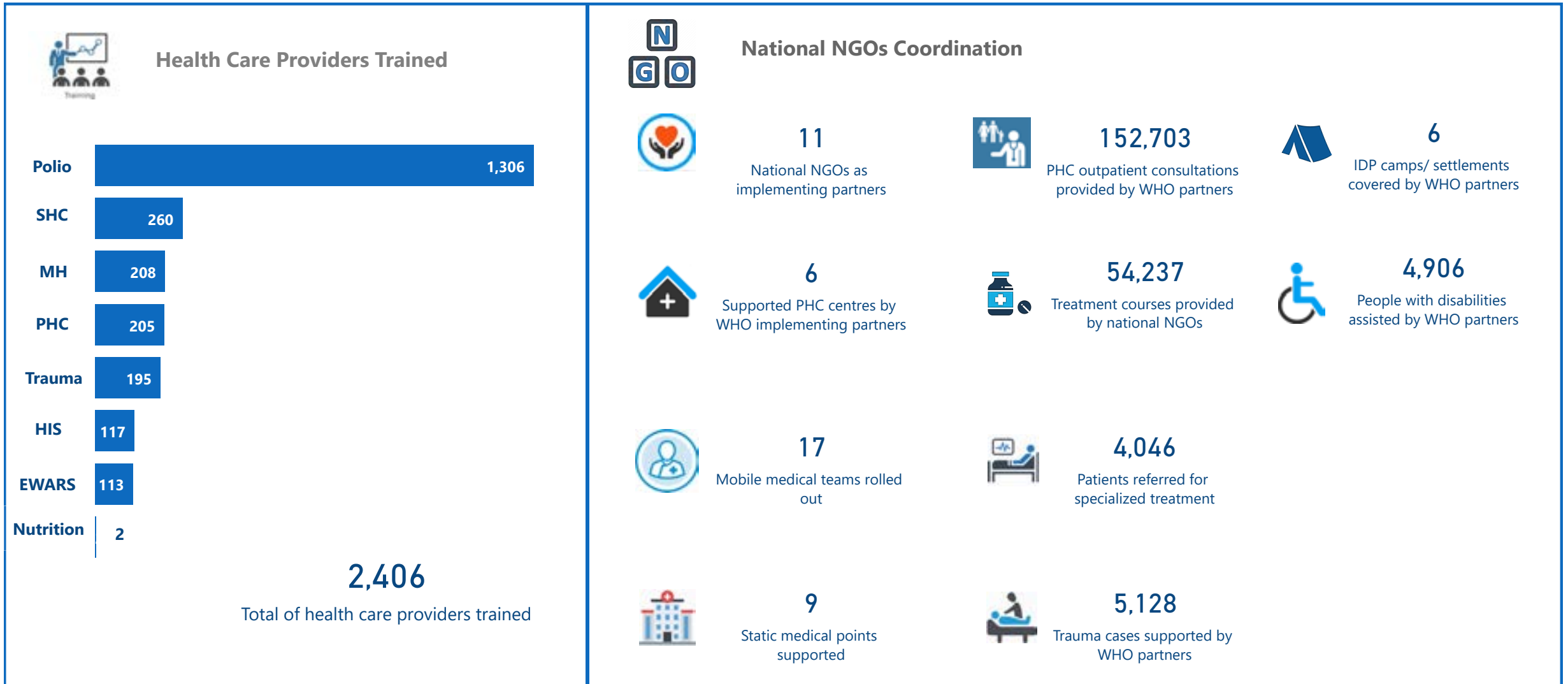
 <p><b>Primary Health Care</b></p> <p><b>2 DoH</b></p> <p>Public PHC facilities/DoH received medical equipment and supplies directly by WHO</p> <p><b>10</b></p> <p>Rolled out DoH/SARC mobile medical teams/clinics</p>	 <p><b>M&amp;E</b></p> <p><b>361</b></p> <p>Field visits (assessments, supervision, monitoring and evaluation)</p>	 <p><b>Secondary Health Care</b></p> <p><b>26</b></p> <p>Hospitals were directly supported by WHO with medical equipment and supplies*</p>
---	---	---



\*Other undefined hospitals are supported indirectly throughout MoH and MoHE at central level



Total regular deliveries across the country			Inter-agency convoys		
<p><b>282</b></p> <p>Total number of regular deliveries</p>	<p>Total weight (tons) of supplies delivered <b>353.89</b></p>		<p><b>0</b></p> <p>Total number of IA convoys</p>	<p>Total weight (tons) of supplies delivered <b>0</b></p>	
	<p>179.39</p> <p>Medicines</p>	<p>28.50</p> <p>Equipment</p>		<p>0</p> <p>Medicines</p>	<p>0</p> <p>Equipment</p>
<p><b>1,604,120</b></p> <p>Total number of treatment courses delivered</p>	<p>120.33</p> <p>Kits</p>	<p>25.67</p> <p>Non-medical supplies (WASH, Nutrition, and others)</p>	<p><b>0</b></p> <p>Total number of treatment courses provided</p>	<p>0</p> <p>Kits</p>	<p>0</p> <p>Non-medical supplies (WASH, Nutrition, and others)</p>



The boundaries and names shown and the designations used on this map do not imply the expression of any opinion whatsoever on the part of the World Health Organization concerning the legal status of any country, territory, city or area or of its authorities, or concerning the delimitation of its frontiers or boundaries. Dotted and dashed lines on maps represent approximate border lines for which there may not yet be full agreement

Data source: WHO programs, 4Ws  
Map production: Health Information Management Unit, Country office, Syrian Arab Republic