


*North East Syria(AI-Hasakeh,Deir-ez-Zor,Ar-Raqqa)

**Based on public hospital received support from WHO

 **Primary Health Care**

2 DoH

Public PHC facilities/DoH received medical equipment and supplies directly by WHO

10

Rolled out DoH/SARC mobile medical teams/clinics

 **M&E**

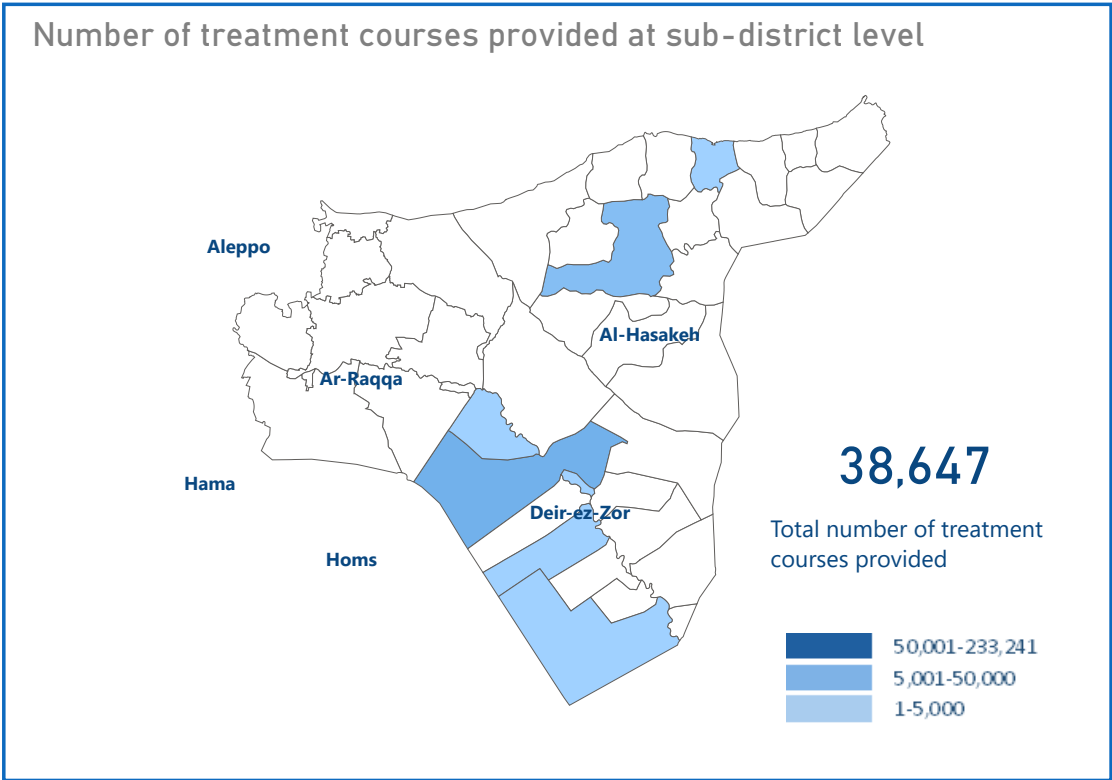
29


Field visits (assessments, supervision, monitoring and evaluation)

 **Secondary Health Care**

1

Hospitals were directly supported by WHO with medical equipment and supplies*



 **EWARS**

280

Sentinel sites

Top 5 reported morbidities


- Influenza Like Illness
- Acute Diarrhea
- Leishmaniasis
- Suspected Hepatitis (Jaundice)
- SARI

Sentinel sites submitting weekly surveillance reports

87.0%

Alerts investigated and responded to in a timely manner

62.7%

 **Attacks on Health care**

0

Number of Attacks

0

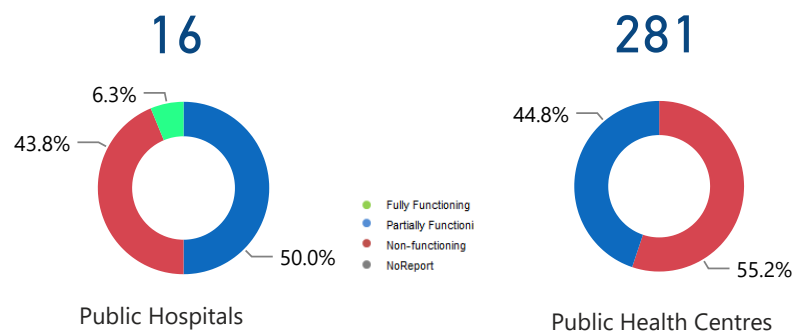
Health workers killed

0

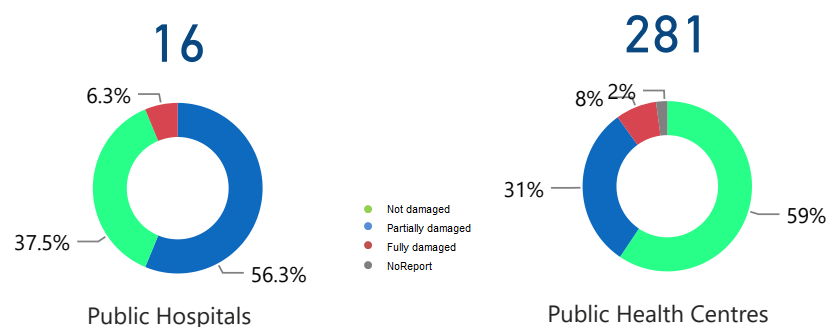
Health workers Injured

*Other undefined hospitals are supported indirectly throughout MoH and MoHE at central level

HeRAMS : Functionality Status



HeRAMS : Level of damage



HeRAMS : Consultations



67,257
Public Hospitals



99,753
Public Health centres



Operations Support and logistic

7

Total number of regular deliveries across the country including IA convoys

6.33

Total weight (tons) of regular deliveries across the country including IA convoys



Total regular deliveries across the country

7

Total number of regular deliveries

Total weight (tons) of supplies delivered **6.33**

5.00

Medicines

1.31

Equipment

27,730

Total number of treatment courses delivered

0.00

Kits

0.02

Non-medical supplies (WASH, Nutrition, and others)



Inter-agency convoys

0

Total number of IA convoys

Total weight (tons) of supplies delivered **0**

0

Medicines

0

Equipment

0

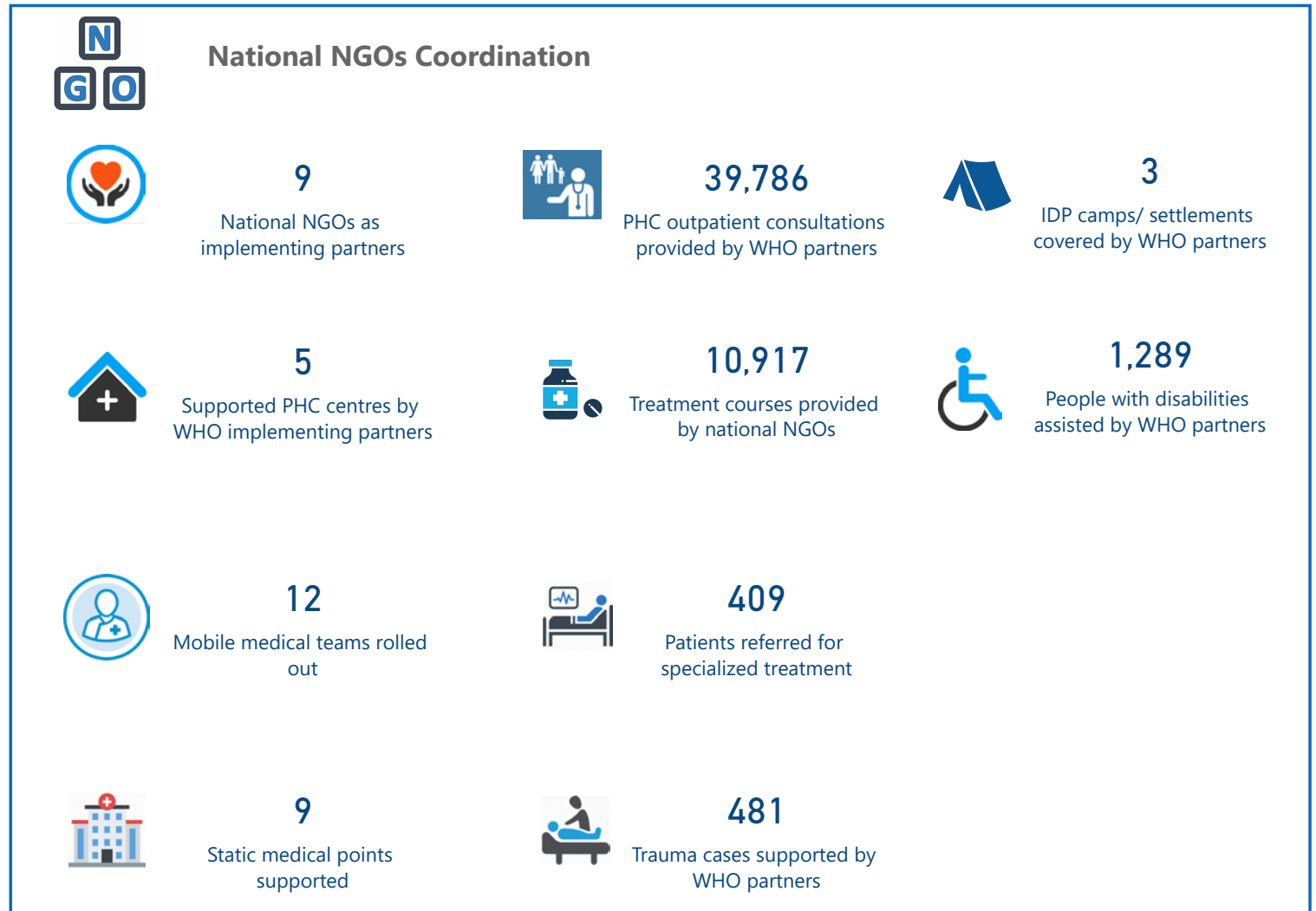
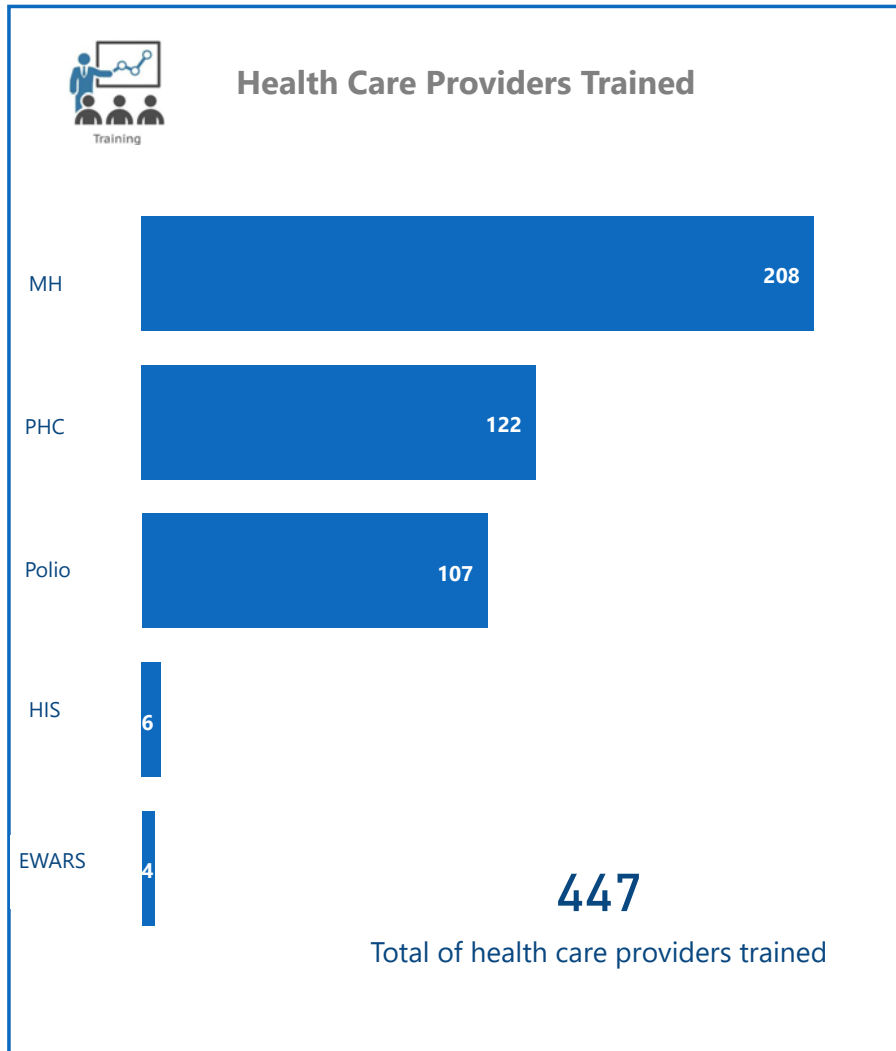
Total number of treatment courses provided

0

Kits

0

Non-medical supplies (WASH, Nutrition, and others)



The boundaries and names shown and the designations used on this map do not imply the expression of any opinion whatsoever on the part of the World Health Organization concerning the legal status of any country, territory, city or area or of its authorities, or concerning the delimitation of its frontiers or boundaries. Dotted and dashed lines on maps represent approximate border lines for which there may not yet be full agreement

Data source: WHO programs, 4Ws
Map production: Health Information Management Unit, Country office, Syrian Arab Republic