



**Trauma**

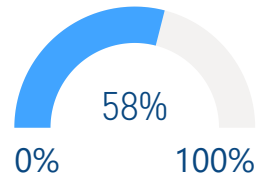
**18,284**

Truma cases supported \*\*



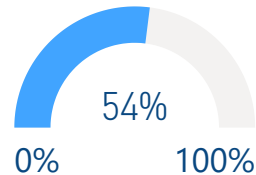
**Immunization**

DPT3 (under 1 y)



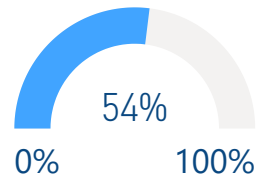
**27,920**

Measles 2 (1-2 y)



**25,928**

Polio 3 (under 1 y)



**25,743**



**Nutrition**

**25**

Stabilization centres are treating patients with severe acute malnutrition (SAM)

**104**

Patients with SAM with medical complications receiving treatment

**827**

Nutrition surveillance centres

**74,848**

Children under 5 screened



**Mental Health**

**5,431**

Mental health and psychosocial support interventions provided by NGOs

**578**

Health facilities and community centres providing MHPSS services

**1,470**

Schools providing MHPSS services Alerts



**Integrated Management of Childhood Illness (IMCI)**

**416**

Working health centres in IMCI

**9,954**

IMCI services



**Newborns care at home (NCH)**

**114**

Health villages working in NCH

**1,779**

Home visits

**20**

Referred mothers and new born to specialized care



**Neonatal resuscitation (NR):**

**51**

Hospitals working in NR

**6,430**


Newborns

**399**

Referred newborns to specialized care

\*The data in this infographic are for WHO's hub in Damascus only

\*\*Based on public hospital received support from WHO



## Primary Health Care

**2 DoH**

Public PHC facilities/DoH received medical equipment and supplies directly by WHO

**25**


Rolled out DoH/SARC mobile medical teams/clinics



## Health Information

**184**

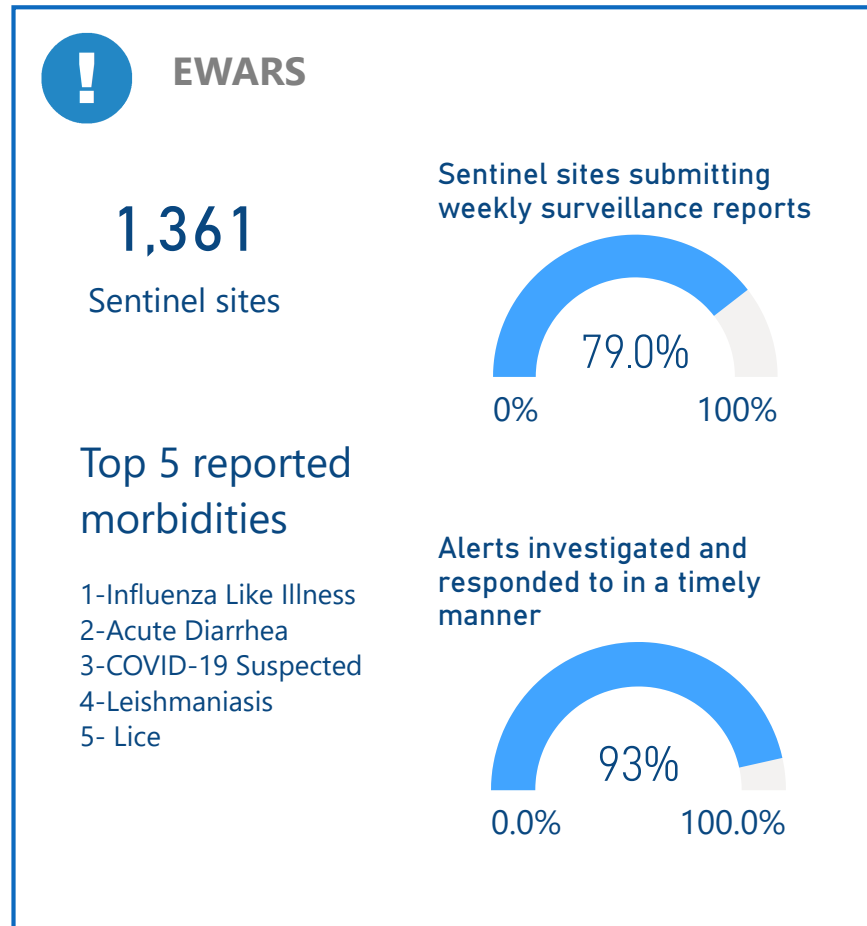
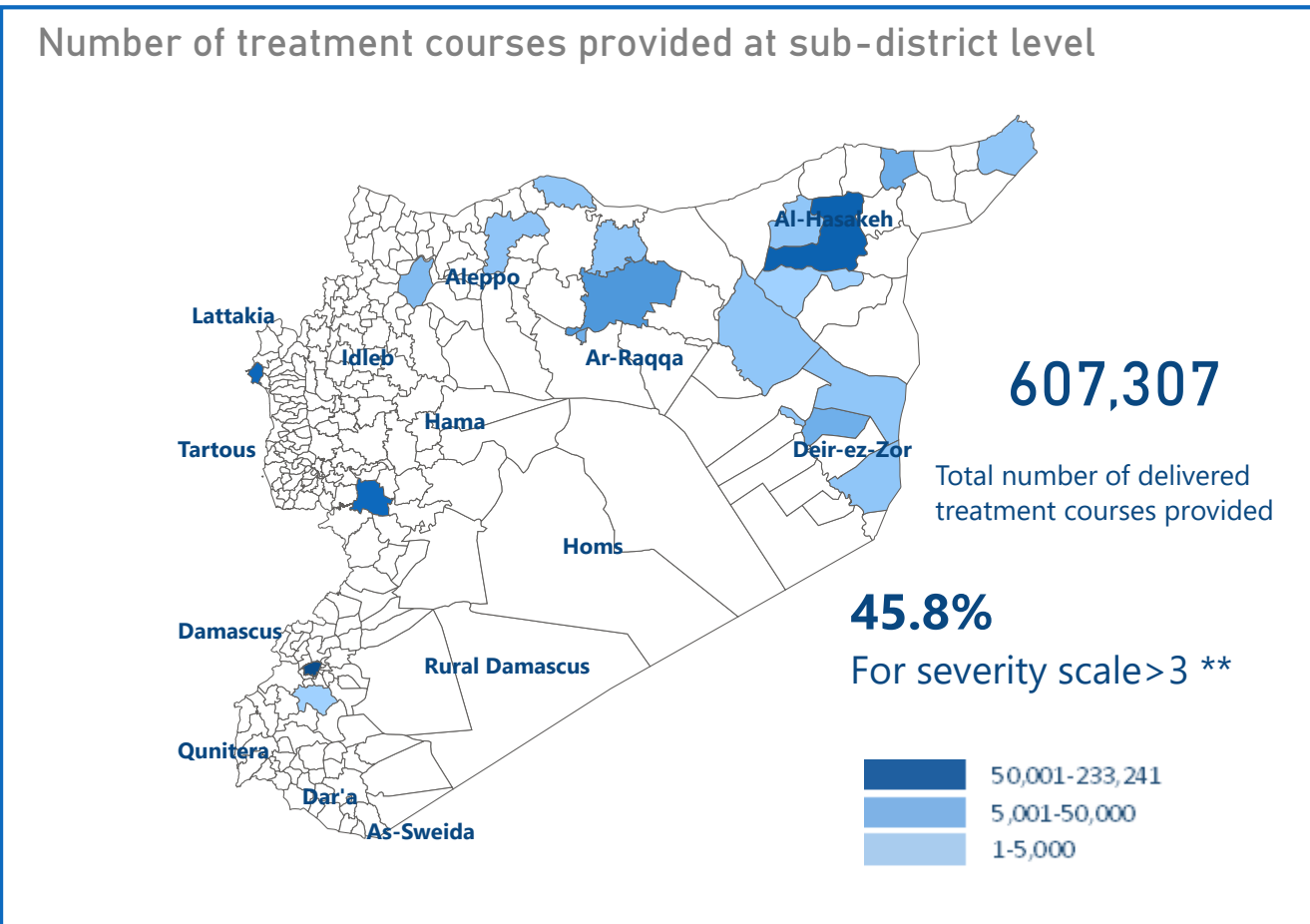

Field visits (assessments, supervision, monitoring and evaluation)



## Secondary Health Care

**53**

Hospitals supported directly by WHO with medical equipment and supplies\*

## Attacks on Health care

**0**

Number of Attacks

**0**

Health workers killed

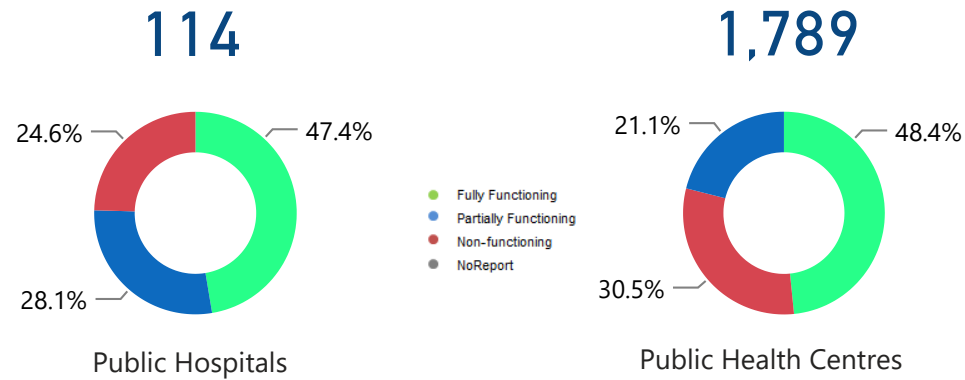
**0**

Health workers Injured

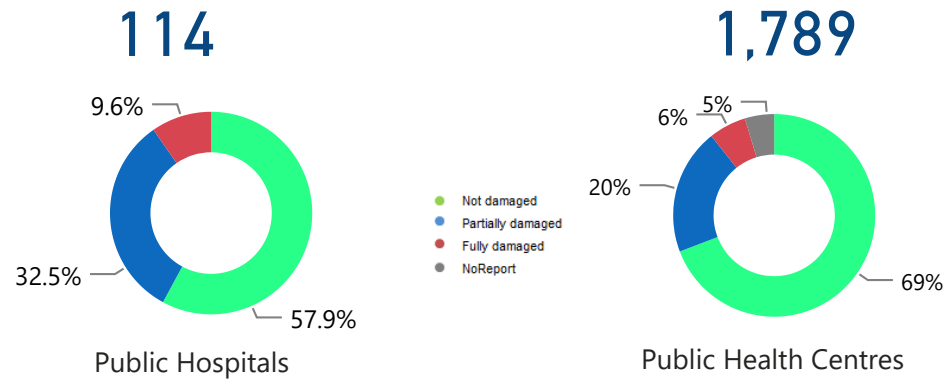
\*Other undefined hospitals are supported indirectly throughout MoH and MoHE at central level

\*\* Data source: Health Sector Severity Scale January 2021

### HeRAMS : Functionality Status



### HeRAMS : Level of damage



### HeRAMS : Consultations



**527,051**  
Public Hospitals



**920,041**  
Public Health Centres



### Operations Support and logistic

**83**

Total number of regular deliveries across the country including IA convoys

**183.77**

Total weight (tons) of regular deliveries across the country including IA convoys



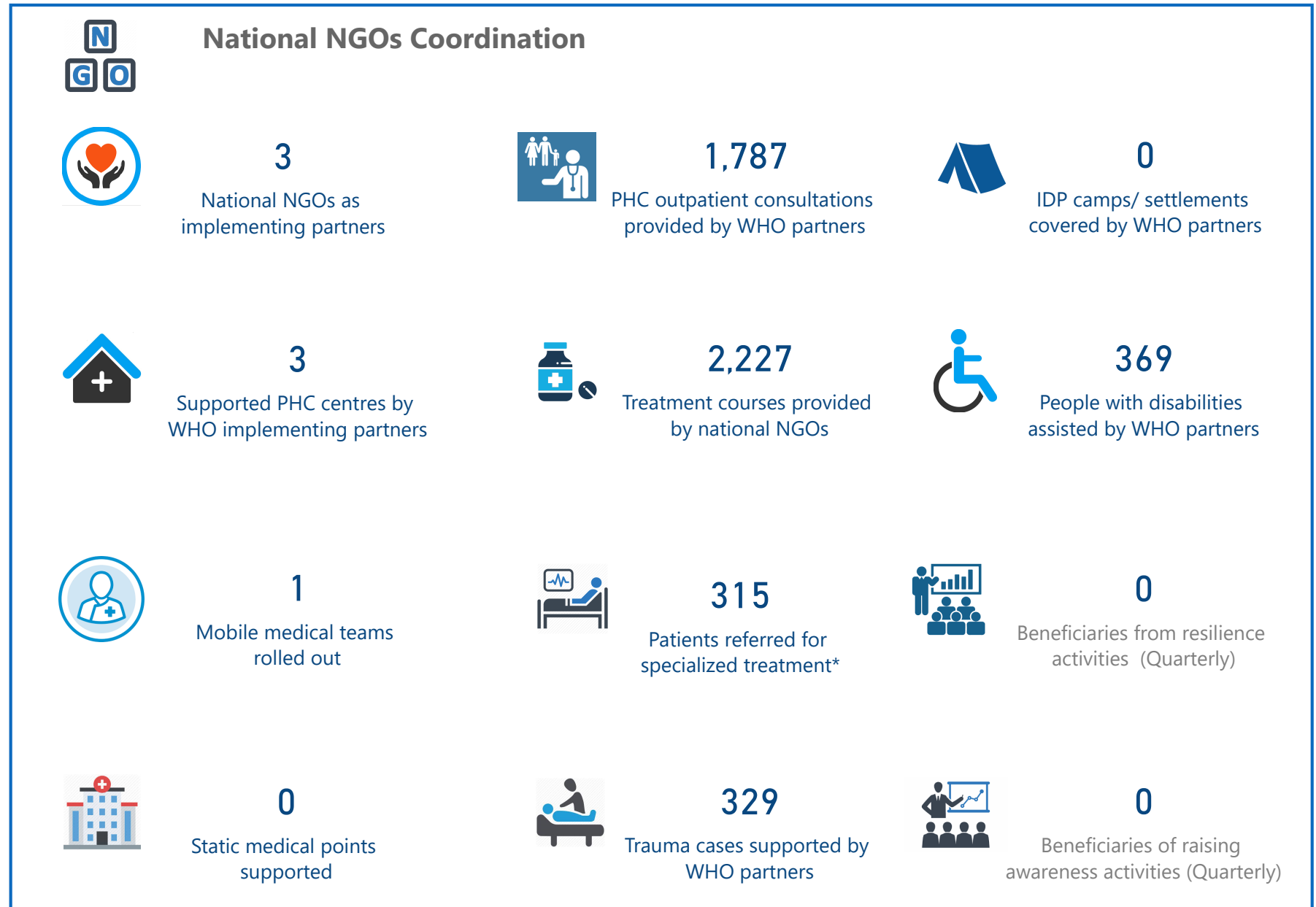
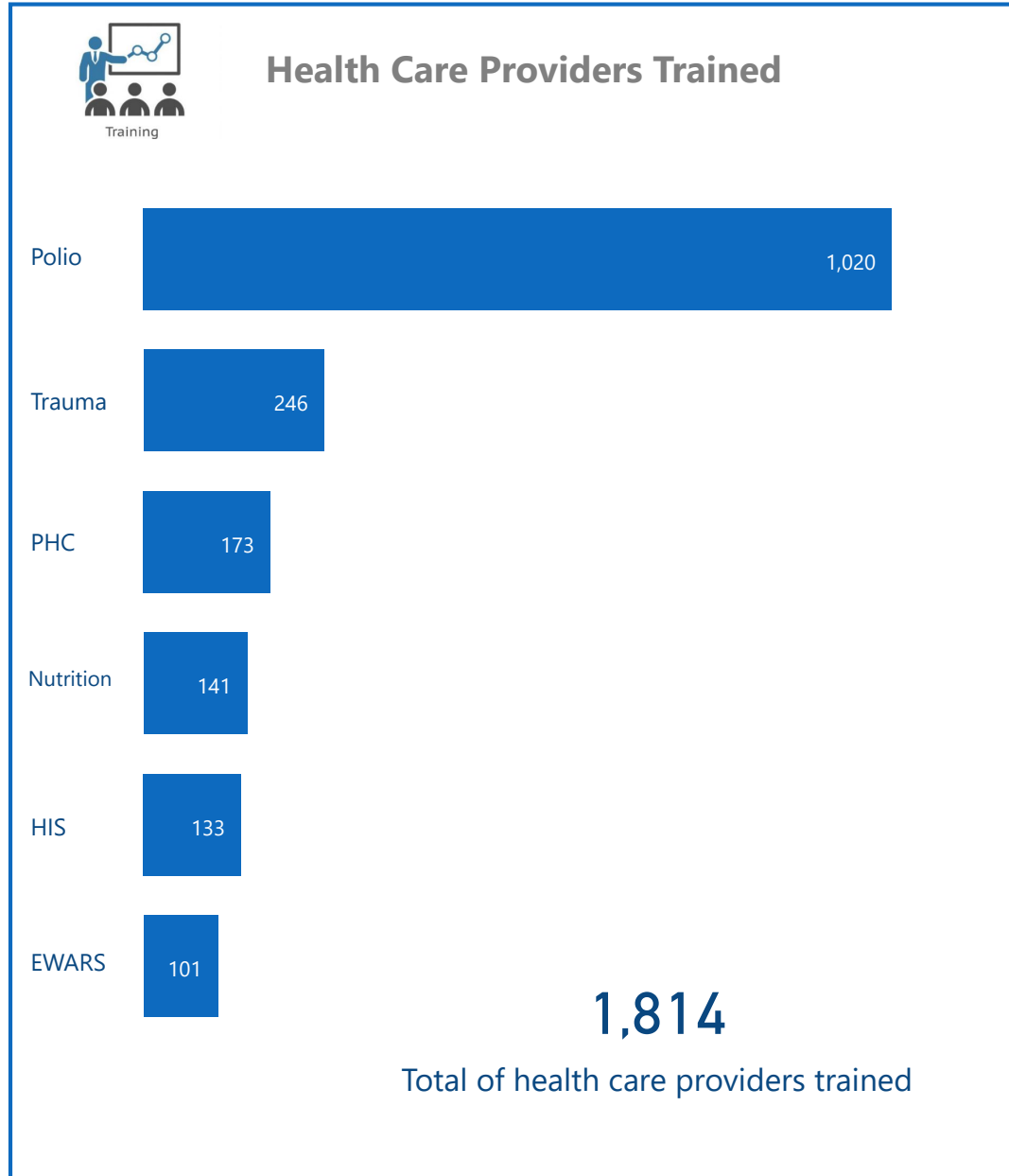
### Total regular deliveries across the country

	Total weight (tons) of supplies delivered <b>183.77</b>		
<b>83</b> Total number of regular deliveries	<b>38.07</b> Medicines	<b>2.38</b> Equipment	
<b>605,080</b> Total number of treatment courses delivered	<b>38.94</b> Kits	<b>104.38</b> Non-medical supplies (WASH, Nutrition, and others)	



### Inter-agency convoys

	Total weight (tons) of supplies delivered <b>0.00</b>		
<b>0</b> Total number of IA convoys	<b>0</b> Medicines	<b>0</b> Equipment	
<b>0</b> Total number of treatment courses delivered	<b>0</b> Kits	<b>0</b> Non-medical supplies (WASH, Nutrition, and others)	



The boundaries and names shown and the designations used on this map do not imply the expression of any opinion whatsoever on the part of the World Health Organization concerning the legal status of any country, territory, city or area or of its authorities, or concerning the delimitation of its frontiers or boundaries. Dotted and dashed lines on maps represent approximate border lines for which there may not yet be full agreement

\* referred cases include number of births

Data source: WHO programs, 4Ws  
Map production: Health Information Management Unit, Country office, Syrian Arab Republic