



Trauma

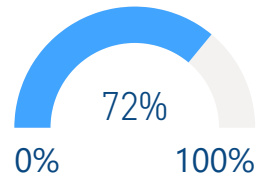
18,502

Truma cases supported **



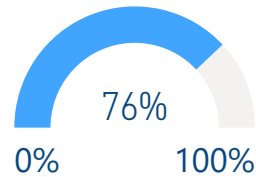
Immunization

DPT3 (under 1 y)



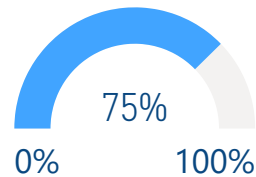
34,574

Measles 2 (1-2 y)



36,572

Polio 3 (under 1 y)



35,970



Nutrition

25

Stabilization centres are treating patients with severe acute malnutrition (SAM)

89

Patients with SAM with medical complications receiving treatment

827

Nutrition surveillance centres

121,105

Children under 5 screened



Mental Health

1,580

Mental health and psychosocial support interventions provided by NGOs

578

Health facilities and community centres providing MHPSS services

1,470

Schools providing MHPSS services Alerts



Integrated Management of Childhood Illness (IMCI)

368

Working health centres in IMCI

21,352

IMCI services



Newborns care at home (NCH)

112

Health villages working in NCH

2,107

Home visits

30

Referred mothers and new born to specialized care



Neonatal resuscitation (NR):

51

Hospitals working in NR

7,255


Newborns

1,636

Referred newborns to specialized care

*The data in this infographic are for WHO's hub in Damascus only

**Based on public hospital received support from WHO



Primary Health Care

7 DoH

Public PHC facilities/DoH received medical equipment and supplies directly by WHO

26


Rolled out DoH/SARC mobile medical teams/clinics



Health Information

152

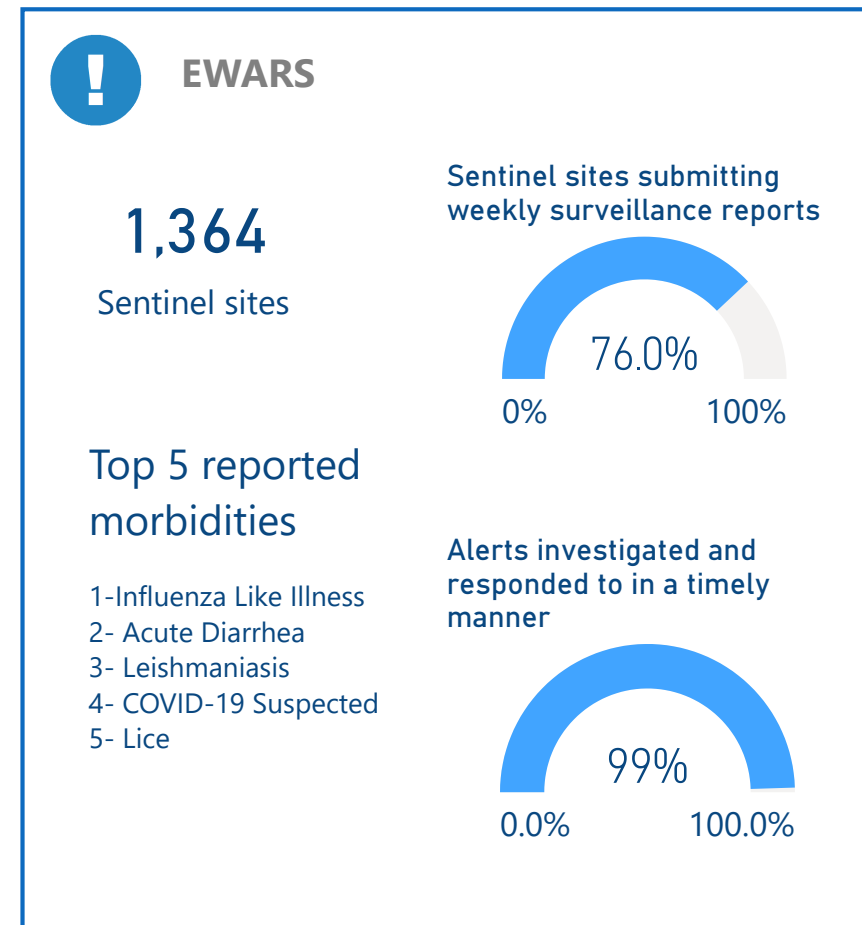
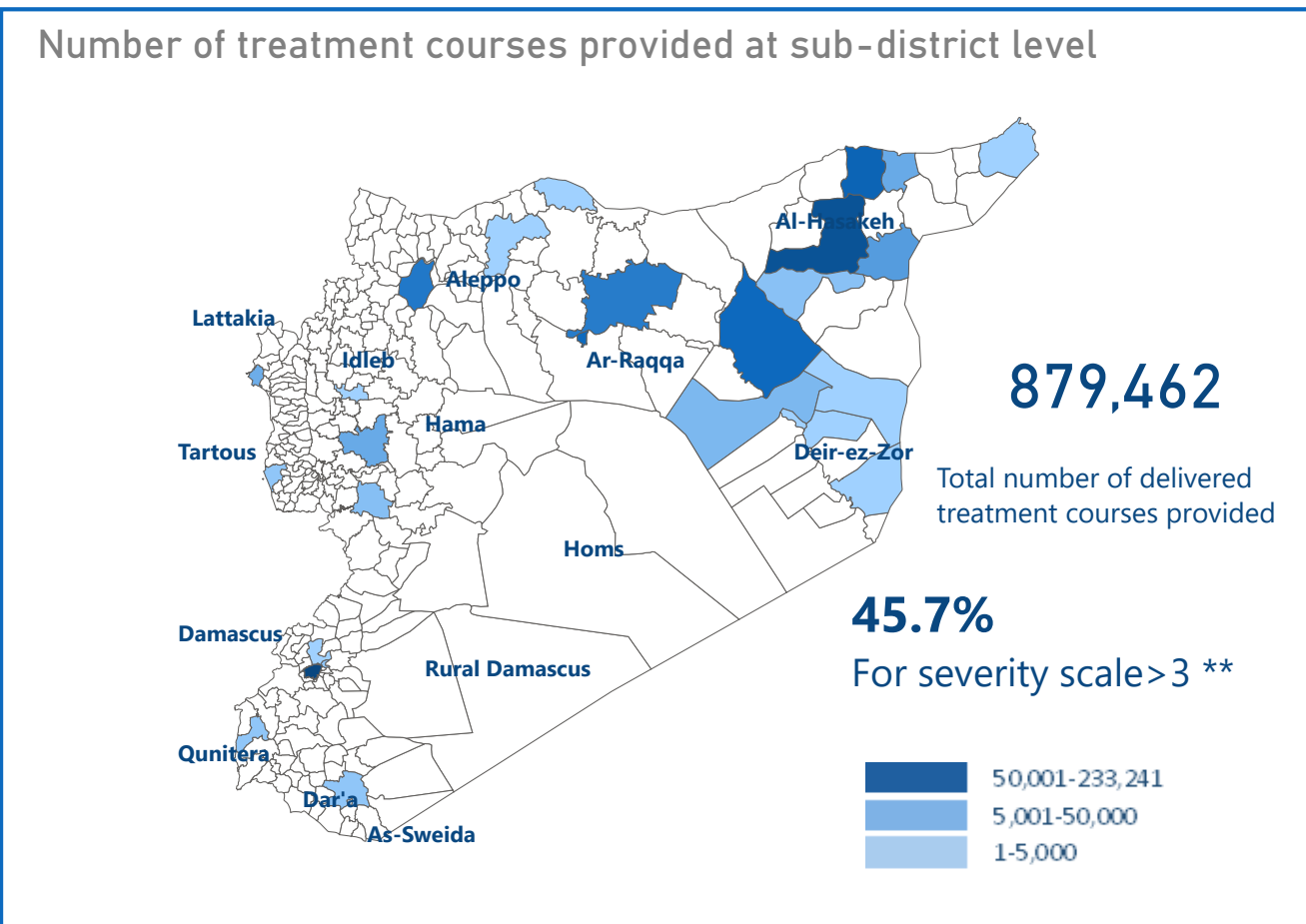
Field visits (assessments, supervision, monitoring and evaluation)



Secondary Health Care

41

Hospitals supported directly by WHO with medical equipment and supplies*




Attacks on Health care

0

Number of Attacks

0

Health workers killed

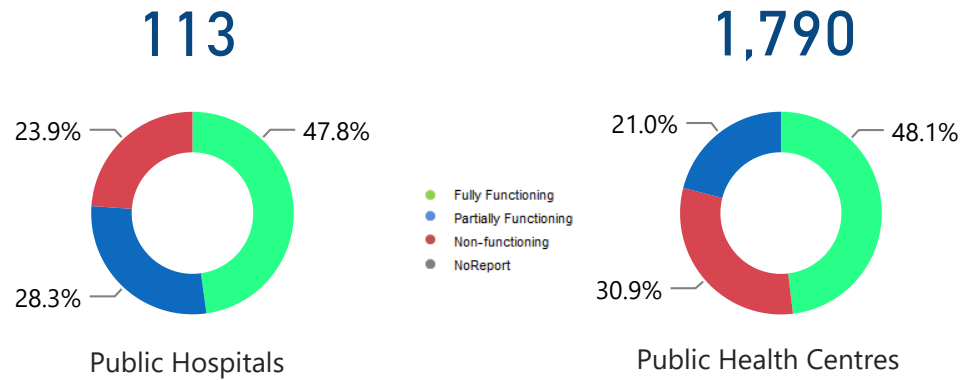
0

Health workers Injured

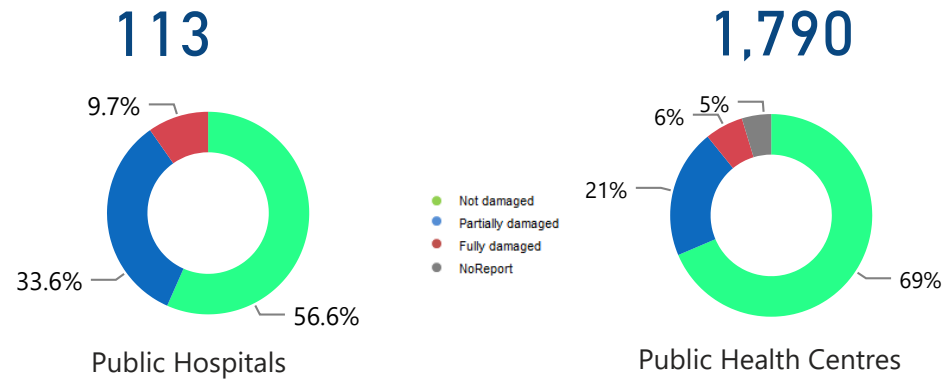
*Other undefined hospitals are supported indirectly throughout MoH and MoHE at central level

** Data source: Health Sector Severity Scale January 2021

HeRAMS : Functionality Status



HeRAMS : Level of damage



HeRAMS : Consultations



390,571
Public Hospitals



916,198
Public Health Centres



Operations Support and logistic

109

Total number of regular deliveries across the country including IA convoys

207.96

Total weight (tons) of regular deliveries across the country including IA convoys



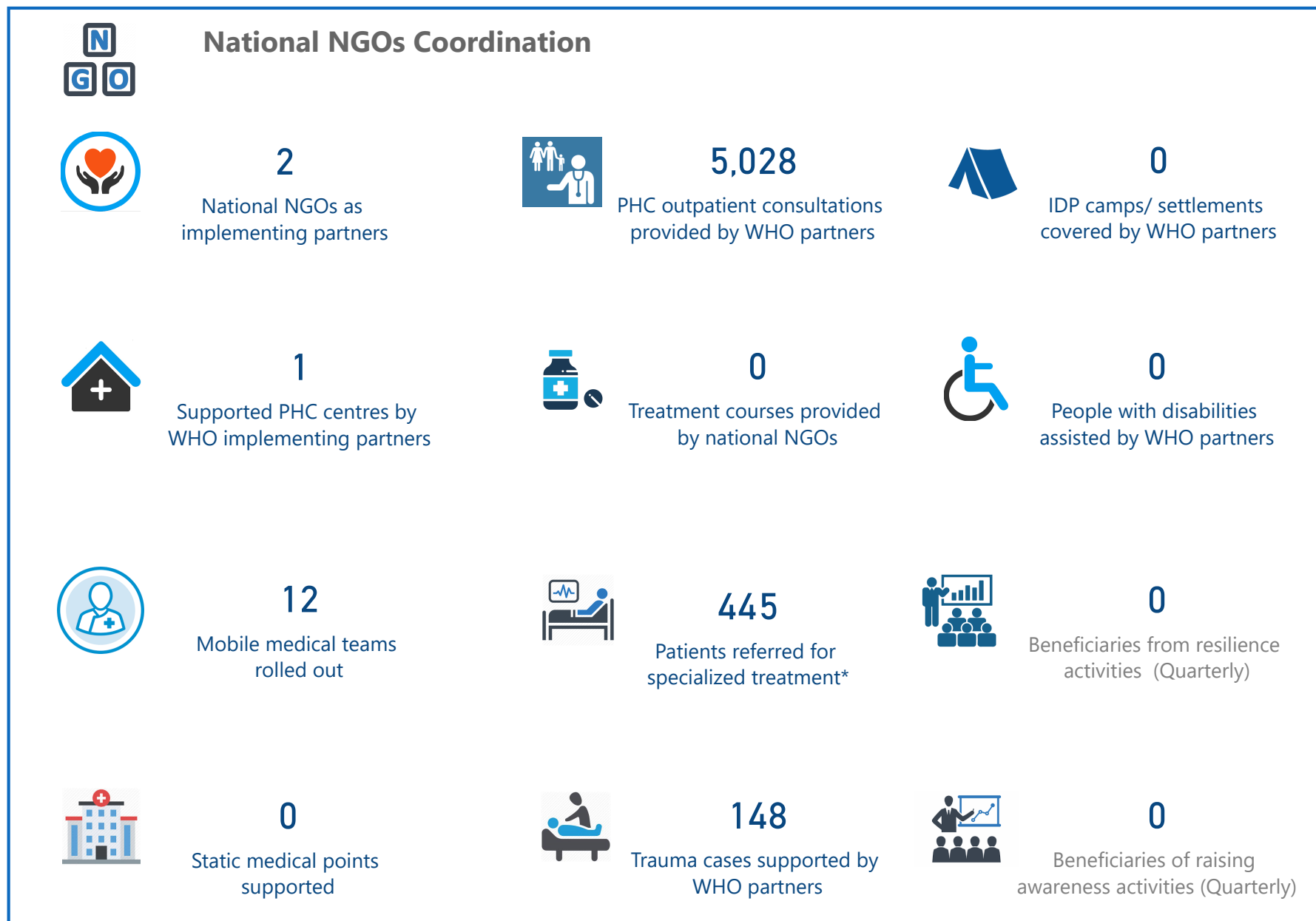
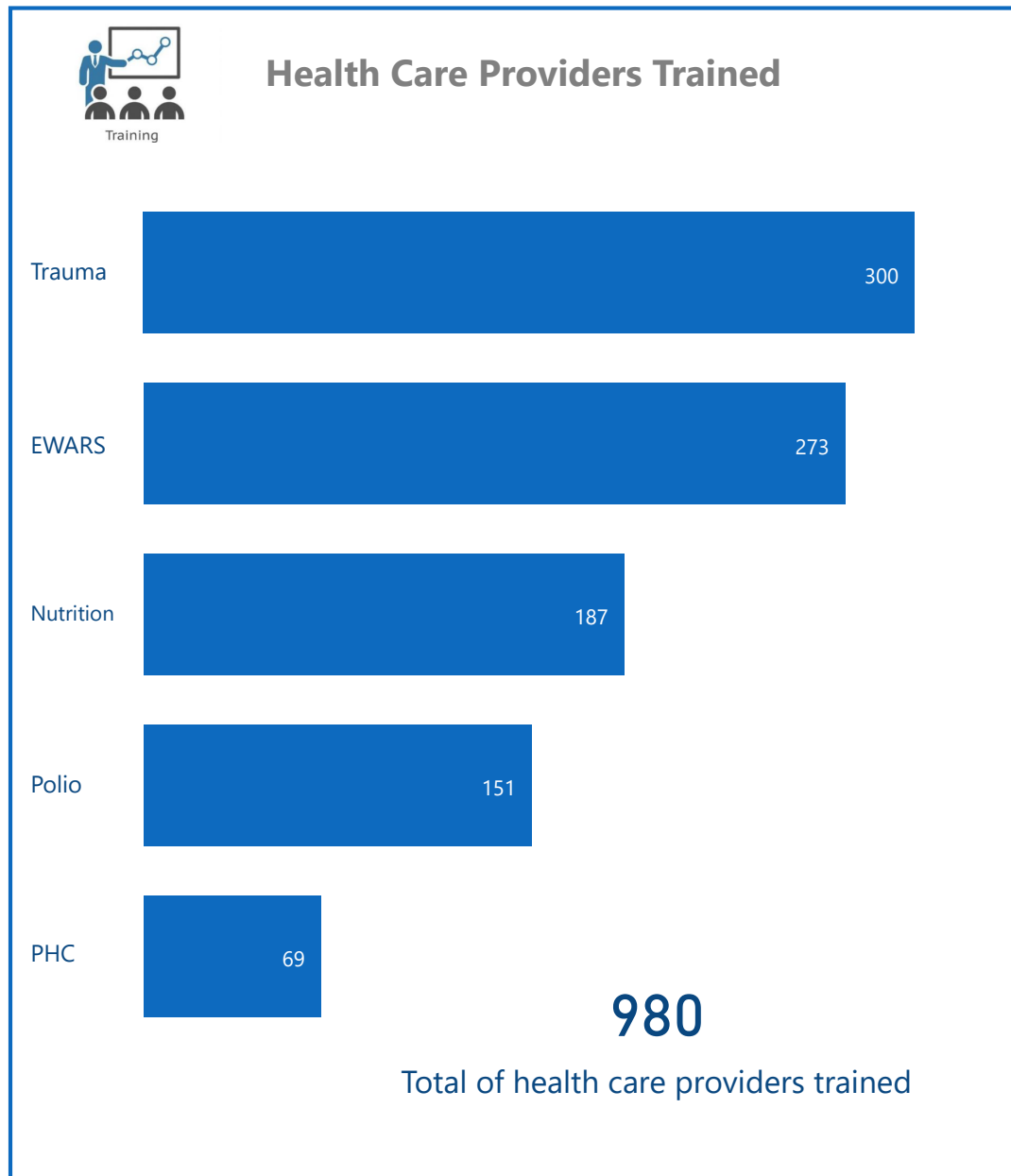
Total regular deliveries across the country

	Total weight (tons) of supplies delivered 207.96		
109 Total number of regular deliveries	144.52 Medicines	46.54 Equipment	
879,462 Total number of treatment courses delivered	13.66 Kits	3.24 Non-medical supplies (WASH, Nutriton, and others)	



Inter-agency convoys

	Total weight (tons) of supplies delivered 0.00		
0 Total number of IA convoys	0 Medicines	0 Equipment	
0 Total number of treatment courses delivered	0 Kits	0 Non-medical supplies (WASH, Nutriton, and others)	



The boundaries and names shown and the designations used on this map do not imply the expression of any opinion whatsoever on the part of the World Health Organization concerning the legal status of any country, territory, city or area or of its authorities, or concerning the delimitation of its frontiers or boundaries. Dotted and dashed lines on maps represent approximate border lines for which there may not yet be full agreement

* referred cases include number of births

Data source: WHO programs, 4Ws
Map production: Health Information Management Unit, Country office, Syrian Arab Republic