

Trauma

7,088

Truma cases supported **




Nutrition

25
Stabilization centres are treating patients with severe acute malnutrition (SAM)

86
Patients with SAM with medical complications receiving treatment

827
Nutrition surveillance centres


92,148
Children under 5 screened



Integrated Management of Childhood Illness (IMCI)

359
Working health centres in IMCI

18,937
IMCI services



Immunization

DPT3 (under 1 y)

29,388

62%

0% 100%

Measles 2 (1-2 y)

29,569

62%


0% 100%

Polio 3 (under 1 y)

29,715

62%

0% 100%



Mental Health

3,128
Mental health and psychosocial support interventions provided by NGOs

578
Health facilities and community centres providing MHPSS services

1,470
Schools providing MHPSS services Alerts



Newborns care at home (NCH)

112
Health villages working in NCH

1,683
Home visits

17
Referred mothers and new born to specialized care



Neonatal resuscitation (NR):


47
Hospitals working in NR

6,126
Newborns

1,516
Referred newborns to specialized care

*The data in this infographic are for WHO's hub in Damascus only

**Based on public hospital received support from WHO



Primary Health Care

1 DoH

Public PHC facilities/DoH received medical equipment and supplies directly by WHO

26

Rolled out DoH/SARC mobile medical teams/clinics



Health Information

135

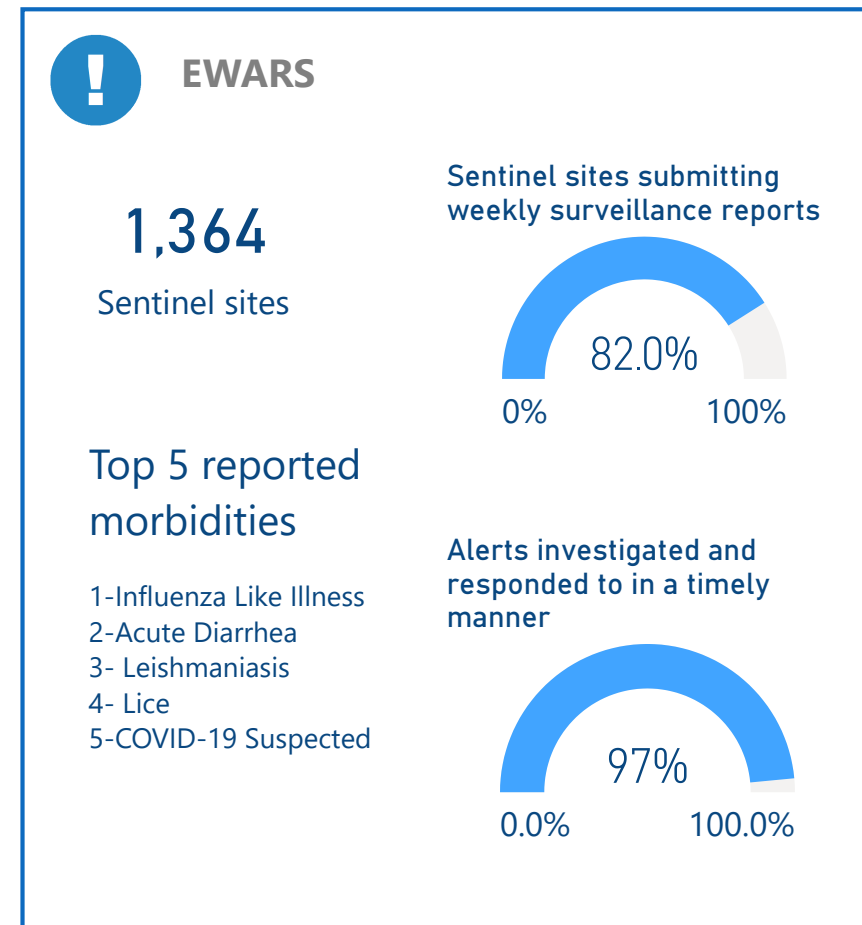
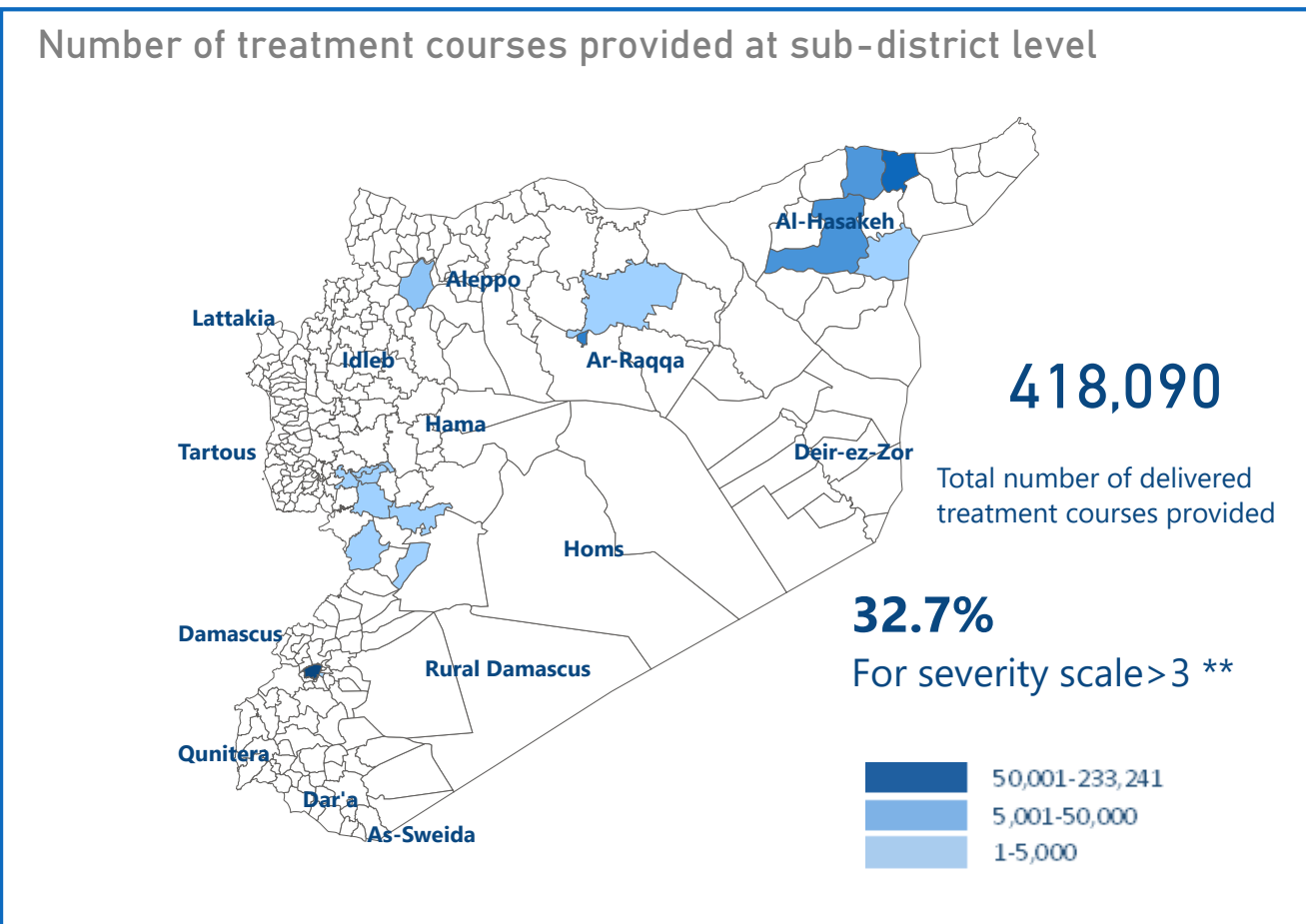
Field visits (assessments, supervision, monitoring and evaluation)



Secondary Health Care

19

Hospitals supported directly by WHO with medical equipment and supplies*




Attacks on Health care

1

Number of Attacks

0

Health workers killed

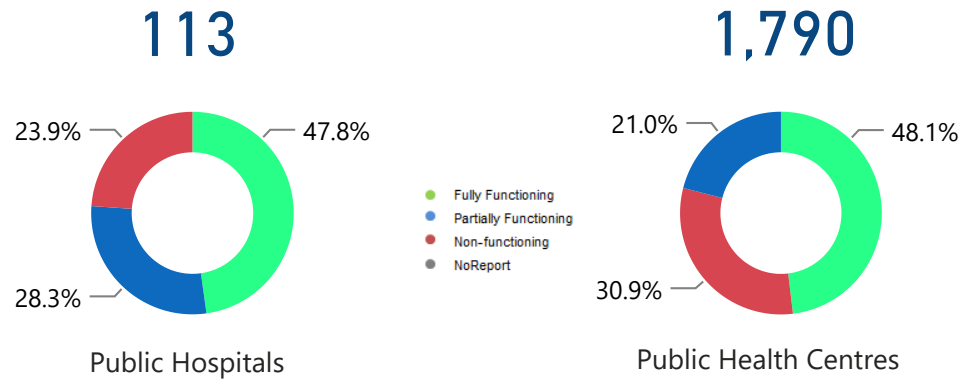
0

Health workers Injured

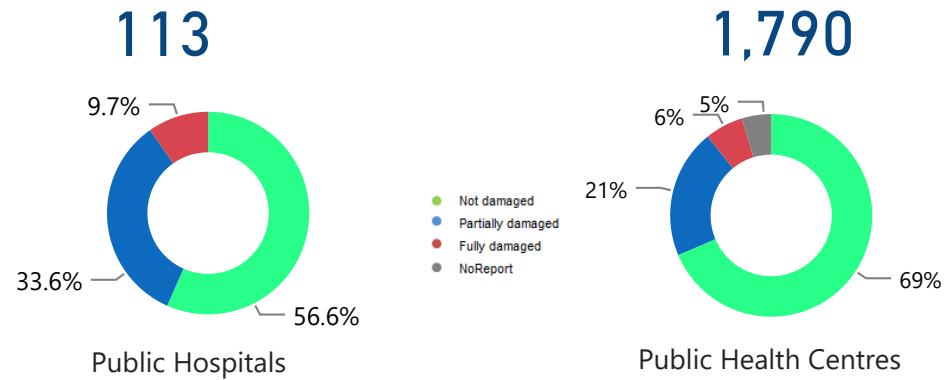
*Other undefined hospitals are supported indirectly throughout MoH and MoHE at central level

** Data source: Health Sector Severity Scale January 2021

HeRAMS : Functionality Status



HeRAMS : Level of damage



HeRAMS : Consultations



390,571
Public Hospitals



916,198
Public Health Centres



Operations Support and logistic

58

Total number of regular deliveries across the country including IA convoys

153.47

Total weight (tons) of regular deliveries across the country including IA convoys



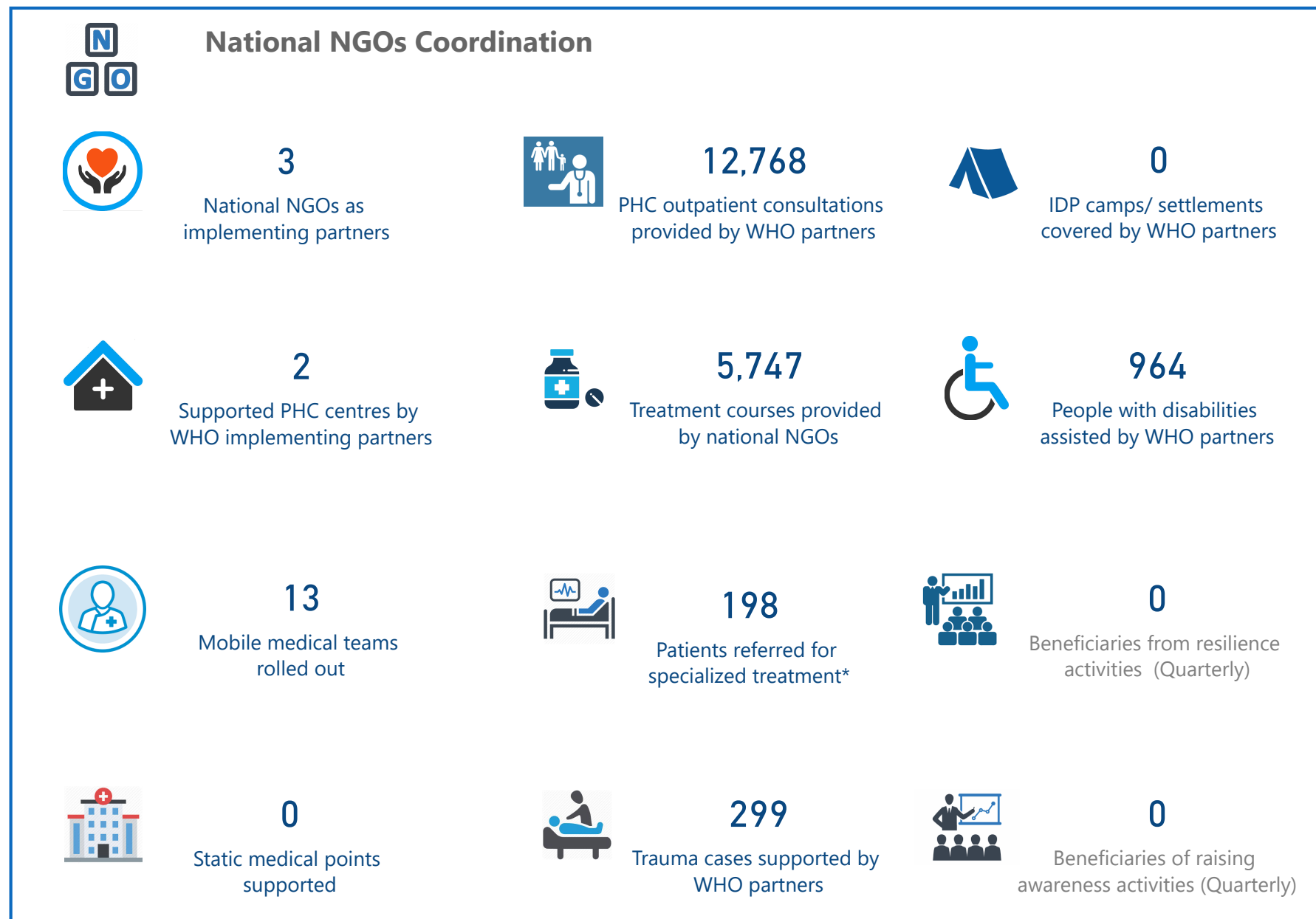
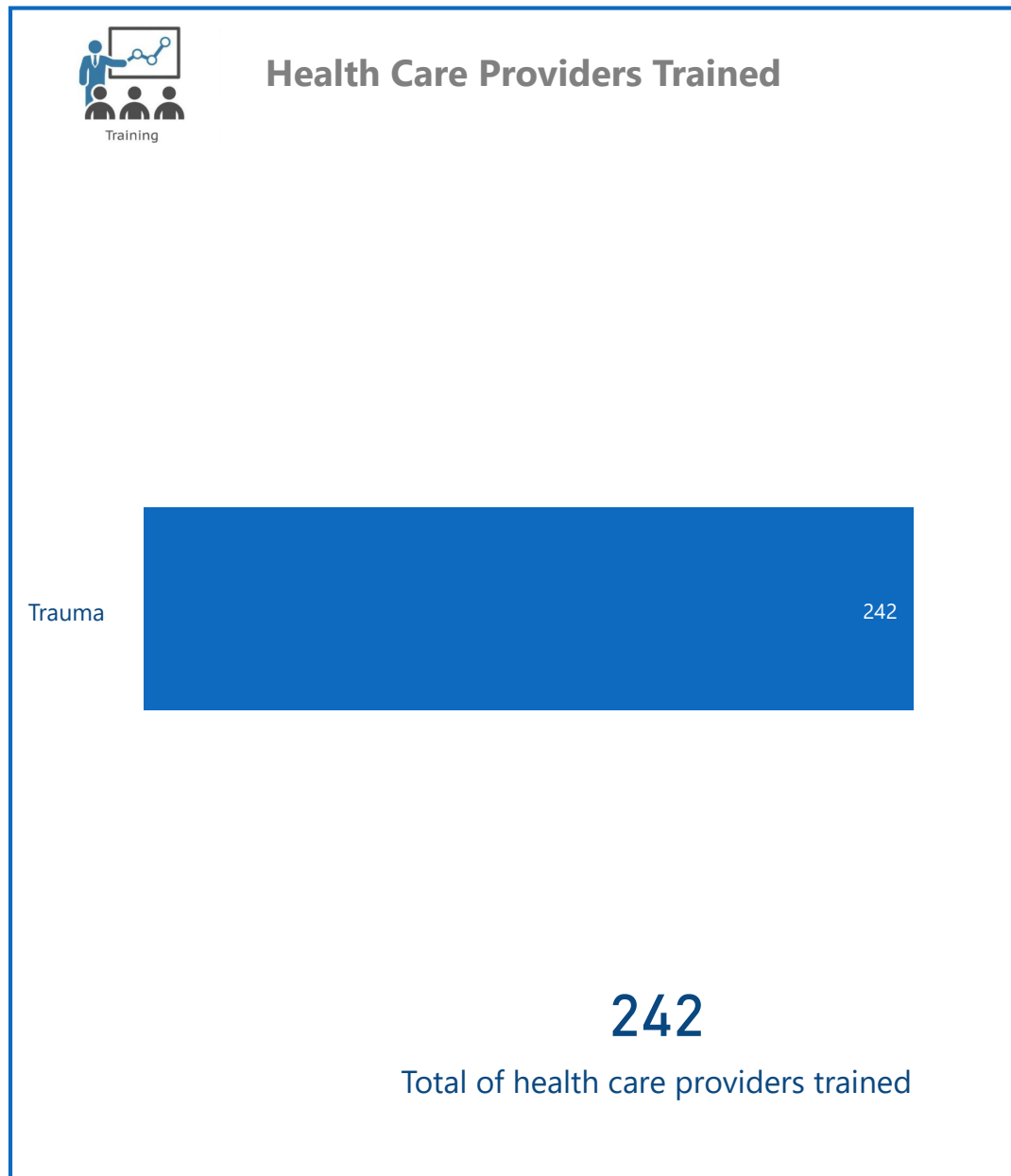
Total regular deliveries across the country

	Total weight (tons) of supplies delivered 153.47		
58 Total number of regular deliveries	145.48 Medicines	1.33 Equipment	
412,343 Total number of treatment courses delivered	2.25 Kits	4.41 Non-medical supplies (WASH, Nutriton, and others)	



Inter-agency convoys

	Total weight (tons) of supplies delivered 0.00		
0 Total number of IA convoys	0 Medicines	0 Equipment	
0 Total number of treatment courses delivered	0 Kits	0 Non-medical supplies (WASH, Nutriton, and others)	



The boundaries and names shown and the designations used on this map do not imply the expression of any opinion whatsoever on the part of the World Health Organization concerning the legal status of any country, territory, city or area or of its authorities, or concerning the delimitation of its frontiers or boundaries. Dotted and dashed lines on maps represent approximate border lines for which there may not yet be full agreement

* referred cases include number of births

Data source: WHO programs, 4Ws
Map production: Health Information Management Unit, Country office, Syrian Arab Republic