



Trauma

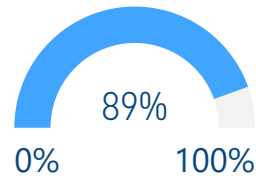
14,684

Truma cases supported **



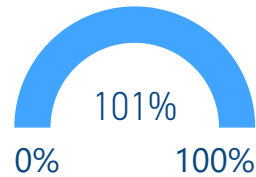
Immunization

DPT3 (under 1 y)



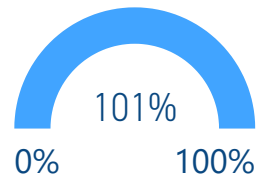
42,673

Measles 2 (1-2 y)



48,296

Polio 3 (under 1 y)



48,414



Nutrition

25

Stabilization centres are treating patients with severe acute malnutrition (SAM)

84

Patients with SAM with medical complications receiving treatment

827

Nutrition surveillance centres

121,105

Children under 5 screened



Mental Health

4,216

Mental health and psychosocial support interventions provided by NGOs

578

Health facilities and community centres providing MHPSS services

1,470

Schools providing MHPSS services Alerts



Integrated Management of Childhood Illness (IMCI)

394

Working health centres in IMCI

12,902

IMCI services



Newborns care at home (NCH)

120

Health villages working in NCH

1,674

Home visits

11

Referred mothers and new born to specialized care



Neonatal resuscitation (NR):

51

Hospitals working in NR

6,237

Newborns

1,440

Referred newborns to specialized care

*The data in this infographic are for WHO's hub in Damascus only

**Based on public hospital received support from WHO



Primary Health Care

5 DoH

Public PHC facilities/DoH received medical equipment and supplies directly by WHO

25

Rolled out DoH/SARC mobile medical teams/clinics



Health Information

157

Field visits (assessments, supervision, monitoring and evaluation)

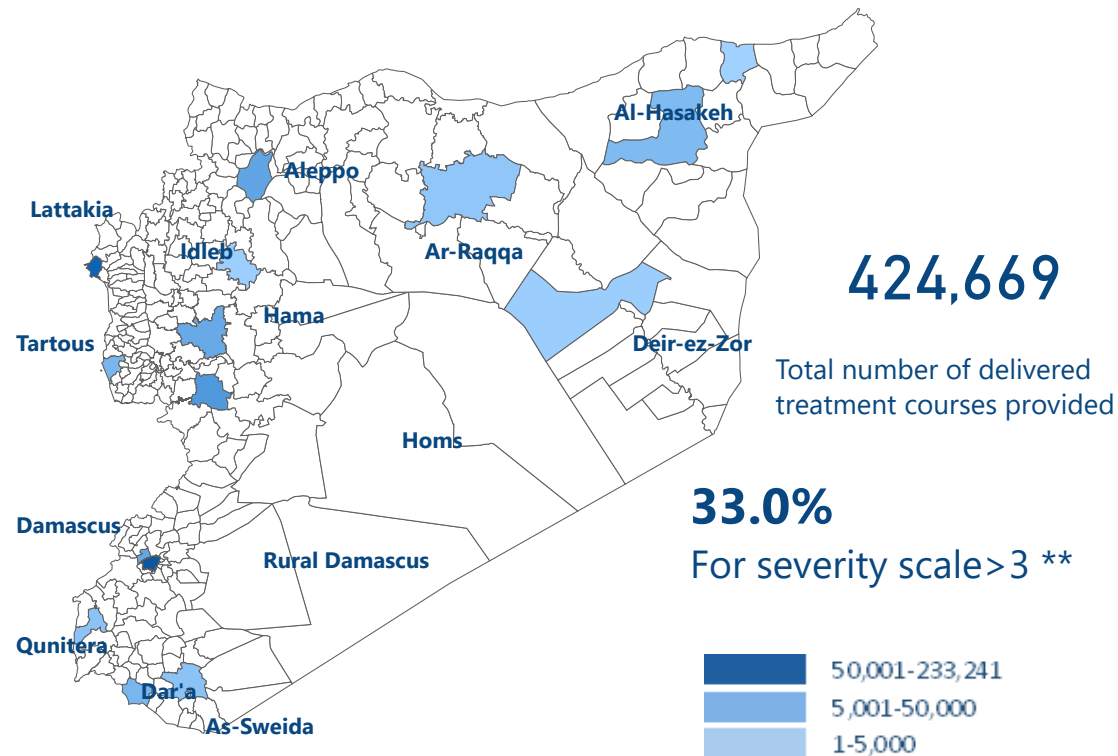


Secondary Health Care

22

Hospitals supported directly by WHO with medical equipment and supplies*

Number of treatment courses provided at sub-district level

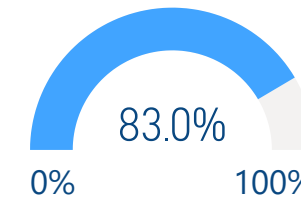


EWARS

1,361

Sentinel sites

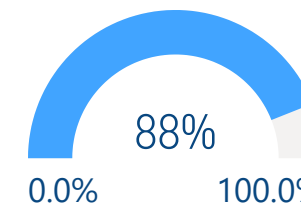
Sentinel sites submitting weekly surveillance reports



Top 5 reported morbidities

- 1-Influenza Like Illness
- 2-Acute Diarrhea
- 3-COVID-19 Suspected
- 4-Leishmaniasis
- 5-Lice

Alerts investigated and responded to in a timely manner



Attacks on Health care

0

Number of Attacks

0

Health workers killed

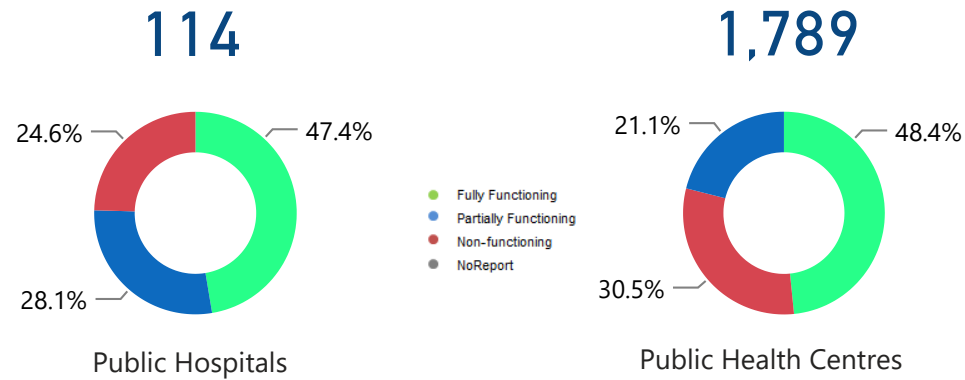
0

Health workers Injured

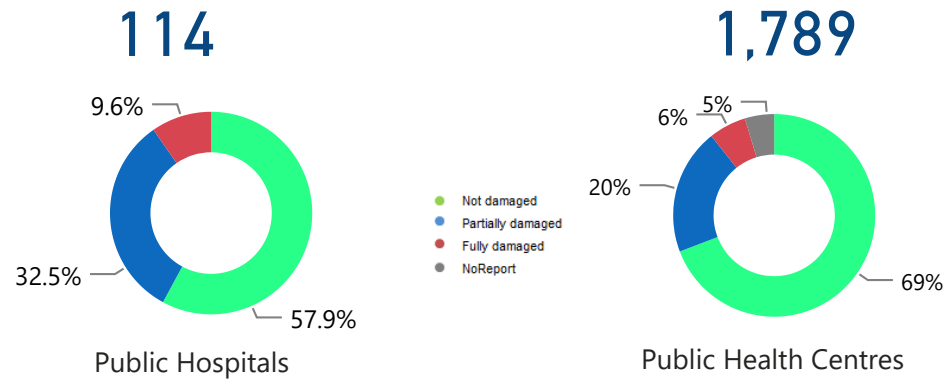
*Other undefined hospitals are supported indirectly throughout MoH and MoHE at central level

** Data source: Health Sector Severity Scale January 2021

HeRAMS : Functionality Status



HeRAMS : Level of damage



HeRAMS : Consultations



527,051
Public Hospitals



920,041
Public Health Centres



Operations Support and logistic

63

Total number of regular deliveries across the country including IA convoys

100.27

Total weight (tons) of regular deliveries across the country including IA convoys



Total regular deliveries across the country

Total weight (tons) of supplies delivered **100.27**

63
Total number of regular deliveries

424,669
Total number of treatment courses delivered

62.29 Medicines	3.27 Equipment
7.55 Kits	27.16 Non-medical supplies (WASH, Nutriton, and others)



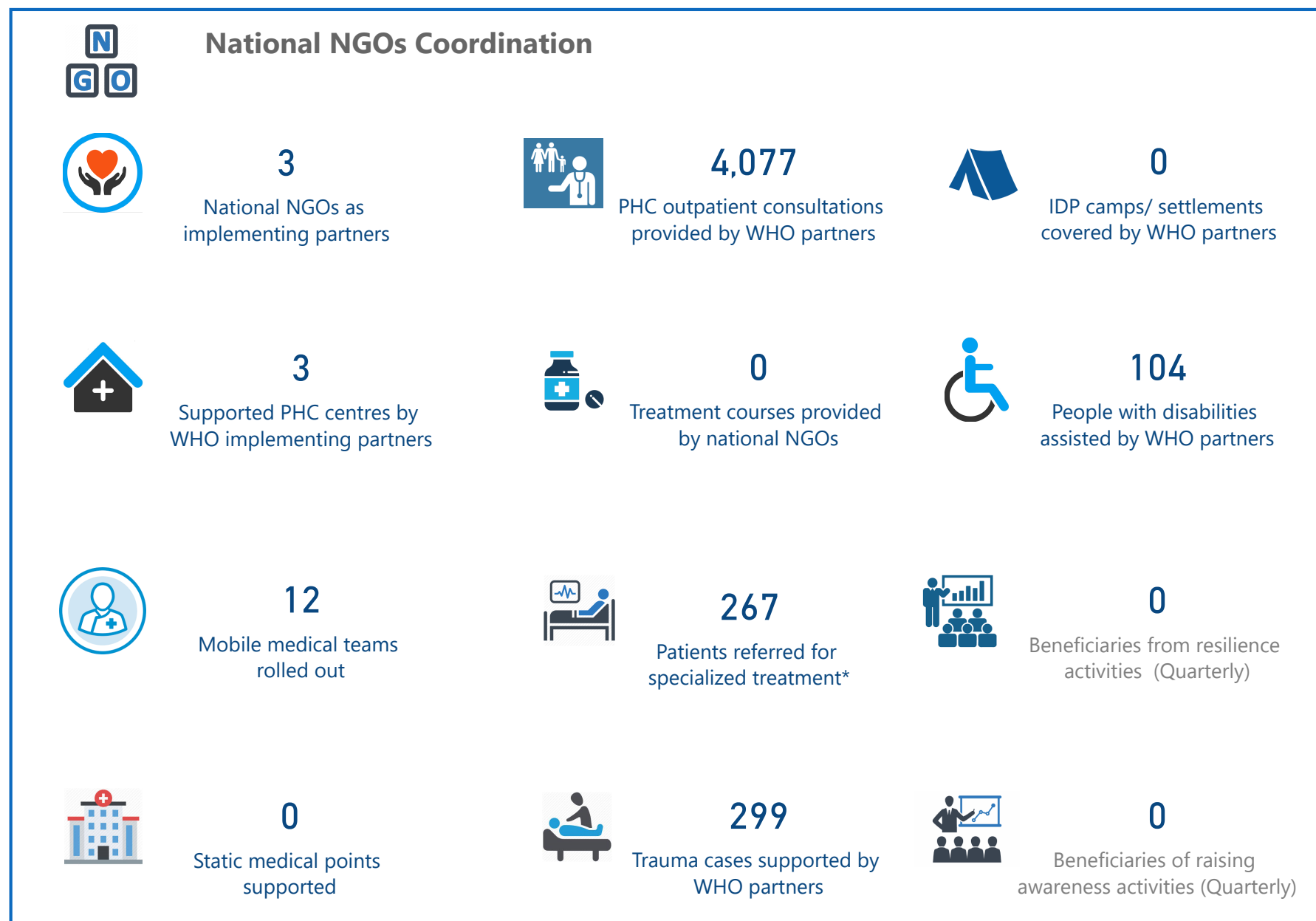
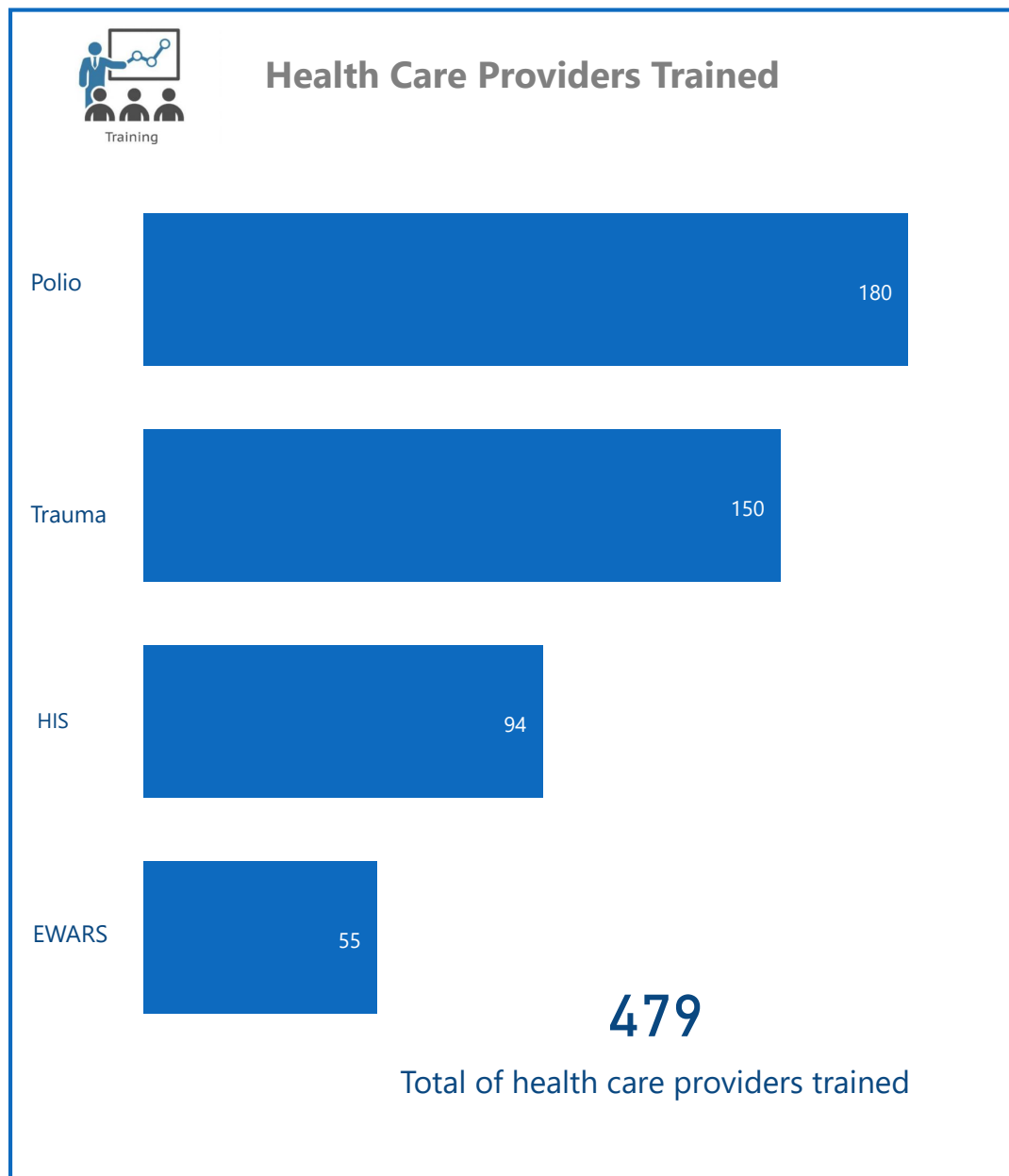
Inter-agency convoys

Total weight (tons) of supplies delivered **0.00**

0
Total number of IA convoys

0
Total number of treatment courses delivered

0 Medicines	0 Equipment
0 Kits	0 Non-medical supplies (WASH, Nutriton, and others)



The boundaries and names shown and the designations used on this map do not imply the expression of any opinion whatsoever on the part of the World Health Organization concerning the legal status of any country, territory, city or area or of its authorities, or concerning the delimitation of its frontiers or boundaries. Dotted and dashed lines on maps represent approximate border lines for which there may not yet be full agreement

* referred cases include number of births

Data source: WHO programs, 4Ws
Map production: Health Information Management Unit, Country office, Syrian Arab Republic