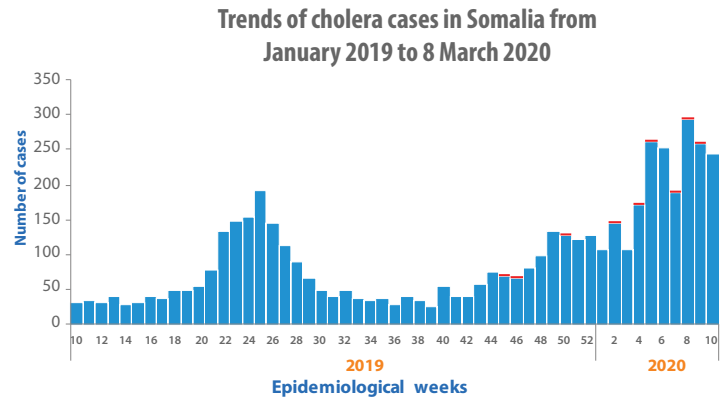


WEEKLY AWD/CHOLERA SITUATION REPORT - SOMALIA

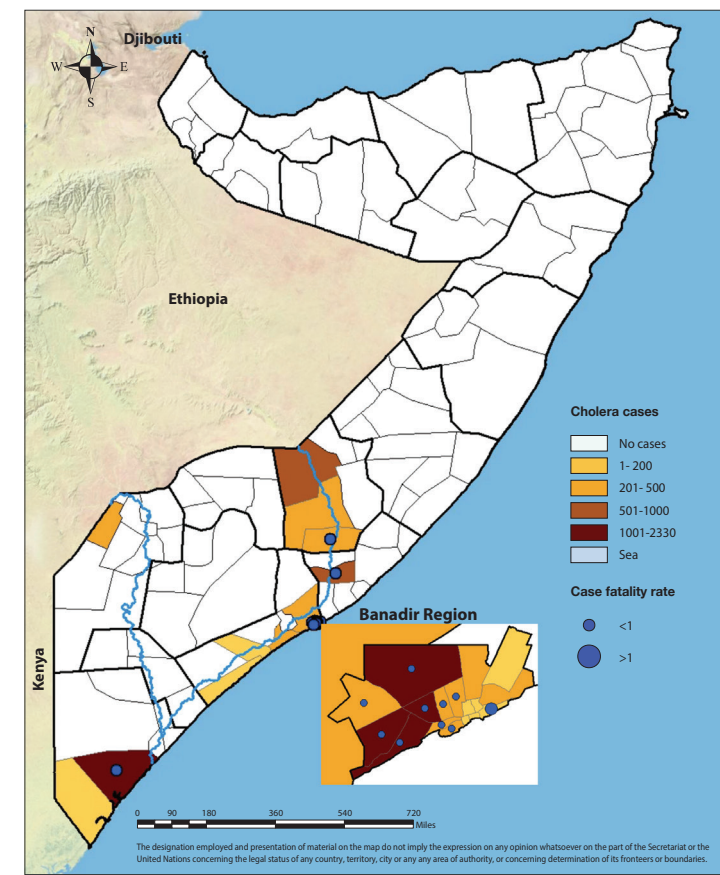
Epidemiological Week 10 (2 to 8 March 2020)

Highlights

- During week 10, a total of 245 new cases of cholera and 0 death were reported from 17 districts of Banadir, Jowhar district Middle Shabelle and 3 districts of Hiran regions. No case was reported from other areas
- Since December 2017, a total of 11 887 cumulative cases, including 60 deaths (CFR 0.5%), were reported from three (3) states of Somalia (Hirshabelle, Jubbaland and South West state) and Banadir region
- Since December 2017 a cumulative attack rate of 265 cases per 100 000 populations was reported, with Kismayo (Jubbaland) and Daynile (Banadir) districts being the most affected districts
- Though the overall case-fatality rate (CFR) was 0.5%, higher rates were observed in Abdilaziz, Karan and Kurtunwarey districts exceeding the WHO's threshold of <1% case fatality rate
- Of the 1 356 stool samples tested for culture since December 2017, 367 samples were tested positive for *Vibrio cholerae* serotype Ogawa
- Culture and sensitivity tests performed at the central public health laboratory in Mogadishu, show that the isolated *Vibrio cholerae*, O1, serotype Ogawa is sensitive to chloramphenicol and tetracycline but resistant to ampicillin and nalidixic acid

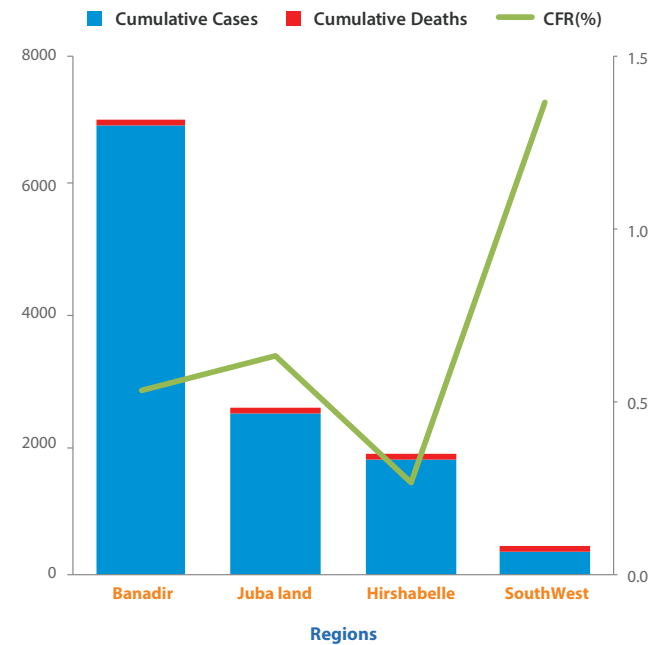


Trends of cholera cases in Somalia from January 2019 to 8 March 2020



Distribution of cholera cases from December 2017 to week 10/2020

Cholera cases, deaths and case-fatality rates by state of Somalia, December 2017 to 8 March 2020



Cholera cases, deaths and case-fatality rates by state of Somalia, December 2017 to 8 March 2020

Summary statistics

- **245** new cases of cholera and **0** deaths were reported during week 10, of which **163 (66.5%)** were children under 5 years of age
- **11 887** cumulative cases including **60** deaths were reported since December 2017 when the outbreak began, of which **7 494 (63.0%)** were children under 5 years of age and **5 742 (48.3%)** cases were females
- **2 026** cumulative cases of cholera and **10** deaths have been reported in 2020

Suspected cholera cases, attack rate, deaths and case fatality rate by district (December 2017 to 8 March 2020)

State/region	Districts	Cumulative cases	Population	Cumulative Deaths	CFR (%)	Attack Rate
Banadir	Abdul Aziz	24	47 332	1	4.3	51
	Bondere	40	109 840	0	0.0	36
	Darkenly	1066	163 855	1	0.1	651
	Danyile	1329	93 977	12	0.9	1414
	Hamar Jabjab	369	95 296	2	0.5	387
	Hamar Weyn	89	100 088	0	0.0	89
	Hawl Wadag	271	118 585	1	0.4	229
	Heliwa	58	131 341	0	0.0	44
	Hodan	1458	251 045	2	0.1	581
	Kahda	164	112 130	1	0.6	146
	Karan	113	253 106	1	0.9	45
	Madina	1406	173 573	5	0.4	810
	Shangani	21	43 775	0	0.0	48
	Shibis	22	172 842	0	0.0	13
	Waberi	235	100 540	2	0.9	234
	Wardegly	264	128 159	2	0.8	206
	Yaqshid	126	314 160	0	0.0	40
Hirshabelle	Belet Weyne	874	222 251	6	0.7	393
	Bulo Burti	154	95 403	0	0.0	161
Jubbaland	Jalalaqsi	164	73 861	1	0.9	222
	Jowhar	828	291 189	4	0.6	284
	Belet Hawa	117	108 876	0	0.0	107
South West	Kismayo	2,330	139 585	15	0.6	1669
	Badade	30	45 956	0	0.0	65
	Afgoi	153	263 633	0	0.0	58
South West	Brava	14	111 433	0	0.0	13
	Kurtunwaarey	31	211 924	4	12.9	15
	Marka	137	511 031	0	0.0	27
Total		11 887	4 484 786	60	0.5	265

* Case fatality rate >1% has been highlighted as red * Banadir is not classified as a state