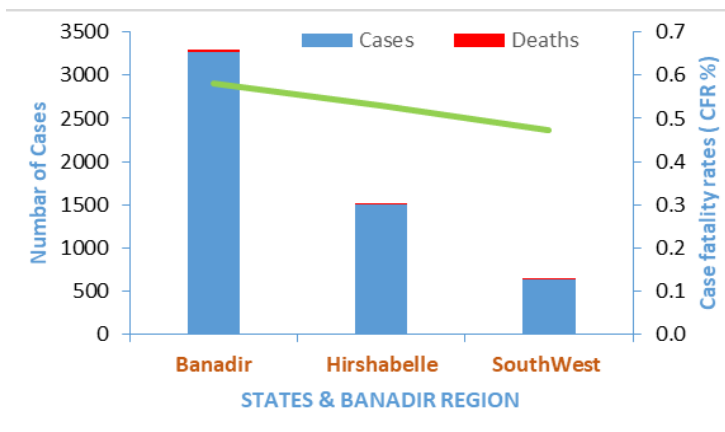


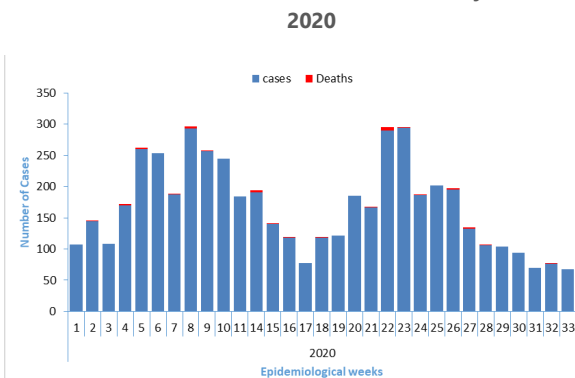
### Highlights

- During week 33 a total of 68 new cases of cholera and no death was reported from 13 districts of Banadir, and Baidoa district of Bay region. No case was reported from other areas
- Since epidemiological week1 2020, a total of 5 485 cumulative cases, including 30 deaths (CFR 0.5%), were reported from two states of Somalia (Hirshabelle and South West state) and Banadir region
- with a cumulative attack rate of 152 cases per 100 000 populations. Daynile (Banadir region) Madina and districts are the most affected districts with an attack rate of 742 and 346 cases per 100 000 populations
- Though the overall case-fatality rate (CFR) was 0.5%, higher rates were observed in Hamarweyne, Wardegley and Daynile, exceeding the WHO's threshold of <1% case fatality rate
- Of the 489 stool samples tested for culture since Epidemiological week1 2020, 165 samples were tested positive for *Vibrio cholerae* serotype Inapa.
- Culture and sensitivity tests performed at the central public health laboratory in Mogadishu, show that the isolated *Vibrio cholerae*, O1, serotype Inapa is sensitive to chloramphenicol and tetracycline but resistant to ampicillin and nalidixic acid

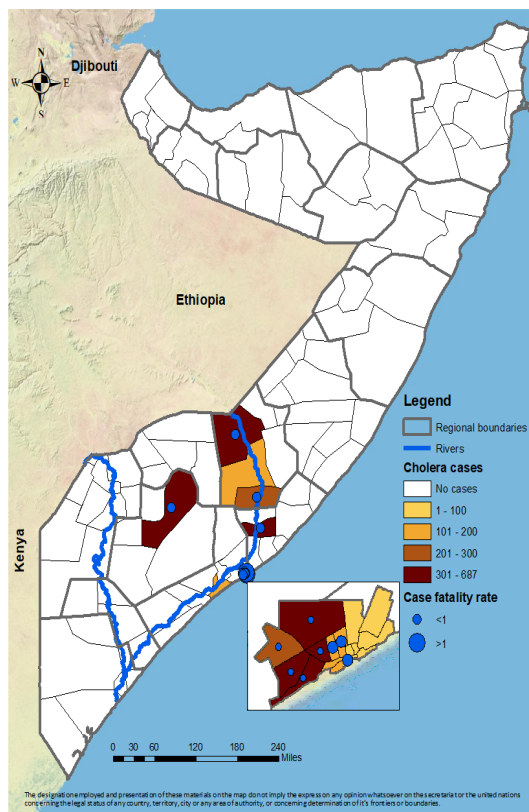
Cholera case, deaths, and Case fatality rates By state of Somalia, January to 16 August 2020



Trends of cholera cases in Somalia from January to 16 August 2020



Distribution of cholera cases from January to 16 August, 2020



### Summary of statistics

**68** new cases of cholera, and no death was reported during week 33 of which **49 (72.0%)** were children under 5 years of age

**5 485** cumulative cases including **30** deaths were reported since epidemiological week 1 to 33. Since the beginning of the year of which **3 877 (70.6%)** were children under 5 years of age and **2 659 (48.4%)** cases were females

Suspected cholera cases, attack rate, deaths and case-fatality rate by district (January to 16 August, 2020)

State/region	District	Cases	Population	Deaths	CFR (%)	Attack Rate (per 100,000 population)
Banadir	Abdul Aziz	15	47 332	0	0.0	32
	Bondere	33	109 840	0	0.0	30
	Dharkenly	511	163 855	1	0.2	312
	Daynile	697	93 977	7	1.0	742
	Hamar Jabjab	152	95 296	0	0.0	160
	Hamar Weyn	32	100 088	1	3.1	32
	Hawl Wadag	132	118 585	1	0.8	111
	Heliwa	26	131 341	0	0.0	20
	Hodan	555	251 045	1	0.2	221
	Kahda	203	112 130	1	0.5	181
	Karan	67	253 106	0	0.0	26
	Madina	600	173 573	5	0.8	346
	Shangani	8	43 775	0	0.0	18
	Shibis	12	172 842	0	0.0	7
Waberi	103	100 540	0	0.0	102	
Wardegly	104	128 159	2	1.9	81	
Yaqshid	64	314 160	0	0.0	20	
Hirshabelle state	Belet Weyne	569	222 251	5	0.9	256
	Bulo Burti	160	95 403	0	0.0	168
	Jalalaqsi	219	73 861	1	0.5	297
South west state	Jowhar	560	291 189	2	0.4	192
	Merka	109	511 031	0	0.0	21
Baidoa	Baidoa	554	360 041	3	0.5	154
	<b>Total</b>	<b>5 485</b>	<b>3 603 379</b>	<b>30</b>	<b>0.5</b>	<b>152</b>

\* Case fatality rate >1% has been highlighted as red \* Banadir is not classified as a state