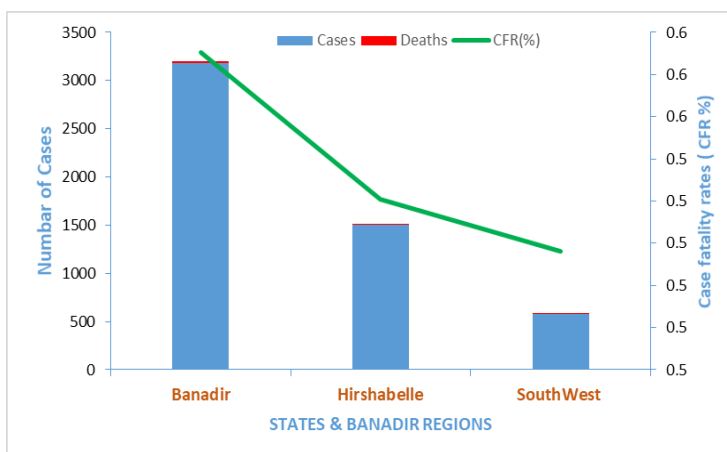


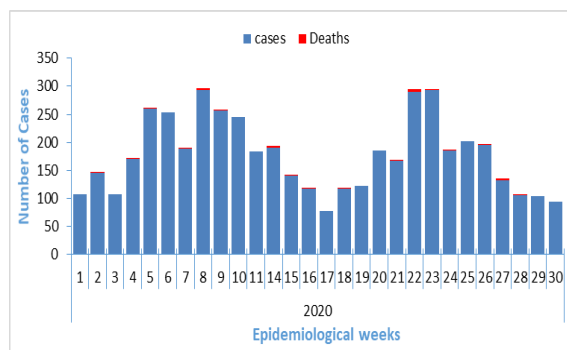
Highlights

- During week 30 a total of 94 new cases of cholera and no death was reported from 14 districts of Banadir, Merka districts, of lower Shabelle Beletweyne district of Hiran region and Baidoa district of Bay region. No case was reported from other areas
- Since epidemiological week1 2020, a total of 5 271 cumulative cases, including 29 deaths (CFR 0.6%), were reported from two states of Somalia Hirshabelle and South West state and Banadir region
- With a cumulative attack rate of 146 cases per 100 000 populations. Daynile (Banadir region) Madina and Dharkenley districts are the most affected districts with an attack rate of 717 , 334 and 303 cases per 100,000 populations
- Though the overall case-fatality rate (CFR) was 0.6%, higher rates were observed in Hamarweyne, Wardegley and Daynile, exceeding the WHO's threshold of <1% case fatality rate
- Of the 482 stool samples tested for culture since Epidemiological week1 2020, 164 samples were tested positive for *Vibrio cholerae* serotype Inapa.
- Culture and sensitivity tests performed at the central public health laboratory in Mogadishu, show that the isolated *Vibrio cholerae*, O1, serotype Inapa is sensitive to chloramphenicol and tetracycline but resistant to ampicillin and nalidixic acid

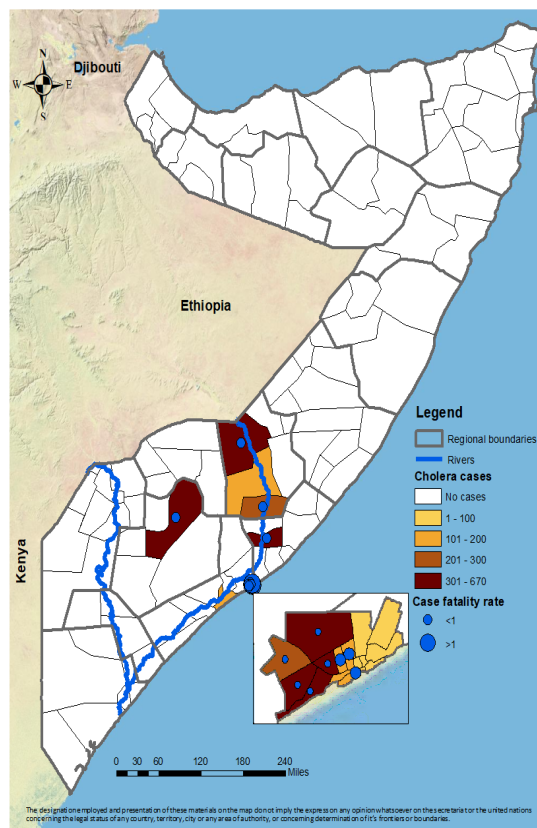
Cholera case, deaths, and Case fatality rates By state of Somalia, January to 26 July 2020



Trends of cholera cases in Somalia from January to 26 July 2020



Distribution of cholera cases from January to 26 July, 2020



Summary of statistics

94 new cases of cholera, and no death was reported during week 30, of which **60(63.8%)** were children under 5 years of age

5 271 cumulative cases including **29** deaths were reported since epidemiological week 1 to 30. Since the beginning of the year of which **3 739 (70.9%)** were children under 5 years of age and **2 560 (48.46%)** cases were females

Suspected cholera cases, attack rate, deaths and case-fatality rate by district (January to 26 July, 2020)

State/region	District	Cases	Population	Deaths	CFR (%)	Attack Rate (per 100,000 population)
Banadir	Abdul Aziz	14	47 332	0	0.0	30
	Bondere	30	109 840	0	0.0	27
	Dharkenley	496	163 855	1	0.2	303
	Daynile	670	93 977	7	1.0	713
	Hamar Jabjab	147	95 296	0	0.0	154
	Hamar Weyn	31	100 088	1	3.2	31
	Hawl Wadag	123	118 585	0	0.0	104
	Heliwa	25	131 341	0	0.0	19
	Hodan	540	251 045	1	0.2	215
	Kahda	195	112 130	1	0.5	174
	Karan	65	253 106	0	0.0	26
	Madina	580	173 573	5	0.9	334
	Shangani	8	43 775	0	0.0	18
	Shibis	10	172 842	0	0.0	6
Waberi	94	100 540	0	0.0	93	
Wardegly	96	128 159	2	2.1	75	
Yaqshid	60	314 160	0	0.0	19	
Hirshabelle state	Belet Weyne	569	222 251	5	0.9	256
	Bulo Burti	160	95 403	0	0.0	168
	Jalalaqsi	219	73 861	1	0.5	297
South west state	Jowhar	560	291 189	2	0.4	192
	Merka	109	511 031	0	0.0	21
	Baidoa	470	360 041	3	0.6	131
Total		5 271	3 603 379	29	0.6	146

* Case fatality rate >1% has been highlighted as red * Banadir is not classified as a state