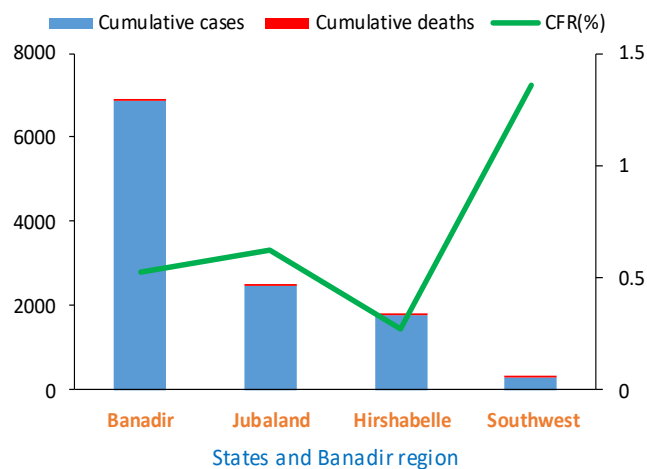


Epidemiological Week 21 (18– 24 May 2020)

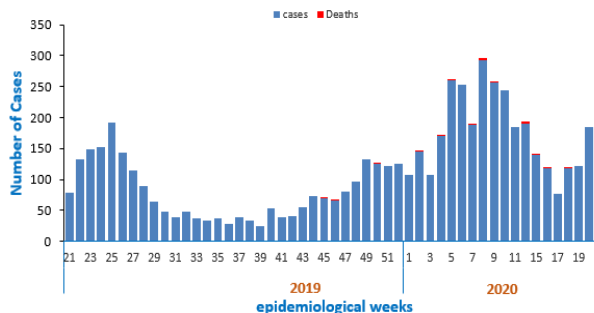
Highlights

- During week 21 a total of 167 new cases of cholera and 1 death were reported from 14 districts of Banadir, Beletweyne district of Hiran region. No case was reported from other areas
- Since December 2017, a total of 13 528 cumulative cases, including 67 deaths (CFR 0.5%), were reported from three (3) states of Somalia (Hirshabelle, Jubbaland and South West state) and Banadir region
- With a cumulative attack rate of 303 cases per 100 000 populations., Kismayo (Jubbaland) and Daynile (Banadir) districts are the most affected districts with an attack rate of 1 669 and 1 587 cases per 100,000 population.
- Though the overall case-fatality rate (CFR) was 0.5%, higher rates were observed in Abdilaziz, and Kurtunwarey districts exceeding the WHO's threshold of <1% case fatality rate
- Of the 1 413 stool samples tested for culture since December 2017, 380 samples were tested positive for *Vibrio cholerae* serotype Ogawa
- Culture and sensitivity tests performed at the central public health laboratory in Mogadishu, show that the isolated *Vibrio cholerae*, O1, serotype Ogawa is sensitive to chloramphenicol and tetracycline but resistant to ampicillin and nalidixic acid

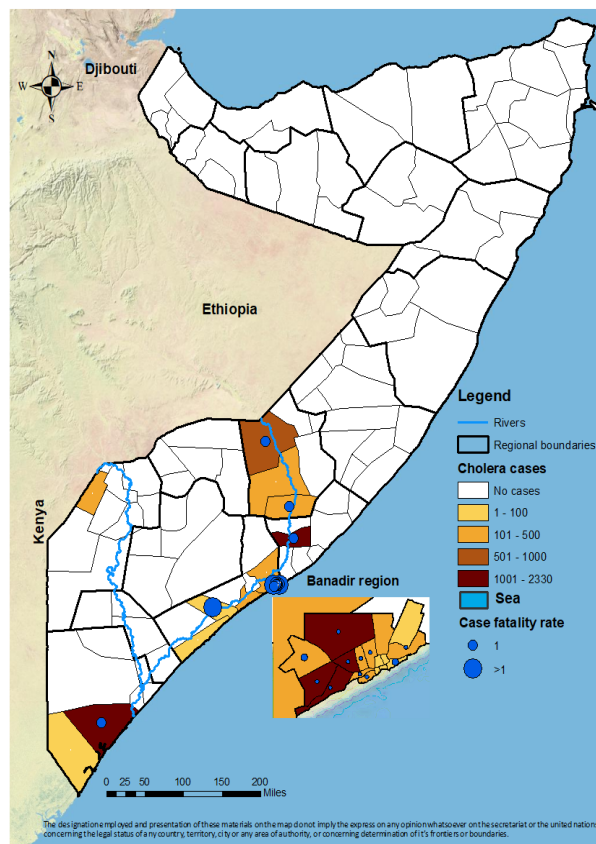
Cholera cases ,deaths and Case fatality rates by state of Somalia, December 2017 to 24 May, 2020



Trends of cholera cases in Somalia from 24 May, 2019 to 24 May, 2020



Distribution of cholera cases from December 2017 to 24 May, 2020



Summary of statistics

167 new cases of cholera and **1** death was reported during week **21**, of which **125 (74.85%)** were children under **5** years of age

13 528 cumulative cases including **67** deaths were reported since December 2017 when the outbreak began, of which **8 617 (63.69%)** were children under **5** years of age and **6 557(48.46%)** cases were females

3 667 cumulative cases of cholera and seventeen (**17**) deaths have been reported in 2020

Suspected cholera cases, attack rate, deaths and case-fatality rate by district (December 2017 to 24 May, 2020)

State/region	District	Cases	Population	Deaths	CFR (%)	Attack Rate
Banadir. ^b	Abdul Aziz	31	47 332	1	3.2	65
	Bondere	52	109 840	0	0.0	47
	Dharkenly	1 244	163 855	2	0.2	759
	Danyile	1 547	93 977	13	0.8	1 646
	Hamar Jabjab	445	95 296	2	0.4	467
	Hamar Weyn	96	100 088	0	0.0	96
	Hawal Wadag	307	118 585	1	0.3	259
	Helliwa	69	131 341	0	0.0	53
	Hodan	1 646	251 045	3	0.2	656
	Kahda	228	112 130	2	0.9	203
	Karan	139	253 106	1	0.7	55
	Madina	1 608	173 573	8	0.5	926
	Shangani	23	43 775	0	0.0	53
	Shibis	28	172 842	0	0.0	16
Hirshabelle	Waberi	279	100 540	2	0.7	278
	Wardegly	295	128 159	2	0.7	230
	Yaqshid	153	314 160	0	0.0	49
	Belet Weyne	983	222 251	6	0.6	442
	Bulo Burti	196	95 403	0	0.0	205
Jubbaland	Jalalaqsi	226	73 861	1	0.4	306
	Jowhar	1 118	291 189	4	0.4	384
	Belet Hawa	120	108 876	0	0.0	110
South West	Kismayo	2 330	139 585	15	0.6	1669
	Badade	30	45 956	0	0.0	65
	Afgoi	153	263 633	0	0.0	58
South West	Brava	14	111 433	0	0.0	13
	Kurtunwarey	31	211 924	4	12.9	15
	Marka	137	511,031	0	0.0	27
Total		13 528	4 484 786	67	0.5	302

^a Case fatality rate >1% has been highlighted as red ^b Banadir is not classified as a state