

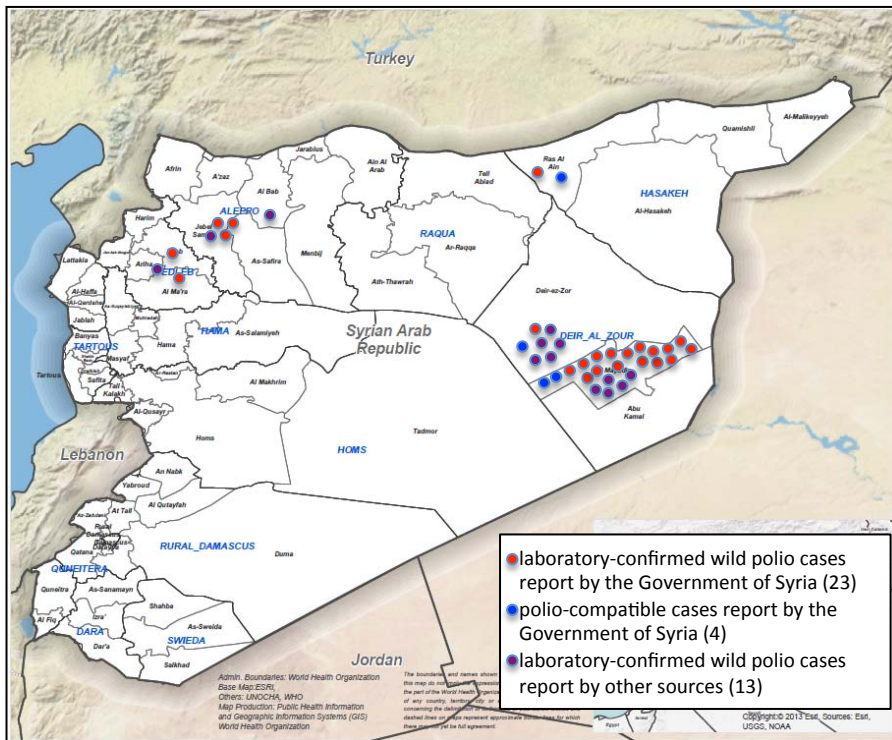
Situation Update

As of 10 February 2014:

The total number of laboratory confirmed wild poliovirus type 1 cases (WPV1) reported by the government of the Syrian Arab Republic remains at 23. The February-2014 immunization round throughout Syria is wrapping up. Details of the campaign will be made available shortly. The updated supplementary immunization activities calendar for the region is available at the end of this bulletin.

In order to assess the geographic extent and risk of continued circulation of wild poliovirus, there has been a concerted effort to reconcile, verify and report laboratory-confirmed polio cases from all sources. Also given the challenge of obtaining adequate laboratory specimens in conflict settings, polio-compatible cases are helping to guide national and international outbreak response planning.

Syrian Arab Republic: Wild poliovirus and Compatible cases



Note that cases are plotted within the boundaries of districts.

New cases – Summary:

New cases this week:

None

Location / Date of onset:

None

Outbreak – Summary:

Total number of cases-2013:

23 (in Syria)

Most recent case:

Edleb, Mara /
17-Dec-13

Index case:

Aleppo, Fardous /
14-Jul-13

Duration of outbreak:

24 weeks

Extent of outbreak:

4 governorates / 8 districts (in Syria)

SIA – Summary:

Number of SIAs since Index case:

4 (4 NIDs)

Number of SIAs since last case*:

2 (2 NIDs)

*Includes SIAs within 10 days prior to onset.

Summary information

as of 3 February 2014

AFP case information: 2013

Age	Syria						Egypt		Iraq		Jordan		Lebanon		West Bank and Gaza Strip		Turkey	
	WPV cases		Compatible cases		NP AFP cases		NP AFP cases		NP AFP cases		NP AFP cases		NP AFP cases		NP AFP cases		NP AFP cases	
	Nb	%	Nb	%	Nb	%	Nb	%	Nb	%	Nb	%	Nb	%	Nb	%	Nb	%
0-5 months	2	9%	0	0%	3	2%	27	3%	19	4%	3	9%	1	3%	0	0%	5	2%
6-23 months	16	70%	4	100%	35	26%	377	37%	116	26%	5	14%	4	12%	11	29%	32	14%
24-59 months	3	13%	0	0%	40	30%	351	35%	177	40%	16	46%	16	48%	12	32%	70	30%
60-119 months	2	9%	0	0%	37	27%	190	19%	96	22%	6	17%	8	24%	6	16%	63	27%
120-179 months	0	0%	0	0%	16	12%	62	6%	36	8%	4	11%	4	12%	9	24%	61	26%
180+ months	0	0%	0	0%	4	3%	0	0%	0	0%	1	3%	0	0%	0	0%	3	1%
TOTAL	23		4		135		1007		444		35		33		38		234	
Vaccination status																		
0 Dose	9	53%	3	75%	11	8%	0	0%	5	1%	1	3%	2	6%	0	0%	19	8%
1-2 Doses	6	35%	0	0%	15	11%	17	2%	25	6%	0	0%	2	6%	0	0%	73	31%
3 Doses	1	6%	0	0%	9	7%	13	1%	42	9%	1	3%	5	15%	0	0%	11	5%
4+ Doses	1	6%	0	0%	94	70%	970	96%	347	78%	24	69%	19	58%	37	97%	131	56%
Unknown	0	0%	1	25%	6	4%	7	1%	25	6%	9	26%	5	15%	1	3%	0	0%
TOTAL	17		4		135		1007		444		35		33		38		234	
Gender																		
M	10	59%	2	50%	71	53%	578	57%	261	59%	22	63%	28	85%	15	39%	139	59%
F	7	41%	2	50%	64	47%	429	43%	183	41%	13	37%	5	15%	23	61%	95	41%
TOTAL	17		4		135		1007		444		35		33		38		234	

NB includes IPV for Turkey

AFP case information: 2014

Age	Syria						Egypt		Iraq		Jordan		Lebanon		West Bank and Gaza Strip		Turkey	
	WPV cases		Compatible cases		NP AFP cases		NP AFP cases		NP AFP cases		NP AFP cases		NP AFP cases		NP AFP cases		NP AFP cases	
	Nb	%	Nb	%	Nb	%	Nb	%	Nb	%	Nb	%	Nb	%	Nb	%	Nb	%
0-5 months	0	0%	0	0%	1	13%	5	6%	1	5%	0	0%	0	0%	0	0%	1	7%
6-23 months	0	0%	0	0%	2	25%	34	38%	2	9%	0	0%	0	0%	0	0%	0	0%
24-59 months	0	0%	0	0%	2	25%	30	33%	7	32%	2	50%	0	0%	0	0%	6	40%
60-119 months	0	0%	0	0%	1	13%	19	21%	9	41%	1	25%	0	0%	0	0%	3	20%
120-179 months	0	0%	0	0%	2	25%	1	1%	3	14%	1	25%	2	100%	2	100%	5	33%
180+ months	0	0%	0	0%	0	0%	1	1%	0	0%	0	0%	0	0%	0	0%	0	0%
TOTAL	0		0		8		90		22		4		2		2		15	
Vaccination status																		
0 Dose	0	0%	0	0%	0	0%	0	0%	1	5%	0	0%	0	0%	0	0%	0	0%
1-2 Doses	0	0%	0	0%	2	25%	3	3%	2	9%	0	0%	0	0%	0	0%	7	47%
3 Doses	0	0%	0	0%	1	13%	2	2%	2	9%	0	0%	0	0%	0	0%	0	0%
4+ Doses	0	0%	0	0%	4	50%	73	81%	15	68%	0	0%	2	100%	2	100%	8	53%
Unknown	0	0%	0	0%	1	13%	12	13%	2	9%	4	100%	0	0%	0	0%	0	0%
TOTAL	0		0		8		90		22		4		2		2		15	
Gender																		
M	0	0%	0	0%	6	75%	48	53%	10	45%	2	50%	1	50%	1	50%	7	47%
F	0	0%	0	0%	2	25%	42	47%	12	55%	2	50%	1	50%	1	50%	8	53%
TOTAL	0		0		8		90		22		4		2		2		15	

NB includes IPV for Turkey

Country / Territory	Year	AFP cases reported	Non-polio AFP rate	AFP cases with adequate specimens (%)
Egypt	2010	1151	4.5	95
	2011	1023	4.0	93
	2012	1022	3.9	92
	2013	1007	3.0	92
	2014	90	3.0	64
Iraq	2010	489	4.0	87
	2011	530	4.3	89
	2012	467	3.8	90
	2013	444	3.1	84
	2014	22	1.7	100
Jordan	2010	40	1.8	95
	2011	30	1.4	97
	2012	34	1.5	85
	2013	35	1.4	88
	2014	4	1.8	75
Lebanon	2010	19	1.7	47
	2011	22	2.0	45
	2012	24	2.2	50
	2013	33	3.3	45
	2014	2	2.2	100
Syrian Arab Republic	2010	194	2.6	95
	2011	168	2.3	93
	2012	109	1.4	84
	2013	162	1.6	73
	2014	8	1.1	100
Turkey	2010	215	1.1	74
	2011	196	1.0	81
	2012	172	0.9	81
	2013	234	1.0	75
	2014	15	0.7	100
West Bank and Gaza Strip	2010	15	0.9	100
	2011	17	1.1	100
	2012	21	1.3	95
	2013	38	2.2	95
	2014	2	1.3	100

Surveillance indicators, 2010-2014

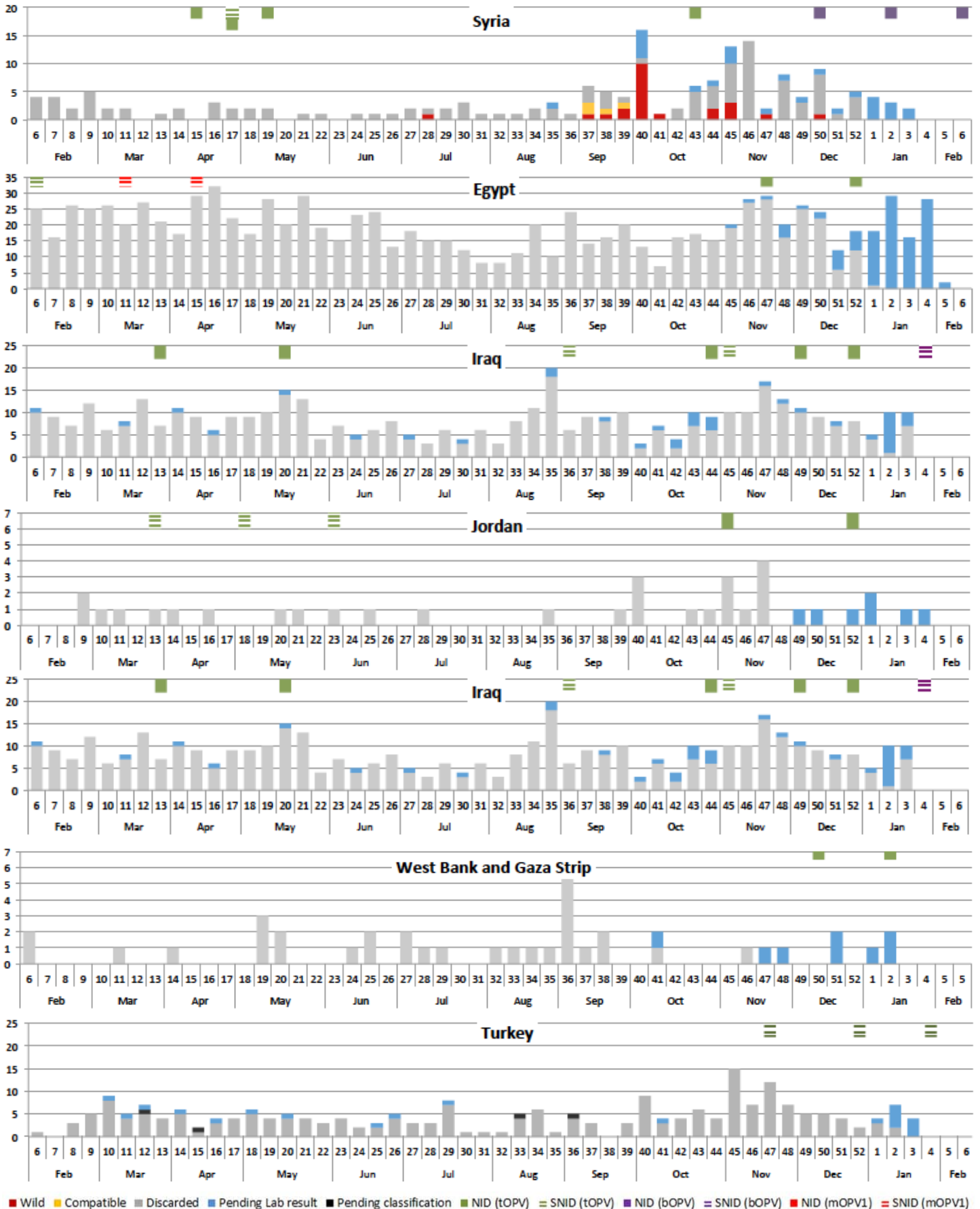
Targets:

NP AFP rate: $\geq 2/100,000$ pop < 15 years of age

Stool adequacy: $\geq 80\%$ stool samples

Epidemiological curves

as of 3 February 2014



■ Wild ■ Compatible ■ Discarded ■ Pending Lab result ■ Pending classification ■ NID (tOPV) ■ SNID (tOPV) ■ NID (bOPV) ■ SNID (bOPV) ■ NID (mOPV1) ■ SNID (mOPV1)

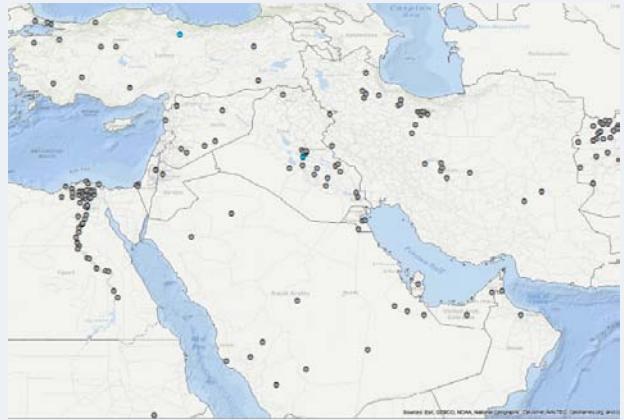
AFP cases by classification, previous 8 months

as of 3 February 2014

June 2013



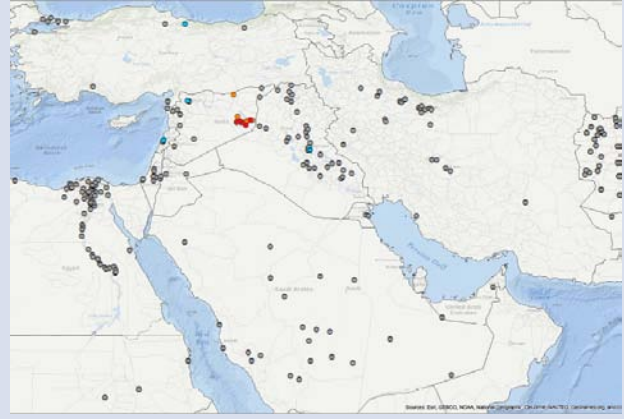
July 2013



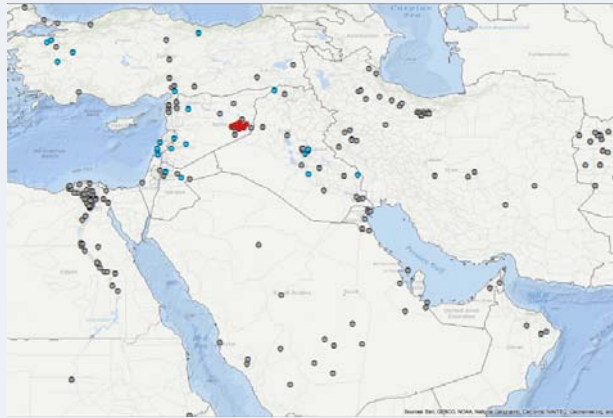
August 2013



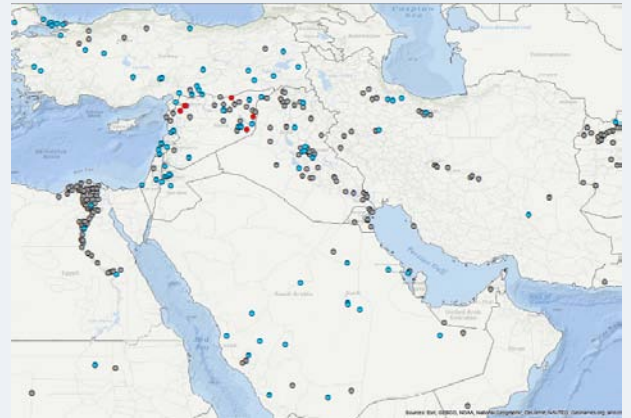
September 2013



October 2013



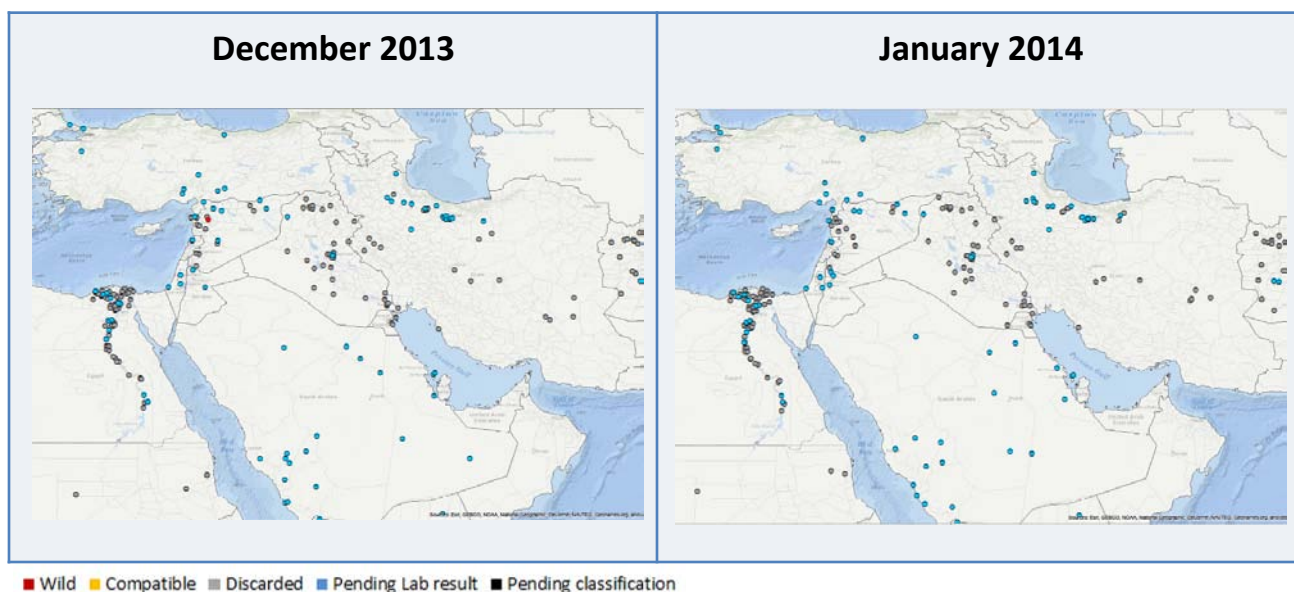
November 2013



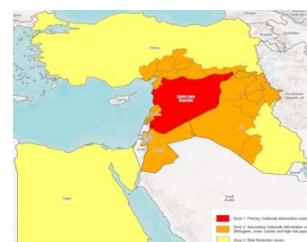
■ Wild ■ Compatible ■ Discarded ■ Pending Lab result ■ Pending classification

AFP cases by classification, previous 8 months

as of 3 February 2014



Classification of AFP cases by intervention zone, 2013-2014 as of 3 February 2014



Classification of AFP cases by intervention zone, 2013 cases (as of week 06-2014)

Zones	Country	AFP case classification					Total AFP cases	Annualized (week 52)	
		Wild	Compatible	Discarded	Pending final classification	Pending lab result		NP AFP rate	NP AFP cases (expected nb)
1	SYR	23	4	117		18	162	1.6	195
2	JOR			32		3	35	1.4	48
	LEB			8		25	33	3.3	22
2 3	IRQ			419		25	444	3.1	288
	TUR			217	5	12	234	1.1	430
3	WBG			33		5	38	2.2	34
	EGY			990		17	1007	4.0	645
Total		23	4	1816	5	105	1953	2.3	1662

Classification of AFP cases by intervention zone, 2014 cases (as of week 06-2014)

Zones	Country	AFP case classification					Total AFP cases	Annualized (week 6)	
		Wild	Compatible	Discarded	Pending final classification	Pending lab result		NP AFP rate	NP AFP cases (expected nb)
1	SYR			1		7	8	1.1	18
2	JOR			0		4	4	1.8	5
	LEB			0		2	2	2.2	2
2 3	IRQ			9		13	22	1.7	27
	TUR			5		10	15	0.7	41
3	WBG			0		2	2	1.3	3
	EGY			3		87	90	3.0	62
Total		0	0	18	0	125	143	1.5	158

