



SITUATION REPORT

COVID-19 PAKISTAN

Monday, 27 July 2020 (Day – 152)

Daily Updates (Last 24hrs)

17,368

Suspected Cases

22,056

Tests Conducted

1,176

Confirmed Cases

3,592

Recovered Cases

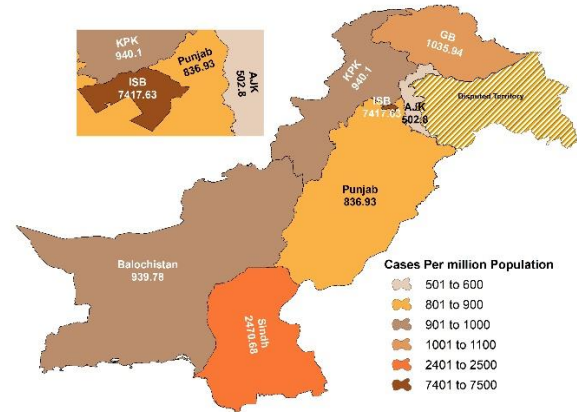
1,229

Currently Critical

20

Deaths

COVID-19 case density/million Population

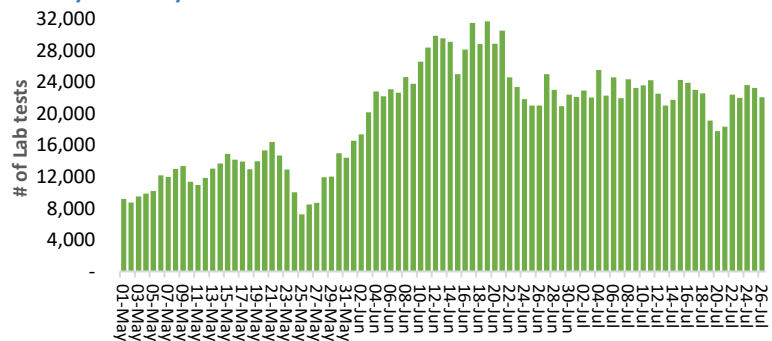


Executive Summary

Pakistan reported **1,176** new cases of COVID-19 on **26 July 2020**. The total number of cases notified since the beginning of the outbreak is **274,289** with **5,842** deaths (**CFR: 2.12%**). Out of the total **27,421** currently active cases, **1,864** cases are hospitalized, out of which **1,229** (**65.93%**) are in critical condition. **25,557** COVID-19 positive cases are at designated isolation facilities or in-home isolation. A total of **241,026** (**87.87%**) have recovered and discharged.

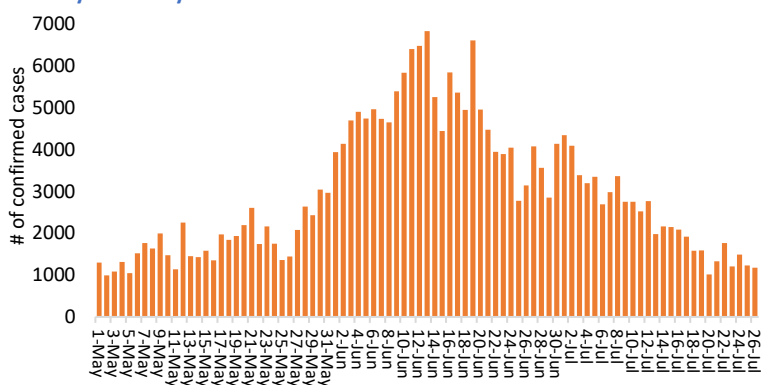
Daily Lab tests conducted in Pakistan

01 May to 26 July 2020



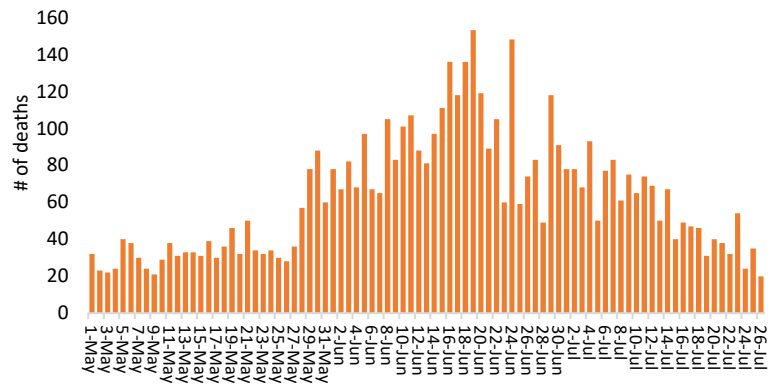
Daily incidence of COVID-19 cases in Pakistan

01 May to 26 July 2020



Daily Mortality in Pakistan

01 May to 26 July 2020



Funds

Funds Requested: 21.5 Million USD

Gaps: 14.98 Million USD

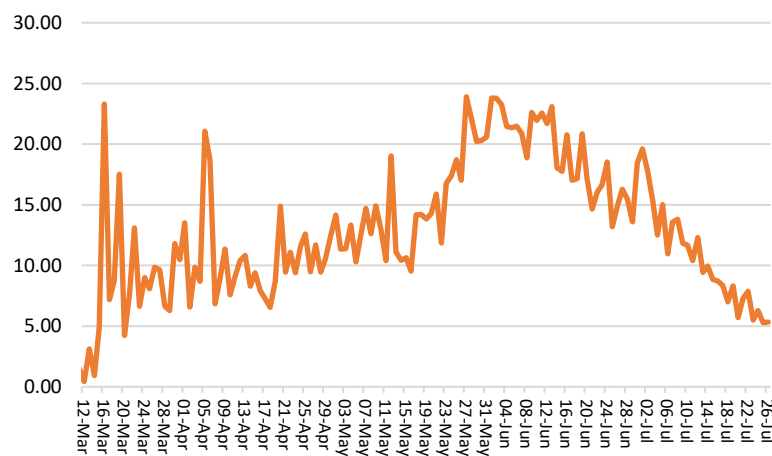
WHO appreciates the contribution of donors (DFID, BMGF, DFATD Canada, JICA, UNOCHA, South Korea, Czech Republic and Germany) to support Government of Pakistan towards COVID-19 through WHO Pakistan.



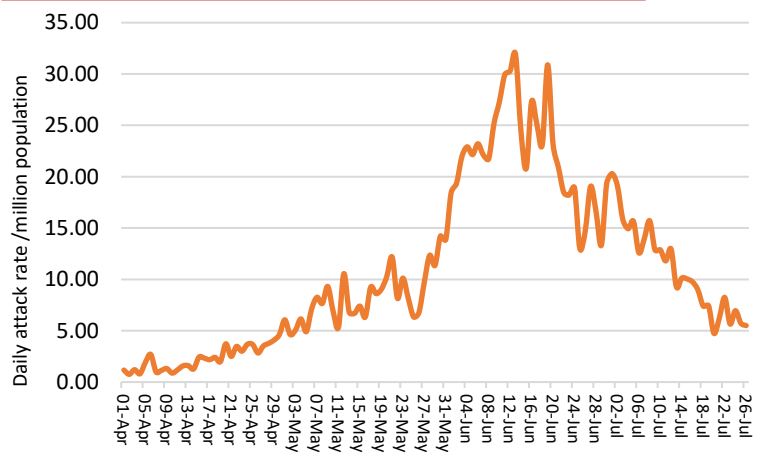
Meeting & Coordination

Today, 27th July 2020, The WHO Country Representative, Pakistan Dr Palitha Mahipala launched the 1st WHO Pakistan newsletter in context of COVID-19 response in the country. The launch was attended by WHO staff both virtually and in person. During the launch the WR appreciated the effort of WHO staff in supporting the government of Pakistan to respond to the outbreak. He commends the Government of Pakistan for the robust strategies implemented across all tiers. As a result, the country is now seeing a steady decline in the daily incidence and positivity rate. Pakistan is one of the few countries reporting decrease in the daily incidence.

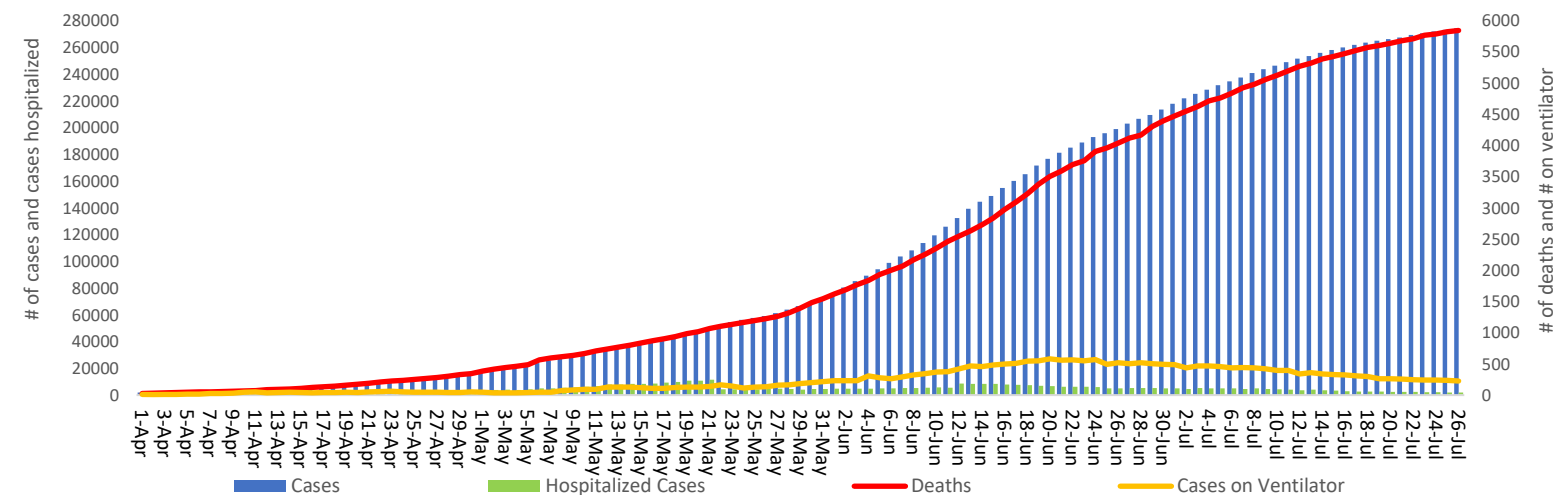
Daily Positivity rate in Pakistan



Daily Attack rate/million population



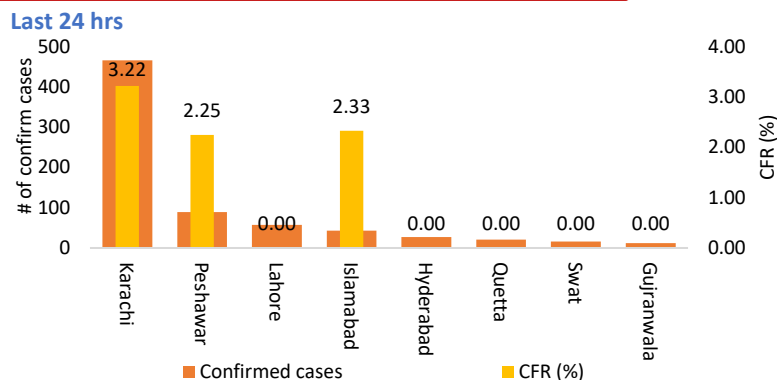
Trends of COVID-19 cases, hospitalized, on ventilator & Deaths



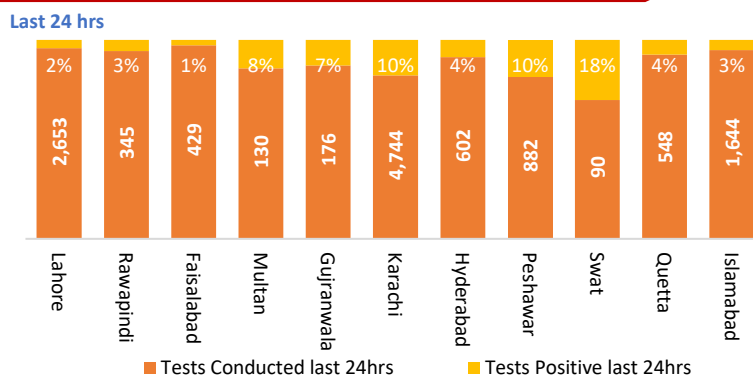
Summary table (Cumulative) as of 27th July 2020

| Lab Status | | Hospitalized | | | Home or elsewhere Isolation | Recovered | Deaths |
|------------|----------|--------------|-----------|----------|-----------------------------|-----------|--------|
| Tested | Positive | Stable | On oxygen | On Vent. | | | |
| 1,890,236 | 274,289 | 635 | 1,002 | 227 | 25,557 | 241,026 | 5,842 |

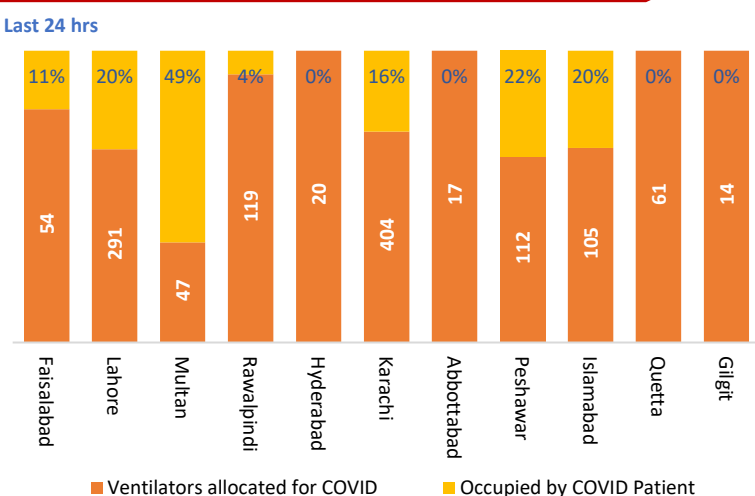
COVID-19 confirmed cases & CFR (%) by districts



COVID-19 Positivity rates in major cities/districts



Occupied COVID ventilators in major cities/districts



Summary table for major cities/districts

| Districts | Hospitalized | | | | Home or elsewhere Isolation |
|------------|--------------|--------------------|---------------------|----------|-----------------------------|
| | Stable | On low flow oxygen | On High flow oxygen | On Vent. | |
| Lahore | 76 | 46 | 108 | 59 | 2,425 |
| Rawalpindi | 33 | 22 | 10 | 05 | 380 |
| Faisalabad | 19 | 05 | 30 | 06 | 322 |
| Multan | 11 | 05 | 05 | 23 | 402 |
| Gujranwala | 85 | 00 | 27 | 01 | 180 |
| Karachi | 63 | 85 | 238 | 65 | 4,029 |
| Hyderabad | 17 | 11 | 09 | 00 | 333 |
| Peshawar | 07 | 13 | 82 | 25 | 2,318 |
| Swat | 07 | 00 | 10 | 01 | 238 |
| Quetta | 00 | 01 | 16 | 00 | 676 |
| Islamabad | 15 | 35 | 06 | 21 | 2,390 |

Summary table by province as of 27th July 2020 (09:00 AM)

| Provinces | Lab Status | | Hospitalized | | | | Home or elsewhere Isolation | Recovered | Deaths |
|--------------|------------|----------|--------------|--------------------|---------------------|----------|-----------------------------|-----------|--------|
| | Tested | Positive | Stable | On low flow Oxygen | On High flow Oxygen | On Vent. | | | |
| AJK | 24,892 | 2,034 | 32 | 13 | 04 | 00 | 487 | 1,449 | 49 |
| Balochistan | 57,535 | 11,601 | 00 | 01 | 16 | 00 | 1,472 | 9,976 | 136 |
| G. Baltistan | 15,418 | 1,989 | 59 | 30 | 01 | 00 | 285 | 1,566 | 48 |
| Islamabad | 180,065 | 14,884 | 15 | 35 | 06 | 21 | 2,390 | 12,253 | 164 |
| KP | 202,884 | 33,397 | 14 | 56 | 110 | 31 | 4,889 | 27,119 | 1,178 |
| Punjab | 699,636 | 92,073 | 434 | 180 | 200 | 110 | 7,773 | 81,260 | 2,116 |
| Sindh | 709,806 | 118,311 | 81 | 97 | 253 | 65 | 8,261 | 107,403 | 2,151 |

Source: Ministry of national health Services, regulations and coordination, National emergency operation center

Contact Details

Dr Palitha Mahipala
WHO Representative
WHO Country Office
Islamabad – Pakistan
Tel: +92 51 9255183
ail: mahipalap@who.int

Dr Michael Lukwiya
Incident Manager
WHO Country Office
Islamabad - Pakistan
Tel: +92 51 9255184
Email: lukwiyam@who.int