



**World Health
Organization**

Weekly AFP Surveillance Update Pakistan

Week 47 (*Ended on 22nd November, 2014*)

AFP Surveillance



National Surveillance Cell Federal EPI

World Health Organization Country Office,
Chak Shahzad, Park Road,
Islamabad, Pakistan

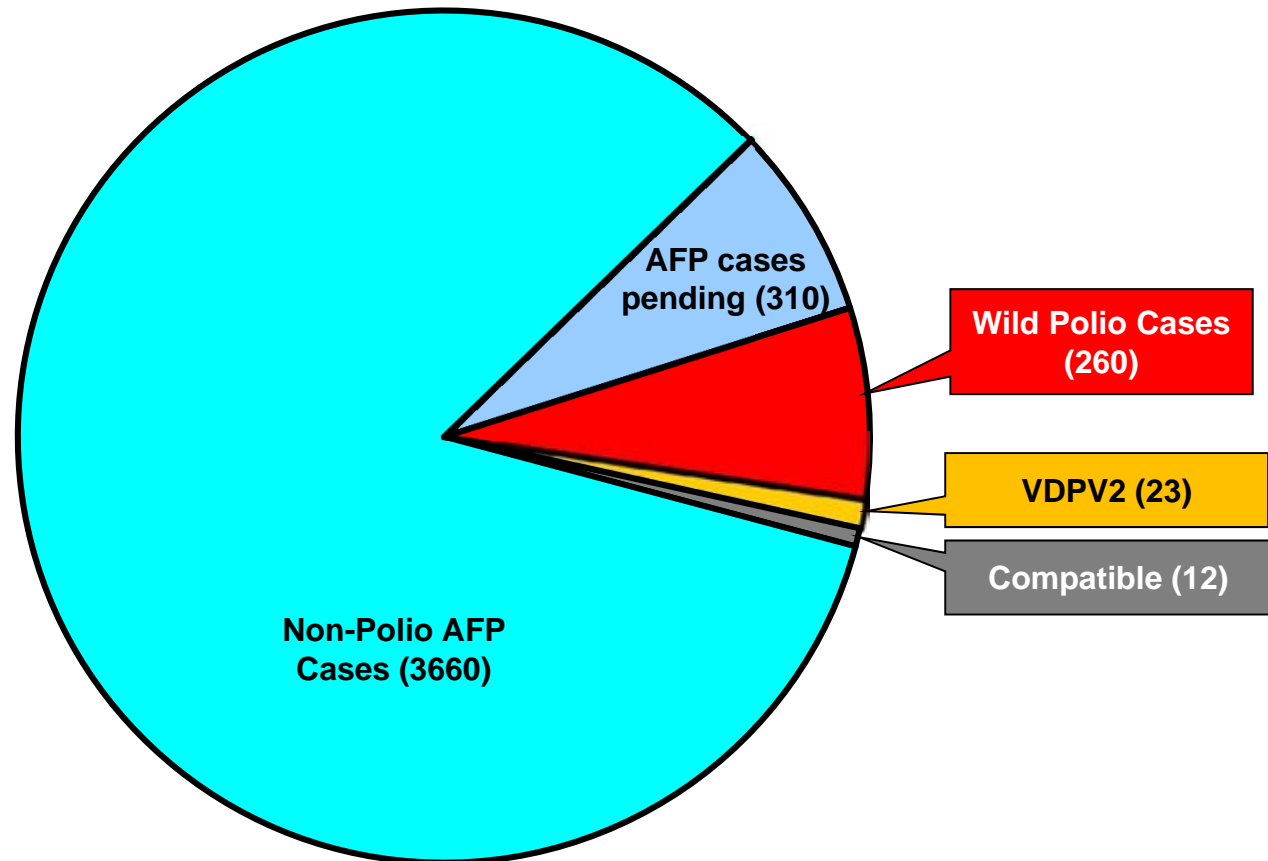
Tel: +92-51 9255123 / 9255282 /9255184

Fax: +92-51 9255274

Email: epidata@pak.emro.who.int

Web site: www.who.gov.pk

AFP Case Profile, 2014*



Total AFP Cases Reported = 4265

**^81 Inadequate cases pending classification by ERC
^130 Inadequate cases not due for FUP
^99 Pending in the Lab**

* Afp.rec Data as of 20-11-2014

Point in Time Comparison of polio cases by province/region 2013 & 2014*

Region/ Province	No. of polio cases		No. of infected districts/towns		Last polio case
	2013	2014	2013	2014	
Balochistan	0	14	0	4	11-Nov-14
FATA / FR Areas	51	163	4	4	10-Nov -14
Khyber Pakhtunkhwa	10	54	6	10	03-Nov -14
Sindh	7	26	5	12	26-Oct-14
Punjab	6	3	5	3	18-Sep-14
Pakistan	74	260	20	33	11-Nov-14

Seven additional districts / town declared infected based on environmental samples in 2014

* Afp.rec Data as of 20-11-2014

Table 1: List of Confirmed Polio Cases, Pakistan 2014* (1/11)

S.NO.	PROVINCE/ REGION	DISTRICT	TEHSIL	EPID NO.	SEX	AGE (m)	DATE ONSET OF PARALYSIS	NO. OPV DOSES (based on parents recall)		FEVER	Asymmetrical Paralysis	Rapid Progression	REFUSAL	WPV TYPE	GENETICS
								Routine	SIA's						Cluster
1	FATA	WAZIR-N	MIR ALI	FT/64/14/006	F	19	3-Jan-14	0	0	Y	Y	Y	N	NSL1	R4B5
2	FATA	WAZIR-N	MIR ALI	FT/64/14/003	M	14	3-Jan-14	0	0	Y	Y	Y	N	NSL1	R4B5
3	FATA	WAZIR-N	MIR ALI	FT/64/14/007	F	8	4-Jan-14	0	0	Y	Y	Y	N	NSL1	R4B5
4	FATA	WAZIR-N	MIR ALI	FT/64/14/004	F	13	4-Jan-14	0	0	Y	Y	Y	N	NSL1	R4B5
5	FATA	WAZIR-N	MIRAN SHAH	FT/64/14/005	F	17	5-Jan-14	0	0	Y	Y	Y	N	NSL1	R4B5
6	FATA	WAZIR-N	MIRAN SHAH	FT/64/14/011	F	12	10-Jan-14	0	0	Y	Y	Y	N	NSL1	R4B4
7	FATA	WAZIR-N	MIRAN SHAH	FT/64/14/018	M	12	11-Jan-14	0	0	Y	Y	Y	N	NSL1	R4B4
8	FATA	KHYBER	BARA	FT/34/14/003	F	13	12-Jan-14	0	0	Y	Y	Y	N	NSL1	R4B5
9	FATA	WAZIR-N	MIR ALI	FT/64/14/012	M	23	16-Jan-14	0	0	Y	Y	Y	N	NSL1	R4B5
10	FATA	WAZIR-N	MIRAN SHAH	FT/64/14/016	M	10	17-Jan-14	0	0	Y	Y	Y	N	NSL1	R4B4
11	FATA	WAZIR-N	MIRAN SHAH	FT/64/14/017	M	17	22-Jan-14	0	0	Y	Y	Y	N	NSL1	R4B5
12	FATA	WAZIR-N	MIRAN SHAH	FT/64/14/019	F	18	24-Jan-14	0	0	Y	Y	Y	N	NSL1	R4B5
13	FATA	WAZIR-N	MIRAN SHAH	FT/64/14/021	M	16	25-Jan-14	0	0	Y	Y	Y	N	NSL1	R4B5
14	KPAKHTUNKHWA	BANNU	BANNU	KP/61/14/001	M	39	26-Jan-14	0	4	Y	N	Y	Y	NSL1	R4B5
15	FATA	WAZIR-N	MIR ALI	FT/64/14/024	M	18	28-Jan-14	0	0	Y	Y	Y	N	NSL1	R4B5
16	FATA	WAZIR-N	MIRAN SHAH	FT/64/14/022	F	11	29-Jan-14	0	0	Y	Y	Y	N	NSL1	R4B4
17	KPAKHTUNKHWA	PESHAWAR	PESHAWAR	KP/30/14/008	M	6	31-Jan-14	3	3	Y	Y	Y	Y	NSL1	R4B6
18	FATA	WAZIR-N	MIRAN SHAH	FT/64/14/028	M	18	5-Feb-14	0	0	Y	Y	Y	N	NSL1	R4B5
19	FATA	WAZIR-N	MIRAN SHAH	FT/64/14/027	M	12	7-Feb-14	0	0	Y	Y	Y	N	NSL1	R4B5
20	FATA	WAZIR-N	MIRAN SHAH	FT/64/14/032	M	18	8-Feb-14	0	0	Y	Y	Y	N	NSL1	R4B4
21	FATA	WAZIR-N	MIRAN SHAH	FT/64/14/034	F	18	9-Feb-14	0	0	Y	Y	Y	N	NSL1	R4B4
22	FATA	WAZIR-N	MIR ALI	FT/64/14/041	F	18	10-Feb-14	0	0	Y	N	N	N	NSL1	R4B5
23	KPAKHTUNKHWA	PESHAWAR	PESHAWAR	KP/30/14/012	M	18	10-Feb-14	1	7+	Y	Y	Y	N	NSL1	R4B5
24	SINDH	KHIBALDIA	BALDIA	SD/61/14/002	F	24	10-Feb-14	0	0	Y	Y	Y	N	NSL1	R4B2

Table 1: List of Confirmed Polio Cases, Pakistan 2014* (2/11)

S.NO.	PROVINCE/ REGION	DISTRICT	TEHSIL	EPID NO.	SEX	AGE (m)	DATE ONSET OF PARALYSIS	NO. OPV DOSES (based on parents recall)		FEVER	Asymetric Paralysis	Rapid Progression	REFUSAL	WPV TYPE	GENETICS
								Routine	SIA's						Cluster
25	FATA	WAZIR-S	BIRMAL	FT/65/14/001	F	6	12-Feb-14	0	0	Y	Y	Y	N	NSL1	R4B4
26	FATA	WAZIR-N	MIRAN SHAH	FT/64/14/035	M	5	12-Feb-14	0	0	Y	Y	Y	N	NSL1	R4B2
27	FATA	FR BANNU	FR BANNU	FT/69/14/009	F	18	14-Feb-14	0	0	Y	Y	Y	N	NSL1	R4B5
28	FATA	WAZIR-N	MIR ALI	FT/64/14/038	M	44	15-Feb-14	0	0	Y	Y	Y	N	NSL1	R4B5
29	FATA	WAZIR-N	MIRAN SHAH	FT/64/14/037	M	10	16-Feb-14	0	0	Y	Y	Y	N	NSL1	R4B4
30	FATA	WAZIR-N	MIR ALI	FT/64/14/042	M	17	21-Feb-14	0	0	Y	Y	N	N	NSL1	R4B5
31	FATA	WAZIR-N	MIRAN SHAH	FT/64/14/047	F	7	21-Feb-14	0	0	Y	Y	Y	N	NSL1	R4B5
32	FATA	WAZIR-N	MIRAN SHAH	FT/64/14/040	M	11	22-Feb-14	0	0	Y	Y	Y	N	NSL1	R4B5
33	KPAKHTUNKHWA	PESHAWAR	PESHAWAR	KP/30/14/016	M	22	24-Feb-14	3	7	Y	N	Y	N	NSL1	R4B6
34	FATA	WAZIR-N	MIR ALI	FT/64/14/043	M	16	25-Feb-14	0	0	Y	Y	Y	N	NSL1	R4B5
35	FATA	WAZIR-N	MIRAN SHAH	FT/64/14/046	M	84	26-Feb-14	0	0	Y	Y	Y	N	NSL1	R4B3
36	KPAKHTUNKHWA	BANNU	BANNU	KP/61/14/007	F	10	2-Mar-14	0	0	Y	Y	Y	Y	NSL1	R4B5
37	KPAKHTUNKHWA	BANNU	BANNU	KP/61/14/009	F	10	3-Mar-14	0	2	Y	N	Y	Y	NSL1	R4B5
38	FATA	WAZIR-N	MIRAN SHAH	FT/64/14/050	M	13	4-Mar-14	0	0	Y	Y	Y	N	NSL1	R4B4
39	FATA	WAZIR-N	RAZMAK	FT/64/14/051	M	14	7-Mar-14	0	0	Y	Y	Y	N	NSL1	R4B4
40	KPAKHTUNKHWA	BANNU	BANNU	KP/61/14/006	F	18	7-Mar-14	0	2	Y	Y	Y	Y	NSL1	R4B5
41	FATA	WAZIR-N	MIR ALI	FT/64/14/049	M	5	8-Mar-14	0	0	Y	N	Y	N	NSL1	R4B5
42	FATA	WAZIR-N	MIRAN SHAH	FT/64/14/056	M	12	14-Mar-14	0	0	Y	Y	Y	N	NSL1	R4B4
43	FATA	WAZIR-S	BIRMAL	FT/65/14/002	F	6	14-Mar-14	0	0	Y	N	Y	N	NSL1	R4B2
44	FATA	WAZIR-N	MIRAN SHAH	FT/64/14/059	M	11	19-Mar-14	0	0	Y	Y	Y	N	NSL1	R4B4
45	FATA	WAZIR-N	MIRAN SHAH	FT/64/14/057	F	34	20-Mar-14	0	0	Y	N	Y	N	NSL1	R4B5
46	FATA	WAZIR-S	BIRMAL	FT/65/14/005	F	9	22-Mar-14	0	0	Y	Y	Y	N	NSL1	R4B2
47	SINDH	KHIGADAP	GADAP	SD/63/14/006	F	11	26-Mar-14	0	0	Y	Y	Y	Y	NSL1	R4B1
48	KPAKHTUNKHWA	PESHAWAR	PESHAWAR	KP/30/14/032	F	6	27-Mar-14	0	7+	Y	Y	Y	N	NSL1	R4B6

Table 1: List of Confirmed Polio Cases, Pakistan 2014* (3/11)

S.NO.	PROVINCE/ REGION	DISTRICT	TEHSIL	EPID NO.	SEX	AGE (m)	DATE ONSET OF PARALYSIS	NO. OPV DOSES (based on parents recall)		FEVER	Asymmetrical Paralysis	Rapid Progression	REFUSAL	WPV TYPE	GENETICS
								Routine	SIA's						Cluster
49	SINDH	KHIORANGI	ORANGI	SD/75/14/005	F	22	30-Mar-14	3	7+	Y	Y	Y	N	NSL1	R4B1
50	FATA	WAZIR-N	MIR ALI	FT/64/14/064	F	18	2-Apr-14	0	0	Y	Y	Y	N	NSL1	R4B5
51	SINDH	KHIGADAP	GADAP	SD/63/14/008	M	7	2-Apr-14	0	1	Y	N	Y	N	NSL1	R4B2
52	FATA	WAZIR-S	WANA	FT/65/14/006	F	15	3-Apr-14	0	0	Y	Y	Y	N	NSL1	R4B2
53	FATA	WAZIR-N	MIRAN SHAH	FT/64/14/066	F	18	4-Apr-14	0	0	Y	N	Y	N	NSL1	R4B5
54	FATA	WAZIR-N	MIRAN SHAH	FT/64/14/067	F	48	6-Apr-14	0	0	Y	Y	Y	N	NSL1	R4B5
55	SINDH	KHIGADAP	GADAP	SD/63/14/010	F	18	8-Apr-14	3	7+	Y	N	Y	N	NSL1	R4B2
56	FATA	WAZIR-N	MIR ALI	FT/64/14/070	F	11	8-Apr-14	0	0	Y	Y	Y	N	NSL1	R4B5
57	FATA	WAZIR-N	MIRAN SHAH	FT/64/14/068	F	78	9-Apr-14	0	0	Y	Y	Y	Y	NSL1	R4B5
58	FATA	WAZIR-N	MIRAN SHAH	FT/64/14/072	M	14	11-Apr-14	0	0	Y	Y	Y	N	NSL1	R4B5
59	KPAKHTUNKHWA	BANNU	BANNU	KP/61/14/012	M	10	19-Apr-14	0	0	Y	Y	Y	Y	NSL1	R4B5
60	FATA	WAZIR-N	MIRAN SHAH	FT/64/14/073	M	14	20-Apr-14	0	0	Y	Y	Y	N	NSL1	R4B5
61	FATA	WAZIR-S	WANA	FT/65/14/007	F	22	20-Apr-14	0	0	Y	Y	Y	N	NSL1	R4B2
62	FATA	WAZIR-N	MIRAN SHAH	FT/64/14/077	M	14	24-Apr-14	0	0	Y	Y	Y	N	NSL1	R4B4
63	FATA	WAZIR-N	MIRAN SHAH	FT/64/14/079	M	22	27-Apr-14	0	0	Y	Y	Y	N	NSL1	R4B4
64	FATA	WAZIR-N	MIRAN SHAH	FT/64/14/081	F	6	28-Apr-14	1	0	Y	Y	Y	N	NSL1	R4B4
65	FATA	WAZIR-N	MIRAN SHAH	FT/64/14/083	M	23	29-Apr-14	0	0	Y	Y	Y	N	NSL1	R4B5
66	FATA	WAZIR-N	MIR ALI	FT/64/14/082	F	6	30-Apr-14	0	0	Y	Y	Y	N	NSL1	R4B5
67	FATA	KHYBER	BARA	FT/34/14/010	M	27	1-May-14	0	0	Y	Y	Y	N	NSL1	R4B5
68	FATA	FR BANNU	FR BANNU	FT/69/14/018	F	7	2-May-14	0	0	Y	Y	Y	N	NSL1	R4B5
69	KPAKHTUNKHWA	BANNU	BANNU	KP/61/14/019	F	18	4-May-14	0	4	Y	Y	Y	Y	NSL1	R4B5
70	SINDH	KHISITE	SITE	SD/78/14/002	F	30	4-May-14	2	0	Y	Y	Y	Y	NSL1	R4B1
71	FATA	WAZIR-N	MIRAN SHAH	FT/64/14/084	F	22	7-May-14	0	0	Y	Y	Y	N	NSL1	R4B4
72	KPAKHTUNKHWA	BANNU	BANNU	KP/61/14/016	F	42	10-May-14	0	4	Y	Y	Y	N	NSL1	R4B5

Table 1: List of Confirmed Polio Cases, Pakistan 2014* (4/11)

S.NO.	PROVINCE/ REGION	DISTRICT	TEHSIL	EPID NO.	SEX	AGE (m)	DATE ONSET OF PARALYSIS	NO. OPV DOSES (based on parents recall)		FEVER	Asymmetric Paralysis	Rapid Progression	REFUSAL	WPV TYPE	GENETICS
								Routine	SIA's						Cluster
73	FATA	WAZIR-N	MIR ALI	FT/64/14/092	M	10	15-May-14	0	0	Y	Y	Y	N	NSL1	R4B5
74	FATA	WAZIR-N	MIRAN SHAH	FT/64/14/089	M	30	17-May-14	0	0	Y	Y	Y	N	NSL1	R4B4
75	FATA	WAZIR-N	MIRAN SHAH	FT/64/14/091	M	8	17-May-14	0	0	Y	N	N	N	NSL1	R4B4
76	FATA	WAZIR-N	MIRAN SHAH	FT/64/14/090	M	23	17-May-14	0	0	Y	Y	Y	N	NSL1	R4B5
77	KPAKHTUNKHWA	BANNU	BANNU	KP/61/14/017	M	18	19-May-14	0	0	Y	Y	Y	Y	NSL1	R4B5
78	FATA	WAZIR-N	MIRAN SHAH	FT/64/14/094	F	36	21-May-14	0	0	Y	N	N	N	NSL1	R4B4
79	FATA	WAZIR-N	MIRAN SHAH	FT/64/14/098	F	34	26-May-14	0	0	Y	N	Y	N	NSL1	R4B4
80	FATA	KHYBER	BARA	FT/34/14/014	M	18	27-May-14	0	0	Y	Y	Y	N	NSL1	R4B5
81	FATA	WAZIR-N	MIRAN SHAH	FT/64/14/101	M	5	28-May-14	0	0	Y	N	Y	N	NSL1	R4B5
82	FATA	WAZIR-N	MIRAN SHAH	FT/64/14/100	F	4	30-May-14	0	2	Y	N	Y	N	NSL1	R4B5
83	FATA	WAZIR-N	MIRAN SHAH	FT/64/14/104	M	28	3-Jun-14	0	1	Y	Y	Y	N	NSL1	R4B5
84	FATA	KHYBER	JAMRUD	FT/34/14/016	M	11	4-Jun-14	0	0	Y	Y	Y	N	NSL1	R4B5
85	SINDH	KHILANDHI	LANDHI	SD/69/14/008	M	12	6-Jun-14	0	0	Y	Y	Y	Y	NSL1	R4B5
86	FATA	KHYBER	BARA	FT/34/14/021	F	12	9-Jun-14	0	3	Y	Y	Y	N	NSL1	R4B5
87	KPAKHTUNKHWA	PESHAWAR	PESHAWAR	KP/30/14/062	F	4	12-Jun-14	0	0	Y	Y	Y	Y	NSL1	R4B5
88	KPAKHTUNKHWA	MARDAN	MARDAN	KP/40/14/046	M	4	15-Jun-14	0	0	Y	Y	Y	Y	NSL1	R4B6
89	FATA	KHYBER	BARA	FT/34/14/019	F	60	16-Jun-14	0	0	Y	Y	Y	N	NSL1	R4B5
90	KPAKHTUNKHWA	BANNU	BANNU	KP/61/14/022	M	10	16-Jun-14	0	2	Y	Y	Y	Y	NSL1	R4B5
91	FATA	WAZIR-N	MIRAN SHAH	FT/64/14/109	M	24	20-Jun-14	0	3	Y	N	N	N	NSL1	R4B5
92	SINDH	KHINORTH	NORTH	SD/73/14/004	M	66	20-Jun-14	0	1	Y	Y	Y	Y	NSL1	R4B5
93	SINDH	KHIGADAP	GADAP	SD/63/14/022	M	21	21-Jun-14	0	5	Y	Y	Y	N	NSL1	R4B1
94	FATA	KHYBER	BARA	FT/34/14/023	F	14	23-Jun-14	0	0	Y	Y	Y	N	NSL1	R4B5
95	FATA	WAZIR-N	MIRAN SHAH	FT/64/14/110	F	18	24-Jun-14	0	0	Y	Y	Y	N	NSL1	R4B4
96	FATA	KHYBER	BARA	FT/34/14/024	M	18	24-Jun-14	0	0	Y	Y	Y	N	NSL1	R4B5

Table 1: List of Confirmed Polio Cases, Pakistan 2014* (5/11)

S.NO.	PROVINCE/ REGION	DISTRICT	TEHSIL	EPID NO.	SEX	AGE (m)	DATE ONSET OF PARALYSIS	NO. OPV DOSES (based on parents recall)		FEVER	Asymmetric Paralysis	Rapid Progression	REFUSAL	WPV TYPE	GENETICS
								Routine	SIA's						Cluster
97	KPAKHTUNKHWA	LAKKIMRWT	LAKKIMRWT	KP/62/14/021	F	24	24-Jun-14	0	0	Y	Y	Y	Y	NSL1	R4B5
98	KPAKHTUNKHWA	PESHAWAR	PESHAWAR	KP/30/14/066	F	6	24-Jun-14	1	0	Y	Y	Y	Y	NSL1	R4B6
99	SINDH	SANGHAR	SANGHAR	SD/32/14/014	M	21	24-Jun-14	3	7	Y	Y	Y	N	NSL1	R4B1
100	FATA	WAZIR-S	WANA	FT/65/14/012	M	18	28-Jun-14	0	0	Y	Y	Y	N	NSL1	R4B2
101	BALUCHISTAN	KABDULAH	KABDULAH	BN/14/14/009	F	18	2-Jul-14	2	0	Y	Y	Y	Y	NSL1	R4B2
102	FATA	KHYBER	BARA	FT/34/14/025	F	8	3-Jul-14	0	1	Y	Y	Y	N	NSL1	R4B5
103	KPAKHTUNKHWA	PESHAWAR	PESHAWAR	KP/30/14/067	F	12	4-Jul-14	0	0	Y	Y	Y	Y	NSL1	R4B5
104	FATA	WAZIR-N	MIRAN SHAH	FT/64/14/112	M	18	6-Jul-14	0	1	Y	Y	Y	N	NSL1	R4B5
105	FATA	KHYBER	BARA	FT/34/14/026	F	18	6-Jul-14	0	0	Y	N	Y	N	NSL1	R4B5
106	PUNJAB	CHAKWAL	KALAR KAHAR	PB/13/14/019	F	35	7-Jul-14	3	7+	N	Y	Y	N	NSL1	R4B5
107	SINDH	KHILANDHI	LANDHI	SD/69/14/012	M	12	8-Jul-14	2	6	N	Y	Y	N	NSL1	R4B5
108	FATA	WAZIR-S	WANA	FT/65/14/013	F	21	9-Jul-14	0	0	Y	Y	Y	N	NSL1	R4B2
109	FATA	WAZIR-S	BIRMAL	FT/65/14/014	F	12	12-Jul-14	0	0	Y	Y	Y	N	NSL1	R4B2
110	KPAKHTUNKHWA	PESHAWAR	PESHAWAR	KP/30/14/070	F	10	12-Jul-14	3	6	N	Y	Y	N	NSL1	R4B5
111	FATA	WAZIR-N	RAZMAK	FT/64/14/122	M	12	15-Jul-14	0	0	Y	Y	Y	N	NSL1	R4B5
112	FATA	WAZIR-N	MIRAN SHAH	FT/64/14/120	M	12	16-Jul-14	3	0	Y	Y	Y	N	NSL1	R4B4
113	FATA	WAZIR-N	RAZMAK	FT/64/14/114	F	17	16-Jul-14	0	0	Y	Y	Y	N	NSL1	R4B5
114	FATA	KHYBER	BARA	FT/34/14/028	F	12	18-Jul-14	0	0	Y	Y	Y	N	NSL1	R4B5
115	FATA	KHYBER	BARA	FT/34/14/029	M	8	20-Jul-14	0	0	Y	Y	Y	N	NSL1	R4B5
116	FATA	KHYBER	BARA	FT/34/14/027	M	18	20-Jul-14	0	2	Y	N	Y	N	NSL1	R4B5
117	FATA	KHYBER	BARA	FT/34/14/030	M	30	23-Jul-14	0	3	Y	N	Y	N	NSL1	R4B5
118	KPAKHTUNKHWA	BANNU	BANNU	KP/61/14/800	F	80	23-Jul-14	0	0	Y	Y	Y	Y	NSL1	R4B4
119	FATA	WAZIR-N	MIR ALI	FT/64/14/119	M	16	24-Jul-14	0	4	Y	Y	Y	N	NSL1	R4B5
120	FATA	WAZIR-S	WANA	FT/65/14/016	F	36	25-Jul-14	0	0	Y	N	Y	N	NSL1	R4B2

Table 1: List of Confirmed Polio Cases, Pakistan 2014* (6/11)

S.NO.	PROVINCE/ REGION	DISTRICT	TEHSIL	EPID NO.	SEX	AGE (m)	DATE ONSET OF PARALYSIS	NO. OPV DOSES (based on parents recall)		FEVER	Asymmetric Paralysis	Rapid Progression	REFUSAL	WPV TYPE	GENETICS
								Routine	SIA's						Cluster
121	FATA	KHYBER	BARA	FT/34/14/038	F	8	26-Jul-14	0	0	Y	Y	Y	N	NSL1	R4B5
122	FATA	WAZIR-N	RAZMAK	FT/64/14/117	M	18	27-Jul-14	0	2	Y	Y	Y	N	NSL1	R4B5
123	KPAKHTUNKHWA	BANNU	BANNU	KP/61/14/027	M	12	27-Jul-14	0	0	Y	Y	Y	Y	NSL1	R4B5
124	SINDH	KHIGADAP	GADAP	SD/63/14/024	F	22	27-Jul-14	0	5	Y	Y	Y	N	NSL1	R4B1
125	FATA	KHYBER	BARA	FT/34/14/039	M	12	28-Jul-14	0	0	Y	N	Y	N	NSL1	R4B5
126	FATA	KHYBER	BARA	FT/34/14/032	M	24	28-Jul-14	0	2	Y	Y	Y	N	NSL1	R4B5
127	FATA	WAZIR-S	LADHA	FT/65/14/017	M	18	28-Jul-14	0	1	Y	Y	Y	N	NSL1	R4B5
128	KPAKHTUNKHWA	TANK	TANK	KP/63/14/007	M	12	29-Jul-14	3	3	Y	Y	N	N	NSL1	R4B5
129	FATA	KHYBER	BARA	FT/34/14/034	M	16	30-Jul-14	0	0	Y	Y	Y	N	NSL1	R4B5
130	KPAKHTUNKHWA	BANNU	BANNU	KP/61/14/032	M	15	30-Jul-14	0	2	Y	Y	Y	Y	NSL1	R4B5
131	BALUCHISTAN	QUETTA	QUETTA CITY	BN/11/14/013	M	12	3-Aug-14	3	7	Y	Y	Y	N	NSL1	R4B5
132	FATA	WAZIR-S	WANA	FT/65/14/018	M	10	4-Aug-14	0	0	Y	Y	Y	N	NSL1	R4B2
133	FATA	KHYBER	BARA	FT/34/14/045	M	6	4-Aug-14	0	0	Y	Y	Y	N	NSL1	R4B5
134	KPAKHTUNKHWA	TANK	TANK	KP/63/14/009	M	12	4-Aug-14	0	4	Y	N	Y	N	NSL1	R4B1
135	KPAKHTUNKHWA	LAKKIMRWT	LAKKIMRWT	KP/62/14/026	F	12	6-Aug-14	0	0	Y	Y	Y	N	NSL1	R4B5
136	FATA	KHYBER	BARA	FT/34/14/042	F	12	7-Aug-14	0	0	Y	Y	Y	N	NSL1	R4B5
137	FATA	WAZIR-S	BIRMAL	FT/65/14/023	F	33	9-Aug-14	0	0	Y	Y	Y	N	NSL1	R4B2
138	FATA	KHYBER	BARA	FT/34/14/049	M	18	10-Aug-14	0	0	Y	Y	Y	N	NSL1	R4B6
139	SINDH	KHIGADAP	GADAP	SD/63/14/032	F	12	10-Aug-14	0	2	Y	Y	Y	Y	NSL1	R4B5
140	FATA	WAZIR-S	BIRMAL	FT/65/14/024	F	18	11-Aug-14	0	0	Y	Y	Y	N	NSL1	R4B5
141	FATA	KHYBER	BARA	FT/34/14/047	M	18	11-Aug-14	0	0	Y	Y	Y	Y	NSL1	R4B5
142	FATA	KHYBER	JAMRUD	FT/34/14/055	M	19	15-Aug-14	0	2	Y	Y	Y	Y	NSL1	R4B6
143	FATA	KHYBER	BARA	FT/34/14/048	M	30	15-Aug-14	0	0	Y	Y	Y	N	NSL1	R4B5
144	PUNJAB	BHAKKAR	DARYA KHAN	PB/44/14/026	F	18	16-Aug-14	0	7+	Y	Y	Y	N	NSL1	R4B2

Table 1: List of Confirmed Polio Cases, Pakistan 2014* (7/11)

S.NO.	PROVINCE/ REGION	DISTRICT	TEHSIL	EPID NO.	SEX	AGE (m)	DATE ONSET OF PARALYSIS	NO. OPV DOSES (based on parents recall)		FEVER	Asymmetrical Paralysis	Rapid Progression	REFUSAL	WPV TYPE	GENETICS
								Routine	SIA's						Cluster
145	SINDH	KHIGADAP	GADAP	SD/63/14/027	M	10	16-Aug-14	0	0	Y	Y	Y	Y	NSL1	R4B5
146	FATA	WAZIR-N	RAZMAK	FT/64/14/125	F	23	17-Aug-14	0	0	Y	N	Y	N	NSL1	R4B5
147	FATA	WAZIR-N	MIRAN SHAH	FT/64/14/126	F	6	17-Aug-14	0	0	Y	Y	Y	N	NSL1	R4B5
148	KPAKHTUNKHWA	BUNIR	SOWARAI	KP/22/14/026	F	18	17-Aug-14	0	4	Y	N	Y	N	NSL1	R4B5
149	SINDH	KHIORANGI	ORANGI	SD/75/14/010	F	22	17-Aug-14	0	0	N	N	Y	Y	NSL1	R4B5
150	FATA	WAZIR-S	WANA	FT/65/14/027	F	7	18-Aug-14	0	0	Y	Y	Y	N	NSL1	R4B2
151	KPAKHTUNKHWA	TANK	TANK	KP/63/14/011	F	13	18-Aug-14	0	1	Y	Y	Y	N	NSL1	R4B1
152	FATA	WAZIR-N	RAZMAK	FT/64/14/127	M	30	20-Aug-14	0	2	Y	Y	Y	N	NSL1	R4B5
153	FATA	KHYBER	BARA	FT/34/14/064	M	12	21-Aug-14	3	7	Y	Y	Y	N	NSL1	R4B5
154	KPAKHTUNKHWA	BUNIR	SOWARAI	KP/22/14/025	F	24	22-Aug-14	0	4	Y	N	Y	N	NSL1	R4B5
155	KPAKHTUNKHWA	PESHAWAR	PESHAWAR	KP/30/14/102	F	22	22-Aug-14	0	2	N	N	Y	Y	NSL1	R4B5
156	FATA	KHYBER	BARA	FT/34/14/058	F	18	23-Aug-14	0	0	Y	Y	Y	N	NSL1	R4B5
157	FATA	KHYBER	BARA	FT/34/14/057	M	18	23-Aug-14	0	0	Y	Y	Y	N	NSL1	R4B5
158	FATA	KHYBER	BARA	FT/34/14/056	M	13	23-Aug-14	0	2	Y	Y	Y	N	NSL1	R4B5
159	FATA	KHYBER	BARA	FT/34/14/061	F	13	24-Aug-14	0	0	N	Y	Y	N	NSL1	R4B5
160	FATA	KHYBER	BARA	FT/34/14/060	M	12	24-Aug-14	0	0	Y	Y	Y	N	NSL1	R4B5
161	KPAKHTUNKHWA	PESHAWAR	PESHAWAR	KP/30/14/091	F	8	25-Aug-14	0	0	Y	Y	Y	Y	NSL1	R4B5
162	BALUCHISTAN	KABDULAH	CHAMAN	BN/14/14/018	M	8	26-Aug-14	0	0	Y	Y	Y	Y	NSL1	R4B2
163	FATA	KHYBER	BARA	FT/34/14/074	F	46	26-Aug-14	0	0	Y	Y	Y	N	NSL1	R4B5
164	FATA	WAZIR-S	WANA	FT/65/14/030	F	9	28-Aug-14	0	0	Y	Y	Y	N	NSL1	R4B2
165	FATA	KHYBER	BARA	FT/34/14/073	F	16	29-Aug-14	0	0	Y	Y	Y	N	NSL1	R4B6
166	FATA	KHYBER	BARA	FT/34/14/066	M	29	30-Aug-14	0	0	Y	Y	Y	N	NSL1	R4B5
167	FATA	KHYBER	JAMRUD	FT/34/14/069	M	11	30-Aug-14	0	0	Y	Y	Y	N	NSL1	R4B5
168	KPAKHTUNKHWA	PESHAWAR	PESHAWAR	KP/30/14/097	M	15	30-Aug-14	7	7	Y	Y	Y	N	NSL1	R4B5

Table 1: List of Confirmed Polio Cases, Pakistan 2014* (8/11)

S.NO.	PROVINCE/ REGION	DISTRICT	TEHSIL	EPID NO.	SEX	AGE (m)	DATE ONSET OF PARALYSIS	NO. OPV DOSES (based on parents recall)		FEVER	Asymmetrical Paralysis	Rapid Progression	REFUSAL	WPV TYPE	GENETICS
								Routine	SIA's						Cluster
169	SINDH	KHIBINQASIM	BINQASIM	SD/62/14/009	M	20	30-Aug-14	7	6	Y	Y	Y	N	NSL1	
170	BALUCHISTAN	QUETTA	QUETTA CITY	BN/11/14/016	F	18	30-Aug-14	0	7	Y	Y	Y	N	NSL1	R4B2
171	FATA	WAZIR-N	RAZMAK	FT/64/14/128	M	12	1-Sep-14	0	0	Y	Y	N	N	NSL1	R4B5
172	SINDH	KHILIAQAT	LIAQATABAD	SD/70/14/010	M	24	1-Sep-14	0	1	Y	N	Y	N	NSL1	R4B5
173	BALUCHISTAN	QUETTA	QUETTA CITY	BN/11/14/014	M	23	2-Sep-14	0	0	Y	Y	Y	Y	NSL1	R4B2
174	FATA	KHYBER	BARA	FT/34/14/068	M	8	2-Sep-14	0	1	Y	N	Y	N	NSL1	R4B5
175	KPAKHTUNKHWA	TANK	TANK	KP/63/14/014	M	8	3-Sep-14	0	7	Y	Y	Y	N	NSL1	R4B1
176	SINDH	KHIGADAP	GADAP	SD/63/14/034	M	18	3-Sep-14	0	0	Y	N	Y	N	NSL1	R4B5
177	FATA	KHYBER	BARA	FT/34/14/075	M	6	4-Sep-14	0	0	Y	Y	Y	N	NSL1	R4B5
178	SINDH	KHIGADAP	GADAP	SD/63/14/035	M	25	4-Sep-14	0	1	Y	Y	Y	N	NSL1	R4B5
179	FATA	KHYBER	BARA	FT/34/14/076	M	7	4-Sep-14	0	0	Y	Y	Y	N	NSL1	R4B5
180	FATA	WAZIR-N	RAZMAK	FT/64/14/129	M	9	5-Sep-14	0	0	Y	Y	Y	N	NSL1	R4B5
181	FATA	KHYBER	BARA	FT/34/14/077	F	15	5-Sep-14	3	0	Y	Y	Y	N	NSL1	R4B5
182	KPAKHTUNKHWA	TORGHAR	TORGHAR	KP/15/14/006	M	36	6-Sep-14	0	0	Y	N	Y	N	NSL1	R4B2
183	FATA	WAZIR-N	RAZMAK	FT/64/14/130	F	18	6-Sep-14	0	0	Y	Y	Y	N	NSL1	R4B5
184	KPAKHTUNKHWA	MARDAN	MARDAN	KP/40/14/083	M	14	6-Sep-14	0	0	Y	Y	Y	Y	NSL1	R4B6
185	KPAKHTUNKHWA	NOWSHERA	NOWSHERA	KP/32/14/031	F	6	6-Sep-14	2	1	N	Y	Y	N	NSL1	R4B5
186	FATA	KHYBER	BARA	FT/34/14/078	F	12	7-Sep-14	0	1	Y	Y	Y	N	NSL1	R4B5
187	KPAKHTUNKHWA	PESHAWAR	PESHAWAR	KP/30/14/096	M	4	8-Sep-14	0	0	Y	Y	Y	N	NSL1	R4B5
188	FATA	KHYBER	BARA	FT/34/14/079	F	18	8-Sep-14	0	0	Y	Y	Y	N	NSL1	R4B5
189	FATA	FR BANNU	FR BANNU	FT/69/14/008	M	10	9-Sep-14	0	1	Y	Y	Y	N	NSL1	R4B5
190	FATA	WAZIR-S	BIRMAL	FT/65/14/034	M	13	9-Sep-14	0	0	Y	Y	Y	N	NSL1	R4B5
191	BALUCHISTAN	KABDULAH	KABDULAH	BN/14/14/023	M	12	11-Sep-14	0	0	Y	Y	Y	Y	NSL1	R4B2
192	FATA	FR BANNU	FR BANNU	FT/69/14/024	F	6	12-Sep-14	0	0	Y	Y	Y	N	NSL1	R4B5

Table 1: List of Confirmed Polio Cases, Pakistan 2014* (9/11)

S.NO.	PROVINCE/ REGION	DISTRICT	TEHSIL	EPID NO.	SEX	AGE (m)	DATE ONSET OF PARALYSIS	NO. OPV DOSES (based on parents recall)		FEVER	Asymmetric Paralysis	Rapid Progression	REFUSAL	WPV TYPE	GENETICS
								Routine	SIA's						Cluster
193	KPAKHTUNKHWA	PESHAWAR	PESHAWAR	KP/30/14/103	M	7	12-Sep-14	3	0	Y	Y	Y	N	NSL1	R4B5
194	KPAKHTUNKHWA	BUNIR	SOWARAI	KP/22/14/030	F	48	13-Sep-14	0	7	Y	Y	Y	N	NSL1	R4B5
195	FATA	KHYBER	BARA	FT/34/14/080	F	12	14-Sep-14	0	1	Y	Y	Y	N	NSL1	R4B5
196	FATA	KHYBER	BARA	FT/34/14/081	F	9	15-Sep-14	0	0	Y	N	Y	N	NSL1	R4B5
197	FATA	KHYBER	BARA	FT/34/14/084	F	11	15-Sep-14	0	1	Y	Y	Y	N	NSL1	R4B5
198	FATA	KHYBER	BARA	FT/34/14/088	M	14	15-Sep-14	0	1	Y	N	Y	N	NSL1	R4B5
199	KPAKHTUNKHWA	MARDAN	MARDAN	KP/40/14/089	M	17	16-Sep-14	0	0	Y	Y	Y	N	NSL1	R4B6
200	FATA	KHYBER	BARA	FT/34/14/085	M	13	16-Sep-14	0	0	Y	Y	Y	N	NSL1	R4B5
201	FATA	KHYBER	BARA	FT/34/14/090	M	20	17-Sep-14	0	1	Y	Y	Y	N	NSL1	R4B5
202	KPAKHTUNKHWA	MARDAN	MARDAN	KP/40/14/087	F	4	17-Sep-14	3	0	Y	Y	Y	N	NSL1	R4B5
203	PUNJAB	SHEIKUPURA	SHEIKUPURA	PB/33/14/053	M	8	18-Sep-14	3	3	Y	N	Y	N	NSL1	R4B6
204	FATA	KHYBER	BARA	FT/34/14/092	M	12	19-Sep-14	0	0	Y	Y	Y	N	NSL1	R4B5
205	KPAKHTINKHWA	PESHAWAR	PESHAWAR	KP/30/14/101	M	8	20-Sep-14	7+	0	Y	Y	Y	N	NSL1	R4B5
206	KPAKHTUNKHWA	TANK	TATTA	KP/63/14/017	M	38	22-Sep-14	0	2	Y	Y	Y	N	NSL1	R4B5
207	KPAKHTUNKHWA	LAKKIMRWT	LAKKIMRWT	KP/62/14/033	M	3	22-Sep-14	0	2	N	Y	Y	N	NSL1	R4B5
208	FATA	KHYBER	BARA	FT/34/14/097	F	18	27-Sep-14	0	3	Y	N	Y	N	NSL1	R4B5
209	FATA	WAZIR-S	WANA	FT/65/14/039	F	8	23-Sep-14	0	0	Y	N	Y	N	NSL1	R4B2
210	FATA	KHYBER	BARA	FT/34/14/098	M	11	1-Oct-14	0	0	Y	N	Y	N	NSL1	R4B5
211	FATA	KHYBER	BARA	FT/34/14/100	M	30	1-Oct-14	0	0	N	N	N	N	NSL1	R4B5
212	FATA	KHYBER	BARA	FT/34/14/099	F	12	27-Sep-14	0	3	Y	Y	Y	N	NSL1	R4B5
213	KPAKHTUNKHWA	PESHAWAR	PESHAWAR	KP/30/14/108	F	14	1-Oct-14	0	3	Y	Y	Y	N	NSL1	R4B5
214	SINDH	DADU	MEHAR	SD/24/14/032	F	7	26-Sep-14	0	2	Y	N	Y	N	NSL1	
215	FATA	WAZIR-N	MIR ALI	FT/64/14/133	F	24	16-Sep-14	0	0	Y	Y	Y	N	NSL1	R4B5
216	FATA	FR BANNU	FR BANNU	FT/69/14/025	M	9	25-Sep-14	0	1	Y	N	Y	N	NSL1	R4B5

Table 1: List of Confirmed Polio Cases, Pakistan 2014* (10/11)

S.NO.	PROVINCE/ REGION	DISTRICT	TEHSIL	EPID NO.	SEX	AGE (m)	DATE ONSET OF PARALYSIS	NO. OPV DOSES (based on parents recall)		FEVER	Asymmetric Paralysis	Rapid Progression	REFUSAL	WPV TYPE	GENETICS
								Routine	SIA's						Cluster
217	SINDH	KHIGADAP	GADAP	SD/63/14/038	F	18	20-Sep-14	0	5	Y	N	Y	Y	NSL1	R4B5
218	BALUCHISTAN	ZHOB	ZHOB	BN/21/14/004	F	30	29-Sep-14	0	0	Y	Y	Y	Y	NSL1	R4B2
219	SINDH	KHIKORANGI	KORANGI	SD/68/14/008	M	12	1-Oct-14	0	0	Y	N	Y	Y	NSL1	R4B5
220	SINDH	KHIKORANGI	KORANGI	SD/68/14/007	M	36	27-Sep-14	0	0	Y	N	Y	Y	NSL1	R4B5
221	KPAKHTUNKHWA	PESHAWAR	PESHAWAR	KP/30/14/113	F	5	10-Oct-14	2	3	Y	Y	Y	N	NSL1	R4B5
222	KPAKHTUNKHWA	PESHAWAR	PESHAWAR	KP/30/14/109	M	14	16-Sep-14	3	2	Y	Y	Y	N	NSL1	R4B5
223	KPAKHTUNKHWA	PESHAWAR	PESHAWAR	KP/30/14/105	M	10	30-Sep-14	0	5	Y	Y	Y	N	NSL1	R4B5
224	FATA	KHYBER	BARA	FT/34/14/110	M	23	10-Oct-14	0	0	Y	Y	Y	N	NSL1	R4B5
225	FATA	KHYBER	JAMRUD	FT/34/14/111	M	8	16-Oct-14	0	0	Y	Y	Y	N	NSL1	
226	FATA	KHYBER	JAMRUD	FT/34/14/108	F	9	17-Oct-14	0	0	Y	Y	Y	N	NSL1	
227	FATA	KHYBER	LANDI KOTAL	FT/34/14/107	F	10	15-Sep-14	0	0	Y	Y	Y	N	NSL1	
228	FATA	KHYBER	BARA	FT/34/14/101	M	19	3-Oct-14	3	0	Y	Y	Y	N	NSL1	R4B5
229	FATA	KHYBER	BARA	FT/34/14/106	M	16	11-Oct-14	0	1	Y	Y	Y	N	NSL1	R4B5
230	KPAKHTUNKHWA	CHARSADA	SHABQADAR	KP/31/14/052	M	23	16-Oct-14	0	0	N	N	Y	Y	NSL1	
231	FATA	FR BANNU	FR BANNU	FT/69/14/026	M	16	11-Oct-14	0	1	Y	Y	Y	N	NSL1	R4B5
232	FATA	WAZIR-S	WANA	FT/65/14/022	M	18	20-Oct-14	0	0	Y	N	Y	N	NSL1	
233	BALUCHISTAN	QUETTA	QUETTA CITY	BN/11/14/021	M	10	16-Oct-14	4	4	Y	Y	Y	N	NSL1	
234	BALUCHISTAN	KABDULAH	KABDULAH	BN/14/14/026	M	20	17-Oct-14	0	0	Y	Y	Y	Y	NSL1	
235	BALUCHISTAN	KABDULAH	CHAMAN	BN/14/14/025	M	21	6-Oct-14	0	0	Y	Y	Y	N	NSL1	
236	FATA	KHYBER	BARA	FT/34/14/112	F	11	4-Oct-14	0	0	Y	N	Y	N	NSL1	
237	SINDH	BADIN	MATLI	SD/23/14/036	M	8	13-Oct-14	2	3	Y	Y	Y	N	NSL1	
238	BALUCHISTAN	KABDULAH	CHAMAN	BN/14/14/027	F	18	17-Oct-14	0	0	Y	N	Y	Y	NSL1	
239	SINDH	KHIBINQASIM	BINQASIM	SD/62/14/011	M	8	22-Oct-14	^	^	Y	Y	Y	N	NSL1	
240	FATA	KHYBER	BARA	FT/34/14/117	M	6	1-Nov-14	0	0	Y	N	Y	N	NSL1	

Table 1: List of Confirmed Polio Cases, Pakistan 2014* (11/11)

S.NO.	PROVINCE/ REGION	DISTRICT	TEHSIL	EPID NO.	SEX	AGE (m)	DATE ONSET OF PARALYSIS	NO. OPV DOSES (based on parents recall)		FEVER	Asymetric Paralysis	Rapid Progression	REFUSAL	WPV TYPE	GENETICS
								Routine	SIA's						Cluster
241	FATA	KHYBER	JAMRUD	FT/34/14/116	M	12	25-Oct-14	0	1	Y	Y	Y	N	NSL1	
242	FATA	KHYBER	JAMRUD	FT/34/14/113	M	7	22-Oct-14	0	0	Y	Y	Y	N	NSL1	
243	KPAKHTUNKHWA	MARDAN	MARDAN	KP/40/14/100	F	8	10-Oct-14	2	5	Y	Y	Y	N	NSL1	
244	FATA	WAZIR-S	WANA	FT/65/14/041	F	36	8-Oct-14	0	0	Y	Y	Y	N	NSL1	
245	FATA	KHYBER	BARA	FT/34/14/122	F	15	1-Nov-14	0	0	N	Y	Y	Y	NSL1	
246	FATA	KHYBER	BARA	FT/34/14/119	F	24	1-Nov-14	0	0	N	Y	Y	Y	NSL1	
247	KPAKHTUNKHWA	PESHAWAR	PESHAWAR	KP/30/14/127	F	45	3-Nov-14	3	7	Y	Y	Y	N	NSL1	
248	KPAKHTUNKHWA	PESHAWAR	PESHAWAR	KP/30/14/126	F	18	1-Nov-14	3	7+	Y	Y	Y	N	NSL1	
249	KPAKHTUNKHWA	PESHAWAR	PESHAWAR	KP/30/14/130	M	11	31-Oct-14	0	1	Y	N	Y	N	NSL1	
250	KPAKHTUNKHWA	PESHAWAR	PESHAWAR	KP/30/14/128	M	18	3-Nov-14	0	7+	Y	N	Y	N	NSL1	
251	FATA	KHYBER	BARA	FT/34/14/126	M	30	3-Nov-14	0	3	Y	N	Y	N	NSL1	
252	FATA	WAZIR-S	LADHA	FT/65/14/045	F	24	1-Nov-14	0	0	Y	Y	Y	N	NSL1	
253	FATA	WAZIR-S	BIRMAL	FT/65/14/044	F	25	27-Oct-14	0	0	Y	N	Y	N	NSL1	
254	FATA	FR BANNU	FR BANNU	FT/69/14/027	M	55	10-Nov-14	0	3	Y	N	Y	N	NSL1	
255	BALUCHISTAN	KABDULAH	CHAMAN	BN/14/14/029	M	14	3-Nov-14	0	7	Y	Y	Y	N	NSL1	
256	KPAKHTUNKHWA	KARAK	TAKHT E NASRATI	KP/51/14/024	F	11	2-Nov-14	1	1	Y	Y	Y	N	NSL1	
257	SINDH	KHISITE	SITE	SD/78/14/013	F	14	26-Oct-14	0	6	Y	N	Y	N	NSL1	
258	FATA	KHYBER	BARA	FT/34/14/125	M	11	2-Nov-14	0	0	Y	Y	Y	N	NSL1	
259	BALUCHISTAN	QUETTA	QUETTA CITY	BN/11/14/024	F	18	11-Nov-14	0	0	Y	Y	Y	Y	NSL1	
260	BALUCHISTAN	KHUZDAR	KHUZDAR	BN/54/14/002	M	96	23-Oct-14	7	0	Y	Y	Y	N	NSL1	

New Case

Table 2: LAB Update 2014*

Month of Onset	AFP Cases	No virus isolated	Cases Under Process		Isolated Viruses from stools						
			Culture	ITD	Vaccine viruses		NPEV		Wild	Results within 14 days	
			n	n	n	%	n	%	n	n	%
January	383	267	0	0	25	7	69	18%	17	366	96%
February	368	271	0	0	35	10	42	11%	18	350	95%
March	391	267	0	0	41	10	68	17%	14	378	97%
April	419	277	0	0	12	3	109	26%	17	402	96%
May	505	314	0	0	20	4	149	30%	16	489	97%
June	425	303	0	0	16	4	87	20%	18	407	96%
July	398	254	0	0	11	3	101	25%	30	368	92%
August	510	301	2	0	20	4	147	29%	39	469	92%
September	518	281	2	0	41	8	146	28%	49	469	91%
October	461	259	11	3	44	10	114	25%	29	417	90%
November	236	42	159	6	0	0	15	6%	13	57	24%
Pakistan	4614	2836	174	9	265	6	1047	23%	260	4172	90%

* Data as of 10-11-2014

Table 3: Urgent / ITD Pending Cases (1/2)

Basic information											OPV doses				Urgent		Prov Diagnosis	Lab update			Remarks
S. #	District	Prio	Tehsil rity	Union council	Epid number	Date of Onset	Age (M)	Sex	Date of 1st stool	Stool Adeq	R1	S1As	Last 6 S1As	Last dose	Field Y	NSC Y		Lab No.	Days Inoc	Culture update	
Isolates pending for ITSD																					
1	KABDULAH	1	CHAMAN	PURANA	BN/14/14/028	04-Nov-14	8	F	06-Nov-14	Y	0	1	1	24-Jun-14	Y	Y	POUD/MYE/IMS/INI NEU RIMS	5776	4	P1	Discardant O
2	KSAIFULAH	4	MUSMILBAGH	MUSUM BAGH	BN/25/14/004	06-Nov-14	9	M	08-Nov-14	Y	3	0	0	26-Oct-14	Y	Y	GBS/POUD/MYE/IMS	5777	4	P1	Discardant O
3	KHYBER	1	BARA	JANCI	FT/34/14/118	30-Oct-14	12	F	05-Nov-14	Y	0	1	0	23-Oct-14	Y	Y	GBS	5683	8	P2	Discardant O
4	KHYBER	1	JAM RUD	GHUNDI	FT/34/14/124	01-Nov-14	9	F	05-Nov-14	Y	0	0	0		Y	Y	GBS/POUD/INI NEU RIMS	5702	6	P2	Discardant O
5	HANGU §	1	#	#	KP/54/14/012-C3		24	M	13-Nov-14		-	-		16-Sep-14	N	-		5821	4	SL1,2	Waiting rRT-PCR for VDPV
6	HANGU §	1	#	#	KP/54/14/012-C1		24	M	13-Nov-14		-	-		16-Sep-14	N	-		5819	4	SL2	Waiting rRT-PCR for VDPV screening
7	PESHAWAR *	1	PESHAWAR	#	KP/30/14/131	06-Nov-14		M	13-Nov-14		#	#	#		N	*		5864	5	L20B+	
8	TANK	1	TANK	TATTA	KP/63/14/024	03-Nov-14	12	M	08-Nov-14	Y	0	7+	6	29-Sep-14	N		TRAU/MATIC/NEU RIMS	5753	5	P1	Discardant O
9	TANK	1	TANK	SHEIKH UTTAR	KP/63/14/025	30-Oct-14	15	M	08-Nov-14	Y	0	7+	6	28-Sep-14	N		TRAU/MATIC/NEU RIMS/ ART+RIMS	5754	5	P1	Discardant O
10	BATAGRAM §	4	ALLAI	JAMBERA	KP/11/14/014-C2		19	F	07-Nov-14	-	-	-	-	20-Oct-14	N	-		5699	7	P2	Discardant O
11	SWAT	4	SWAT	KHUZA KHELA	KP/24/14/030	03-Nov-14	21	M	07-Nov-14	Y	0	7	6	20-Oct-14	N		MEININGIMS	5727	7	L20B+	
12	SHIKARPUR	2	SHIKARPUR	HUMAYOON	SD/52/14/035	28-Oct-14	4	F	04-Nov-14	Y	0	0	0		N		MYELEGIA	5730	7	L20B+	
Reported urgent (by field / NSC criteria)																					
13	KHYBER	1	JAM RUD	GHUNDAI	FT/34/14/127	01-Nov-14	8	F	13-Nov-14	Y	1	4	-	30-Oct-14	Y	#	POUD/GBS	5833	8	UP	
14	WAZIR-N	1	RAZMAK	GARYUM	FT/64/14/142	01-Nov-14	6	M	11-Nov-14	Y	0	0	0		Y	N	POUD/MYE/IMS	5783	10	UP	
15	WAZIR-S	1	WANA	AZAM WARSAK	FT/65/14/047	04-Nov-14	13	M	13-Nov-14	Y	0	0	0	13-Nov-14	Y	Y	POUD/MYE/IMS	5865	6	UP	
16	PESHAWAR	1	PESHAWAR	MERA KACHORI	KP/30/14/133	20-Oct-14	14	F	10-Nov-14	N	0	0	1	27-Sep-14	Y	N	POUD	5807	10	UP	
17	BATAGRAM	4	ALLAI	JAMBERA	KP/11/14/014	18-Sep-14	48	M	07-Nov-14	Y	3	6	6	20-Oct-14	N	-	HYPOKLEMIA/PCM	4770	13	UP	INDEX CASE

*New addition § New results #Data not available ✖ NSC Criteria = Fever, Rapid Progress, Age < 48 months and OPV Doses < 7 UP = Under process
Urgent (Field/NSC) / Inadequate specimens / Age 12-35 months / Zero OPV dose O Pending for genomic sequencing

Table 3: Urgent / ITD Pending Cases (2/2)

S. #	Basic information									OPV doses				Urgent		Prov Diagnosis	Lab update			Remarks	
	District	Prio rity	Tehsil	Union council	Epid number	Date of Onset	Age (M)	S e x	Date of 1st stool	Stool Adeq	RI	SIA s	Last 6 SIA s	Last dose	Field		NSC	Lab No.	Days Inoc		Culture update
18	MULTAN	2	#	#	PB/61/14/095	09-Nov-14	50	M	14-Nov-14	#	#	#	30-Sep-14	Y	N		5868	6	UP		
19	BADIN	4	MATLI	TANDO	SD/23/14/044	09-Nov-14	10	M	11-Nov-14	Y	3	2	2	30-Sep-14	N	Y	MONOPLÉGIA	5822	8	UP	

* New addition § New results #Data not available † NSC Criteria = Fever, Rapid Progress, Age < 48 months and OPV Doses <7 UP = Under process
Urgent (Field/NSC) / Inadequate specimens / Age 12-35 months / Zero OPV dose UPending for genomic sequencing

Environmental Surveillance Results, Pakistan (Last 52 weeks)

Sites	Proportion of Positive samples					2014																																																		
	2011		2012		2013		2014																																																	
	%	%	%	%	%	n	Dec	Jan	Feb	Mar	Apr	May	Jun	Jul	Aug	Sep	Oct	Nov																																						
PUNJAB	61	33	9	22	27																																																			
LAHORE	53	50	7	36	18																																																			
Gulshan Ravi Station	42	42	8	20	2																																																			
Multan Road Station	58	50	8	10	1																																																			
Outfall Pump Station F	58	58	0	50	5																																																			
Outfall Pump Station G			8	50	5																																																			
Outfall Pump Station H			8	50	5																																																			
MULTAN	58	11	6	7	2																																																			
Ali Town	50	17	8	10	1																																																			
Kotla A. Fateh	50	8	0	10	1																																																			
Suraj Miani	75	8	8	0	0																																																			
FAISALABAD	3	2	0	0	0																																																			
Pump Station 03	8	6	0	0	0																																																			
Pump Station 27	0	0	0	0	0																																																			
Ismail City Road	0	0	0	0	0																																																			
RAWALPINDI	92	58	50	47	7																																																			
Dhok Dallal				44	4																																																			
Safdarabad	92	58	50	27	3																																																			
ISLAMABAD	Started from week 12 of 2014					0	0																																																	
CDA						0	0																																																	
Sabzi Mandi						0	0																																																	
SINDH	64	36	25	48	48																																																			
KHI (BALDIA)	46	4	13	50	10																																																			
Kumhar Wara	58	8	0	40	4																																																			
Sajjan Goth	33	0	25	60	6																																																			
KHI (G.IQBAL)	58	17	21	60	12																																																			
Chakora Nulla	50	25	0	50	5																																																			
Rashid Minhas Rd	67	8	42	70	7																																																			
KHI (GADAAP)	88	67	41	52	15																																																			
Khamiso Goth	92	50	8	30	3																																																			
Macchar Colony			70	56	5																																																			
Sorab Goth	83	83	50	70	7																																																			
HYDERABAD	100	58	60	6	6																																																			
Tulsidas P. Station	100	58	60	6	6																																																			
JACOBABAD			40	2	2																																																			
Saddar Pumping Station			40	2	2																																																			
SUKKUR	41	0	15	3	3																																																			
Makka P.Station	38	0	20	2	2																																																			
Miani P.Station	44	0	10	1	1																																																			
KP	79	83	88	54	14																																																			
PESHAWAR	79	83	88	54	14																																																			
Lara Ma	67	75	75	42	5																																																			
Shaheen Town	92	92	100	64	9																																																			
BALUCHISTAN	83	14	6	44	14																																																			
QUETTA				38	11																																																			
Jam-e-Salfia	75	17	0	10	1																																																			
Killi Jattak	92	17	9	44	4																																																			
Surpul		0	8	60	6																																																			
KABDULAH				100	3																																																			
Army Kaziba				100	2																																																			
Hadi Packet				100	1																																																			
PAKISTAN	67	37	20	35	103																																																			

■ Negative
 ■ Positive
 cVDPV2
 cVDPV2+WPV
 ■ Under process

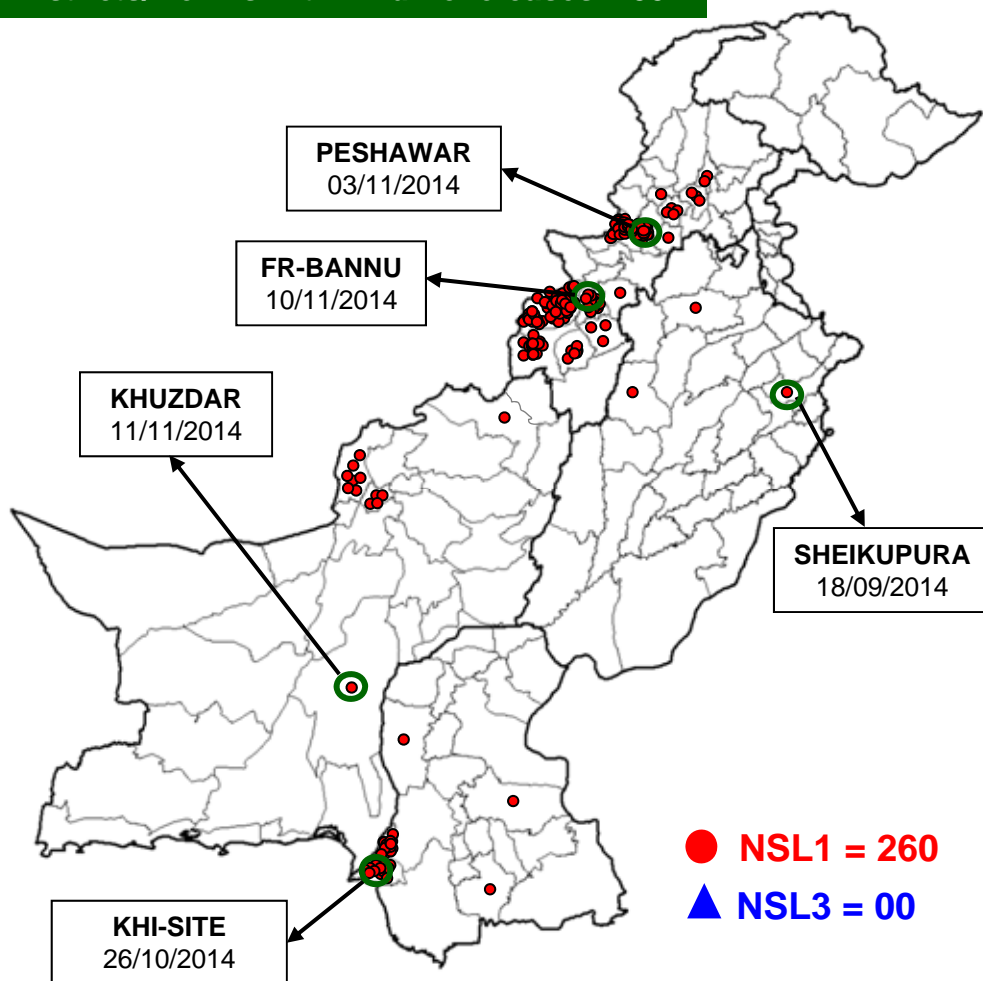
* Data as of 06th November, 2014

Comparison of environmental sampling results, 2013-14

DISTRICT	2013			2014			Last
	TOTAL	WILD		TOTAL	WILD		
	n	n	%	n	n	%	
LAHORE	50	0	0%	54	18	33%	15-Oct-14
MULTAN	30	2	7%	32	2	6%	29-Sep-14
RAWALPINDI	10	4	40%	18	7	39%	10-Nov-14
FAISALABAD	30	1	3%	32	0	0%	03-Jan-13
KHIGIQBAL	21	3	14%	21	12	57%	05-Aug-14
KHIGADAP	28	11	39%	31	15	48%	21-Oct-14
KHIBALDIA	20	1	5%	21	10	48%	22-Oct-14
SUKKUR	20	0	0%	22	3	14%	10-Jul-14
HYDERABAD	10	7	70%	11	6	55%	03-Sep-14
JACOBABAD	0	0	-	6	2	33%	14-Oct-14
PESHAWAR	20	17	85%	26	14	54%	10-Nov-14
QUETTA	29	1	3%	31	11	35%	20-Oct-14
KABDULAH	0	0	-	4	3	75%	01-Nov-14
ISLAMABAD	0	0	-	9	0	0%	-
PAKISTAN	268	47	18%	318	103	35%	10-Nov-14

Map1: Distribution of Wild Polio cases Pakistan 2014*

Districts/ Towns with Wild Polio cases = 33



Province/ Country	Date of Last Case		Number of cases 2014	
	P1	P3	P1	P3
FATA	Nov, 2014	Apr, 2012	163	-
BALUCHISTAN	Nov, 2014	Apr, 2010	14	-
KHYBER- PAKHTUNKHWA	Nov, 2014	Oct, 2010	54	-
SINDH	Oct, 2014	Jan, 2010	26	-
PUNJAB	Sep, 2014	Jun, 2010	3	-
AJK	June, 2000	Jun, 2000	-	-
GILGIT-BALTISTAN	Aug, 2012	-	-	-
ISLAMABAD	Sep, 2008	Sep, 2008	-	-
PAKISTAN	Nov, 2014	Apr, 2012	260	-

● NSL1 = 260

▲ NSL3 = 00

○ District with last polio case in province

Cases randomly placed
in districts

— Provincial Boundary
— Districts Boundary

* Afp.rec Data as of 20-11-2014

WPV and Sabin2 cases by district in 2014

PROVINCE	DISTRICT	WPV Cases		Sabin2 Cases	
		Onset of Last Case	Cases	Onset of Last Case	Cases
BALOCHISTAN	QUETTA	11-Nov	5		
	KABDULAH	3-Nov	7		
	KHUZDAR	23-Oct	1		
	ZHOB	29-Sep	1		
Total		11-Nov	14		
FATA	FR BANNU	10-Nov	7	27-May	8
	KHYBER	3-Nov	65	23-Jun	1
	WAZIR-S	1-Nov	21		
	WAZIR-N	16-Sep	70	12-Apr	7
Total		10-Nov	163	23-Jun	16
KPAKHTUNKHWA	PESHAWAR	3-Nov	22	1-Aug	1
	KARAK	2-Nov	1		
	CHARSADA	16-Oct	1		
	MARDAN	10-Oct	5		
	TANK	22-Sep	5		
	LAKKIMRWT	22-Sep	3	8-May	1
	BUNIR	13-Sep	3		
	TORGHAR	6-Sep	1		
	NOWSHERA	6-Sep	1		
BANNU	30-Jul	12	3-May	1	
Total		3-Nov	54	1-Aug	3
SINDH	KHISITE	26-Oct	2		
	KHIBINQASIM	22-Oct	2		
	BADIN	13-Oct	1		
	KHIKORANGI	1-Oct	2		
	DADU	26-Sep	1		
	KHIGADAP	20-Sep	10		
	KHILIAQAT	1-Sep	1		
	KHIORANGI	17-Aug	2		
	KHILANDHI	8-Jul	2		
	SANGHAR	24-Jun	1		
	KHINORTH	20-Jun	1		
KHIBALDIA	10-Feb	1			
Total		26-Oct	26		
PUNJAB	SHEIKUPURA	18-Sep	1		
	BHAKKAR	16-Aug	1		
	CHAKWAL	7-Jul	1		
Total		18-Sep	3		
PAKISTAN		11-Nov	260	1-Aug	19

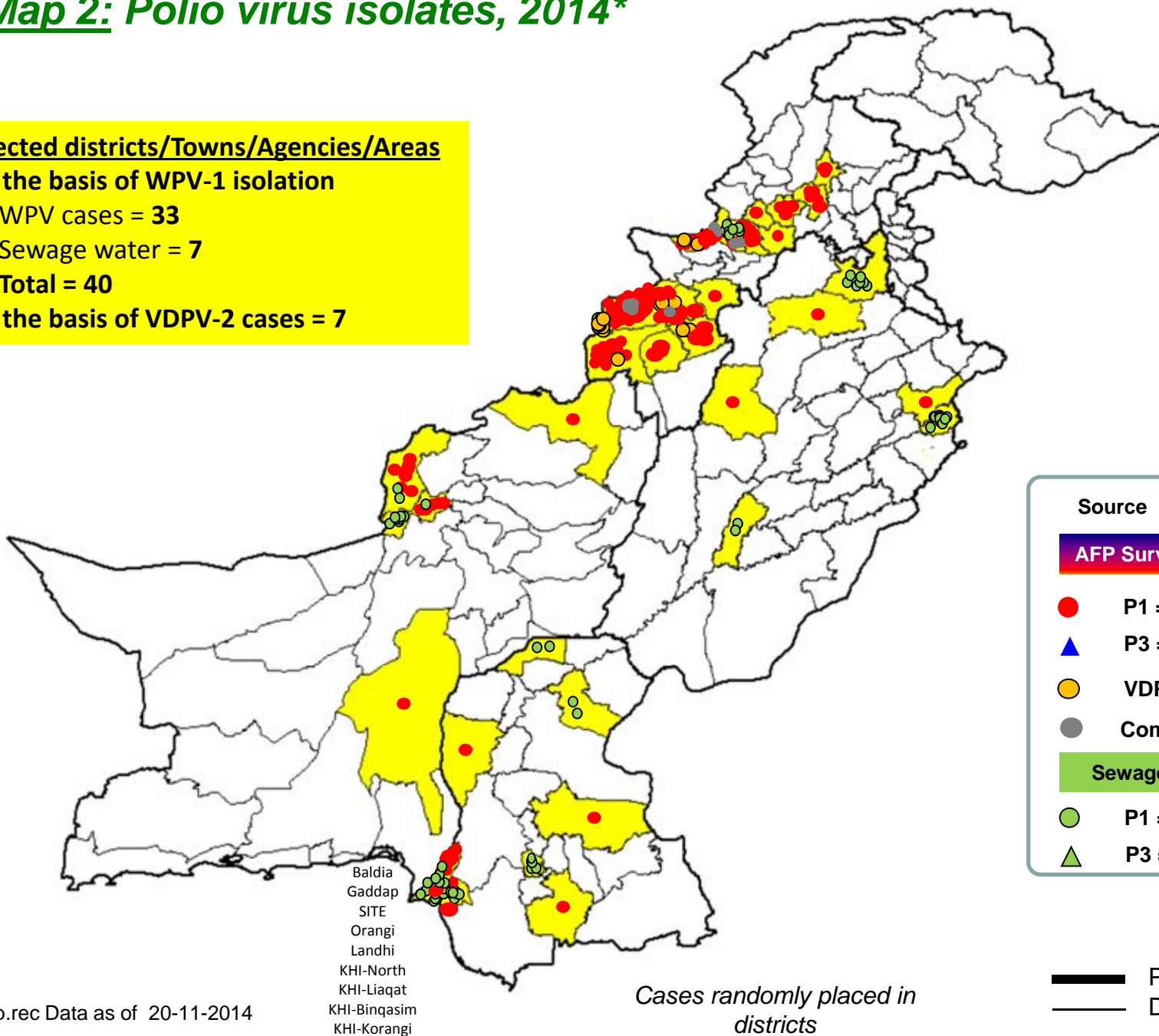
Map 2: Polio virus isolates, 2014*

Infected districts/Towns/Agencies/Areas

On the basis of WPV-1 isolation

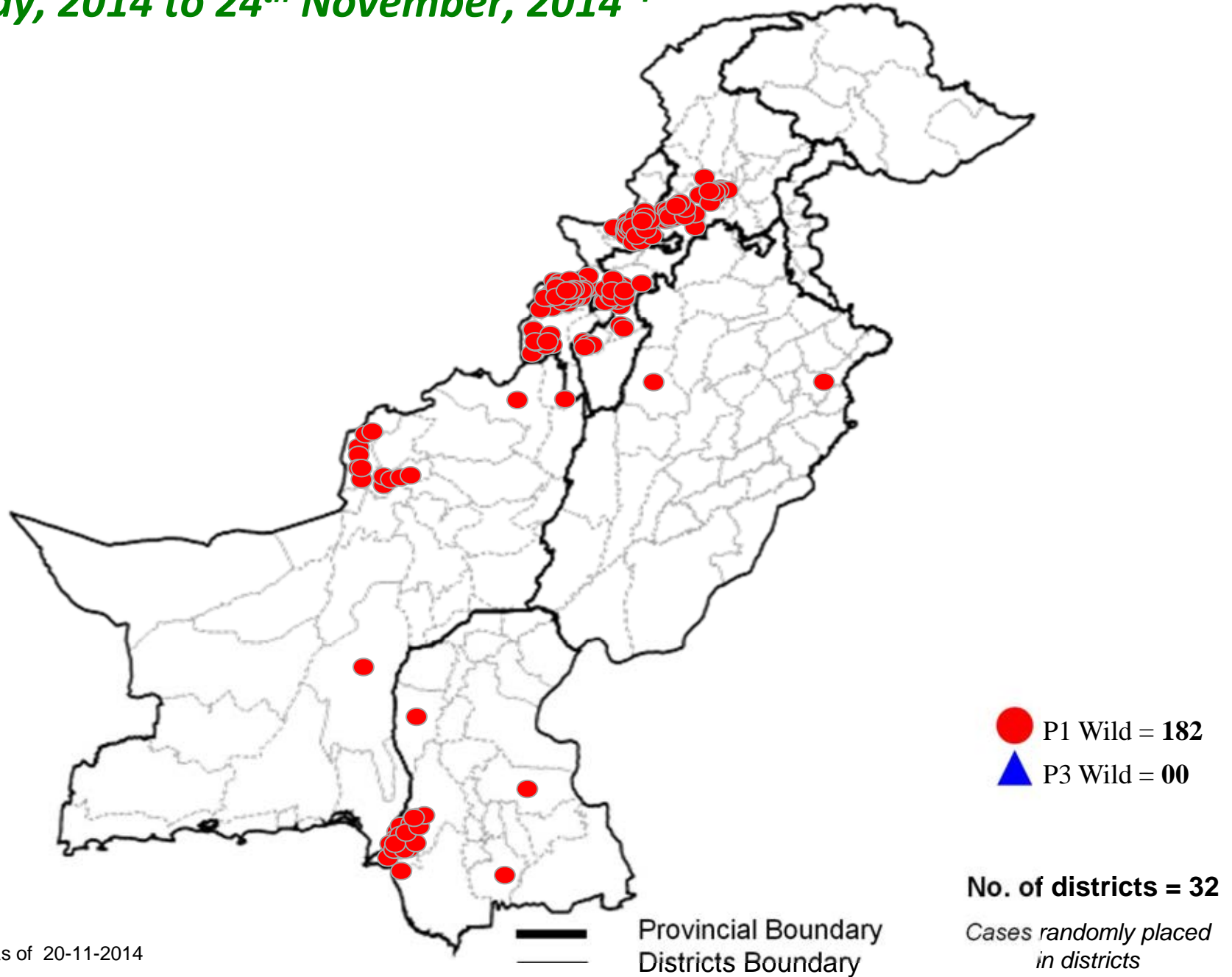
- WPV cases = 33
- Sewage water = 7
- Total = 40

On the basis of VDPV-2 cases = 7



* Afp.rec Data as of 20-11-2014

**Map 3: Wild Polio cases in the last 6 months;
25th May, 2014 to 24th November, 2014 ***



* Afp.rec Data as of 20-11-2014

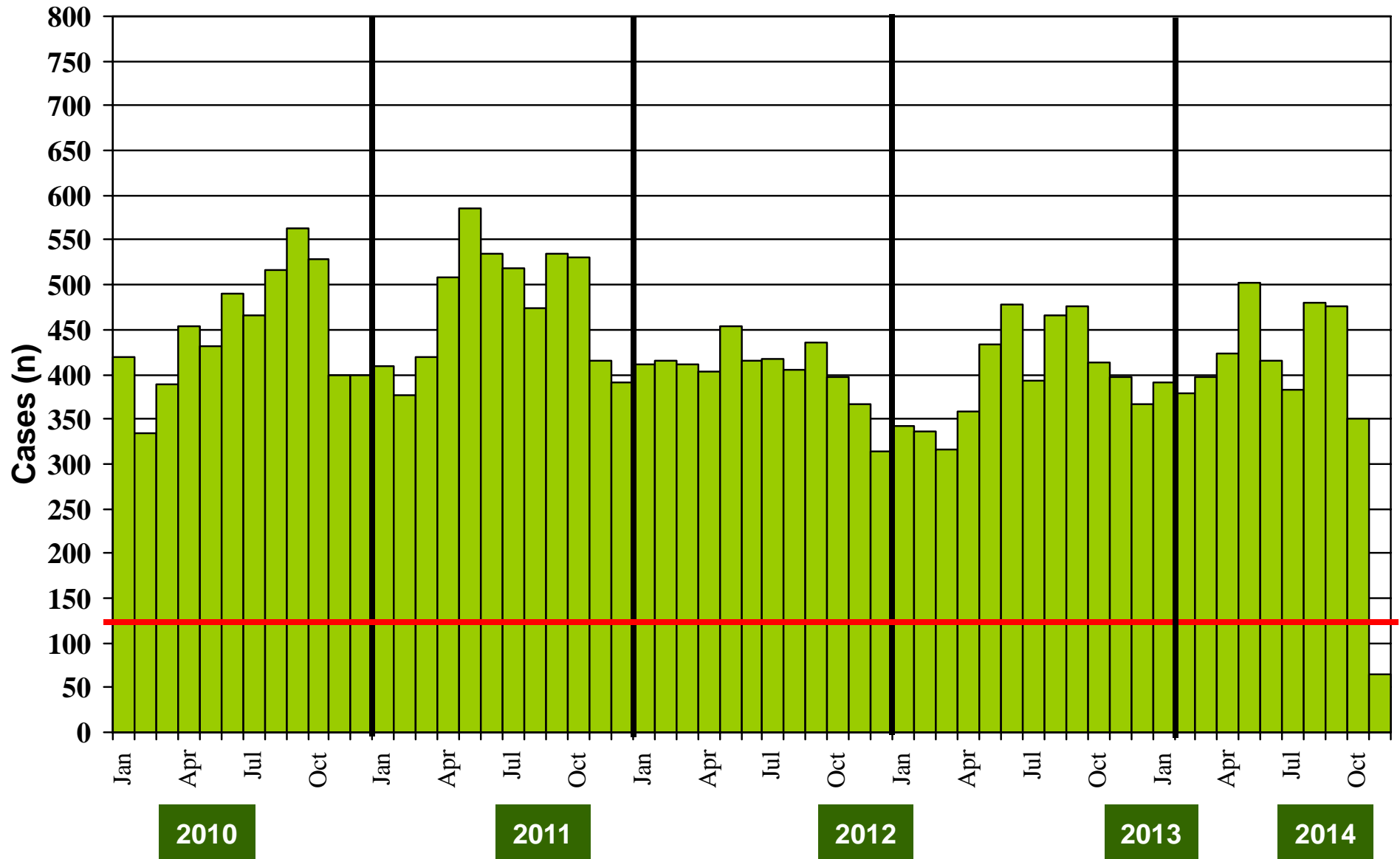
**Table 4: Distribution of AFP Cases By Week of Onset [^]
Pakistan 2014* [Week number / Ending on]**

PROVINCE	W 32 09 Aug 2014	W 33 16 Aug 2014	W 34 23 Aug 2014	W 35 30 Aug 2014	W 36 06 Sep 2014	W 37 13 Sep 2014	W 38 20 Sep 2014	W 39 27 Sep 2014	W 40 04 Oct 2014	W 41 11 Oct 2014	W 42 18 Oct 2014	W 43 25 Oct 2014	W 44 01 Nov 2014	W 45 08 Nov 2014	W 46 15 Nov 2014
PUNJAB	54	61	46	49	49	59	48	55	51	33	56	42	46	16	0
SINDH	13	20	24	14	25	22	22	32	25	16	18	24	17	16	7
FATA	16	15	18	19	14	12	20	10	8	11	6	5	11	3	1
BALUCHISTAN	3	5	6	3	3	8	4	6	6	5	5	5	1	4	4
AJK	0	1	2	3	2	0	0	2	0	0	1	0	0	3	0
GILGIT BILTISTAN	0	0	0	0	0	0	1	0	0	0	0	0	0	0	0
ISLAMABAD	0	0	0	0	0	1	0	2	1	0	0	3	1	0	0
KPAKHTUNKHWA	32	24	26	21	28	24	24	18	26	33	18	19	19	9	2
PAKISTAN	118	126	122	109	121	126	119	125	117	98	104	98	95	51	14

* Afp.rec & Afplab.rec: Data as of 20-11-2014

[^] MMWR Epidemiological Weeks

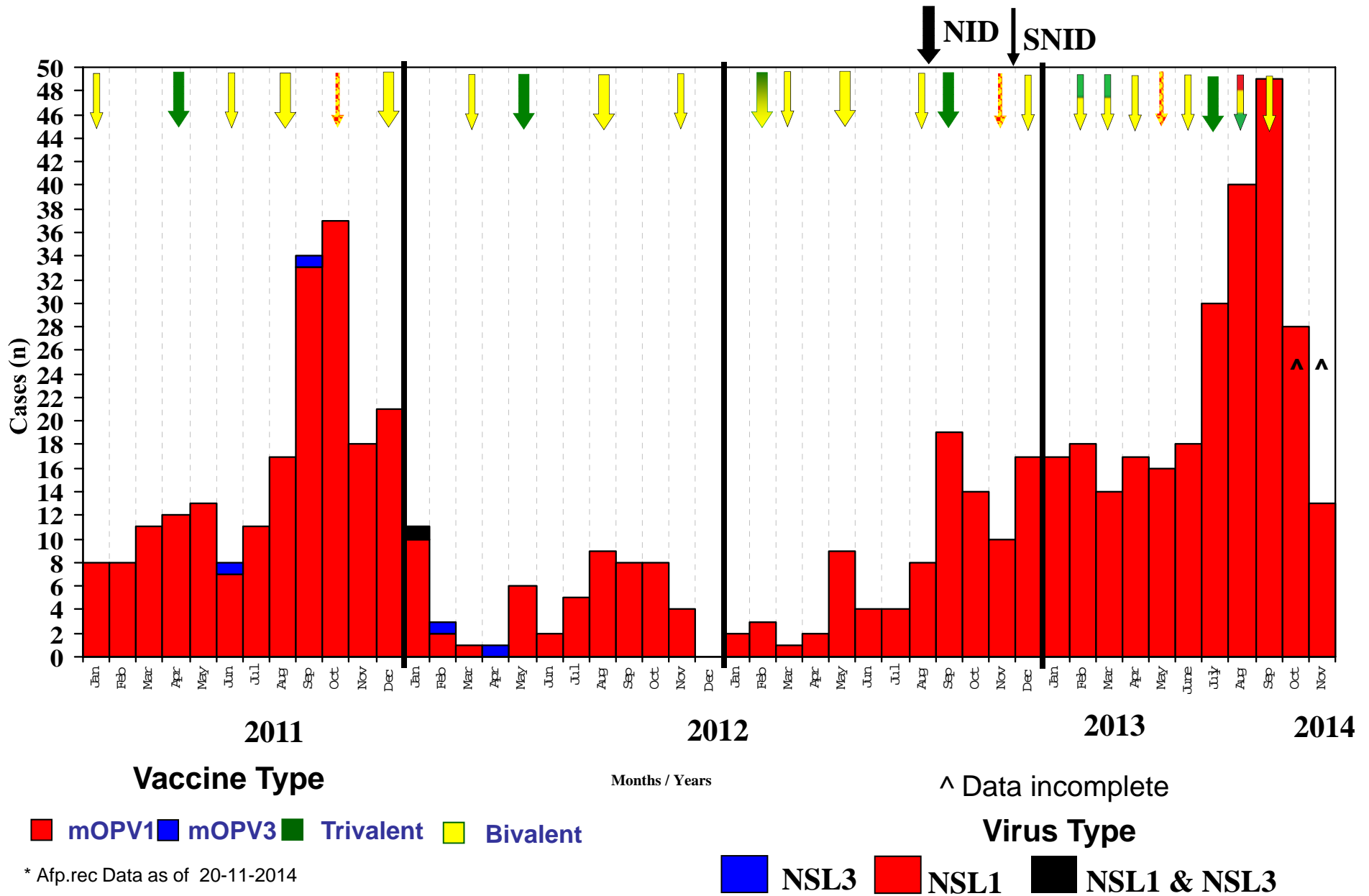
Graph 1: Distribution of AFP Cases by Month, Pakistan 2010-2014*



* Afp.rec Data as of 20-11-2014

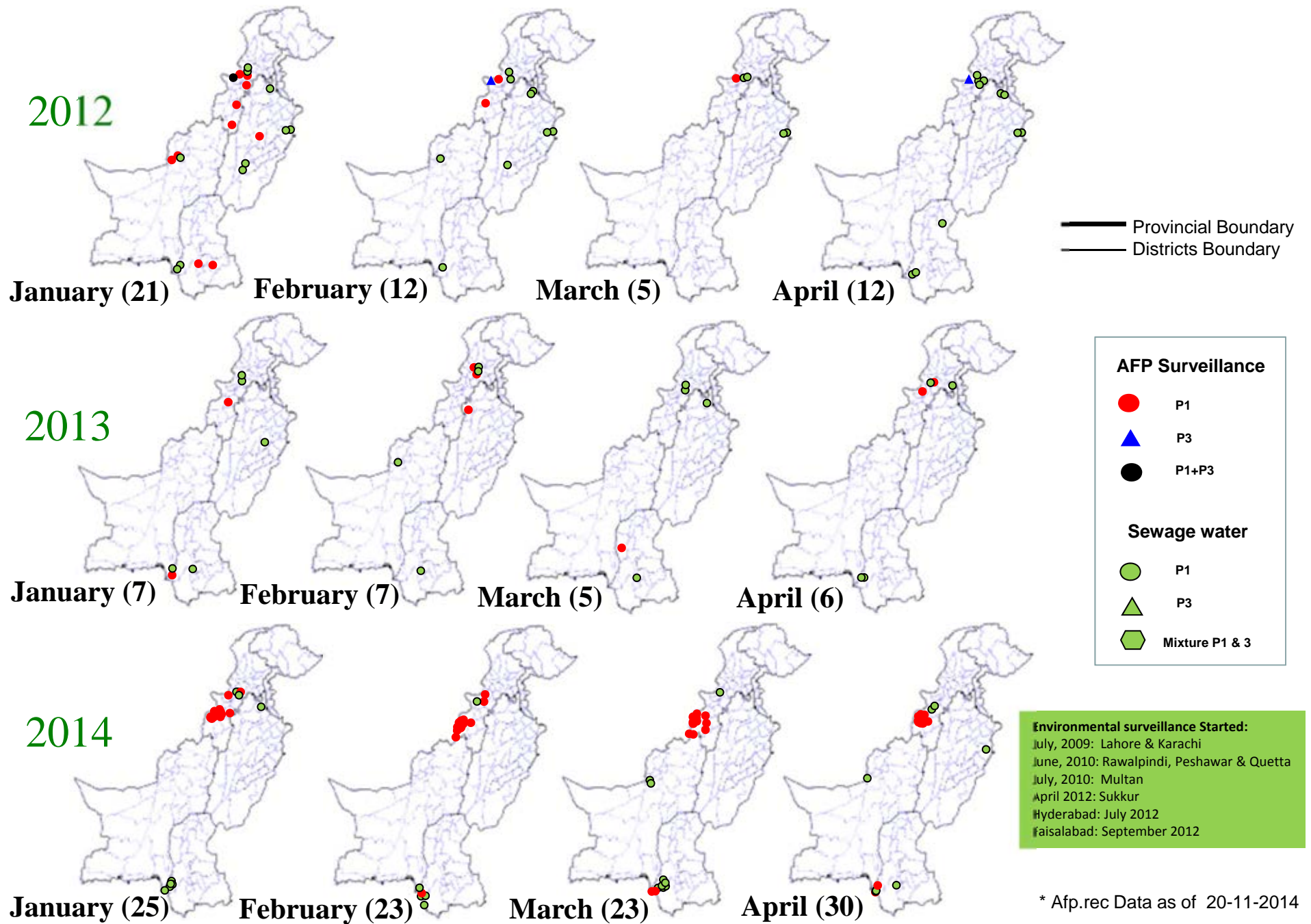
@ Non-polio AFP rate of 2/100,000 children < 15 years

Confirmed Polio Cases By Poliovirus Type, 2011-2014*

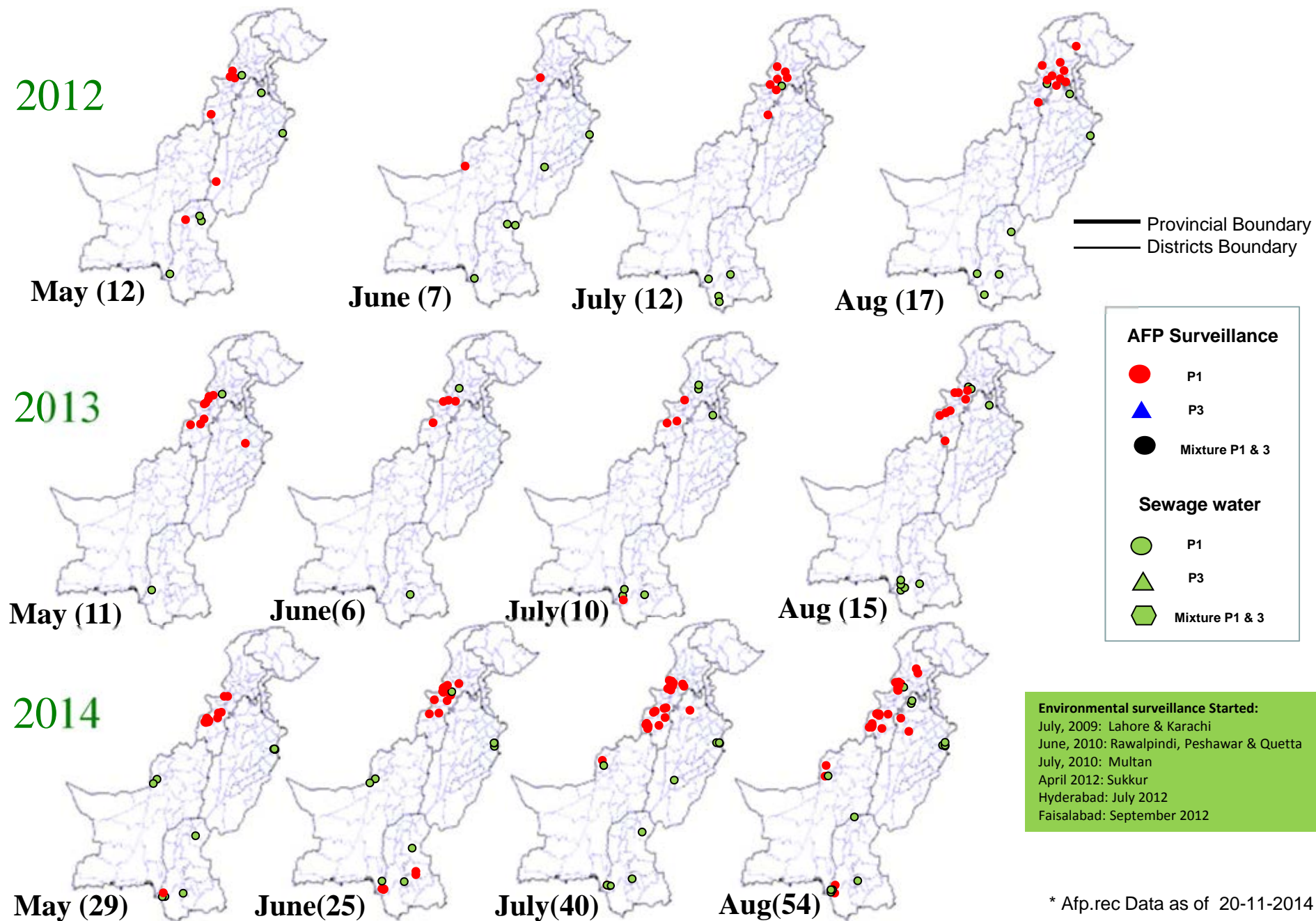


* Afp.rec Data as of 20-11-2014

Map 4: Monthly Comparison of P1 & P3 Polio Cases/Isolates 2012-2014*

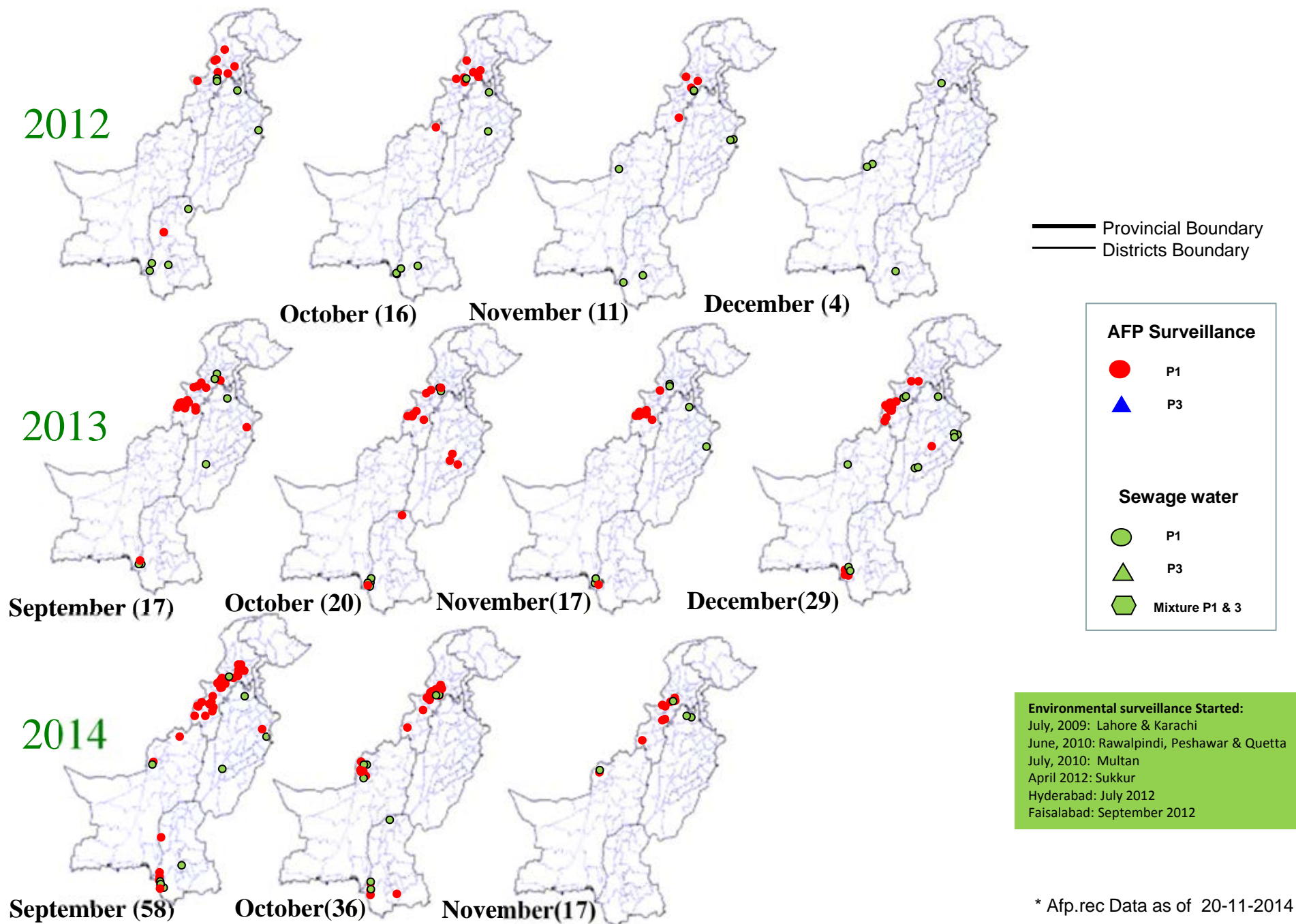


Map 4.1: Monthly Comparison of P1 & P3 Polio Cases/Isolates 2012-2014*



* Afp.rec Data as of 20-11-2014

Map 4.2: Monthly Comparison of P1 & P3 Polio Cases/Isolates 2012-2014*

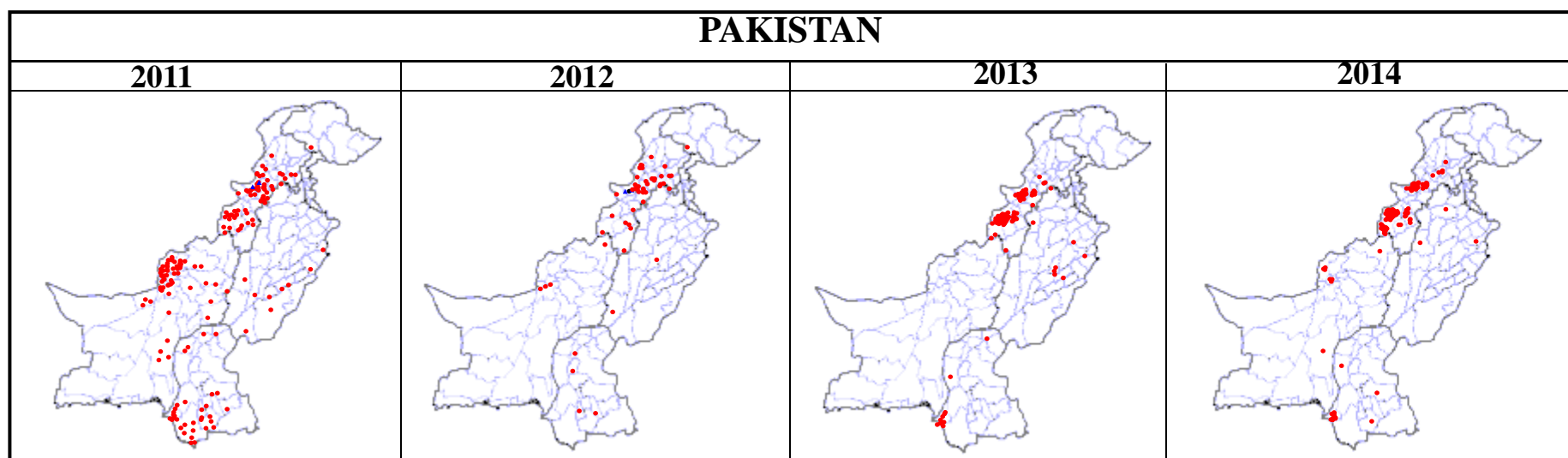


* Afp.rec Data as of 20-11-2014

Table 5: Polio Eradication Update, Pakistan 2011-2014*

Province/Region	Polio 1				Polio 3				Total Wild			
	2011	2012	2013	2014	2011	2012	2013	2014	2011	2012	2013	2014
FATA^	57	17	65	163	2	2	-	-	59	20^	65	163
KP	23	27	11	54	0	-	-	-	23	27	11	54
SINDH	33	4	10	26	0	-	-	-	33	4	10	26
PUNJAB	9	2	7	3	0	-	-	-	9	2	7	3
BALUCHISTAN	73	4	-	14	0	-	-	-	73	4	-	14
AJK	0	-	-	-	0	-	-	-	0	-	-	-
Gilgit-Baltistan	1	1	-	-	0	-	-	-	1	1	-	-
ISLAMABAD	0	-	-	-	0	-	-	-	0	-	-	-
PAKISTAN	196	55	93	260	2	2	-	-	198	58	93	260

^ FATA reported mixture of NSL1 & NSL3



* Afp.rec Data as of 20-11-2014

Table 6: Vaccination status of non polio AFP cases age 6-59 months 2011-2014*

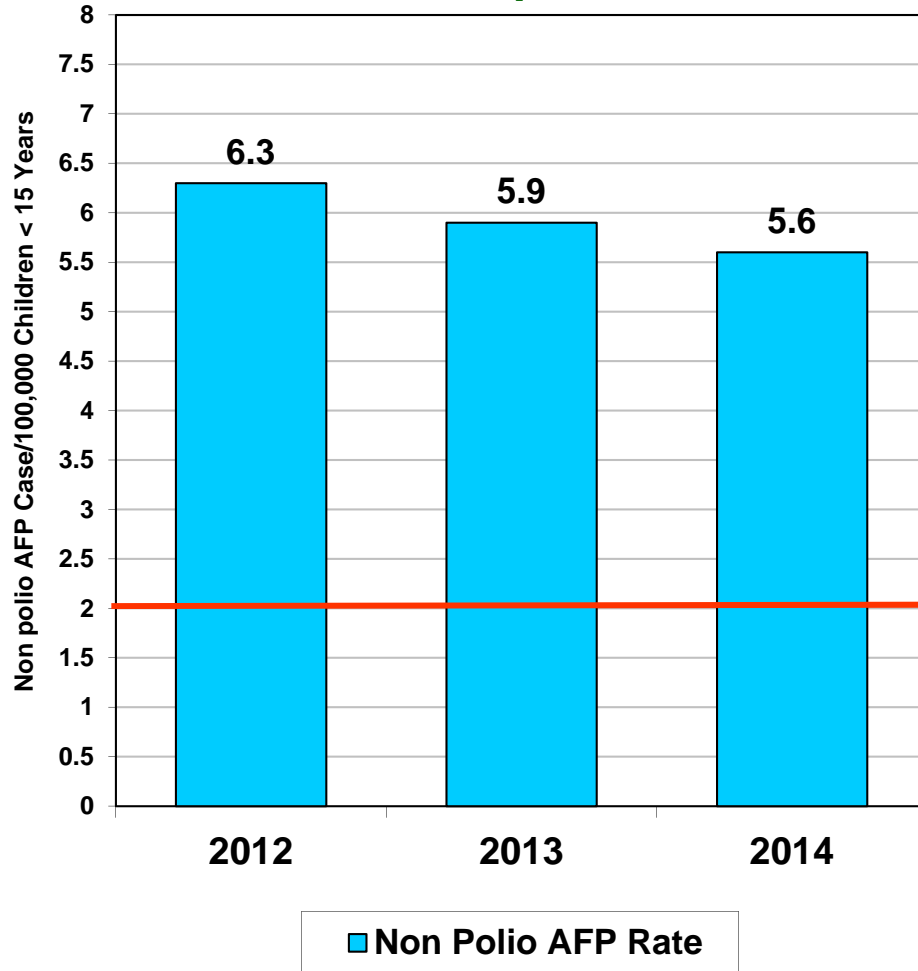
REGION	0 dose				1-2 doses				3 doses				4-6 doses				7+ doses			
	11	12	13	14	11	12	13	14	11	12	13	14	11	12	13	14	11	12	13	14
Central Punjab	0%	0%	0%	0%	1%	0%	0%	0%	2%	0%	1%	2%	6%	4%	7%	4%	92%	95%	91%	94%
North Punjab	0%	0%	0%	0%	1%	0%	1%	1%	1%	0%	0%	2%	5%	4%	4%	4%	93%	96%	96%	93%
South Punjab	0%	0%	0%	0%	0%	0%	0%	0%	1%	0%	0%	2%	5%	4%	5%	2%	93%	96%	94%	96%
PUNJAB	0%	0%	0%	0%	1%	0%	0%	0%	1%	0%	0%	2%	5%	4%	6%	3%	93%	96%	93%	94%
Karachi	4%	1%	1%	8%	1%	1%	5%	6%	0%	2%	0%	4%	6%	6%	6%	8%	86%	90%	88%	75%
North Sindh	0%	0%	0%	0%	1%	0%	0%	0%	0%	1%	0%	0%	5%	4%	5%	4%	94%	94%	95%	95%
South Sindh	1%	0%	0%	0%	1%	1%	0%	1%	0%	2%	1%	0%	6%	4%	7%	8%	96%	93%	91%	91%
SINDH	1%	0%	0%	1%	1%	1%	1%	2%	0%	1%	0%	1%	6%	4%	5%	7%	92%	93%	92%	90%
Central Khyber Pakhtunkhwa	1%	2%	2%	1%	1%	1%	1%	2%	0%	0%	1%	1%	3%	2%	2%	4%	95%	95%	95%	93%
North Khyber Pakhtunkhwa	1%	2%	1%	3%	2%	2%	1%	1%	1%	2%	1%	2%	7%	9%	7%	8%	90%	85%	91%	86%
South Khyber Pakhtunkhwa	2%	2%	1%	4%	4%	1%	0%	3%	4%	1%	1%	4%	7%	9%	4%	6%	83%	87%	95%	83%
Khyber Pakhtunkhwa	1%	2%	1%	2%	2%	1%	0%	2%	1%	1%	1%	2%	5%	6%	4%	6%	91%	89%	94%	88%
FATA	14%	18%	39%	44%	10%	6%	6%	12%	5%	3%	6%	3%	11%	12%	6%	5%	61%	62%	43%	36%
Rest of Balochistan	7%	9%	5%	6%	2%	6%	3%	8%	5%	5%	5%	8%	10%	10%	25%	16%	76%	70%	60%	63%
North Balochistan	4%	12%	9%	0%	12%	10%	11%	0%	23%	3%	3%	0%	12%	17%	28%	0%	50%	57%	49%	100%
Quetta Block	31%	14%	8%	7%	10%	10%	8%	10%	3%	0%	0%	7%	14%	14%	9%	12%	43%	62%	64%	63%
BALUCHISTAN	16%	8%	6%	5%	6%	8%	6%	6%	6%	3%	4%	5%	12%	17%	20%	10%	60%	64%	64%	74%
PAKISTAN	2%	1%	3%	4%	1%	1%	1%	2%	1%	1%	1%	2%	6%	5%	6%	5%	89%	92%	89%	87%

* Afp.rec Data as of 20-11-2014

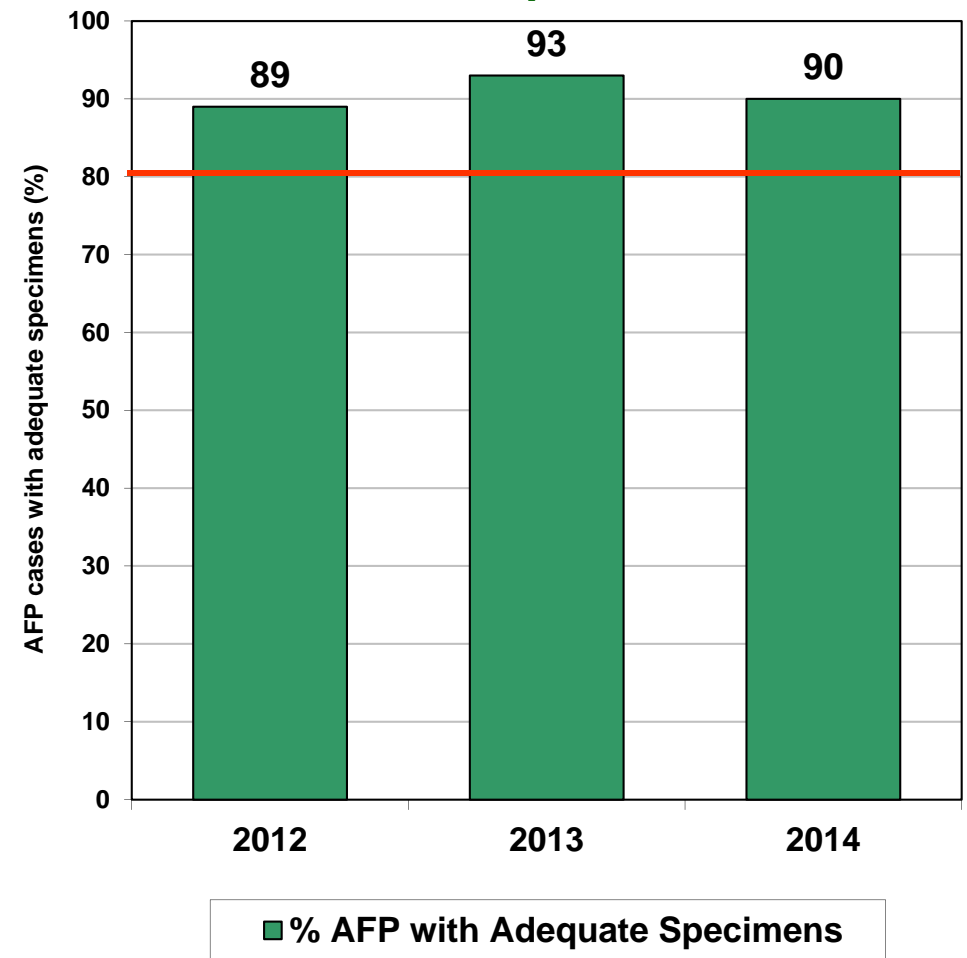
Key Surveillance Indicators; 2012-2014*

(Non polio AFP rate and % AFP cases with adequate specimens)

Graph 3



Graph 4

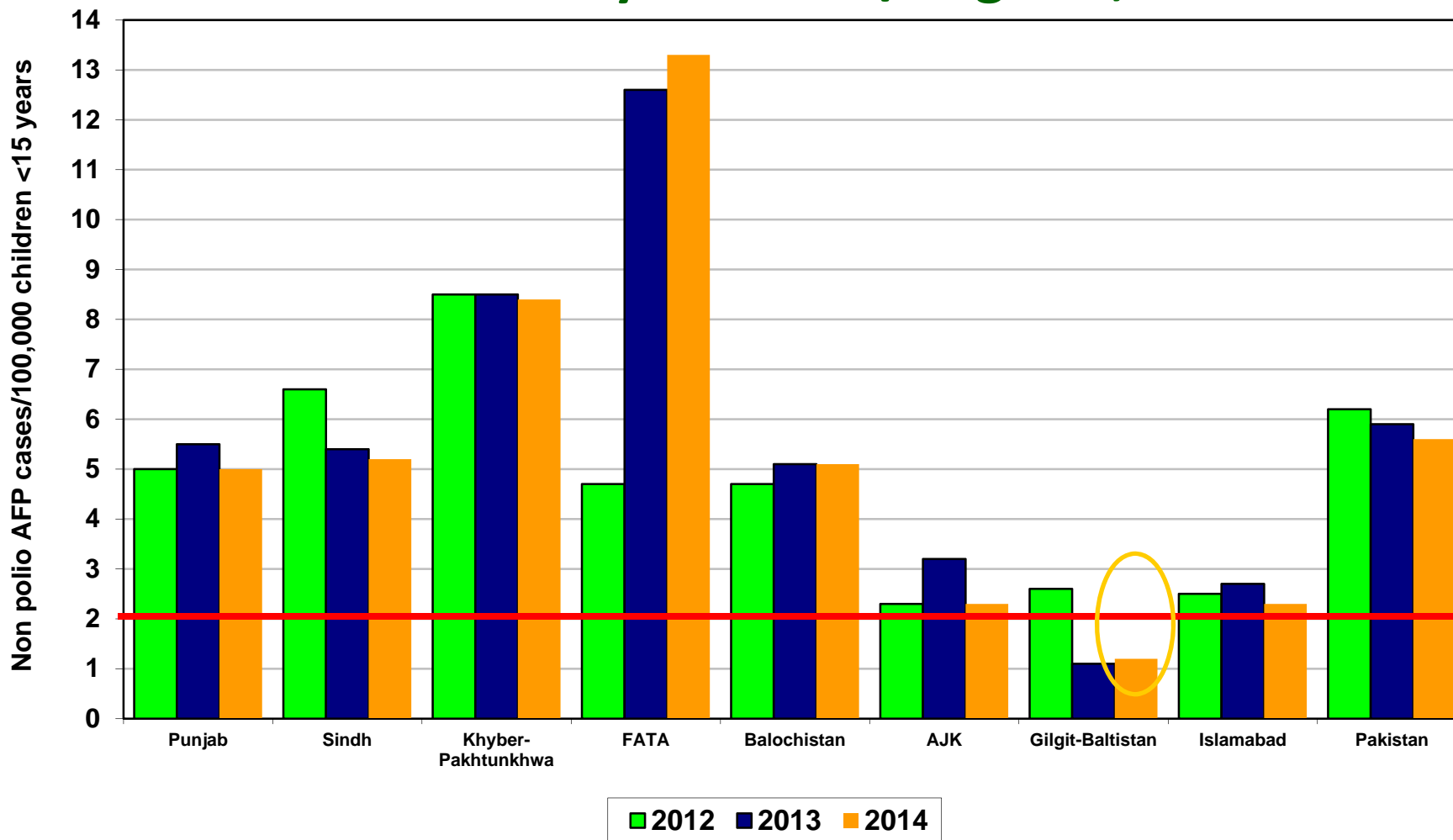


Non Polio AFP rate Up to Week No. 46 ended on 15th Nov, 2014

Target

* Afp.rec Data as of 20-11-2014

Non Polio AFP Rate By Province/Regions, 2012-2014*

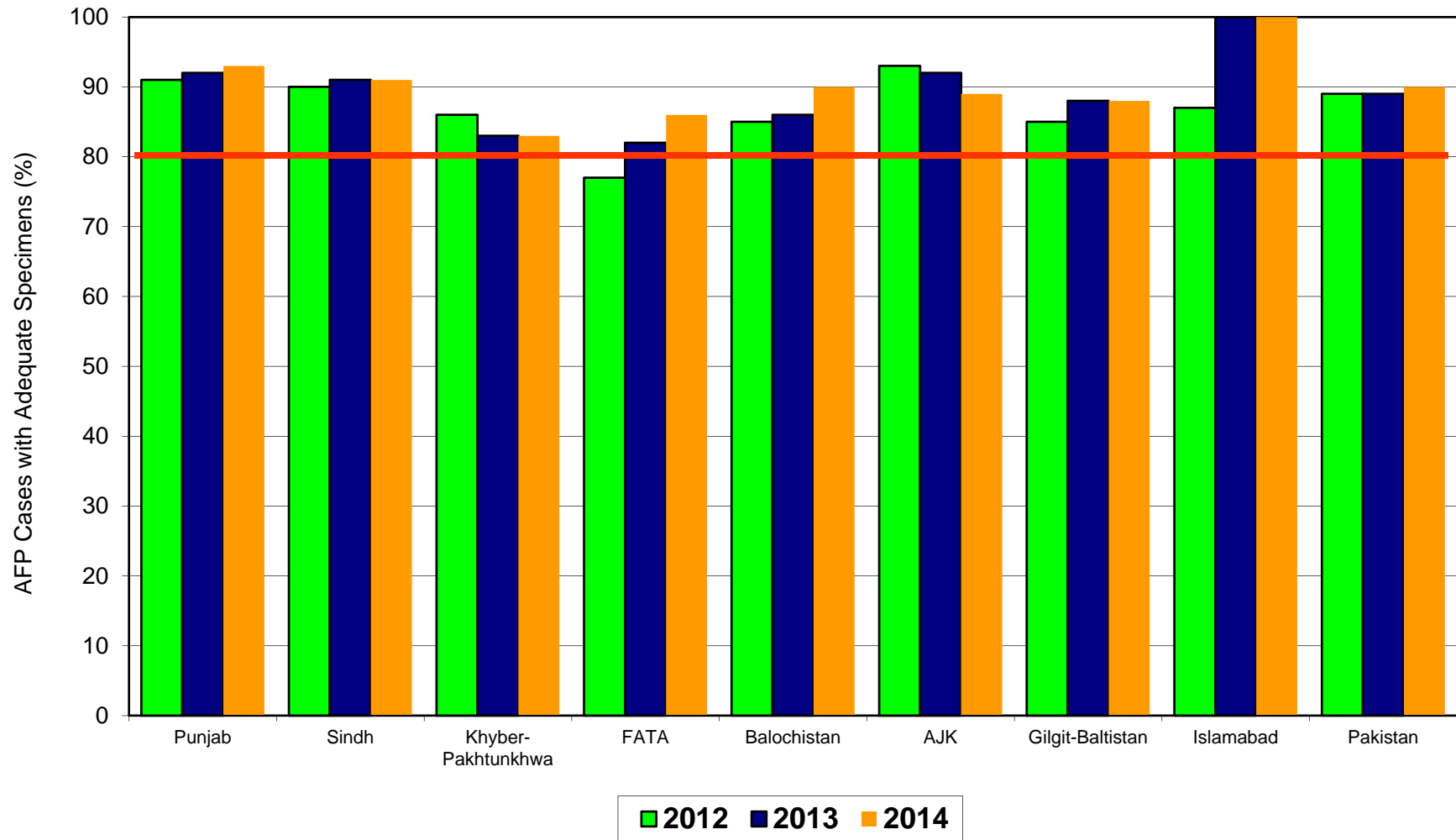


Non Polio AFP rate Up to Week No. 46 ended on 15th Nov, 2014

Target Non-Polio AFP Rate 2/ 100000 < 15 years of the age

* Afp.rec Data as of 20-11-2014

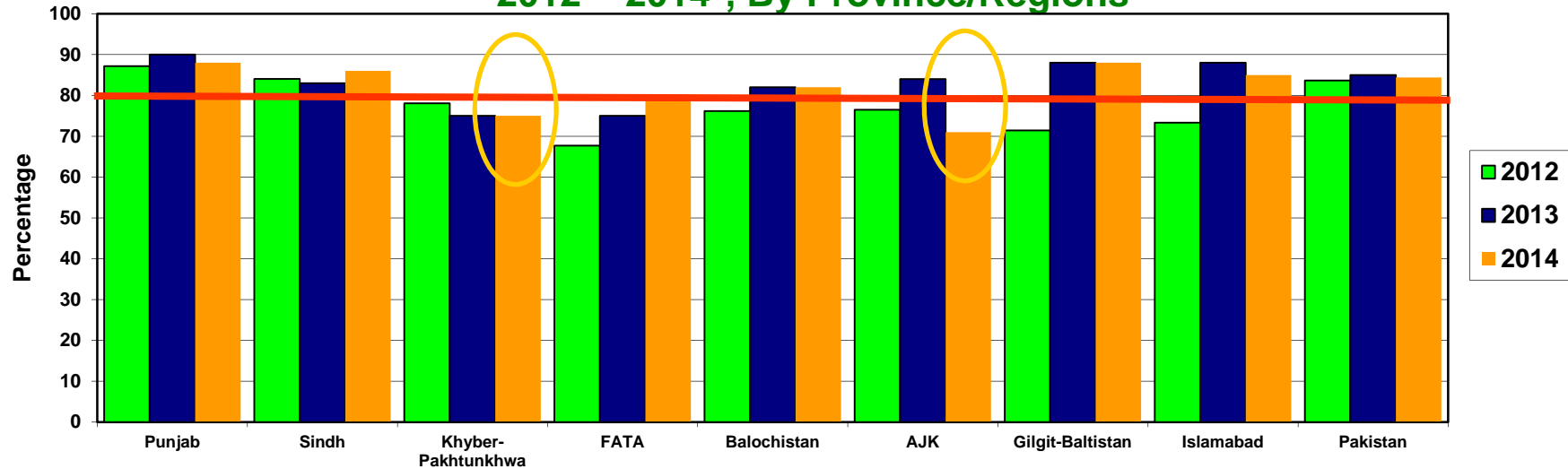
Percent AFP Cases with Adequate Specimens By Province/Regions, 2012-2014*



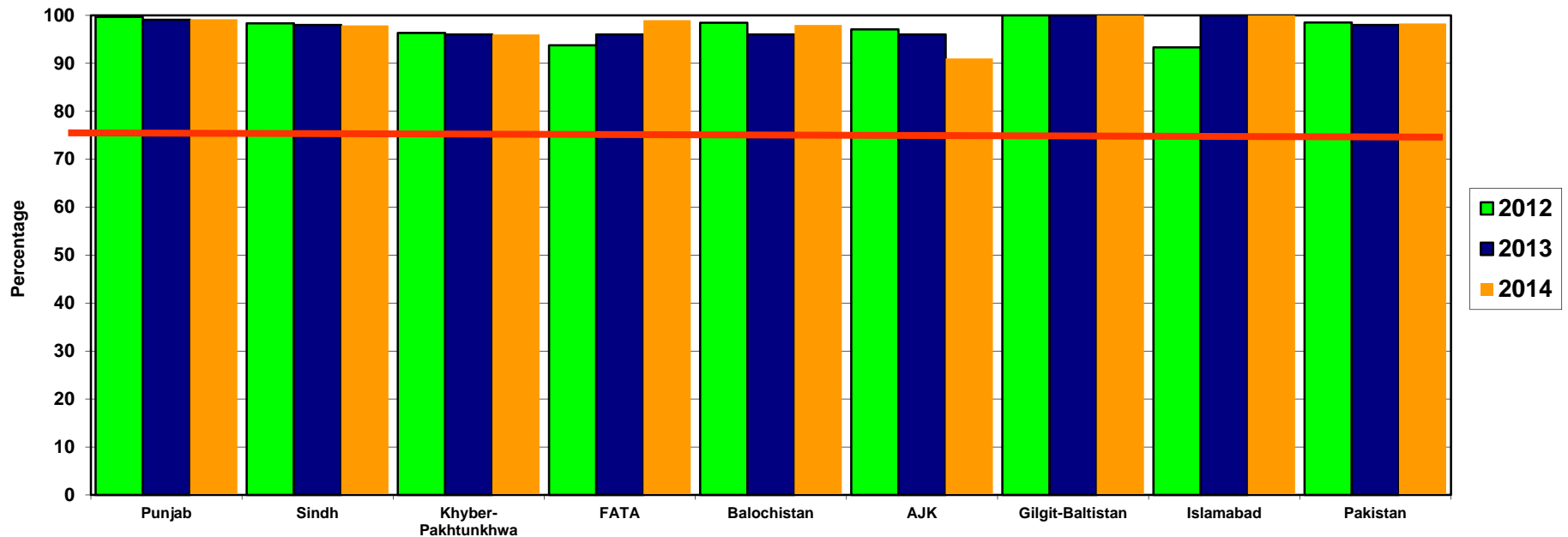
* Afp.rec Data as of 20-11-2014

Target Adequate Sample cases = 80%

Graph 5: Percent AFP Cases Notified within 07 days of paralysis onset 2012 ~ 2014*, By Province/Regions



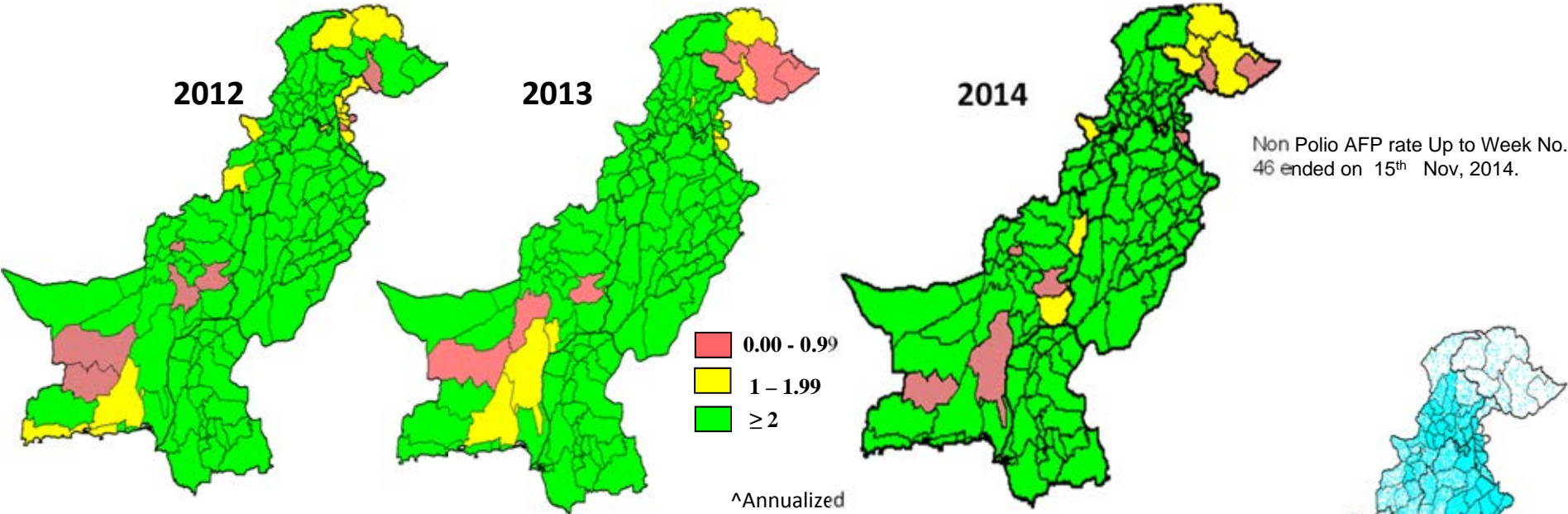
Graph 6: Percent AFP Cases Investigated within 48 hours of notification 2012 ~ 2014*, By Province/Regions



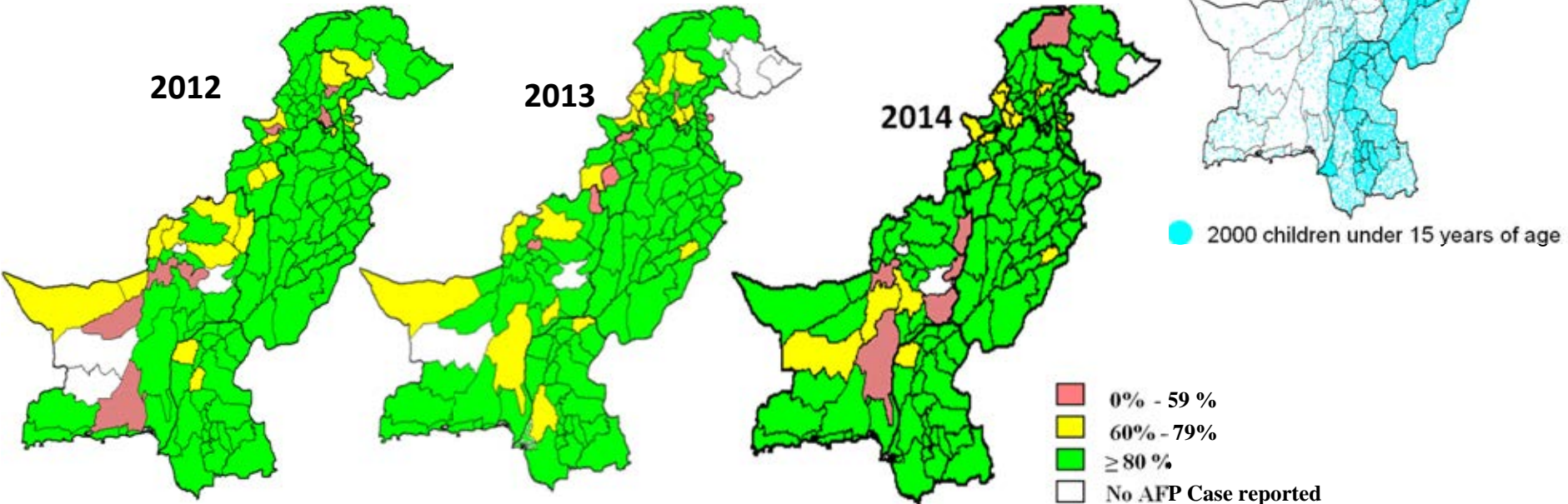
* Afp.rec Data as of 20-11-2014

— Target

Non-Polio^ AFP Rate by District



Percent AFP Cases with Adequate Specimens, by District



* Afp.rec Data as of 20-11-2014

Table 7.1: AFP CASES PENDING FOR CLASSIFICATION WITH DATE OF ONSET MORE THAN 90 DAYS* 2014 (1/3)

S. No	DISTRICT	TEHSIL	EPID	SEX	AGE	DONSET	DOSE€	DSTOOL1	DSTOOL2	LAB	FEVER	ASVM	PROG	FUP	PEND (DAYS)
1	BAHWLNAGAR	CHISHTIAN	PB/73/14/033	M	108	13-05-14	7+	02-06-14	03-06-14	NVI	N	N	Y		191
2	DGKHAN	DGKHAN	PB/81/14/085	M	12	05-07-14	7+	26-07-14	27-07-14	NVI	Y	Y	Y	Y	138
3	DGKHAN	DGKHAN	PB/81/14/097	M	12	08-07-14	7+	LATE NOTIFIED			Y	Y	Y	Y	135
4	FAISALABAD	FAISALABAD CITY	PB/51/14/050	M	168	27-05-14	7+	17-06-14	19-06-14	NVI	Y	Y	Y		177
5	FAISALABAD	JARANWALA	PB/51/14/060	M	24	23-06-14	7+	11-07-14	12-07-14	EV	N	N	UK		150
6	FAISALABAD	FAISALABAD SADAR	PB/51/14/069	M	60	28-07-14	7+	CHILD DIED B/F STOOL COLLECTION			Y	N	Y	DIED	115
7	FAISALABAD	CHAK JHUMRA	PB/51/14/085	F	18	06-07-14	7+	31-08-14	01-09-14	EV	N	Y	Y	Y	137
8	FAISALABAD	TANDLIAN WALA	PB/51/14/077	M	24	22-07-14	7+	18-08-14	20-08-14	NVI	N	N	Y		121
9	FAISALABAD	JARANWALA	PB/51/14/078	M	102	20-07-14	7+	17-08-14	19-08-14	NVI	Y	N	Y		123
10	FAISALABAD	FAISALABAD CITY	PB/51/14/086	M	12	16-08-14	7+	06-09-14	07-09-14	EV	N	Y	Y		96
11	GUJRAT	GUJRAT	PB/23/14/026	F	102	18-06-14	3	20-06-14		NVI	N	N	Y		155
12	JHANG	JHANG	PB/53/14/024	M	30	21-05-14	7+	23-06-14	24-06-14	VACC	Y	N	Y		183
13	JHELMUM	JHELMUM	PB/14/14/017	M	24	21-06-14	7+	07-07-14	08-07-14	NVI	N	N	UK	Y	152
14	LAHORE	SHALAMAR TOWN	PB/31/14/116	M	21	01-08-14	7+	02-09-14	04-09-14	EV	Y	Y	N		111
15	LAHORE	RAVI TOWN	PB/31/14/120	F	48	25-07-14	7+	11-09-14	13-09-14	NVI	Y	Y	Y		118
16	LAHORE	DATI GUNJ BUKSH TOWN	PB/31/14/111	F	20	08-07-14	3	26-08-14	27-08-14	NVI	N	Y	Y		135
17	MBDIN	PHALIA	PB/24/14/015	F	60	02-07-14	7+	23-07-14	24-07-14	NVI	N	N	Y		141
18	MULTAN	SHUJABAD	PB/61/14/063	M	71	12-07-14	7+	26-07-14	28-07-14	EV	N	N	Y	Y	131
19	MUZFARGARH	MUZFARGARH	PB/83/14/024	M	54	19-04-14	7+	26-04-14		EV	Y	N	Y		215
20	OKARA	RENALA KHURD	PB/34/14/043	F	36	25-07-14	7+	28-07-14		NVI	Y	N	Y	Y	118
21	PAKPATTEN	ARIF WALA	PB/66/14/021	F	24	05-08-14	7+	23-08-14	25-08-14	EV	N	N	Y		107
22	RAJANPUR	JAMPUR	PB/82/14/057	F	9	06-06-14	5	08-07-14	09-07-14	VACC	Y	Y	Y	Y	167
23	RAJANPUR	JAMPUR	PB/82/14/067	M	60	06-08-14	3	23-08-14	24-08-14	NVI	N	Y	Y	Y	106
24	SARGODHA	BHALWAL	PB/41/14/055	F	61	06-08-14	7+	21-09-14	22-09-14	EV	Y	N	N		106
25	SHEIKUPURA	SHEIKHUPURA	PB/33/14/043	M	144	05-08-14	7+	23-08-14	24-08-14	NVI	Y	N	Y		107
26	TTSINGH	PIR MAHAL	PB/52/14/032	F	18	02-07-14	7+	19-07-14	21-07-14	NVI	Y	N	Y		141
27	TTSINGH	KAMALIA	PB/52/14/037	F	11	13-08-14	7+	19-08-14		NVI	Y	N	Y	DIED	99
28	VEHARI	VEHARI	PB/63/14/036	M	30	07-08-14	3	LATE NOTIFIED			Y	N	Y	Y	105
29	VEHARI	VEHARI	PB/63/14/041	F	28	15-07-14	7+	LATE NOTIFIED			Y	N	Y	Y	128
30	DADU	MEHAR	SD/24/14/018	F	72	19-04-14	7+	07-05-14	08-05-14	NVI	Y	Y	N	Y	215
31	GHOTKI	GHOTKI	SD/42/14/018	F	120	13-05-14	7+	CHILD DIED B/F STOOL COLLECTION			Y	N	Y	DIED	191
32	HYDERABAD	QASIMABAD	SD/21/14/017	M	48	03-06-14	7+	24-07-14	25-07-14	VACC	N	N	Y	DIED	170
33	HYDERABAD	HYDERABAD RURAL	SD/21/14/018	F	96	20-05-14	7+	21-06-14	22-06-14	NVI	N	Y	Y	Y	184
34	JACOBABAD	JACOBABAD	SD/53/14/005	M	48	20-03-14	7+	04-04-14	06-04-14	NVI	Y	Y	Y	Y	245
35	JAMSHORO	MANJHAND	SD/25/14/011	F	6	10-04-14	5	29-04-14	01-05-14	NVI	Y	Y	Y	Y	224
36	KAMBAR	KAMBAR	SD/55/14/008	M	60	28-03-14	7+	26-05-14	27-05-14	NVI	Y	Y	Y	Y	237
37	KAMBAR	KAMBAR	SD/55/14/009	M	120	29-03-14	7+	02-04-14	27-05-14	NVI	Y	Y	Y	Y	236
38	KAMBAR	KAMBAR	SD/55/14/011	F	60	19-04-14	7+	22-04-14		NVI	Y	Y	Y	DIED	215
39	KAMBAR	MIRO KHAN	SD/55/14/013	F	108	12-04-14	7+	27-04-14	28-04-14	NVI	Y	Y	Y	Y	222
40	KAMBAR	WARAH	SD/55/14/014	M	99	19-05-14	7+				N	Y	Y		185
41	KAMBAR	MIRO KHAN	SD/55/14/017	F	72	24-06-14	7+	17-08-14	18-08-14	NVI	N	Y	Y	Y	149
42	KASHMORE	KANDHKOT	SD/54/14/006	M	60	21-03-14	7+	21-04-14	22-04-14	NVI	N	N	Y	Y	244

€ Based on recall of parents

* Afp.rec Data as of 20-11-2014

60 days Follow-up not done

FUP = Residual Weakness at 60 days follow up.

Table 7.1: AFP CASES PENDING FOR CLASSIFICATION WITH DATE OF ONSET MORE THAN 90 DAYS* 2014 (2/3)

S. No	DISTRICT	TEHSIL	EPID	SEX	AGE	DONSET	DOSE€	DSTOOL1	DSTOOL2	LAB	FEVER	ASVM	PROG	FUP	PEND (DAYS)
43	KHAIRPUR	KHAIRPUR	SD/43/14/003	F	72	28-01-14	7+	CHILD DIED B/F STOOL COLLECTION			Y	Y	Y	DIED	296
44	KHIBALDIA	BALDIA	SD/61/14/005	F	24	15-02-14	6	LATE NOTIFIED			Y	Y	Y	Y	278
45	KHIBALDIA	BALDIA	SD/61/14/007	F	12	01-08-14	4	08-09-14	09-09-14	VACC	Y	Y	Y	Y	111
46	KHIGADAP	GADAP	SD/63/14/004	M	10	05-01-14	0	05-03-14	06-03-14	EV	Y	Y	Y	Y	319
47	KHIGADAP	GADAP	SD/63/14/012	M	13	05-04-14	6	06-05-14	08-05-14	NVI	UK	UK	UK		229
48	KHIGADAP	GADAP	SD/63/14/014	M	10	28-04-14	7+	16-05-14	17-05-14	NVI	Y	Y	Y		206
49	KHIGADAP	GADAP	SD/63/14/026	M	18	18-07-14	7+	15-08-14	16-08-14	NVI	Y	Y	Y		125
50	KHIGADAP	GADAP	SD/63/14/029	M	28	13-08-14	2	04-09-14	05-09-14	NVI	Y	Y	Y		99
51	KHIGIQBAL	G-IQBAL	SD/65/14/006	M	17	01-03-14	7+	07-04-14	08-04-14	NVI	Y	Y	Y	Y	264
52	KHIJAMSHEED	JAMSHEED	SD/66/14/005	F	27	25-04-14	7+	06-05-14		NVI	Y	Y	Y	LOST	209
53	KHIKAMARI	KAMARI	SD/67/14/003	M	3	09-04-14	1	06-05-14	08-05-14	NVI	Y	Y	Y	Y	225
54	KHIKORANGI	KORANGI	SD/68/14/001	M	23	05-01-14	7+	CHILD DIED B/F STOOL COLLECTION			N	N	N	DIED	319
55	KHISITE	SITE	SD/78/14/007	M	16	22-06-14	3	09-07-14	10-07-14	EV	Y	Y	Y	Y	151
56	KHISITE	SITE	SD/78/14/008	M	8	10-05-14	2	12-07-14	13-07-14	EV	Y	Y	Y	Y	194
57	MIRPURKHAS	SINDHRI	SD/31/14/026	F	14	09-04-14	6	CHILD DIED B/F STOOL COLLECTION			Y	Y	Y	DIED	225
58	THATTA	JATI	SD/22/14/016	F	12	03-05-14	6				Y	Y	Y	Y	DIED
59	THATTA	MIRPUR BATHORO	SD/22/14/026	M	144	10-07-14	7+				Y	N	Y	DIED	133
60	TMKHAN	B.S.KARIM	SD/26/14/012	M	36	02-05-14	7+	03-06-14	04-06-14	EV	Y	N	Y	DIED	202
61	UMERKOT	SAMARO	SD/34/14/002	F	24	14-01-14	7+	CHILD DIED B/F STOOL COLLECTION			Y	N	Y	DIED	310
62	BANNU	BANNU	KP/61/14/020	M	12	19-04-14	7+	12-06-14	13-06-14		Y	N	Y		215
63	BATAGRAM	ALLAI	KP/11/14/009	M	132	11-07-14	7+	23-07-14	30-07-14	NVI	Y	Y	Y	Y	132
64	BATAGRAM	BATAGRAM	KP/11/14/010	M	72	01-08-14	7+	25-08-14	28-08-14	NVI	Y	Y	UK	Y	111
65	BATAGRAM	ALLAI	KP/11/14/013	M	84	08-08-14	7+	25-08-14	26-08-14		N	Y	Y		104
66	BUNIR	SOWARAI	KP/22/14/024	M	156	07-08-14	7+	17-08-14		VACC	N	N	Y	Y	105
67	BUNIR	DAGGAR	KP/22/14/028	M	21	28-07-14	7+	29-08-14	30-08-14	NVI	Y	Y	Y	Y	115
68	CHARSADA	CHARSADA	KP/31/14/026	M	46	14-06-14	7+	26-06-14		EV	Y	N	Y		159
69	CHARSADA	CHARSADA	KP/31/14/033	F	30	12-08-14	7+	17-09-14	18-09-14	EV	N	Y	Y		100
70	CHARSADA	SHABQADAR	KP/31/14/035	M	48	17-07-14	3	19-08-14	20-08-14	NVI	UK	UK	UK		126
71	CHARSADA	SHABQADAR	KP/31/14/036	M	5	04-08-14	7+	27-08-14	28-08-14		UK	UK	UK		108
72	CHARSADA	CHARSADA	KP/31/14/012	M	17	24-01-14	7+	08-03-14	10-03-14		Y	UK	UK		300
73	DIKHAN	DIKHAN	KP/60/14/013	F	151	30-05-14	7+	24-06-14	26-06-14	NVI	Y	N	Y	Y	174
74	DIKHAN	DIKHAN	KP/60/14/023	M	36	14-08-14	6	20-09-14	26-09-14	NVI	N	N	Y	DIED	98
75	DIRLOWER	SAMAR BAGH	KP/23/14/018	M	42	07-07-14	0				UK	UK	UK		136
76	HANGU	HANGU	KP/54/14/007	F	17	14-06-14	7+	16-07-14		NVI	Y	Y	Y	Y	159
77	HANGU	HANGU	KP/54/14/008	M	11	03-07-14	2	05-08-14		NVI	Y	Y	Y	Y	140
78	LAKKIMRWT	LAKKIMRWT	KP/62/14/018	F	4	28-04-14	4	11-06-14	12-06-14	NVI	N	Y	Y	Y	206
79	MARDAN	MARDAN	KP/40/14/085	M	23	11-08-14	7+	15-09-14	17-09-14	EV	Y	Y	Y		101
80	NOWSHERA	NOWSHERA	KP/32/14/024	F	36	19-06-14	1	CHILD DIED B/F STOOL COLLECTION			N	Y	Y	DIED	154
81	NOWSHERA	NOWSHERA	KP/32/14/029	M	25	08-08-14	7+	10-09-14	11-09-14	VACC	N	Y	Y	Y	104
82	PESHAWAR	PESHAWAR	KP/30/14/027	F	18	12-03-14	7+	01-04-14	02-04-14	VACC	Y	Y	Y	Y	253
83	PESHAWAR	PESHAWAR	KP/30/14/051	F	20	26-04-14	7+	16-05-14	18-05-14	NVI	N	N	Y	Y	208
84	PESHAWAR	PESHAWAR	KP/30/14/078	F	61	13-07-14	7+	05-08-14	07-08-14	EV	Y	UK	UK	Y	130

€ Based on recall of parents

* Afp.rec Data as of 20-11-2014

60 days Follow-up not done

FUP = Residual Weakness at 60 days follow up.

Table 7.1: AFP CASES PENDING FOR CLASSIFICATION WITH DATE OF ONSET MORE THAN 90 DAYS* 2014 (3/3)

S. No	DISTRICT	TEHSIL	EPID	SEX	AGE	DONSET	DOSE€	DSTOOL1	DSTOOL2	LAB	FEVER	ASVM	PROG	FUP	PEND (DAYS)
85	PESHAWAR	PESHAWAR	KP/30/14/077	M	144	31-07-14	7+				Y	N	Y		112
86	PESHAWAR	PESHAWAR	KP/30/14/090	M	70	04-08-14	7+	25-08-14	27-08-14		Y	Y	Y		108
87	PESHAWAR	PESHAWAR	KP/30/14/094	M	24	18-07-14	7+	14-09-14		EV	N	Y	Y		125
88	PESHAWAR	PESHAWAR	KP/30/14/123	M	28	20-08-14	7+	LATE NOTIFIED			Y	Y	Y	Y	92
89	SWABI	LAHORE	KP/41/14/033	F	26	16-08-14	7+	12-09-14	13-09-14	NVI	Y	Y	Y	Y	96
90	SWAT	SWAT	KP/24/14/018	F	20	07-07-14	7+	10-07-14		NVI	Y	N	Y	DIED	136
91	SWAT	SWAT	KP/24/14/027	M	24	25-05-14	7+	LATE NOTIFIED			Y	Y	Y	Y	179
92	SWAT	SWAT	KP/24/14/029	M	22	20-08-14	7+	LATE NOTIFIED			Y	Y	UK	Y	92
93	TANK	TANK	KP/63/14/002	M	18	05-02-14	7+	06-03-14	08-03-14	EV	Y	N	UK		288
94	TANK	TANK	KP/63/14/012	M	2	29-07-14	0	28-08-14	31-08-14		N	N	Y		114
95	TORGHAR	TORGHAR	KP/15/14/003	M	36	27-05-14	7+	14-06-14	15-06-14	NVI	Y	Y	Y	Y	177
96	TORGHAR	TORGHAR	KP/15/14/005	M	36	29-07-14	6	29-08-14	30-08-14	NVI	Y	Y	Y		114
97	JAFARABAD	SOHBAT PUR	BN/43/14/011	F	58	05-04-14	7+	14-05-14	16-05-14	VACC	N	Y	Y	Y	229
98	KABDULAH	KABDULAH	BN/14/14/020	M	9	24-07-14	7+	02-09-14	03-09-14	NVI	Y	Y	Y	Y	119
99	KHUZDAR	WADH	BN/54/14/001	M	4	29-07-14	0	12-08-14	13-08-14	NVI	Y	Y	Y	Y	114
100	BHIMBER	BARNALA	AJ/60/14/005	M	72	20-08-14	7+	19-09-14	22-09-14	NVI	Y	N	Y	DIED	92
101	HAVELI	HAVELI	AJ/51/14/002	F	120	16-02-14	3	17-04-14	19-04-14	NVI	Y	N	Y	Y	277
102	BAJOUR	KHAR	FT/33/14/016	M	8	09-07-14	7+	15-08-14	16-08-14	NVI	Y	Y	Y	LOST	134
103	FR BANNU	FR BANNU	FT/69/14/006	M	14	25-07-14	7+	18-08-14	20-08-14	EV	Y	Y	Y	Y	118
104	FR TANK	FR TANK	FT/71/14/002	F	56	08-07-14	7+	25-07-14		VACC	N	N	UK	DIED	135
105	KHYBER	BARA	FT/34/14/036	F	15	30-07-14	3				Y	N	Y	LOST	113
106	KHYBER	BARA	FT/34/14/051	M	12	02-08-14	5	07-08-14		VACC	Y	Y	UK	Y	110
107	KHYBER	LANDI KOTAL	FT/34/14/089	M	132	17-08-14	7+	23-09-14		NVI	Y	N	Y		95
108	KHYBER	BARA	FT/34/14/115	F	15	15-08-14	3	31-10-14	01-11-14	EV	Y	Y	Y		97
109	KHYBER	BARA	FT/34/14/123	F	24	01-07-14	1	LATE NOTIFIED			Y	N	Y		142
110	MOHMAND	SAFI	FT/35/14/015	M	21	25-05-14	7+	LATE NOTIFIED			Y	Y	Y	Y	179
111	WAZIR-N	MIRAN SHAH	FT/64/14/124	F	6	27-06-14	0	22-08-14	24-08-14	VACC	Y	Y	Y	LOST	146
112	WAZIR-N	MIR ALI	FT/64/14/118	F	24	04-06-14	0	02-08-14	03-08-14	NVI	Y	Y	Y	LOST	169
113	WAZIR-N	MIRAN SHAH	FT/64/14/115	F	26	14-06-14	7+	21-07-14	22-07-14	NVI	Y	UK	UK	LOST	159
114	WAZIR-N	MIRAN SHAH	FT/64/14/137	F	6	01-05-14	0	LATE NOTIFIED			UK	UK	UK	Y	203

€ Based on recall of parents

* Afp.rec Data as of 20-11-2014

60 days Follow-up not done

FUP = Residual Weakness at 60 days follow up.