



**World Health
Organization**

**Weekly
AFP Surveillance Update
Pakistan**

Week 10 (*Ended on 08th March, 2014*)

AFP Surveillance



***National Surveillance Cell
Federal EPI***

World Health Organization Country Office,
Chak Shahzad, Park Road,
Islamabad, Pakistan

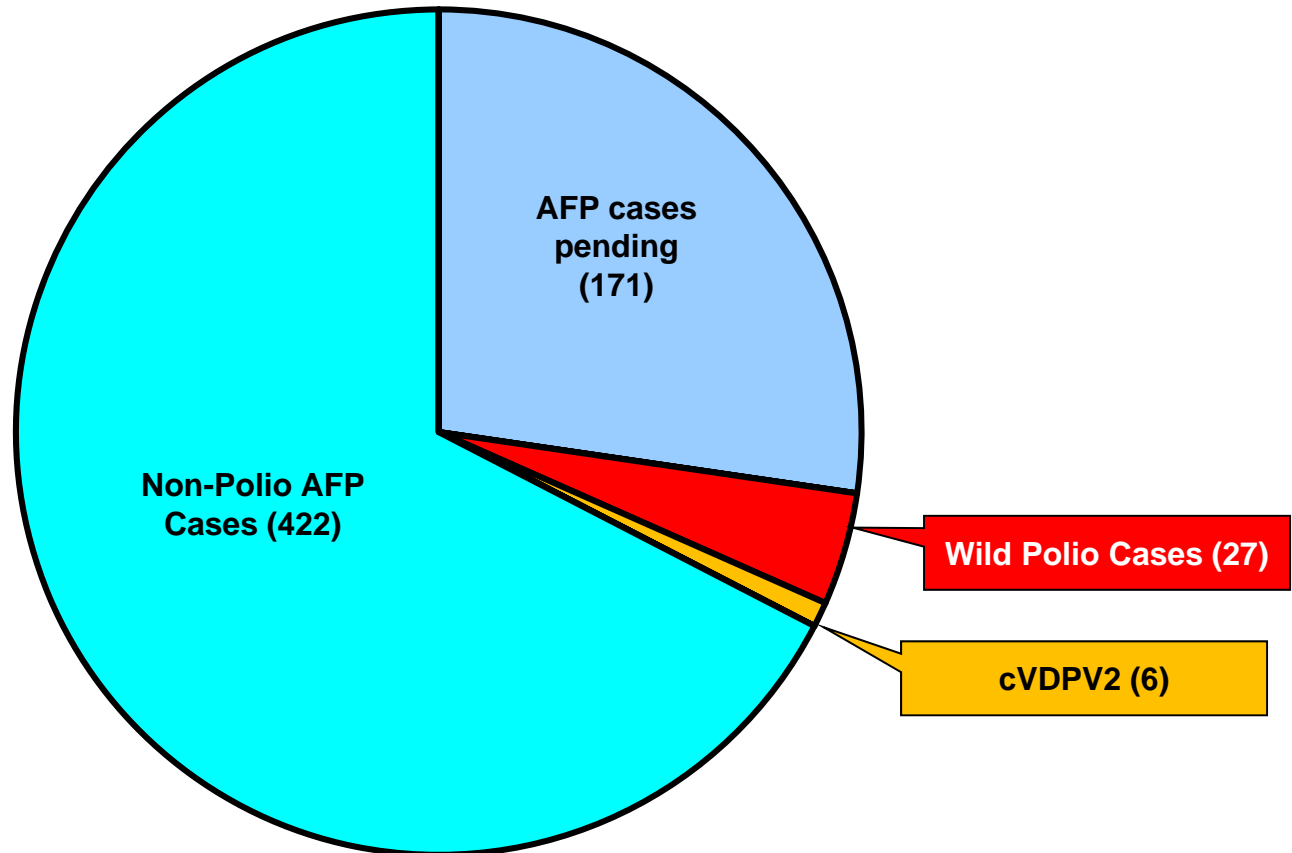
Tel: +92-51 9255123 / 9255282 /9255184

Fax: +92-51 9255274

Email: epidata@pak.emro.who.int

Web site: www.whopak.org

AFP Case Profile, 2014*



Total AFP Cases Reported = 626

**^5 Inadequate cases pending classification by ERC;
^28 Inadequate cases not due for FUP
^138 Pending in the Lab**

* Afp.rec Data as of 06-03-2014

Point in Time Comparison of polio cases by province/region 2013 & 2014*

Region/ Province	No. of polio cases		No. of infected districts/towns		Last polio case
	2013	2014	2013	2014	
Khyber Pakhtunkhwa	3	3	3	2	10-Feb -14
FATA / FR Areas	0	24	0	4	15-Feb -14
Sindh	1	0	1	0	31-Dec-13
Balochistan	0	0	0	0	02-Oct-12
Punjab	1	0	1	0	12-Dec-13
Pakistan	5	27	5	6	15-Feb-14

Four additional districts/town declared infected based on environmental samples in 2014

* Afp.rec Data as of 06-03-2014

Table 1: List of Confirmed Polio Cases, Pakistan 2014* (1/2)

S.NO.	PROVINCE/ REGION	DISTRICT	TEHSIL	EPID NO.	SEX	AGE (m)	DATE OF ONSET PARALYSIS	NO. OPV DOSES (based on parents recall)		FEVER	Asymmetric Paralysis	Rapid Progression	REFUSAL	W/PV TYPE	GENETICS
								Route	SIA's						Cluster
1	FATA	WAZIR-N\$	MIR ALI	FT/64/14/006	F	19	03-Jan-14	0	0	Y	Y	Y	N	NSL1	R4B
2	FATA	WAZIR-N\$	MIR ALI	FT/64/14/003	M	14	03-Jan-14	0	0	Y	Y	Y	N	NSL1	R4B
3	FATA	WAZIR-N\$	MIR ALI	FT/64/14/007	F	8	04-Jan-14	0	0	Y	Y	Y	N	NSL1	R4B
4	FATA	WAZIR-N\$	MIRAN SHAH	FT/64/14/004	F	13	04-Jan-14	0	0	Y	Y	Y	N	NSL1	R4B
5	FATA	WAZIR-N\$	MIRAN SHAH	FT/64/14/005	F	17	05-Jan-14	0	0	Y	Y	Y	N	NSL1	R4B
6	FATA	WAZIR-N\$	MIRAN SHAH	FT/64/14/011	F	12	10-Jan-14	0	0	Y	Y	Y	N	NSL1	R4B
7	FATA	WAZIR-N\$	MIR ALI	FT/64/14/018	M	12	11-Jan-14	0	0	Y	Y	Y	N	NSL1	R4B
8	FATA	KHYBER\$	BARA	FT/34/14/003	F	13	12-Jan-14	0	0	Y	Y	Y	N	NSL1	R4B
9	FATA	WAZIR-N\$	MIR ALI	FT/64/14/012	M	23	16-Jan-14	0	0	Y	Y	Y	N	NSL1	R4B
10	FATA	WAZIR-N\$	MIRAN SHAH	FT/64/14/016	M	10	17-Jan-14	0	0	Y	Y	Y	N	NSL1	R4B
11	FATA	WAZIR-N\$	MIRAN SHAH	FT/64/14/017	M	17	22-Jan-14	0	0	Y	Y	Y	N	NSL1	R4B
12	FATA	WAZIR-N\$	MIRAN SHAH	FT/64/14/019	F	18	24-Jan-14	0	0	Y	Y	Y	N	NSL1	R4B
13	FATA	WAZIR-N\$	MIRAN SHAH	FT/64/14/021	M	16	25-Jan-14	0	0	Y	Y	Y	N	NSL1	R4B
14	KPAKHTUNKHWA	BANNU	BANNU	KP/61/14/001	M	39	26-Jan-14	0	10^	Y	N	Y	Y	NSL1	R4B
15	FATA	WAZIR-N\$	MIR ALI	FT/64/14/024	M	18	28-Jan-14	0	0	Y	Y	Y	N	NSL1	R4B
16	FATA	WAZIR-N\$	MIRAN SHAH	FT/64/14/022	F	11	29-Jan-14	0	0	Y	Y	Y	N	NSL1	R4B
17	KPAKHTUNKHWA	PESHAWAR	PESHAWAR	KP/30/14/008	M	6	31-Jan-14	3	3	Y	Y	Y	Y	NSL1	R4B
18	FATA	WAZIR-N\$	MIRAN SHAH	FT/64/14/028	M	18	05-Feb-14	0	0	Y	Y	Y	N	NSL1	R4B
19	FATA	WAZIR-N\$	MIRAN SHAH	FT/64/14/032	M	18	08-Feb-14	0	0	Y	Y	Y	N	NSL1	R4B
20	FATA	WAZIR-N\$	MIRAN SHAH	FT/64/14/027	M	12	08-Feb-14	0	0	Y	Y	Y	N	NSL1	R4B
21	FATA	WAZIR-N\$	MIRAN SHAH	FT/64/14/034	F	18	09-Feb-14	3	3	Y	Y	Y	N	NSL1	R4B
22	KPAKHTUNKHWA	PESHAWAR	PESHAWAR	KP/30/14/012	M	18	10-Feb-14	3	3	Y	Y	Y	N	NSL1	R4B

\$ Security compromised area

^Under investigation

* Afp.rec Data as of 06-03-2014

Table 1: List of Confirmed Polio Cases, Pakistan 2014* (2/2)

S.NO.	PROVINCE/ REGION	DISTRICT	TEHSIL	EPID NO.	SEX	AGE (m)	DATE ONSET OF PARALYSIS	NO. OPV DOSES (based on parents recall)		FEVER	Asymmetric Paralysis	Rapid Progression	REFUSAL	WPV TYPE	GENETICS
								Route	SIA's						Cluster
23	FATA	WAZIR-N	MIRAN SHAH	FT/64/14/035	M	5	12-Feb-14	0	0	Y	Y	Y	N	NSL1	
24	FATA	FR BANNU	FR BANNU	FT/69/14/009	F	18	15-Feb-14	0	0	Y	Y	Y	N	NSL1	
25	FATA	WAZIR-N	MIRAN SHAH	FT/64/14/041	F	18	10-Feb-14	0	0	Y	N	Y	N	NSL1	
26	FATA	WAZIR-N	MIRAN SHAH	FT/64/14/038	M	44	15-Feb-14	0	0	Y	Y	Y	N	NSL1	
27	FATA	WAZIR-S	BIRMAL	FT/65/14/001	F	6	12-Feb-14	0	0	Y	Y	Y	N	NSL1	

\$ Security compromised area

New Case

^Under investigation

* Afp.rec Data as of 06-03-2014

Table 2: LAB Update 2014*

Month of Onset	AFP Cases	No virus isolated	Cases Under Process		Isolated Viruses from stools						
			Culture	ITD	Vaccine viruses		NPEV		Wild	Results within 14 days	
	n	n	n	n	n	%	n	%	n	n	%
January	380	269	3	0	24	6	67	18%	17	377	99%
February	318	174	92	0	17	5	25	8%	10	226	71%
March	2	0	2	0	0	0	0	0%	0	0	0%
Pakistan	700	443	97	0	41	6	92	13%	27	603	86%

* Data as of 06-03-2014

Table 3: Urgent / ITD Pending Cases (1/1)

S. #	Basic information									OPV doses				Urgent		Prov Diagnosis	Lab update			Remarks
	District	Tehsil	Union council	Epid number	Date of Onset	Age (M)	Sex	Date of 1st stool	Stool Adeq	RI	S1As	Last 6 S1As	Last dose	By Field	By NSCY		Lab No.	Days Inoc	Culture update	
Isolates pending for ITSD																				
1	WAZIR-N	RAZMAK	MUSAKAI	FT/64/14/033	08-Feb-14	14	M	13-Feb-14	Y	0	0	0		Y	Y	POLIO	617	5	P2	Discordant D
2	WAZIR-N	MIRAN SHAH	ANGHAR KALAY	FT/64/14/037	16-Feb-14	10	M	19-Feb-14	N	0	0	0		Y	Y	SUSPECTED POLIO	672	5	P1	Discordant D
3	WAZIR-N	MIR ALI	ZERMI	FT/64/14/039	14-Feb-14	8	F	18-Feb-14	Y	0	0	0		Y	Y	POLIO	753	5	P2	Discordant D
4	WAZIR-N	MIRAN SHAH	SHEWA	FT/64/14/042	21-Feb-14	17	M	26-Feb-14	Y	0	0	0		Y	Y	POLIO	817	1	P1	Discordant D
5	WAZIR-N	MIR ALI	MIR ALI	FT/64/14/047	21-Feb-14	7	F	27-Feb-14	Y	0	0	0		Y	Y	POLIO	815	1	P1	Discordant D
6	HARIPUR	GHAZI	KHUTERA	KP/12/14/001-C1		48	M	20-Feb-14	-	-	-	03-Feb-14	N	-	-		744	8	SL3	Waiting rRT PCR for VDPV screening
7	NOWSHERA	NOWSHERA	PIR PIAI	KP/32/14/008	18-Feb-14	26	M	20-Feb-14	Y	3	7+	6	12-Feb-14	N		APP	721	8	SL3	Waiting rRT PCR for VDPV screening
8	NOWSHERA	NOWSHERA	MISRI BANDA	KP/32/14/011	25-Feb-14	18	F	27-Feb-14	Y	3	7+	6	24-Feb-14	N	N	TRAUMA	822	8	SL1,3	Waiting rRT PCR for VDPV
9	RYKHAN	RYKHAN	AMIN GARH	PB/72/14/011-C2		36	M	23-Feb-14	-	-	-	21-Jan-14	N	-	-		756	8	SL2	Waiting rRT PCR for VDPV screening
10	VEHARI	BUREWALA	81	PB/63/14/008	14-Feb-14	18	M	19-Feb-14	Y	3	7+	6	21-Jan-14	N	N	GBS	738	7	SL3	Waiting rRT PCR for VDPV screening
11	VEHARI	BUREWALA	86	PB/63/14/009	23-Feb-14	34	F	26-Feb-14	Y	3	7+	6	21-Jan-14	N	N	MONOPLÉGIA	829	4	SL1	Waiting rRT PCR for VDPV screening
12	HYDERABAD	LATIFABAD	12	SD/21/14/006	19-Feb-14	10	F	23-Feb-14	Y	0	7+	6	13-Feb-14	N		QUADRIPARESIS	760	5	SL1,3	Waiting rRT PCR for VDPV
13	KHIBALDIA	KHIBALDIA	2 (ITTEHAD)	SD/61/14/002	10-Feb-14	24	F	13-Feb-14	Y	0	0	0		Y	Y	POLIO/GBS	592	8	P1	Discordant D
Reported urgent (by field / NSCY criteria)																				
14	DBUGTI *	DERA BUGTI	DERA BUGTI	BN/35/14/001	20-Jan-14	33	M	22-Feb-14	N	0	7+	6	22-Jan-14	Y	N	APP	892	4	UP	
15	MASTUNG *	MASTUNG	KHAD KUCHA	BN/51/14/001	17-Feb-14	2	F	02-Mar-14	Y	#	#	#	20-Jan-14	Y	N	MENINGITIS	893	4	UP	
16	DGKHAN *	DGKHAN	SAMINA	PB/81/14/021	20-Feb-14	5	M	02-Mar-14	Y	3	3	3	14-Feb-14	N	Y	TRAUMATIC NEURITIS	888	4	UP	

* New addition § New results # Data not available ✗ NSCY Criteria = Fever, Rapid Progress, Age < 48 months and OPV Doses < 7 UP = Under process
Urgent (Field/NSCY) / Inadequate specimens / Age 12-35 months / Zero OPV dose UPending for genomic sequencing

Comparison environmental sampling results 2012-13*

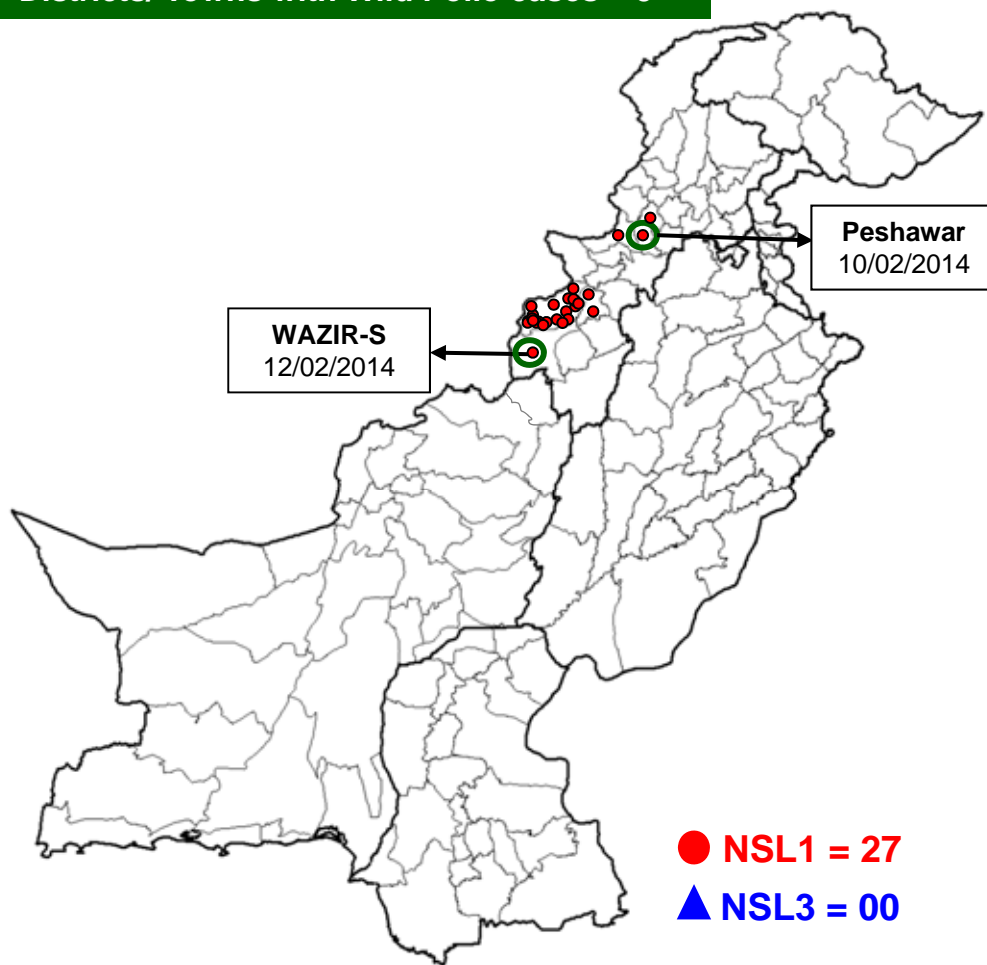
DISTRICT	2012			2013			Last
	TOTAL	WILD		TOTAL	WILD		
	n	n	%	n	n	%	
LAHORE	36	18	50%	60	4	7%	12-Dec-13
MULTAN	36	4	11%	36	2	6%	09-Dec-13
RAWALPINDI	12	7	58%	12	6	42%	25-Nov-13
FAISALABAD	8	1	13%	36	1	3%	03-Jan-13
KHIGIQBAL	24	4	17%	24	5	17%	18-Dec-13
KHIGADAP	24	16	67%	34	14	38%	20-Dec-13
KHIBALDIA	24	1	4%	24	3	8%	23-Dec-13
SUKKUR	17	7	41%	24	0	0%	05-Sep-12
HYDERABAD	6	6	100%	12	7	58%	12-Aug-13
PESHAWAR	24	20	83%	24	21	83%	27-Dec-13
QUETTA	28	4	14%	35	2	3%	28-Dec-13
PAKISTAN	239	88	37%	321	65	18%	28-Dec-13

* Data as of 06-03-2014

Data source Polio RRL

Map1: Distribution of Wild Polio cases Pakistan 2014*

Districts/ Towns with Wild Polio cases = 5



Province/ Country	Date of Last Case		Number of cases 2013	
	P1	P3	P1	P3
PUNJAB	-	Jun, 2010	-	-
SINDH	-	Jan, 2010	-	-
KHYBER- PAKHTUNKHWA	Feb, 2014	Oct, 2010	3	-
FATA	Feb, 2014	Apr, 2012	24	-
BALUCHISTAN	-	Apr, 2010	-	-
AJK	-	Jun, 2000	-	-
GILGIT-BALTISTAN	-	-	-	-
ISLAMABAD	-	Sep, 2008	-	-
PAKISTAN	Feb, 2014	Apr, 2012	27	-

○ District with last polio case in province

Cases randomly placed
in districts

— Provincial Boundary
— Districts Boundary

* Afp.rec Data as of 06-03-2014

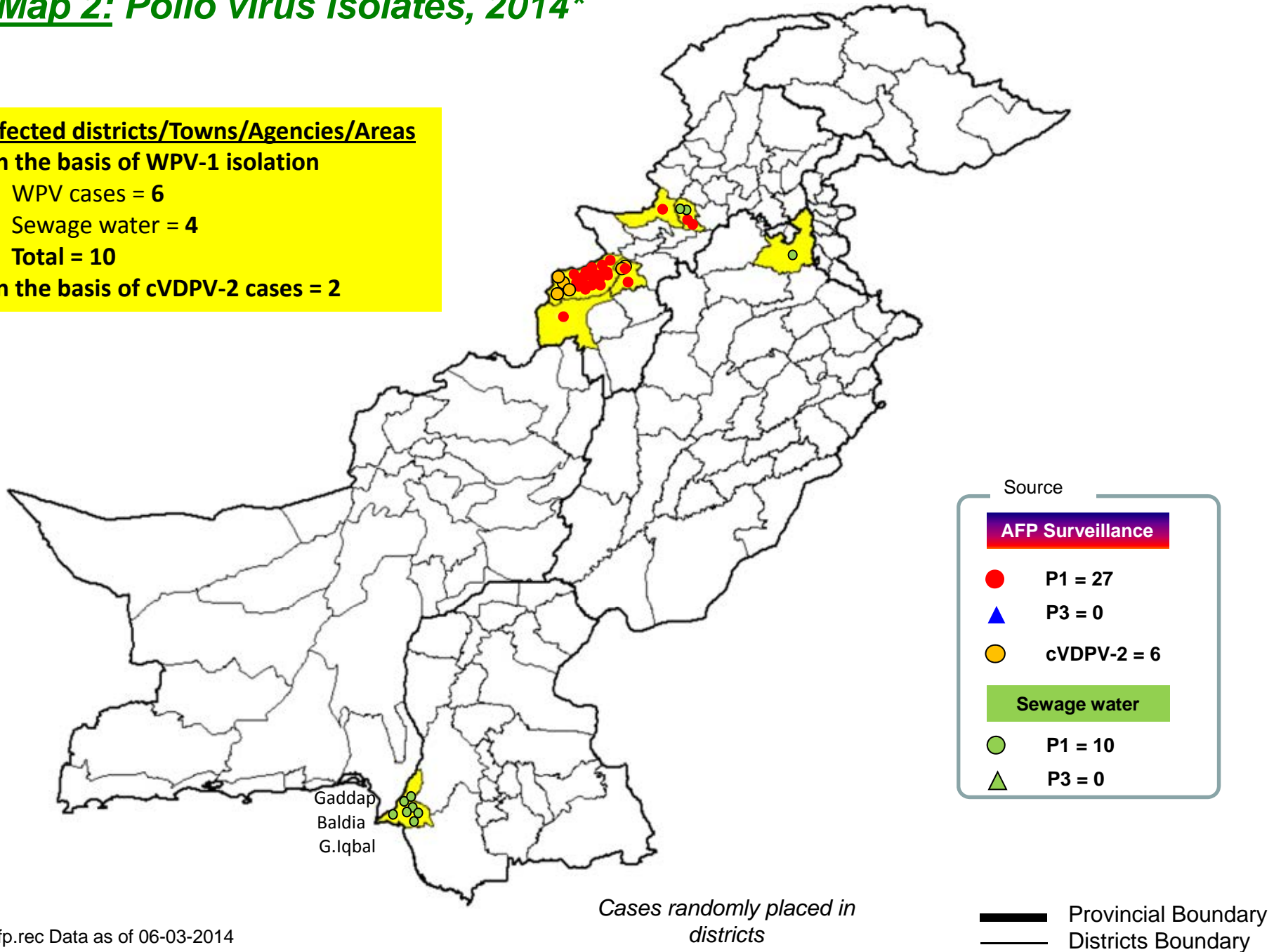
Map 2: Polio virus isolates, 2014*

Infected districts/Towns/Agencies/Areas

On the basis of WPV-1 isolation

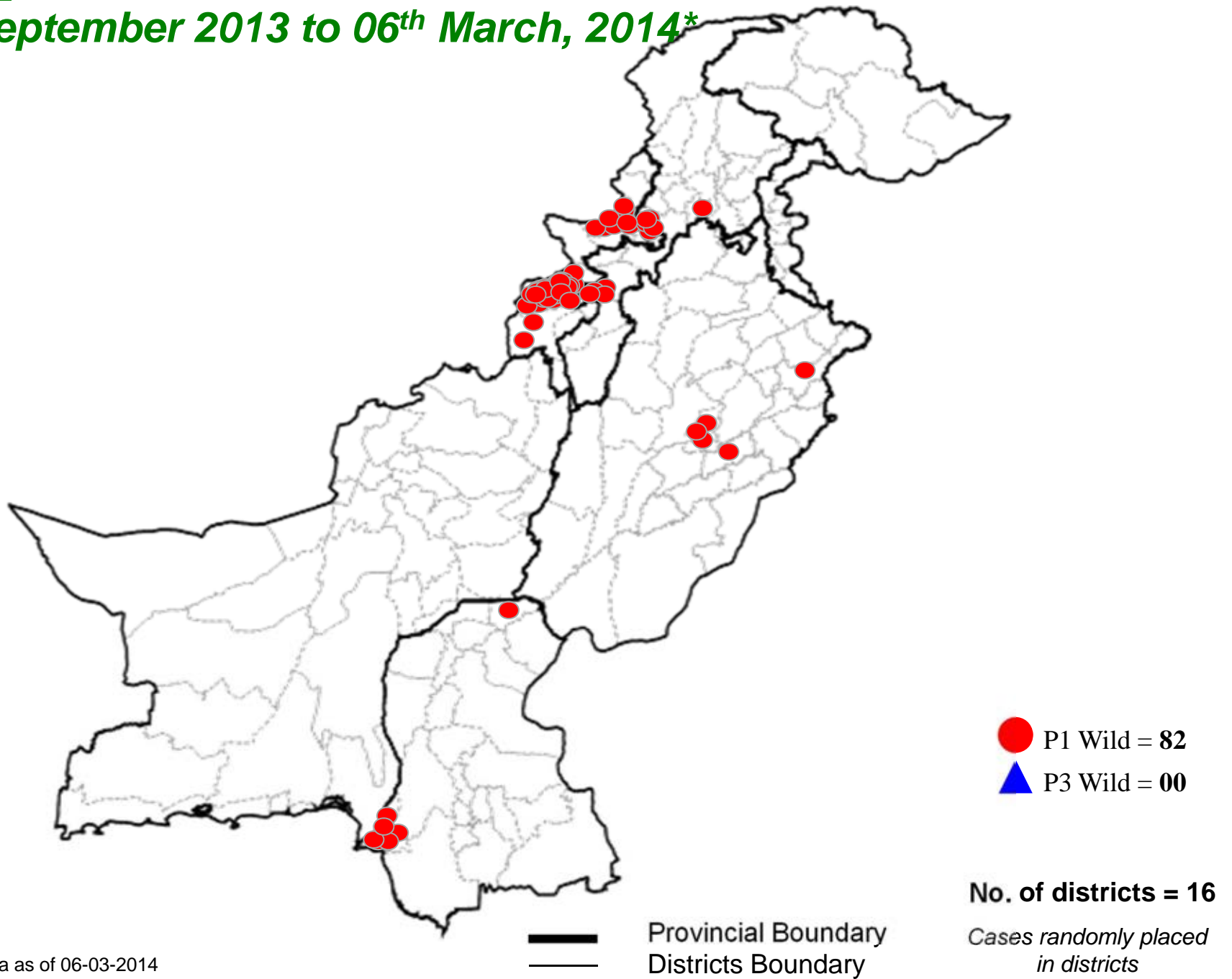
- WPV cases = 6
- Sewage water = 4
- Total = 10

On the basis of cVDPV-2 cases = 2



* Afp.rec Data as of 06-03-2014

Map 3: Wild Polio cases in the last 6 months from 07th September 2013 to 06th March, 2014*



* Afp.rec Data as of 06-03-2014

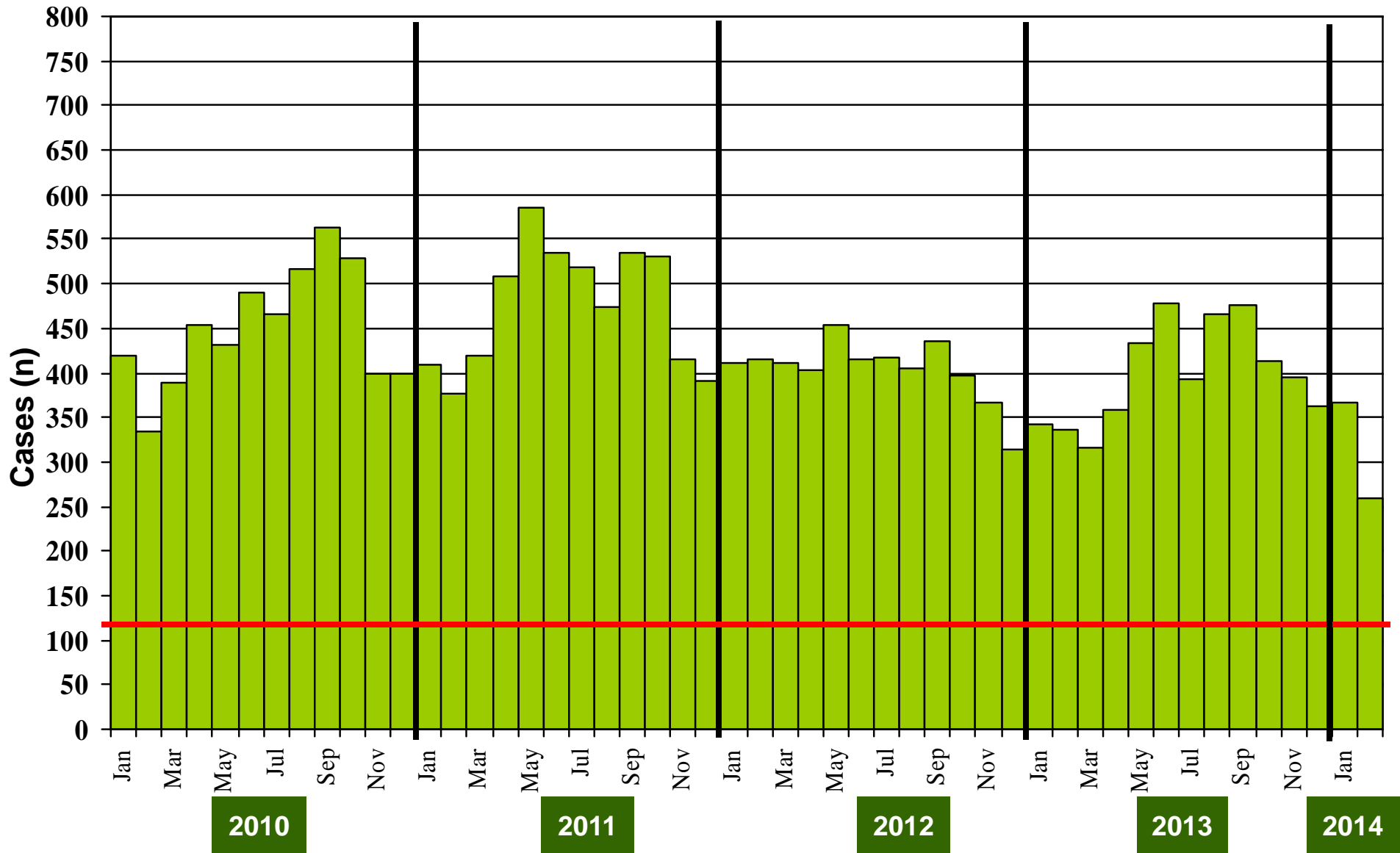
**Table 4: Distribution of AFP Cases By Week of Onset ^
Pakistan 2013-14* [Week number/Ending on]**

PROVINCE	W 47 23 Nov 2013	W 48 30 Nov 2013	W 49 07 Dec 2013	W 50 14 Dec 2013	W 51 21 Dec 2013	W 52 28 Dec 2013	W 01 04 Jan 2014	W 02 11 Jan 2014	W 03 18 Jan 2014	W 04 25 Jan 2014	W 05 01 Feb 2014	W 06 08 Feb 2014	W 07 15 Feb 2014	W 08 22 Feb 2014	W 09 01 Mar 2014
PUNJAB	43	29	34	40	23	50	29	31	51	52	36	36	41	26	13
SINDH	24	21	15	18	13	17	9	18	17	19	8	19	23	15	5
KP	19	23	19	20	19	24	12	20	13	18	17	22	11	14	3
FATA	8	4	7	5	6	9	8	8	7	6	9	11	13	3	0
BALUCHISTAN	12	3	5	5	3	4	1	4	5	7	9	2	5	6	0
AJK	1	1	2	0	0	2	1	2	0	1	0	2	1	1	0
GILGIT BILTISTAN	0	1	1	0	0	0	0	0	0	0	0	0	0	2	0
ISLAMABAD	0	0	0	0	0	1	0	0	0	0	0	1	0	0	0
PAKISTAN	107	82	83	88	64	107	60	83	93	103	79	93	94	67	21

* Afp.rec & Afplab.rec: Data as of 06-03-2014

^ MMWR Epidemiological Weeks

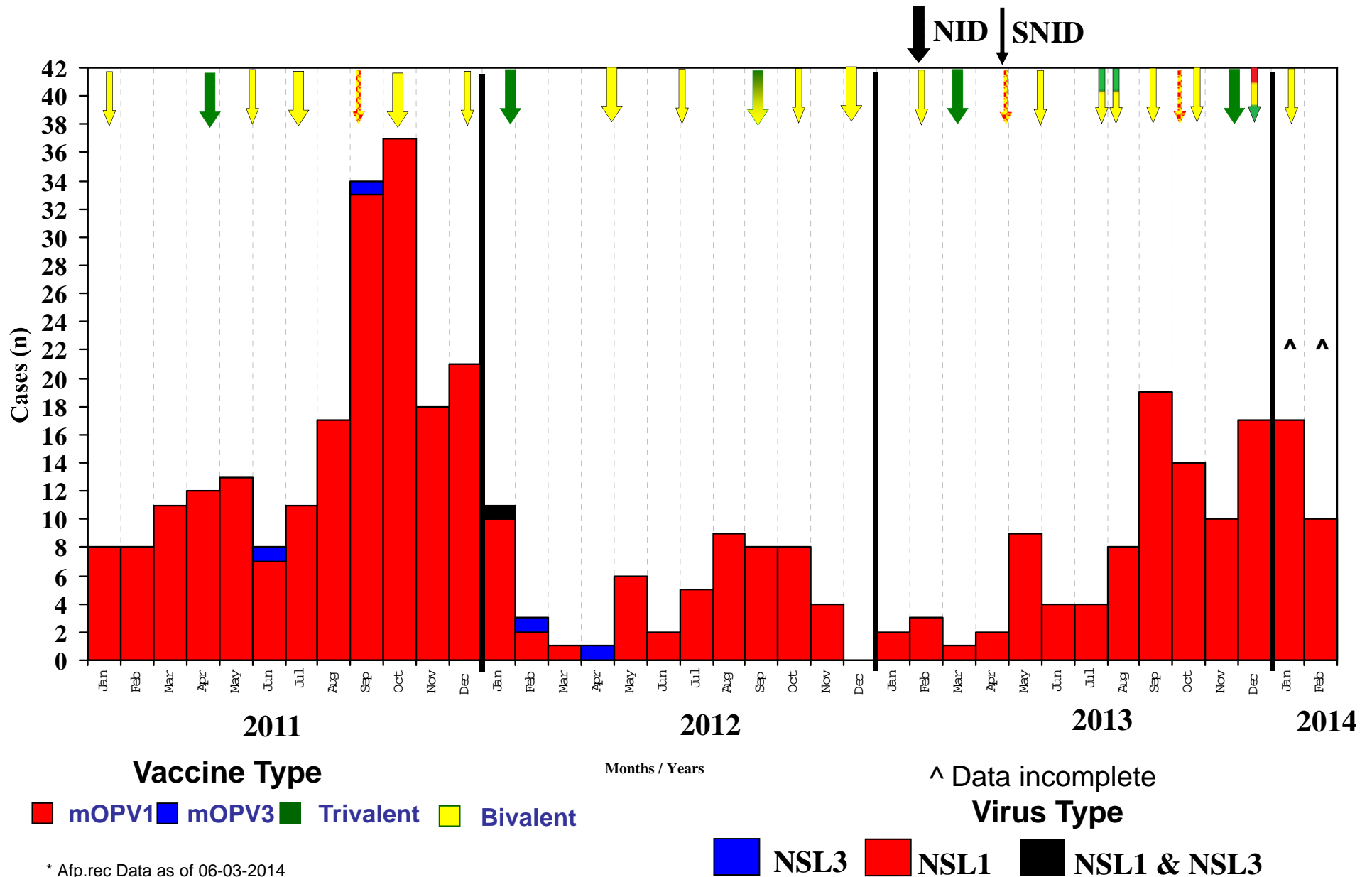
Graph 1: Distribution of AFP Cases by Month, Pakistan 2010-2014*



@ Non-polio AFP rate of 2/100,000 children < 15 years

* Afp.rec Data as of 06-03-2014

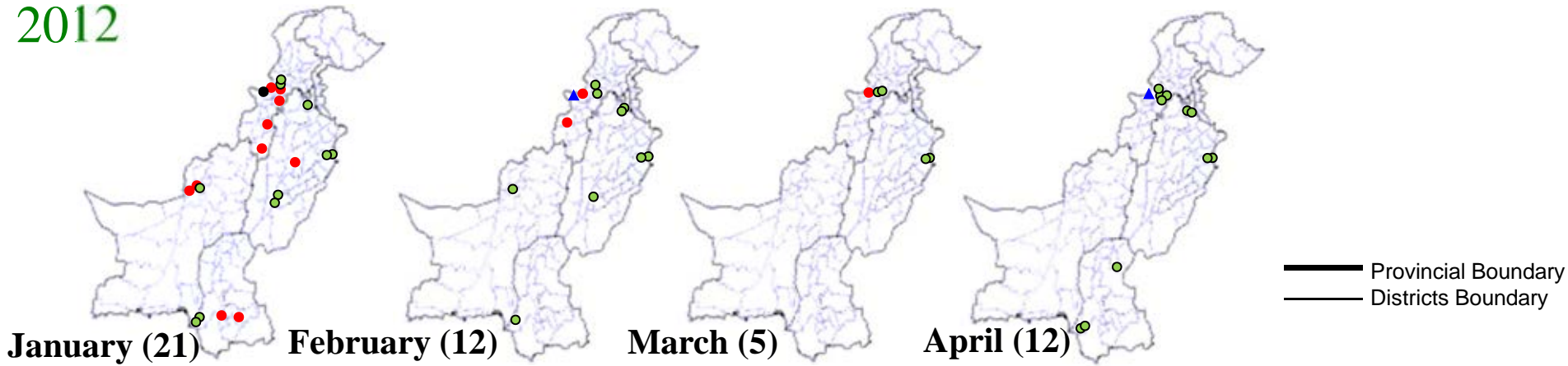
Confirmed Polio Cases By Poliovirus Type, 2011-2014*



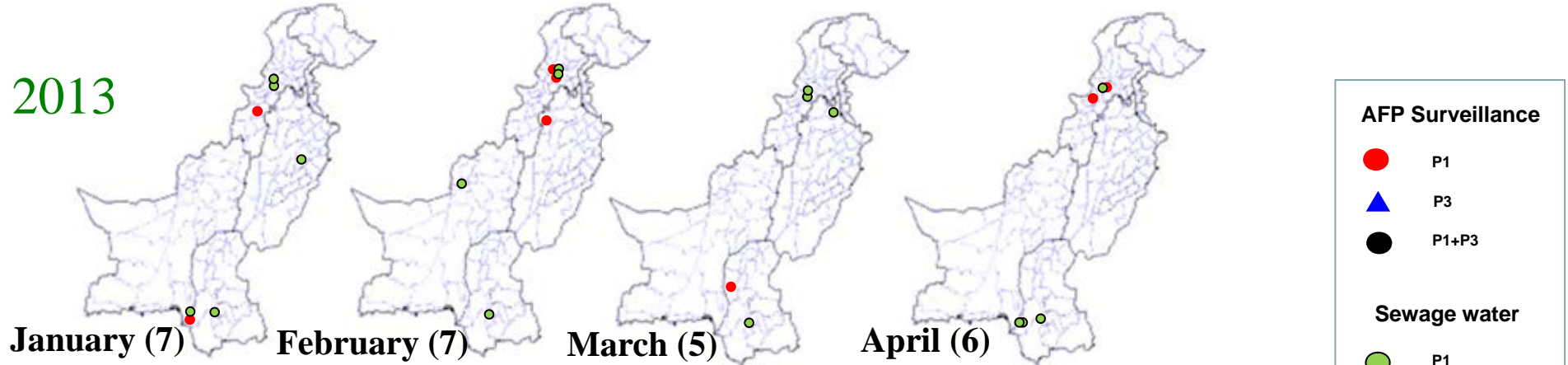
* Afp.rec Data as of 06-03-2014

Map 4: Monthly Comparison of P1 & P3 Polio Cases/Isolates 2012-2014*

2012



2013



2014

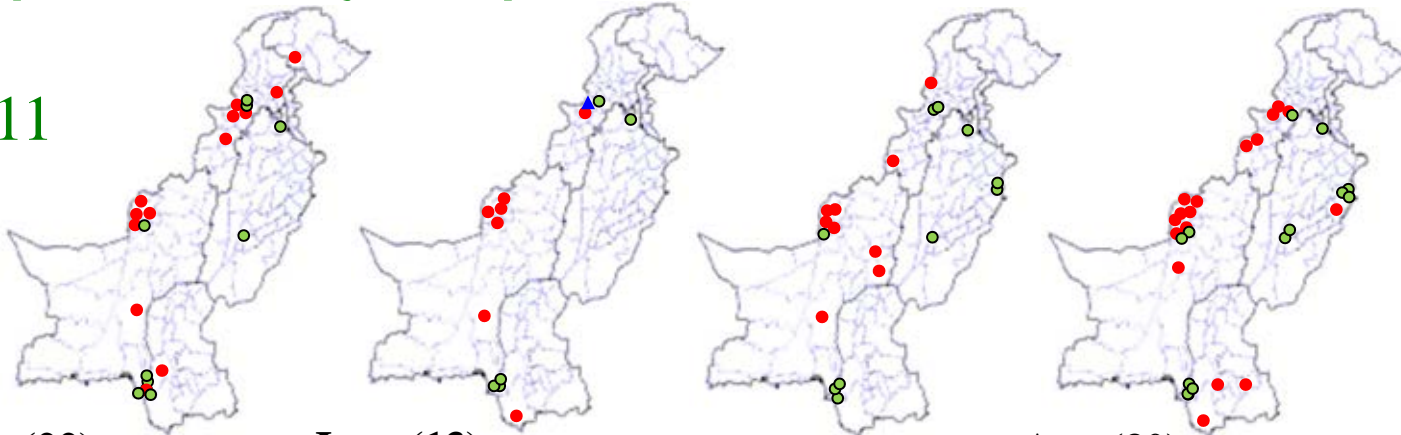


Environmental surveillance Started:
 July, 2009: Lahore & Karachi
 June, 2010: Rawalpindi, Peshawar & Quetta
 July, 2010: Multan
 April 2012: Sukkur
 Hyderabad: July 2012
 Faisalabad: September 2012

* Afp.rec Data as of 06-03-2014

Map 4.1: Monthly Comparison of P1 & P3 Polio Cases/Isolates 2011-2013*

2011



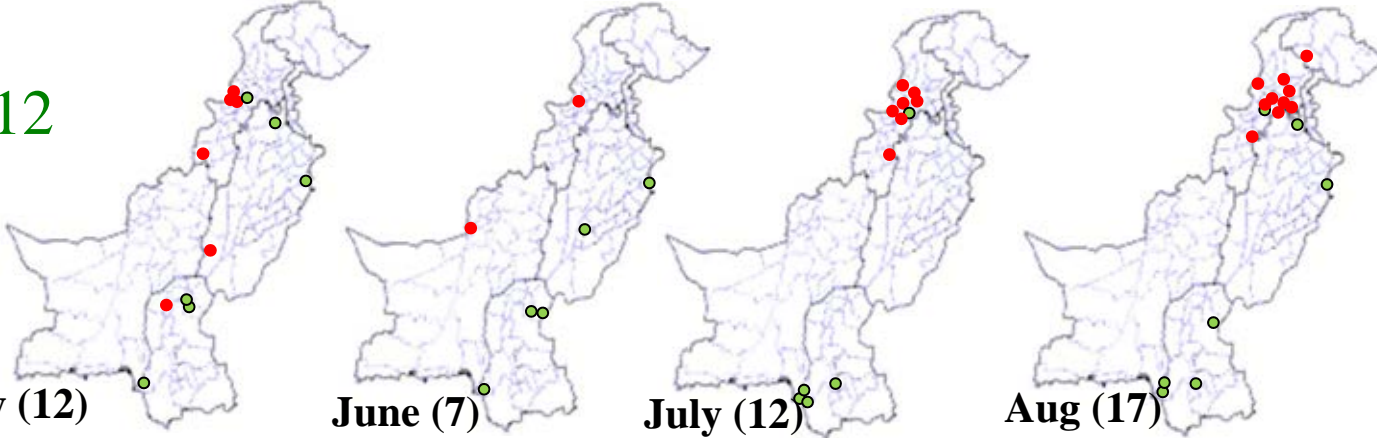
May (22)

June (13)

July (19)

Aug (30)

2012



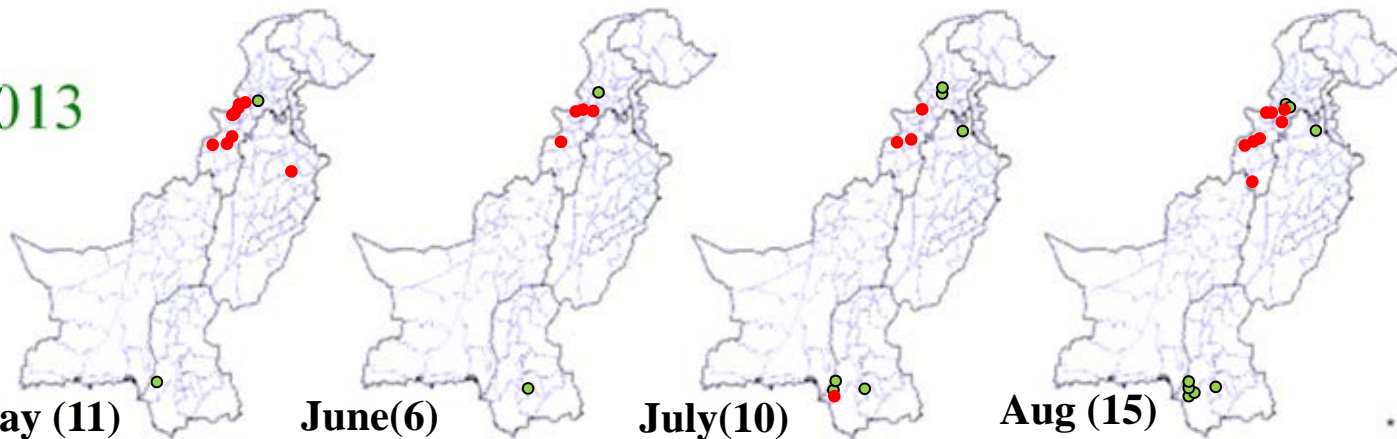
May (12)

June (7)

July (12)

Aug (17)

2013



May (11)

June(6)

July(10)

Aug (15)

AFP Surveillance

- P1
- ▲ P3
- Mixture P1 & 3

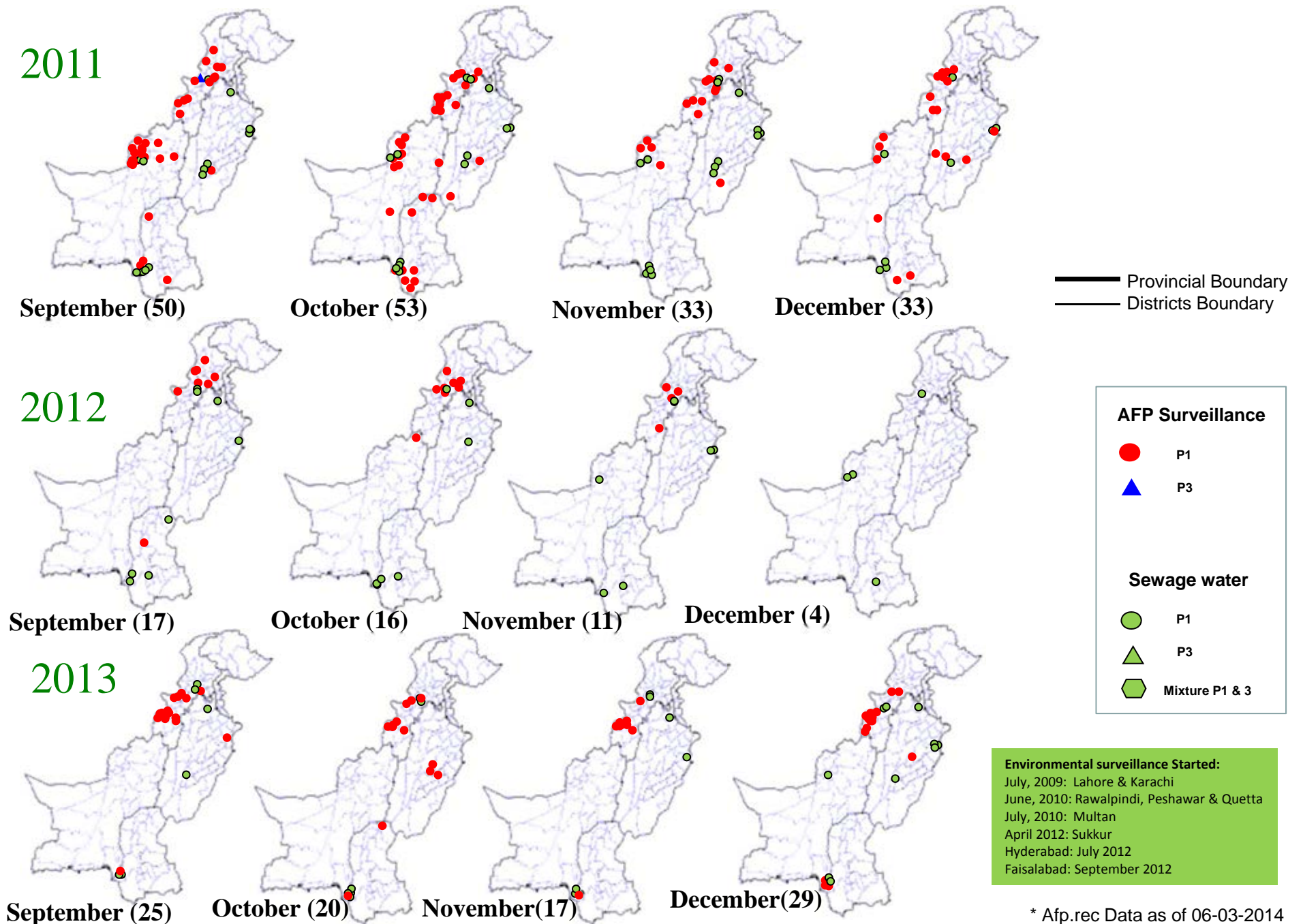
Sewage water

- P1
- ▲ P3
- Mixture P1 & 3

Environmental surveillance Started:
 July, 2009: Lahore & Karachi
 June, 2010: Rawalpindi, Peshawar & Quetta
 July, 2010: Multan
 April 2012: Sukkur
 Hyderabad: July 2012
 Faisalabad: September 2012

* Afp.rec Data as of 06-03-2014

Map 4.2: Monthly Comparison of P1 & P3 Polio Cases/Isolates 2011-2013*

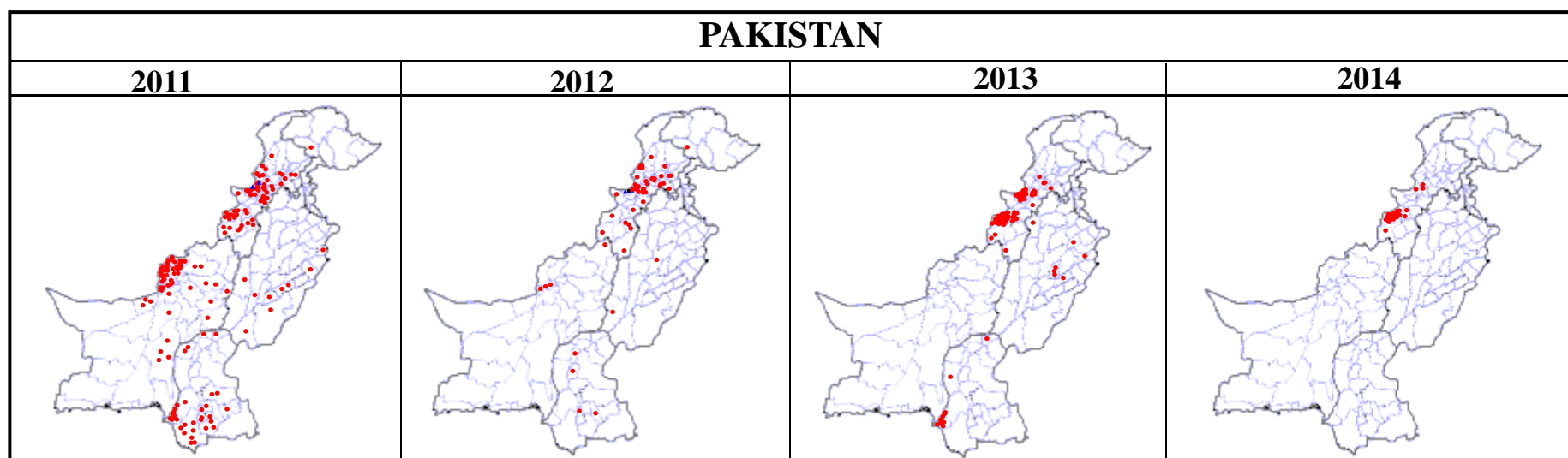


* Afp.rec Data as of 06-03-2014

Table 5: Polio Eradication Update, Pakistan 2011-2014*

Province/Region	Polio 1				Polio 3				Total Wild			
	2011	2012	2013	2014	2011	2012	2013	2014	2011	2012	2013	2014
PUNJAB	9	2	7	-	0	-	-	-	9	2	7	-
SINDH	33	4	10	-	0	-	-	-	33	4	10	-
KP	23	27	11	3	0	-	-	-	23	27	11	3
FATA^	57	17	65	24	2	2	-	-	59	20^	65	24
BALUCHISTAN	73	4	-	-	0	-	-	-	73	4	-	-
AJK	0	-	-	-	0	-	-	-	0	-	-	-
Gilgit-Baltistan	1	1	-	-	0	-	-	-	1	1	-	-
ISLAMABAD	0	-	-	-	0	-	-	-	0	-	-	-
PAKISTAN	196	55	93	27	2	2	-	-	198	58	93	27

^ FATA reported mixture of NSL1 & NSL3



* Afp.rec Data as of 06-03-2014

Table 6: Vaccination status of non polio AFP cases age 6-59 months 2011-2014*

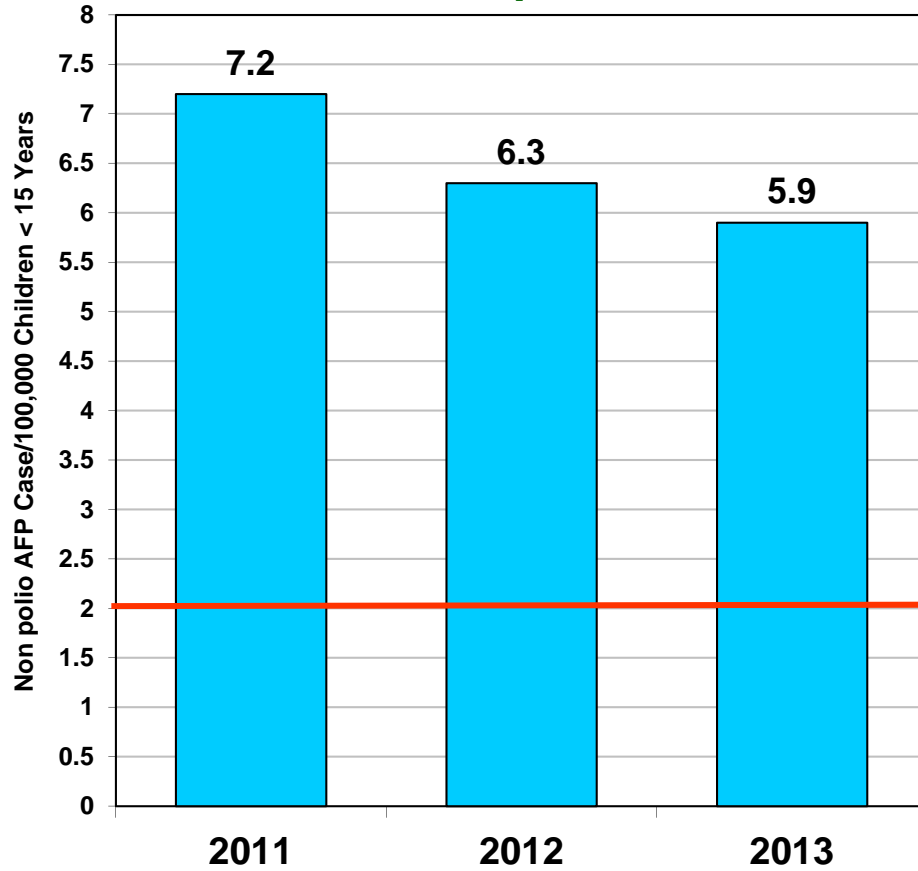
REGION	0 dose				1-2 doses				3 doses				4-6 doses				7+ doses			
	11	12	13	14	11	12	13	14	11	12	13	14	11	12	13	14	11	12	13	14
Central Punjab	0%	0%	0%	2%	1%	0%	0%	0%	2%	0%	1%	3%	6%	4%	7%	3%	92%	95%	91%	92%
North Punjab	0%	0%	0%	0%	1%	0%	0%	0%	1%	0%	0%	4%	5%	4%	4%	4%	93%	96%	96%	92%
South Punjab	0%	0%	0%	0%	0%	0%	0%	0%	1%	0%	0%	0%	5%	4%	5%	4%	93%	96%	94%	96%
PUNJAB	0%	0%	0%	1%	1%	0%	0%	0%	1%	0%	0%	2%	5%	4%	6%	4%	93%	96%	93%	94%
Karachi	4%	1%	1%	17%	1%	1%	5%	0%	0%	2%	0%	17%	6%	6%	6%	0%	88%	90%	88%	67%
North Sindh	0%	0%	0%	0%	1%	0%	0%	0%	0%	1%	0%	0%	5%	4%	5%	9%	94%	94%	95%	91%
South Sindh	1%	0%	0%	0%	1%	1%	0%	0%	0%	2%	1%	0%	6%	4%	7%	4%	93%	93%	91%	96%
SINDH	1%	0%	0%	3%	1%	1%	1%	0%	0%	1%	0%	3%	6%	4%	6%	6%	92%	93%	92%	88%
Central Khyber Pakhtunkhwa	1%	2%	2%	0%	1%	1%	1%	0%	0%	0%	1%	4%	3%	2%	2%	7%	95%	95%	95%	89%
North Khyber Pakhtunkhwa	1%	2%	1%	5%	2%	2%	1%	0%	1%	2%	1%	0%	7%	9%	7%	5%	90%	85%	91%	91%
South Khyber Pakhtunkhwa	2%	2%	1%	0%	4%	1%	0%	0%	4%	1%	1%	0%	7%	9%	4%	0%	83%	87%	95%	100%
Khyber Pakhtunkhwa	1%	2%	1%	2%	2%	1%	0%	0%	1%	1%	1%	2%	5%	6%	4%	5%	91%	89%	94%	92%
FATA	14%	18%	39%	67%	10%	6%	6%	0%	5%	3%	6%	0%	11%	12%	6%	0%	61%	62%	43%	33%
North Balochistan	4%	12%	9%	0%	12%	10%	11%	10%	23%	3%	3%	0%	12%	17%	28%	0%	50%	57%	49%	90%
Quetta Block	31%	14%	8%	0%	10%	10%	8%	20%	3%	0%	0%	0%	14%	14%	21%	0%	43%	62%	64%	80%
Rest of Balochistan	7%	9%	5%	0%	2%	6%	3%	0%	5%	5%	5%	25%	10%	10%	25%	0%	76%	70%	60%	50%
BALUCHISTAN	16%	8%	6%	0%	6%	8%	6%	5%	6%	3%	4%	5%	12%	17%	20%	0%	60%	64%	64%	86%
PAKISTAN	2%	1%	3%	6%	1%	1%	1%	0%	1%	1%	1%	3%	6%	5%	6%	4%	89%	92%	89%	87%

* Afp.rec Data as of 06-03-2014

Key Surveillance Indicators; 2011-2013*

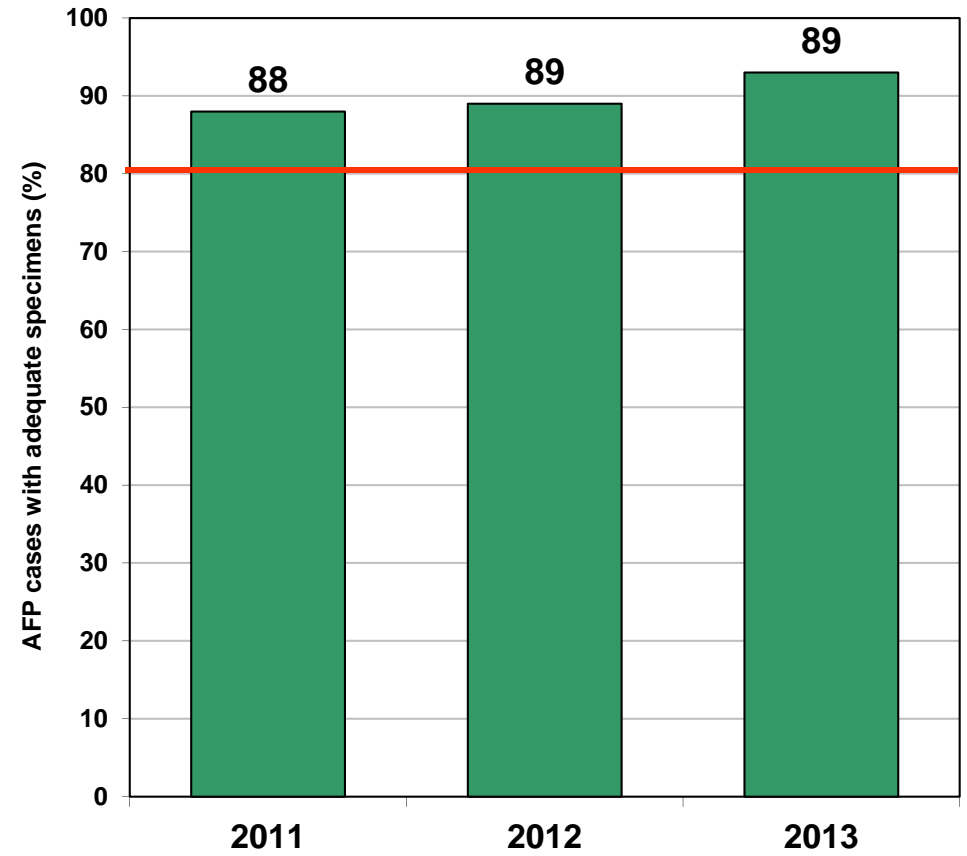
(Non polio AFP rate and % AFP cases with adequate specimens)

Graph 3



■ Non Polio AFP Rate

Graph 4



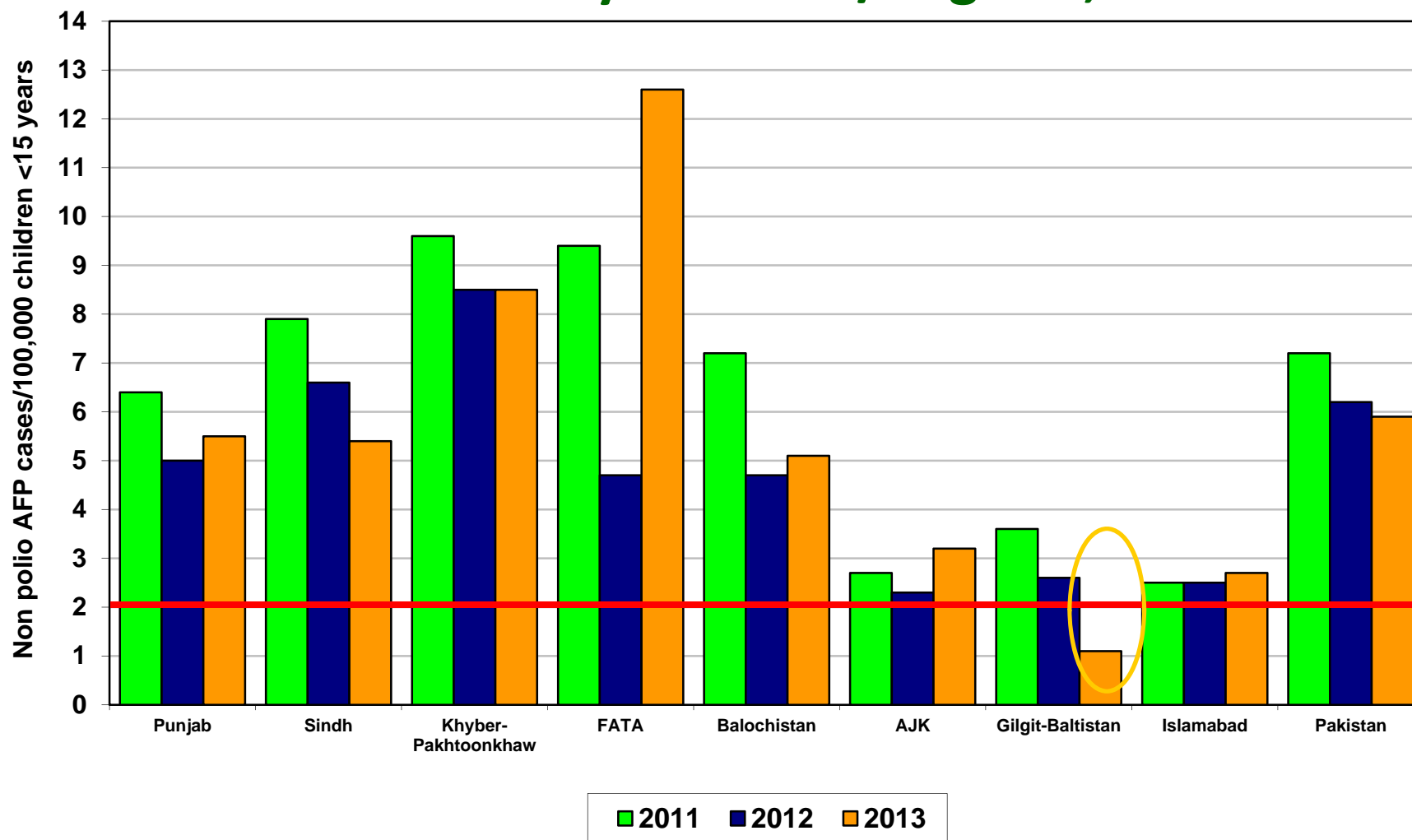
■ % AFP with Adequate Specimens

— Target

Non Polio AFP rate Up to Week No. 52 ended on 28th December, 2013

* Afp.rec Data as of 06-03-2014

Non Polio AFP Rate By Province/Regions, 2011-2013*

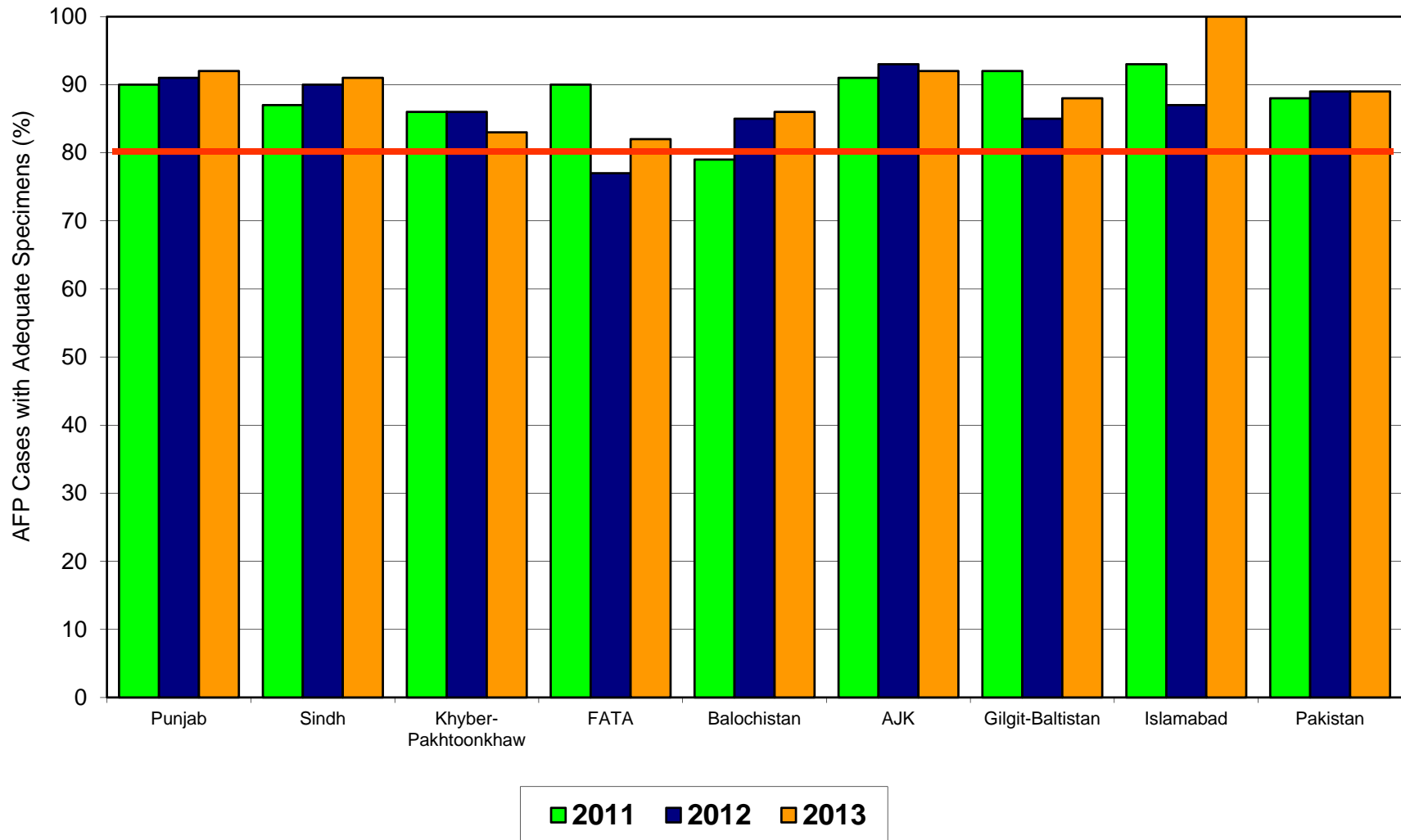


Non Polio AFP rate Up to Week No. 52 ended on 28th December, 2013

Target Non-Polio AFP Rate 2/ 100000 < 15 years of the age

* Afp.rec Data as of 06-03-2014

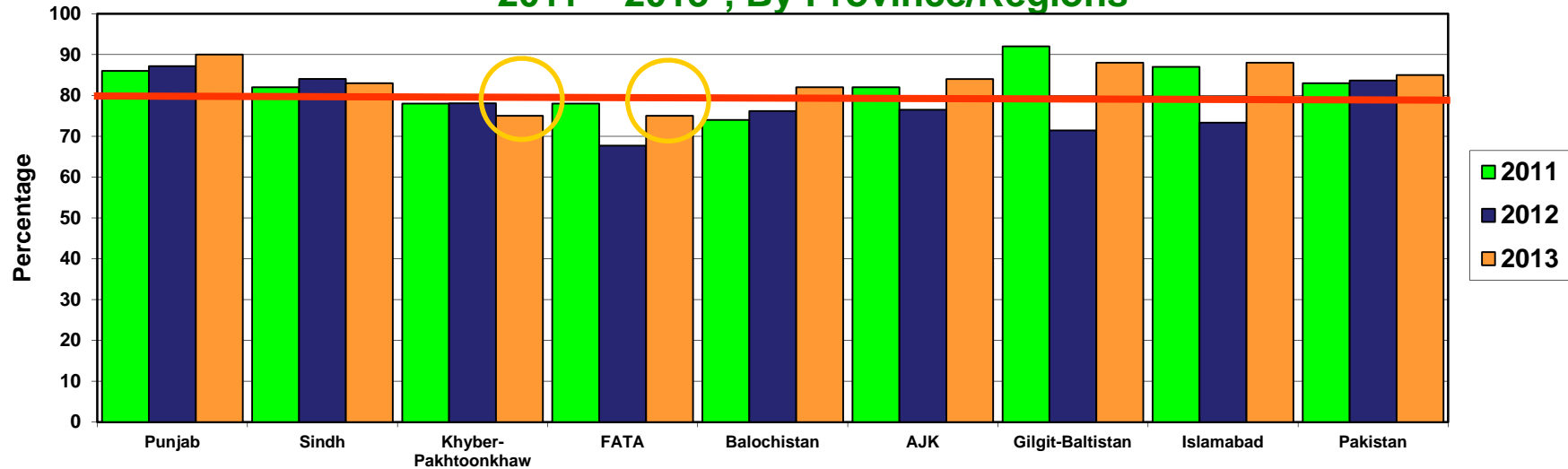
Percent AFP Cases with Adequate Specimens By Province/Regions, 2011-2013*



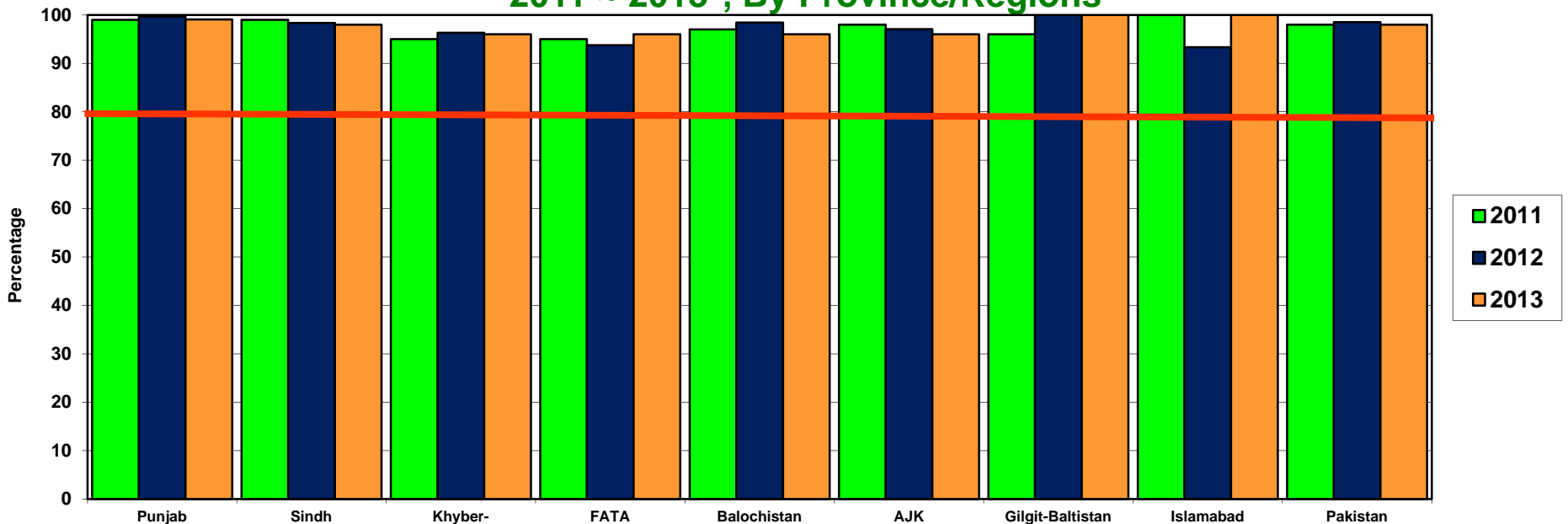
* Afp.rec Data as of 06-03-2014

Target Adequate Sample cases = 80%

**Graph 5: Percent AFP Cases Notified within 07 days of paralysis onset
2011 ~ 2013*, By Province/Regions**



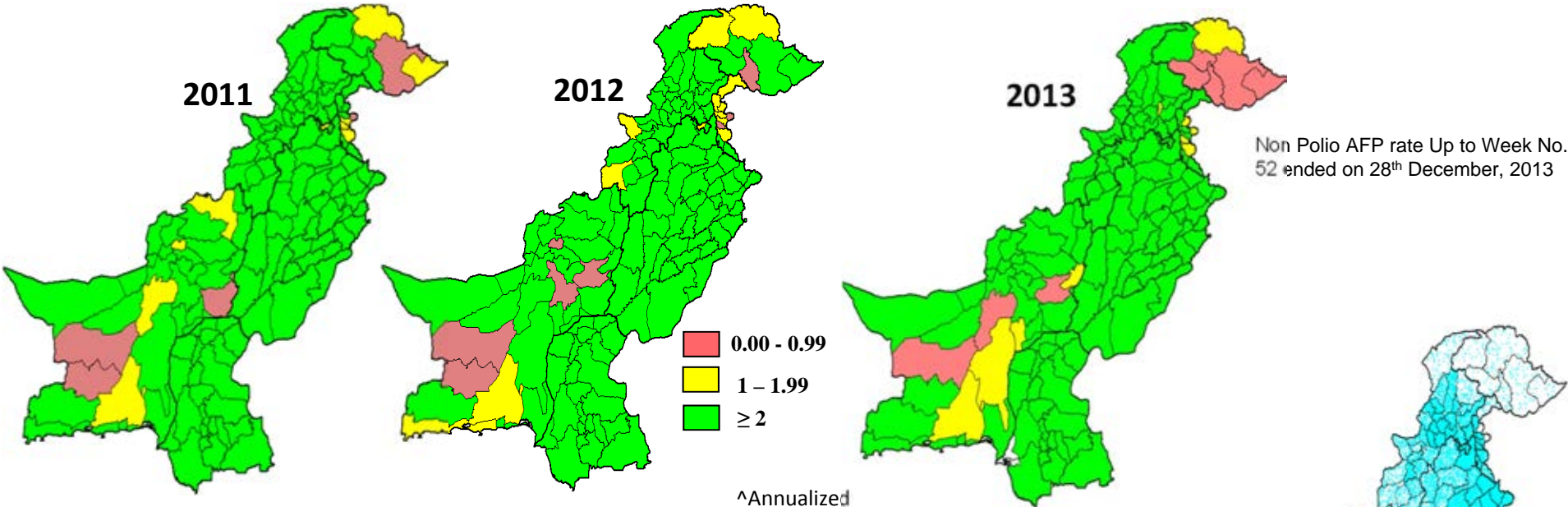
**Graph 6: Percent AFP Cases Investigated within 48 hours of notification
2011 ~ 2013*, By Province/Regions**



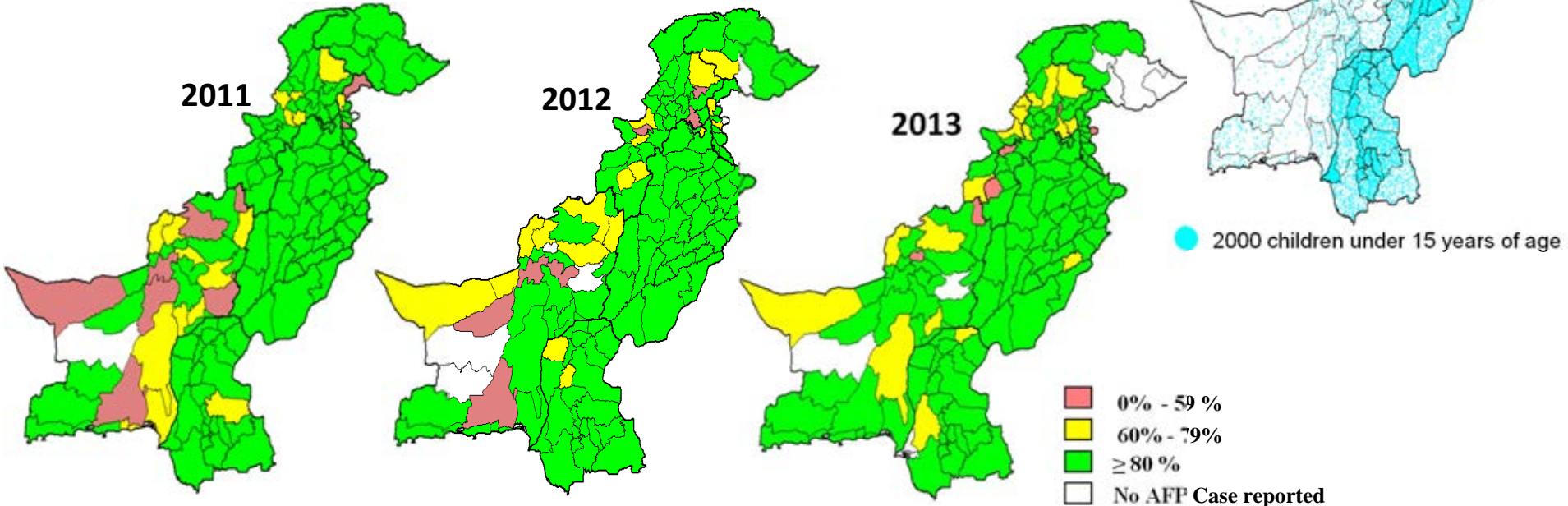
* Afp.rec Data as of 06-03-2014

— Target

Non-Polio^ AFP Rate by District



Percent AFP Cases with Adequate Specimens, by District



* Afp.rec Data as of 06-03-2014

Table 7: AFP CASES PENDING FOR CLASSIFICATION WITH DATE OF ONSET MORE THAN 90 DAYS* 2013 (1/4)

S. No	DISTRICT	TEHSIL	EPID	SEX	AGE	DONSET	DOSE€	DSTOOL1	DSTOOL2	LAB	FEVER	ASYM	PROG	FUP	PEND (DAYS)
1	KARAK	KARAK	KP/51/13/005	F	13	1/1/2013	7+	2/15/2013	2/17/2013	EV	N	Y	Y	Y	429
2	MARDAN	MARDAN	KP/40/13/007	M	29	1/17/2013	7+	2/6/2013	2/7/2013	EV	Y	Y	Y	Y	413
3	PESHAWAR	PESHAWAR	KP/30/13/008	M	96	1/15/2013	7+	2/26/2013	2/27/2013	NVI	N	N	Y	Y	415
4	SWAT	SWAT	KP/24/13/004	M	120	2/20/2013	7+	Child Died Before Stool Collection			Y	N	Y	DIED	379
5	WAZIR-N	MIRAN SHAH	FT/64/13/001	M	96	2/8/2013	6	2/13/2013		NVI	Y	N	Y	DIED	391
6	HYDERABAD	HYDERABAD CITY	SD/21/13/024	M	84	9/28/2013	7+	Child Died Before Stool Collection			N	N	Y	DIED	159
7	HYDERABAD	HYDERABAD RURAL	SD/21/13/033	F	43	10/17/2013	7+	12/10/2013	12/11/2013	NVI	N	Y	Y	Y	140
8	JACOBABAD	THUL	SD/53/13/017	M	10	6/26/2013	7+	7/26/2013	7/27/2013	EV	Y	Y	Y	Y	253
9	JAMSHORO	SEHWAN	SD/25/13/020	F	12	11/2/2013	7+	11/20/2013	11/21/2013	NVI	Y	Y	Y	Y	124
10	KAMBAR	MIRO KHAN	SD/55/13/023	M	24	9/26/2013	7+	10/29/2013	10/30/2013		N	Y	Y	Y	161
11	KASHMORE	KANDHKOT	SD/54/13/002	M	54	5/27/2013	7+	Late Notified			N	N	Y	LOST	283
12	KHAIRPUR	GAMBAT	SD/43/13/049	F	48	10/14/2013	7+	11/5/2013	11/9/2013	NVI	Y	N	Y	DIED	143
13	KHIBALDIA	BALDIA	SD/61/13/005	F	36	6/18/2013	4	Late Notified			N	N	Y	DIED	261
14	KHIBALDIA	BALDIA	SD/61/13/010	M	16	10/10/2013	7+	10/24/2013	10/26/2013	EV	Y	Y	Y	Y	147
15	KHIBINQASIM	BINQASIM	SD/62/13/012	M	96	9/19/2013	7+	11/17/2013	11/18/2013	NVI	Y	N	Y	Y	168
16	KHIGADAP	GADAP	SD/63/13/010	F	42	6/2/2013	7+	Late Notified			Y	N	Y	DIED	277
17	KHIGADAP	GADAP	SD/63/13/021	F	10	8/23/2013	1	9/23/2013	9/24/2013	NVI	Y	Y	Y	Y	195
18	KHIGADAP	GADAP	SD/63/13/031	M	14	7/15/2013	7+	Child Died Before Stool Collection			Y	Y	Y	Y	234
19	KHIGADAP	GADAP	SD/63/13/034	F	48	11/18/2013	7+				Y	N	Y	Y	Y
20	KHIJAMSHEED	JAMSHEED	SD/66/13/004	F	60	5/1/2013	7+				Y	N	Y	DIED	309
21	KHIKAMARI	KAMARI	SD/67/13/005	M	108	6/25/2013	7+	7/7/2013	7/15/2013	NVI	Y	Y	Y	Y	254
22	KHISADDAR	SADDAR	SD/77/13/004	F	38	4/5/2013	7+	5/10/2013	5/11/2013	NVI	N	N	Y	Y	335
23	NFEROZ	BHIRIA	SD/45/13/003	F	144	2/5/2013	7+	Child Died Before Stool Collection			Y	Y	Y	DIED	394
24	NFEROZ	MORO	SD/45/13/013	F	54	5/10/2013	7+	6/1/2013	6/2/2013	NVI	N	Y	Y	Y	300
25	SANGHAR	KHIPRO	SD/32/13/024	F	60	9/15/2013	7+	10/1/2013	10/2/2013	NVI	Y	Y	Y	Y	172
26	SANGHAR	SANGHAR	SD/32/13/029	M	45	12/2/2013	7+	12/9/2013		NVI	Y	N	Y	DIED	94
27	THARPARKAR	MITHI	SD/33/13/021	M	36	9/21/2013	7+	10/14/2013	10/15/2013	NVI	Y	N	N	Y	166
28	THATTA	THATTA	SD/22/13/032	M	72	6/6/2013	7+	7/15/2013	7/16/2013	NVI	Y	Y	Y	Y	273
29	THATTA	JATI	SD/22/13/049	M	9	11/17/2013	5	Child Died Before Stool Collection			Y	N	Y	DIED	109
30	ABOTABAD	HAVALIAN	KP/10/13/017	M	96	7/23/2013	7+	8/14/2013	8/15/2013	NVI	Y	N	Y	Y	226
31	ABOTABAD	ABBOTABAD	KP/10/13/021	M	49	7/27/2013	7+	8/16/2013	8/17/2013	EV	N	N	N		222
32	ABOTABAD	ABBOTABAD	KP/10/13/025	F	14	10/15/2013	7+	11/3/2013	11/4/2013	NVI	N	N	Y	Y	142
33	ABOTABAD	HAVALIAN	KP/10/13/027	F	72	8/18/2013	7+	Late Notified			N	Y	Y	Y	200
34	ABOTABAD	ABBOTABAD	KP/10/13/029	F	144	10/18/2013	0	11/8/2013	11/15/2013	NVI	Y	Y	Y	Y	139
35	BANNU	BANNU	KP/61/13/010	M	53	4/30/2013	7+	Late Notified			Y	N	N	Y	310
36	BUNIR	DAGGAR	KP/22/13/008	M	35	3/12/2013	7+	4/1/2013	4/2/2013	NVI	Y	Y	Y	Y	359
37	BUNIR	DAGGAR	KP/22/13/007	M	132	2/28/2013	7+	3/30/2013	3/31/2013	NVI	N	N	Y	Y	371
38	BUNIR	DAGGAR	KP/22/13/015	M	72	1/1/2013	7+	Late Notified			Y	Y	Y	Y	429
39	BUNIR	DAGGAR	KP/22/13/044	M	16	8/9/2013	0				Y	N	N	Y	Y
40	CHARSADA	CHARSADA	KP/31/13/072	F	30	10/25/2013	7+	12/19/2013	12/20/2013	NVI	Y	Y	Y		132
41	CHARSADA	TANGI	KP/31/13/069	F	15	11/19/2013	7+	12/7/2013	12/8/2013	NVI	N	Y	Y		107
42	DIKHAN	KULACHI	KP/60/13/013	F	18	4/22/2013	5	6/16/2013	6/17/2013	VACC	N	Y	Y	Y	318
43	DIKHAN	DIKHAN	KP/60/13/014	M	54	6/17/2013	7+	6/20/2013		NVI	Y	Y	Y	DIED	262
44	DIRLOWER	SAMAR BAGH	KP/23/13/015	F	13	1/30/2013	7+	Late Notified			Y	Y	Y	Y	400

€ Based on recall of parents

* Afp.rec Data as of 06-03-2014

60 days Follow-up not done

FUP = Residual Weakness at 60 days follow up.

Table 7.1: AFP CASES PENDING FOR CLASSIFICATION WITH DATE OF ONSET MORE THAN 90 DAYS* 2013 (2/4)

S. No	DISTRICT	TEHSIL	EPID	SEX	AGE	DONSET	DOSE€	DSTOOL1	DSTOOL2	LAB	FEVER	ASYM	PROG	FUP	PEND (DAYS)
45	DIRLOWER	SAMAR BAGH	KP/23/13/033	F	96	7/25/2013	7+	9/5/2013	9/7/2013	NVI	Y	Y	Y	Y	224
46	DIRLOWER	TIMERGARA	KP/23/13/034	M	30	8/8/2013	7+	9/16/2013	9/17/2013	NVI	Y	Y	Y	Y	210
47	DIRLOWER	TIMERGARA	KP/23/13/038	M	1	10/10/2013	1	11/15/2013	11/16/2013	NVI	Y	Y	Y	Y	147
48	DIRLOWER	TIMERGARA	KP/23/13/042	F	33	11/30/2013	7+	12/25/2013	12/26/2013	EV	N	N	N		96
49	DIRUPPER	DIR	KP/25/13/006	F	21	7/25/2013	7+	8/8/2013	8/10/2013	EV	UK	Y	Y	Y	224
50	HANGU	HANGU	KP/54/13/004	F	30	6/5/2013	7+	7/5/2013	7/6/2013	EV	Y	N	Y	Y	274
51	HANGU	HANGU	KP/54/13/014	F	8	10/28/2013	7+	11/26/2013	11/28/2013	NVI	Y	N	Y		129
52	HARIPUR	HARIPUR	KP/12/13/005	M	66	1/18/2013	7+	2/19/2013	2/20/2013	EV	N	N	Y	Y	412
53	HARIPUR	HARIPUR	KP/12/13/012	F	20	4/18/2013	7+	5/19/2013	5/20/2013	EV	Y	Y	Y	Y	322
54	HARIPUR	HARIPUR	KP/12/13/024	F	48	10/6/2013	7+	10/29/2013	10/30/2013	NVI	Y	N	Y	Y	151
55	KARAK	TAKHT E NASRATI	KP/51/13/017	M	21	9/9/2013	7+	9/24/2013	9/26/2013	NVI	Y	Y	Y	Y	178
56	KOHAT	LACHI	KP/50/13/012	M	96	5/28/2013	7+	6/26/2013	6/27/2013	NVI	N	N	Y	Y	282
57	KOHAT	LACHI	KP/50/13/015	M	21	5/15/2013	7+	Late Notified			Y	Y	Y	Y	295
58	KOHAT	KOHAT	KP/50/13/027	M	84	11/6/2013	7+	11/28/2013		NVI	N	N	Y		120
59	LAKKIMRWT	LAKKIMRWT	KP/62/13/018	M	26	5/22/2013	7+	6/21/2013	6/22/2013		N	Y	Y	Y	288
60	LAKKIMRWT	LAKKIMRWT	KP/62/13/030	F	28	9/11/2013	7+	10/1/2013	10/3/2013	NVI	N	N	Y	Y	176
61	LAKKIMRWT	LAKKIMRWT	KP/62/13/038	F	96	10/5/2013	3	10/26/2013	10/27/2013	NVI	Y	Y	Y	Y	152
62	LAKKIMRWT	LAKKIMRWT	KP/62/13/057	F	14	11/28/2013	7+	1/8/2014	1/9/2014	EV	Y	Y	N		98
63	MANSEHRA	MANSEHRA	KP/14/13/005	M	168	3/17/2013	7+	Late Notified			N	N	Y	DIED	354
64	MANSEHRA	MANSEHRA	KP/14/13/010	F	9	6/1/2013	6	6/17/2013	6/19/2013	NVI	Y	N	Y	DIED	278
65	MANSEHRA	MANSEHRA	KP/14/13/019	F	24	7/13/2013	7+	Late Notified			UK	UK	Y	DIED	236
66	MANSEHRA	OGHI	KP/14/13/038	M	26	11/8/2013	7+	11/28/2013	12/2/2013	NVI	Y	Y	N		118
67	MANSEHRA	MANSEHRA	KP/14/13/041	F	4	12/3/2013	6	12/16/2013	12/18/2013	NVI	Y	N	Y		93
68	MANSEHRA	MANSEHRA	KP/14/13/026	M	84	8/31/2013	7+	9/16/2013	9/17/2013	NVI	Y	N	Y	DIED	187
69	MARDAN	TAKHT BHAI	KP/40/13/034	M	5	3/10/2013	6	Late Notified			N	Y	UK	Y	361
70	MARDAN	MARDAN	KP/40/13/059	F	24	7/25/2013	7+	8/21/2013	8/22/2013	NVI	Y	Y	Y	Y	224
71	MARDAN	MARDAN	KP/40/13/063	M	108	8/15/2013	7+	8/29/2013	8/31/2013	NVI	Y	Y	Y	Y	203
72	MARDAN	MARDAN	KP/40/13/046	F	24	6/15/2013	7+	7/5/2013	7/6/2013	EV	Y	Y	Y	Y	264
73	MARDAN	MARDAN	KP/40/13/074	F	24	8/2/2013	7+	9/11/2013	9/13/2013	NVI	N	Y	Y	Y	216
74	MARDAN	MARDAN	KP/40/13/077	F	32	9/2/2013	7+	9/24/2013	9/25/2013	NVI	Y	Y	Y	Y	185
75	MARDAN	MARDAN	KP/40/13/073	M	23	6/15/2013	7+	Late Notified			UK	Y	UK	Y	264
76	MARDAN	MARDAN	KP/40/13/095	F	60	10/13/2013	7+	11/16/2013	11/17/2013	NVI	N	N	Y	Y	144
77	NOWSHERA	NOWSHERA	KP/32/13/012	F	108	3/15/2013	7+	Late Notified			Y	N	Y	DIED	356
78	NOWSHERA	NOWSHERA	KP/32/13/029	M	14	7/28/2013	7+	8/17/2013	8/18/2013	EV	Y	Y	Y		221
79	NOWSHERA	NOWSHERA	KP/32/13/036	F	30	8/3/2013	7+	9/25/2013	9/26/2013	NVI	Y	Y	Y		215
80	NOWSHERA	NOWSHERA	KP/32/13/031	M	25	7/25/2013	7+	8/21/2013	8/22/2013	EV	Y	Y	Y		224
81	PESHAWAR	PESHAWAR	KP/30/13/022	F	22	2/6/2013	7+	Late Notified			N	N	N	Y	393
82	PESHAWAR	PESHAWAR	KP/30/13/026	M	24	4/17/2013	0	5/17/2013	5/19/2013	EV	Y	Y	Y	Y	323
83	PESHAWAR	PESHAWAR	KP/30/13/039	F	54	5/3/2013	7+	6/14/2013	6/15/2013	EV	Y	Y	Y	Y	307
84	PESHAWAR	PESHAWAR	KP/30/13/043	F	66	6/16/2013	7+	7/7/2013	7/8/2013	NVI	Y	Y	Y	Y	263
85	PESHAWAR	PESHAWAR	KP/30/13/052	M	36	7/13/2013	7+	7/27/2013	7/28/2013	EV	N	Y	Y	Y	236
86	PESHAWAR	PESHAWAR	KP/30/13/063	M	14	8/16/2013	7+	8/30/2013	9/1/2013	VACC	Y	N	Y	LOST	202
87	PESHAWAR	PESHAWAR	KP/30/13/069	M	84	8/29/2013	7+	9/13/2013	9/14/2013	NVI	Y	Y	Y	DIED	189
88	PESHAWAR	PESHAWAR	KP/30/13/057	F	21	7/14/2013	7+	8/16/2013	8/17/2013	EV	Y	Y	Y	Y	235

€ Based on recall of parents

* Afp.rec Data as of 06-03-2014

60 days Follow-up not done

FUP = Residual Weakness at 60 days follow up.

Table 7.2: AFP CASES PENDING FOR CLASSIFICATION WITH DATE OF ONSET MORE THAN 90 DAYS* 2013 (3/4)

S. No	DISTRICT	TEHSIL	EPID	SEX	AGE	DONSET	DOSE€	DSTOOL1	DSTOOL2	LAB	FEVER	ASYM	PROG	FUP	PEND (DAYS)
89	PESHAWAR	PESHAWAR	KP/30/13/076	F	24	8/28/2013	7+	10/2/2013	10/10/2013	NVI	Y	N	UK	Y	190
90	PESHAWAR	PESHAWAR	KP/30/13/097	F	9	10/2/2013	0	11/19/2013	11/20/2013	EV	Y	Y	Y	Y	155
91	PESHAWAR	PESHAWAR	KP/30/13/094	F	96	10/11/2013	7+	11/17/2013	11/19/2013	NVI	Y	Y	Y	Y	146
92	PESHAWAR	PESHAWAR	KP/30/13/096	M	7	10/8/2013	3	11/18/2013	11/19/2013	NVI	Y	Y	Y	Y	149
93	PESHAWAR	PESHAWAR	KP/30/13/056	F	24	7/14/2013	7+	8/6/2013	8/7/2013	NVI	N	N	Y	Y	235
94	PESHAWAR	PESHAWAR	KP/30/13/059	M	86	6/13/2013	7+	Late Notified			Y	Y	Y	Y	266
95	PESHAWAR	PESHAWAR	KP/30/13/106	M	25	10/5/2013	7+	11/29/2013	11/30/2013	EV	N	Y	Y	Y	152
96	PESHAWAR	PESHAWAR	KP/30/13/095	F	23	10/25/2013	7+	11/14/2013	11/16/2013	NVI	N	N	Y	DIED	132
97	PESHAWAR	PESHAWAR	KP/30/13/098	F	26	11/1/2013	7+	11/20/2013	11/21/2013	NVI	Y	N	Y	Y	125
98	PESHAWAR	PESHAWAR	KP/30/13/114	M	14	10/15/2013	7+	Late Notified			N	Y	Y	Y	142
99	PESHAWAR	PESHAWAR	KP/30/13/115	M	21	11/20/2013	7+	12/19/2013	12/20/2013	NVI	Y	Y	Y	Y	106
100	PESHAWAR	PESHAWAR	KP/30/13/102	F	12	11/16/2013	3	12/5/2013	12/6/2013	VACC	Y	Y	Y		110
101	PESHAWAR	PESHAWAR	KP/30/13/111	F	46	11/8/2013	7+	12/15/2013	12/16/2013	NVI	Y	Y	Y	Y	118
102	PESHAWAR	PESHAWAR	KP/30/13/122	M	12	12/1/2013	7+	1/15/2014	1/16/2014	EV	Y	Y	Y	Y	95
103	PESHAWAR	PESHAWAR	KP/30/13/125	F	12	11/23/2013	7+	Late Notified			Y	Y	Y	Y	103
104	SHANGLA	MARTOONG	KP/26/13/001	M	72	1/8/2013	7+	Late Notified			Y	Y	Y	LOST	422
105	SHANGLA	CHAKISAR	KP/26/13/008	F	36	6/1/2013	7+	6/27/2013	7/31/2013	NVI	Y	Y	Y	Y	278
106	SWABI	SWABI	KP/41/13/035	M	36	9/15/2013	7+	Late Notified			Y	Y	Y		172
107	SWABI	LAHORE	KP/41/13/048	M	17	10/23/2013	7+	11/24/2013	11/25/2013	EV	N	Y	Y		134
108	SWAT	SWAT	KP/24/13/006	F	132	4/2/2013	7+	4/10/2013		NVI	N	N	Y	DIED	338
109	SWAT	SWAT	KP/24/13/009	M	16	4/19/2013	7+	5/14/2013	5/15/2013	NVI	Y	N	N	Y	321
110	SWAT	SWAT	KP/24/13/025	M	96	11/1/2013	3	Late Notified			Y	N	Y		125
111	SWAT	SWAT	KP/24/13/024	M	6	10/24/2013	5	11/7/2013	11/8/2013	NVI	N	Y	UK		133
112	TANK	TANK	KP/63/13/005	M	42	2/25/2013	7+	4/27/2013	4/28/2013	NVI	Y	N	UK	Y	374
113	TANK	TANK	KP/63/13/009	M	13	8/2/2013	7+	9/6/2013	9/7/2013	NVI	N	N	Y	Y	216
114	TANK	TANK	KP/63/13/010	M	24	8/11/2013	7+	9/24/2013	9/25/2013	NVI	Y	Y	Y	Y	207
115	BARKHAN	BARKHAN	BN/23/13/003	F	84	11/20/2013	0	Late Notified			Y	Y	Y	Y	106
116	DBUGTI	DERA BUGTI	BN/35/13/004	M	60	11/22/2013	7+	12/6/2013	12/10/2013	NVI	N	N	N		104
117	JAFARABAD	SOHBAT PUR	BN/43/13/015	F	30	7/18/2013	7+	8/30/2013	8/31/2013	EV	Y	Y	Y	Y	231
118	NSIRABAD	DMJAMALI	BN/41/13/010	M	18	9/8/2013	7+	Late Notified			Y	N	Y	DIED	179
119	QUETTA	QUETTA CITY	BN/11/13/028	F	13	11/18/2013	7+	Late Notified			Y	Y	Y	Y	108
120	ZIARAT	ZIARAT	BN/32/13/003	M	13	9/16/2013	3	10/8/2013	10/9/2013	NVI	Y	Y	Y		171
121	GHIZER	PUNIAL	GB/41/13/001	M	66	9/2/2013	7+	9/6/2013		EV	N	Y	Y	DIED	185
122	BAJOUR	MAMUND	FT/33/13/007	M	45	1/2/2013	7+	Late Notified			N	Y	Y	Y	428
123	BAJOUR	KHAR	FT/33/13/018	M	22	7/8/2013	7+	8/23/2013	8/24/2013	NVI	Y	Y	Y		241
124	BAJOUR	MAMUND	FT/33/13/017	F	44	7/9/2013	7+	8/13/2013	8/14/2013	EV	Y	N	N		240
125	BAJOUR	KHAR	FT/33/13/020	F	12	8/7/2013	7+	9/7/2013	9/8/2013	EV	Y	Y	N		211
126	BAJOUR	MAMUND	FT/33/13/022	M	17	7/28/2013	7+	9/12/2013	9/13/2013	NVI	N	Y	N		221
127	BAJOUR	KHAR	FT/33/13/023	F	48	8/15/2013	7+	9/15/2013	9/16/2013	EV	N	N	Y		203
128	BAJOUR	KHAR	FT/33/13/024	M	36	8/18/2013	7+	9/16/2013	9/17/2013	NVI	Y	Y	Y		200
129	BAJOUR	MAMUND	FT/33/13/032	M	18	9/4/2013	7+	10/5/2013	10/6/2013	VACC	Y	Y	N		183
130	BAJOUR	SALARZAI	FT/33/13/042	F	84	11/12/2013	7+	Late Notified			Y	N	Y		114
131	BAJOUR	NAWAGAI	FT/33/13/040	F	48	9/30/2013	7+	11/25/2013	11/26/2013	VACC	Y	Y	N		157
132	FR BANNU	FR BANNU	FT/69/13/007	M	22	7/30/2013	3	8/28/2013	8/29/2013	EV	Y	Y	Y		219

€ Based on recall of parents

* Afp.rec Data as of 06-03-2014

60 days Follow-up not done

FUP = Residual Weakness at 60 days follow up.

Table 7.3: AFP CASES PENDING FOR CLASSIFICATION WITH DATE OF ONSET MORE THAN 90 DAYS* 2013 (4/4)

S. No	DISTRICT	TEHSIL	EPID	SEX	AGE	DONSET	DOSE€	DSTOOL1	DSTOOL2	LAB	FEVER	ASYM	PROG	FUP	PEND (DAYS)
133	FR BANNU	FR BANNU	FT/69/13/012	M	9	8/10/2013	0	9/22/2013	9/23/2013	EV	Y	Y	Y		208
134	FR BANNU	FR BANNU	FT/69/13/021	M	12	9/28/2013	0	10/30/2013	10/31/2013	NVI	Y	Y	Y		159
135	KHYBER	JAMRUD	FT/34/13/002	F	24	1/18/2013	7+	2/21/2013	2/23/2013	NVI	N	Y	Y	Y	412
136	KHYBER	JAMRUD	FT/34/13/017	M	14	6/8/2013	0	6/16/2013		NVI	Y	Y	Y	Y	271
137	KHYBER	BARA	FT/34/13/016	F	10	6/6/2013	0	6/21/2013	6/23/2013	NVI	Y	Y	Y		273
138	KHYBER	BARA	FT/34/13/018	M	12	6/11/2013	0	7/1/2013	7/2/2013	EV	Y	Y	Y		268
139	KHYBER	BARA	FT/34/13/021	F	18	7/13/2013	0	7/25/2013	7/29/2013	NVI	N	N	Y		236
140	KHYBER	BARA	FT/34/13/037	M	13	9/26/2013	0	10/11/2013	10/12/2013	NVI	Y	Y	Y		161
141	KHYBER	LANDI KOTAL	FT/34/13/039	M	18	10/9/2013	7+				Y	N	Y		148
142	KHYBER	BARA	FT/34/13/043	F	36	10/17/2013	1	11/8/2013	11/9/2013	EV	Y	Y	Y		140
143	KHYBER	LANDI KOTAL	FT/34/13/044	M	44	6/30/2013	7+				Y	Y	Y	Y	249
144	KHYBER	LANDI KOTAL	FT/34/13/048	M	12	9/25/2013	7+				Y	Y	Y	Y	162
145	KHYBER	LANDI KOTAL	FT/34/13/049	M	11	10/25/2013	3	12/11/2013	12/12/2013	EV	N	N	Y		132
146	KHYBER	LANDI KOTAL	FT/34/13/050	M	65	11/22/2013	7+	12/16/2013	12/18/2013	NVI	N	N	Y		104
147	KHYBER	BARA	FT/34/13/052	F	60	11/20/2013	0	12/21/2013	12/22/2013	NVI	UK	Y	Y		106
148	MOHMAND	UPPER MOHMAND	FT/35/13/003	F	18	4/18/2013	7+	5/7/2013	5/8/2013	NVI	Y	Y	Y	Y	322
149	MOHMAND	UPPER MOHMAND	FT/35/13/008	M	26	5/8/2013	7+	6/22/2013	6/23/2013	EV	Y	Y	Y		302
150	WAZIR-N	MIRAN SHAH	FT/64/13/007	M	48	4/25/2013	5	5/10/2013	5/12/2013	NVI	Y	N	Y	Y	315
151	WAZIR-N	MIR ALI	FT/64/13/030	F	9	8/9/2013	0				Y	N	N		209
152	WAZIR-N	MIR ALI	FT/64/13/042	M	7	7/3/2013	0	8/29/2013	8/30/2013	EV	Y	N	Y		246
153	WAZIR-N	MIR ALI	FT/64/13/054	F	18	9/9/2013	2				Y	N	Y		178
154	WAZIR-N	MIR ALI	FT/64/13/090	M	12	9/20/2013	0	10/24/2013	10/25/2013	VACC	Y	Y	Y		167
155	WAZIR-N	MIR ALI	FT/64/13/101	F	10	10/20/2013	0	11/7/2013	11/9/2013	NVI	Y	Y	Y		137
156	WAZIR-N	RAZMAK	FT/64/13/111	F	24	10/22/2013	3	11/24/2013	11/25/2013	NVI	Y	N	Y		135
157	WAZIR-N	MIRAN SHAH	FT/64/13/122	F	13	9/15/2013	0				Y	Y	Y	Y	172
158	WAZIR-N	MIRAN SHAH	FT/64/13/121	M	13	8/25/2013	0				N	Y	Y	Y	193
159	WAZIR-N	MIRAN SHAH	FT/64/13/123	M	12	10/5/2013	0				Y	Y	Y	Y	152
160	WAZIR-N	MIR ALI	FT/64/13/129	M	12	11/22/2013	0	12/16/2013	12/17/2013	EV	Y	Y	Y		104
161	WAZIR-S	WANA	FT/65/13/006	F	26	7/13/2013	7+	8/15/2013	8/16/2013	NVI	Y	Y	Y		236
162	WAZIR-S	LADHA	FT/65/13/012	F	36	10/1/2013	1	10/21/2013	10/22/2013	EV	Y	Y	Y		156
163	WAZIR-S	WANA	FT/65/13/005	F	12	4/25/2013	1	6/19/2013	6/20/2013	NVI	UK	N	UK		315
164	WAZIR-S	WANA	FT/65/13/010	F	23	9/21/2013	5	9/27/2013		NVI	Y	N	UK		166

€ Based on recall of parents
* Afp.rec Data as of 06-03-2014

60 days Follow-up not done

FUP = Residual Weakness at 60 days follow up.