



**World Health
Organization**

Weekly AFP Surveillance Update Pakistan

Week 8 (*Ended on 22nd February, 2014*)

AFP Surveillance



National Surveillance Cell Federal EPI

World Health Organization Country Office,
Chak Shahzad, Park Road,
Islamabad, Pakistan

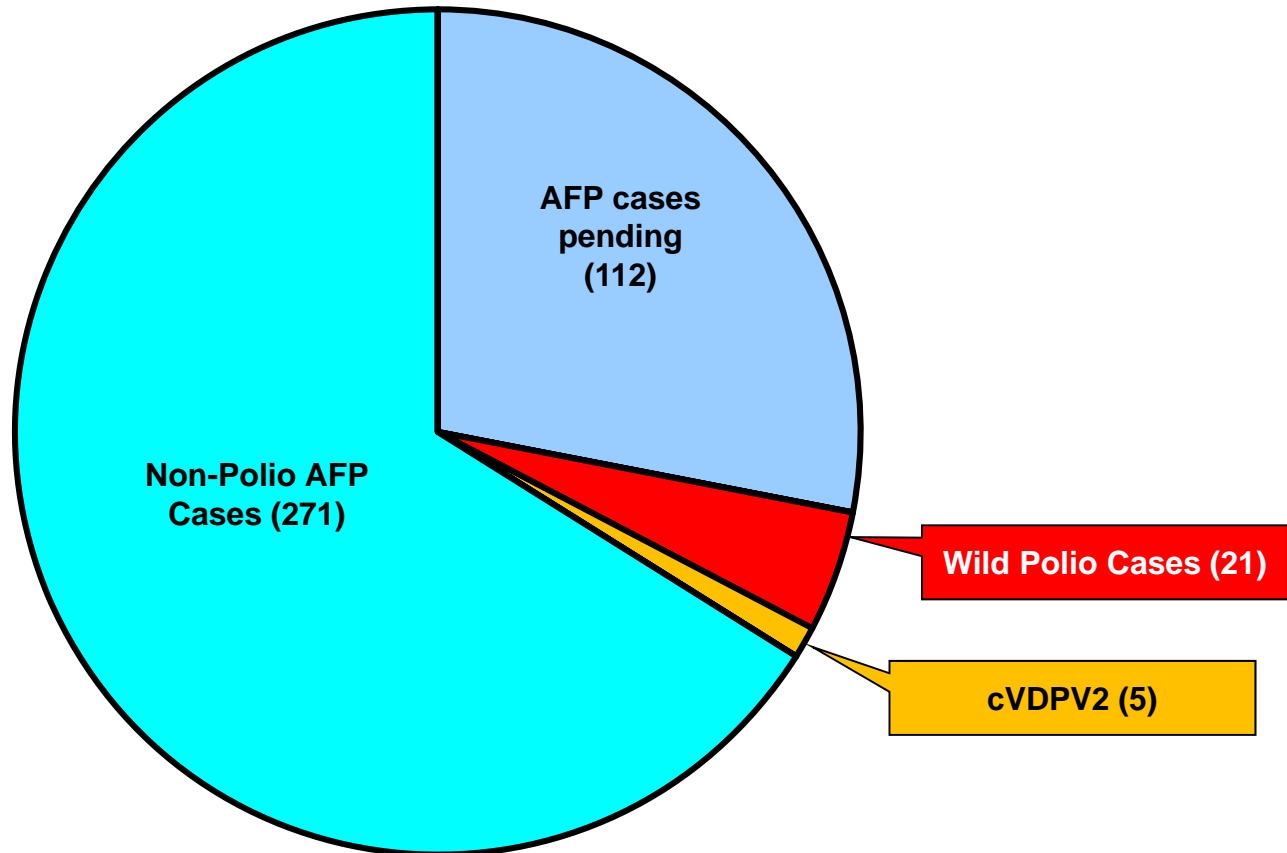
Tel: +92-51 9255123 / 9255282 /9255184

Fax: +92-51 9255274

Email: epidata@pak.emro.who.int

Web site: www.who.gov.pk

AFP Case Profile, 2014*



Total AFP Cases Reported = 409

**^3 Inadequate cases pending classification by ERC;
^14 Inadequate cases not due for FUP
^95 Pending in the Lab**

* Afp.rec Data as of 20-02-2014

Point in Time Comparison of polio cases by province/region 2013 & 2014*

Region/ Province	No. of polio cases		No. of infected districts/towns		Last polio case
	2013	2014	2013	2014	
Khyber Pakhtunkhwa	3	3	3	2	10-Feb -14
FATA / FR Areas	0	18	0	2	08-Feb -14
Sindh	1	0	1	0	31-Dec-13
Balochistan	0	0	0	0	02-Oct-12
Punjab	1	0	1	0	12-Dec-13
Pakistan	5	21	5	4	10-Feb-14

Three additional districts/town declared infected based on environmental samples in 2014

* Afp.rec Data as of 20-02-2014

Table 1: List of Confirmed Polio Cases, Pakistan 2014* (1/1)

S.NO.	PROVINCE/ REGION	DISTRICT	TEHSIL	EPID NO.	SEX	AGE (m)	DATE OF ONSET PARALYSIS	NO. OPV DOSES (based on parents recall)		FEVER	Asymmetric Paralysis	Rapid Progression	REFUSAL	W/PV TYPE	GENETICS
								Route	SIA's						Cluster
1	FATA	WAZIR-N\$	MIR ALI	FT/64/14/006	F	19	03-Jan-14	0	0	Y	Y	Y	N	NSL1	R4B
2	FATA	WAZIR-N\$	MIR ALI	FT/64/14/003	M	14	03-Jan-14	0	0	Y	Y	Y	N	NSL1	R4B
3	FATA	WAZIR-N\$	MIR ALI	FT/64/14/007	F	8	04-Jan-14	0	0	Y	Y	Y	N	NSL1	R4B
4	FATA	WAZIR-N\$	MIRAN SHAH	FT/64/14/004	F	13	04-Jan-14	0	0	Y	Y	Y	N	NSL1	R4B
5	FATA	WAZIR-N\$	MIRAN SHAH	FT/64/14/005	F	17	05-Jan-14	0	0	Y	Y	Y	N	NSL1	R4B
6	FATA	WAZIR-N\$	MIRAN SHAH	FT/64/14/011	F	12	10-Jan-14	0	0	Y	Y	Y	N	NSL1	R4B
7	FATA	WAZIR-N\$	MIR ALI	FT/64/14/012	M	23	16-Jan-14	0	0	Y	Y	Y	N	NSL1	R4B
8	FATA	WAZIR-N\$	MIRAN SHAH	FT/64/14/016	M	10	17-Jan-14	0	0	Y	Y	Y	N	NSL1	R4B
9	FATA	WAZIR-N\$	MIRAN SHAH	FT/64/14/021	M	16	25-Jan-14	0	0	Y	Y	Y	N	NSL1	R4B
10	FATA	WAZIR-N\$	MIR ALI	FT/64/14/018	M	12	11-Jan-14	0	0	Y	Y	Y	N	NSL1	R4B
11	FATA	WAZIR-N\$	MIRAN SHAH	FT/64/14/017	M	17	22-Jan-14	0	0	Y	Y	Y	N	NSL1	R4B
12	KPAKHTUNKHWA	BANNU	BANNU	KP/61/14/001	M	39	26-Jan-14	0	10^	Y	N	Y	N	NSL1	R4B
13	FATA	WAZIR-N\$	MIR ALI	FT/64/14/024	M	18	28-Jan-14	0	0	Y	Y	Y	N	NSL1	R4B
14	KPAKHTUNKHWA	PESHAWAR	PESHAWAR	KP/30/14/008	M	6	31-Jan-14	3	3	Y	Y	Y	N	NSL1	R4B
15	FATA	KHYBER\$	BARA	FT/34/14/003	F	13	12-Jan-14	0	0	Y	Y	Y	N	NSL1	R4B
16	FATA	WAZIR-N\$	MIRAN SHAH	FT/64/14/019	F	18	24-Jan-14	0	0	Y	Y	Y	N	NSL1	R4B
17	FATA	WAZIR-N\$	MIRAN SHAH	FT/64/14/022	F	11	29-Jan-14	0	0	Y	Y	Y	N	NSL1	R4B
18	FATA	WAZIR-N\$	MIRAN SHAH	FT/64/14/028	M	18	05-Feb-14	0	0	Y	Y	Y	N	NSL1	
19	FATA	WAZIR-N\$	MIRAN SHAH	FT/64/14/032	M	18	08-Feb-14	0	0	Y	Y	Y	N	NSL1	
20	FATA	WAZIR-N\$	MIRAN SHAH	FT/64/14/027	M	12	08-Feb-14	0	0	Y	Y	Y	N	NSL1	
21	KPAKHTUNKHWA	PESHAWAR	PESHAWAR	KP/30/14/012	M	18	10-Feb-14	3	3	Y	Y	Y	N	NSL1	

\$ Security compromised area

New Case

^Under investigation

* Afp.rec Data as of 20-02-2014

Table 2: LAB Update 2013*

Month of Onset	AFP Cases	No virus isolated	Cases Under Process		Isolated Viruses from stools						
			Culture	ITD	Vaccine viruses		NPEV		Wild	Results within 14 days	
	n	n	n	n	n	%	n	%	n	n	%
January	333	275	0	0	19	6	37	11%	2	333	100%
February	330	285	0	0	16	5	26	8%	3	330	100%
March	308	248	0	0	7	2	52	17%	1	308	100%
April	352	244	0	0	22	6	84	24%	2	352	100%
May	419	304	0	0	15	4	91	22%	9	419	100%
June	469	326	0	0	21	4	118	25%	4	469	100%
July	391	239	0	0	13	3	135	35%	4	391	100%
August	458	292	0	0	23	5	135	29%	8	458	100%
September	466	297	0	0	32	7	119	26%	19	467	100%
October	407	307	0	0	25	6	63	15%	14	409	100%
November	373	272	0	0	27	7	65	17%	10	374	100%
December	363	276	2	0	17	5	53	15%	17	363	100%
Pakistan	4669	3365	2	0	237	5	978	21%	93	4673	100%
2014											
January	371	262	3	0	23	6	66	18%	17	368	99%
February	141	46	86	0	0	0	5	4%	4	55	39%
Pakistan	512	308	89	0	23	5	71	14%	21	423	83%

* Data as of 24-02-2014

Table 3: Urgent / ITD Pending Cases (1/1)

S. #	District	Tehsil	Basic information							OPV doses				Urgent		Prov Diagnosis	Lab update			Remarks
			Union council	Epid number	Date of Onset	Age (M)	Sex	Date of 1st stool	Stool Adeq	RI	SIA _s	Last 6 SIA _s	Last dose	By Field	By NSC _z		Lab No.	Days Inoc	Culture update	
Isolates pending for ITSD																				
1	BAJOUR	SALARZAI	TALL	FT/33/14/004	04-Feb-14	30	F	06-Feb-14	Y	0	7+	6	21-Jan-14	N		MENINGITIS	496	9	L20B+	
2	FR BANNU	#		FT/69/14/005	09-Feb-14	14	M	13-Feb-14		#	#	#	07-Feb-14	N		#	591	2	L20B+	
3	WAZIR-N	RAZMAK	SHAKIMAR	FT/64/14/025	03-Feb-14	12	F	08-Feb-14	Y	0	0	0		Y	Y	POLIO	531	4	P2	Discordant U
4	WAZIR-N *	#		FT/64/14/033	08-Feb-14	14	M	13-Feb-14		#	#			N		#	617	5	L20B+	
5	WAZIR-N *	MIRAN SHAH	#	FT/64/14/034	09-Feb-14	18	F	13-Feb-14	#	#	#			Y	#		618	5	L20B+	
6	KOHISTAN *	#		KP/13/14/002-C1		48	M	15-Feb-14		-	-		21-Jan-14	N	-	-	575	7	L20B+	
7	HAFIZABAD *	HAFIZABAD	DHERANKAY	PB/22/14/003	05-Feb-14	4	M	15-Feb-14	Y	2	2	2	21-Jan-14	N	Y	MYOSITIS	596	5	L20B+	
8	LAHORE	GULBERG TOWN	131	PB/31/14/013	03-Feb-14	4	M	11-Feb-14	Y	3	3	3	20-Jan-14	N	N	SEPTIC ARTHRITIS	582	4	L20B+	
Reported urgent (by field / NSC_z criteria)																				
9	KABDULAH	CHAMAN	COLLEGE ROAD	BN/14/14/002	01-Feb-14	5	M	14-Feb-14	Y	0	6	5	23-Jan-14	N	Y	LEFT LEG WEAKNESS	566	8	UP	
10	WAZIR-N	#	#	FT/64/14/031	08-Feb-14	60	F	12-Feb-14	#	#	#			Y	N		590	6	UP	
11	KOHISTAN *	#		KP/13/14/002	06-Feb-14	30	F	15-Feb-14		#	#		21-Jan-14	N		#	574	8	UP	
12	MULTAN	JALALPUR PIRWALA	DURRAB PUR	PB/61/14/016	04-Feb-14	4	F	13-Feb-14	Y	3	3	3	22-Jan-14	N	Y	MUSCULAR DISTRPHY	602	6	UP	
13	SIALKOT	PASRUR	CHAHOOR	PB/25/14/009	05-Feb-14	13	M	13-Feb-14	Y	3	3	3	21-Jan-14	N	Y	TRAUMATIC NEURITIS	578	8	UP	
14	KHIBALDIA	KHIBALDIA	2 (ITTEHAD	SD/61/14/002	10-Feb-14	24	F	14-Feb-14	Y	0	0	0		Y	Y	POLIO/GBS	592	6	UP	

* New addition § New results #Data not available Y NSC Criteria = Fever , Rapid Progress, Age < 48 months and OPV Doses <7 UP = Under process
Urgent (Field/NSC) / Inadequate specimens / Age 12-35 months / Zero OPV dose UPending for genomic sequencing

* Data as of 24-02-2014

Comparison environmental sampling results 2012-13*

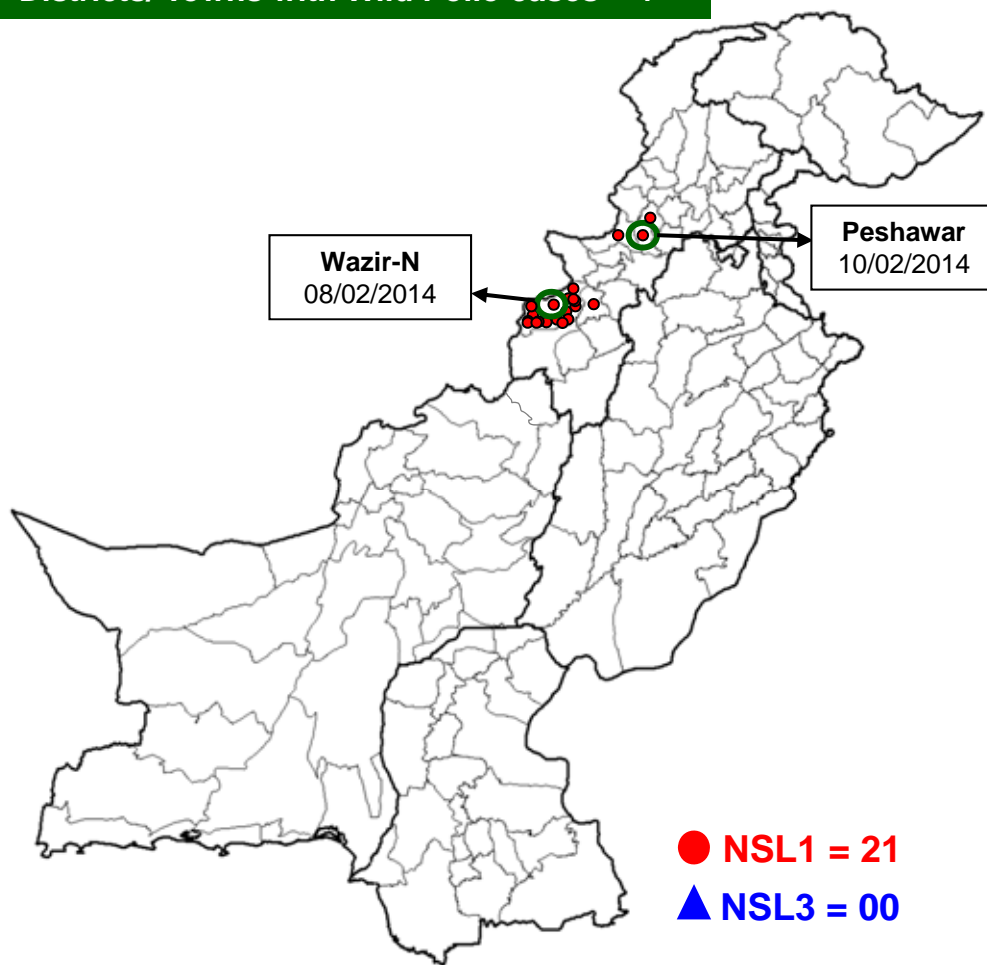
DISTRICT	2012			2013			Last
	TOTAL	WILD		TOTAL	WILD		
	n	n	%	n	n	%	
LAHORE	36	18	50%	60	4	7%	12-Dec-13
MULTAN	36	4	11%	36	2	6%	09-Dec-13
RAWALPINDI	12	7	58%	12	6	42%	25-Nov-13
FAISALABAD	8	1	13%	36	1	3%	03-Jan-13
KHIGIQBAL	24	4	17%	24	5	17%	18-Dec-13
KHIGADAP	24	16	67%	34	14	38%	20-Dec-13
KHIBALDIA	24	1	4%	24	3	8%	23-Dec-13
SUKKUR	17	7	41%	24	0	0%	05-Sep-12
HYDERABAD	6	6	100%	12	7	58%	12-Aug-13
PESHAWAR	24	20	83%	24	21	83%	27-Dec-13
QUETTA	28	4	14%	35	2	3%	28-Dec-13
PAKISTAN	239	88	37%	321	65	18%	28-Dec-13

* Data as of 20-02-2014

Data source Polio RRL

Map1: Distribution of Wild Polio cases Pakistan 2014*

Districts/ Towns with Wild Polio cases = 4



Province/ Country	Date of Last Case		Number of cases 2013	
	P1	P3	P1	P3
PUNJAB	-	Jun, 2010	-	-
SINDH	-	Jan, 2010	-	-
KHYBER- PAKHTUNKHWA	Feb, 2014	Oct, 2010	3	-
FATA	Feb, 2014	Apr, 2012	18	-
BALUCHISTAN	-	Apr, 2010	-	-
AJK	-	Jun, 2000	-	-
GILGIT-BALTISTAN	-	-	-	-
ISLAMABAD	-	Sep, 2008	-	-
PAKISTAN	Feb, 2014	Apr, 2012	21	-

○ District with last polio case in province

Cases randomly placed
in districts

— Provincial Boundary
— Districts Boundary

* Afp.rec Data as of 20-02-2014

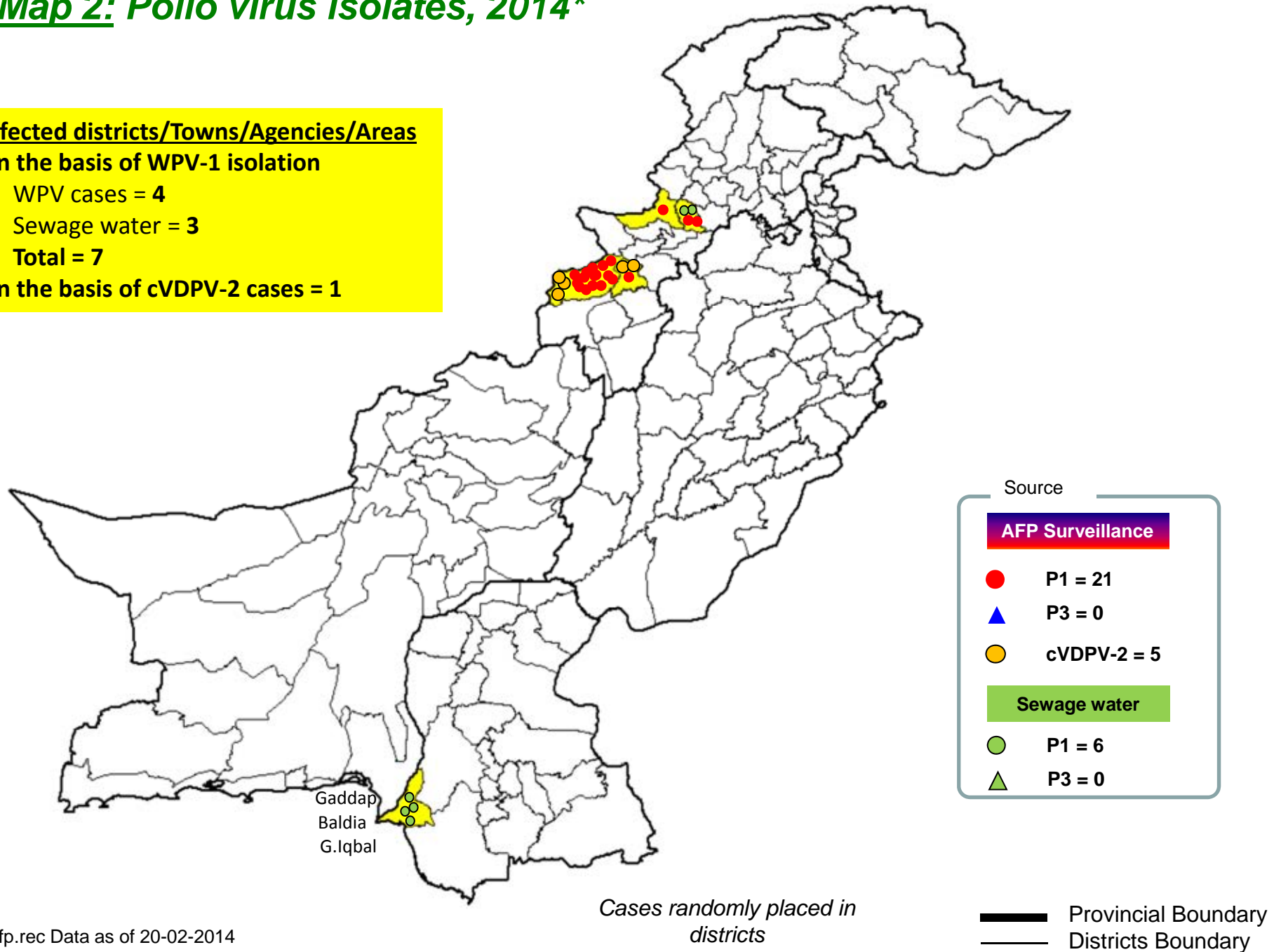
Map 2: Polio virus isolates, 2014*

Infected districts/Towns/Agencies/Areas

On the basis of WPV-1 isolation

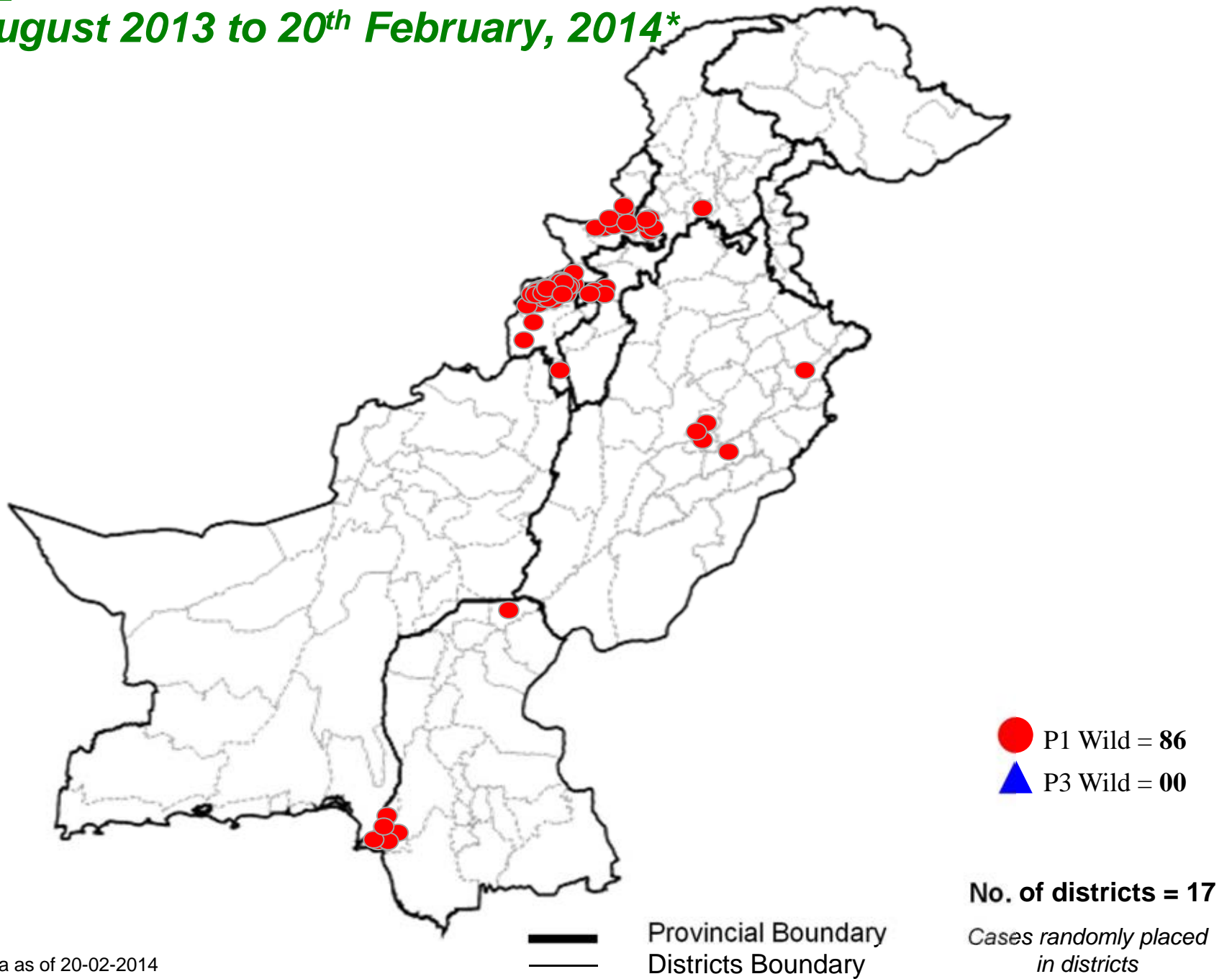
- WPV cases = 4
- Sewage water = 3
- Total = 7

On the basis of cVDPV-2 cases = 1



* Afp.rec Data as of 20-02-2014

Map 3: Wild Polio cases in the last 6 months from 21st August 2013 to 20th February, 2014*



* Afp.rec Data as of 20-02-2014

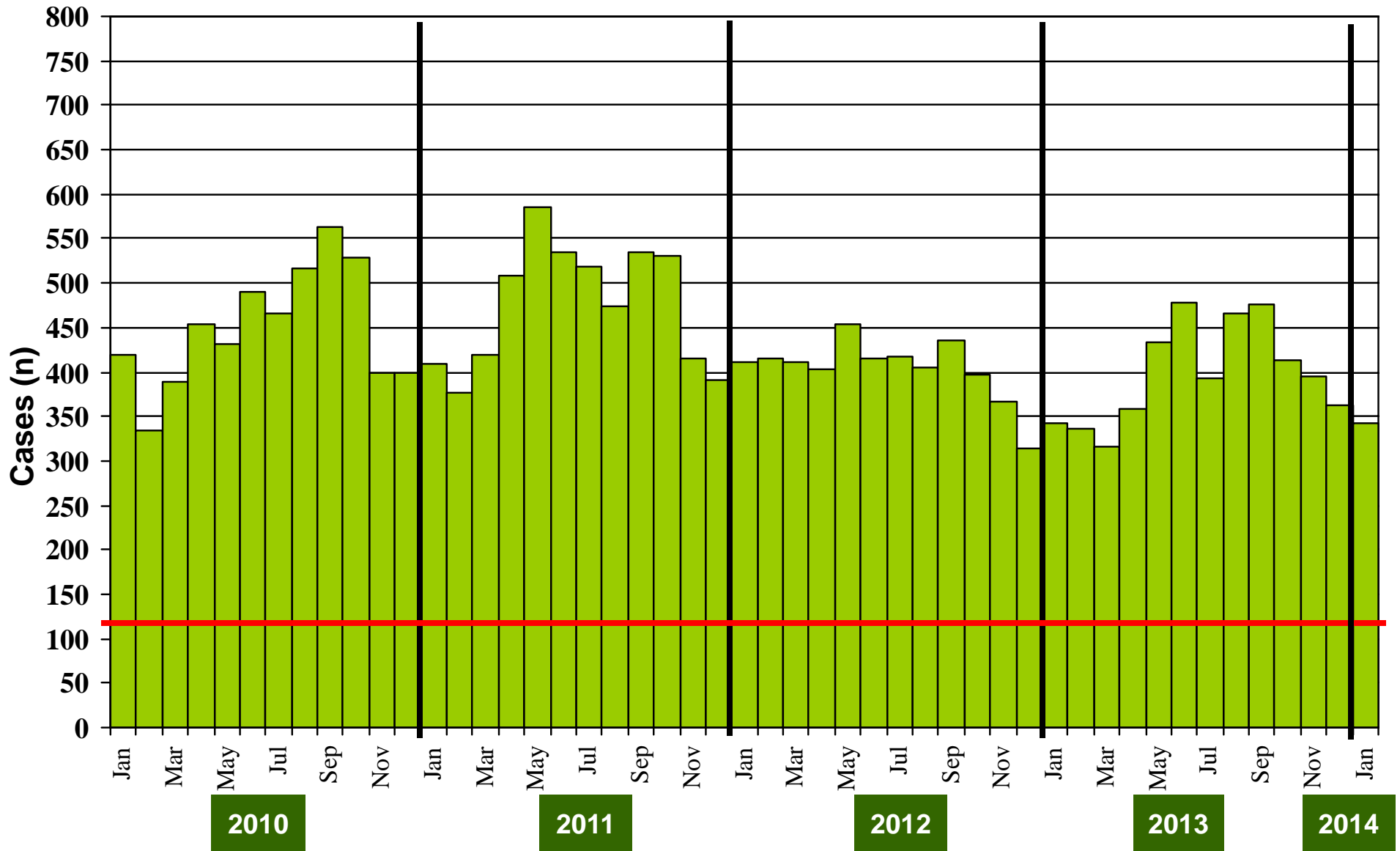
**Table 4: Distribution of AFP Cases By Week of Onset ^
Pakistan 2013-14* [Week number/Ending on]**

PROVINCE	W 45 09 Nov 2013	W 46 16 Nov 2013	W 47 23 Nov 2013	W 48 30 Nov 2013	W 49 07 Dec 2013	W 50 14 Dec 2013	W 51 21 Dec 2013	W 52 28 Dec 2013	W 01 04 Jan 2014	W 02 11 Jan 2014	W 03 18 Jan 2014	W 04 25 Jan 2014	W 05 01 Feb 2014	W 06 08 Feb 2014	W 07 15 Feb 2014
PUNJAB	43	35	43	29	34	40	22	50	30	31	50	50	35	31	8
SINDH	19	18	24	21	15	18	13	16	9	18	17	18	7	14	3
KP	18	18	18	23	19	19	19	24	12	19	13	18	16	18	5
FATA	3	12	8	4	7	5	5	9	8	8	7	6	9	9	2
BALUCHISTAN	5	3	11	3	5	5	3	4	1	4	5	6	8	0	1
AJK	2	0	1	1	2	0	0	2	1	2	0	1	0	1	0
GILGIT BILTISTAN	1	1	0	1	1	0	0	0	0	0	0	0	0	0	0
ISLAMABAD	0	0	0	0	0	0	0	1	0	0	0	0	0	1	0
PAKISTAN	91	87	105	82	83	87	62	106	61	82	92	99	75	74	19

* Afp.rec & Afplab.rec: Data as of 20-02-2014

^ MMWR Epidemiological Weeks

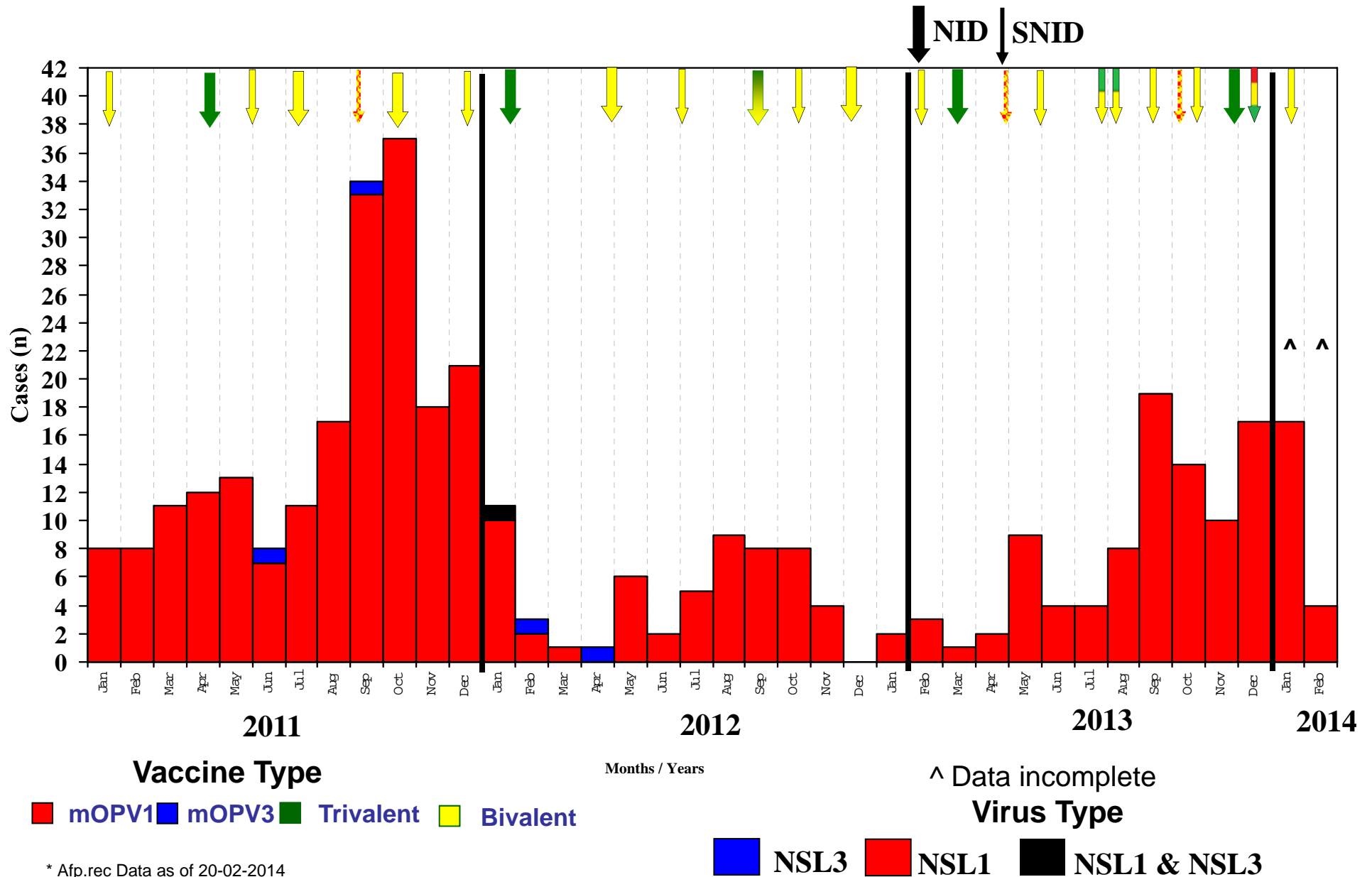
Graph 1: Distribution of AFP Cases by Month, Pakistan 2010-2014*



@ Non-polio AFP rate of 2/100,000 children < 15 years

* Afp.rec Data as of 20-02-2014

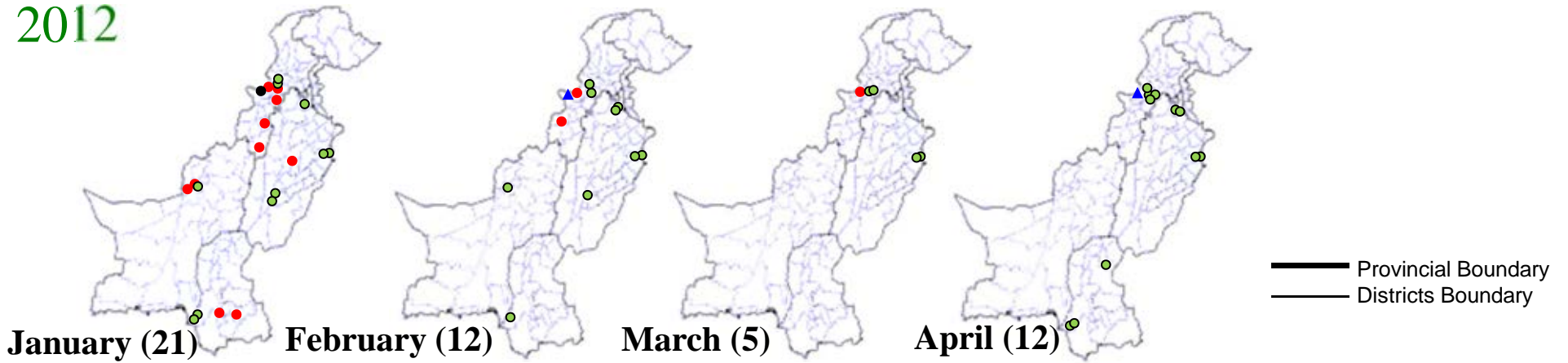
Confirmed Polio Cases By Poliovirus Type, 2011-2014*



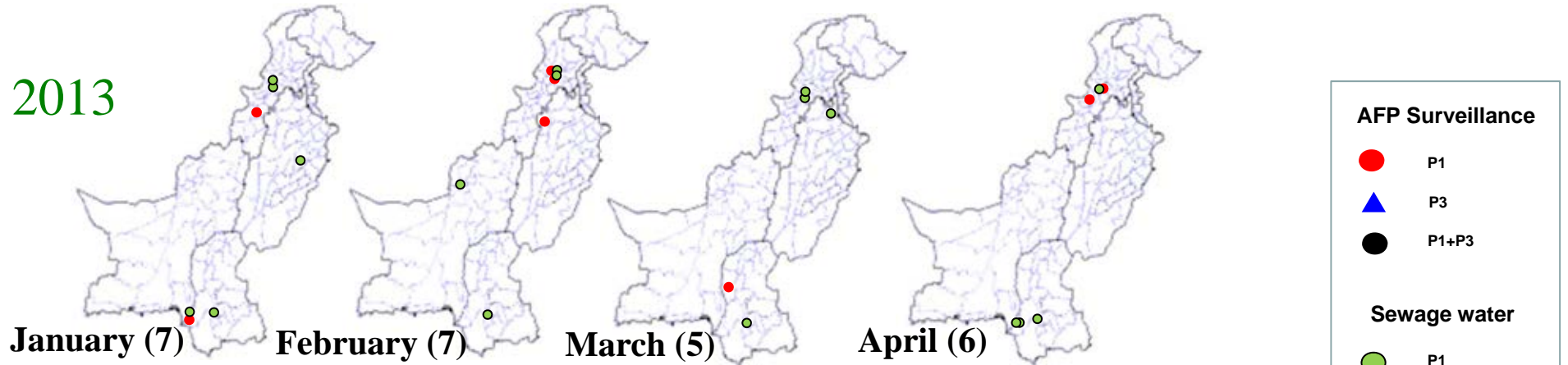
* Afp.rec Data as of 20-02-2014

Map 4: Monthly Comparison of P1 & P3 Polio Cases/Isolates 2012-2014*

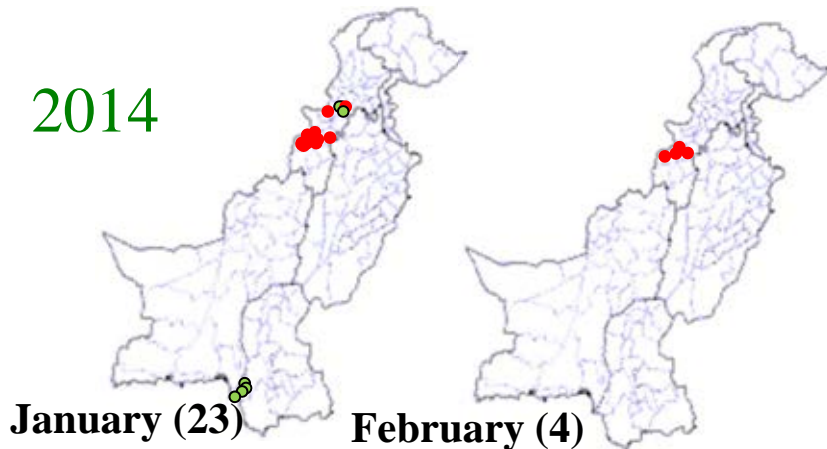
2012



2013



2014

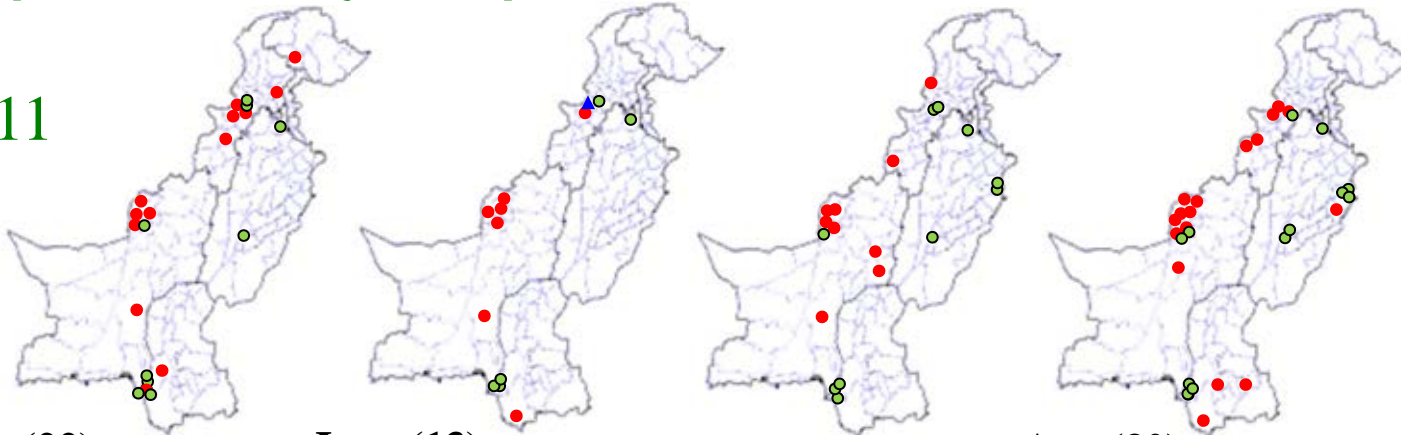


Environmental surveillance Started:
 July, 2009: Lahore & Karachi
 June, 2010: Rawalpindi, Peshawar & Quetta
 July, 2010: Multan
 April 2012: Sukkur
 Hyderabad: July 2012
 Faisalabad: September 2012

* Afp.rec Data as of 20-02-2014

Map 4.1: Monthly Comparison of P1 & P3 Polio Cases/Isolates 2011-2013*

2011



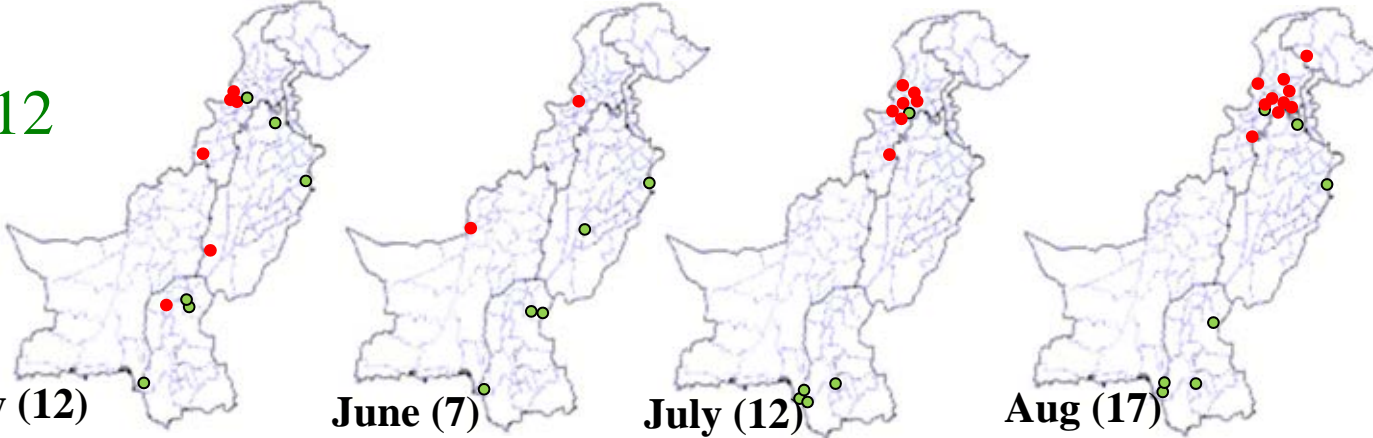
May (22)

June (13)

July (19)

Aug (30)

2012



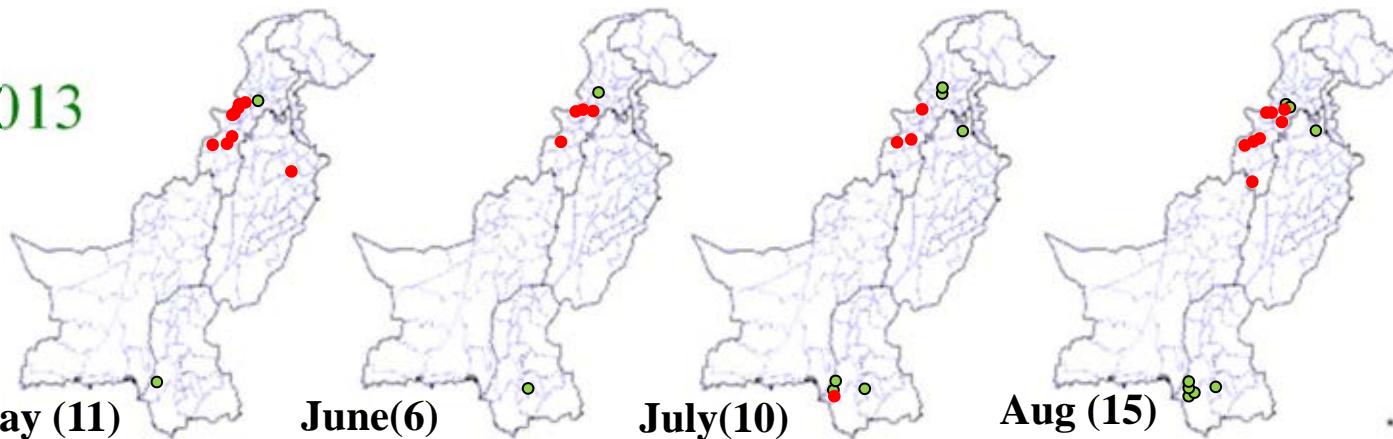
May (12)

June (7)

July (12)

Aug (17)

2013



May (11)

June(6)

July(10)

Aug (15)

AFP Surveillance

- P1
- ▲ P3
- Mixture P1 & 3

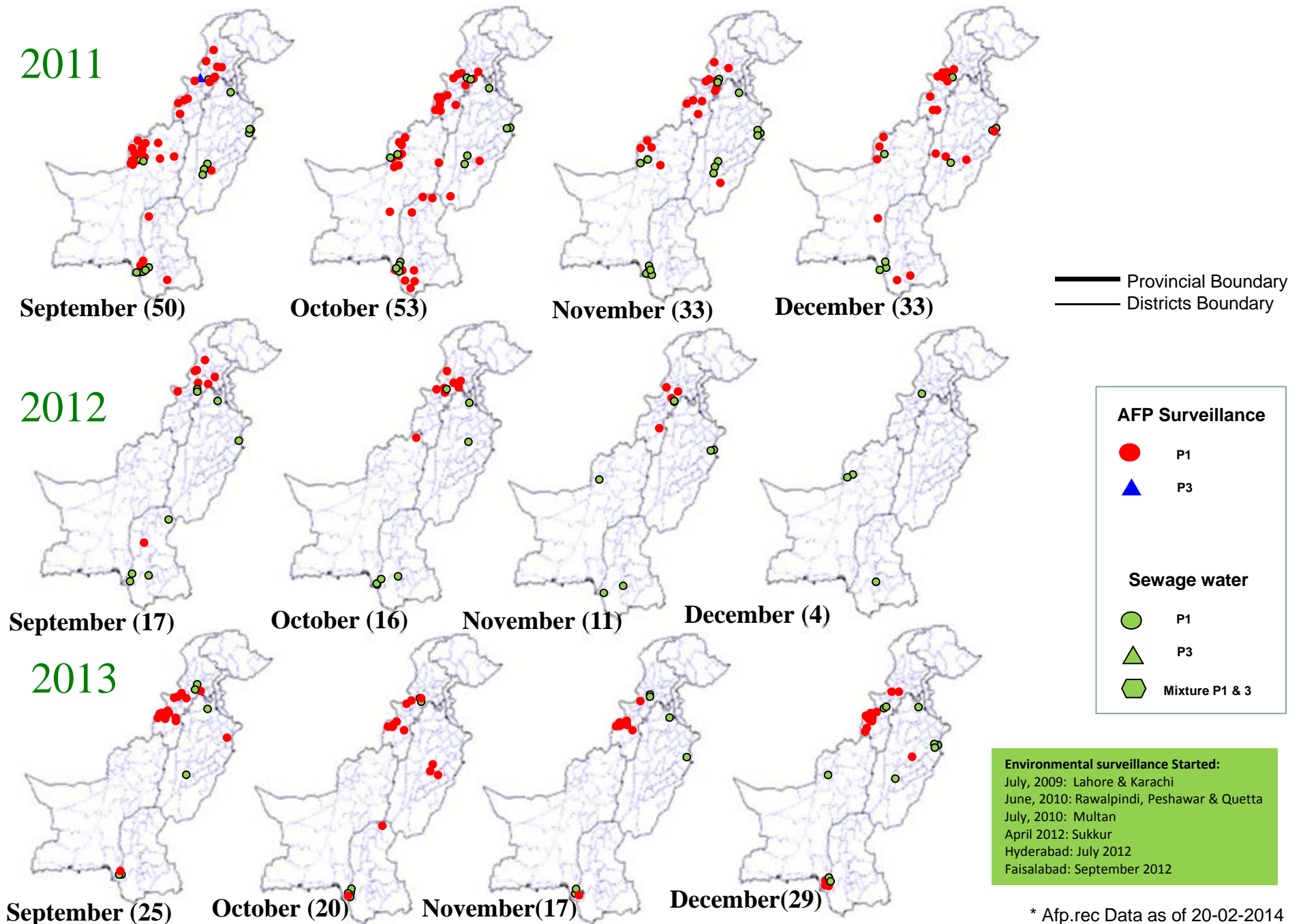
Sewage water

- P1
- ▲ P3
- ◻ Mixture P1 & 3

Environmental surveillance Started:
 July, 2009: Lahore & Karachi
 June, 2010: Rawalpindi, Peshawar & Quetta
 July, 2010: Multan
 April 2012: Sukkur
 Hyderabad: July 2012
 Faisalabad: September 2012

* Afp.rec Data as of 20-02-2014

Map 4.2: Monthly Comparison of P1 & P3 Polio Cases/Isolates 2011-2013*

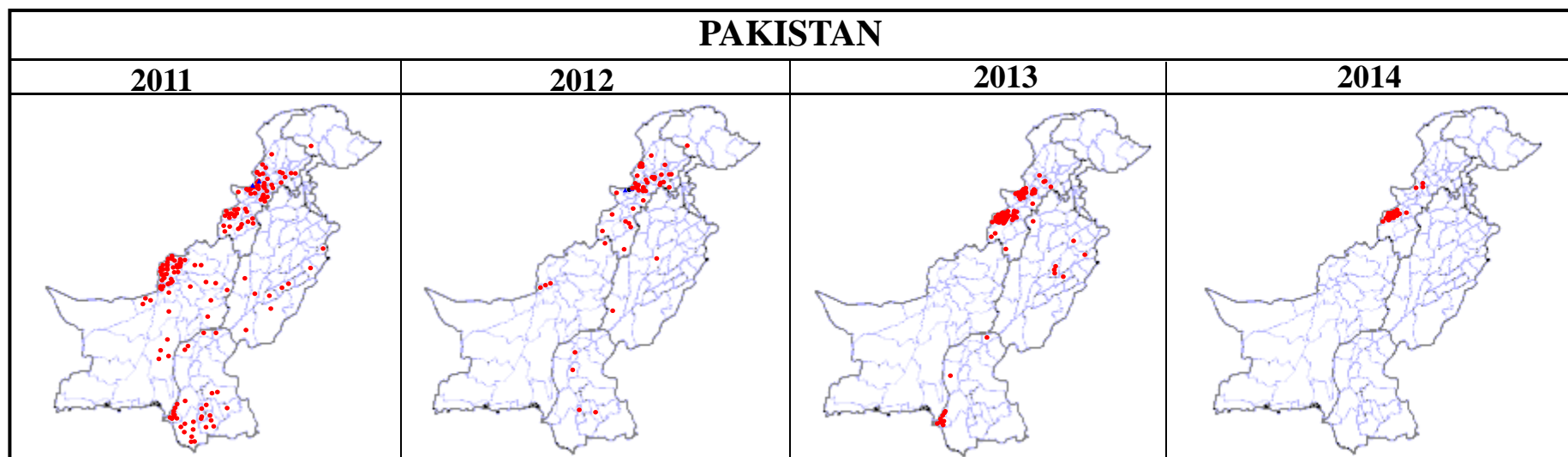


* Afp.rec Data as of 20-02-2014

Table 5: Polio Eradication Update, Pakistan 2011-2014*

Province/Region	Polio 1				Polio 3				Total Wild			
	2011	2012	2013	2014	2011	2012	2013	2014	2011	2012	2013	2014
PUNJAB	9	2	7	-	0	-	-	-	9	2	7	-
SINDH	33	4	10	-	0	-	-	-	33	4	10	-
KP	23	27	11	3	0	-	-	-	23	27	11	3
FATA^	57	17	65	18	2	2	-	-	59	20^	65	18
BALUCHISTAN	73	4	-	-	0	-	-	-	73	4	-	-
AJK	0	-	-	-	0	-	-	-	0	-	-	-
Gilgit-Baltistan	1	1	-	-	0	-	-	-	1	1	-	-
ISLAMABAD	0	-	-	-	0	-	-	-	0	-	-	-
PAKISTAN	196	55	93	21	2	2	-	-	198	58	93	21

^ FATA reported mixture of NSL1 & NSL3



* Afp.rec Data as of 20-02-2014

Table 6: Vaccination status of non polio AFP cases age 6-59 months 2011-2014*

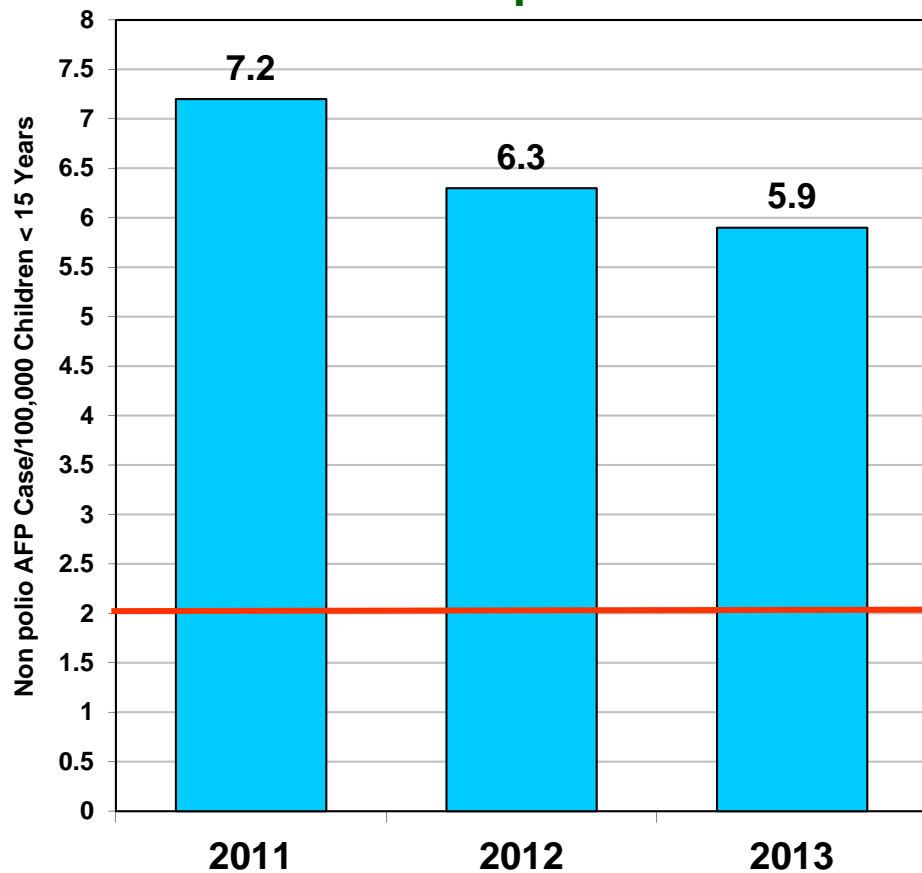
REGION	0 dose				1-2 doses				3 doses				4-6 doses				7+ doses			
	11	12	13	14	11	12	13	14	11	12	13	14	11	12	13	14	11	12	13	14
Central Punjab	0%	0%	0%	2%	1%	0%	0%	0%	2%	0%	1%	4%	6%	4%	7%	4%	92%	95%	91%	91%
North Punjab	0%	0%	0%	0%	1%	0%	0%	0%	1%	0%	0%	5%	5%	4%	4%	5%	93%	96%	96%	90%
South Punjab	0%	0%	0%	0%	0%	0%	0%	0%	1%	0%	0%	0%	5%	4%	5%	4%	93%	96%	94%	96%
PUNJAB	0%	0%	0%	1%	1%	0%	0%	0%	1%	0%	0%	2%	5%	4%	6%	4%	93%	96%	93%	93%
Karachi	4%	1%	1%	11%	1%	1%	5%	0%	0%	2%	0%	11%	6%	6%	6%	0%	88%	90%	88%	78%
North Sindh	0%	0%	0%	0%	1%	0%	0%	0%	0%	1%	0%	0%	5%	4%	5%	9%	94%	94%	95%	91%
South Sindh	1%	0%	0%	0%	1%	1%	0%	0%	0%	2%	1%	0%	6%	4%	7%	7%	93%	93%	91%	93%
SINDH	1%	0%	0%	2%	1%	1%	1%	0%	0%	1%	0%	2%	6%	4%	6%	7%	92%	93%	92%	89%
Central Khyber Pakhtunkhwa	1%	2%	2%	0%	1%	1%	1%	0%	0%	0%	1%	4%	3%	2%	2%	9%	95%	95%	95%	87%
North Khyber Pakhtunkhwa	1%	2%	1%	6%	2%	2%	1%	0%	1%	2%	1%	0%	7%	9%	7%	6%	90%	85%	91%	89%
South Khyber Pakhtunkhwa	2%	2%	1%	0%	4%	1%	0%	0%	4%	1%	1%	0%	7%	9%	4%	0%	83%	87%	95%	100%
Khyber Pakhtunkhwa	1%	2%	1%	2%	2%	1%	0%	0%	1%	1%	1%	2%	5%	6%	4%	7%	91%	89%	94%	89%
FATA	14%	18%	39%	74%	10%	6%	6%	5%	5%	3%	6%	0%	11%	12%	6%	0%	61%	62%	43%	21%
North Balochistan	4%	12%	9%	0%	12%	10%	11%	11%	23%	3%	3%	0%	12%	17%	28%	0%	50%	57%	49%	89%
Quetta Block	31%	14%	8%	0%	10%	10%	8%	25%	3%	0%	0%	0%	14%	14%	21%	0%	43%	62%	64%	75%
Rest of Balochistan	7%	9%	5%	0%	2%	6%	3%	0%	5%	5%	5%	33%	10%	10%	25%	0%	76%	70%	60%	33%
BALUCHISTAN	16%	8%	6%	0%	6%	8%	6%	6%	6%	3%	4%	6%	12%	17%	20%	0%	60%	64%	64%	82%
PAKISTAN	2%	1%	3%	7%	1%	1%	1%	1%	1%	1%	1%	2%	6%	5%	6%	4%	89%	92%	89%	86%

* Afp.rec Data as of 20-02-2014

Key Surveillance Indicators; 2011-2013*

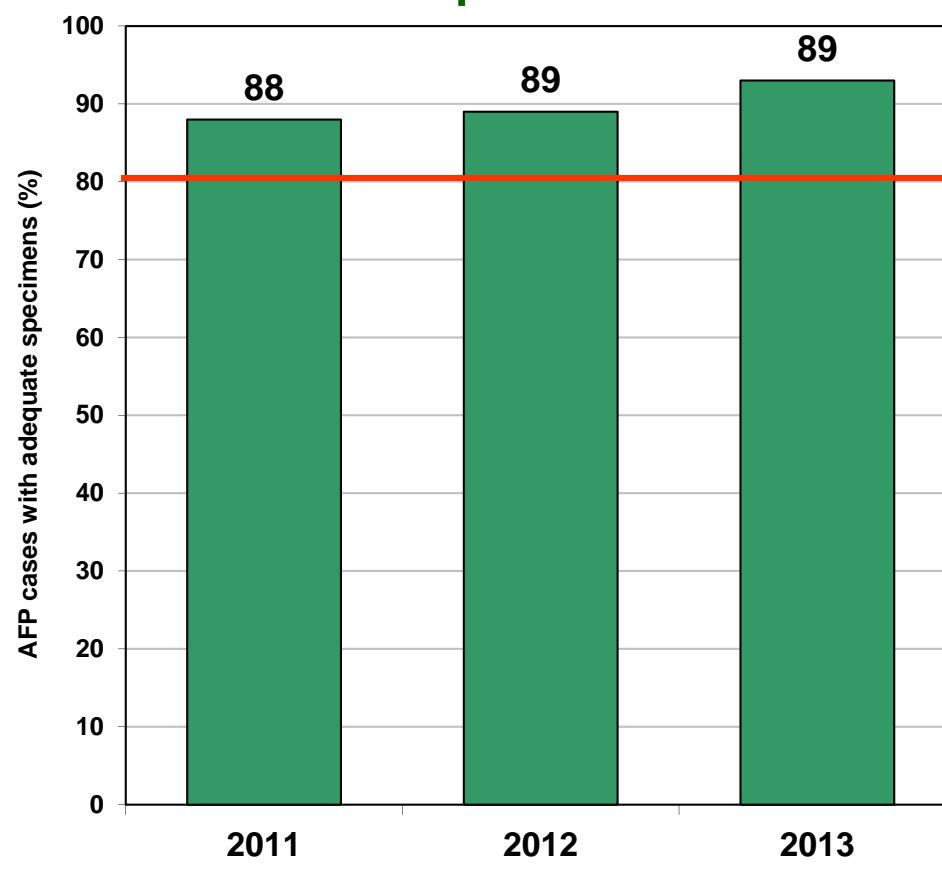
(Non polio AFP rate and % AFP cases with adequate specimens)

Graph 3



■ Non Polio AFP Rate

Graph 4



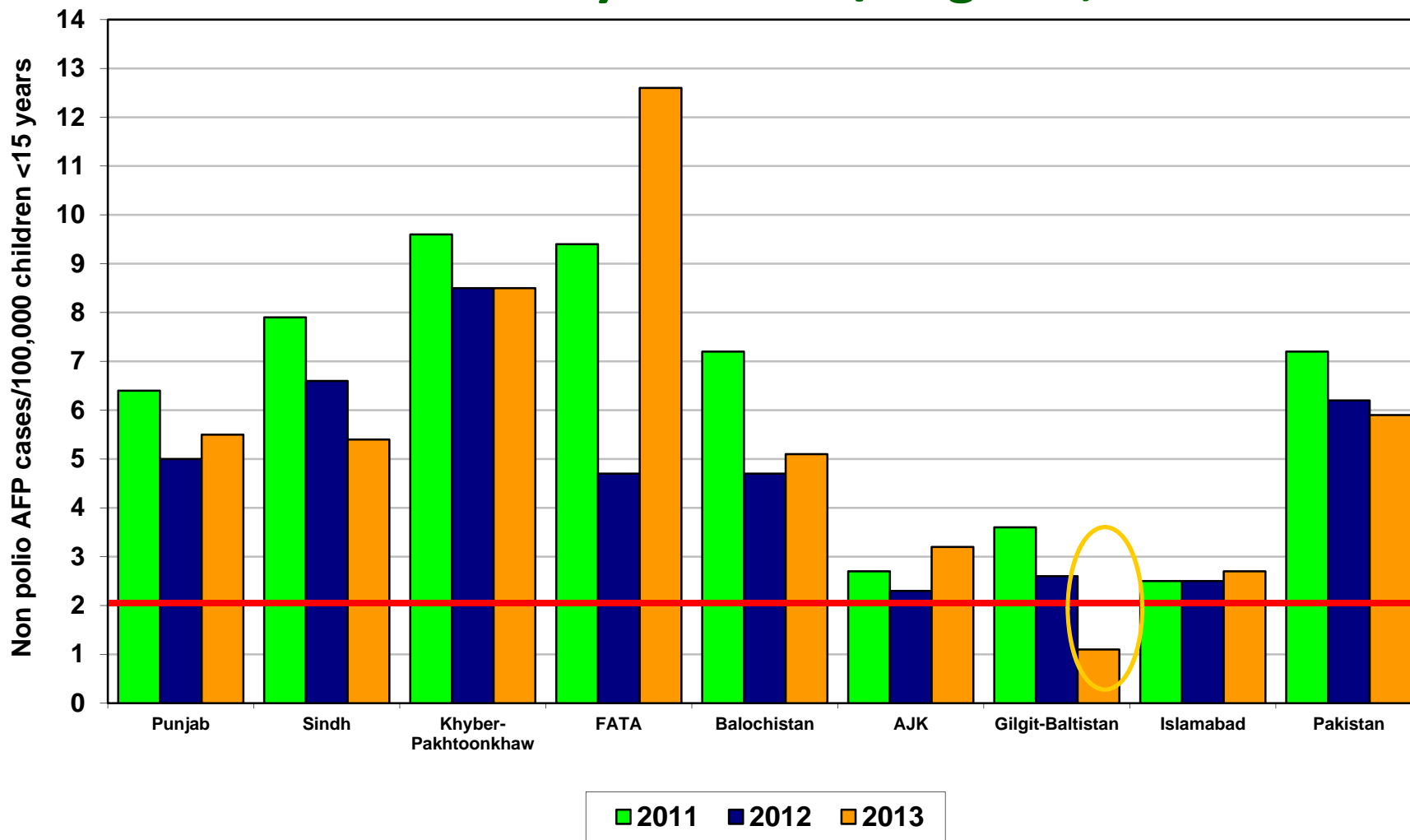
■ % AFP with Adequate Specimens

— Target

Non Polio AFP rate Up to Week No. 52 ended on 28th December, 2013

* Afp.rec Data as of 20-02-2014

Non Polio AFP Rate By Province/Regions, 2011-2013*

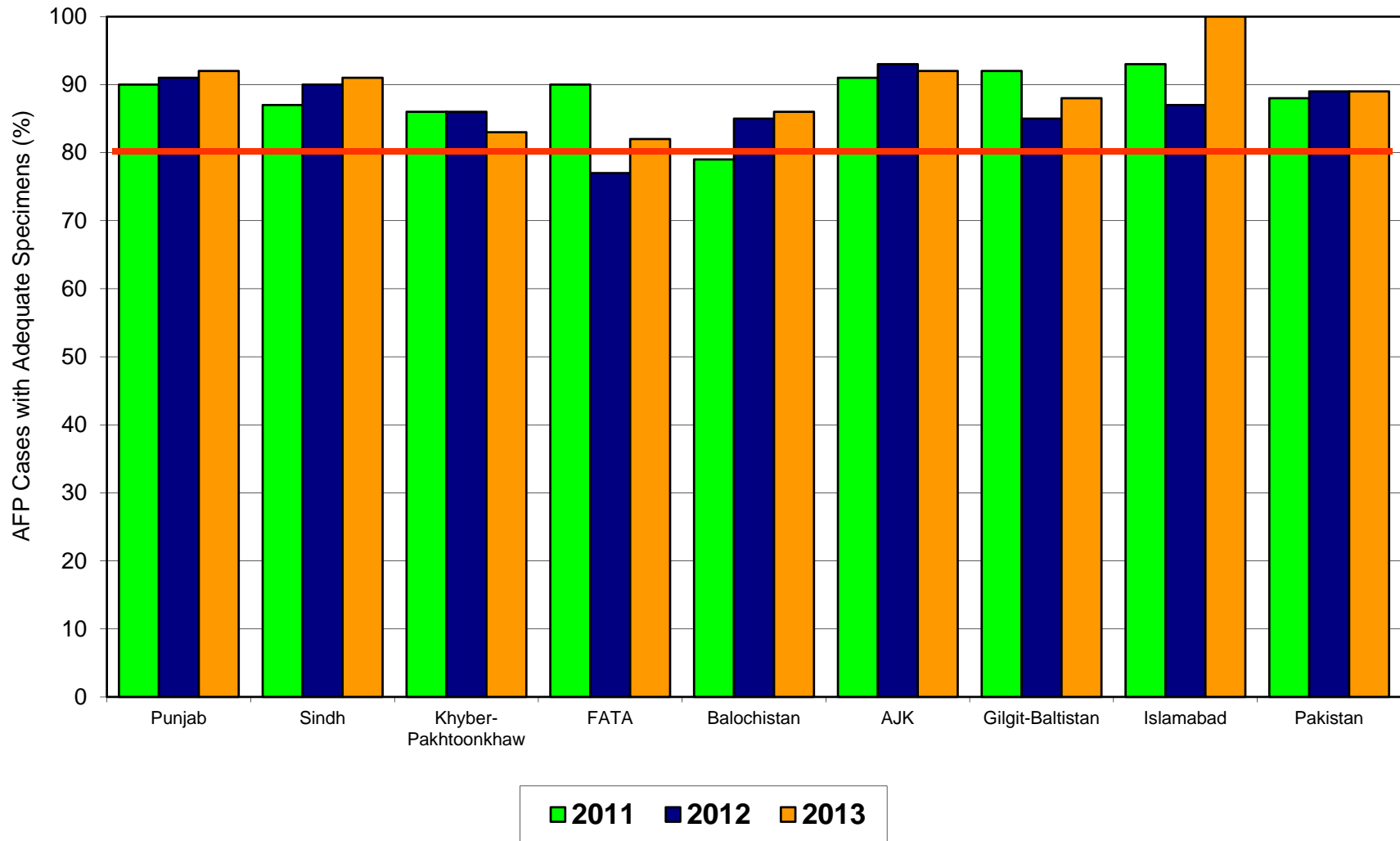


Non Polio AFP rate Up to Week No. 52 ended on 28th December, 2013

Target Non-Polio AFP Rate 2/ 100000 < 15 years of the age

* Afp.rec Data as of 20-02-2014

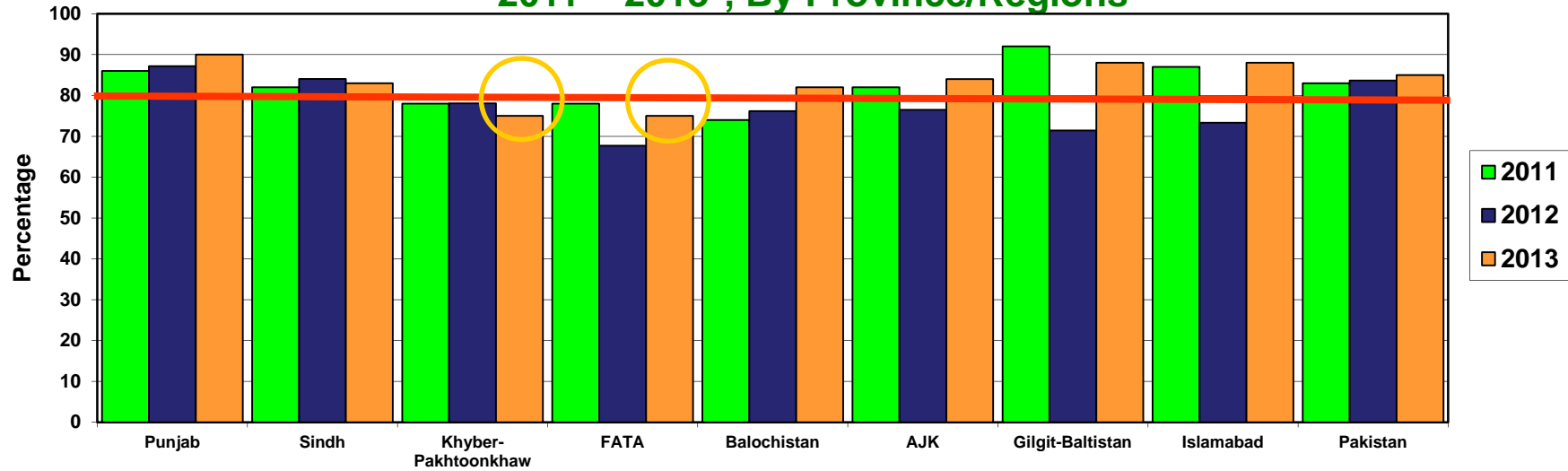
Percent AFP Cases with Adequate Specimens By Province/Regions, 2011-2013*



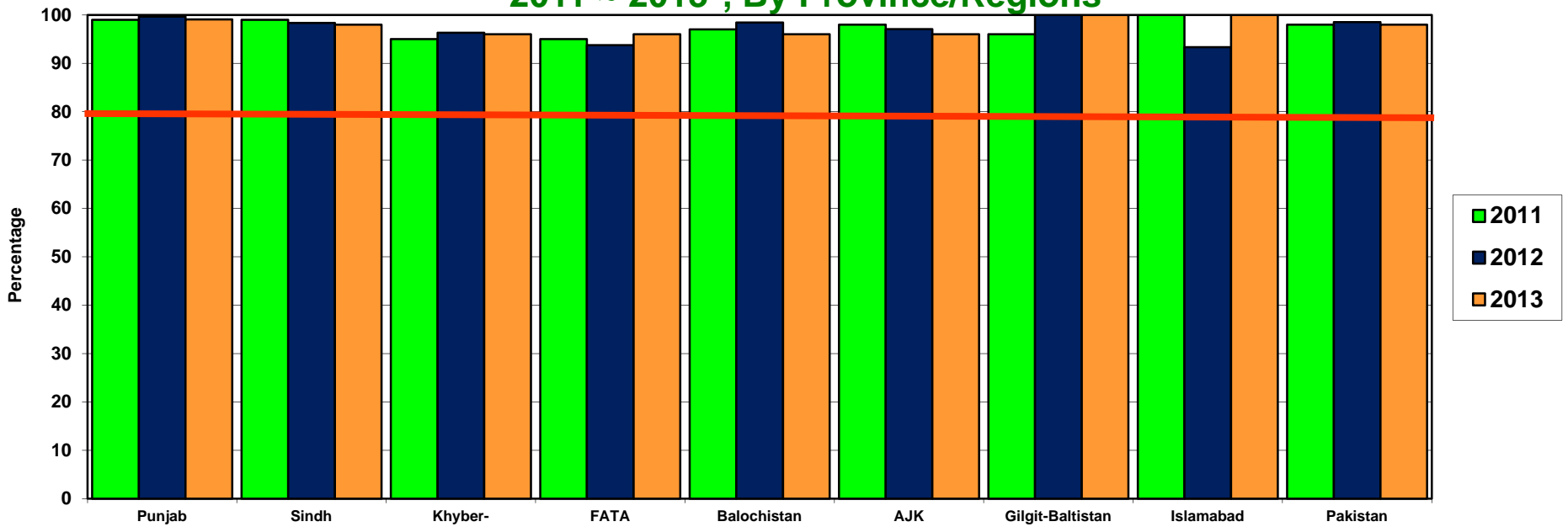
* Afp.rec Data as of 20-02-2014

 Target Adequate Sample cases = 80%

**Graph 5: Percent AFP Cases Notified within 07 days of paralysis onset
2011 ~ 2013*, By Province/Regions**



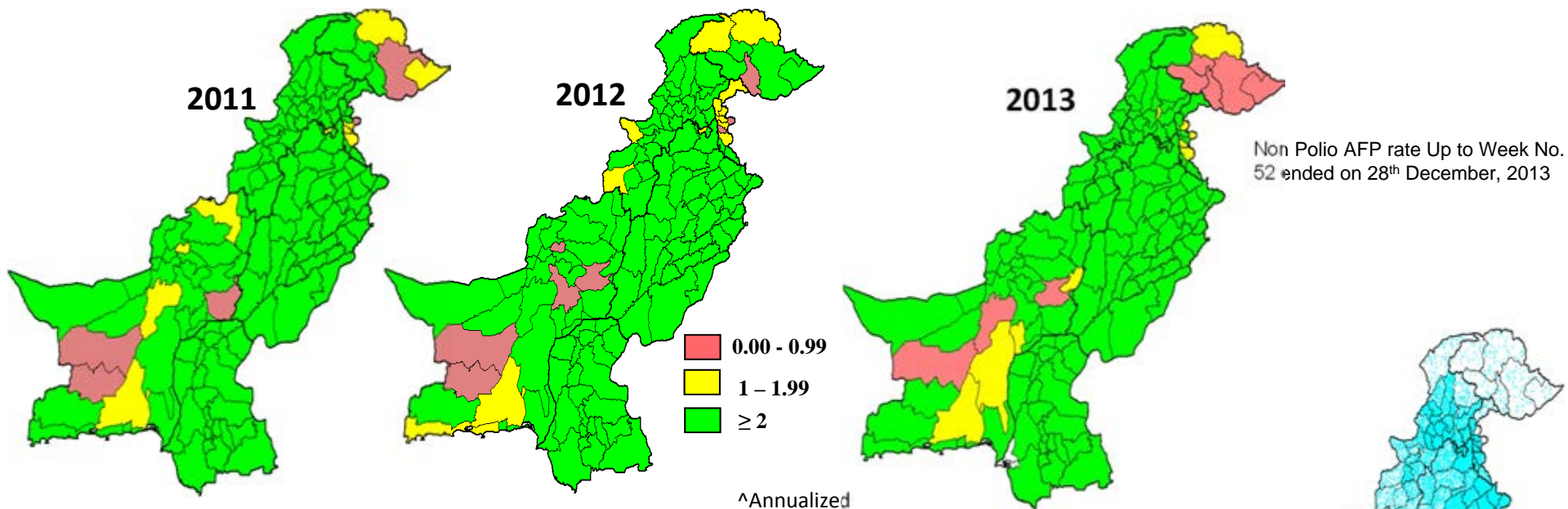
**Graph 6: Percent AFP Cases Investigated within 48 hours of notification
2011 ~ 2013*, By Province/Regions**



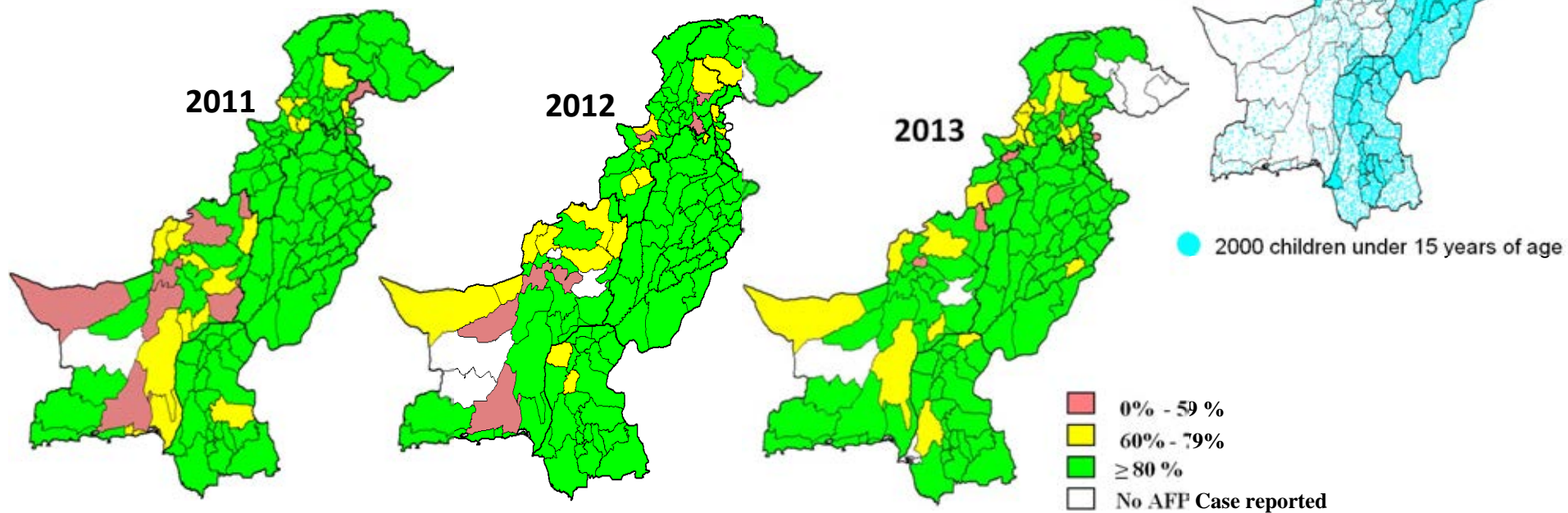
* Afp.rec Data as of 20-02-2014

— Target

Non-Polio^ AFP Rate by District



Percent AFP Cases with Adequate Specimens, by District



* Afp.rec Data as of 20-02-2014

Table 7: AFP CASES PENDING FOR CLASSIFICATION WITH DATE OF ONSET MORE THAN 90 DAYS* 2013 (1/4)

S. No	DISTRICT	TEHSIL	EPID	SEX	AGE	DONSET	DOSE€	DSTOOL1	DSTOOL2	LAB	FEVER	ASYM	PROG	FUP	PEND (DAYS)
1	KARAK	KARAK	KP/51/13/005	F	13	01-01-13	7+	15-02-13	17-02-13	EV	N	Y	Y	Y	415
2	MARDAN	MARDAN	KP/40/13/007	M	29	17-01-13	7+	06-02-13	07-02-13	EV	Y	Y	Y	Y	399
3	PESHAWAR	PESHAWAR	KP/30/13/008	M	96	15-01-13	7+	26-02-13	27-02-13	NVI	N	N	Y	Y	401
4	SWAT	SWAT	KP/24/13/004	M	120	20-02-13	7+	Child Died Before Stool Collection			Y	N	Y	DIED	365
5	WAZIR-N	MIRAN SHAH	FT/64/13/001	M	96	08-02-13	6	13-02-13		NVI	Y	N	Y	DIED	377
6	GHOTKI	KHANGARH	SD/42/13/052	M	72	21-07-13	7+	30-08-13	31-08-13	NVI	Y	N	Y	Y	214
7	HYDERABAD	HYDERABAD CITY	SD/21/13/024	M	84	28-09-13	7+	Child Died Before Stool Collection			N	N	Y	DIED	145
8	HYDERABAD	HYDERABAD RURAL	SD/21/13/033	F	43	17-10-13	7+	10-12-13	11-12-13	NVI	N	N	Y	Y	126
9	JACOBABAD	THUL	SD/53/13/013	M	156	16-05-13	7+	11-06-13	15-06-13	NVI	Y	Y	Y	Y	280
10	JACOBABAD	THUL	SD/53/13/017	M	10	26-06-13	7+	26-07-13	27-07-13	EV	Y	Y	Y	Y	239
11	JAMSHORO	T.B.KHAN	SD/25/13/009	F	18	03-05-13	7+	25-05-13	12-06-13	NVI	N	N	Y	Y	293
12	JAMSHORO	SEHWAN	SD/25/13/019	M	6	02-10-13	3	16-10-13	17-10-13	NVI	Y	Y	Y	LOST	141
13	JAMSHORO	SEHWAN	SD/25/13/020	F	12	02-11-13	7+	20-11-13	21-11-13	NVI	Y	Y	Y	Y	110
14	KAMBAR	MIRO KHAN	SD/55/13/023	M	24	26-09-13	7+	29-10-13	30-10-13		N	Y	Y	Y	147
15	KASHMORE	KANDHKOT	SD/54/13/002	M	54	27-05-13	7+	Late Notified			N	N	Y	LOST	269
16	KHAIRPUR	GAMBAT	SD/43/13/049	F	48	14-10-13	7+	05-11-13	09-11-13	NVI	Y	N	Y	DIED	129
17	KHIBALDIA	BALDIA	SD/61/13/005	F	36	18-06-13	4	Child Died Before Stool Collection			N	N	Y	DIED	247
18	KHIBALDIA	BALDIA	SD/61/13/010	M	16	10-10-13	7+	24-10-13	26-10-13	EV	Y	Y	Y		133
19	KHIBINQASIM	BINQASIM	SD/62/13/012	M	96	19-09-13	7+	17-11-13	18-11-13	NVI	Y	N	Y	Y	154
20	KHIGADAP	GADAP	SD/63/13/010	F	42	02-06-13	7+	Child Died Before Stool Collection			Y	N	Y	DIED	263
21	KHIGADAP	GADAP	SD/63/13/021	F	10	23-08-13	1	23-09-13	24-09-13	NVI	Y	Y	Y	Y	181
22	KHIGADAP	GADAP	SD/63/13/031	M	14	15-07-13	7+	Late Notified			Y	Y	Y	Y	220
23	KHIGADAP	GADAP	SD/63/13/034	F	48	18-11-13	7+	Late Notified			Y	N	Y	Y	94
24	KHIJAMSHEED	JAMSHEED	SD/66/13/004	F	60	01-05-13	7+	Child Died Before Stool Collection			Y	N	Y	DIED	295
25	KHIKAMARI	KAMARI	SD/67/13/005	M	108	25-06-13	7+	07-07-13	15-07-13	NVI	Y	Y	Y	Y	240
26	KHISADDAR	SADDAR	SD/77/13/004	F	38	05-04-13	7+	10-05-13	11-05-13	NVI	N	N	Y	Y	321
27	NFEROZ	BHIRIA	SD/45/13/003	F	144	05-02-13	7+	Child Died Before Stool Collection			Y	Y	Y	DIED	380
28	NFEROZ	MORO	SD/45/13/013	F	54	10-05-13	7+	01-06-13	02-06-13	NVI	N	Y	Y	Y	286
29	SANGHAR	KHIPRO	SD/32/13/024	F	60	15-09-13	7+	01-10-13	02-10-13	NVI	Y	Y	Y	Y	158
30	T.ALLAHYAR	TANDO ALLAHYAR	SD/27/13/009	M	4	28-05-13	4	24-06-13	25-06-13	NVI	Y	Y	Y	Y	268
31	T.ALLAHYAR	J.MUREE	SD/27/13/010	M	72	13-06-13	7+	Child Died Before Stool Collection			Y	Y	Y	DIED	252
32	T.ALLAHYAR	J.MUREE	SD/27/13/015	M	60	21-08-13	7+	03-09-13	05-09-13	NVI	N	Y	Y	Y	183
33	THARPARKAR	MITHI	SD/33/13/021	M	36	21-09-13	7+	14-10-13	15-10-13	NVI	Y	N	N	Y	152
34	THATTA	THATTA	SD/22/13/032	M	72	06-06-13	7+	15-07-13	16-07-13	NVI	Y	Y	Y	Y	259
35	THATTA	JATI	SD/22/13/049	M	9	17-11-13	5	Child Died Before Stool Collection			Y	N	Y	DIED	95
36	UMERKOT	UMER KOT	SD/34/13/026	M	2	06-09-13	1	17-09-13		EV	Y	N	Y	DIED	167
37	ABOTABAD	HAVALIAN	KP/10/13/017	M	96	23-07-13	7+	14-08-13	15-08-13	NVI	Y	N	Y	Y	212
38	ABOTABAD	ABBOTABAD	KP/10/13/021	M	49	27-07-13	7+	16-08-13	17-08-13	EV	N	N	N		208
39	ABOTABAD	ABBOTABAD	KP/10/13/025	F	14	15-10-13	7+	03-11-13	04-11-13	NVI	N	N	Y		128
40	ABOTABAD	HAVALIAN	KP/10/13/027	F	72	18-08-13	7+	Late Notified			N	Y	Y	Y	186
41	ABOTABAD	ABBOTABAD	KP/10/13/029	F	144	18-10-13	0	08-11-13	15-11-13	NVI	Y	Y	Y	Y	125
42	BANNU	BANNU	KP/61/13/010	M	53	30-04-13	7+	Late Notified			Y	N	N	Y	296
43	BUNIR	DAGGAR	KP/22/13/008	M	35	12-03-13	7+	01-04-13	02-04-13	NVI	Y	Y	Y	Y	345
44	BUNIR	DAGGAR	KP/22/13/007	M	132	28-02-13	7+	30-03-13	31-03-13	NVI	N	N	Y	Y	357

€ Based on recall of parents

* Afp.rec Data as of 20-02-2014

60 days Follow-up not done

FUP = Residual Weakness at 60 days follow up.

Table 7.1: AFP CASES PENDING FOR CLASSIFICATION WITH DATE OF ONSET MORE THAN 90 DAYS* 2013 (2/4)

S. No	DISTRICT	TEHSIL	EPID	SEX	AGE	DONSET	DOSE€	DSTOOL1	DSTOOL2	LAB	FEVER	ASYM	PROG	FUP	PEND (DAYS)
45	BUNIR	DAGGAR	KP/22/13/015	M	72	01-01-13	7+	Late Notified			Y	Y	Y	Y	415
46	BUNIR	DAGGAR	KP/22/13/044	M	16	09-08-13	0	Late Notified			Y	N	N	Y	195
47	CHARSADA	CHARSADA	KP/31/13/049	F	72	10-08-13	7+	24-08-13	27-08-13	NVI	Y	Y	Y		194
48	CHARSADA	SHABQADAR	KP/31/13/052	F	39	27-08-13	7+	10-09-13	11-09-13	NVI	Y	Y	Y		177
49	CHARSADA	CHARSADA	KP/31/13/053	M	18	03-08-13	7+	03-09-13	04-09-13	NVI	Y	Y	Y		201
50	CHARSADA	CHARSADA	KP/31/13/072	F	30	25-10-13	7+	19-12-13	20-12-13	NVI	Y	Y	Y		118
51	CHARSADA	TANGI	KP/31/13/069	F	15	19-11-13	7+	07-12-13	08-12-13	NVI	N	Y	Y		93
52	DIKHAN	KULACHI	KP/60/13/013	F	18	22-04-13	5	16-06-13	17-06-13	VACC	N	Y	Y	Y	304
53	DIKHAN	DIKHAN	KP/60/13/014	M	54	17-06-13	7+	20-06-13		NVI	Y	Y	Y	DIED	248
54	DIRLOWER	SAMAR BAGH	KP/23/13/015	F	13	30-01-13	7+	Late Notified			Y	Y	Y	Y	386
55	DIRLOWER	SAMAR BAGH	KP/23/13/033	F	96	25-07-13	7+	05-09-13	07-09-13	NVI	Y	Y	Y	Y	210
56	DIRLOWER	TIMERGARA	KP/23/13/034	M	30	08-08-13	7+	16-09-13	17-09-13	NVI	Y	Y	Y	Y	196
57	DIRLOWER	TIMERGARA	KP/23/13/038	M	1	10-10-13	1	15-11-13	16-11-13	NVI	Y	Y	Y	Y	133
58	DIRUPPER	DIR	KP/25/13/006	F	21	25-07-13	7+	08-08-13	10-08-13	EV	UK	Y	Y	Y	210
59	HANGU	HANGU	KP/54/13/004	F	30	05-06-13	7+	05-07-13	06-07-13	EV	Y	N	Y	Y	260
60	HANGU	HANGU	KP/54/13/014	F	8	28-10-13	7+	26-11-13	28-11-13	NVI	Y	N	Y		115
61	HARIPUR	HARIPUR	KP/12/13/005	M	66	18-01-13	7+	19-02-13	20-02-13	EV	N	N	Y	Y	398
62	HARIPUR	HARIPUR	KP/12/13/012	F	20	18-04-13	7+	19-05-13	20-05-13	EV	Y	Y	Y	Y	308
63	HARIPUR	HARIPUR	KP/12/13/024	F	48	06-10-13	7+	29-10-13	30-10-13	NVI	Y	N	Y	Y	137
64	KARAK	TAKHT E NASRATI	KP/51/13/017	M	21	09-09-13	7+	24-09-13	26-09-13	NVI	Y	Y	Y	Y	164
65	KOHAT	LACHI	KP/50/13/012	M	96	28-05-13	7+	26-06-13	27-06-13	NVI	N	N	Y	Y	268
66	KOHAT	LACHI	KP/50/13/015	M	21	15-05-13	7+	Late Notified			Y	Y	Y	Y	281
67	KOHAT	KOHAT	KP/50/13/027	M	84	06-11-13	7+	28-11-13		NVI	N	N	Y		106
68	LAKKIMRWT	LAKKIMRWT	KP/62/13/018	M	26	22-05-13	7+	21-06-13	22-06-13		N	Y	Y	Y	274
69	LAKKIMRWT	LAKKIMRWT	KP/62/13/030	F	28	11-09-13	7+	01-10-13	03-10-13	NVI	N	N	Y	Y	162
70	LAKKIMRWT	LAKKIMRWT	KP/62/13/038	F	96	05-10-13	3	26-10-13	27-10-13	NVI	Y	Y	Y	Y	138
71	MANSEHRA	MANSEHRA	KP/14/13/005	M	168	17-03-13	7+	Child Died Before Stool Collection			N	N	Y	DIED	340
72	MANSEHRA	MANSEHRA	KP/14/13/010	F	9	01-06-13	6	17-06-13	19-06-13	NVI	Y	N	Y	DIED	264
73	MANSEHRA	MANSEHRA	KP/14/13/019	F	24	13-07-13	7+	Child Died Before Stool Collection			UK	UK	Y	DIED	222
74	MANSEHRA	OGHI	KP/14/13/038	M	26	08-11-13	7+	28-11-13	02-12-13	NVI	Y	Y	N		104
75	MANSEHRA	MANSEHRA	KP/14/13/026	M	84	31-08-13	7+	16-09-13	17-09-13	NVI	Y	N	Y	DIED	173
76	MARDAN	TAKHT BHAI	KP/40/13/034	M	5	10-03-13	6	Late Notified			N	Y	UK	Y	347
77	MARDAN	MARDAN	KP/40/13/059	F	24	25-07-13	7+	21-08-13	22-08-13	NVI	Y	Y	Y	Y	210
78	MARDAN	MARDAN	KP/40/13/063	M	108	15-08-13	7+	29-08-13	31-08-13	NVI	Y	Y	Y	Y	189
79	MARDAN	MARDAN	KP/40/13/046	F	24	15-06-13	7+	05-07-13	06-07-13	EV	Y	Y	Y	Y	250
80	MARDAN	MARDAN	KP/40/13/074	F	24	02-08-13	7+	11-09-13	13-09-13	NVI	N	Y	Y	Y	202
81	MARDAN	MARDAN	KP/40/13/077	F	32	02-09-13	7+	24-09-13	25-09-13	NVI	Y	Y	Y	Y	171
82	MARDAN	MARDAN	KP/40/13/073	M	23	15-06-13	7+	Late Notified			UK	Y	UK	Y	250
83	MARDAN	MARDAN	KP/40/13/095	F	60	13-10-13	7+	16-11-13	17-11-13	NVI	N	N	Y	Y	130
84	NOWSHERA	NOWSHERA	KP/32/13/012	F	108	15-03-13	7+	Child Died Before Stool Collection			Y	N	Y	DIED	342
85	NOWSHERA	NOWSHERA	KP/32/13/029	M	14	28-07-13	7+	17-08-13	18-08-13	EV	Y	Y	Y		207
86	NOWSHERA	NOWSHERA	KP/32/13/036	F	30	03-08-13	7+	25-09-13	26-09-13	NVI	Y	Y	Y		201
87	NOWSHERA	NOWSHERA	KP/32/13/031	M	25	25-07-13	7+	21-08-13	22-08-13	EV	Y	Y	Y		210
88	PESHAWAR	PESHAWAR	KP/30/13/022	F	22	06-02-13	7+	Late Notified			N	N	N	Y	379

€ Based on recall of parents

* Afp.rec Data as of 20-02-2014

60 days Follow-up not done

FUP = Residual Weakness at 60 days follow up.

Table 7.2: AFP CASES PENDING FOR CLASSIFICATION WITH DATE OF ONSET MORE THAN 90 DAYS* 2013 (3/4)

S. No	DISTRICT	TEHSIL	EPID	SEX	AGE	DONSET	DOSE€	DSTOOL1	DSTOOL2	LAB	FEVER	ASYM	PROG	FUP	PEND (DAYS)
89	PESHAWAR	PESHAWAR	KP/30/13/026	M	24	17-04-13	0	17-05-13	19-05-13	EV	Y	Y	Y	Y	309
90	PESHAWAR	PESHAWAR	KP/30/13/039	F	54	03-05-13	7+	14-06-13	15-06-13	EV	Y	Y	Y	Y	293
91	PESHAWAR	PESHAWAR	KP/30/13/043	F	66	16-06-13	7+	07-07-13	08-07-13	NVI	Y	Y	Y	Y	249
92	PESHAWAR	PESHAWAR	KP/30/13/052	M	36	13-07-13	7+	27-07-13	28-07-13	EV	N	Y	Y	Y	222
93	PESHAWAR	PESHAWAR	KP/30/13/063	M	14	16-08-13	7+	30-08-13	01-09-13	VACC	Y	N	Y	LOST	188
94	PESHAWAR	PESHAWAR	KP/30/13/069	M	84	29-08-13	7+	13-09-13	14-09-13	NVI	Y	Y	Y	DIED	175
95	PESHAWAR	PESHAWAR	KP/30/13/057	F	21	14-07-13	7+	16-08-13	17-08-13	EV	Y	Y	Y	Y	221
96	PESHAWAR	PESHAWAR	KP/30/13/076	F	24	28-08-13	7+	02-10-13	10-10-13	NVI	Y	N	UK	Y	176
97	PESHAWAR	PESHAWAR	KP/30/13/097	F	9	02-10-13	0	19-11-13	20-11-13	EV	Y	Y	Y		141
98	PESHAWAR	PESHAWAR	KP/30/13/094	F	96	11-10-13	7+	17-11-13	19-11-13	NVI	Y	Y	Y	Y	132
99	PESHAWAR	PESHAWAR	KP/30/13/096	M	7	08-10-13	3	18-11-13	19-11-13	NVI	Y	Y	Y	Y	135
100	PESHAWAR	PESHAWAR	KP/30/13/056	F	24	14-07-13	7+	06-08-13	07-08-13	NVI	N	N	Y	Y	221
101	PESHAWAR	PESHAWAR	KP/30/13/059	M	86	13-06-13	7+	Late Notified			Y	Y	Y	Y	252
102	PESHAWAR	PESHAWAR	KP/30/13/106	M	25	05-10-13	7+	29-11-13	30-11-13	EV	N	Y	Y		138
103	PESHAWAR	PESHAWAR	KP/30/13/095	F	23	25-10-13	7+	14-11-13	16-11-13	NVI	N	N	Y	DIED	118
104	PESHAWAR	PESHAWAR	KP/30/13/098	F	26	01-11-13	7+	20-11-13	21-11-13	NVI	Y	N	Y	Y	111
105	PESHAWAR	PESHAWAR	KP/30/13/114	M	14	15-10-13	7+	Late Notified			N	Y	Y	Y	128
106	PESHAWAR	PESHAWAR	KP/30/13/115	M	21	20-11-13	7+	19-12-13	20-12-13	NVI	Y	Y	Y		92
107	PESHAWAR	PESHAWAR	KP/30/13/120	M	52	17-11-13	7+	02-01-14	03-01-14	NVI	N	N	Y		95
108	PESHAWAR	PESHAWAR	KP/30/13/102	F	12	16-11-13	3	05-12-13	06-12-13	VACC	Y	Y	Y		96
109	PESHAWAR	PESHAWAR	KP/30/13/111	F	46	08-11-13	7+	15-12-13	16-12-13	NVI	Y	Y	Y	Y	104
110	SHANGLA	MARTOONG	KP/26/13/001	M	72	08-01-13	7+	Late Notified			Y	Y	Y	LOST	408
111	SHANGLA	CHAKISAR	KP/26/13/008	F	36	01-06-13	7+	27-06-13	31-07-13	NVI	Y	Y	Y	Y	264
112	SWABI	SWABI	KP/41/13/035	M	36	15-09-13	7+	Late Notified			Y	Y	Y		158
113	SWABI	LAHORE	KP/41/13/048	M	17	23-10-13	7+	24-11-13	25-11-13	EV	N	Y	Y		120
114	SWAT	SWAT	KP/24/13/006	F	132	02-04-13	7+	10-04-13		NVI	N	N	Y	DIED	324
115	SWAT	SWAT	KP/24/13/009	M	16	19-04-13	7+	14-05-13	15-05-13	NVI	Y	N	N	Y	307
116	SWAT	SWAT	KP/24/13/025	M	96	01-11-13	3	Late Notified			Y	N	Y		111
117	SWAT	SWAT	KP/24/13/024	M	6	24-10-13	5	07-11-13	08-11-13	NVI	N	Y	UK		119
118	TANK	TANK	KP/63/13/005	M	42	25-02-13	7+	27-04-13	28-04-13	NVI	Y	N	UK	Y	360
119	TANK	TANK	KP/63/13/009	M	13	02-08-13	7+	06-09-13	07-09-13	NVI	N	N	Y	Y	202
120	TANK	TANK	KP/63/13/010	M	24	11-08-13	7+	24-09-13	25-09-13	NVI	Y	Y	Y	Y	193
121	JAFARABAD	SOHBAT PUR	BN/43/13/015	F	30	18-07-13	7+	30-08-13	31-08-13	EV	Y	Y	Y	Y	217
122	NSIRABAD	DMJAMALI	BN/41/13/010	M	18	08-09-13	7+	Child Died Before Stool Collection			Y	N	Y	DIED	165
123	QUETTA	QUETTA CITY	BN/11/13/028	F	13	18-11-13	7+	Late Notified			Y	Y	Y	Y	94
124	ZIARAT	ZIARAT	BN/32/13/003	M	13	16-09-13	3	08-10-13	09-10-13	NVI	Y	Y	Y		157
125	GHIZER	PUNIAL	GB/41/13/001	M	66	02-09-13	7+	06-09-13		EV	N	Y	Y	DIED	171
126	BAJOUR	MAMUND	FT/33/13/007	M	45	02-01-13	7+	Late Notified			N	Y	Y	Y	414
127	BAJOUR	KHAR	FT/33/13/018	M	22	08-07-13	7+	23-08-13	24-08-13	NVI	Y	Y	Y		227
128	BAJOUR	MAMUND	FT/33/13/017	F	44	09-07-13	7+	13-08-13	14-08-13	EV	Y	N	N		226
129	BAJOUR	KHAR	FT/33/13/020	F	12	07-08-13	7+	07-09-13	08-09-13	EV	Y	Y	N		197
130	BAJOUR	MAMUND	FT/33/13/022	M	17	28-07-13	7+	12-09-13	13-09-13	NVI	N	Y	N		207
131	BAJOUR	KHAR	FT/33/13/023	F	48	15-08-13	7+	15-09-13	16-09-13	EV	N	N	Y		189
132	BAJOUR	KHAR	FT/33/13/024	M	36	18-08-13	7+	16-09-13	17-09-13	NVI	Y	Y	Y		186

€ Based on recall of parents

* Afp.rec Data as of 20-02-2014

60 days Follow-up not done

FUP = Residual Weakness at 60 days follow up.

Table 7.3: AFP CASES PENDING FOR CLASSIFICATION WITH DATE OF ONSET MORE THAN 90 DAYS* 2013 (4/4)

S. No	DISTRICT	TEHSIL	EPID	SEX	AGE	DONSET	DOSE€	DSTOOL1	DSTOOL2	LAB	FEVER	ASYM	PROG	FUP	PEND (DAYS)
133	BAJOUR	MAMUND	FT/33/13/032	M	18	04-09-13	7+	05-10-13	06-10-13	VACC	Y	Y	N		169
134	BAJOUR	SALARZAI	FT/33/13/042	F	84	12-11-13	7+	Late Notified			Y	N	Y		100
135	BAJOUR	NAWAGAI	FT/33/13/040	F	48	30-09-13	7+	25-11-13	26-11-13	VACC	Y	Y	N		143
136	FR BANNU	FR BANNU	FT/69/13/007	M	22	30-07-13	3	28-08-13	29-08-13	EV	Y	Y	Y		205
137	FR BANNU	FR BANNU	FT/69/13/012	M	9	10-08-13	0	22-09-13	23-09-13	EV	Y	Y	Y		194
138	FR BANNU	FR BANNU	FT/69/13/021	M	12	28-09-13	0	30-10-13	31-10-13	NVI	Y	Y	Y		145
139	KHYBER	JAMRUD	FT/34/13/002	F	24	18-01-13	7+	21-02-13	23-02-13	NVI	N	Y	Y	Y	398
140	KHYBER	JAMRUD	FT/34/13/017	M	14	08-06-13	0	16-06-13		NVI	Y	Y	Y	Y	257
141	KHYBER	BARA	FT/34/13/016	F	10	06-06-13	0	21-06-13	23-06-13	NVI	Y	Y	Y		259
142	KHYBER	BARA	FT/34/13/018	M	12	11-06-13	0	01-07-13	02-07-13	EV	Y	Y	Y		254
143	KHYBER	BARA	FT/34/13/021	F	18	13-07-13	0	25-07-13	29-07-13	NVI	N	N	Y		222
144	KHYBER	BARA	FT/34/13/037	M	13	26-09-13	0	11-10-13	12-10-13	NVI	Y	Y	Y		147
145	KHYBER	LANDI KOTAL	FT/34/13/039	M	18	09-10-13	7+	Late Notified			Y	N	Y		134
146	KHYBER	BARA	FT/34/13/043	F	36	17-10-13	1	08-11-13	09-11-13	EV	Y	Y	Y		126
147	KHYBER	LANDI KOTAL	FT/34/13/044	M	44	30-06-13	7+	Late Notified			Y	Y	Y	Y	235
148	KHYBER	LANDI KOTAL	FT/34/13/048	M	12	25-09-13	7+	Late Notified			Y	Y	Y	Y	148
149	KHYBER	LANDI KOTAL	FT/34/13/049	M	11	25-10-13	3	11-12-13	12-12-13	EV	N	N	Y		118
150	KHYBER	BARA	FT/34/13/052	F	60	20-11-13	0	21-12-13	22-12-13	NVI	UK	Y	Y		92
151	MOHMAND	UPPER MOHMAND	FT/35/13/003	F	18	18-04-13	7+	07-05-13	08-05-13	NVI	Y	Y	Y	Y	308
152	MOHMAND	UPPER MOHMAND	FT/35/13/008	M	26	08-05-13	7+	22-06-13	23-06-13	EV	Y	Y	Y		288
153	WAZIR-N	MIRAN SHAH	FT/64/13/007	M	48	25-04-13	5	10-05-13	12-05-13	NVI	Y	N	Y	Y	301
154	WAZIR-N	MIR ALI	FT/64/13/030	F	9	09-08-13	0	Late Notified			Y	N	N		195
155	WAZIR-N	MIR ALI	FT/64/13/042	M	7	03-07-13	0	29-08-13	30-08-13	EV	Y	N	Y		232
156	WAZIR-N	MIR ALI	FT/64/13/054	F	18	09-09-13	2	Late Notified			Y	N	Y		164
157	WAZIR-N	MIR ALI	FT/64/13/090	M	12	20-09-13	0	24-10-13	25-10-13	VACC	Y	Y	Y		153
158	WAZIR-N	MIR ALI	FT/64/13/101	F	10	20-10-13	0	07-11-13	09-11-13	NVI	Y	Y	Y		123
159	WAZIR-N	RAZMAK	FT/64/13/111	F	24	22-10-13	3	24-11-13	25-11-13	NVI	Y	N	Y		121
160	WAZIR-N	MIRAN SHAH	FT/64/13/122	F	13	15-09-13	0	Late Notified			Y	Y	Y	Y	158
161	WAZIR-N	MIRAN SHAH	FT/64/13/121	M	13	25-08-13	0	Late Notified			N	Y	Y	Y	179
162	WAZIR-N	MIRAN SHAH	FT/64/13/123	M	12	05-10-13	0	Late Notified			Y	Y	Y	Y	138
163	WAZIR-S	WANA	FT/65/13/006	F	26	13-07-13	7+	15-08-13	16-08-13	NVI	Y	Y	Y		222
164	WAZIR-S	LADHA	FT/65/13/012	F	36	01-10-13	1	21-10-13	22-10-13	EV	Y	Y	Y		142
165	WAZIR-S	WANA	FT/65/13/005	F	12	25-04-13	1	19-06-13	20-06-13	NVI	UK	N	UK		301
166	WAZIR-S	WANA	FT/65/13/010	F	23	21-09-13	5	27-09-13		NVI	Y	N	UK		152

€ Based on recall of parents
* Afp.rec Data as of 20-02-2014

60 days Follow-up not done

FUP = Residual Weakness at 60 days follow up.