



**World Health
Organization**

Weekly AFP Surveillance Update Pakistan

Week 7 (*Ended on 15th February, 2014*)

AFP Surveillance



National Surveillance Cell Federal EPI

World Health Organization Country Office,
Chak Shahzad, Park Road,
Islamabad, Pakistan

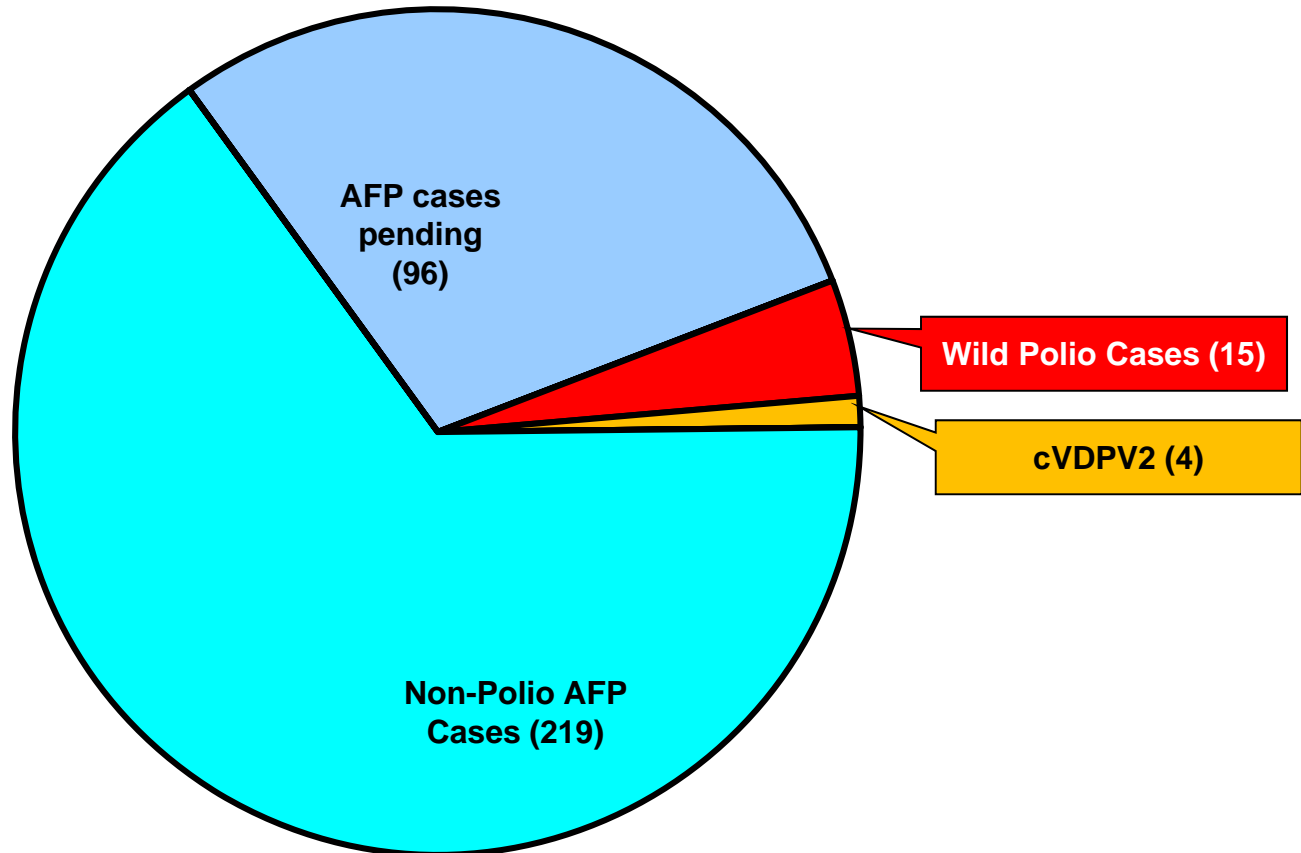
Tel: +92-51 9255123 / 9255282 /9255184

Fax: +92-51 9255274

Email: epidata@pak.emro.who.int

Web site: www.who.gov.pk

AFP Case Profile, 2014*



Total AFP Cases Reported = 334

**^3 Inadequate cases pending classification by ERC;
^9 Inadequate cases not due for FUP
^84 Pending in the Lab**

* Afp.rec Data as of 13-02-2014

Point in Time Comparison of polio cases by province/region 2012 & 2013*

Region/ Province	No. of polio cases		No. of infected districts/towns		Last polio case
	2013	2014	2013	2014	
Khyber Pakhtunkhwa	3	2	3	2	31-Jan -14
FATA / FR Areas	0	13	0	2	28-Jan -14
Sindh	1	0	1	0	31-Dec-13
Balochistan	0	0	0	0	02-Oct-12
Punjab	1	0	1	0	12-Dec-13
Pakistan	5	15	5	4	31-Jan-14

Three additional districts/town declared infected based on environmental samples in 2014

* Afp.rec Data as of 13-02-2014

Table 1: List of Confirmed Polio Cases, Pakistan 2013* (1/5)

S.NO.	PROVINCE/ REGION	DISTRICT	TEHSIL	EPID NO.	SEX	AGE (m)	DATE ONSET OF PARALYSIS	NO. OPV DOSES (based on parents recall)		FEVER	Asymmetric Paralysis	Rapid Progression	REFUSAL	W/PV TYPE	GENETICS
								Route	SIA's						Cluster
1	SINDH	BIN QASIM	BIN QASIM	SD/62/13/001	M	24	14-Jan-13	0	0	N	Y	Y	Y	NSL1	R4B
2	KP	BANNU	BANNU	NW/61/13/002	M	13	26-Jan-13	0	0	Y	N	Y	Y	NSL1	R4B
3	PUNJAB	MIWANWALI	ISAKHEL	PB/43/13/005	F	36	07-Feb-13	3	7+	Y	N	Y	N	NSL1	R4B
4	KP	MALAKAND	DARGAI	NW/20/13/006	F	3	08-Feb-13	2	2	Y	N	Y	N	NSL1	R4B
5	KP	MARDAN	MARDAN	NW/40/13/009	M	30	12-Feb-13	3	7+	Y	N	Y	N	NSL1	R4B
6	SINDH	DADU	MEHAR	SD/24/13/006	F	15	22-Mar-13	0	2	Y	N	Y	N	NSL1	R2B
7	KP	MARDAN	MARDAN	NW/40/13/026	M	8	22-Apr-13	0	0	Y	Y	Y	Y	NSL1	R4B
8	FATA	KHYBER\$	BARA	FT/34/13/008	M	10	24-Apr-13	2	4	Y	Y	N	N	NSL1	R4B
9	FATA	FR BANNU	FR BANNU	FT/69/13/001	M	16	03-May-13	0	3	Y	Y	Y	Y	NSL1	R4B
10	FATA	KHYBER\$	BARA	FT/34/13/010	M	8	10-May-13	0	0	Y	Y	Y	N	NSL1	R4B
11	FATA	KHYBER\$	BARA	FT/34/13/013	M	24	11-May-13	2	3	Y	N	Y	N	NSL1	R4B
12	FATA	KHYBER\$	BARA	FT/34/13/011	M	23	14-May-13	0	2	Y	Y	Y	N	NSL1	R4B
13	FATA	KHYBER\$	BARA	FT/34/13/012	M	4	16-May-13	0	0	Y	N	Y	N	NSL1	R4B
14	FATA	FR BANNU	FR BANNU	FT/69/13/002	F	22	19-May-13	0	7+	Y	N	Y	N	NSL1	R4B
15	FATA	KHYBER\$	BARA	FT/34/13/014	M	30	20-May-13	0	0	Y	N	Y	N	NSL1	R4A
16	FATA	WAZIR-N\$	MIR ALI	FT/64/13/010	M	9	24-May-13	0	0	Y	Y	Y	N	NSL1	R4B
17	PUNJAB	MBDIN	MALIKWAL	PB/24/13/013	F	96	26-May-13	3	7+	Y	Y	Y	N	NSL1	R4B
18	FATA	KHYBER\$	BARA	FT/34/13/015	M	15	06-June-13	0	0	Y	Y	Y	N	NSL1	R4B
19	FATA	WAZIR-N\$	MIR ALI	FT/64/13/014	F	11	15-June-13	0	0	Y	Y	Y	N	NSL1	R4B
20	FATA	KHYBER\$	BARA	FT/34/13/019	F	12	23-June-13	0	0	Y	N	Y	N	NSL1	R4B
21	KP	PESHAWAR	PESHAWAR	KP/30/13/042	M	12	30-June-13	0	0	Y	N	Y	Y	NSL1	R4B
22	FATA	KHYBER\$	BARA	FT/34/13/020	F	12	03-July-13	0	0	N	N	Y	N	NSL1	R4B

\$ Security compromised area

* Afp.rec Data as of 13-02-2014

Table 1.1: List of Confirmed Polio Cases, Pakistan 2013* (2/5)

S.NO.	PROVINCE/ REGION	DISTRICT	TEHSIL	EPID NO.	SEX	AGE (m)	DATE ONSET OF PARALYSIS	NO. OPV DOSES (based on parents recall)		FEVER	Asymmetric Paralysis	Rapid Progression	REFUSAL	WPV TYPE	GENETICS
								Route	SIA's						Cluster
23	SINDH	KHIGADDAP	GADDAP	SD/63/13/015	F	12	09-July-13	3	6	Y	Y	Y	N	NSL1	R4B
24	FATA	WAZIR-N\$	MIRAN SHAH	FT/64/13/018	F	18	13-July-13	0	0	Y	Y	Y	N	NSL1	R4B
25	FATA	FR BANNU	FR BANNU	FT/69/13/006	M	18	27-July-13	0	7+^	Y	N	Y	N	NSL1	R4B
26	FATA	WAZIR-N\$	MIR ALI	FT/64/13/032	F	21	05-Aug-13	0	0	Y	Y	Y	N	NSL1	R4B
27	FATA	WAZIR-N\$	RAZMAK	FT/64/13/033	M	11	11-Aug-13	0	0	Y	Y	Y	N	NSL1	R4B
28	KP	KOHAT	KOHAT	KP/50/13/017	F	10	19-Aug-13	0	5	Y	Y	Y	N	NSL1	R4B
29	FATA	WAZIR-N\$	RAZMAK	FT/64/13/044	M	8	24-Aug-13	0	0	Y	N	Y	N	NSL1	R4B
30	FATA	FR DIKHAN	FR DIKHAN	FT/68/13/001	M	36	26-Aug-13	1	1	Y	N	Y	N	NSL1	R4B
31	FATA	KHYBER\$	BARA	FT/34/13/027	F	13	30-Aug-13	0	2	Y	Y	Y	N	NSL1	R4A
32	FATA	KHYBER\$	LANDI KOTAL	FT/34/13/028	M	18	30-Aug-13	0	0	Y	Y	Y	N	NSL1	R4A
33	KP	PESHAWAR	PESHAWAR	KP/30/13/068	M	6	31-Aug-13	0	0	Y	Y	Y	N	NSL1	R4B
34	FATA	WAZIR-N\$	MIR ALI	FT/64/13/050	F	13	01-Sep-13	0	0	Y	Y	Y	N	NSL1	R4B
35	FATA	WAZIR-N\$	MIRAN SHAH	FT/64/13/051	F	11	05-Sep-13	0	0	Y	Y	Y	N	NSL1	R4B
36	FATA	KHYBER\$	LANDI KOTAL	FT/34/13/032	F	8	05-Sep-13	0	4	Y	Y	Y	N	NSL1	R4A
37	FATA	WAZIR-N\$	RAZMAK	FT/64/13/053	F	17	06-Sep-13	0	0	Y	Y	Y	N	NSL1	R4B
38	FATA	WAZIR-N\$	MIR ALI	FT/64/13/055	F	7	08-Sep-13	1	0	Y	Y	Y	N	NSL1	R4B
39	KP	SWABI	SWABI	KP/41/13/037	F	2	10-Sep-13	0	0	Y	Y	Y	N	NSL1	R4B
40	FATA	KHYBER\$	BARA	FT/34/13/029	M	11	10-Sep-13	3	7+	Y	Y	Y	N	NSL1	R4B
41	FATA	WAZIR-N\$	MIR ALI	FT/64/13/056	M	10	10-Sep-13	3	0	Y	Y	Y	N	NSL1	R4B
42	SINDH	KHIGADAP	GADAP	SD/63/13/022	M	12	19-Sep-13	0	6^	Y	Y	Y	N	NSL1	R4B
43	FATA	WAZIR-N\$	MIR ALI	FT/64/13/068	F	16	20-Sep-13	0	0	Y	Y	Y	N	NSL1	R4B
44	FATA	WAZIR-N\$	MIR ALI	FT/64/13/069	F	12	20-Sep-13	0	0	Y	Y	Y	N	NSL1	R4B

\$ Security compromised area

^Under investigation

* Afp.rec Data as of 13-02-2014

Table 1.2: List of Confirmed Polio Cases, Pakistan 2013* (3/5)

S.NO.	PROVINCE/ REGION	DISTRICT	TEHSIL	EPID NO.	SEX	AGE (m)	DATE ONSET OF PARALYSIS	NO. OPV DOSES (based on parents recall)		FEVER	Asymmetric Paralysis	Rapid Progression	REFUSAL	WPV TYPE	GENETICS
								Route	SIA's						Cluster
45	FATA	FR BANNU	FR BANNU	FT/69/13/013	F	12	22-Sep-13	0	0	Y	Y	Y	N	NSL1	R4B
46	FATA	KHYBER\$	BARA	FT/34/13/030	M	15	24-Sep-13	3	0	Y	Y	Y	N	NSL1	R4B
47	KP	PESHAWAR	PESHAWAR	KP/30/13/079	M	8	24-Sep-13	3	7^	Y	N	Y	N	NSL1	R4B
48	FATA	KHYBER\$	BARA	FT/34/13/033	M	30	26-Sep-13	3	3	Y	Y	Y	N	NSL1	R4A
49	FATA	WAZIR-N\$	MIR ALI	FT/64/13/071	M	8	26-Sep-13	0	0	Y	Y	Y	N	NSL1	R4B
50	PUNJAB	SHEIKUPURA	MURIDKE	PB/33/13/057	M	12	26-Sep-13	0	2	Y	N	Y	N	NSL1	R4B
51	FATA	FR BANNU	FR BANNU	FT/69/13/016	F	24	28-Sep-13	0	0	Y	Y	Y	N	NSL1	R4B
52	FATA	WAZIR-N\$	MIR ALI	FT/64/13/074	F	37	28-Sep-13	0	0	Y	Y	Y	N	NSL1	R4B
53	FATA	FR BANNU	FR BANNU	FT/69/13/017	M	11	01-Oct-13	0	0	Y	Y	Y	N	NSL1	R4B
54	SINDH	KASHMORE	TANGWANI	SD/54/13/010	F	10	03-Oct-13	2	5	N	N	N	N	NSL1	R3B
55	FATA	KHYBER\$	LANDI KOTAL	FT/34/13/036	M	12	05-Oct-13	0	7^	Y	Y	Y	N	NSL1	R4B
56	PUNJAB	TTSINGH	KAMALIA	PB/52/13/045	M	9	09-Oct-13	3	4	Y	N	Y	N	NSL1	R4B
57	FATA	WAZIR-N\$	MIR ALI	FT/64/13/084	F	18	09-Oct-13	0	0	Y	Y	Y	N	NSL1	R4B
58	FATA	WAZIR-N\$	RAZMAK	FT/64/13/083	M	15	11-Oct-13	0	0	Y	Y	Y	N	NSL1	R4B
59	FATA	WAZIR-N\$	MIR ALI	FT/64/13/087	F	13	14-Oct-13	0	0	Y	Y	Y	N	NSL1	R4B
60	FATA	KHYBER\$	BARA	FT/34/13/040	M	9	15-Oct-13	0	0	Y	Y	Y	N	NSL1	R4A
61	FATA	WAZIR-N\$	MIR ALI	FT/64/13/086	M	15	16-Oct-13	0	0	Y	Y	Y	N	NSL1	R4B
62	SINDH	BIN QASIM	BIN QASIM	SD/62/13/011	M	8	18-Oct-13	3	1	Y	Y	Y	N	NSL1	R4B
63	PUNJAB	TTSINGH	KAMALIA	PB/52/13/046	F	13	21-Oct-13	1	5	Y	Y	Y	N	NSL1	R4B
64	PUNJAB	SAHIWAL	SAHIWAL	PB/65/13/047	M	15	21-Oct-13	3	6	Y	N	Y	N	NSL1	R4B
65	FATA	WAZIR-N\$	MIRAN SHAH	FT/64/13/093	M	24	25-Oct-13	0	0	Y	Y	Y	N	NSL1	R4B
66	KP	PESHAWAR	PESHAWAR	KP/30/13/088	M	9	26-Oct-13	0	7^	Y	Y	Y	N	NSL1	R4B

\$ Security compromised area

^Under investigation

* Afp.rec Data as of 13-02-2014

Table 1.3: List of Confirmed Polio Cases, Pakistan 2013* (4/5)

S.NO.	PROVINCE/ REGION	DISTRICT	TEHSIL	EPID NO.	SEX	AGE (m)	DATE OF ONSET PARALYSIS	NO. OPV DOSES (based on parents recall)		FEVER	Asymmetric Paralysis	Rapid Progression	REFUSAL	WPV TYPE	GENETICS
								Route	SIA's						Cluster
67	FATA	KHYBER\$	LANDI KOTAL	FT/34/13/046	M	16	01-Nov-13	0	7^	Y	Y	Y	N	NSL1	R4B
68	FATA	FR BANNU	FR BANNU	FT/69/13/023	M	14	04-Nov-13	0	0	Y	Y	Y	N	NSL1	R4B
69	FATA	KHYBER\$	LANDI KOTAL	FT/34/13/047	M	12	06-Nov-13	0	0	Y	N	Y	N	NSL1	R4A
70	SINDH	BALDIA	BALDIA	SD/61/13/011	F	4	09-Nov-13	0	0	Y	N	Y	N	NSL1	R4B
71	FATA	WAZIR-N\$	MIRAN SHAH	FT/64/13/107	F	24	11-Nov-13	0	0	Y	N	Y	N	NSL1	R4B
72	FATA	WAZIR-N\$	MIR ALI	FT/64/13/109	M	24	12-Nov-13	0	0	Y	Y	Y	N	NSL1	R4B
73	FATA	WAZIR-N\$	MIRAN SHAH	FT/64/13/113	M	12	15-Nov-13	0	0	Y	Y	Y	N	NSL1	R4B
74	FATA	WAZIR-N\$	MIRAN SHAH	FT/64/13/106	F	36	16-Nov-13	0	0	Y	N	Y	N	NSL1	R4B
75	FATA	WAZIR-N\$	MIR ALI	FT/64/13/116	M	11	26-Nov-13	0	0	Y	Y	Y	N	NSL1	R4B
76	FATA	WAZIR-N\$	MIRAN SHAH	FT/64/13/119	M	11	28-Nov-13	0	0	Y	N	Y	N	NSL1	R4B
77	FATA	WAZIR-N\$	MIRAN SHAH	FT/64/13/120	F	12	01-Dec-13	1	0	Y	Y	Y	N	NSL1	R4B
78	FATA	WAZIR-N\$	MIRAN SHAH	FT/64/13/124	M	10	04-Dec-13	0	0	Y	Y	Y	N	NSL1	R4B
79	FATA	WAZIR-S\$	WANA	FT/65/13/014	F	12	04-Dec-13	0	0	Y	Y	Y	N	NSL1	R4B
80	FATA	WAZIR-N\$	MIR ALI	FT/64/13/125	F	18	08-Dec-13	0	0	Y	N	Y	N	NSL1	R4B
81	FATA	WAZIR-N\$	MIRAN SHAH	FT/64/13/126	F	18	09-Dec-13	0	0	Y	Y	Y	N	NSL1	R4B
82	FATA	WAZIR-N\$	MIR ALI	FT/64/13/127	M	24	10-Dec-13	0	0	Y	Y	Y	N	NSL1	R4B
83	SINDH	BALDIA	BALDIA	SD/61/13/012	M	24	10-Dec-13	2	4	Y	Y	Y	N	NSL1	R4B
84	SINDH	KHIGIQBAL	G-IQBAL	SD/65/13/017	F	13	11-Dec-13	2	7^	Y	Y	Y	N	NSL1	R4B
85	PUNJAB	TTSINGH	KAMALIA	PB/52/13/058	M	14	12-Dec-13	3	7^	Y	N	Y	N	NSL1	R4B
86	FATA	WAZIR-S\$	LADHA	FT/65/13/015	M	15	16-Dec-13	0	0	Y	Y	Y	N	NSL1	R4B
87	FATA	WAZIR-N\$	MIRAN SHAH	FT/64/13/131	M	24	16-Dec-13	0	0	Y	Y	Y	N	NSL1	R4B
88	FATA	WAZIR-N\$	MIRAN SHAH	FT/64/13/132	M	15	22-Dec-13	0	0	Y	Y	Y	N	NSL1	R4B

\$ Security compromised area

New Case

^Under investigation

* Afp.rec Data as of 13-02-2014

Table 1.4: List of Confirmed Polio Cases, Pakistan 2013* (5/5)

S.NO.	PROVINCE/ REGION	DISTRICT	TEHSIL	EPID NO.	SEX	AGE (m)	DATE ONSET OF PARALYSIS	NO. OPV DOSES (based on parents recall)		FEVER	Asymmetric Paralysis	Rapid Progression	REFUSAL	WPV TYPE	GENETICS
								Route	SIA's						Cluster
89	FATA	WAZIR-N\$	MIRAN SHAH	FT/64/13/133	M	18	22-Dec-13	0	0	Y	Y	Y	N	NSL1	R4B
90	FATA	WAZIR-N\$	MIRAN SHAH	FT/64/13/134	F	18	26-Dec-13	0	0	Y	Y	Y	N	NSL1	R4B
91	FATA	KHYBER\$	BARA	FT/34/13/055	M	15	28-Dec-13	3	0	Y	Y	Y	N	NSL1	R4B
92	KP	PESHAWAR	PESHAWAR	KP/30/13/121	F	11	31-Dec-13	3	0	Y	Y	Y	N	NSL1	R4B
93	SINDH	KHILANDHI	LANDHI	SD/69/13/012	M	2	31-Dec-13	0	0	Y	N	Y	N	NSL1	R4B

\$ Security compromised area

New Case

^Under investigation

* Afp.rec Data as of 13-02-2014

Table 1: List of Confirmed Polio Cases, Pakistan 2014* (1/1)

S.NO.	PROVINCE/ REGION	DISTRICT	TEHSIL	EPID NO.	SEX	AGE (m)	DATE OF ONSET PARALYSIS	NO. OPV DOSES (based on parents recall)		FEVER	Asymmetric Paralysis	Rapid Progression	REFUSAL	W/PV TYPE	GENETICS
								Route	SIA's						Cluster
1	FATA	WAZIR-N\$	MIR ALI	FT/64/14/006	F	19	03-Jan-14	0	0	Y	Y	Y	N	NSL1	R4B
2	FATA	WAZIR-N\$	MIR ALI	FT/64/14/003	M	14	03-Jan-14	0	0	Y	Y	Y	N	NSL1	R4B
3	FATA	WAZIR-N\$	MIR ALI	FT/64/14/007	F	8	04-Jan-14	0	0	Y	Y	Y	N	NSL1	R4B
4	FATA	WAZIR-N\$	MIRAN SHAH	FT/64/14/004	F	13	04-Jan-14	0	0	Y	Y	Y	N	NSL1	R4B
5	FATA	WAZIR-N\$	MIRAN SHAH	FT/64/14/005	F	17	05-Jan-14	0	0	Y	Y	Y	N	NSL1	R4B
6	FATA	WAZIR-N\$	MIRAN SHAH	FT/64/14/011	F	12	10-Jan-14	0	0	Y	Y	Y	N	NSL1	R4B
7	FATA	WAZIR-N\$	MIR ALI	FT/64/14/012	M	23	16-Jan-14	0	0	Y	Y	Y	N	NSL1	R4B
8	FATA	WAZIR-N\$	MIRAN SHAH	FT/64/14/016	M	10	17-Jan-14	0	0	Y	Y	Y	N	NSL1	R4B
9	FATA	WAZIR-N\$	MIRAN SHAH	FT/64/14/021	M	16	25-Jan-14	0	0	Y	Y	Y	N	NSL1	
10	FATA	WAZIR-N\$	MIR ALI	FT/64/14/018	M	12	11-Jan-14	0	0	Y	Y	Y	N	NSL1	
11	FATA	WAZIR-N\$	MIRAN SHAH	FT/64/14/017	M	17	22-Jan-14	0	0	Y	Y	Y	N	NSL1	
12	KPAKHTUNKHWA	BANNU	BANNU	KP/61/14/001	M	39	26-Jan-14	0	10^	Y	N	Y	N	NSL1	
13	FATA	WAZIR-N\$	MIR ALI	FT/64/14/024	M	18	28-Jan-14	0	0	Y	Y	Y	N	NSL1	
14	KPAKHTUNKHWA	PESHAWAR	PESHAWAR	KP/30/14/008	M	6	31-Jan-14	3	3	Y	Y	Y	N	NSL1	
15	FATA	KHYBER\$	BARA	FT/34/14/003	F	13	12-Jan-14	0	0	Y	Y	Y	N	NSL1	

\$ Security compromised area

New Case

^Under investigation

* Afp.rec Data as of 13-02-2014

Table 2: LAB Update 2013*

Month of Onset	AFP Cases	No virus isolated	Cases Under Process		Isolated Viruses from stools						
			Culture	ITD	Vaccine viruses		NPEV		Wild	Results within 14 days	
			n	n	n	n	n	%	n	%	n
January	333	275	0	0	19	6	37	11%	2	333	100%
February	330	285	0	0	16	5	26	8%	3	330	100%
March	308	248	0	0	7	2	52	17%	1	308	100%
April	352	244	0	0	22	6	84	24%	2	352	100%
May	419	304	0	0	15	4	91	22%	9	419	100%
June	469	326	0	0	21	4	118	25%	4	469	100%
July	391	239	0	0	13	3	135	35%	4	391	100%
August	458	292	0	0	23	5	135	29%	8	458	100%
September	466	297	0	0	32	7	119	26%	19	467	100%
October	407	307	0	0	25	6	63	15%	14	409	100%
November	373	272	0	0	27	7	65	17%	10	374	100%
December	363	276	2	0	17	5	53	15%	17	363	100%
Pakistan	4669	3365	2	0	237	5	978	21%	93	4673	100%
January	370	332	34	4	22	6	63	17%	15	432	117%
February	62	2	60	0	0	0	0	0%	0	2	3%
Pakistan	432	334	94	4	22	5	63	15%	15	434	100%

* Data as of 17-02-2014

Table 3: Urgent / ITD Pending Cases (1/1)

S. #	District	Tehsil	Basic information							OPV doses				Urgent		Prov Diagnosis	Lab update			Remarks
			Union council	Epid number	Date of Onset	Age (M)	Sex	Date of 1st stool	Stool Adeq	RI	SIAs	Last 6 SIAs	Last dose	By Field	By NSC \ddagger		Lab No.	Days Inoc	Culture update	
Isolates pending for ITSD																				
1	FR BANNU	FR BANNU	JANI KHEL	FT/69/14/002	27-Jan-14	12	F	30-Jan-14	Y	0	2	0	10-Mar-13	Y	Y	SUSPECTED POLIO	406	5	P2	Discordant $\text{\textcircled{O}}$
2	WAZIR-N	MIRAN SHAH	TOOR TANGAI	FT/64/14/019	24-Jan-14	18	F	27-Jan-14	Y	0	0	0		Y	Y	POLIOMELITIS	399	5	P1	Discordant $\text{\textcircled{O}}$
3	WAZIR-N	MIRAN SHAH	SPALGA	FT/64/14/022	29-Jan-14	12	F	31-Jan-14	N	0	0	0		Y	Y	SUSPECTED POLIO	419	5	P1	Discordant $\text{\textcircled{O}}$
4	BANNU	BANNU	SIKANDER KHEL	KP/61/14/002	25-Jan-14	19	M	02-Feb-14	Y	2	7+	6	21-Jan-14	N	N	PSUDO PARALYSIS	408	5	L20B+	
Reported urgent (by field / NSC\ddagger criteria)																				
5	LORALAI	LORALAI	CIRCLE3	BN/22/14/002	28-Jan-14	39	M	06-Feb-14	Y	3	7+	6	20-Jan-14	Y	N	INI NEURITIS/POLIOMYELITIS	471	7	UP	
6	WAZIR-N	MIRAN SHAH	MIZER	FT/64/14/027	07-Feb-14	12	M	08-Feb-14	Y	0	0	0		Y	Y	POLIO	512	5	UP	
7	MALAKAND	DARGAI	VERTAIR	KP/20/14/004	02-Feb-14	144	F	06-Feb-14	Y	3	UK	-		Y	N	BILATERAL MYOPATHY	466	9	UP	
8	DGKHAN	DGKHAN	NAWAN	PB/81/14/009	01-Feb-14	8	M	04-Feb-14	Y	1	5	5	20-Jan-14	N	Y	TRAUMATIC NEURITIS	482	7	UP	
9	SIALKOT	SIALKOT	MIANAPURA	PB/25/13/067	26-Dec-13	85	M	06-Feb-14	N	3	7+	-		N	N	TRAUMATIC NEURITIS	488	7	UP	

* New addition § New results #Data not available † NSC Criteria = Fever, Rapid Progress, Age < 48 months and OPV Doses < 7 UP = Under process

Urgent (Field/NSC) / Inadequate specimens / Age 12-35 months / Zero OPV dose $\text{\textcircled{O}}$ Pending for genomic sequencing

Environmental Surveillance Results, Pakistan (Last 52 weeks)

Sites	Proportion of Positive					Last 52 weeks				2014																											
	2011	2012	2013	2014		Samples n	Positive n	Negative n	UP ⁿ																												
	%	%	%	n	%					Feb	Mar	Apr	May	Jun	Jul	Aug	Sep	Oct	Nov	Dec	Jan	Feb															
MULTAN	58	11	6	0	0	35	2	32	1																												
Ali Town	50	17	8	0		12	1	11	0																												
Kotla A. Fateh	50	8	0	0		12	0	11	1																												
Suraj Miani	75	8	8	0	0	11	1	10	0																												
LAHORE	53	50	7	0	0	56	4	52	0																												
Gulshan Ravi Station	42	42	8	0	0	11	1	10	0																												
Multan Road Station	58	50	8	0		12	1	11	0																												
Outfall Pump Station F	58	58	0	0	0	11	0	11	0																												
Outfall Pump Station G			8	0	0	11	1	10	0																												
Outfall Pump Station H			8	0	0	11	1	10	0																												
FAISALABAD	3	2	0	0		34	0	33	1																												
Pump Station 03	8	6	0	0		11	0	11	0																												
Pump Station 27		0	0	0		11	0	11	0																												
Ismail City Road	0	0	0			12	0	11	1																												
RAWALPINDI	92	58	50	0	###	12	6	5	1																												
Safdarabad	92	58	50	0		12	6	5	1																												
PUNJAB	61	33	9	0	###	137	13	122	3																												
KHI (BALDIA)	46	4	13	1	100	23	4	18	1																												
Kumhar Wara	58	8	0	1	100	11	1	10	0																												
Sajjan Goth	33	0	25	0		12	3	8	1																												
KHI (G.IQBAL)	58	17	21	1	50	24	6	17	1																												
Chakora Nulla	50	25	0	0	0	12	0	11	1																												
Rashid Minhas Rd	67	8	42	1	100	12	6	6	0																												
KHI (GADAAP)	88	67	41	1	50	34	14	19	1																												
Khamiso Goth	92	50	8	0		11	1	10	0																												
Macchar Colony			70	1	100	11	8	3	0																												
Sorab Goth	83	83	50	0		12	5	6	1																												
SUKKUR	41	0	0	0		24	0	22	2																												
Makka P.Station	38	0	0	0		12	0	11	1																												
Miani P.Station	44	0	0			12	0	11	1																												
HYDERABAD	100	58	0	0		11	5	6	0																												
Tulsidas P. Station	100	58	0	0		11	5	6	0																												
SINDH	64	36	25	3	43	116	19	82	5																												
PESHAWAR	79	83	88	2	100	23	20	3	0																												
Lara Ma	67	75	75	1		12	9	3	0																												
Shaheen Town	92	92	100	1	100	11	11	0	0																												
KP	79	83	88	2	100	23	20	3	0																												
QUETTA				0		34	2	30	2																												
Jam-e-Salfia	75	17	0	0	0	11	0	11	0																												
Killi Jattak	92	17	9	0		11	1	9	1																												
Surpul		0	8	0		12	1	10	1																												
BALUCHISTAN	83	14	6	0	0	34	3	30	2																												
PAKISTAN	67	37	20	5	50	310	63	237	10																												

Comparison environmental sampling results 2012-13*

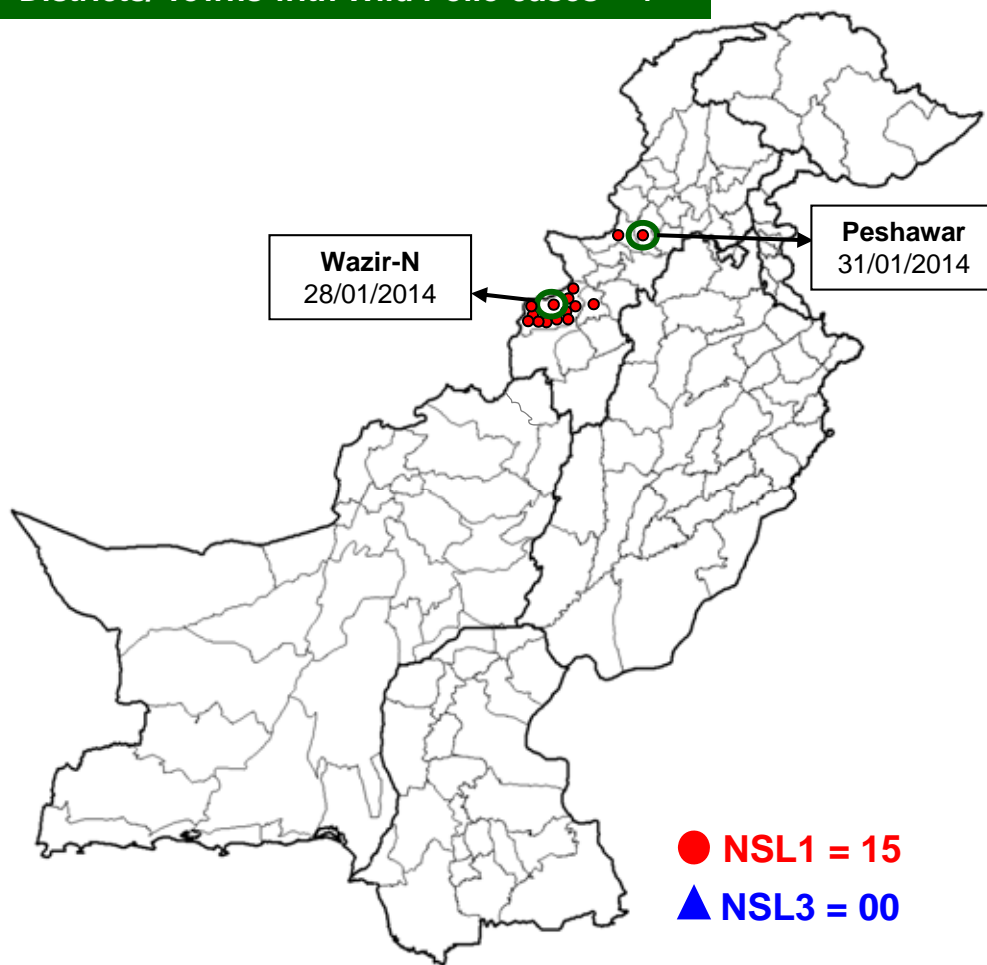
DISTRICT	2012			2013			Last
	TOTAL	WILD		TOTAL	WILD		
	n	n	%	n	n	%	
LAHORE	36	18	50%	60	4	7%	12-Dec-13
MULTAN	36	4	11%	36	2	6%	09-Dec-13
RAWALPINDI	12	7	58%	12	6	42%	25-Nov-13
FAISALABAD	8	1	13%	36	1	3%	03-Jan-13
KHIGIQBAL	24	4	17%	24	5	17%	18-Dec-13
KHIGADAP	24	16	67%	34	14	38%	20-Dec-13
KHIBALDIA	24	1	4%	24	3	8%	23-Dec-13
SUKKUR	17	7	41%	24	0	0%	05-Sep-12
HYDERABAD	6	6	100%	12	7	58%	12-Aug-13
PESHAWAR	24	20	83%	24	21	83%	27-Dec-13
QUETTA	28	4	14%	35	2	3%	28-Dec-13
PAKISTAN	239	88	37%	321	65	18%	28-Dec-13

* Data as of 13-02-2014

Data source Polio RRL

Map1: Distribution of Wild Polio cases Pakistan 2014*

Districts/ Towns with Wild Polio cases = 4



Province/ Country	Date of Last Case		Number of cases 2013	
	P1	P3	P1	P3
PUNJAB	-	Jun, 2010	-	-
SINDH	-	Jan, 2010	-	-
KHYBER- PAKHTUNKHWA	Jan, 2014	Oct, 2010	2	-
FATA	Jan, 2014	Apr, 2012	13	-
BALUCHISTAN	-	Apr, 2010	-	-
AJK	-	Jun, 2000	-	-
GILGIT-BALTISTAN	-	-	-	-
ISLAMABAD	-	Sep, 2008	-	-
PAKISTAN	Jan, 2014	Apr, 2012	15	-

○ District with last polio case in province

Cases randomly placed
in districts

— Provincial Boundary
— Districts Boundary

* Afp.rec Data as of 13-02-2014

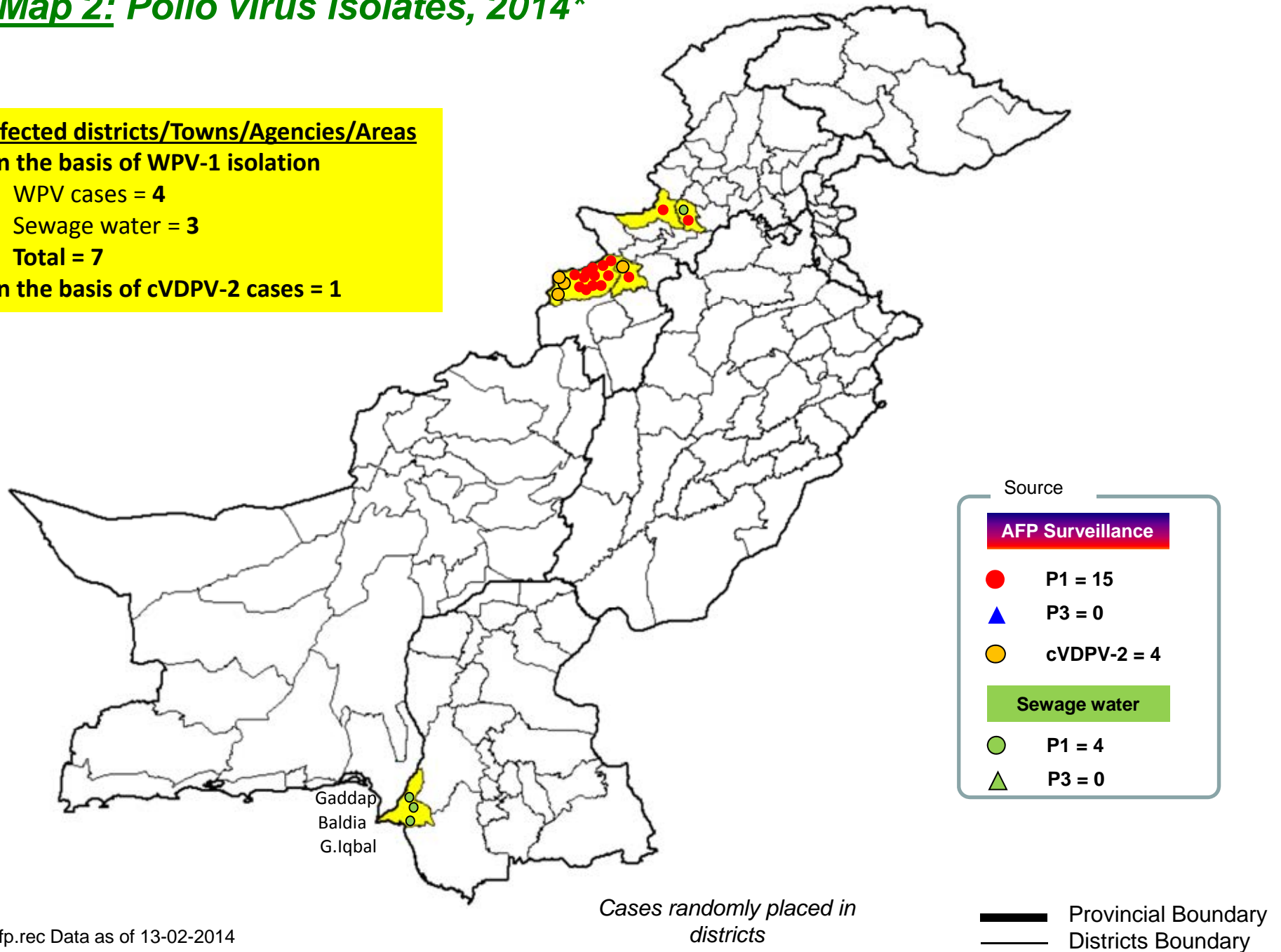
Map 2: Polio virus isolates, 2014*

Infected districts/Towns/Agencies/Areas

On the basis of WPV-1 isolation

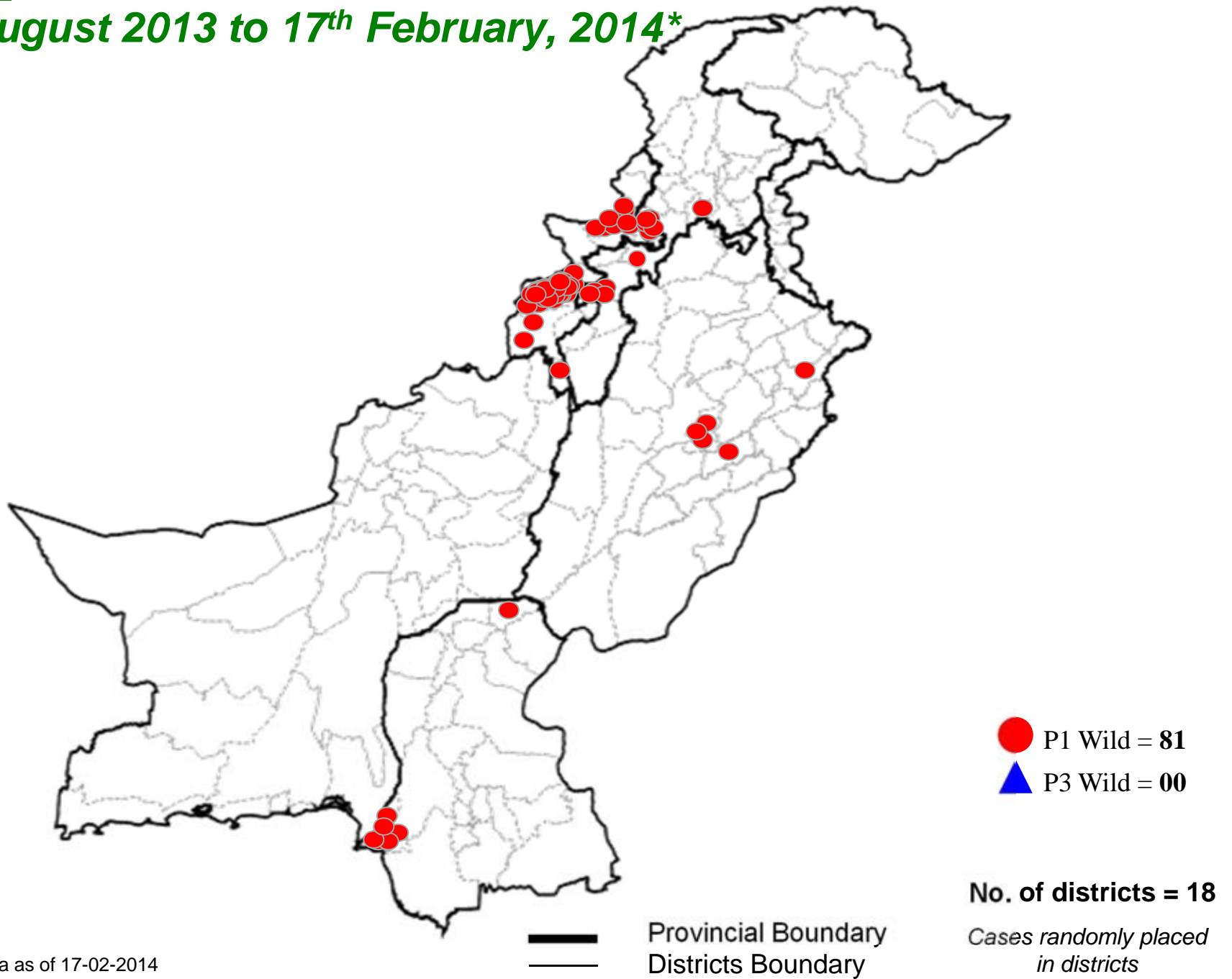
- WPV cases = 4
- Sewage water = 3
- Total = 7

On the basis of cVDPV-2 cases = 1



* Afp.rec Data as of 13-02-2014

Map 3: Wild Polio cases in the last 6 months from 18th August 2013 to 17th February, 2014*



* Afp.rec Data as of 17-02-2014

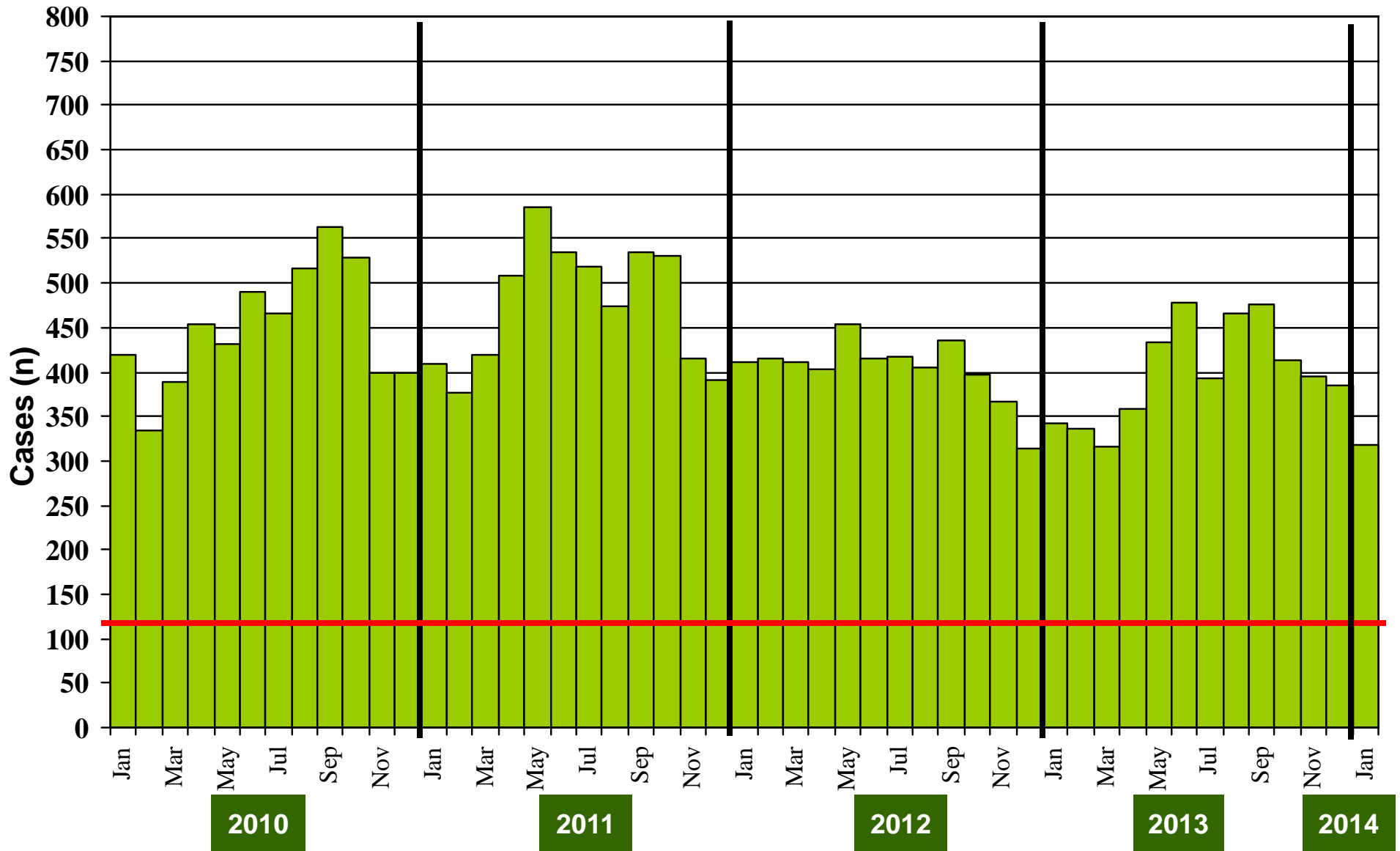
**Table 4: Distribution of AFP Cases By Week of Onset ^
Pakistan 2013-14* [Week number/Ending on]**

PROVINCE	W 44 02 Nov 2013	W 45 09 Nov 2013	W 46 16 Nov 2013	W 47 23 Nov 2013	W 48 30 Nov 2013	W 49 07 Dec 2013	W 50 14 Dec 2013	W 51 21 Dec 2013	W 52 28 Dec 2013	W 01 04 Jan 2014	W 02 11 Jan 2014	W 03 18 Jan 2014	W 04 25 Jan 2014	W 05 01 Jan 2014	W 06 08 Jan 2014
PUNJAB	45	43	35	43	29	35	40	22	49	30	31	50	51	30	9
SINDH	11	19	18	24	21	15	18	13	16	9	18	17	18	6	5
KP	26	18	18	18	23	19	19	19	23	12	19	12	16	14	11
FATA	10	3	12	8	4	7	5	5	9	8	7	7	6	9	2
BALUCHISTAN	4	5	3	11	3	5	5	3	4	1	4	5	6	7	0
AJK	1	2	0	1	1	2	0	0	2	1	2	0	1	0	0
GILGIT BILTISTAN	0	1	1	0	1	1	0	0	0	0	0	0	0	0	0
ISLAMABAD	0	0	0	0	0	0	0	0	1	0	0	0	0	0	0
PAKISTAN	97	91	87	105	82	84	87	62	104	61	81	91	98	66	27

* Afp.rec & Afplab.rec: Data as of 13-02-2014

^ MMWR Epidemiological Weeks

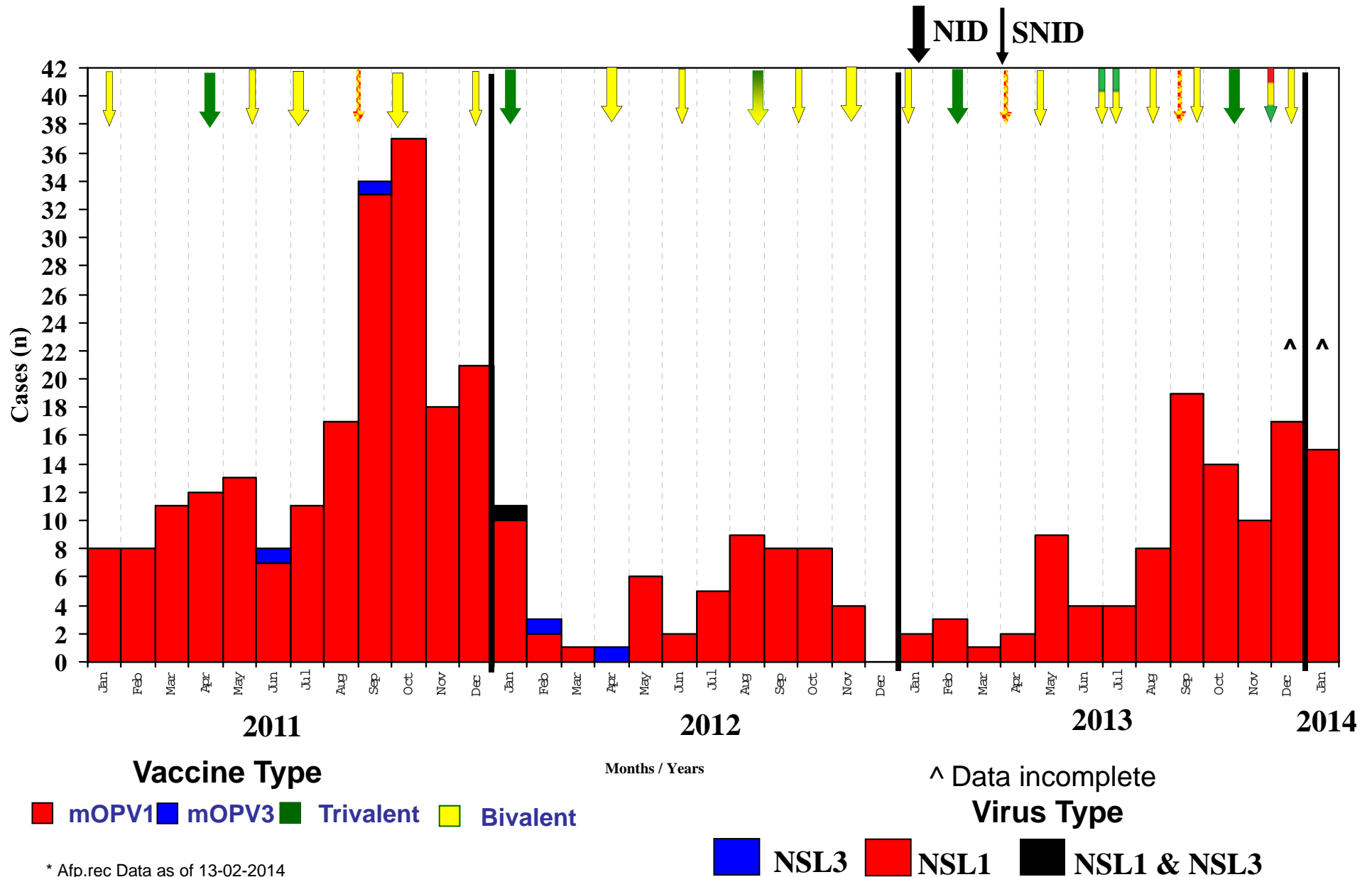
Graph 1: Distribution of AFP Cases by Month, Pakistan 2010-2014*



@ Non-polio AFP rate of 2/100,000 children < 15 years

* Afp.rec Data as of 13-02-2014

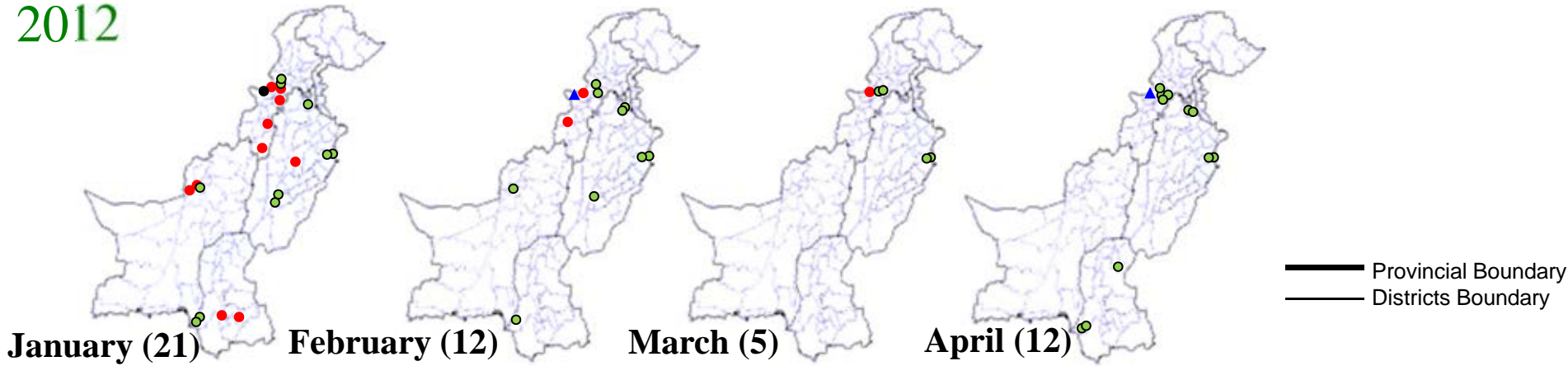
Confirmed Polio Cases By Poliovirus Type, 2011-2014*



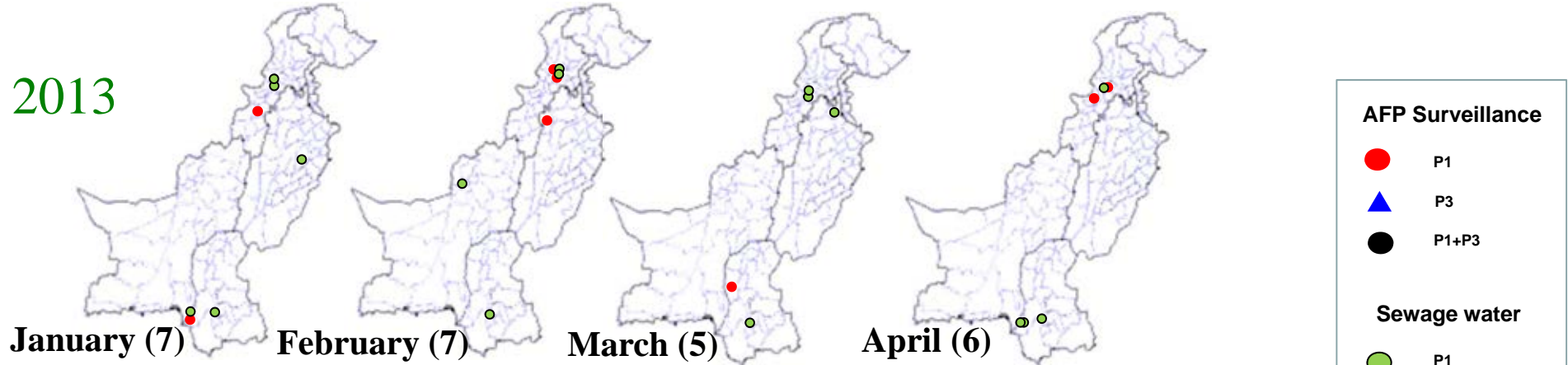
* Afp.rec Data as of 13-02-2014

Map 4: Monthly Comparison of P1 & P3 Polio Cases/Isolates 2012-2014*

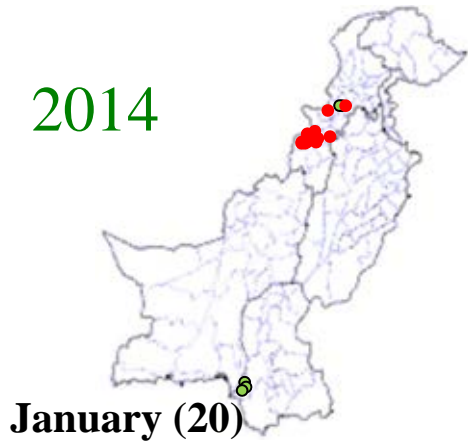
2012



2013



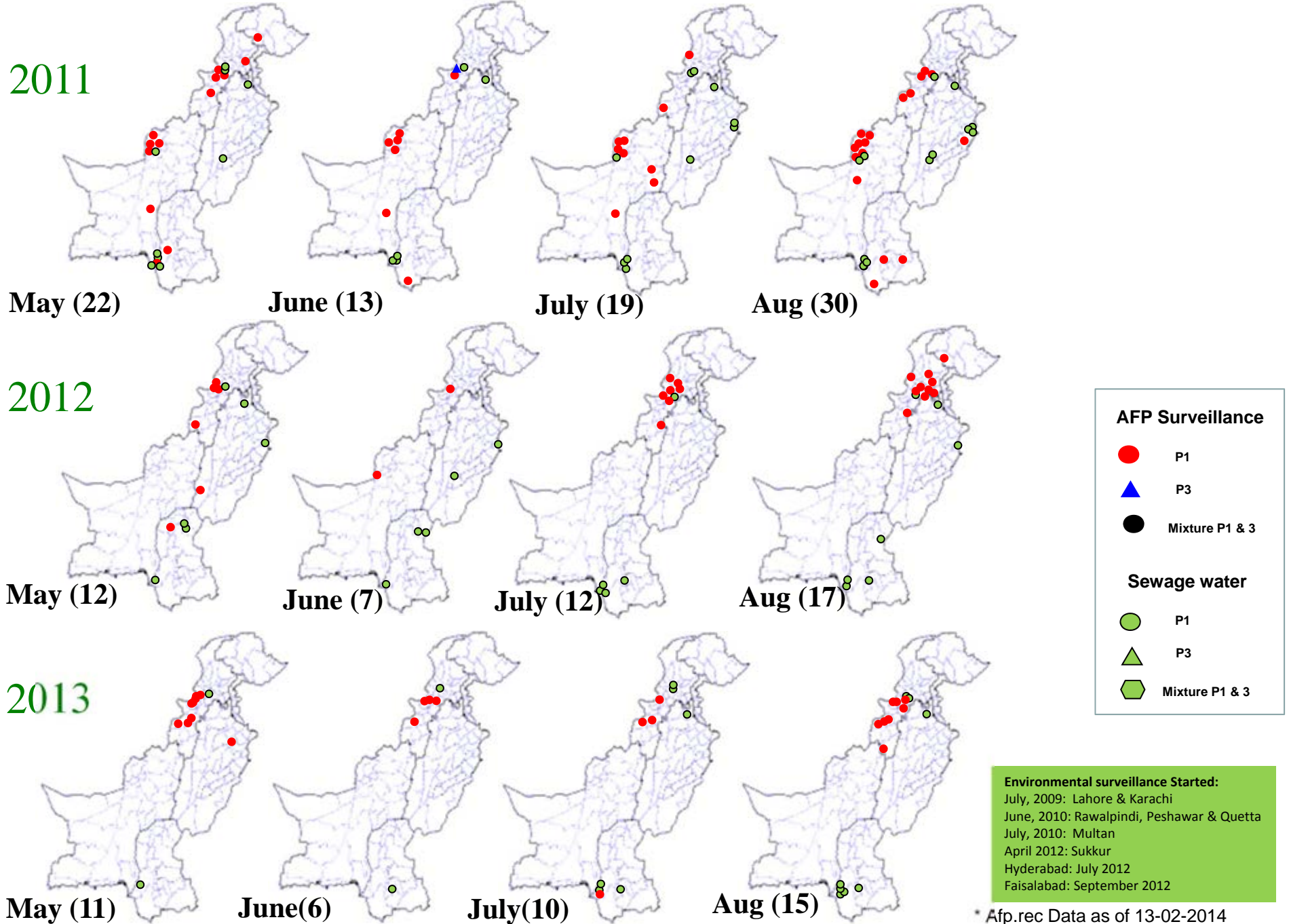
2014



Environmental surveillance Started:
 July, 2009: Lahore & Karachi
 June, 2010: Rawalpindi, Peshawar & Quetta
 July, 2010: Multan
 April 2012: Sukkur
 Hyderabad: July 2012
 Faisalabad: September 2012

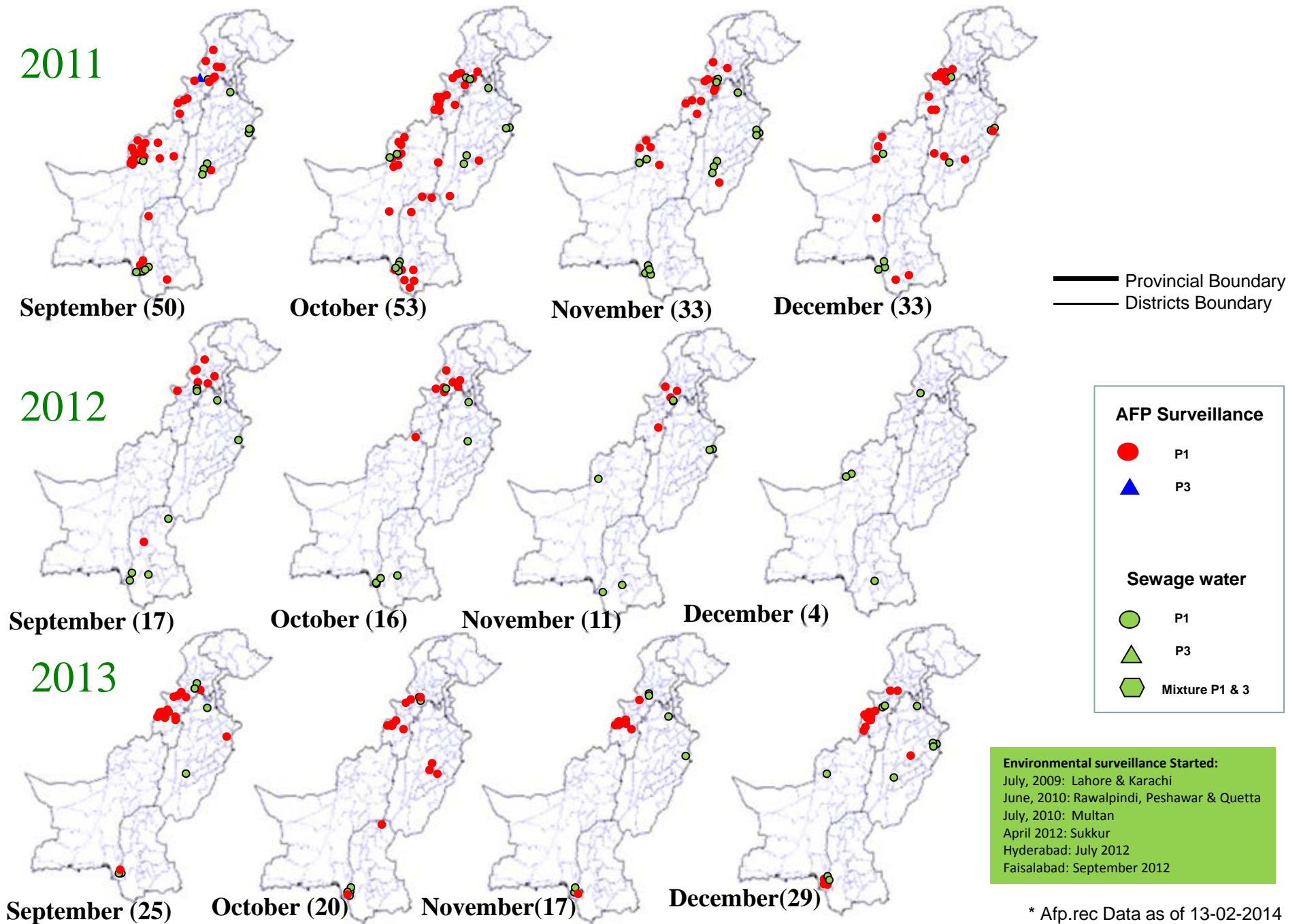
* Afp.rec Data as of 13-02-2014

Map 4.1: Monthly Comparison of P1 & P3 Polio Cases/Isolates 2011-2013*



* Afp.rec Data as of 13-02-2014

Map 4.2: Monthly Comparison of P1 & P3 Polio Cases/Isolates 2011-2013*

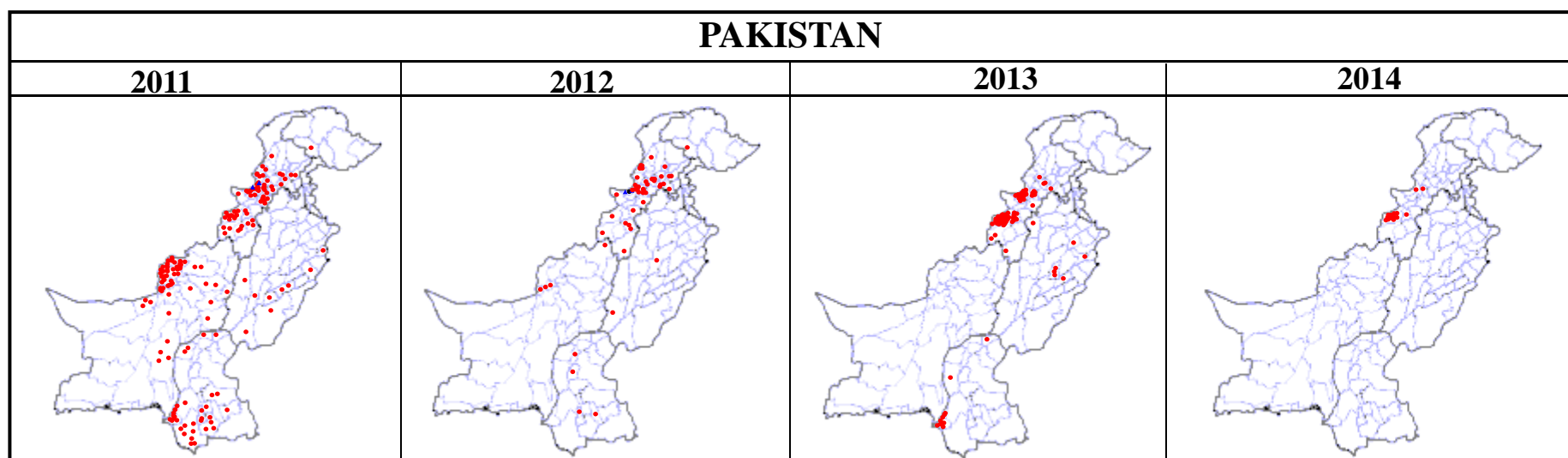


* Afp.rec Data as of 13-02-2014

Table 5: Polio Eradication Update, Pakistan 2011-2014*

Province/Region	Polio 1				Polio 3				Total Wild			
	2011	2012	2013	2014	2011	2012	2013	2014	2011	2012	2013	2014
PUNJAB	9	2	7	-	0	-	-	-	9	2	7	-
SINDH	33	4	10	-	0	-	-	-	33	4	10	-
KP	23	27	11	2	0	-	-	-	23	27	11	2
FATA^	57	17	65	13	2	2	-	-	59	20^	65	13
BALUCHISTAN	73	4	-	-	0	-	-	-	73	4	-	-
AJK	0	-	-	-	0	-	-	-	0	-	-	-
Gilgit-Baltistan	1	1	-	-	0	-	-	-	1	1	-	-
ISLAMABAD	0	-	-	-	0	-	-	-	0	-	-	-
PAKISTAN	196	55	93	15	2	2	-	-	198	58	93	15

^ FATA reported mixture of NSL1 & NSL3



* Afp.rec Data as of 13-02-2014

Table 6: Vaccination status of non polio AFP cases age 6-59 months 2010-2013*

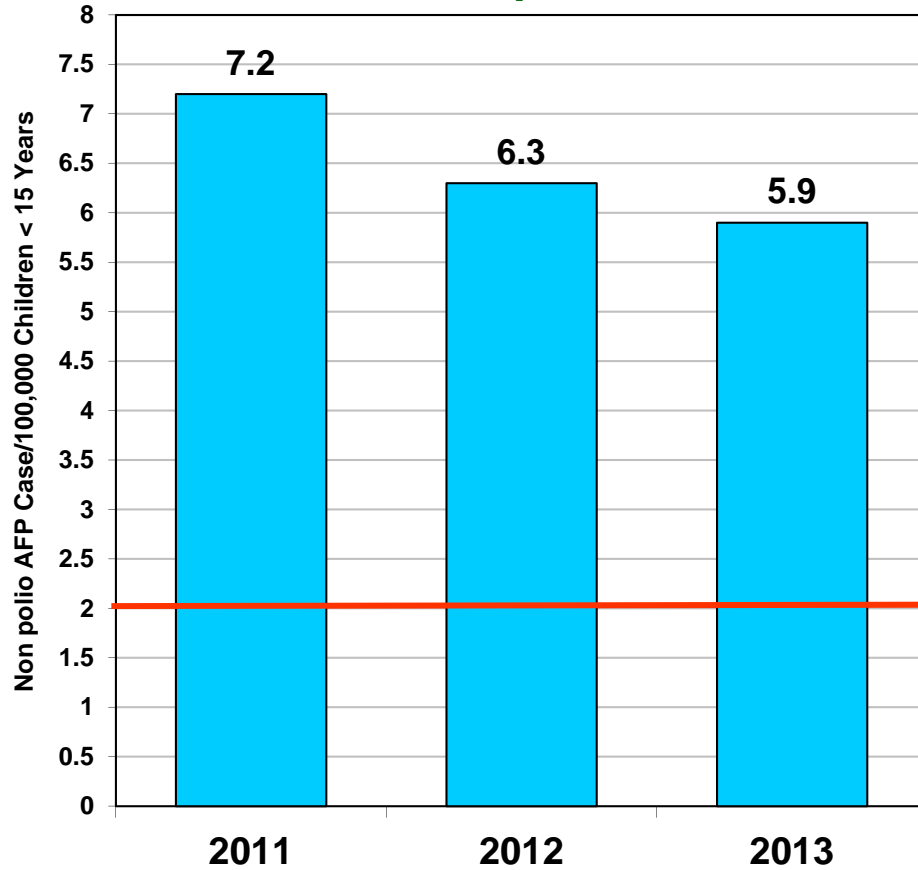
REGION	0 dose				1-2 doses				3 doses				4-6 doses				7+ doses			
	10	11	12	13	10	11	12	13	10	11	12	13	10	11	12	13	10	11	12	13
Central Punjab	0%	0%	0%	0%	1%	1%	0%	0%	1%	2%	0%	1%	7%	6%	4%	7%	91%	92%	95%	91%
North Punjab	0%	0%	0%	0%	0%	1%	0%	0%	2%	1%	0%	0%	6%	5%	4%	4%	91%	93%	96%	96%
South Punjab	0%	0%	0%	0%	1%	0%	0%	0%	0%	1%	0%	0%	5%	5%	4%	5%	94%	93%	96%	94%
PUNJAB	0%	0%	0%	0%	1%	1%	0%	0%	1%	1%	0%	0%	6%	5%	4%	6%	92%	93%	96%	93%
Karachi	2%	4%	1%	1%	0%	1%	1%	5%	3%	0%	2%	0%	7%	6%	6%	6%	88%	88%	90%	88%
North Sindh	0%	0%	0%	0%	1%	1%	0%	0%	0%	0%	1%	0%	4%	5%	4%	5%	95%	94%	94%	95%
South Sindh	0%	1%	0%	0%	1%	1%	1%	0%	1%	0%	2%	1%	9%	6%	4%	7%	89%	93%	93%	91%
SINDH	1%	1%	0%	0%	1%	1%	1%	1%	1%	0%	1%	0%	7%	6%	4%	6%	91%	92%	93%	92%
Central Khyber Pakhtunkhwa	1%	1%	2%	2%	0%	1%	1%	1%	1%	0%	0%	1%	2%	3%	2%	2%	97%	95%	95%	95%
North Khyber Pakhtunkhwa	2%	1%	2%	1%	1%	2%	2%	1%	2%	1%	2%	1%	6%	7%	9%	7%	89%	90%	85%	91%
South Khyber Pakhtunkhwa	3%	2%	2%	1%	3%	4%	1%	0%	3%	4%	1%	1%	14%	7%	9%	4%	76%	83%	87%	95%
Khyber Pakhtunkhwa	1%	1%	2%	1%	1%	2%	1%	0%	2%	1%	1%	1%	6%	5%	6%	4%	90%	91%	89%	94%
FATA	14%	14%	18%	39%	11%	10%	6%	6%	6%	5%	3%	6%	18%	11%	12%	6%	51%	61%	62%	43%
North Balochistan	12%	4%	12%	9%	0%	12%	10%	11%	4%	23%	3%	3%	12%	12%	17%	28%	72%	50%	57%	49%
Quetta Block	0%	31%	14%	8%	11%	10%	10%	8%	0%	3%	0%	0%	9%	14%	14%	21%	81%	43%	62%	64%
Rest of Balochistan	6%	7%	9%	5%	2%	2%	6%	3%	2%	5%	5%	5%	11%	10%	10%	25%	78%	76%	70%	60%
BALOCHISTAN	5%	16%	8%	6%	4%	6%	8%	6%	2%	6%	3%	4%	11%	12%	17%	20%	78%	60%	64%	64%
PAKISTAN	1%	2%	1%	3%	1%	1%	1%	1%	1%	1%	1%	1%	7%	6%	5%	6%	89%	89%	92%	89%

* Afp.rec Data as of 13-02-2014

Key Surveillance Indicators; 2011-2013*

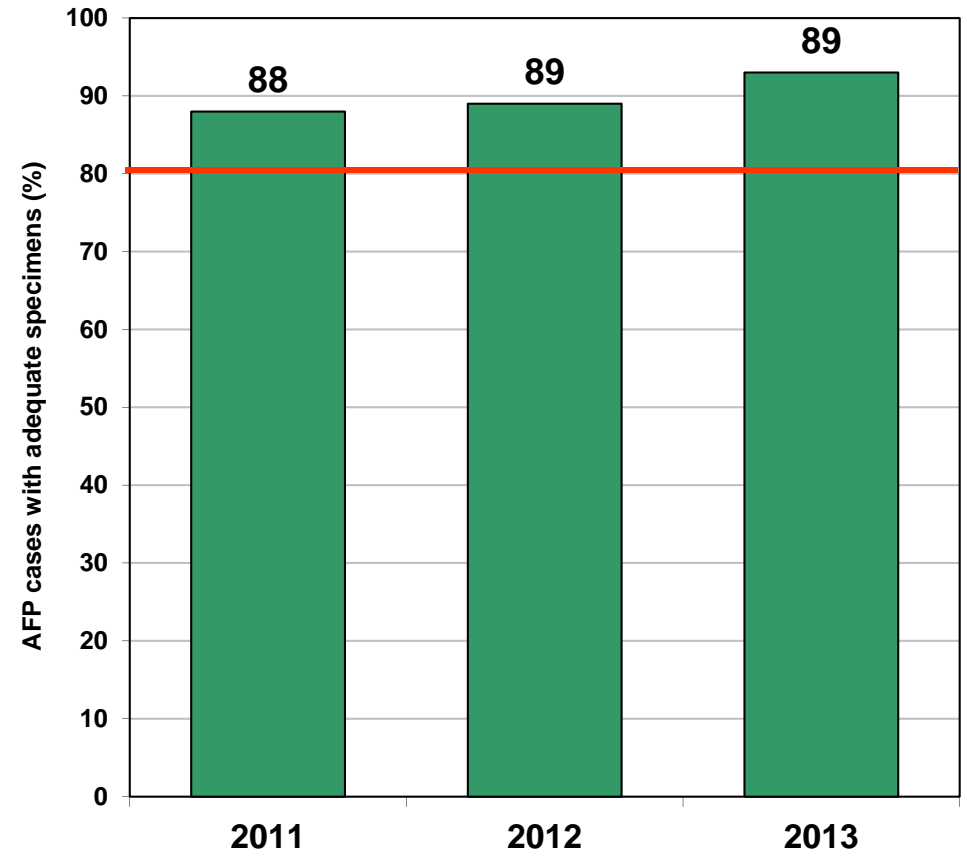
(Non polio AFP rate and % AFP cases with adequate specimens)

Graph 3



■ Non Polio AFP Rate

Graph 4



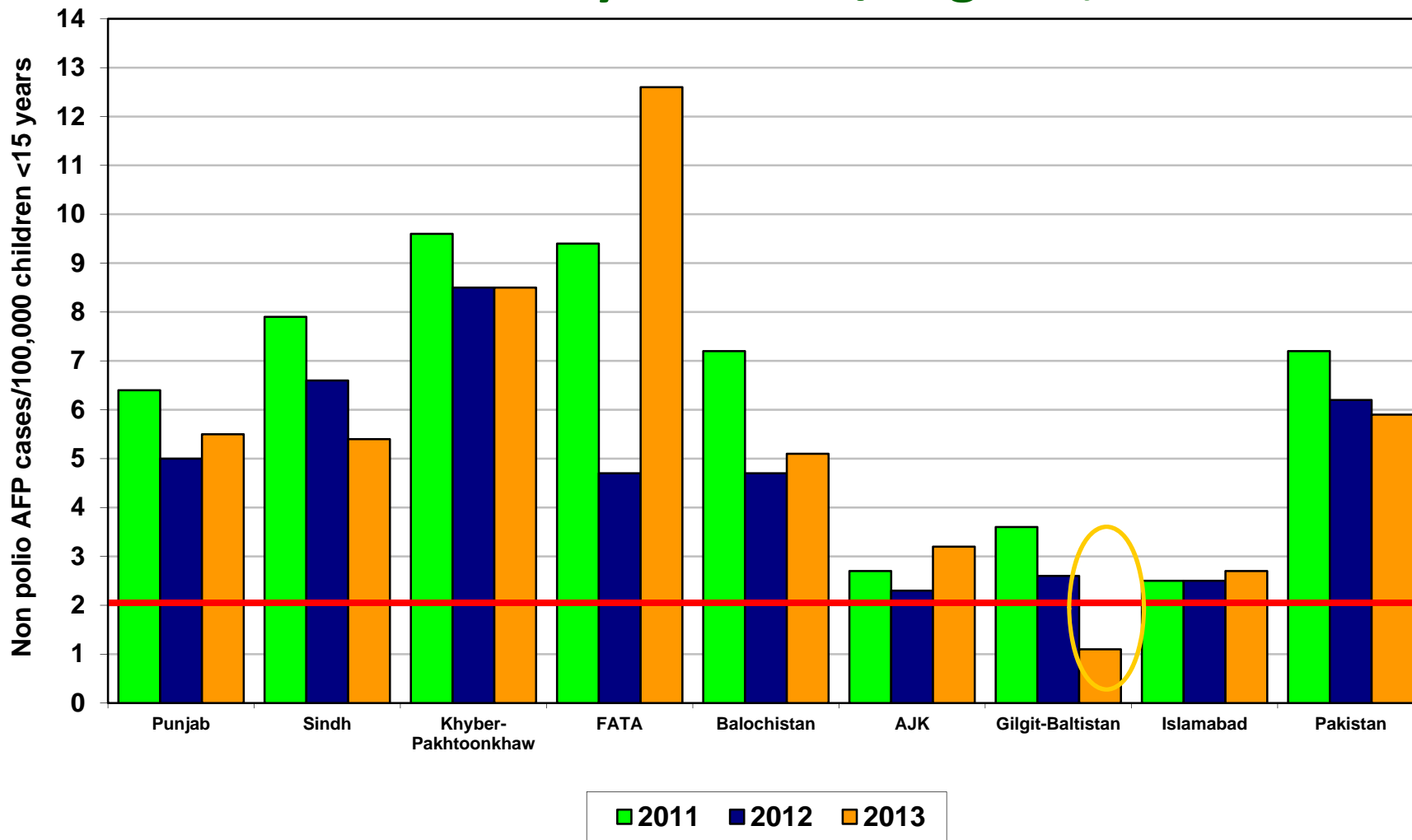
■ % AFP with Adequate Specimens

— Target

Non Polio AFP rate Up to Week No. 52 ended on 28th December, 2013

* Afp.rec Data as of 13-02-2014

Non Polio AFP Rate By Province/Regions, 2011-2013*

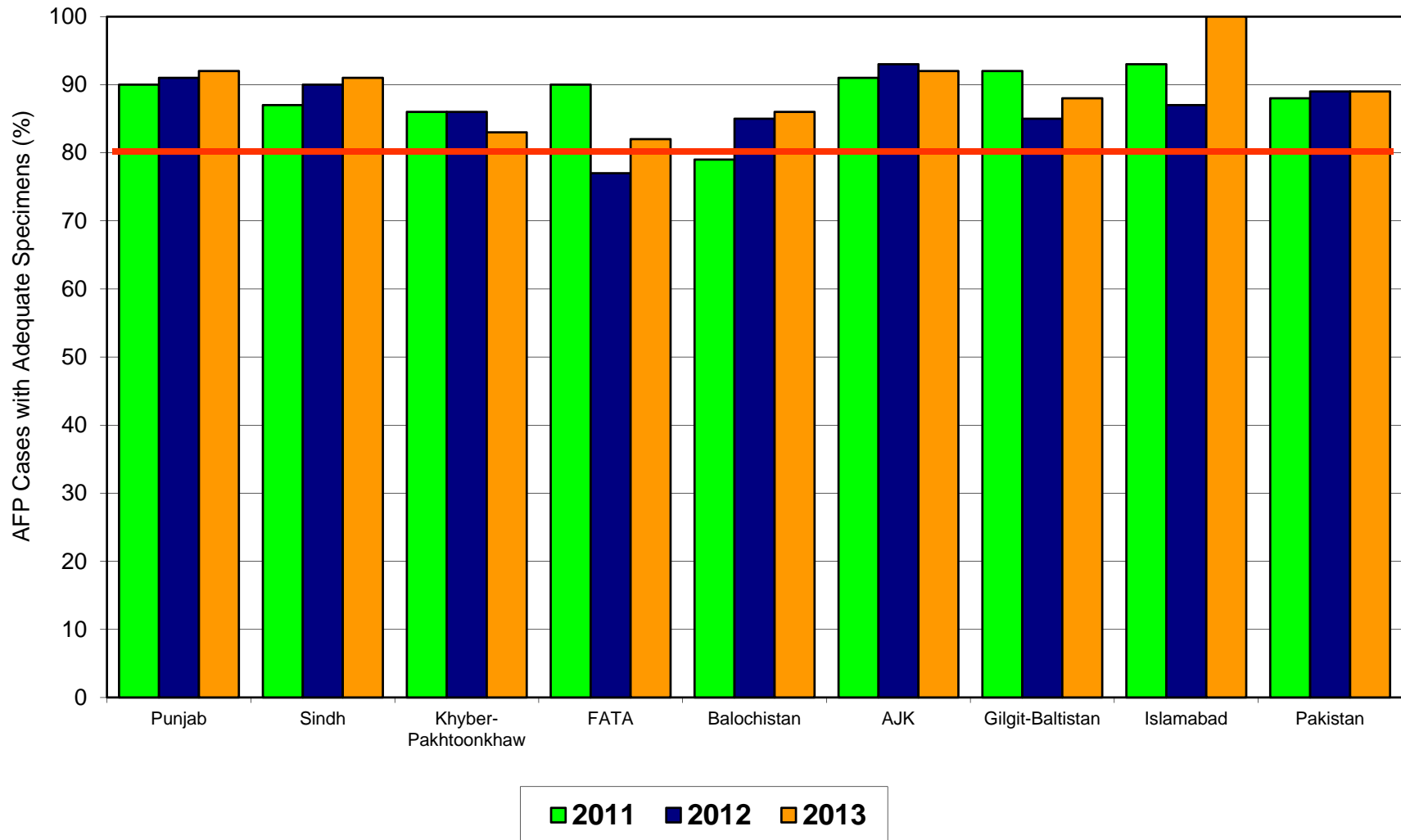


Non Polio AFP rate Up to Week No. 52 ended on 28th December, 2013

Target Non-Polio AFP Rate 2/ 100000 < 15 years of the age

* Afp.rec Data as of 13-02-2014

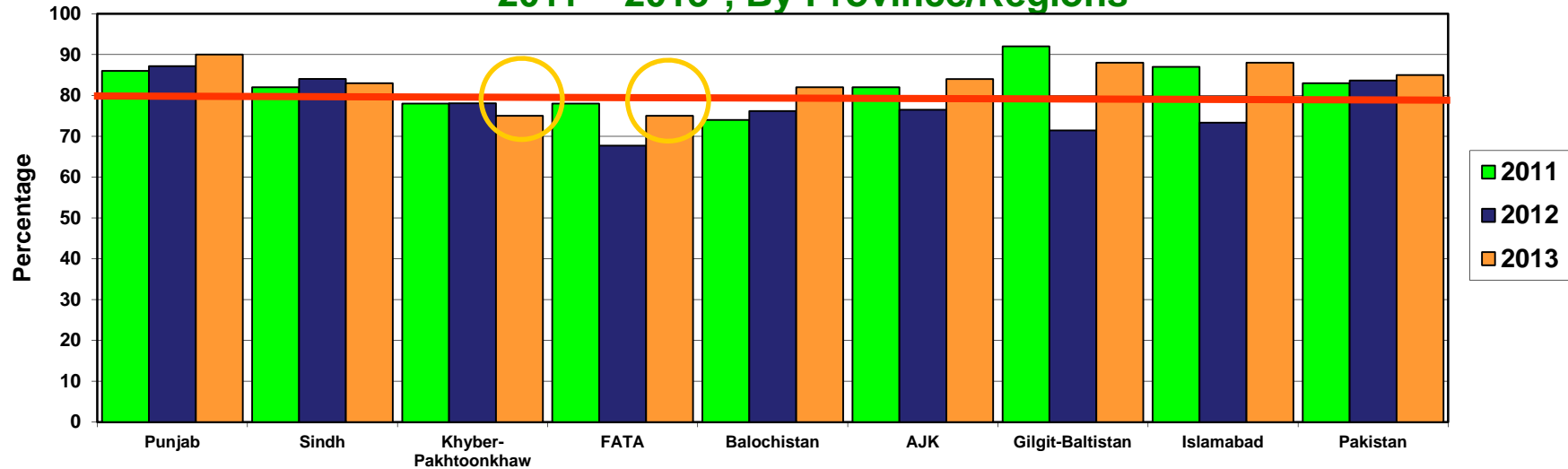
Percent AFP Cases with Adequate Specimens By Province/Regions, 2011-2013*



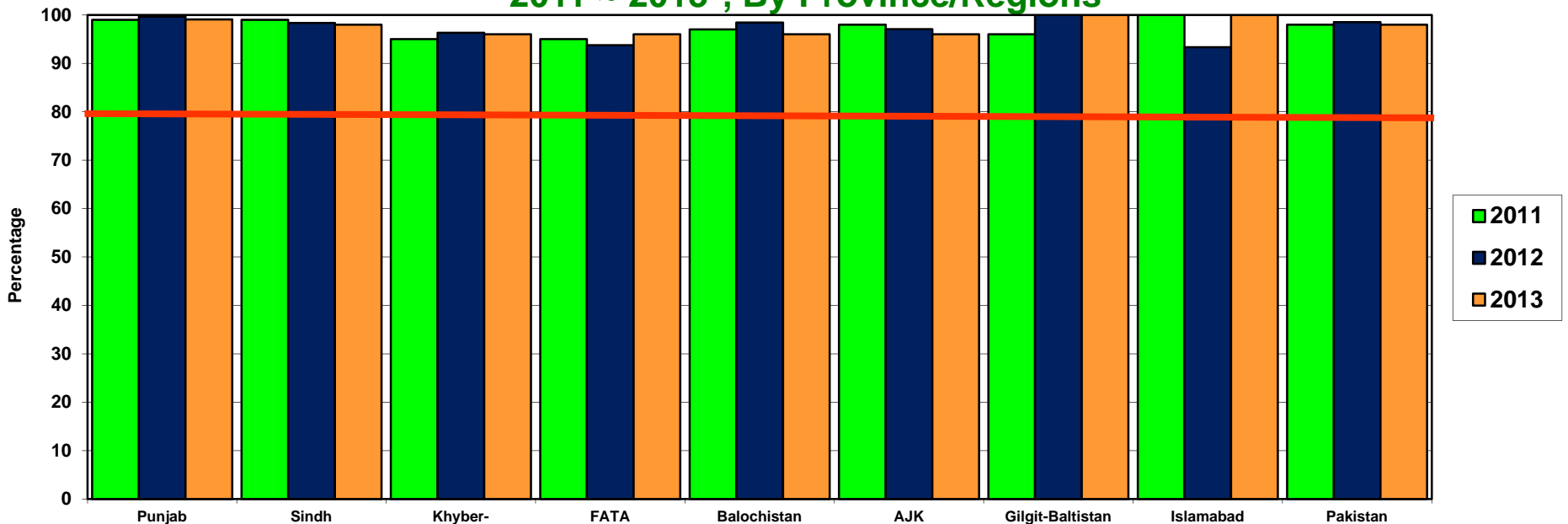
* Afp.rec Data as of 13-02-2014

Target Adequate Sample cases = 80%

**Graph 5: Percent AFP Cases Notified within 07 days of paralysis onset
2011 ~ 2013*, By Province/Regions**



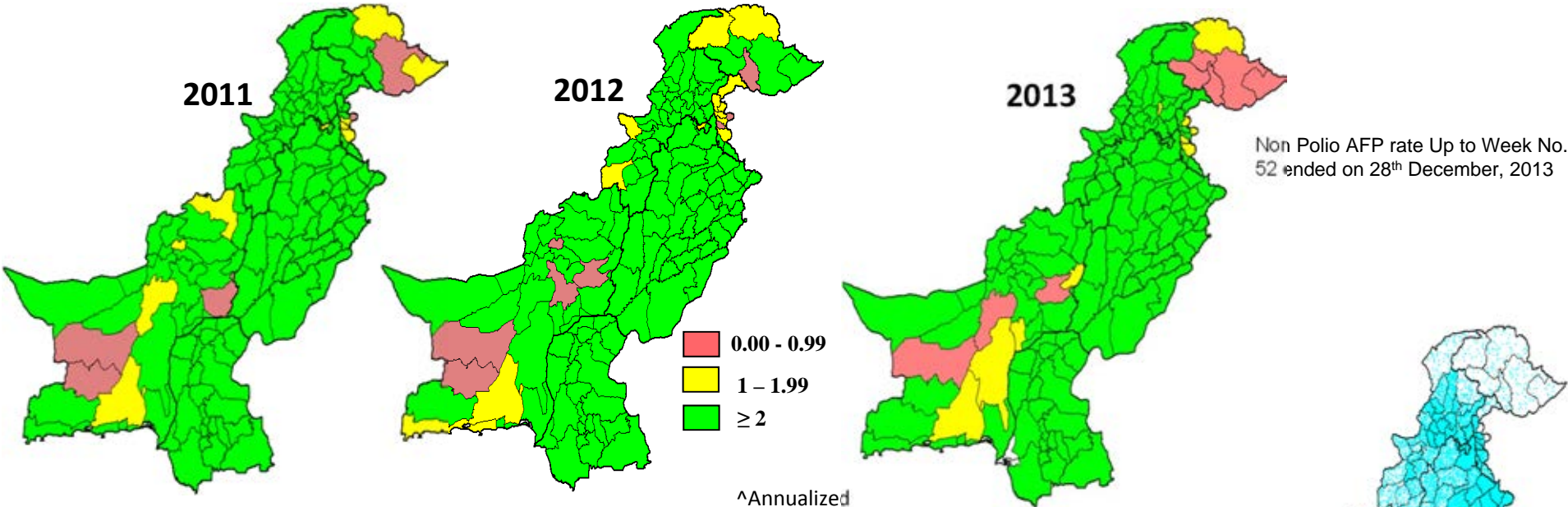
**Graph 6: Percent AFP Cases Investigated within 48 hours of notification
2011 ~ 2013*, By Province/Regions**



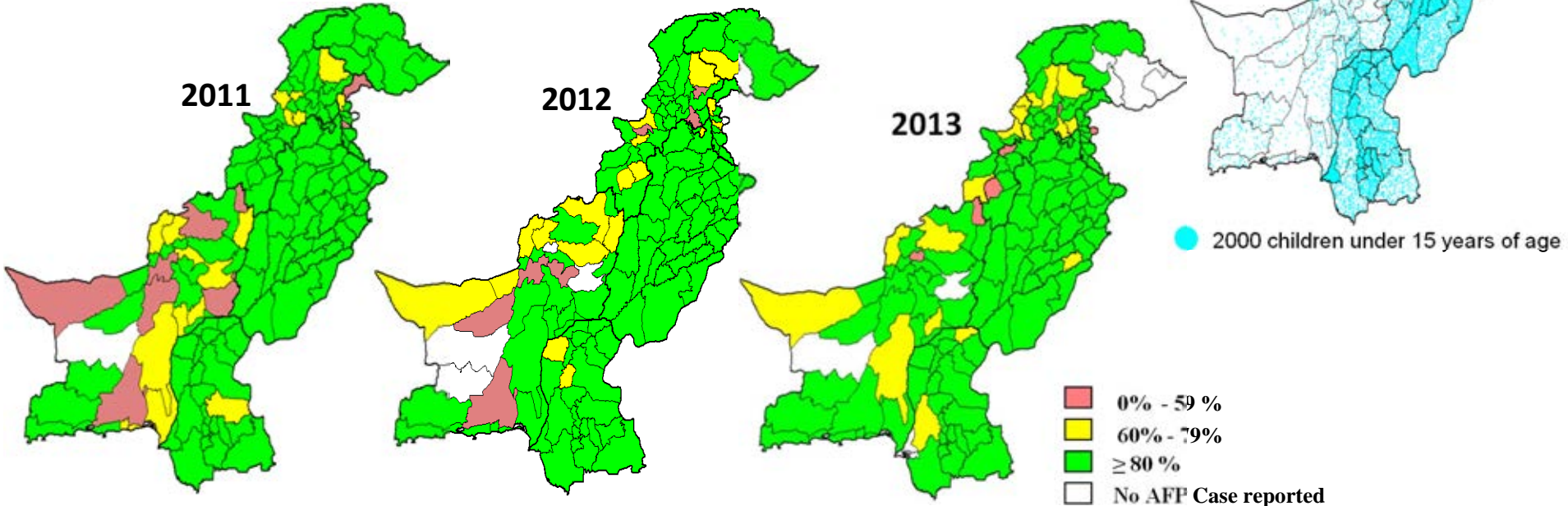
* Afp.rec Data as of 13-02-2014

— Target

Non-Polio^ AFP Rate by District



Percent AFP Cases with Adequate Specimens, by District



* Afp.rec Data as of 13-02-2014

Table 7: AFP CASES PENDING FOR CLASSIFICATION WITH DATE OF ONSET MORE THAN 90 DAYS* 2013 (1/4)

S. No	DISTRICT	TEHSIL	EPID	SEX	AGE	DONSET	DOSE€	DSTOOL1	DSTOOL2	LAB	FEVER	ASYM	PROG	FUP	PEND (DAYS)
1	KARAK	KARAK	KP/51/13/005	F	13	01-01-13	7+	15-02-13	17-02-13	EV	N	Y	Y	Y	408
2	MARDAN	MARDAN	KP/40/13/007	M	29	17-01-13	7+	06-02-13	07-02-13	EV	Y	Y	Y	Y	392
3	PESHAWAR	PESHAWAR	KP/30/13/008	M	96	15-01-13	7+	26-02-13	27-02-13	NVI	N	N	Y	Y	394
4	SWAT	SWAT	KP/24/13/004	M	120	20-02-13	7+	Child Died Before Stool Collection			Y	N	Y	DIED	358
5	WAZIR-N	MIRAN SHAH	FT/64/13/001	M	96	08-02-13	6	13-02-13		NVI	Y	N	Y	DIED	370
6	GHOTKI	KHANGARH	SD/42/13/052	M	72	21-07-13	7+	30-08-13	31-08-13	NVI	Y	N	Y	Y	207
7	HYDERABAD	HYDERABAD CITY	SD/21/13/024	M	84	28-09-13	7+	Child Died Before Stool Collection			N	N	Y	DIED	138
8	HYDERABAD	HYDERABAD RURAL	SD/21/13/033	F	43	17-10-13	7+	10-12-13	11-12-13	NVI	N	N	Y	Y	119
9	JACOBABAD	THUL	SD/53/13/013	M	156	16-05-13	7+	11-06-13	15-06-13	NVI	Y	Y	Y	Y	273
10	JACOBABAD	THUL	SD/53/13/017	M	10	26-06-13	7+	26-07-13	27-07-13	EV	Y	Y	Y	Y	232
11	JAMSHORO	T.B.KHAN	SD/25/13/009	F	18	03-05-13	7+	25-05-13	12-06-13	NVI	N	N	Y	Y	286
12	JAMSHORO	SEHWAN	SD/25/13/019	M	6	02-10-13	3	16-10-13	17-10-13	NVI	Y	Y	Y	LOST	134
13	JAMSHORO	SEHWAN	SD/25/13/020	F	12	02-11-13	7+	20-11-13	21-11-13	NVI	Y	Y	Y	Y	103
14	KAMBAR	MIRO KHAN	SD/55/13/023	M	24	26-09-13	7+	29-10-13	30-10-13		N	Y	Y	Y	140
15	KASHMORE	KANDHKOT	SD/54/13/002	M	54	27-05-13	7+	Late Notified			N	N	Y	LOST	262
16	KHAIRPUR	GAMBAT	SD/43/13/049	F	48	14-10-13	7+	05-11-13	09-11-13	NVI	Y	N	Y	DIED	122
17	KHIBALDIA	BALDIA	SD/61/13/005	F	36	18-06-13	4	Child Died Before Stool Collection			N	N	Y	DIED	240
18	KHIBALDIA	BALDIA	SD/61/13/010	M	16	10-10-13	7+	24-10-13	26-10-13	EV	Y	Y	Y	Y	126
19	KHIBINQASIM	BINQASIM	SD/62/13/012	M	96	19-09-13	7+	17-11-13	18-11-13	NVI	Y	N	Y	Y	147
20	KHIGADAP	GADAP	SD/63/13/010	F	42	02-06-13	7+	Child Died Before Stool Collection			Y	N	Y	DIED	256
21	KHIGADAP	GADAP	SD/63/13/021	F	10	23-08-13	1	23-09-13	24-09-13	NVI	Y	Y	Y	Y	174
22	KHIGADAP	GADAP	SD/63/13/031	M	14	15-07-13	7+	Late Notified			Y	Y	Y	Y	213
23	KHIJAMSHEED	JAMSHEED	SD/66/13/004	F	60	01-05-13	7+	Child Died Before Stool Collection			Y	N	Y	DIED	288
24	KHIKAMARI	KAMARI	SD/67/13/005	M	108	25-06-13	7+	07-07-13	15-07-13	NVI	Y	Y	Y	Y	233
25	KHISADDAR	SADDAR	SD/77/13/004	F	38	05-04-13	7+	10-05-13	11-05-13	NVI	N	N	Y	Y	314
26	NFEROZ	BHIRIA	SD/45/13/003	F	144	05-02-13	7+	Child Died Before Stool Collection			Y	Y	Y	DIED	373
27	NFEROZ	MORO	SD/45/13/013	F	54	10-05-13	7+	01-06-13	02-06-13	NVI	N	Y	Y	Y	279
28	SANGHAR	KHIPRO	SD/32/13/024	F	60	15-09-13	7+	01-10-13	02-10-13	NVI	Y	Y	Y	Y	151
29	T.ALLAHYAR	TANDO ALLAHYAR	SD/27/13/009	M	4	28-05-13	4	24-06-13	25-06-13	NVI	Y	Y	Y	Y	261
30	T.ALLAHYAR	J.MUREE	SD/27/13/010	M	72	13-06-13	7+	Child Died Before Stool Collection			Y	Y	Y	DIED	245
31	T.ALLAHYAR	J.MUREE	SD/27/13/015	M	60	21-08-13	7+	03-09-13	05-09-13	NVI	N	Y	Y	Y	176
32	THARPARKAR	MITHI	SD/33/13/021	M	36	21-09-13	7+	14-10-13	15-10-13	NVI	Y	N	N	Y	145
33	THATTA	THATTA	SD/22/13/032	M	72	06-06-13	7+	15-07-13	16-07-13	NVI	Y	Y	Y	Y	252
34	UMERKOT	UMER KOT	SD/34/13/026	M	2	06-09-13	1	17-09-13		EV	Y	N	Y	DIED	160
35	ABOTABAD	HAVALIAN	KP/10/13/017	M	96	23-07-13	7+	14-08-13	15-08-13	NVI	Y	N	Y	Y	205
36	ABOTABAD	ABBOTABAD	KP/10/13/021	M	49	27-07-13	7+	16-08-13	17-08-13	EV	N	N	N		201
37	ABOTABAD	ABBOTABAD	KP/10/13/025	F	14	15-10-13	7+	03-11-13	04-11-13	NVI	N	N	Y		121
38	ABOTABAD	HAVALIAN	KP/10/13/027	F	72	18-08-13	7+	Late Notified			N	Y	Y	Y	179
39	ABOTABAD	ABBOTABAD	KP/10/13/029	F	144	18-10-13	0	08-11-13	15-11-13	NVI	Y	Y	Y	Y	118
40	BANNU	BANNU	KP/61/13/010	M	53	30-04-13	7+	Late Notified			Y	N	N	Y	289
41	BUNIR	DAGGAR	KP/22/13/008	M	35	12-03-13	7+	01-04-13	02-04-13	NVI	Y	Y	Y	Y	338
42	BUNIR	DAGGAR	KP/22/13/007	M	132	28-02-13	7+	30-03-13	31-03-13	NVI	N	N	Y	Y	350
43	BUNIR	DAGGAR	KP/22/13/015	M	72	01-01-13	7+				Y	Y	Y	Y	408
44	BUNIR	DAGGAR	KP/22/13/044	M	16	09-08-13	0	Late Notified			Y	N	N	Y	188

€ Based on recall of parents

* Afp.rec Data as of 13-02-2014

60 days Follow-up not done

FUP = Residual Weakness at 60 days follow up.

Table 7.1: AFP CASES PENDING FOR CLASSIFICATION WITH DATE OF ONSET MORE THAN 90 DAYS* 2013 (2/4)

S. No	DISTRICT	TEHSIL	EPID	SEX	AGE	DONSET	DOSE€	DSTOOL1	DSTOOL2	LAB	FEVER	ASYM	PROG	FUP	PEND (DAYS)
45	CHARSADA	CHARSADA	KP/31/13/049	F	72	10-08-13	7+	24-08-13	27-08-13	NVI	Y	Y	Y		187
46	CHARSADA	SHABQADAR	KP/31/13/052	F	39	27-08-13	7+	10-09-13	11-09-13	NVI	Y	Y	Y		170
47	CHARSADA	CHARSADA	KP/31/13/053	M	18	03-08-13	7+	03-09-13	04-09-13	NVI	Y	Y	Y		194
48	CHARSADA	CHARSADA	KP/31/13/072	F	30	25-10-13	7+	19-12-13	20-12-13	NVI	Y	Y	Y		111
49	DIKHAN	KULACHI	KP/60/13/013	F	18	22-04-13	5	16-06-13	17-06-13	VACC	N	Y	Y	Y	297
50	DIKHAN	DIKHAN	KP/60/13/014	M	54	17-06-13	7+	20-06-13		NVI	Y	Y	Y	DIED	241
51	DIRLOWER	SAMAR BAGH	KP/23/13/015	F	13	30-01-13	7+	Late Notified			Y	Y	Y	Y	379
52	DIRLOWER	SAMAR BAGH	KP/23/13/033	F	96	25-07-13	7+	05-09-13	07-09-13	NVI	Y	Y	Y	Y	203
53	DIRLOWER	TIMERGARA	KP/23/13/034	M	30	08-08-13	7+	16-09-13	17-09-13	NVI	Y	Y	Y	Y	189
54	DIRLOWER	TIMERGARA	KP/23/13/038	M	1	10-10-13	1	15-11-13	16-11-13	NVI	Y	Y	Y	Y	126
55	DIRUPPER	DIR	KP/25/13/006	F	21	25-07-13	7+	08-08-13	10-08-13	EV	UK	Y	Y	Y	203
56	HANGU	HANGU	KP/54/13/004	F	30	05-06-13	7+	05-07-13	06-07-13	EV	Y	N	Y	Y	253
57	HANGU	HANGU	KP/54/13/014	F	8	28-10-13	7+	26-11-13	28-11-13	NVI	Y	N	Y		108
58	HARIPUR	HARIPUR	KP/12/13/005	M	66	18-01-13	7+	19-02-13	20-02-13	EV	N	N	Y	Y	391
59	HARIPUR	HARIPUR	KP/12/13/012	F	20	18-04-13	7+	19-05-13	20-05-13	EV	Y	Y	Y	Y	301
60	HARIPUR	HARIPUR	KP/12/13/024	F	48	06-10-13	7+	29-10-13	30-10-13	NVI	Y	N	Y	Y	130
61	KARAK	TAKHT E NASRATI	KP/51/13/017	M	21	09-09-13	7+	24-09-13	26-09-13	NVI	Y	Y	Y	Y	157
62	KOHAT	LACHI	KP/50/13/012	M	96	28-05-13	7+	26-06-13	27-06-13	NVI	N	N	Y	Y	261
63	KOHAT	LACHI	KP/50/13/015	M	21	15-05-13	7+	Late Notified			Y	Y	Y	Y	274
64	KOHAT	KOHAT	KP/50/13/027	M	84	06-11-13	7+	28-11-13		NVI	N	N	Y		99
65	LAKKIMRWT	LAKKIMRWT	KP/62/13/018	M	26	22-05-13	7+	21-06-13	22-06-13		N	Y	Y	Y	267
66	LAKKIMRWT	LAKKIMRWT	KP/62/13/030	F	28	11-09-13	7+	01-10-13	03-10-13	NVI	N	N	Y	Y	155
67	LAKKIMRWT	LAKKIMRWT	KP/62/13/038	F	96	05-10-13	3	26-10-13	27-10-13	NVI	Y	Y	Y	Y	131
68	MANSEHRA	MANSEHRA	KP/14/13/005	M	168	17-03-13	7+	Child Died Before Stool Collection			N	N	Y	DIED	333
69	MANSEHRA	MANSEHRA	KP/14/13/010	F	9	01-06-13	6	17-06-13	19-06-13	NVI	Y	N	Y	DIED	257
70	MANSEHRA	MANSEHRA	KP/14/13/019	F	24	13-07-13	7+	Child Died Before Stool Collection			UK	UK	Y	DIED	215
71	MANSEHRA	OGHI	KP/14/13/038	M	26	08-11-13	7+	28-11-13	02-12-13	NVI	Y	Y	N		97
72	MANSEHRA	MANSEHRA	KP/14/13/026	M	84	31-08-13	7+	16-09-13	17-09-13	NVI	Y	N	Y	DIED	166
73	MARDAN	TAKHT BHAI	KP/40/13/034	M	5	10-03-13	6	Late Notified			N	Y	UK	Y	340
74	MARDAN	MARDAN	KP/40/13/059	F	24	25-07-13	7+	21-08-13	22-08-13	NVI	Y	Y	Y	Y	203
75	MARDAN	MARDAN	KP/40/13/063	M	108	15-08-13	7+	29-08-13	31-08-13	NVI	Y	Y	Y	Y	182
76	MARDAN	MARDAN	KP/40/13/046	F	24	15-06-13	7+	05-07-13	06-07-13	EV	Y	Y	Y	Y	243
77	MARDAN	MARDAN	KP/40/13/074	F	24	02-08-13	7+	11-09-13	13-09-13	NVI	N	Y	Y	Y	195
78	MARDAN	MARDAN	KP/40/13/077	F	32	02-09-13	7+	24-09-13	25-09-13	NVI	Y	Y	Y	Y	164
79	MARDAN	MARDAN	KP/40/13/073	M	23	15-06-13	7+	Late Notified			UK	Y	UK	Y	243
80	MARDAN	MARDAN	KP/40/13/095	F	60	13-10-13	7+	16-11-13	17-11-13	NVI	N	N	Y	Y	123
81	NOWSHERA	NOWSHERA	KP/32/13/012	F	108	15-03-13	7+	Child Died Before Stool Collection			Y	N	Y	DIED	335
82	NOWSHERA	NOWSHERA	KP/32/13/029	M	14	28-07-13	7+	17-08-13	18-08-13	EV	Y	Y	Y		200
83	NOWSHERA	NOWSHERA	KP/32/13/036	F	30	03-08-13	7+	25-09-13	26-09-13	NVI	Y	Y	Y		194
84	NOWSHERA	NOWSHERA	KP/32/13/031	M	25	25-07-13	7+	21-08-13	22-08-13	EV	Y	Y	Y		203
85	PESHAWAR	PESHAWAR	KP/30/13/022	F	22	06-02-13	7+	Late Notified			N	N	N	Y	372
86	PESHAWAR	PESHAWAR	KP/30/13/026	M	24	17-04-13	0	17-05-13	19-05-13	EV	Y	Y	Y	Y	302
87	PESHAWAR	PESHAWAR	KP/30/13/039	F	54	03-05-13	7+	14-06-13	15-06-13	EV	Y	Y	Y	Y	286
88	PESHAWAR	PESHAWAR	KP/30/13/043	F	66	16-06-13	7+	07-07-13	08-07-13	NVI	Y	Y	Y	Y	242

€ Based on recall of parents

* Afp.rec Data as of 13-02-2014

60 days Follow-up not done

FUP = Residual Weakness at 60 days follow up.

Table 7.2: AFP CASES PENDING FOR CLASSIFICATION WITH DATE OF ONSET MORE THAN 90 DAYS* 2013 (3/4)

S. No	DISTRICT	TEHSIL	EPID	SEX	AGE	DONSET	DOSE€	DSTOOL1	DSTOOL2	LAB	FEVER	ASYM	PROG	FUP	PEND (DAYS)
89	PESHAWAR	PESHAWAR	KP/30/13/052	M	36	13-07-13	7+	27-07-13	28-07-13	EV	N	Y	Y	Y	215
90	PESHAWAR	PESHAWAR	KP/30/13/063	M	14	16-08-13	7+	30-08-13	01-09-13	VACC	Y	N	Y	LOST	181
91	PESHAWAR	PESHAWAR	KP/30/13/069	M	84	29-08-13	7+	13-09-13	14-09-13	NVI	Y	Y	Y	DIED	168
92	PESHAWAR	PESHAWAR	KP/30/13/057	F	21	14-07-13	7+	16-08-13	17-08-13	EV	Y	Y	Y	Y	214
93	PESHAWAR	PESHAWAR	KP/30/13/076	F	24	28-08-13	7+	02-10-13	10-10-13	NVI	Y	N	UK	Y	169
94	PESHAWAR	PESHAWAR	KP/30/13/097	F	9	02-10-13	0	19-11-13	20-11-13	EV	Y	Y	Y		134
95	PESHAWAR	PESHAWAR	KP/30/13/094	F	96	11-10-13	7+	17-11-13	19-11-13	NVI	Y	Y	Y	Y	125
96	PESHAWAR	PESHAWAR	KP/30/13/096	M	7	08-10-13	3	18-11-13	19-11-13	NVI	Y	Y	Y	Y	128
97	PESHAWAR	PESHAWAR	KP/30/13/056	F	24	14-07-13	7+	06-08-13	07-08-13	NVI	N	N	Y	Y	214
98	PESHAWAR	PESHAWAR	KP/30/13/059	M	86	13-06-13	7+	Late Notified			Y	Y	Y	Y	245
99	PESHAWAR	PESHAWAR	KP/30/13/106	M	25	05-10-13	7+	29-11-13	30-11-13	EV	N	Y	Y		131
100	PESHAWAR	PESHAWAR	KP/30/13/095	F	23	25-10-13	7+	14-11-13	16-11-13	NVI	N	N	Y	DIED	111
101	PESHAWAR	PESHAWAR	KP/30/13/098	F	26	01-11-13	7+	20-11-13	21-11-13	NVI	Y	N	Y	Y	104
102	PESHAWAR	PESHAWAR	KP/30/13/114	M	14	15-10-13	7+	Late Notified			N	Y	Y	Y	121
103	PESHAWAR	PESHAWAR	KP/30/13/111	F	46	08-11-13	7+	15-12-13	16-12-13	NVI	Y	Y	Y	Y	97
104	SHANGLA	MARTOONG	KP/26/13/001	M	72	08-01-13	7+	Late Notified			Y	Y	Y	LOST	401
105	SHANGLA	CHAKISAR	KP/26/13/008	F	36	01-06-13	7+	27-06-13	31-07-13	NVI	Y	Y	Y	Y	257
106	SWABI	SWABI	KP/41/13/035	M	36	15-09-13	7+	Late Notified			Y	Y	Y		151
107	SWABI	LAHORE	KP/41/13/048	M	17	23-10-13	7+	24-11-13	25-11-13	EV	N	Y	Y		113
108	SWAT	SWAT	KP/24/13/006	F	132	02-04-13	7+	10-04-13		NVI	N	N	Y	DIED	317
109	SWAT	SWAT	KP/24/13/009	M	16	19-04-13	7+	14-05-13	15-05-13	NVI	Y	N	N	Y	300
110	SWAT	SWAT	KP/24/13/025	M	96	01-11-13	3	Late Notified			Y	N	Y		104
111	SWAT	SWAT	KP/24/13/024	M	6	24-10-13	5	07-11-13	08-11-13	NVI	N	Y	UK		112
112	TANK	TANK	KP/63/13/005	M	42	25-02-13	7+	27-04-13	28-04-13	NVI	Y	N	UK	Y	353
113	TANK	TANK	KP/63/13/009	M	13	02-08-13	7+	06-09-13	07-09-13	NVI	N	N	Y	Y	195
114	TANK	TANK	KP/63/13/010	M	24	11-08-13	7+	24-09-13	25-09-13	NVI	Y	Y	Y	Y	186
115	JAFARABAD	SOHBAT PUR	BN/43/13/015	F	30	18-07-13	7+	30-08-13	31-08-13	EV	Y	Y	Y	Y	210
116	KHUZDAR	NAAL	BN/54/13/002	M	82	23-08-13	4	05-09-13	07-09-13	NVI	Y	N	Y		174
117	NSIRABAD	DMJAMALI	BN/41/13/010	M	18	08-09-13	7+	Child Died Before Stool Collection			Y	N	Y	DIED	158
118	ZIARAT	ZIARAT	BN/32/13/003	M	13	16-09-13	3	08-10-13	09-10-13	NVI	Y	Y	Y		150
119	GHIZER	PUNIAL	GB/41/13/001	M	66	02-09-13	7+	06-09-13		EV	N	Y	Y	DIED	164
120	BAJOUR	MAMUND	FT/33/13/007	M	45	02-01-13	7+	Late Notified			N	Y	Y	Y	407
121	BAJOUR	KHAR	FT/33/13/018	M	22	08-07-13	7+	23-08-13	24-08-13	NVI	Y	Y	Y		220
122	BAJOUR	MAMUND	FT/33/13/017	F	44	09-07-13	7+	13-08-13	14-08-13	EV	Y	N	N		219
123	BAJOUR	KHAR	FT/33/13/020	F	12	07-08-13	7+	07-09-13	08-09-13	EV	Y	Y	N		190
124	BAJOUR	MAMUND	FT/33/13/022	M	17	28-07-13	7+	12-09-13	13-09-13	NVI	N	Y	N		200
125	BAJOUR	KHAR	FT/33/13/023	F	48	15-08-13	7+	15-09-13	16-09-13	EV	N	N	Y		182
126	BAJOUR	KHAR	FT/33/13/024	M	36	18-08-13	7+	16-09-13	17-09-13	NVI	Y	Y	Y		179
127	BAJOUR	MAMUND	FT/33/13/032	M	18	04-09-13	7+	05-10-13	06-10-13	VACC	Y	Y	N		162
128	BAJOUR	SALARZAI	FT/33/13/042	F	84	12-11-13	7+	Late Notified			Y	N	Y		93
129	BAJOUR	NAWAGAI	FT/33/13/040	F	48	30-09-13	7+	25-11-13	26-11-13	VACC	Y	Y	N		136
130	FR BANNU	FR BANNU	FT/69/13/007	M	22	30-07-13	3	28-08-13	29-08-13	EV	Y	Y	Y		198
131	FR BANNU	FR BANNU	FT/69/13/012	M	9	10-08-13	0	22-09-13	23-09-13	EV	Y	Y	Y		187
132	FR BANNU	FR BANNU	FT/69/13/021	M	12	28-09-13	0	30-10-13	31-10-13	NVI	Y	Y	Y		138

€ Based on recall of parents

* Afp.rec Data as of 13-02-2014

60 days Follow-up not done

FUP = Residual Weakness at 60 days follow up.

Table 7.3: AFP CASES PENDING FOR CLASSIFICATION WITH DATE OF ONSET MORE THAN 90 DAYS* 2013 (4/4)

S. No	DISTRICT	TEHSIL	EPID	SEX	AGE	DONSET	DOSE€	DSTOOL1	DSTOOL2	LAB	FEVER	ASYM	PROG	FUP	PEND (DAYS)
133	KHYBER	JAMRUD	FT/34/13/002	F	24	18-01-13	7+	21-02-13	23-02-13	NVI	N	Y	Y	Y	391
134	KHYBER	JAMRUD	FT/34/13/017	M	14	08-06-13	0	16-06-13		NVI	Y	Y	Y	Y	250
135	KHYBER	BARA	FT/34/13/016	F	10	06-06-13	0	21-06-13	23-06-13	NVI	Y	Y	Y		252
136	KHYBER	BARA	FT/34/13/018	M	12	11-06-13	0	01-07-13	02-07-13	EV	Y	Y	Y		247
137	KHYBER	BARA	FT/34/13/021	F	18	13-07-13	0	25-07-13	29-07-13	NVI	N	N	Y		215
138	KHYBER	BARA	FT/34/13/037	M	13	26-09-13	0	11-10-13	12-10-13	NVI	Y	Y	Y		140
139	KHYBER	LANDI KOTAL	FT/34/13/039	M	18	09-10-13	7+	Late Notified			Y	N	Y		127
140	KHYBER	BARA	FT/34/13/043	F	36	17-10-13	1	08-11-13	09-11-13	EV	Y	Y	Y		119
141	KHYBER	LANDI KOTAL	FT/34/13/044	M	44	30-06-13	7+	Late Notified			Y	Y	Y	Y	228
142	KHYBER	LANDI KOTAL	FT/34/13/048	M	12	25-09-13	7+	Late Notified			Y	Y	Y	Y	141
143	KHYBER	LANDI KOTAL	FT/34/13/049	M	11	25-10-13	3	11-12-13	12-12-13	EV	N	N	Y		111
144	MOHMAND	UPPER MOHMAND	FT/35/13/003	F	18	18-04-13	7+	07-05-13	08-05-13	NVI	Y	Y	Y	Y	301
145	MOHMAND	UPPER MOHMAND	FT/35/13/008	M	26	08-05-13	7+	22-06-13	23-06-13	EV	Y	Y	Y		281
146	WAZIR-N	MIRAN SHAH	FT/64/13/007	M	48	25-04-13	5	10-05-13	12-05-13	NVI	Y	N	Y	Y	294
147	WAZIR-N	MIR ALI	FT/64/13/030	F	9	09-08-13	0	Late Notified			Y	N	N		188
148	WAZIR-N	MIR ALI	FT/64/13/042	M	7	03-07-13	0	29-08-13	30-08-13	EV	Y	N	Y		225
149	WAZIR-N	MIR ALI	FT/64/13/054	F	18	09-09-13	2	Late Notified			Y	N	Y		157
150	WAZIR-N	MIR ALI	FT/64/13/090	M	12	20-09-13	0	24-10-13	25-10-13	VACC	Y	Y	Y		146
151	WAZIR-N	MIR ALI	FT/64/13/101	F	10	20-10-13	0	07-11-13	09-11-13	NVI	Y	Y	Y		116
152	WAZIR-N	RAZMAK	FT/64/13/111	F	24	22-10-13	3	24-11-13	25-11-13	NVI	Y	N	Y		114
153	WAZIR-N	MIRAN SHAH	FT/64/13/122	F	13	15-09-13	0	Late Notified			Y	Y	Y	Y	151
154	WAZIR-N	MIRAN SHAH	FT/64/13/121	M	13	25-08-13	0	Late Notified			N	Y	Y	Y	172
155	WAZIR-N	MIRAN SHAH	FT/64/13/123	M	12	05-10-13	0	Late Notified			Y	Y	Y	Y	131
156	WAZIR-S	WANA	FT/65/13/006	F	26	13-07-13	7+	15-08-13	16-08-13	NVI	Y	Y	Y		215
157	WAZIR-S	LADHA	FT/65/13/012	F	36	01-10-13	1	21-10-13	22-10-13	EV	Y	Y	Y		135
158	WAZIR-S	WANA	FT/65/13/005	F	12	25-04-13	1	19-06-13	20-06-13	NVI	UK	N	UK		294
159	WAZIR-S	WANA	FT/65/13/010	F	23	21-09-13	5	27-09-13		NVI	Y	N	UK		145

€ Based on recall of parents

* Afp.rec Data as of 13-02-2014

60 days Follow-up not done

FUP = Residual Weakness at 60 days follow up.