



**World Health
Organization**

Weekly AFP Surveillance Update Pakistan

Week 5 (*Ended on 01st February, 2014*)

AFP Surveillance



National Surveillance Cell Federal EPI

World Health Organization Country Office,
Chak Shahzad, Park Road,
Islamabad, Pakistan

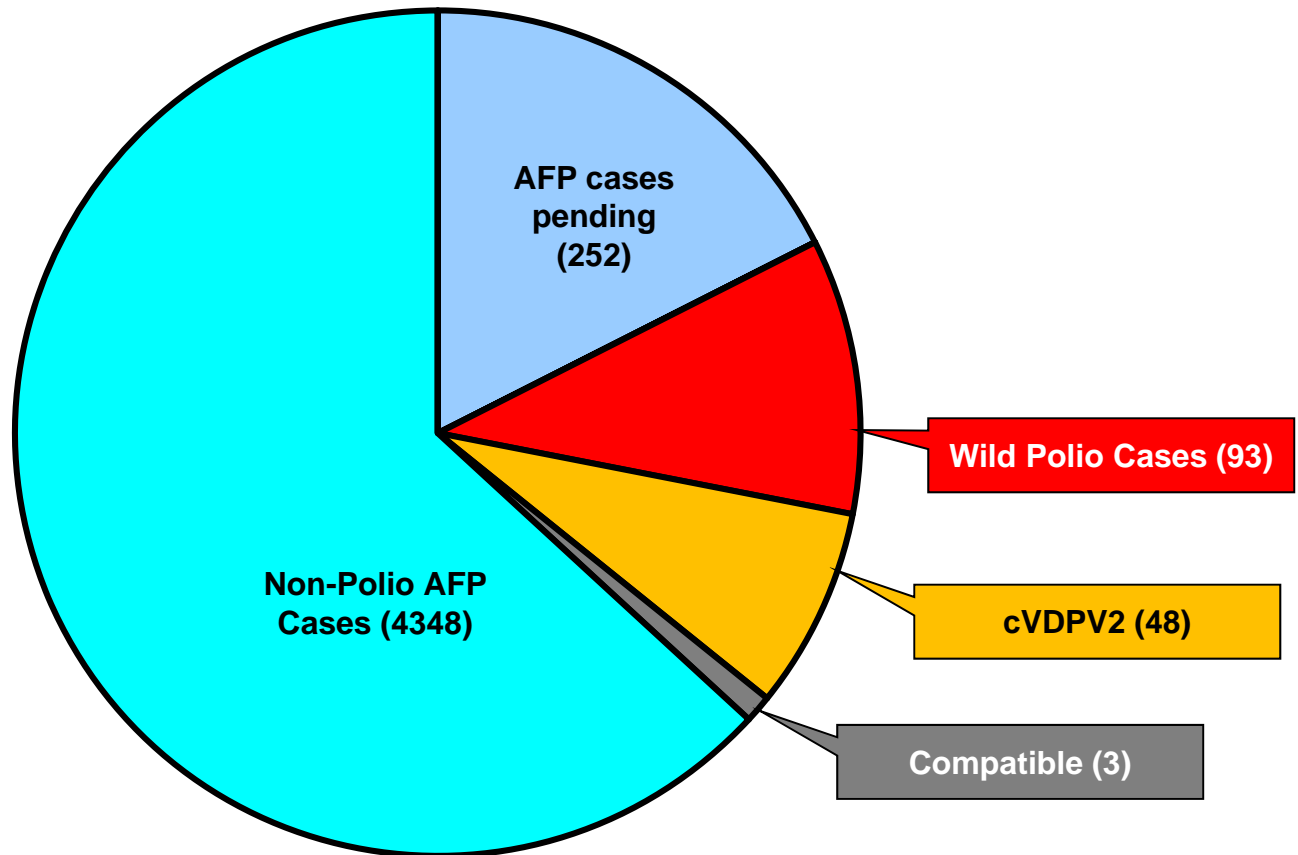
Tel: +92-51 9255123 / 9255282 /9255184

Fax: +92-51 9255274

Email: epidata@pak.emro.who.int

Web site: www.who.gov.pk

AFP Case Profile, 2013*

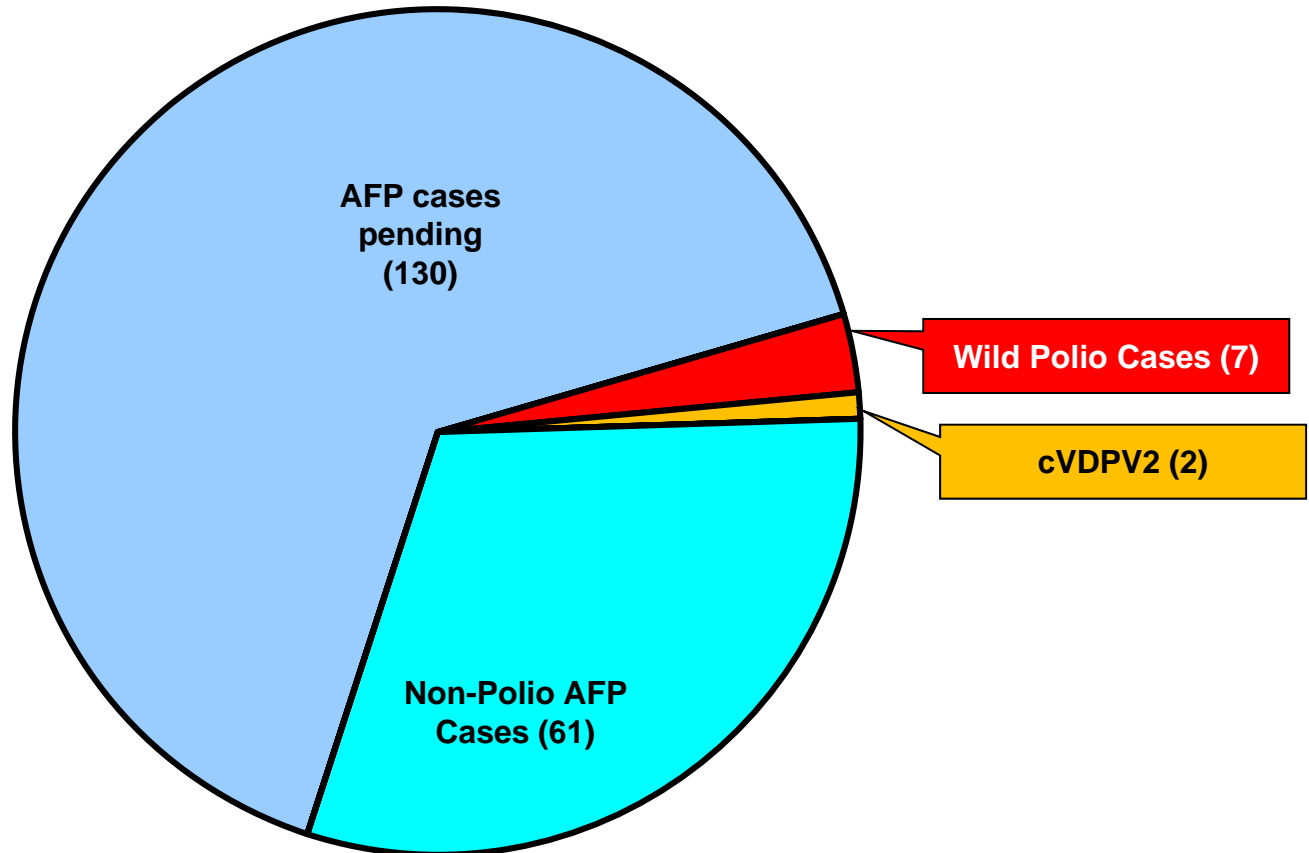


Total AFP Cases Reported = 4744

**^145 Inadequate cases pending classification by ERC;
^91 Inadequate cases not due for FUP
^16 Pending in the Lab**

* Afp.rec Data as of 30-01-2014

AFP Case Profile, 2014*



Total AFP Cases Reported = 200

**^2 Inadequate cases pending classification by ERC;
^6 Inadequate cases not due for FUP
^122 Pending in the Lab**

* Afp.rec Data as of 30-01-2014

Point in Time Comparison of polio cases by province/region 2012 & 2013*

Region/ Province	No. of polio cases		No. of infected districts/towns		Last polio case
	2012	2013	2012	2013	
Khyber Pakhtunkhwa	27	11	13	6	31-Dec-13
FATA / FR Areas	20	65	6	5	28-Dec-13
Sindh	4	10	4	7	31-Dec-13
Balochistan	4	-	2	-	02-Oct-12
Punjab	2	7	2	5	12-Dec-13
Gilgit-Baltistan	1	-	1	-	06-Aug-12
Pakistan	58	93	28	23	31-Dec-13

7 Polio Cases for 2014 reported from FATA, North Waziristan Agency

Six additional districts/town declared infected based on environmental samples in 2013

* Afp.rec Data as of 30-01-2014

Table 1: List of Confirmed Polio Cases, Pakistan 2013* (1/5)

S.NO.	PROVINCE/ REGION	DISTRICT	TEHSIL	EPID NO.	SEX	AGE (m)	DATE ONSET OF PARALYSIS	NO. OPV DOSES (based on parents recall)		FEVER	Asymmetric Paralysis	Rapid Progression	REFUSAL	W/PV TYPE	GENETICS
								Route	SIA's						Cluster
1	SINDH	BIN QASIM	BIN QASIM	SD/62/13/001	M	24	14-Jan-13	0	0	N	Y	Y	Y	NSL1	R4B
2	KP	BANNU	BANNU	NW/61/13/002	M	13	26-Jan-13	0	0	Y	N	Y	Y	NSL1	R4B
3	PUNJAB	MIWANWALI	ISAKHEL	PB/43/13/005	F	36	07-Feb-13	3	7+	Y	N	Y	N	NSL1	R4B
4	KP	MALAKAND	DARGAI	NW/20/13/006	F	3	08-Feb-13	2	2	Y	N	Y	N	NSL1	R4B
5	KP	MARDAN	MARDAN	NW/40/13/009	M	30	12-Feb-13	3	7+	Y	N	Y	N	NSL1	R4B
6	SINDH	DADU	MEHAR	SD/24/13/006	F	15	22-Mar-13	0	2	Y	N	Y	N	NSL1	R2B
7	KP	MARDAN	MARDAN	NW/40/13/026	M	8	22-Apr-13	0	0	Y	Y	Y	Y	NSL1	R4B
8	FATA	KHYBER\$	BARA	FT/34/13/008	M	10	24-Apr-13	2	4	Y	Y	N	N	NSL1	R4B
9	FATA	FR BANNU	FR BANNU	FT/69/13/001	M	16	03-May-13	0	3	Y	Y	Y	Y	NSL1	R4B
10	FATA	KHYBER\$	BARA	FT/34/13/010	M	8	10-May-13	0	0	Y	Y	Y	N	NSL1	R4B
11	FATA	KHYBER\$	BARA	FT/34/13/013	M	24	11-May-13	2	3	Y	N	Y	N	NSL1	R4B
12	FATA	KHYBER\$	BARA	FT/34/13/011	M	23	14-May-13	0	2	Y	Y	Y	N	NSL1	R4B
13	FATA	KHYBER\$	BARA	FT/34/13/012	M	4	16-May-13	0	0	Y	N	Y	N	NSL1	R4B
14	FATA	FR BANNU	FR BANNU	FT/69/13/002	F	22	19-May-13	0	7+	Y	N	Y	N	NSL1	R4B
15	FATA	KHYBER\$	BARA	FT/34/13/014	M	30	20-May-13	0	0	Y	N	Y	N	NSL1	R4A
16	FATA	WAZIR-N\$	MIR ALI	FT/64/13/010	M	9	24-May-13	0	0	Y	Y	Y	N	NSL1	R4B
17	PUNJAB	MBDIN	MALIKWAL	PB/24/13/013	F	96	26-May-13	3	7+	Y	Y	Y	N	NSL1	R4B
18	FATA	KHYBER\$	BARA	FT/34/13/015	M	15	06-June-13	0	0	Y	Y	Y	N	NSL1	R4B
19	FATA	WAZIR-N\$	MIR ALI	FT/64/13/014	F	11	15-June-13	0	0	Y	Y	Y	N	NSL1	R4B
20	FATA	KHYBER\$	BARA	FT/34/13/019	F	12	23-June-13	0	0	Y	N	Y	N	NSL1	R4B
21	KP	PESHAWAR	PESHAWAR	KP/30/13/042	M	12	30-June-13	0	0	Y	N	Y	Y	NSL1	R4B
22	FATA	KHYBER\$	BARA	FT/34/13/020	F	12	03-July-13	0	0	N	N	Y	N	NSL1	R4B

\$ Security compromised area

* Afp.rec Data as of 30-01-2014

Table 1.1: List of Confirmed Polio Cases, Pakistan 2013* (2/5)

S.NO.	PROVINCE/ REGION	DISTRICT	TEHSIL	EPID NO.	SEX	AGE (m)	DATE ONSET OF PARALYSIS	NO. OPV DOSES (based on parents recall)		FEVER	Asymmetric Paralysis	Rapid Progression	REFUSAL	WPV TYPE	GENETICS
								Route	SIA's						Cluster
23	SINDH	KHIGADDAP	GADDAP	SD/63/13/015	F	12	09-July-13	3	6	Y	Y	Y	N	NSL1	R4B
24	FATA	WAZIR-N\$	MIRAN SHAH	FT/64/13/018	F	18	13-July-13	0	0	Y	Y	Y	N	NSL1	R4B
25	FATA	FR BANNU	FR BANNU	FT/69/13/006	M	18	27-July-13	0	7+^	Y	N	Y	N	NSL1	R4B
26	FATA	WAZIR-N\$	MIR ALI	FT/64/13/032	F	21	05-Aug-13	0	0	Y	Y	Y	N	NSL1	R4B
27	FATA	WAZIR-N\$	RAZMAK	FT/64/13/033	M	11	11-Aug-13	0	0	Y	Y	Y	N	NSL1	R4B
28	KP	KOHAT	KOHAT	KP/50/13/017	F	10	19-Aug-13	0	5	Y	Y	Y	N	NSL1	R4B
29	FATA	WAZIR-N\$	RAZMAK	FT/64/13/044	M	8	24-Aug-13	0	0	Y	N	Y	N	NSL1	R4B
30	FATA	FR DIKHAN	FR DIKHAN	FT/68/13/001	M	36	26-Aug-13	1	1	Y	N	Y	N	NSL1	R4B
31	FATA	KHYBER\$	BARA	FT/34/13/027	F	13	30-Aug-13	0	2	Y	Y	Y	N	NSL1	R4A
32	FATA	KHYBER\$	LANDI KOTAL	FT/34/13/028	M	18	30-Aug-13	0	0	Y	Y	Y	N	NSL1	R4A
33	KP	PESHAWAR	PESHAWAR	KP/30/13/068	M	6	31-Aug-13	0	0	Y	Y	Y	N	NSL1	R4B
34	FATA	WAZIR-N\$	MIR ALI	FT/64/13/050	F	13	01-Sep-13	0	0	Y	Y	Y	N	NSL1	R4B
35	FATA	WAZIR-N\$	MIRAN SHAH	FT/64/13/051	F	11	05-Sep-13	0	0	Y	Y	Y	N	NSL1	R4B
36	FATA	KHYBER\$	LANDI KOTAL	FT/34/13/032	F	8	05-Sep-13	0	4	Y	Y	Y	N	NSL1	R4A
37	FATA	WAZIR-N\$	RAZMAK	FT/64/13/053	F	17	06-Sep-13	0	0	Y	Y	Y	N	NSL1	R4B
38	FATA	WAZIR-N\$	MIR ALI	FT/64/13/055	F	7	08-Sep-13	1	0	Y	Y	Y	N	NSL1	R4B
39	KP	SWABI	SWABI	KP/41/13/037	F	2	10-Sep-13	0	0	Y	Y	Y	N	NSL1	R4B
40	FATA	KHYBER\$	BARA	FT/34/13/029	M	11	10-Sep-13	3	7+	Y	Y	Y	N	NSL1	R4B
41	FATA	WAZIR-N\$	MIR ALI	FT/64/13/056	M	10	10-Sep-13	3	0	Y	Y	Y	N	NSL1	R4B
42	SINDH	KHIGADAP	GADAP	SD/63/13/022	M	12	19-Sep-13	0	6^	Y	Y	Y	N	NSL1	R4B
43	FATA	WAZIR-N\$	MIR ALI	FT/64/13/068	F	16	20-Sep-13	0	0	Y	Y	Y	N	NSL1	R4B
44	FATA	WAZIR-N\$	MIR ALI	FT/64/13/069	F	12	20-Sep-13	0	0	Y	Y	Y	N	NSL1	R4B

\$ Security compromised area

^Under investigation

* Afp.rec Data as of 30-01-2014

Table 1.2: List of Confirmed Polio Cases, Pakistan 2013* (3/5)

S.NO.	PROVINCE/ REGION	DISTRICT	TEHSIL	EPID NO.	SEX	AGE (m)	DATE ONSET OF PARALYSIS	NO. OPV DOSES (based on parents recall)		FEVER	Asymmetric Paralysis	Rapid Progression	REFUSAL	W/PV TYPE	GENETICS
								Route	SIA's						Cluster
45	FATA	FR BANNU	FR BANNU	FT/69/13/013	F	12	22-Sep-13	0	0	Y	Y	Y	N	NSL1	R4B
46	FATA	KHYBER\$	BARA	FT/34/13/030	M	15	24-Sep-13	3	0	Y	Y	Y	N	NSL1	R4B
47	KP	PESHAWAR	PESHAWAR	KP/30/13/079	M	8	24-Sep-13	3	7^	Y	N	Y	N	NSL1	R4B
48	FATA	KHYBER\$	BARA	FT/34/13/033	M	30	26-Sep-13	3	3	Y	Y	Y	N	NSL1	R4A
49	FATA	WAZIR-N\$	MIR ALI	FT/64/13/071	M	8	26-Sep-13	0	0	Y	Y	Y	N	NSL1	R4B
50	PUNJAB	SHEIKUPURA	MURIDKE	PB/33/13/057	M	12	26-Sep-13	0	2	Y	N	Y	N	NSL1	R4B
51	FATA	FR BANNU	FR BANNU	FT/69/13/016	F	24	28-Sep-13	0	0	Y	Y	Y	N	NSL1	R4B
52	FATA	WAZIR-N\$	MIR ALI	FT/64/13/074	F	37	28-Sep-13	0	0	Y	Y	Y	N	NSL1	R4B
53	FATA	FR BANNU	FR BANNU	FT/69/13/017	M	11	01-Oct-13	0	0	Y	Y	Y	N	NSL1	R4B
54	SINDH	KASHMORE	TANGWANI	SD/54/13/010	F	10	03-Oct-13	2	5	N	N	N	N	NSL1	R3B
55	FATA	KHYBER\$	LANDI KOTAL	FT/34/13/036	M	12	05-Oct-13	0	7^	Y	Y	Y	N	NSL1	R4B
56	PUNJAB	TTSINGH	KAMALIA	PB/52/13/045	M	9	09-Oct-13	3	4	Y	N	Y	N	NSL1	R4B
57	FATA	WAZIR-N\$	MIR ALI	FT/64/13/084	F	18	09-Oct-13	0	0	Y	Y	Y	N	NSL1	R4B
58	FATA	WAZIR-N\$	RAZMAK	FT/64/13/083	M	15	11-Oct-13	0	0	Y	Y	Y	N	NSL1	R4B
59	FATA	WAZIR-N\$	MIR ALI	FT/64/13/087	F	13	14-Oct-13	0	0	Y	Y	Y	N	NSL1	R4B
60	FATA	KHYBER\$	BARA	FT/34/13/040	M	9	15-Oct-13	0	0	Y	Y	Y	N	NSL1	R4A
61	FATA	WAZIR-N\$	MIR ALI	FT/64/13/086	M	15	16-Oct-13	0	0	Y	Y	Y	N	NSL1	R4B
62	SINDH	BIN QASIM	BIN QASIM	SD/62/13/011	M	8	18-Oct-13	3	1	Y	Y	Y	N	NSL1	R4B
63	PUNJAB	TTSINGH	KAMALIA	PB/52/13/046	F	13	21-Oct-13	1	5	Y	Y	Y	N	NSL1	R4B
64	PUNJAB	SAHIWAL	SAHIWAL	PB/65/13/047	M	15	21-Oct-13	3	6	Y	N	Y	N	NSL1	R4B
65	FATA	WAZIR-N\$	MIRAN SHAH	FT/64/13/093	M	24	25-Oct-13	0	0	Y	Y	Y	N	NSL1	R4B
66	KP	PESHAWAR	PESHAWAR	KP/30/13/088	M	9	26-Oct-13	0	7^	Y	Y	Y	N	NSL1	R4B

\$ Security compromised area

^Under investigation

* Afp.rec Data as of 30-01-2014

Table 1.3: List of Confirmed Polio Cases, Pakistan 2013* (4/5)

S.NO.	PROVINCE/ REGION	DISTRICT	TEHSIL	EPID NO.	SEX	AGE (m)	DATE OF ONSET PARALYSIS	NO. OPV DOSES (based on parents recall)		FEVER	Asymetric Paralysis	Rapid Progression	REFUSAL	WPV TYPE	GENETICS
								Route	SIA's						Cluster
67	FATA	KHYBER\$	LANDI KOTAL	FT/34/13/046	M	16	01-Nov-13	0	7^	Y	Y	Y	N	NSL1	R4B
68	FATA	FR BANNU	FR BANNU	FT/69/13/023	M	14	04-Nov-13	0	0	Y	Y	Y	N	NSL1	R4B
69	FATA	KHYBER\$	LANDI KOTAL	FT/34/13/047	M	12	06-Nov-13	0	0	Y	N	Y	N	NSL1	R4A
70	SINDH	BALDIA	BALDIA	SD/61/13/011	F	4	09-Nov-13	0	0	Y	N	Y	N	NSL1	R4B
71	FATA	WAZIR-N\$	MIRAN SHAH	FT/64/13/107	F	24	11-Nov-13	0	0	Y	N	Y	N	NSL1	R4B
72	FATA	WAZIR-N\$	MIR ALI	FT/64/13/109	M	24	12-Nov-13	0	0	Y	Y	Y	N	NSL1	R4B
73	FATA	WAZIR-N\$	MIRAN SHAH	FT/64/13/113	M	12	15-Nov-13	0	0	Y	Y	Y	N	NSL1	R4B
74	FATA	WAZIR-N\$	MIRAN SHAH	FT/64/13/106	F	36	16-Nov-13	0	0	Y	N	Y	N	NSL1	R4B
75	FATA	WAZIR-N\$	MIR ALI	FT/64/13/116	M	11	26-Nov-13	0	0	Y	Y	Y	N	NSL1	R4B
76	FATA	WAZIR-N\$	MIRAN SHAH	FT/64/13/119	M	11	28-Nov-13	0	0	Y	N	Y	N	NSL1	R4B
77	FATA	WAZIR-N\$	MIRAN SHAH	FT/64/13/120	F	12	01-Dec-13	1	0	Y	Y	Y	N	NSL1	R4B
78	FATA	WAZIR-N\$	MIRAN SHAH	FT/64/13/124	M	10	04-Dec-13	0	0	Y	Y	Y	N	NSL1	R4B
79	FATA	WAZIR-S\$	WANA	FT/65/13/014	F	12	04-Dec-13	0	0	Y	Y	Y	N	NSL1	R4B
80	FATA	WAZIR-N\$	MIR ALI	FT/64/13/125	F	18	08-Dec-13	0	0	Y	N	Y	N	NSL1	R4B
81	FATA	WAZIR-N\$	MIRAN SHAH	FT/64/13/126	F	18	09-Dec-13	0	0	Y	Y	Y	N	NSL1	R4B
82	FATA	WAZIR-N\$	MIR ALI	FT/64/13/127	M	24	10-Dec-13	0	0	Y	Y	Y	N	NSL1	R4B
83	SINDH	BALDIA	BALDIA	SD/61/13/012	M	24	10-Dec-13	2	4	Y	Y	Y	N	NSL1	R4B
84	SINDH	KHIGIQBAL	G-IQBAL	SD/65/13/017	F	13	11-Dec-13	2	7^	Y	Y	Y	N	NSL1	R4B
85	PUNJAB	TTSINGH	KAMALIA	PB/52/13/058	M	14	12-Dec-13	3	7^	Y	N	Y	N	NSL1	R4B
86	FATA	WAZIR-S\$	LADHA	FT/65/13/015	M	15	16-Dec-13	0	0	Y	Y	Y	N	NSL1	R4B
87	FATA	WAZIR-N\$	MIRAN SHAH	FT/64/13/131	M	24	16-Dec-13	0	0	Y	Y	Y	N	NSL1	R4B
88	FATA	WAZIR-N\$	MIRAN SHAH	FT/64/13/132	M	15	22-Dec-13	0	0	Y	Y	Y	N	NSL1	R4B

\$ Security compromised area

New Case

^Under investigation

* Afp.rec Data as of 30-01-2014

Table 1.4: List of Confirmed Polio Cases, Pakistan 2013* (5/5)

S.NO.	PROVINCE/ REGION	DISTRICT	TEHSIL	EPID NO.	SEX	AGE (m)	DATE ONSET OF PARALYSIS	NO. OPV DOSES (based on parents recall)		FEVER	Asymmetric Paralysis	Rapid Progression	REFUSAL	WPV TYPE	GENETICS
								Route	SIA's						Cluster
89	FATA	WAZIR-N\$	MIRAN SHAH	FT/64/13/133	M	18	22-Dec-13	0	0	Y	Y	Y	N	NSL1	R4B
90	FATA	WAZIR-N\$	MIRAN SHAH	FT/64/13/134	F	18	26-Dec-13	0	0	Y	Y	Y	N	NSL1	R4B
91	FATA	KHYBER\$	BARA	FT/34/13/055	M	15	28-Dec-13	3	0	Y	Y	Y	N	NSL1	
92	KP	PESHAWAR	PESHAWAR	KP/30/13/121	F	11	31-Dec-13	3	0	Y	Y	Y	N	NSL1	
93	SINDH	KHILANDHI	LANDHI	SD/69/13/012	M	2	31-Dec-13	0	0	Y	N	Y	N	NSL1	

\$ Security compromised area

New Case

^Under investigation

* Afp.rec Data as of 30-01-2014

Table 1: List of Confirmed Polio Cases, Pakistan 2014* (1/1)

S.NO.	PROVINCE/ REGION	DISTRICT	TEHSIL	EPID NO.	SEX	AGE (m)	DATE ONSET OF PARALYSIS	NO. OPV DOSES (based on parents recall)		FEVER	Asymmetric Paralysis	Rapid Progression	REFUSAL	WPV TYPE	GENETICS
								Routi ne	SIA's						Cluster
1	FATA	WAZIR-N\$	MIR ALI	FT/64/14/006	F	19	03-Jan-14	0	0	Y	Y	Y	N	NSL1	
2	FATA	WAZIR-N\$	MIR ALI	FT/64/14/003	M	14	03-Jan-14	0	0	Y	Y	Y	N	NSL1	
3	FATA	WAZIR-N\$	MIR ALI	FT/64/14/007	F	8	04-Jan-14	0	0	Y	Y	Y	N	NSL1	
4	FATA	WAZIR-N\$	MIRAN SHAH	FT/64/14/004	F	13	04-Jan-14	0	0	Y	Y	Y	N	NSL1	
5	FATA	WAZIR-N\$	MIRAN SHAH	FT/64/14/005	F	17	05-Jan-14	0	0	Y	Y	Y	N	NSL1	
6	FATA	WAZIR-N\$	MIRAN SHAH	FT/64/14/011	F	12	10-Jan-14	0	0	Y	Y	Y	N	NSL1	
7	FATA	WAZIR-N\$	MIR ALI	FT/64/14/012	M	23	16-Jan-14	0	0	Y	Y	Y	N	NSL1	

\$ Security compromised area

New Case

^Under investigation

* Afp.rec Data as of 30-01-2014

Table 2: LAB Update 2013*

Month of Onset	AFP Cases	No virus isolated	Cases Under Process		Isolated Viruses from stools						
			Culture	ITD	Vaccine viruses		NPEV		Wild	Results within 14 days	
			n	n	n	n	%	n	%	n	n
January	333	275	0	0	19	6	37	11%	2	333	100%
February	330	285	0	0	16	5	26	8%	3	330	100%
March	308	248	0	0	7	2	52	17%	1	308	100%
April	352	244	0	0	22	6	84	24%	2	352	100%
May	419	304	0	0	15	4	91	22%	9	419	100%
June	469	326	0	0	21	4	118	25%	4	469	100%
July	391	239	0	0	13	3	135	35%	4	391	100%
August	459	292	0	0	24	5	135	29%	8	459	100%
September	466	297	0	0	32	7	119	26%	19	467	100%
October	407	307	0	0	25	6	63	15%	14	409	100%
November	373	272	0	0	27	7	65	17%	10	374	100%
December	360	273	2	0	17	5	53	15%	17	360	100%
Pakistan	4667	3362	2	0	238	5	978	21%	93	4671	100%
January	248	100	97	7	4	2	32	13%	7	143	58%

* Data as of 03-01-2014

Table 3: Urgent / ITD Pending Cases (1/1)

S. #	Basic information								OPV doses				Urgent		Prov Diagnosis	Lab update			Remarks
	District	Tehsil	Union council	Epid number	Date of Onset	Age (M)	Sex	Date of 1st stool	Stool Adeq	RI	SIA's	Last 6 SIA's	Last dose	By Field		By NSCY	Lab No.	Days Inoc	
Isolates pending for ITSD																			
1	BOLAN *	#		BN/42/14/001	19-Jan-14	66	M	21-Jan-14		#	#			N	#	290	4	L20B+	
2	KECH *	TURBAT / KECH	ABSOR	BN/61/14/001	12-Jan-14	46	M	20-Jan-14	Y	3	7+	6	15-Nov-13	N		219	9	L20B+	
3	WAZIR-N §	MIRAN SHAH	MADA KHEL	FT/64/14/010	11-Jan-14	13	F	15-Jan-14	Y	0	0	0		Y	Y	240	7	SL2	Waiting rRTPCR for VDPV screening
4	WAZIR-N *	MIRAN SHAH	HAMZONI 2	FT/64/14/016	17-Jan-14	10	M	19-Jan-14	Y	0	0	0		Y	Y	232	7	L20B+	
5	MULTAN §	JALALPUR PIRWALA	LAALWAH	PB/61/14/005	08-Jan-14	30	M	20-Jan-14	Y	3	7+	6	12-Dec-13	N		216	10	SL1	Waiting rRTPCR for VDPV screening
6	SHEIKUPURA §	FEROZEWALA	F-32	PB/33/14/004	13-Jan-14	63	M	18-Jan-14	Y	3	7+	6	18-Nov-13	N		193	12	SL1	Waiting rRTPCR for VDPV screening
7	DADU *	K.N.SHAH	MITHO BABAR	SD/24/14/003	12-Jan-14	30	F	20-Jan-14	Y	3	6	6	13-Dec-13	N		222	9	L20B+	
Reported urgent (by field / NSCY criteria)																			
8	KABDULAH	CHAMAN	MEHMOODABA D 1	BN/14/14/001	17-Jan-14	6	F	22-Jan-14	Y	0	2	2	26-Dec-13	N	Y	242	8	UP	SERVICE DELIVER ISSUES
9	WAZIR-N	MIRAN SHAH	MIRAN SHAH	FT/64/14/013	15-Jan-14	6	F	19-Jan-14	Y	0	0	0		Y	Y	237	8	UP	
10	WAZIR-N	MIRAN SHAH	HAMZONI-1	FT/64/14/014	17-Jan-14	18	F	24-Jan-14	N	0	0	0		Y	Y	244	8	UP	
11	WAZIR-N	MIRAN SHAH	LAND	FT/64/14/015	18-Jan-14	12	M	20-Jan-14	Y	0	0	0		Y	Y	233	8	UP	
12	WAZIR-N	MIR ALI	MUHAMMAD	FT/64/14/018	11-Jan-14	12	M	24-Jan-14	N	0	0	0		Y	Y	261	7	UP	
13	PESHAWAR *	PESHAWAR	BADABER HUREZAI	KP/30/14/008	31-Jan-14	6	M		#	3	3	3		Y	Y				STOOL COLLECTION IS UNDER PROCESS
14	RAWALPINDI	TAXILA	SARE KALA	PB/11/14/003	20-Jan-14	11	M	25-Jan-14	Y	3	0	0		Y	Y	267	7	UP	
15	DADU	JOHI	T.R.KHAN	SD/24/14/004	15-Jan-14	36	M	21-Jan-14	Y	0	6	6	14-Dec-13	N	Y	223	10	UP	
16	KHIBALDIA	BALDIA	2	SD/61/14/001	13-Jan-14	8	M	18-Jan-14	Y	0	0	0		Y	Y	236	8	UP	REFUSAL
17	KHIGADAP	GADAP	4	SD/63/14/002	11-Jan-14	18	F	17-Jan-14	Y	3	0	0		Y	Y	238	8	UP	REFUSAL
<p>* New addition § New results #Data not available † NSC Criteria = Fever , Rapid Progress, Age < 48 months and OPV Doses <7 UP = Under process</p> <p style="text-align: center;">Urgent (Field/NSC) / Inadequate specimens / Age 12-35 months / Zero OPV dose ‡ Pending for genomic sequencing</p>																			

* Data as of 03-01-2014

Environmental Surveillance Results, Pakistan (Last 52 weeks)

Sites	Total samples	Positive	Negative	UP ^A	2013																																																				2014																																	
					February							March							April							May							June							July							August							September							October						November						December						January						Feb					
					7	8	9	10	11	12	13	14	15	16	17	18	19	20	21	22	23	24	25	26	27	28	29	30	31	32	33	34	35	36	37	38	39	40	41	42	43	44	45	46	47	48	49	50	51	52	1	2	3	4	5	6																																		
MULTAN	35	2	31	2																																																																																						
Ali Town	12	1	10	1																																																																																						
Kotla A. Fateh	12	0	11	1																																																																																						
Suraj Miani	11	1	10	0																																																																																						
LAHORE	59	4	51	4																																																																																						
Gulshan Ravi Station	11	1	10	0																																																																																						
Multan Road Station	12	1	10	1																																																																																						
Outfall Pump Station F	12	0	11	1																																																																																						
Outfall Pump Station G	12	1	10	1																																																																																						
Outfall Pump Station H	12	1	10	1																																																																																						
FAISALABAD	34	0	33	1																																																																																						
Pump Station 03	11	0	11	0																																																																																						
Pump Station 27	11	0	11	0																																																																																						
Ismail City Road	12	0	11	1																																																																																						
RAWALPINDI	11	6	5	0																																																																																						
Safdarabad	11	6	5	0																																																																																						
PUNJAB	139	12	120	7																																																																																						
KHI (BALDIA)	24	3	19	2																																																																																						
Kumhar Wara	12	0	11	1																																																																																						
Sajjan Goth	12	3	8	1																																																																																						
KHI (G.IQBAL)	23	5	17	1																																																																																						
Chakora Nulla	11	0	11	0																																																																																						
Rashid Minhas Rd	12	5	6	1																																																																																						
KHI (GADAAP)	34	13	18	3																																																																																						
Khamiso Goth	11	1	9	1																																																																																						
Macchar Colony	11	7	3	1																																																																																						
Sorab Goth	12	5	6	1																																																																																						
SUKKUR	23	0	22	1																																																																																						
Makka P.Station	11	0	11	0																																																																																						
Miani P.Station	12	0	11	1																																																																																						
HYDERABAD	12	6	6	0																																																																																						
Tulsidas P. Station	12	6	6	0																																																																																						
SINDH	116	27	82	7																																																																																						
PESHAWAR	24	20	3	1																																																																																						
Lara Ma	12	8	3	1																																																																																						
Shaheen Town	12	12	0	0																																																																																						
KP	24	20	3	1																																																																																						
QUETTA	35	2	30	3																																																																																						
Jam-e-Salfia	12	0	11	1																																																																																						
Killi Jattak	11	1	9	1																																																																																						
Surpul	12	1	10	1																																																																																						
BALUCHISTAN	35	2	30	3																																																																																						
PAKISTAN	314	61	235	18																																																																																						

* Data as of 30-01-2014

^AUnder process

Comparison environmental sampling results 2012-13*

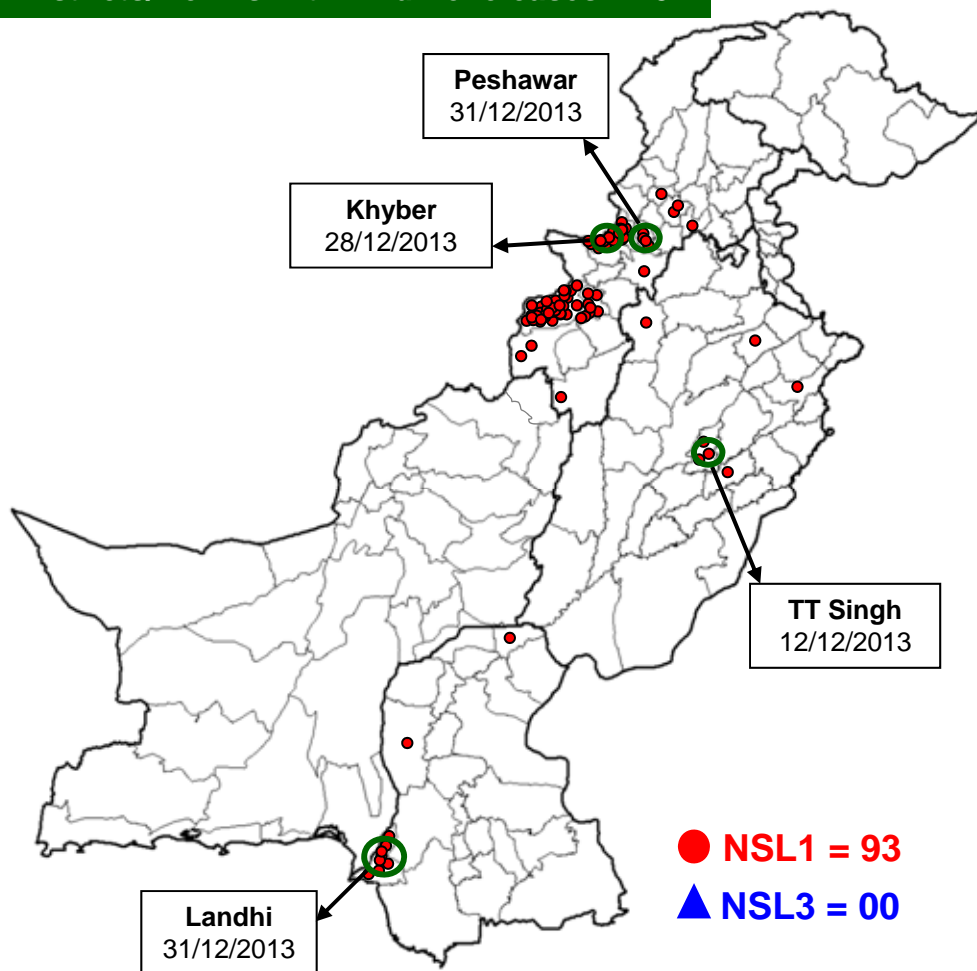
DISTRICT	2012			2013			Last
	TOTAL	WILD		TOTAL	WILD		
	n	n	%	n	n	%	
LAHORE	36	18	50%	60	4	7%	12-Dec-13
MULTAN	36	4	11%	36	2	6%	09-Dec-13
RAWALPINDI	12	7	58%	12	6	42%	25-Nov-13
FAISALABAD	8	1	13%	36	1	3%	03-Jan-13
KHIGIQBAL	24	4	17%	24	5	17%	18-Dec-13
KHIGADAP	24	16	67%	34	14	38%	20-Dec-13
KHIBALDIA	24	1	4%	24	3	8%	23-Dec-13
SUKKUR	17	7	41%	24	0	0%	05-Sep-12
HYDERABAD	6	6	100%	12	7	58%	12-Aug-13
PESHAWAR	24	20	83%	24	21	83%	27-Dec-13
QUETTA	28	4	14%	35	2	3%	28-Dec-13
PAKISTAN	239	88	37%	321	65	18%	28-Dec-13

* Data as of 30-01-2014

Data source Polio RRL

Map1: Distribution of Wild Polio cases Pakistan 2013*

Districts/ Towns with Wild Polio cases = 23



Province/ Country	Date of Last Case		Number of cases 2013	
	P1	P3	P1	P3
PUNJAB	Dec, 2013	Jun, 2010	7	-
SINDH	Dec, 2013	Jan, 2010	10	-
KHYBER- PAKHTUNKHWA	Dec, 2013	Oct, 2010	11	-
FATA	Dec, 2013	Apr, 2012	65	-
BALUCHISTAN	Oct, 2012	Apr, 2010	-	-
AJK	-	Jun, 2000	-	-
GILGIT-BALTISTAN	Aug, 2012	-	-	-
ISLAMABAD	Sep, 2008	Sep, 2008	-	-
PAKISTAN	Dec, 2013	Apr, 2012	93	-

○ District with last polio case in province

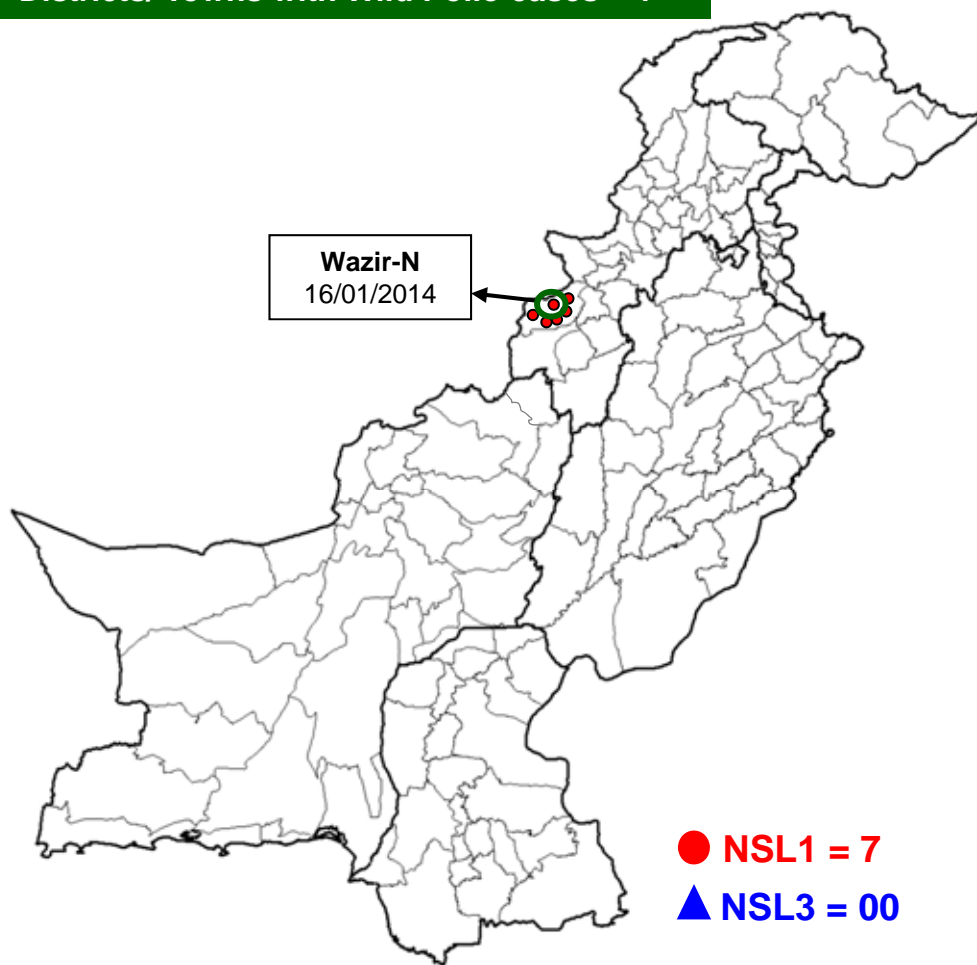
Cases randomly placed
in districts

— Provincial Boundary
— Districts Boundary

* Afp.rec Data as of 30-01-2014

Map1: Distribution of Wild Polio cases Pakistan 2014*

Districts/ Towns with Wild Polio cases = 1



Province/ Country	Date of Last Case		Number of cases 2013	
	P1	P3	P1	P3
PUNJAB	-	Jun, 2010	-	-
SINDH	-	Jan, 2010	-	-
KHYBER- PAKHTUNKHWA	-	Oct, 2010	-	-
FATA	Jan, 2014	Apr, 2012	7	-
BALUCHISTAN	-	Apr, 2010	-	-
AJK	-	Jun, 2000	-	-
GILGIT-BALTISTAN	-	-	-	-
ISLAMABAD	-	Sep, 2008	-	-
PAKISTAN	Jan, 2014	Apr, 2012	7	-

○ District with last polio case in province

Cases randomly placed
in districts

— Provincial Boundary
— Districts Boundary

* Afp.rec Data as of 30-01-2014

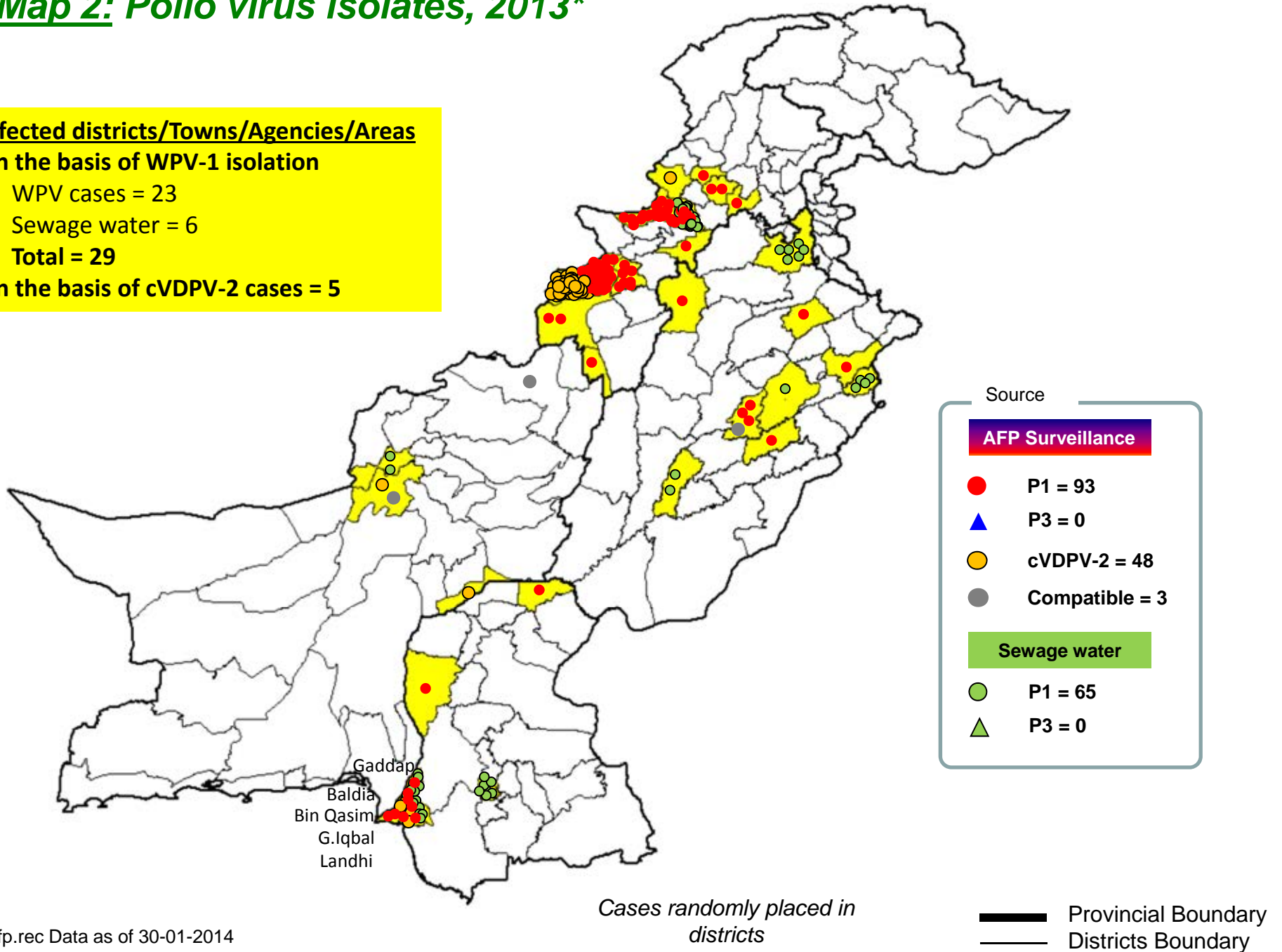
Map 2: Polio virus isolates, 2013*

Infected districts/Towns/Agencies/Areas

On the basis of WPV-1 isolation

- WPV cases = 23
- Sewage water = 6
- Total = 29

On the basis of cVDPV-2 cases = 5



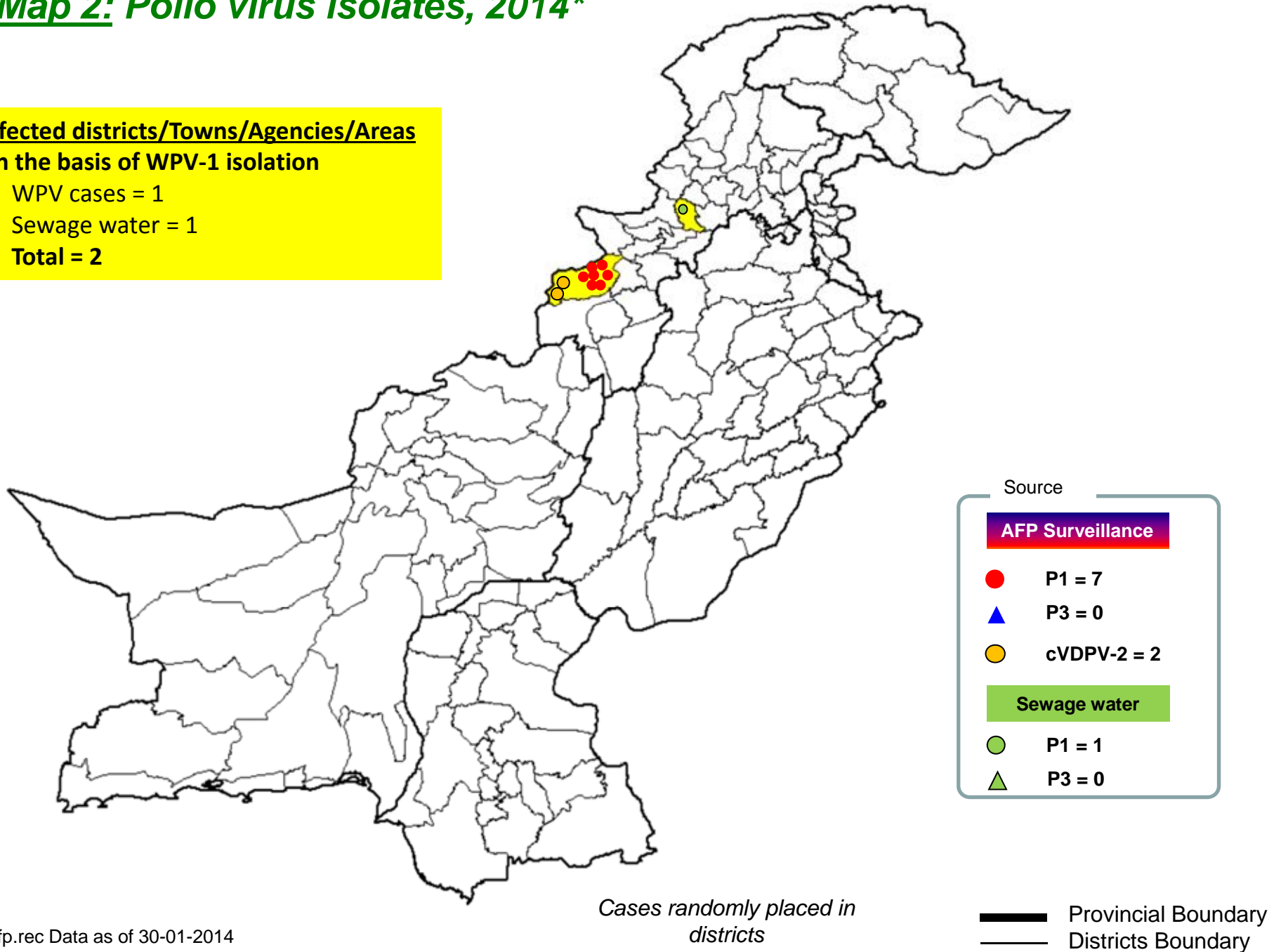
* Afp.rec Data as of 30-01-2014

Map 2: Polio virus isolates, 2014*

Infected districts/Towns/Agencies/Areas

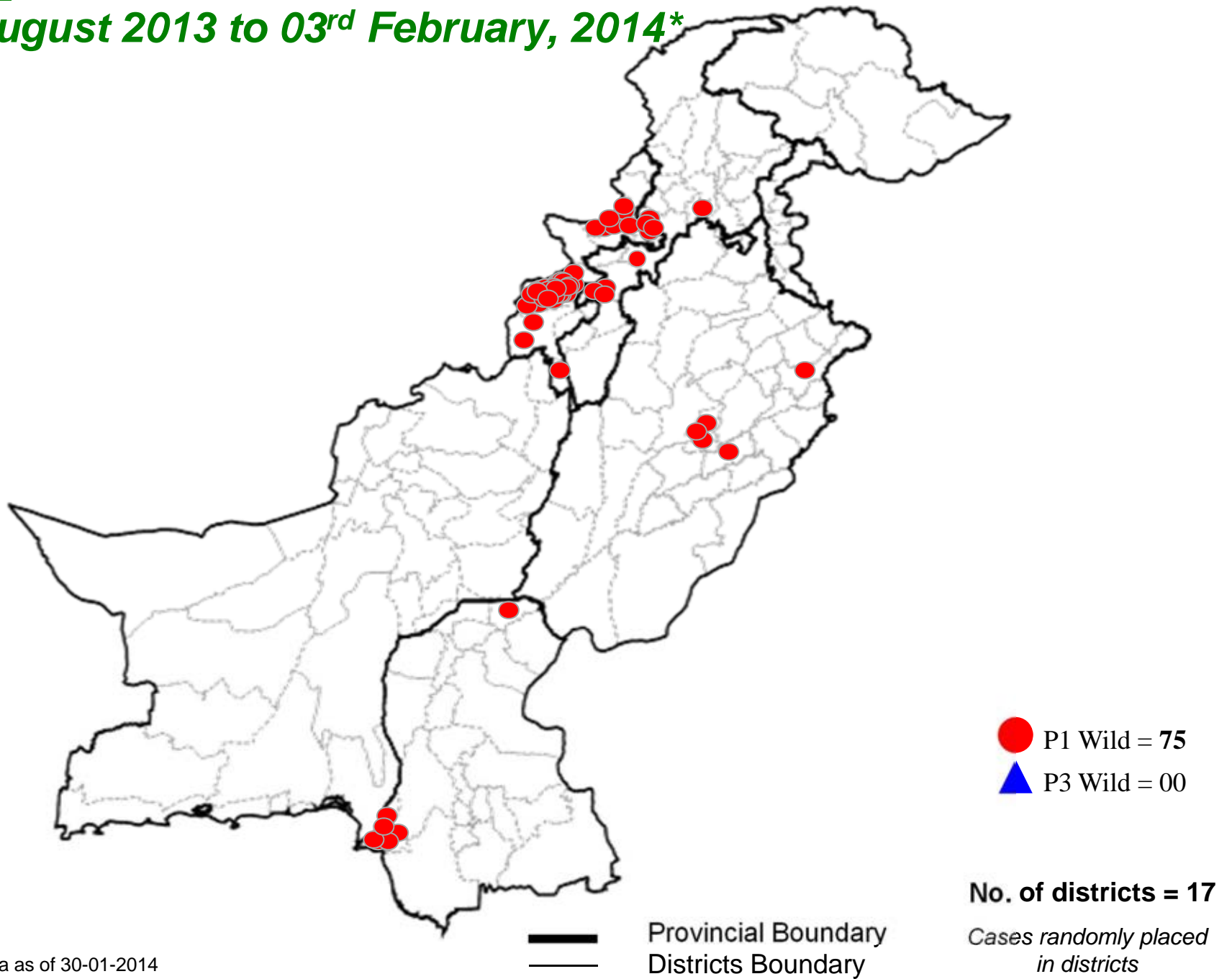
On the basis of WPV-1 isolation

- WPV cases = 1
- Sewage water = 1
- Total = 2



* Afp.rec Data as of 30-01-2014

Map 3: Wild Polio cases in the last 6 months from 04th August 2013 to 03rd February, 2014*



* Afp.rec Data as of 30-01-2014

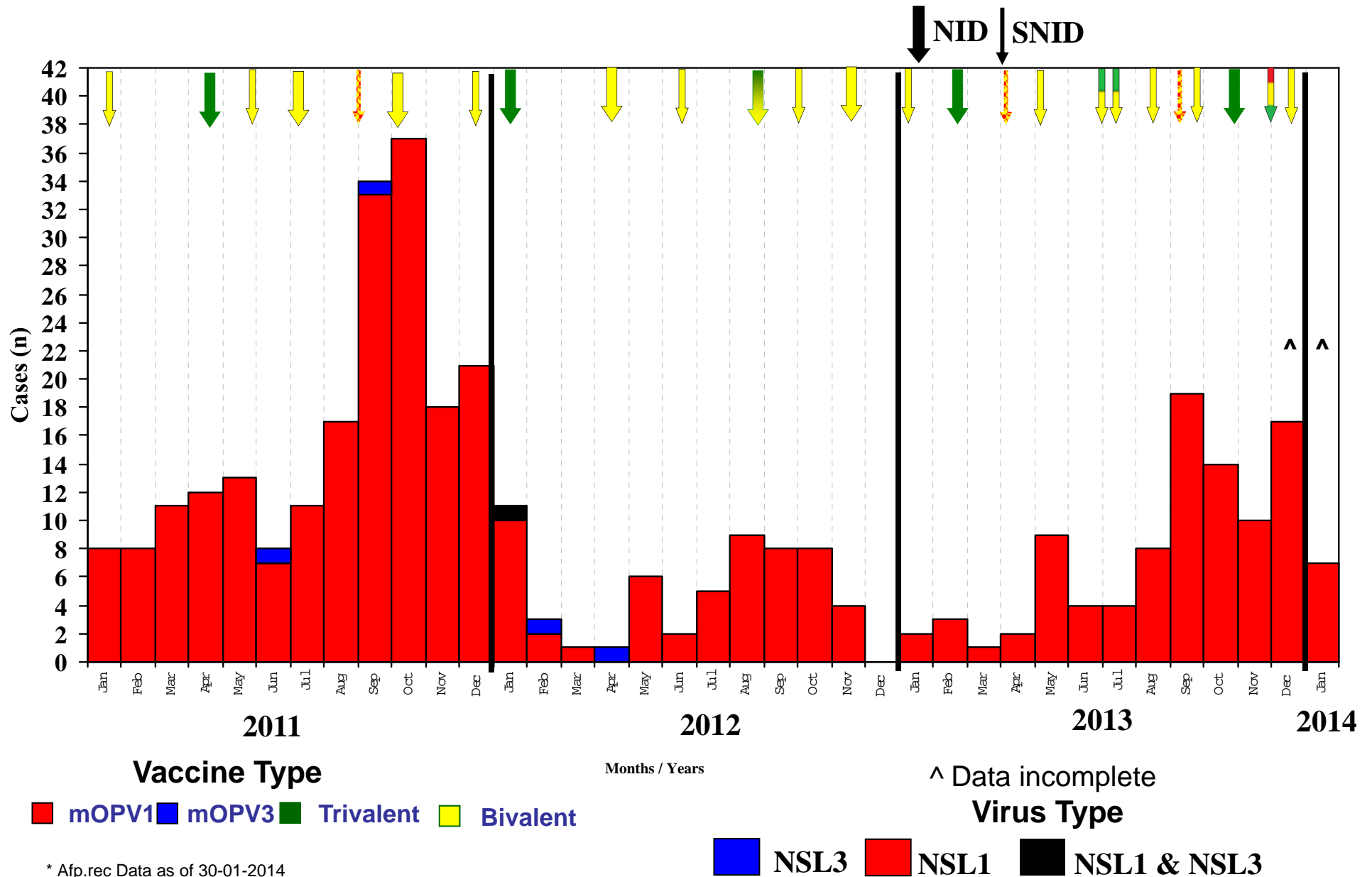
**Table 4: Distribution of AFP Cases By Week of Onset ^
Pakistan 2013-14* [Week number/Ending on]**

PROVINCE	W 42 19 Oct 2013	W 43 26 Oct 2013	W 44 02 Nov 2013	W 45 09 Nov 2013	W 46 16 Nov 2013	W 47 23 Nov 2013	W 48 30 Nov 2013	W 49 07 Dec 2013	W 50 14 Dec 2013	W 51 21 Dec 2013	W 52 28 Dec 2013	W 01 04 Jan 2014	W 02 11 Jan 2014	W 03 18 Jan 2014	W 04 25 Jan 2014
PUNJAB	28	44	45	41	35	42	29	35	40	22	48	29	30	41	15
SINDH	13	22	11	19	18	25	21	15	18	12	16	9	18	16	11
KP	14	23	26	18	18	18	23	19	19	19	23	12	18	11	6
FATA	6	16	10	3	12	7	5	7	5	5	9	8	7	7	0
BALUCHISTAN	2	5	4	5	3	10	3	5	5	2	4	1	4	4	3
AJK	0	1	1	2	0	1	1	2	0	0	2	1	2	0	0
GILGIT BILTISTAN	0	1	0	1	1	0	1	1	0	0	0	0	0	0	0
ISLAMABAD	0	0	0	0	0	0	0	0	0	0	1	0	0	0	0
PAKISTAN	63	112	97	89	87	103	83	84	87	60	103	60	79	79	35

* Afp.rec & Afplab.rec: Data as of 30-01-2014

^ MMWR Epidemiological Weeks

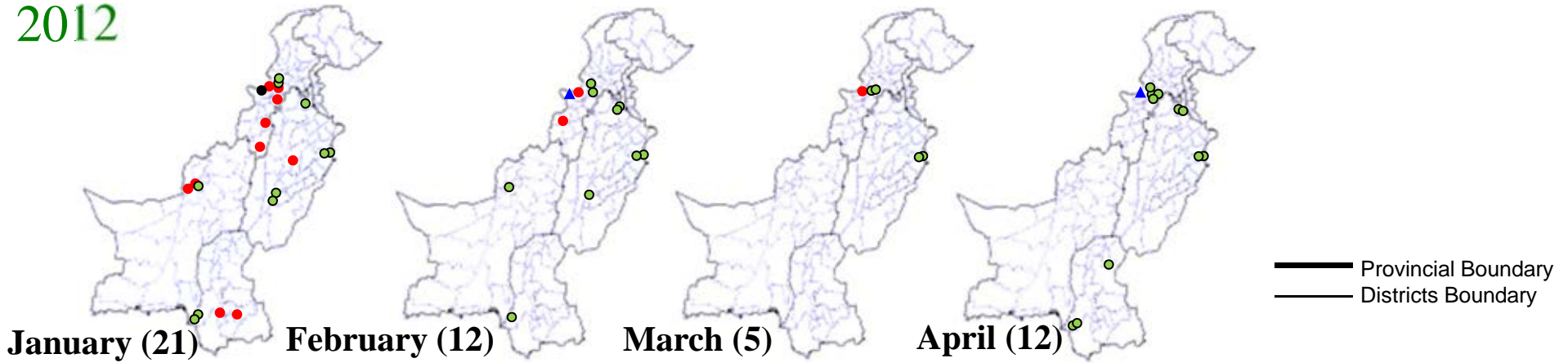
Confirmed Polio Cases By Poliovirus Type, 2011-2014*



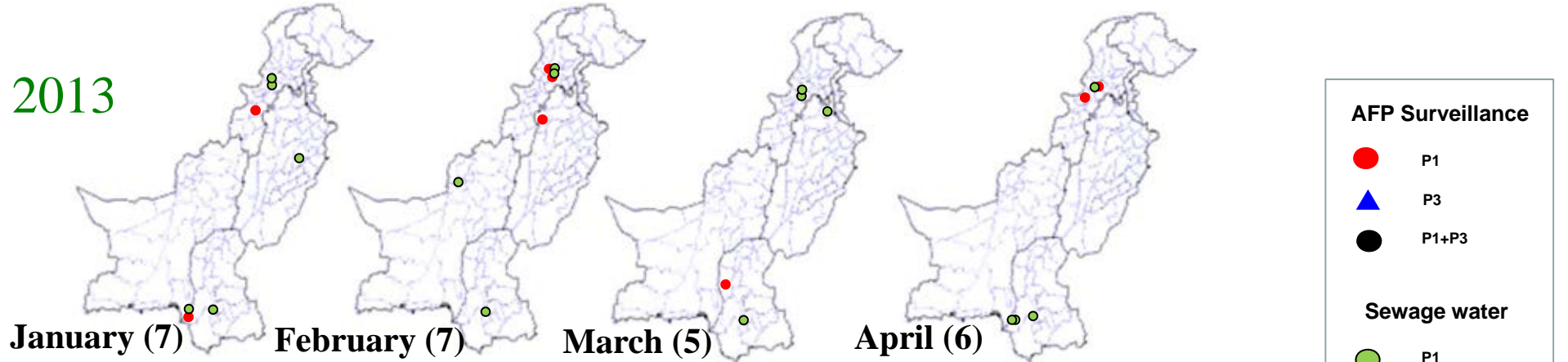
* Afp.rec Data as of 30-01-2014

Map 4: Monthly Comparison of P1 & P3 Polio Cases/Isolates 2012-2014*

2012



2013



2014



AFP Surveillance

- P1
- ▲ P3
- P1+P3

Sewage water

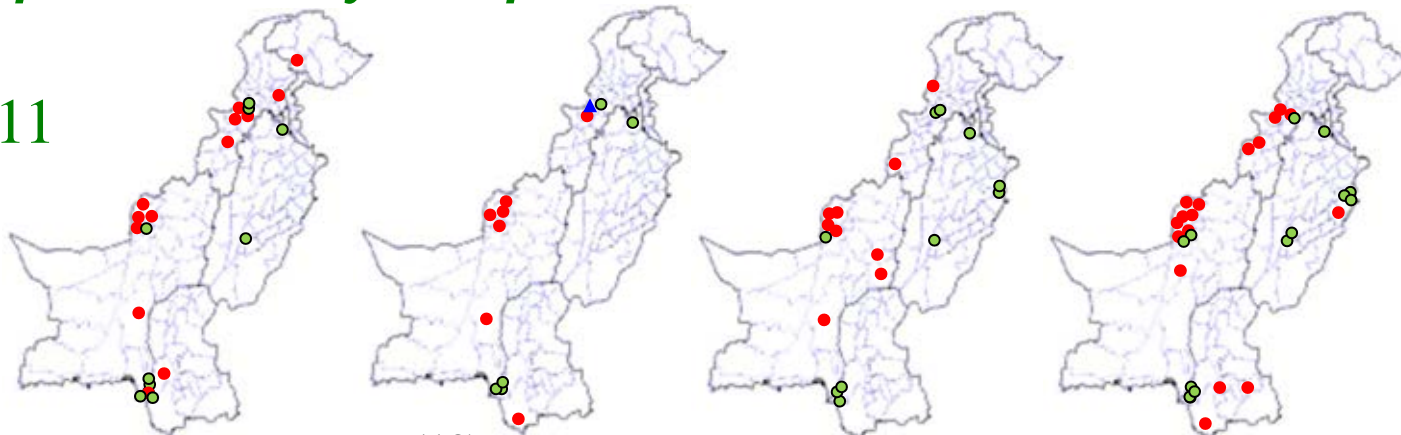
- P1
- P3
- Mixture P1 & 3

Environmental surveillance Started:
 July, 2009: Lahore & Karachi
 June, 2010: Rawalpindi, Peshawar & Quetta
 July, 2010: Multan
 April 2012: Sukkur
 Hyderabad: July 2012
 Faisalabad: September 2012

* Afp.rec Data as of 30-01-2014

Map 4.1: Monthly Comparison of P1 & P3 Polio Cases/Isolates 2011-2013*

2011



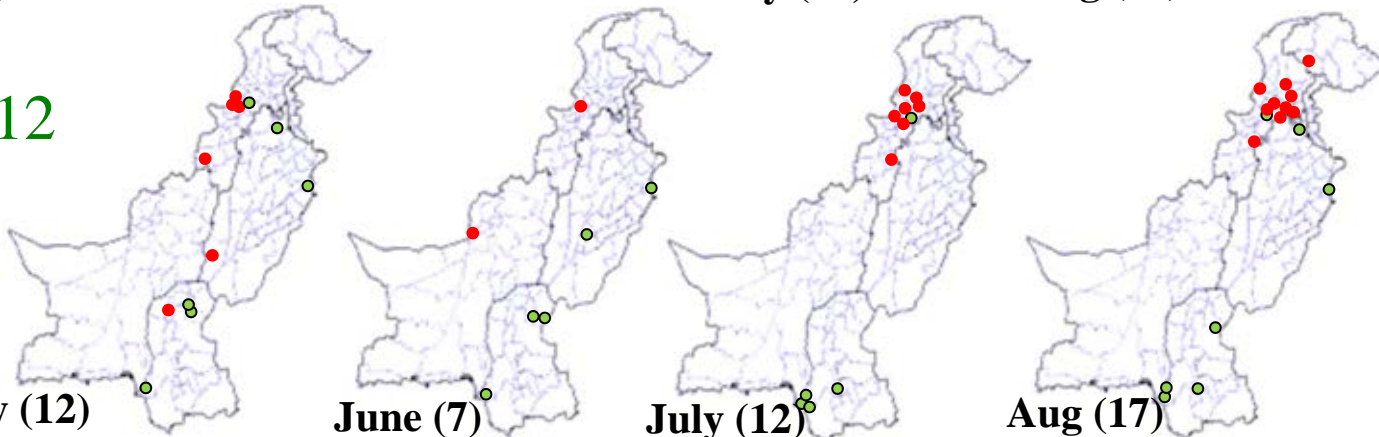
May (22)

June (13)

July (19)

Aug (30)

2012



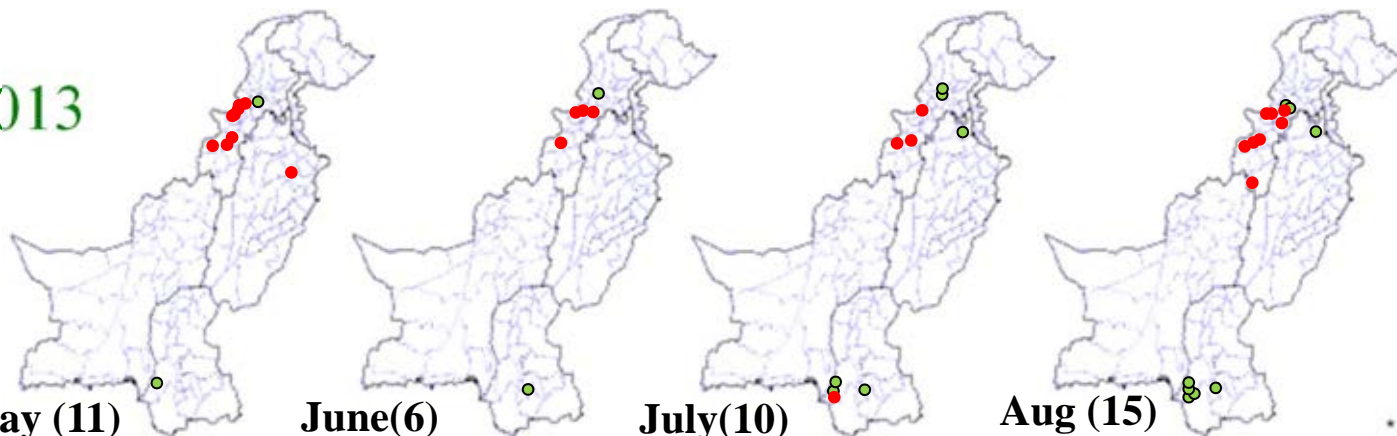
May (12)

June (7)

July (12)

Aug (17)

2013



May (11)

June(6)

July(10)

Aug (15)

AFP Surveillance

- P1
- ▲ P3
- Mixture P1 & 3

Sewage water

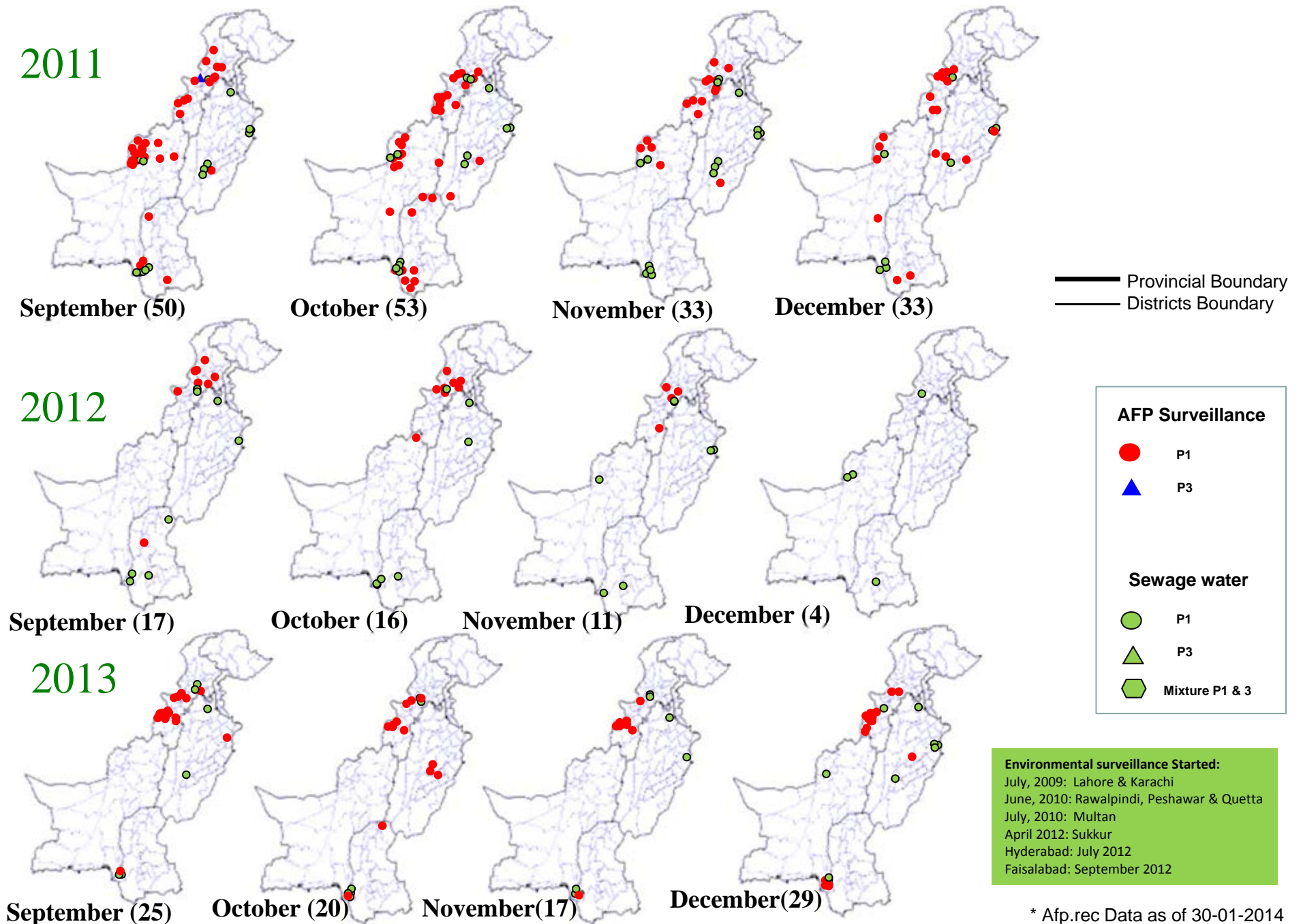
- P1
- ▲ P3
- ⬡ Mixture P1 & 3

Environmental surveillance Started:

July, 2009: Lahore & Karachi
 June, 2010: Rawalpindi, Peshawar & Quetta
 July, 2010: Multan
 April 2012: Sukkur
 Hyderabad: July 2012
 Faisalabad: September 2012

* Afp.rec Data as of 30-01-2014

Map 4.2: Monthly Comparison of P1 & P3 Polio Cases/Isolates 2011-2013*

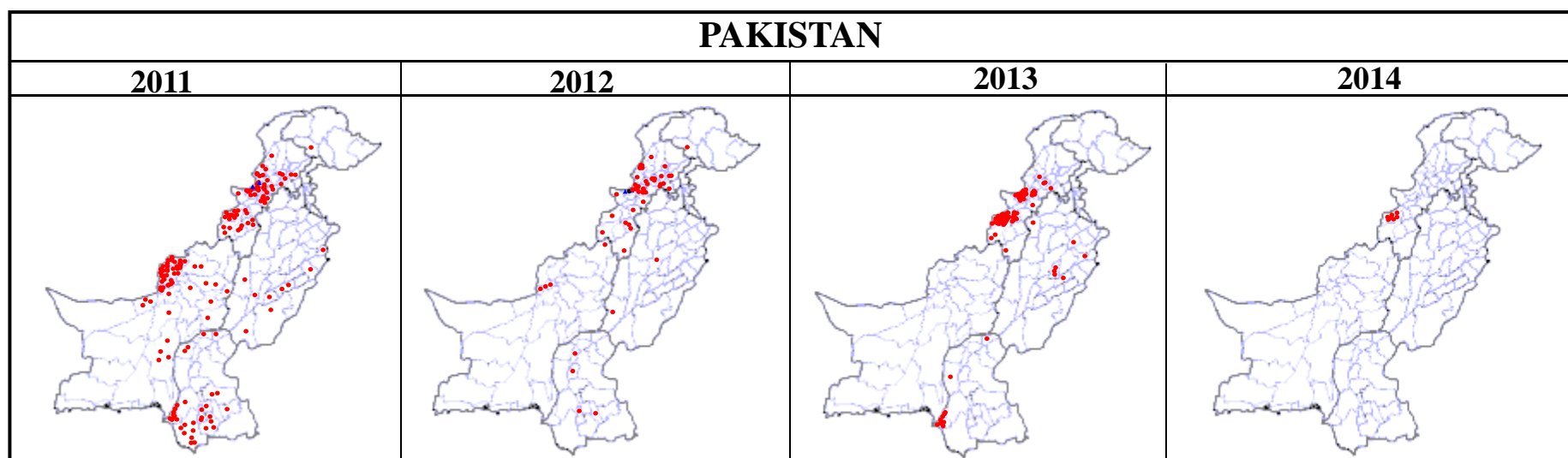


* Afp.rec Data as of 30-01-2014

Table 5: Polio Eradication Update, Pakistan 2011-2014*

Province/Region	Polio 1				Polio 3				Total Wild			
	2011	2012	2013	2014	2011	2012	2013	2014	2011	2012	2013	2014
PUNJAB	9	2	7	-	0	-	-	-	9	2	7	-
SINDH	33	4	10	-	0	-	-	-	33	4	10	-
KP	23	27	11	-	0	-	-	-	23	27	11	-
FATA^	57	17	65	7	2	2	-	-	59	20^	65	7
BALUCHISTAN	73	4	-	-	0	-	-	-	73	4	-	-
AJK	0	-	-	-	0	-	-	-	0	-	-	-
Gilgit-Baltistan	1	1	-	-	0	-	-	-	1	1	-	-
ISLAMABAD	0	-	-	-	0	-	-	-	0	-	-	-
PAKISTAN	196	55	93	7	2	2	-	-	198	58	93	7

^ FATA reported mixture of NSL1 & NSL3



* Afp.rec Data as of 30-01-2014

Table 6: Vaccination status of non polio AFP cases age 6-59 months 2010-2013*

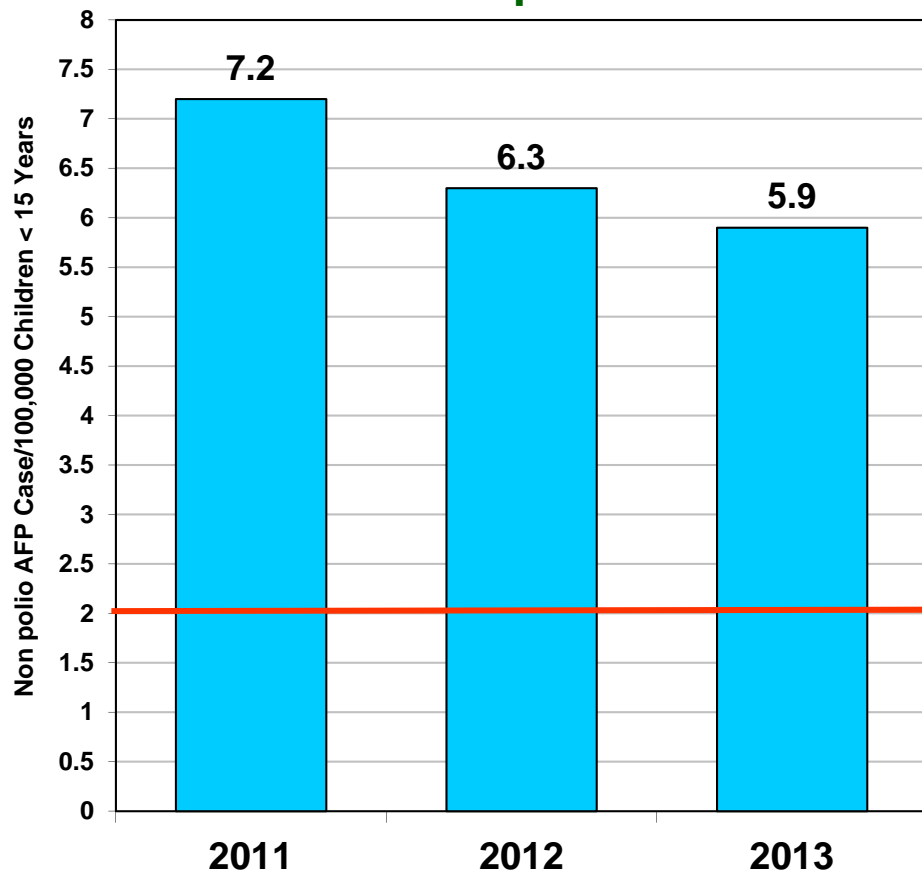
REGION	0 dose				1-2 doses				3 doses				4-6 doses				7+ doses			
	10	11	12	13	10	11	12	13	10	11	12	13	10	11	12	13	10	11	12	13
Central Punjab	0%	0%	0%	0%	1%	1%	0%	0%	1%	2%	0%	1%	7%	6%	4%	7%	91%	92%	95%	91%
North Punjab	0%	0%	0%	0%	0%	1%	0%	0%	2%	1%	0%	0%	6%	5%	4%	4%	91%	93%	96%	96%
South Punjab	0%	0%	0%	0%	1%	0%	0%	0%	0%	1%	0%	0%	5%	5%	4%	5%	94%	93%	96%	94%
PUNJAB	0%	0%	0%	0%	1%	1%	0%	0%	1%	1%	0%	0%	6%	5%	4%	6%	92%	93%	96%	93%
Karachi	2%	4%	1%	1%	0%	1%	1%	5%	3%	0%	2%	0%	7%	6%	6%	6%	88%	88%	90%	88%
North Sindh	0%	0%	0%	0%	1%	1%	0%	0%	0%	0%	1%	0%	4%	5%	4%	5%	95%	94%	94%	95%
South Sindh	0%	1%	0%	0%	1%	1%	1%	0%	1%	0%	2%	1%	9%	6%	4%	7%	89%	93%	93%	91%
SINDH	1%	1%	0%	0%	1%	1%	1%	1%	1%	0%	1%	0%	7%	6%	4%	6%	91%	92%	93%	92%
Central Khyber Pakhtunkhwa	1%	1%	2%	2%	0%	1%	1%	1%	1%	0%	0%	1%	2%	3%	2%	2%	97%	95%	95%	95%
North Khyber Pakhtunkhwa	2%	1%	2%	1%	1%	2%	2%	1%	2%	1%	2%	1%	6%	7%	9%	7%	89%	90%	85%	91%
South Khyber Pakhtunkhwa	3%	2%	2%	1%	3%	4%	1%	0%	3%	4%	1%	1%	14%	7%	9%	4%	76%	83%	87%	95%
Khyber Pakhtunkhwa	1%	1%	2%	1%	1%	2%	1%	0%	2%	1%	1%	1%	6%	5%	6%	4%	90%	91%	89%	94%
FATA	14%	14%	18%	39%	11%	10%	6%	6%	6%	5%	3%	6%	18%	11%	12%	6%	51%	61%	62%	43%
North Balochistan	12%	4%	12%	9%	0%	12%	10%	11%	4%	23%	3%	3%	12%	12%	17%	28%	72%	50%	57%	49%
Quetta Block	0%	31%	14%	8%	11%	10%	10%	8%	0%	3%	0%	0%	9%	14%	14%	21%	81%	43%	62%	64%
Rest of Balochistan	6%	7%	9%	5%	2%	2%	6%	3%	2%	5%	5%	5%	11%	10%	10%	25%	78%	76%	70%	60%
BALOCHISTAN	5%	16%	8%	6%	4%	6%	8%	6%	2%	6%	3%	4%	11%	12%	17%	20%	78%	60%	64%	64%
PAKISTAN	1%	2%	1%	3%	1%	1%	1%	1%	1%	1%	1%	1%	7%	6%	5%	6%	89%	89%	92%	89%

* Afp.rec Data as of 30-01-2014

Key Surveillance Indicators; 2011-2013*

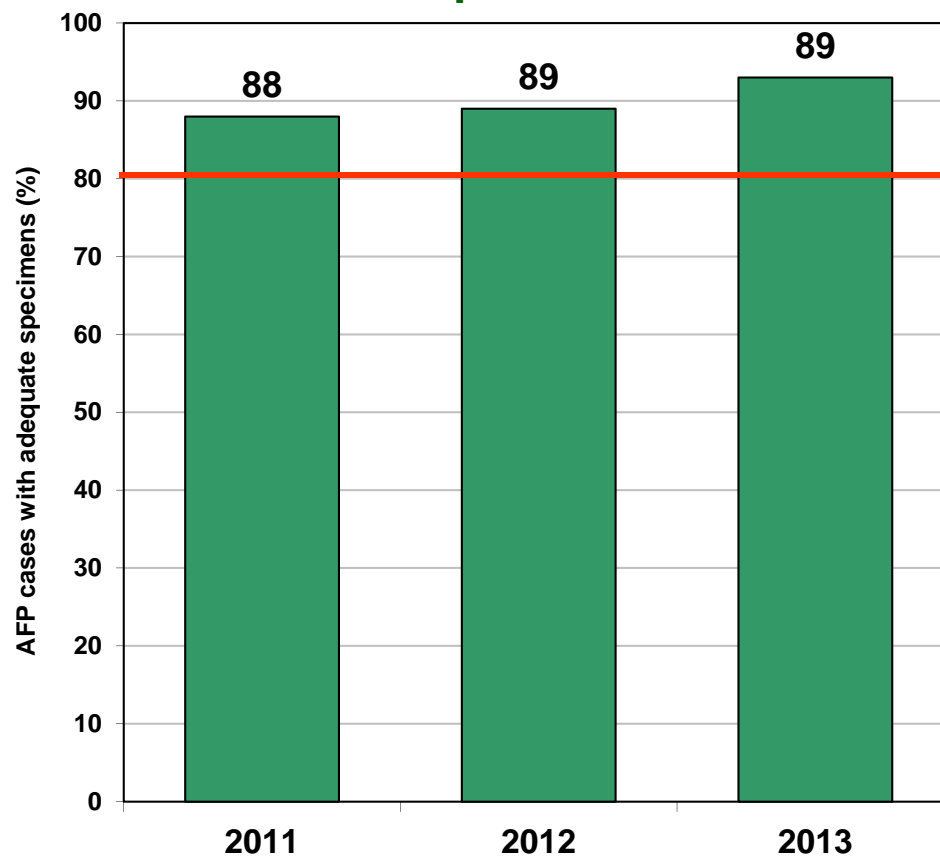
(Non polio AFP rate and % AFP cases with adequate specimens)

Graph 3



■ Non Polio AFP Rate

Graph 4



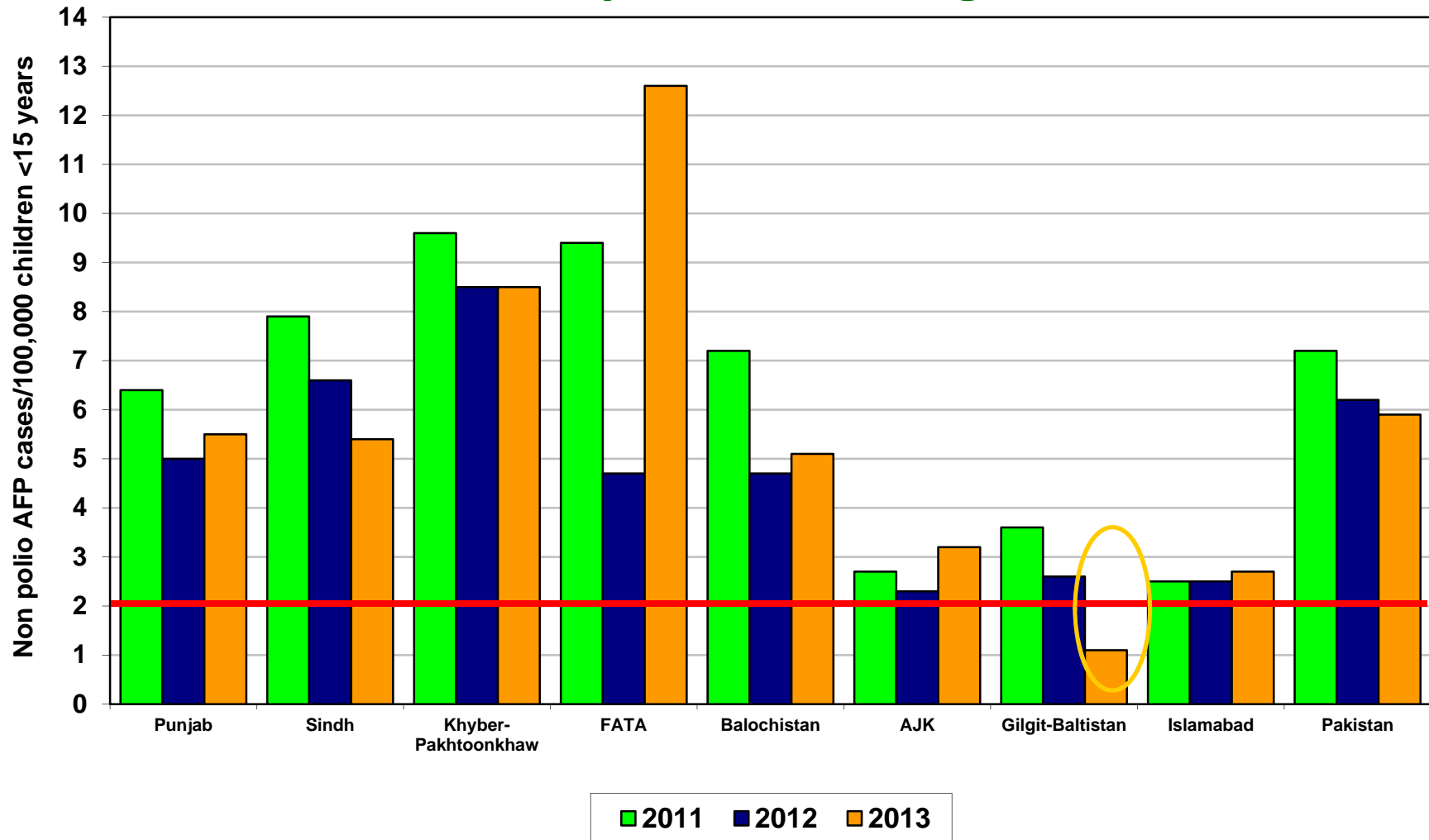
■ % AFP with Adequate Specimens

— Target

Non Polio AFP rate Up to Week No. 52 ended on 28th December, 2013

* Afp.rec Data as of 30-01-2014

Non Polio AFP Rate By Province/Regions, 2011-2013*

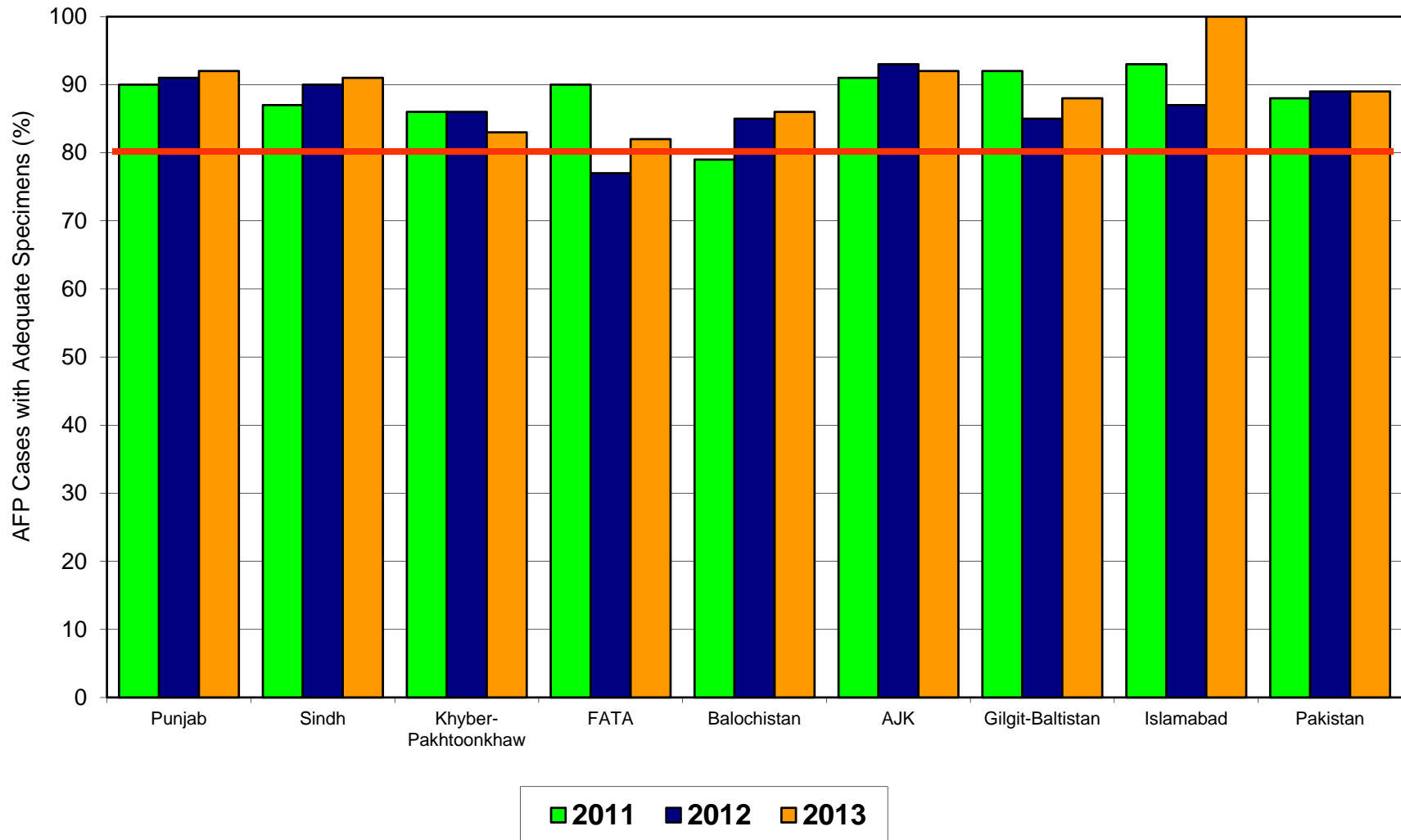


Non Polio AFP rate Up to Week No. 52 ended on 28th December, 2013

Target Non-Polio AFP Rate 2/ 100000 < 15 years of the age

* Afp.rec Data as of 30-01-2014

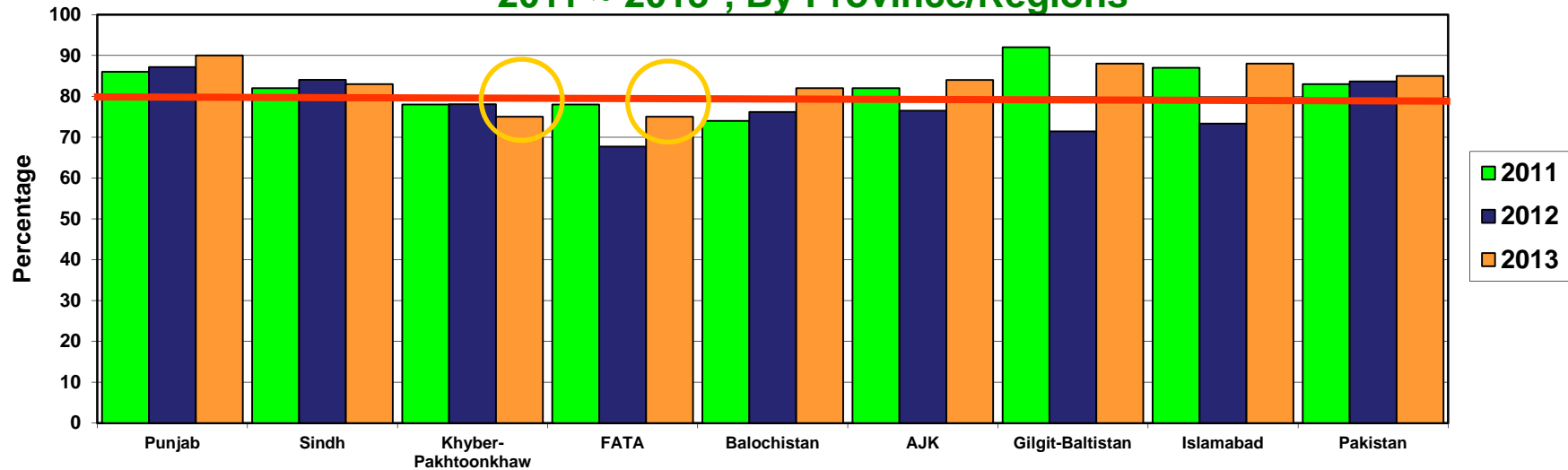
Percent AFP Cases with Adequate Specimens By Province/Regions, 2011-2013*



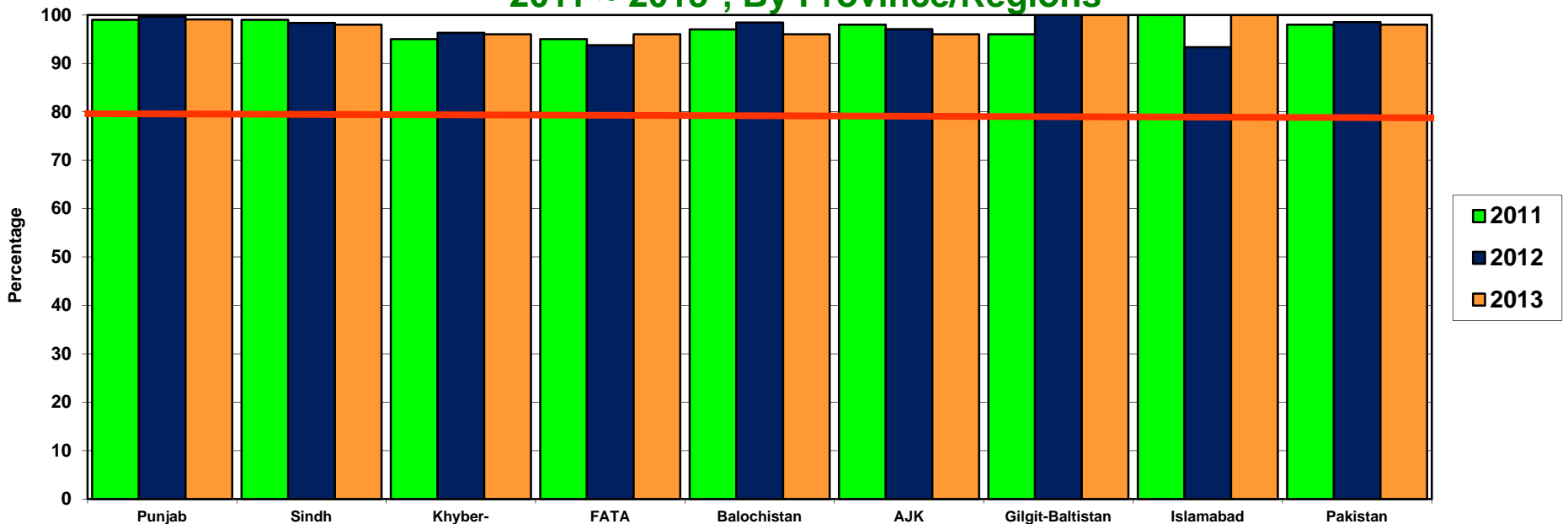
* Afp.rec Data as of 30-01-2014

 Target Adequate Sample cases = 80%

**Graph 5: Percent AFP Cases Notified within 07 days of paralysis onset
2011 ~ 2013*, By Province/Regions**



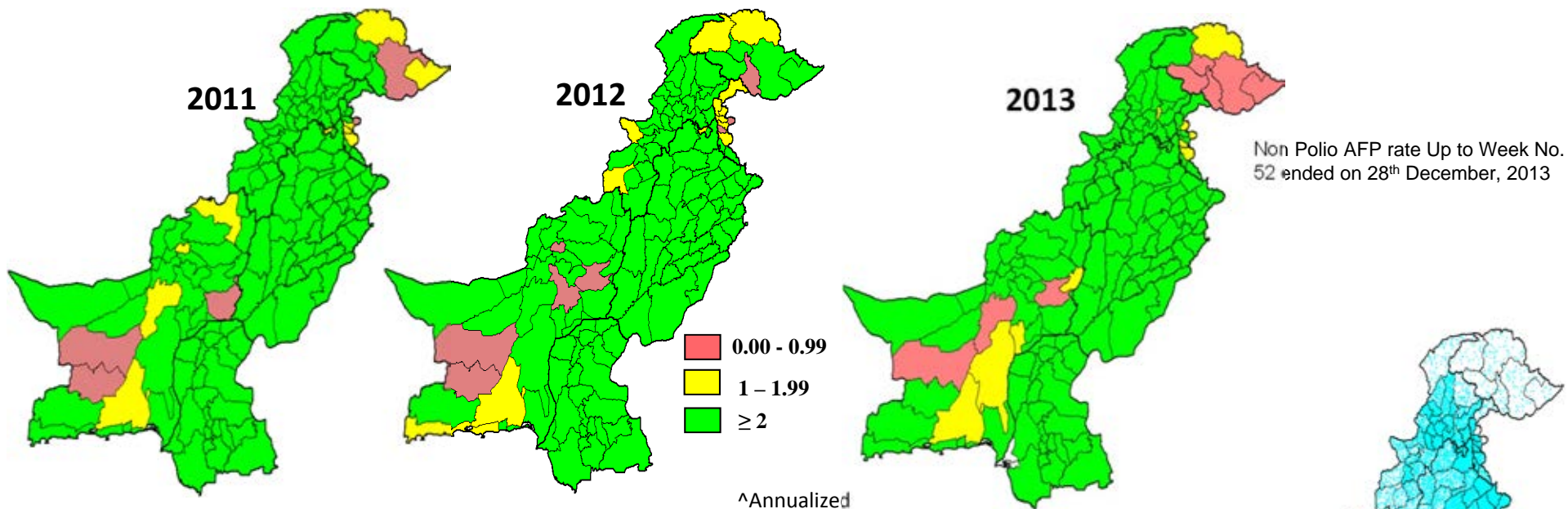
**Graph 6: Percent AFP Cases Investigated within 48 hours of notification
2011 ~ 2013*, By Province/Regions**



* Afp.rec Data as of 30-01-2014

— Target

Non-Polio[^] AFP Rate by District



Percent AFP Cases with Adequate Specimens, by District

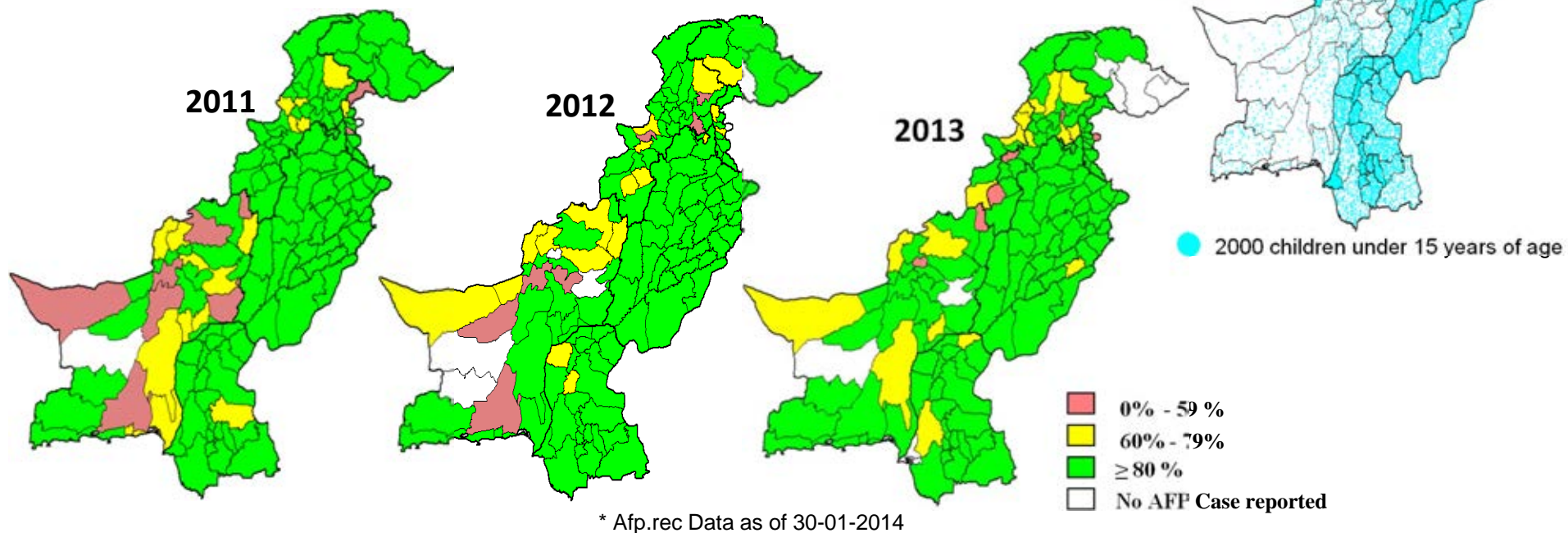


Table 7: AFP CASES PENDING FOR CLASSIFICATION WITH DATE OF ONSET MORE THAN 90 DAYS* 2013 (1/5)

S. No	DISTRICT	TEHSIL	EPID	SEX	AGE	DONSET	DOSE€	DSTOOL1	DSTOOL2	LAB	FEVER	ASYM	PROG	FUP	PEND (DAYS)
1	KARAK	KARAK	KP/51/13/005	F	13	01-01-13	7+	15-02-13	17-02-13	EV	N	Y	Y	Y	387
2	MARDAN	MARDAN	KP/40/13/007	M	29	17-01-13	7+	06-02-13	07-02-13	EV	Y	Y	Y	Y	371
3	PESHAWAR	PESHAWAR	KP/30/13/008	M	96	15-01-13	7+	26-02-13	27-02-13	NVI	N	N	Y	Y	373
4	SWAT	SWAT	KP/24/13/004	M	120	20-02-13	7+	Child Died Before Stool Collection			Y	N	Y	DIED	337
5	WAZIR-N	MIRAN SHAH	FT/64/13/001	M	96	08-02-13	6	13-02-13		NVI	Y	N	Y	DIED	349
6	FAISALABAD	TANDLIAN WALA	PB/51/13/049	F	18	22-05-13	7+	27-06-13	28-06-13	NVI	Y	Y	UK	Y	246
7	FAISALABAD	FAISALABAD CITY	PB/51/13/061	F	144	01-08-13	7+	Child Died Before Stool Collection			N	N	Y	DIED	175
8	FAISALABAD	FAISALABAD SADAR	PB/51/13/066	M	3	17-08-13	3	01-09-13	03-09-13	NVI	Y	Y	Y	DIED	159
9	FAISALABAD	FAISALABAD SADAR	PB/51/13/085	M	48	20-10-13	7+	07-11-13	09-11-13	NVI	Y	Y	Y	Y	95
10	FAISALABAD	FAISALABAD CITY	PB/51/13/086	F	120	01-08-13	7+	Late Notified			Y	Y	Y	Y	175
11	FAISALABAD	FAISALABAD SADAR	PB/51/13/098	M	124	12-10-13	7+				Y	Y	Y		103
12	FAISALABAD	TANDLIAN WALA	PB/51/13/103	M	24	15-10-13	7+				N	Y	UK	Y	100
13	GUJRANWALA	KHIALI SHAHPUR	PB/21/13/055	M	96	14-06-13	7+	03-07-13	05-07-13	NVI	Y	Y	Y	Y	223
14	GUJRANWALA	KAMOKE	PB/21/13/087	F	72	21-09-13	7+	07-10-13	08-10-13	NVI	Y	Y	Y	Y	124
15	GUJRANWALA	KAMOKE	PB/21/13/090	M	96	25-06-13	7+	Late Notified			N	Y	Y	Y	212
16	JHELUM	SOHAWA	PB/14/13/026	M	108	19-08-13	7+				N	N	Y	DIED	157
17	LAHORE	SHALAMAR TOWN	PB/31/13/095	F	108	17-09-13	7+	Child Died Before Stool Collection			Y	N	Y	DIED	128
18	LAHORE	NISHTAR TOWN	PB/31/13/097	F	24	10-08-13	7+	27-09-13	28-09-13	EV	N	Y	Y	Y	166
19	MUZFARGARH	MUZFARGARH	PB/83/13/096	M	14	17-08-13	7+	04-10-13	05-10-13	VACC	Y	Y	Y	Y	159
20	MUZFARGARH	ALIPUR	PB/83/13/098	M	4	25-08-13	3	08-10-13	09-10-13	EV	Y	Y	Y	Y	151
21	NANKANASAHIB	NANKANASAHIB	PB/35/13/027	F	50	07-08-13	7+	28-09-13	29-09-13	NVI	N	N	Y	Y	169
22	OKARA	DEPALPUR	PB/34/13/031	M	24	27-05-13	7+	07-07-13	08-07-13	EV	N	Y	Y	Y	241
23	RAWALPINDI	RAWALPINDI	PB/11/13/028	M	132	13-05-13	7+	03-06-13	05-06-13	NVI	N	N	Y	Y	255
24	RAWALPINDI	MURREE	PB/11/13/041	M	177	05-07-13	7+	23-07-13	24-07-13	NVI	N	N	Y	Y	202
25	RAWALPINDI	RAWALPINDI	PB/11/13/047	M	87	09-08-13	7+	Child Died Before Stool Collection			Y	N	Y	DIED	167
26	RAWALPINDI	TAXILA	PB/11/13/048	M	27	13-08-13	7+				N	N	Y	DIED	163
27	RAWALPINDI	RAWALPINDI	PB/11/13/050	F	102	15-08-13	7+	24-08-13		NVI	N	N	Y	DIED	161
28	RAWALPINDI	TAXILA	PB/11/13/058	M	121	22-08-13	7+	02-10-13	04-10-13	NVI	N	N	Y	Y	154
29	RAWALPINDI	GUJAR KHAN	PB/11/13/062	M	36	25-09-13	7+	18-10-13	20-10-13	NVI	Y	N	Y	Y	120
30	SAHIWAL	SAHIWAL	PB/65/13/024	M	120	12-06-13	7+	22-07-13	23-07-13	NVI	Y	Y	Y	Y	225
31	SAHIWAL	CHICHAWATNI	PB/65/13/025	F	6	25-06-13	5	30-07-13	01-08-13	NVI	Y	N	Y	Y	212
32	SAHIWAL	CHICHAWATNI	PB/65/13/044	M	4	22-09-13	3	23-10-13	24-10-13	VACC	Y	Y	Y	Y	123
33	SAHIWAL	SAHIWAL	PB/65/13/046	M	168	20-10-13	7+	Child Died Before Stool Collection			Y	N	Y	DIED	95
34	SHEIKUPURA	FEROZEWALA	PB/33/13/030	M	144	22-05-13	7+	14-06-13	15-06-13	NVI	N	Y	Y	Y	246
35	SHEIKUPURA	MURIDKE	PB/33/13/038	M	84	03-07-13	7+	11-07-13		NVI	Y	N	Y	DIED	204
36	TTSINGH	KAMALIA	PB/52/13/061	M	4	19-08-13	5	Late Notified			Y	Y	UK	Y	157
37	GHOTKI	KHANGARH	SD/42/13/052	M	72	21-07-13	7+	30-08-13	31-08-13	NVI	Y	N	Y	Y	186
38	HYDERABAD	HYDERABAD CITY	SD/21/13/024	M	84	28-09-13	7+	Child Died Before Stool Collection			N	N	Y	DIED	117
39	HYDERABAD	HYDERABAD RURAL	SD/21/13/033	F	43	17-10-13	7+	10-12-13	11-12-13	NVI	N	N	Y	Y	98
40	JACOBABAD	THUL	SD/53/13/013	M	156	16-05-13	7+	11-06-13	15-06-13	NVI	Y	Y	Y	Y	252
41	JACOBABAD	THUL	SD/53/13/017	M	10	26-06-13	7+	26-07-13	27-07-13	EV	Y	Y	Y	Y	211
42	JAMSHORO	T.B.KHAN	SD/25/13/009	F	18	03-05-13	7+	25-05-13	12-06-13	NVI	N	N	Y	Y	265
43	JAMSHORO	SEHWAN	SD/25/13/019	M	6	02-10-13	3	16-10-13	17-10-13	NVI	Y	Y	Y	LOST	113
44	KAMBAR	MIRO KHAN	SD/55/13/023	M	24	26-09-13	7+	29-10-13	30-10-13		N	Y	Y	Y	119

€ Based on recall of parents

* Afp.rec Data as of 30-01-2014

60 days Follow-up not done

FUP = Residual Weakness at 60 days follow up.

Table 7.1: AFP CASES PENDING FOR CLASSIFICATION WITH DATE OF ONSET MORE THAN 90 DAYS* 2013 (2/5)

S. No	DISTRICT	TEHSIL	EPID	SEX	AGE	DONSET	DOSE€	DSTOOL1	DSTOOL2	LAB	FEVER	ASYM	PROG	FUP	PEND (DAYS)
45	KAMBAR	MIRO KHAN	SD/55/13/023	M	24	26-09-13	7+	29-10-13	30-10-13		N	Y	Y	Y	126
46	KASHMORE	KANDHKOT	SD/54/13/002	M	54	27-05-13	7+	Late Notified			N	N	Y	LOST	248
47	KHAIRPUR	GAMBAT	SD/43/13/049	F	48	14-10-13	7+	05-11-13	09-11-13	NVI	Y	N	Y	DIED	108
48	KHIBALDIA	BALDIA	SD/61/13/005	F	36	18-06-13	4	Child Died Before Stool Collection			N	N	Y	DIED	226
49	KHIBALDIA	BALDIA	SD/61/13/010	M	16	10-10-13	7+	24-10-13	26-10-13	EV	Y	Y	Y		112
50	KHIBINQASIM	BINQASIM	SD/62/13/012	M	96	19-09-13	7+	17-11-13	18-11-13	NVI	Y	N	Y	Y	133
51	KHIGADAP	GADAP	SD/63/13/010	F	42	02-06-13	7+	Child Died Before Stool Collection			Y	N	Y	DIED	242
52	KHIGADAP	GADAP	SD/63/13/021	F	10	23-08-13	1	23-09-13	24-09-13	NVI	Y	Y	Y	Y	160
53	KHIGADAP	GADAP	SD/63/13/031	M	14	15-07-13	7+	Late Notified			Y	Y	Y	Y	199
54	KHIJAMSHEED	JAMSHEED	SD/66/13/004	F	60	01-05-13	7+	Child Died Before Stool Collection			Y	N	Y	DIED	274
55	KHIKAMARI	KAMARI	SD/67/13/005	M	108	25-06-13	7+	07-07-13	15-07-13	NVI	Y	Y	Y	Y	219
56	KHISADDAR	SADDAR	SD/77/13/004	F	38	05-04-13	7+	10-05-13	11-05-13	NVI	N	N	Y	Y	300
57	NFEROZ	BHIRIA	SD/45/13/003	F	144	05-02-13	7+	Child Died Before Stool Collection			Y	Y	Y	DIED	359
58	NFEROZ	MORO	SD/45/13/013	F	54	10-05-13	7+	01-06-13	02-06-13	NVI	N	Y	Y	Y	265
59	SANGHAR	KHIPRO	SD/32/13/024	F	60	15-09-13	7+	01-10-13	02-10-13	NVI	Y	Y	Y	Y	137
60	T.ALLAHYAR	TANDO ALLAHYAR	SD/27/13/009	M	4	28-05-13	4	24-06-13	25-06-13	NVI	Y	Y	Y	Y	247
61	T.ALLAHYAR	J.MUREE	SD/27/13/010	M	72	13-06-13	7+	Child Died Before Stool Collection			Y	Y	Y	DIED	231
62	T.ALLAHYAR	J.MUREE	SD/27/13/015	M	60	21-08-13	7+	03-09-13	05-09-13	NVI	N	Y	Y	Y	162
63	THARPARKAR	MITHI	SD/33/13/021	M	36	21-09-13	7+	14-10-13	15-10-13	NVI	Y	N	N	Y	131
64	THATTA	THATTA	SD/22/13/032	M	72	06-06-13	7+	15-07-13	16-07-13	NVI	Y	Y	Y	Y	238
65	UMERKOT	UMER KOT	SD/34/13/026	M	2	06-09-13	1	17-09-13		EV	Y	N	Y	DIED	146
66	ABOTABAD	HAVALIAN	KP/10/13/017	M	96	23-07-13	7+	14-08-13	15-08-13	NVI	Y	N	Y	Y	191
67	ABOTABAD	ABBOTABAD	KP/10/13/021	M	49	27-07-13	7+	16-08-13	17-08-13	EV	N	N	N		187
68	ABOTABAD	ABBOTABAD	KP/10/13/025	F	14	15-10-13	7+	03-11-13	04-11-13	NVI	N	N	Y		107
69	ABOTABAD	HAVALIAN	KP/10/13/027	F	72	18-08-13	7+	Late Notified			N	Y	Y	Y	165
70	ABOTABAD	ABBOTABAD	KP/10/13/029	F	144	18-10-13	0	08-11-13	15-11-13	NVI	Y	Y	Y	Y	104
71	BANNU	BANNU	KP/61/13/010	M	53	30-04-13	7+	Late Notified			Y	N	N	Y	275
72	BANNU	BANNU	KP/61/13/020	M	42	19-10-13	7+	15-11-13	17-11-13	EV	Y	N	Y		103
73	BUNIR	DAGGAR	KP/22/13/008	M	35	12-03-13	7+	01-04-13	02-04-13	NVI	Y	Y	Y	Y	324
74	BUNIR	DAGGAR	KP/22/13/007	M	132	28-02-13	7+	30-03-13	31-03-13	NVI	N	N	Y	Y	336
75	BUNIR	DAGGAR	KP/22/13/015	M	72	01-01-13	7+	Late Notified			Y	Y	Y	Y	394
76	BUNIR	DAGGAR	KP/22/13/044	M	16	09-08-13	0							Y	N
77	CHARSADA	CHARSADA	KP/31/13/049	F	72	10-08-13	7+	24-08-13	27-08-13	NVI	Y	Y	Y		173
78	CHARSADA	SHABQADAR	KP/31/13/052	F	39	27-08-13	7+	10-09-13	11-09-13	NVI	Y	Y	Y		156
79	CHARSADA	CHARSADA	KP/31/13/053	M	18	03-08-13	7+	03-09-13	04-09-13	NVI	Y	Y	Y		180
80	CHARSADA	CHARSADA	KP/31/13/072	F	30	25-10-13	7+	19-12-13	20-12-13	NVI	Y	Y	Y		97
81	DIKHAN	KULACHI	KP/60/13/013	F	18	22-04-13	5	16-06-13	17-06-13	VACC	N	Y	Y	Y	283
82	DIKHAN	DIKHAN	KP/60/13/014	M	54	17-06-13	7+	20-06-13		NVI	Y	Y	Y	DIED	227
83	DIRLOWER	SAMAR BAGH	KP/23/13/015	F	13	30-01-13	7+	Late Notified			Y	Y	Y	Y	365
84	DIRLOWER	SAMAR BAGH	KP/23/13/033	F	96	25-07-13	7+	05-09-13	07-09-13	NVI	Y	Y	Y	Y	189
85	DIRLOWER	TIMERGARA	KP/23/13/034	M	30	08-08-13	7+	16-09-13	17-09-13	NVI	Y	Y	Y	Y	175
86	DIRLOWER	TIMERGARA	KP/23/13/038	M	1	10-10-13	1	15-11-13	16-11-13	NVI	Y	Y	Y	Y	112
87	DIRUPPER	DIR	KP/25/13/006	F	21	25-07-13	7+	08-08-13	10-08-13	EV	UK	Y	Y	Y	189
88	HANGU	HANGU	KP/54/13/005	M	12	21-06-13	7+	08-07-13	09-07-13	EV	Y	Y	Y		223

€ Based on recall of parents

* Afp.rec Data as of 30-01-2014

60 days Follow-up not done

FUP = Residual Weakness at 60 days follow up.

Table 7.2: AFP CASES PENDING FOR CLASSIFICATION WITH DATE OF ONSET MORE THAN 90 DAYS* 2013 (3/5)

S. No	DISTRICT	TEHSIL	EPID	SEX	AGE	DONSET	DOSE€	DSTOOL1	DSTOOL2	LAB	FEVER	ASYM	PROG	FUP	PEND (DAYS)
89	HANGU	HANGU	KP/54/13/004	F	30	05-06-13	7+	05-07-13	06-07-13	EV	Y	N	Y	Y	239
90	HANGU	HANGU	KP/54/13/008	M	36	03-07-13	7+	24-07-13		EV	Y	N	Y		211
91	HANGU	HANGU	KP/54/13/012	F	24	29-08-13	7+	16-09-13	18-09-13		Y	Y	N		154
92	HANGU	HANGU	KP/54/13/014	F	8	28-10-13	7+	26-11-13	28-11-13	NVI	Y	N	Y		94
93	HARIPUR	HARIPUR	KP/12/13/005	M	66	18-01-13	7+	19-02-13	20-02-13	EV	N	N	Y	Y	377
94	HARIPUR	HARIPUR	KP/12/13/012	F	20	18-04-13	7+	19-05-13	20-05-13	EV	Y	Y	Y	Y	287
95	HARIPUR	HARIPUR	KP/12/13/019	F	20	28-06-13	7+	18-08-13	19-08-13		Y	Y	Y		216
96	HARIPUR	HARIPUR	KP/12/13/024	F	48	06-10-13	7+	29-10-13	30-10-13	NVI	Y	N	Y		116
97	KARAK	TAKHT E NASRATI	KP/51/13/017	M	21	09-09-13	7+	24-09-13	26-09-13	NVI	Y	Y	Y	Y	143
98	KOHAT	LACHI	KP/50/13/012	M	96	28-05-13	7+	26-06-13	27-06-13	NVI	N	N	Y	Y	247
99	KOHAT	LACHI	KP/50/13/015	M	21	15-05-13	7+	Late Notified			Y	Y	Y	Y	260
100	LAKKIMRWT	LAKKIMRWT	KP/62/13/018	M	26	22-05-13	7+	21-06-13	22-06-13		N	Y	Y	Y	253
101	LAKKIMRWT	LAKKIMRWT	KP/62/13/030	F	28	11-09-13	7+	01-10-13	03-10-13	NVI	N	N	Y	Y	141
102	LAKKIMRWT	LAKKIMRWT	KP/62/13/038	F	96	05-10-13	3	26-10-13	27-10-13	NVI	Y	Y	Y	Y	117
103	MANSEHRA	MANSEHRA	KP/14/13/005	M	168	17-03-13	7+	Child Died Before Stool Collection			N	N	Y	DIED	319
104	MANSEHRA	MANSEHRA	KP/14/13/010	F	9	01-06-13	6	17-06-13	19-06-13	NVI	Y	N	Y	DIED	243
105	MANSEHRA	MANSEHRA	KP/14/13/019	F	24	13-07-13	7+	Child Died Before Stool Collection			UK	UK	Y	DIED	201
106	MANSEHRA	MANSEHRA	KP/14/13/026	M	84	31-08-13	7+	16-09-13	17-09-13	NVI	Y	N	Y	DIED	152
107	MARDAN	TAKHT BHAI	KP/40/13/034	M	5	10-03-13	6	Late Notified			N	Y	UK	Y	326
108	MARDAN	MARDAN	KP/40/13/059	F	24	25-07-13	7+	21-08-13	22-08-13	NVI	Y	Y	Y	Y	189
109	MARDAN	MARDAN	KP/40/13/063	M	108	15-08-13	7+	29-08-13	31-08-13	NVI	Y	Y	Y	Y	168
110	MARDAN	MARDAN	KP/40/13/046	F	24	15-06-13	7+	05-07-13	06-07-13	EV	Y	Y	Y	Y	229
111	MARDAN	MARDAN	KP/40/13/074	F	24	02-08-13	7+	11-09-13	13-09-13	NVI	N	Y	Y	Y	181
112	MARDAN	MARDAN	KP/40/13/077	F	32	02-09-13	7+	24-09-13	25-09-13	NVI	Y	Y	Y	Y	150
113	MARDAN	MARDAN	KP/40/13/073	M	23	15-06-13	7+	Late Notified			UK	Y	UK	Y	229
114	MARDAN	MARDAN	KP/40/13/095	F	60	13-10-13	7+	16-11-13	17-11-13	NVI	N	N	Y	Y	109
115	NOWSHERA	NOWSHERA	KP/32/13/012	F	108	15-03-13	7+	Child Died Before Stool Collection			Y	N	Y	DIED	321
116	NOWSHERA	NOWSHERA	KP/32/13/029	M	14	28-07-13	7+	17-08-13	18-08-13	EV	Y	Y	Y		186
117	NOWSHERA	NOWSHERA	KP/32/13/036	F	30	03-08-13	7+	25-09-13	26-09-13	NVI	Y	Y	Y		180
118	NOWSHERA	NOWSHERA	KP/32/13/031	M	25	25-07-13	7+	21-08-13	22-08-13	EV	Y	Y	Y		189
119	NOWSHERA	NOWSHERA	KP/32/13/041	M	27	26-10-13	7+	14-11-13	15-11-13	EV	Y	Y	Y		96
120	PESHAWAR	PESHAWAR	KP/30/13/022	F	22	06-02-13	7+	Late Notified			N	N	N	Y	358
121	PESHAWAR	PESHAWAR	KP/30/13/026	M	24	17-04-13	0	17-05-13	19-05-13	EV	Y	Y	Y	Y	288
122	PESHAWAR	PESHAWAR	KP/30/13/039	F	54	03-05-13	7+	14-06-13	15-06-13	EV	Y	Y	Y	Y	272
123	PESHAWAR	PESHAWAR	KP/30/13/043	F	66	16-06-13	7+	07-07-13	08-07-13	NVI	Y	Y	Y	Y	228
124	PESHAWAR	PESHAWAR	KP/30/13/052	M	36	13-07-13	7+	27-07-13	28-07-13	EV	N	Y	Y	Y	201
125	PESHAWAR	PESHAWAR	KP/30/13/063	M	14	16-08-13	7+	30-08-13	01-09-13	VACC	Y	N	Y	LOST	167
126	PESHAWAR	PESHAWAR	KP/30/13/069	M	84	29-08-13	7+	13-09-13	14-09-13	NVI	Y	Y	Y	DIED	154
127	PESHAWAR	PESHAWAR	KP/30/13/057	F	21	14-07-13	7+	16-08-13	17-08-13	EV	Y	Y	Y	Y	200
128	PESHAWAR	PESHAWAR	KP/30/13/076	F	24	28-08-13	7+	02-10-13	10-10-13	NVI	Y	N	UK	Y	155
129	PESHAWAR	PESHAWAR	KP/30/13/097	F	9	02-10-13	0	19-11-13	20-11-13	EV	Y	Y	Y		120
130	PESHAWAR	PESHAWAR	KP/30/13/094	F	96	11-10-13	7+	17-11-13	19-11-13	NVI	Y	Y	Y	Y	111
131	PESHAWAR	PESHAWAR	KP/30/13/096	M	7	08-10-13	3	18-11-13	19-11-13	NVI	Y	Y	Y	Y	114
132	PESHAWAR	PESHAWAR	KP/30/13/056	F	24	14-07-13	7+	06-08-13	07-08-13	NVI	N	N	Y	Y	200

€ Based on recall of parents

* Afp.rec Data as of 30-01-2014

60 days Follow-up not done

FUP = Residual Weakness at 60 days follow up.

Table 7.3: AFP CASES PENDING FOR CLASSIFICATION WITH DATE OF ONSET MORE THAN 90 DAYS* 2013 (4/5)

S. No	DISTRICT	TEHSIL	EPID	SEX	AGE	DONSET	DOSESE€	DSTOOL1	DSTOOL2	LAB	FEVER	ASYM	PROG	FUP	PEND (DAYS)
133	PESHAWAR	PESHAWAR	KP/30/13/059	M	86	13-06-13	7+	Late Notified			Y	Y	Y	Y	231
134	PESHAWAR	PESHAWAR	KP/30/13/106	M	25	05-10-13	7+	29-11-13	30-11-13	EV	N	Y	Y		117
135	PESHAWAR	PESHAWAR	KP/30/13/095	F	23	25-10-13	7+	14-11-13	16-11-13	NVI	N	N	Y	DIED	97
136	PESHAWAR	PESHAWAR	KP/30/13/114	M	14	15-10-13	7+	Late Notified			N	Y	Y	Y	107
137	SHANGLA	MARTOONG	KP/26/13/001	M	72	08-01-13	7+	Late Notified			Y	Y	Y	LOST	387
138	SHANGLA	CHAKISAR	KP/26/13/008	F	36	01-06-13	7+	27-06-13	31-07-13	NVI	Y	Y	Y	Y	243
139	SWABI	SWABI	KP/41/13/035	M	36	15-09-13	7+	Late Notified			Y	Y	Y		137
140	SWABI	LAHORE	KP/41/13/048	M	17	23-10-13	7+	24-11-13	25-11-13	EV	N	Y	Y		99
141	SWAT	SWAT	KP/24/13/006	F	132	02-04-13	7+	10-04-13		NVI	N	N	Y	DIED	303
142	SWAT	SWAT	KP/24/13/009	M	16	19-04-13	7+	14-05-13	15-05-13	NVI	Y	N	N	Y	286
143	SWAT	SWAT	KP/24/13/024	M	6	24-10-13	5	07-11-13	08-11-13	NVI	N	Y	UK		98
144	TANK	TANK	KP/63/13/005	M	42	25-02-13	7+	27-04-13	28-04-13	NVI	Y	N	UK	Y	339
145	TANK	TANK	KP/63/13/009	M	13	02-08-13	7+	06-09-13	07-09-13	NVI	N	N	Y	Y	181
146	TANK	TANK	KP/63/13/010	M	24	11-08-13	7+	24-09-13	25-09-13	NVI	Y	Y	Y	Y	172
147	JAFARABAD	SOHBAT PUR	BN/43/13/015	F	30	18-07-13	7+	30-08-13	31-08-13	EV	Y	Y	Y	Y	196
148	KHUZDAR	NAAL	BN/54/13/002	M	82	23-08-13	4	05-09-13	07-09-13	NVI	Y	N	Y		160
149	NSIRABAD	DMJAMALI	BN/41/13/010	M	18	08-09-13	7+	Child Died Before Stool Collection			Y	N	Y	DIED	144
150	ZIARAT	ZIARAT	BN/32/13/003	M	13	16-09-13	3	08-10-13	09-10-13	NVI	Y	Y	Y		136
151	GHIZER	PUNIAL	GB/41/13/001	M	66	02-09-13	7+	06-09-13		EV	N	Y	Y	DIED	150
152	BAJOUR	MAMUND	FT/33/13/007	M	45	02-01-13	7+	Late Notified			N	Y	Y	Y	393
153	BAJOUR	KHAR	FT/33/13/018	M	22	08-07-13	7+	23-08-13	24-08-13	NVI	Y	Y	Y		206
154	BAJOUR	MAMUND	FT/33/13/017	F	44	09-07-13	7+	13-08-13	14-08-13	EV	Y	N	N		205
155	BAJOUR	KHAR	FT/33/13/020	F	12	07-08-13	7+	07-09-13	08-09-13	EV	Y	Y	N		176
156	BAJOUR	MAMUND	FT/33/13/022	M	17	28-07-13	7+	12-09-13	13-09-13	NVI	N	Y	N		186
157	BAJOUR	KHAR	FT/33/13/023	F	48	15-08-13	7+	15-09-13	16-09-13	EV	N	N	Y		168
158	BAJOUR	KHAR	FT/33/13/024	M	36	18-08-13	7+	16-09-13	17-09-13	NVI	Y	Y	Y		165
159	BAJOUR	MAMUND	FT/33/13/032	M	18	04-09-13	7+	05-10-13	06-10-13	VACC	Y	Y	N		148
160	BAJOUR	NAWAGAI	FT/33/13/040	F	48	30-09-13	7+	25-11-13	26-11-13	VACC	Y	Y	N		122
161	FR BANNU	FR BANNU	FT/69/13/007	M	22	30-07-13	3	28-08-13	29-08-13	EV	Y	Y	Y		184
162	FR BANNU	FR BANNU	FT/69/13/012	M	9	10-08-13	0	22-09-13	23-09-13	EV	Y	Y	Y		173
163	FR BANNU	FR BANNU	FT/69/13/021	M	12	28-09-13	0	30-10-13	31-10-13	NVI	Y	Y	Y		124
164	KHYBER	JAMRUD	FT/34/13/002	F	24	18-01-13	7+	21-02-13	23-02-13	NVI	N	Y	Y	Y	377
165	KHYBER	JAMRUD	FT/34/13/017	M	14	08-06-13	0	16-06-13		NVI	Y	Y	Y	Y	236
166	KHYBER	BARA	FT/34/13/016	F	10	06-06-13	0	21-06-13	23-06-13	NVI	Y	Y	Y		238
167	KHYBER	BARA	FT/34/13/018	M	12	11-06-13	0	01-07-13	02-07-13	EV	Y	Y	Y		233
168	KHYBER	BARA	FT/34/13/021	F	18	13-07-13	0	25-07-13	29-07-13	NVI	N	N	Y		201
169	KHYBER	BARA	FT/34/13/037	M	13	26-09-13	0	11-10-13	12-10-13	NVI	Y	Y	Y		126
170	KHYBER	LANDI KOTAL	FT/34/13/039	M	18	09-10-13	7+	Late Notified			Y	N	Y		113
171	KHYBER	BARA	FT/34/13/043	F	36	17-10-13	1	08-11-13	09-11-13	EV	Y	Y	Y		105
172	KHYBER	LANDI KOTAL	FT/34/13/044	M	44	30-06-13	7+	Late Notified			Y	Y	Y	Y	214
173	KHYBER	LANDI KOTAL	FT/34/13/048	M	12	25-09-13	7+	Late Notified			Y	Y	Y	Y	127
174	KHYBER	LANDI KOTAL	FT/34/13/049	M	11	25-10-13	3	11-12-13	12-12-13		N	N	Y		97
175	MOHMAND	UPPER MOHMAND	FT/35/13/003	F	18	18-04-13	7+	07-05-13	08-05-13	NVI	Y	Y	Y	Y	287
176	MOHMAND	UPPER MOHMAND	FT/35/13/008	M	26	08-05-13	7+	22-06-13	23-06-13		Y	Y	Y		267

€ Based on recall of parents

* Afp.rec Data as of 30-01-2014

60 days Follow-up not done

FUP = Residual Weakness at 60 days follow up.

Table 7.3: AFP CASES PENDING FOR CLASSIFICATION WITH DATE OF ONSET MORE THAN 90 DAYS* 2013 (5/5)

S. No	DISTRICT	TEHSIL	EPID	SEX	AGE	DONSET	DOSES€	DSTOOL1	DSTOOL2	LAB	FEVER	ASYM	PROG	FUP	PEND (DAYS)	
177	WAZIR-N	MIRAN SHAH	FT/64/13/007	M	48	25-04-13	5	10-05-13	12-05-13	NVI	Y	N	Y	Y	280	
178	WAZIR-N	MIR ALI	FT/64/13/030	F	9	09-08-13	0	Late Notified			Y	N	N		174	
179	WAZIR-N	MIR ALI	FT/64/13/042	M	7	03-07-13	0	29-08-13	30-08-13	EV	Y	N	Y		211	
180	WAZIR-N	MIR ALI	FT/64/13/054	F	18	09-09-13	2	Late Notified			Y	N	Y		143	
181	WAZIR-N	MIR ALI	FT/64/13/090	M	12	20-09-13	0	24-10-13	25-10-13	VACC	Y	Y	Y		132	
182	WAZIR-N	MIR ALI	FT/64/13/101	F	10	20-10-13	0	07-11-13	09-11-13	NVI	Y	Y	Y		102	
183	WAZIR-N	RAZMAK	FT/64/13/111	F	24	22-10-13	3	24-11-13	25-11-13	NVI	Y	N	Y		100	
184	WAZIR-N	MIRAN SHAH	FT/64/13/122	F	13	15-09-13	0	Late Notified			Y	Y	Y	Y	137	
185	WAZIR-N	MIRAN SHAH	FT/64/13/121	M	13	25-08-13	0				N	Y	Y	Y	Y	158
186	WAZIR-N	MIRAN SHAH	FT/64/13/123	M	12	05-10-13	0				Y	Y	Y	Y	Y	117
187	WAZIR-S	WANA	FT/65/13/006	F	26	13-07-13	7+				15-08-13	16-08-13	NVI	Y	Y	Y
188	WAZIR-S	LADHA	FT/65/13/012	F	36	01-10-13	1	21-10-13	22-10-13	EV	Y	Y	Y		121	
189	WAZIR-S	WANA	FT/65/13/005	F	12	25-04-13	1	19-06-13	20-06-13	NVI	UK	N	UK		280	
190	WAZIR-S	WANA	FT/65/13/010	F	23	21-09-13	5	27-09-13		NVI	Y	N	UK		131	

€ Based on recall of parents
* Afp.rec Data as of 30-01-2014

60 days Follow-up not done

FUP = Residual Weakness at 60 days follow up.