



**World Health
Organization**

Weekly AFP Surveillance Update Pakistan

Week 51 (*Ended on 21st December, 2013*)

AFP Surveillance



National Surveillance Cell Federal EPI

World Health Organization Country Office,
Chak Shahzad, Park Road,
Islamabad, Pakistan

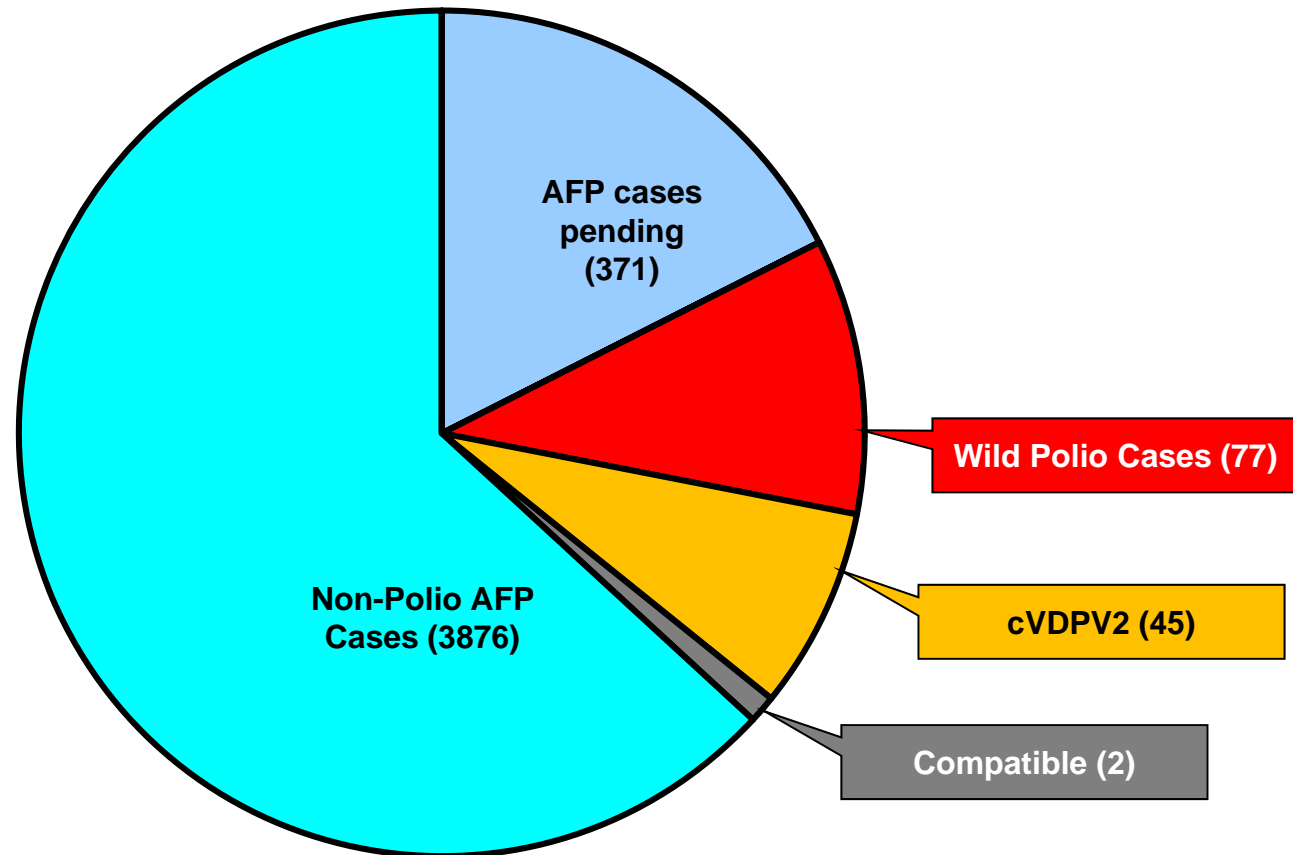
Tel: +92-51 9255123 / 9255282 /9255184

Fax: +92-51 9255274

Email: epidata@pak.emro.who.int

Web site: www.whopak.org

AFP Case Profile, 2013*



Total AFP Cases Reported = 4371

**^167 Inadequate cases pending classification by ERC;
^105 Inadequate cases not due for FUP
^99 Pending in the Lab**

Point in Time Comparison of polio cases by province/region 2012[§] & 2013*

Region/ Province	No. of polio cases		No. of infected districts/towns		Last polio case
	2012	2013	2012	2013	
Khyber Pakhtunkhwa	27	10	13	6	26-Oct-13
FATA / FR Areas	20	54	6	4	01-Dec-13
Sindh	4	7	4	5	09-Nov-13
Balochistan	4	-	2	-	02-Oct-12
Punjab	2	6	2	5	21-Oct-13
Gilgit-Baltistan	1	-	1	-	06-Aug-12
Pakistan	58	77	28	20	01-Dec-13

Seven additional districts/town declared infected based on environmental samples in 2013

Total polio cases of 2012 are 58

* Afp.rec Data as of 19-12-2013

§Based on date of onset

Table 1: List of Confirmed Polio Cases, Pakistan 2013* (1/4)

S.NO.	PROVINCE/ REGION	DISTRICT	TEHSIL	EPID NO.	SEX	AGE (m)	DATE ONSET OF PARALYSIS	NO. OPV DOSES (based on parents recall)		FEVER	Asymmetric Paralysis	Rapid Progression	REFUSAL	WPV TYPE	GENETICS
								Route	SIAs						Cluster
1	SINDH	BIN QASIM	BIN QASIM	SD/62/13/001	M	24	14-Jan-13	0	0	N	Y	Y	Y	NSL1	R4B
2	KP	BANNU	BANNU	NW/61/13/002	M	13	26-Jan-13	0	0	Y	N	Y	Y	NSL1	R4B
3	PUNJAB	MIWANWALI	ISAKHEL	PB/43/13/005	F	36	07-Feb-13	3	7+	Y	N	Y	N	NSL1	R4B
4	KP	MALAKAND	DARGAI	NW/20/13/006	F	3	08-Feb-13	2	2	Y	N	Y	N	NSL1	R4B
5	KP	MARDAN	MARDAN	NW/40/13/009	M	30	12-Feb-13	3	7+	Y	N	Y	N	NSL1	R4B
6	SINDH	DADU	MEHAR	SD/24/13/006	F	15	22-Mar-13	0	2	Y	N	Y	N	NSL1	R2B
7	KP	MARDAN	MARDAN	NW/40/13/026	M	8	22-Apr-13	0	0	Y	Y	Y	Y	NSL1	R4B
8	FATA	KHYBER\$	BARA	FT/34/13/008	M	10	24-Apr-13	2	4	Y	Y	N	N	NSL1	R4B
9	FATA	FR BANNU	FR BANNU	FT/69/13/001	M	16	03-May-13	0	3	Y	Y	Y	Y	NSL1	R4B
10	FATA	KHYBER\$	BARA	FT/34/13/010	M	8	10-May-13	0	0	Y	Y	Y	N	NSL1	R4B
11	FATA	KHYBER\$	BARA	FT/34/13/013	M	24	11-May-13	2	3	Y	N	Y	N	NSL1	R4B
12	FATA	KHYBER\$	BARA	FT/34/13/011	M	23	14-May-13	0	2	Y	Y	Y	N	NSL1	R4B
13	FATA	KHYBER\$	BARA	FT/34/13/012	M	4	16-May-13	0	0	Y	N	Y	N	NSL1	R4B
14	FATA	FR BANNU	FR BANNU	FT/69/13/002	F	22	19-May-13	0	7+	Y	N	Y	N	NSL1	R4B
15	FATA	KHYBER\$	BARA	FT/34/13/014	M	30	20-May-13	0	0	Y	N	Y	N	NSL1	R4A
16	FATA	WAZIR-N\$	MIR ALI	FT/64/13/010	M	9	24-May-13	0	0	Y	Y	Y	N	NSL1	R4B
17	PUNJAB	MBDIN	MALIKWAL	PB/24/13/013	F	96	26-May-13	3	7+	Y	Y	Y	N	NSL1	R4B
18	FATA	KHYBER\$	BARA	FT/34/13/015	M	15	06-June-13	0	0	Y	Y	Y	N	NSL1	R4B
19	FATA	WAZIR-N\$	MIR ALI	FT/64/13/014	F	11	15-June-13	0	0	Y	Y	Y	N	NSL1	R4B
20	FATA	KHYBER\$	BARA	FT/34/13/019	F	12	23-June-13	0	0	Y	N	Y	N	NSL1	R4B
21	KP	PESHAWAR	PESHAWAR	KP/30/13/042	M	12	30-June-13	0	0	Y	N	Y	Y	NSL1	R4B
22	FATA	KHYBER\$	BARA	FT/34/13/020	F	12	03-July-13	0	0	N	N	Y	N	NSL1	R4B

\$ Security compromised area

* Afp.rec Data as of 19-12-2013

Table 1.1: List of Confirmed Polio Cases, Pakistan 2013* (2/4)

S.NO.	PROVINCE/ REGION	DISTRICT	TEHSIL	EPID NO.	SEX	AGE (m)	DATE ONSET OF PARALYSIS	NO. OPV DOSES (based on parents recall)		FEVER	Asymmetric Paralysis	Rapid Progression	REFUSAL	W/PV TYPE	GENETICS
								Route	SIA's						Cluster
23	SINDH	KHIGADDAP	GADDAP	SD/63/13/015	F	12	09-July-13	3	6	Y	Y	Y	N	NSL1	R4B
24	FATA	WAZIR-N\$	MIRAN SHAH	FT/64/13/018	F	18	13-July-13	0	0	Y	Y	Y	N	NSL1	R4B
25	FATA	FR BANNU	FR BANNU	FT/69/13/006	M	18	27-July-13	0	7+^	Y	N	Y	N	NSL1	R4B
26	FATA	WAZIR-N\$	MIR ALI	FT/64/13/032	F	21	05-Aug-13	0	0	Y	Y	Y	N	NSL1	R4B
27	FATA	WAZIR-N\$	RAZMAK	FT/64/13/033	M	11	11-Aug-13	0	0	Y	Y	Y	N	NSL1	R4B
28	KP	KOHAT	KOHAT	KP/50/13/017	F	10	19-Aug-13	0	5	Y	Y	Y	N	NSL1	R4B
29	FATA	WAZIR-N\$	RAZMAK	FT/64/13/044	M	8	24-Aug-13	0	0	Y	N	Y	N	NSL1	R4B
30	FATA	FR DIKHAN	FR DIKHAN	FT/68/13/001	M	36	26-Aug-13	1	1	Y	N	Y	N	NSL1	R4B
31	FATA	KHYBER\$	BARA	FT/34/13/027	F	13	30-Aug-13	0	2	Y	Y	Y	N	NSL1	R4A
32	FATA	KHYBER\$	LANDI KOTAL	FT/34/13/028	M	18	30-Aug-13	0	0	Y	Y	Y	N	NSL1	R4A
33	KP	PESHAWAR	PESHAWAR	KP/30/13/068	M	6	31-Aug-13	0	0	Y	Y	Y	N	NSL1	R4B
34	FATA	WAZIR-N\$	MIR ALI	FT/64/13/050	F	13	01-Sep-13	0	0	Y	Y	Y	N	NSL1	R4B
35	FATA	WAZIR-N\$	MIRAN SHAH	FT/64/13/051	F	11	05-Sep-13	0	0	Y	Y	Y	N	NSL1	R4B
36	FATA	KHYBER\$	LANDI KOTAL	FT/34/13/032	F	8	05-Sep-13	0	4	Y	Y	Y	N	NSL1	R4A
37	FATA	WAZIR-N\$	RAZMAK	FT/64/13/053	F	17	06-Sep-13	0	0	Y	Y	Y	N	NSL1	R4B
38	FATA	WAZIR-N\$	MIR ALI	FT/64/13/055	F	7	08-Sep-13	1	0	Y	Y	Y	N	NSL1	R4B
39	KP	SWABI	SWABI	KP/41/13/037	F	2	10-Sep-13	0	0	Y	Y	Y	N	NSL1	R4B
40	FATA	KHYBER\$	BARA	FT/34/13/029	M	11	10-Sep-13	3	7+	Y	Y	Y	N	NSL1	R4B
41	FATA	WAZIR-N\$	MIR ALI	FT/64/13/056	M	10	10-Sep-13	3	0	Y	Y	Y	N	NSL1	R4B
42	SINDH	KHIGADAP	GADAP	SD/63/13/022	M	12	19-Sep-13	0	6^	Y	Y	Y	N	NSL1	R4B
43	FATA	WAZIR-N\$	MIR ALI	FT/64/13/068	F	16	20-Sep-13	0	0	Y	Y	Y	N	NSL1	R4B
44	FATA	WAZIR-N\$	MIR ALI	FT/64/13/069	F	12	20-Sep-13	0	0	Y	Y	Y	N	NSL1	R4B

\$ Security compromised area

^Under investigation

* Afp.rec Data as of 19-12-2013

Table 1.2: List of Confirmed Polio Cases, Pakistan 2013* (3/4)

S.NO.	PROVINCE/ REGION	DISTRICT	TEHSIL	EPID NO.	SEX	AGE (m)	DATE ONSET OF PARALYSIS	NO. OPV DOSES (based on parents recall)		FEVER	Asymmetric Paralysis	Rapid Progression	REFUSAL	W/PV TYPE	GENETICS
								Route	SIA's						Cluster
45	FATA	FR BANNU	FR BANNU	FT/69/13/013	F	12	22-Sep-13	0	0	Y	Y	Y	N	NSL1	R4B
46	FATA	KHYBER\$	BARA	FT/34/13/030	M	15	24-Sep-13	3	0	Y	Y	Y	N	NSL1	R4B
47	KP	PESHAWAR	PESHAWAR	KP/30/13/079	M	8	24-Sep-13	3	7^	Y	N	Y	N	NSL1	R4B
48	FATA	KHYBER\$	BARA	FT/34/13/033	M	30	26-Sep-13	3	3	Y	Y	Y	N	NSL1	R4A
49	FATA	WAZIR-N\$	MIR ALI	FT/64/13/071	M	8	26-Sep-13	0	0	Y	Y	Y	N	NSL1	R4B
50	PUNJAB	SHEIKUPURA	MURIDKE	PB/33/13/057	M	12	26-Sep-13	0	2	Y	N	Y	N	NSL1	R4B
51	FATA	FR BANNU	FR BANNU	FT/69/13/016	F	24	28-Sep-13	0	0	Y	Y	Y	N	NSL1	R4B
52	FATA	WAZIR-N\$	MIR ALI	FT/64/13/074	F	37	28-Sep-13	0	0	Y	Y	Y	N	NSL1	R4B
53	FATA	FR BANNU	FR BANNU	FT/69/13/017	M	11	01-Oct-13	0	0	Y	Y	Y	N	NSL1	R4B
54	SINDH	KASHMORE	TANGWANI	SD/54/13/010	F	10	03-Oct-13	2	5	N	N	N	N	NSL1	R3B
55	FATA	KHYBER\$	LANDI KOTAL	FT/34/13/036	M	12	05-Oct-13	0	7^	Y	Y	Y	N	NSL1	R4B
56	PUNJAB	TTSINGH	KAMALIA	PB/52/13/045	M	9	09-Oct-13	3	4	Y	N	Y	N	NSL1	R4B
57	FATA	WAZIR-N\$	MIR ALI	FT/64/13/084	F	18	09-Oct-13	0	0	Y	Y	Y	N	NSL1	R4B
58	FATA	WAZIR-N\$	RAZMAK	FT/64/13/083	M	15	11-Oct-13	0	0	Y	Y	Y	N	NSL1	R4B
59	FATA	WAZIR-N\$	MIR ALI	FT/64/13/087	F	13	14-Oct-13	0	0	Y	Y	Y	N	NSL1	R4B
60	FATA	KHYBER\$	BARA	FT/34/13/040	M	9	15-Oct-13	0	0	Y	Y	Y	N	NSL1	R4A
61	FATA	WAZIR-N\$	MIR ALI	FT/64/13/086	M	15	16-Oct-13	0	0	Y	Y	Y	N	NSL1	R4B
62	SINDH	BIN QASIM	BIN QASIM	SD/62/13/011	M	8	18-Oct-13	3	1	Y	Y	Y	N	NSL1	R4B
63	PUNJAB	TTSINGH	KAMALIA	PB/52/13/046	F	13	21-Oct-13	1	5	Y	Y	Y	N	NSL1	R4B
64	PUNJAB	SAHIWAL	SAHIWAL	PB/65/13/047	M	15	21-Oct-13	3	6	Y	N	Y	N	NSL1	R4B
65	FATA	WAZIR-N\$	MIRAN SHAH	FT/64/13/093	M	24	25-Oct-13	0	0	Y	Y	Y	N	NSL1	R4B
66	KP	PESHAWAR	PESHAWAR	KP/30/13/088	M	9	26-Oct-13	0	7^	Y	Y	Y	N	NSL1	R4B

\$ Security compromised area

^Under investigation

* Afp.rec Data as of 19-12-2013

Table 1.3: List of Confirmed Polio Cases, Pakistan 2013* (4/4)

S.NO.	PROVINCE/ REGION	DISTRICT	TEHSIL	EPID NO.	SEX	AGE (m)	DATE ONSET OF PARALYSIS	NO. OPV DOSES (based on parents recall)		FEVER	Asymmetric Paralysis	Rapid Progression	REFUSAL	WPV TYPE	GENETICS
								Routi ne	SIAs						Cluster
67	FATA	KHYBER\$	LANDI KOTAL	FT/34/13/046	M	16	01-Nov-13	0	7^	Y	Y	Y	N	NSL1	R4B
68	FATA	FR BANNU	FR BANNU	FT/69/13/023	M	14	04-Nov-13	0	0	Y	Y	Y	N	NSL1	R4B
69	FATA	KHYBER\$	LANDI KOTAL	FT/34/13/047	M	12	06-Nov-13	0	0	Y	N	Y	N	NSL1	R4A
70	SINDH	BALDIA	BALDIA	SD/61/13/011	F	4	09-Nov-13	0	0	Y	N	Y	N	NSL1	R4B
71	FATA	WAZIR-N\$	MIRAN SHAH	FT/64/13/107	F	24	11-Nov-13	0	0	Y	N	Y	N	NSL1	R4B
72	FATA	WAZIR-N\$	MIR ALI	FT/64/13/109	M	24	12-Nov-13	0	0	Y	Y	Y	N	NSL1	R4B
73	FATA	WAZIR-N\$	MIRAN SHAH	FT/64/13/113	M	12	15-Nov-13	0	0	Y	Y	Y	N	NSL1	R4B
74	FATA	WAZIR-N\$	MIRAN SHAH	FT/64/13/106	F	36	16-Nov-13	0	0	Y	N	Y	N	NSL1	R4B
75	FATA	WAZIR-N\$	MIR ALI	FT/64/13/116	M	11	26-Nov-13	0	0	Y	Y	Y	N	NSL1	R4B
76	FATA	WAZIR-N\$	MIRAN SHAH	FT/64/13/119	M	11	28-Nov-13	0	0	Y	N	Y	N	NSL1	
77	FATA	WAZIR-N\$	MIRAN SHAH	FT/64/13/120	F	12	01-Dec-13	1	0	Y	Y	Y	N	NSL1	

\$ Security compromised area

New Case

^Under investigation

* Afp.rec Data as of 19-12-2013

Table 2: LAB Update 2013*

Month of Onset	AFP Cases	No virus isolated	Cases Under Process		Isolated Viruses from stools						
			Culture	ITD	Vaccine viruses		NPEV		Wild	Results within 14 days	
			n	n	n	%	n	%	n	n	%
January	333	275	0	0	19	6	37	11%	2	333	100%
February	330	285	0	0	16	5	26	8%	3	330	100%
March	308	248	0	0	7	2	52	17%	1	308	100%
April	352	244	0	0	22	6	84	24%	2	352	100%
May	419	304	0	0	15	4	91	22%	9	419	100%
June	469	326	0	0	21	4	118	25%	4	469	100%
July	391	239	0	0	13	3	135	35%	4	391	100%
August	459	292	0	0	24	5	135	29%	8	459	100%
September	466	297	0	0	32	7	119	26%	19	467	100%
October	407	306	2	0	25	6	62	15%	14	407	100%
November	367	259	10	0	27	7	62	17%	10	358	98%
December	123	33	77	3	5	4	4	3%	1	43	35%
Pakistan	4424	3108	89	3	226	5	925	21%	77	4336	98%

* Data as of 23-12-2013

Table 3: Urgent / ITD Pending Cases (1/1)

S. #	Basic information									OPV doses				Urgent		Prov Diagnosis	Lab update			Remarks
	District	Tehsil	Union council	Epid number	Date of Onset	Age (M)	Sex	Date of 1st stool	Stool Adeq	RI	SIAs	Last 6 SIAs	Last dose	By Field	By NSC		Lab No.	Days Inoc	Culture update	
Isolates pending for ITSD																				
1	WAZIR-N	MIRAN SHAH	SHNA KHURA	FT/64/13/118	03-Dec-13	18	F	05-Dec-13	Y	0	0	0		Y	Y	SUSPECTED POLIO	5637	5	P2	Discordant O
2	WAZIR-N *	MIR ALI	IDAK	FT/64/13/125	08-Dec-13	18	M	15-Dec-13	Y	0	0	0		Y	Y	GBS/ SUSPECTED POLIO	5778	5	L20B+	
3	WAZIR-S	WANA	TOI KHULA	FT/65/13/014-C2		58	M	08-Dec-13	-	-	-			-	-		5681	6	L20B+	BAN ON CAMP
4	BHAKKAR §	KALOOR KOT	#	PB/44/13/039	02-Dec-13	11	F	07-Dec-13	Y	3	6	5	18-Nov-13	N	N	GBS	5668	6	SL1	Waiting rRTPCR for VDPV screening
5	SANGHAR §	SANGHAR	CHOTIARI	SD/32/13/029-C2		36	M	13-Dec-13	-	-	-		20-Nov-13	N	-		5735	3	SL1	Waiting rRTPCR for VDPV screening
Reported urgent (by field / NSC criteria)																				
6	MUZAFFARABAD *	MUZAFFARABAD	GOJRA	AJ/10/13/009	03-Dec-13	108	F	10-Dec-13	Y	3	7+	#		Y	N	MONOPLÉGIA LEFT LOWER LIMB	5699	9	UP	
7	WAZIR-N *	MIRAN SHAH	SPIN WAM	FT/64/13/124	04-Dec-13	10	M	14-Dec-13	N	0	0	0		Y	Y	SUSPECTED POLIO	5801		UP	
8	WAZIR-N *	#	#	FT/64/13/126	09-Dec-13	18	F	13-Dec-13	#	#	#	#		Y	#		5751	5	UP	
9	WAZIR-N *	#	#	FT/64/13/127	10-Dec-13	24	M	14-Dec-13	#	#	#	#		Y	#		5752	5	UP	
10	WAZIR-N *	RAZMAK	DOSALI	FT/64/13/129	22-Nov-13	12	M	16-Dec-13	N	0	0	0		Y	N	POLIO	5818		UP	
11	WAZIR-S §	WANA	TOI KHULA	FT/65/13/014	04-Dec-13	12	F	08-Dec-13	Y	0	0	0		N		GBS	5679	6		NVI BUT CONTACT IS L20B+ POSITIVE
12	PESHAWAR	PESHAWAR	ADEZAI	KP/30/13/110	07-Dec-13	13	M	13-Dec-13	Y	0	0	0		Y	Y	SUSPECTED POLIO	5748	5	UP	SERVICE DELIVER ISSUES
13	LAHORE *	GULBERG TOWN	32	PB/31/13/118	03-Dec-13	4	F	11-Dec-13	Y	2	3	3	19-Nov-13	N	Y	MENINGITIS	5728	7	UP	
14	LAHORE *	NISHTAR TOWN	144	PB/31/13/122	10-Dec-13	4	M	13-Dec-13	Y	2	2	2	19-Nov-13	N	Y	HYPOKALEMIA	5755	5	UP	
<p>* New addition § New results #Data not available † NSC Criteria = Fever , Rapid Progress, Age < 48 months and OPV Doses <7 UP = Under process</p> <p style="text-align: center;">Urgent (Field/NSC) / Inadequate specimens / Age 12-35 months / Zero OPV dose † Pending for genomic sequencing</p>																				

* Data as of 23-12-2013

Summary of Laboratory data for Environmental Surveillance- Pakistan (Jan 2012 to date)

Report for Epidemiological week= 50 (08 Dec – 14, 2013)



- Wild poliovirus type 1 (WPV1)
- Wild poliovirus type 3 (WPV3)
- Mixture WPV1 & WPV3
- No WPV Isolated
- X Scheduled sampling, sample not collected
- No sampling scheduled
- Mixture WPV1 & VDPV type 2

SUMMARY

Total Sites = 23

Total Samples Collected (2011-2012-2013) = 706

Total Samples with results available = 687

Total samples positive for Wild PV (2011-2012-2013) = **276** (136+88+52) (WPV1= 273)

Samples Positive for VDPV= 1 (Type 2 VDPV from KHI-Gadaap)

Comparison environmental sampling results 2012-13*

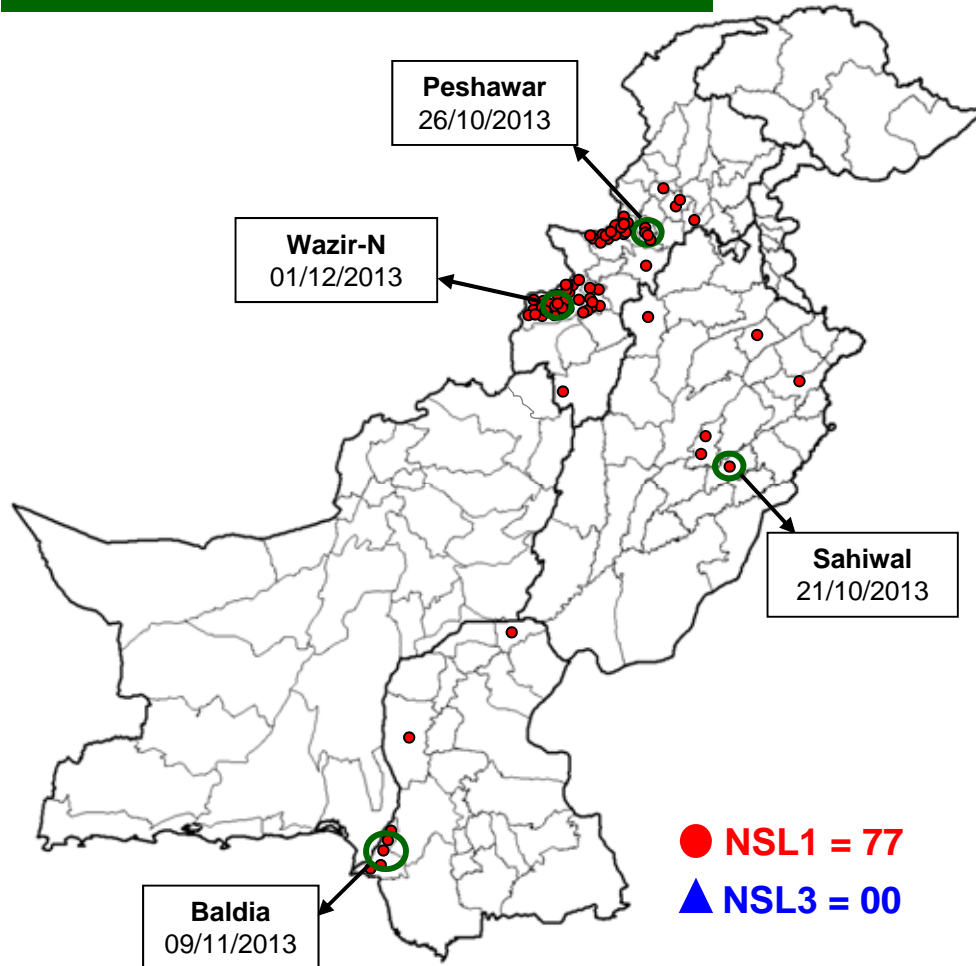
DISTRICT	2012			2013			Last
	TOTAL	WILD		TOTAL	WILD		
	n	n	%	n	n	%	
LAHORE	36	18	50%	59	1	2%	18-Nov-13
MULTAN	35	4	11%	34	1	3%	18-Sep-13
RAWALPINDI	11	7	64%	11	5	45%	25-Nov-13
FAISALABAD	8	1	13%	35	1	3%	03-Jan-13
KHIGIQBAL	23	4	17%	23	4	17%	08-Nov-13
KHIGADAP	23	15	65%	31	12	39%	12-Nov-13
KHIBALDIA	23	1	4%	23	1	4%	25-Oct-13
SUKKUR	16	7	44%	24	0	0%	05-Sep-12
HYDERABAD	6	6	100%	12	7	58%	12-Aug-13
PESHAWAR	23	19	83%	23	19	83%	26-Nov-13
QUETTA	26	3	12%	33	1	3%	20-Feb-13
PAKISTAN	230	85	37%	308	52	17%	26-Nov-13

* Data as of 23-12-2013


Data source Polio RRL

Map1: Distribution of Wild Polio cases Pakistan 2013*

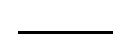
Districts/ Towns with Wild Polio cases = 20



Province/ Country	Date of Last Case		Number of cases 2013	
	P1	P3	P1	P3
PUNJAB	Oct, 2013	Jun, 2010	6	-
SINDH	Nov, 2013	Jan, 2010	7	-
KHYBER- PAKHTUNKHWA	Oct, 2013	Oct, 2010	10	-
FATA	Dec, 2013	Apr, 2012	54	-
BALUCHISTAN	Oct, 2012	Apr, 2010	-	-
AJK	-	Jun, 2000	-	-
GILGIT-BALTISTAN	Aug, 2012	-	-	-
ISLAMABAD	Sep, 2008	Sep, 2008	-	-
PAKISTAN	Dec, 2013	Apr, 2012	77	-

 District with last polio case in province

Cases randomly placed
in districts

 Provincial Boundary
 Districts Boundary

* Afp.rec Data as of 19-12-2013

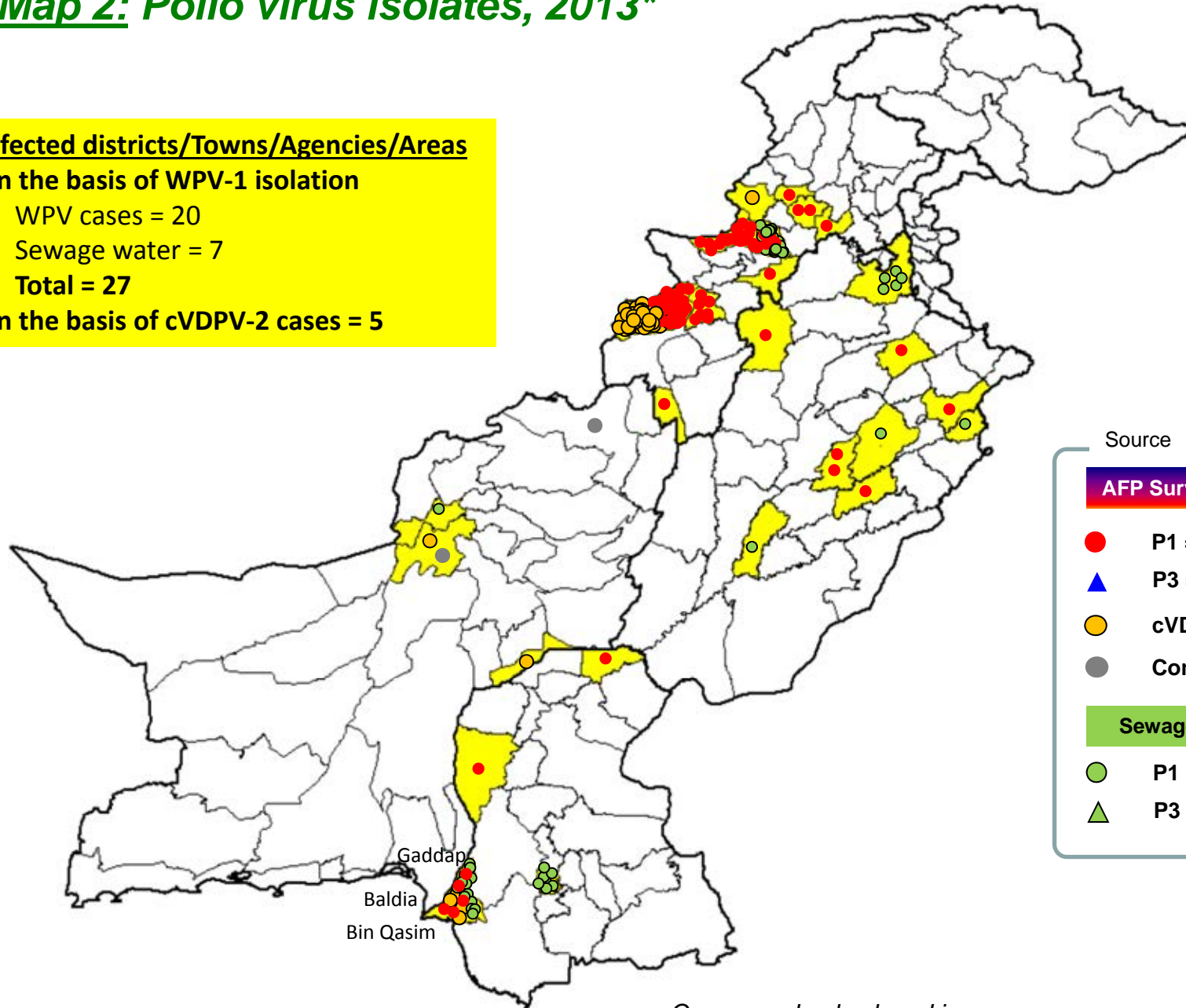
Map 2: Polio virus isolates, 2013*

Infected districts/Towns/Agencies/Areas

On the basis of WPV-1 isolation

- WPV cases = 20
- Sewage water = 7
- Total = 27

On the basis of cVDPV-2 cases = 5



Source

AFP Surveillance

- P1 = 77
- ▲ P3 = 0
- cVDPV-2 = 45
- Compatible = 2

Sewage water

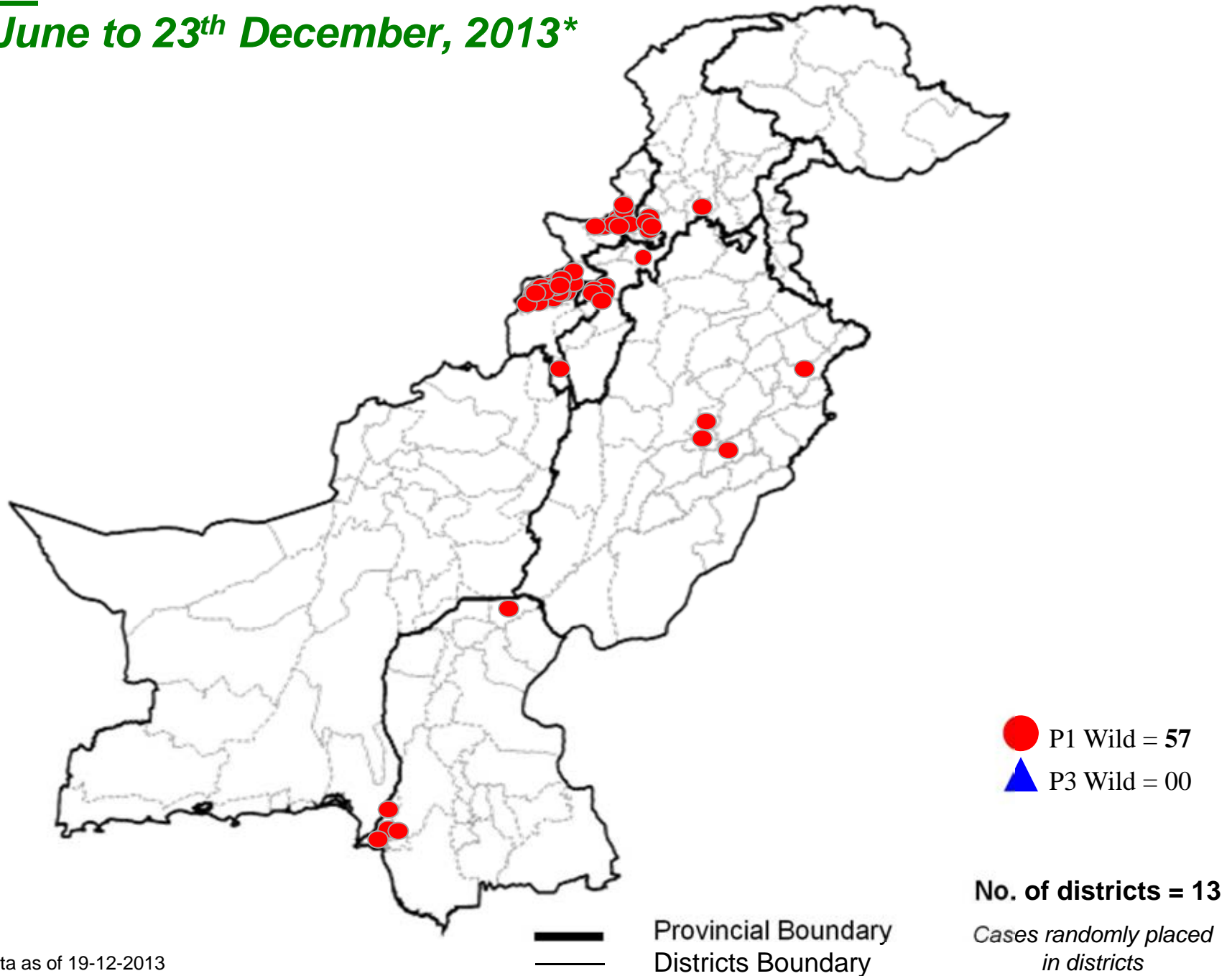
- P1 = 52
- ▲ P3 = 0

- Provincial Boundary
- Districts Boundary

* Afp.rec Data as of 19-12-2013

Cases randomly placed in districts

Map 3: Wild Polio cases in the last 6 months from 24th June to 23th December, 2013*



* Afp.rec Data as of 19-12-2013

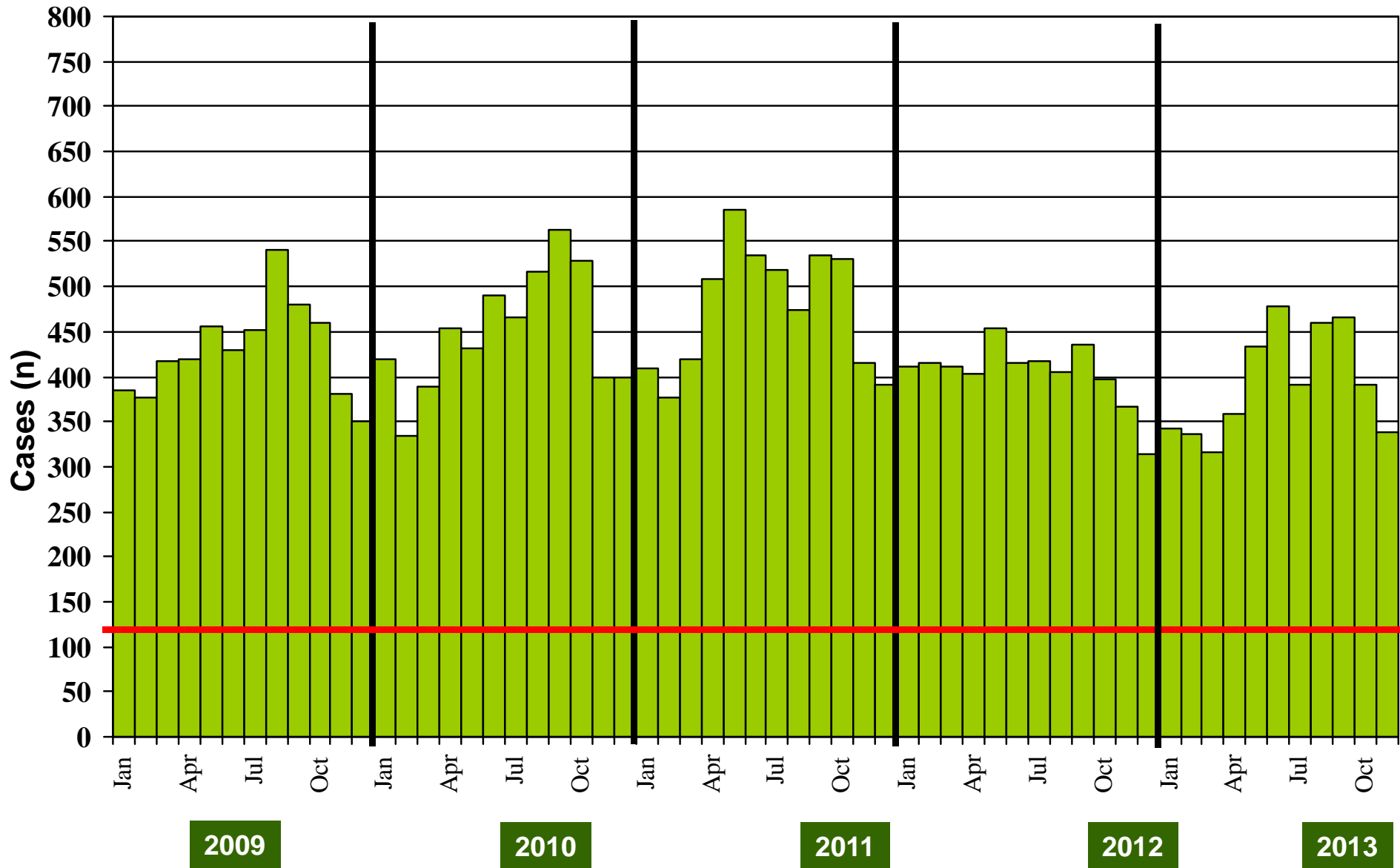
**Table 4: Distribution of AFP Cases By Week of Onset ^
Pakistan 2013* [Week number/Ending on]**

PROVINCE	W 36 07 Sep 2013	W 37 14 Sep 2013	W 38 21 Sep 2013	W 39 28 Sep 2013	W 40 05 Oct 2013	W 41 12 Oct 2013	W 42 19 Oct 2013	W 43 26 Oct 2013	W 44 02 Nov 2013	W 45 09 Nov 2013	W 46 16 Nov 2013	W 47 23 Nov 2013	W 48 30 Nov 2013	W 49 07 Dec 2013	W 50 14 Dec 2013
PUNJAB	49	49	55	54	49	25	26	44	45	42	35	41	28	30	18
SINDH	20	29	24	21	27	12	13	22	11	18	18	24	21	11	7
KP	22	15	18	17	26	18	14	22	27	18	17	14	21	15	4
FATA	13	18	12	16	18	11	6	15	10	3	11	5	3	7	4
BALUCHISTAN	1	5	5	4	5	4	2	5	4	5	3	10	3	5	2
AJK	0	1	0	0	0	0	0	1	1	2	0	1	1	2	0
GILGIT BILTISTAN	1	0	0	0	0	0	0	2	0	2	1	0	1	1	0
ISLAMABAD	0	0	0	0	1	0	0	0	0	0	0	0	0	0	0
PAKISTAN	106	117	114	112	126	70	61	111	98	90	85	95	78	71	35

* Afp.rec & Afplab.rec: Data as of 19-12-2013

^ MMWR Epidemiological Weeks

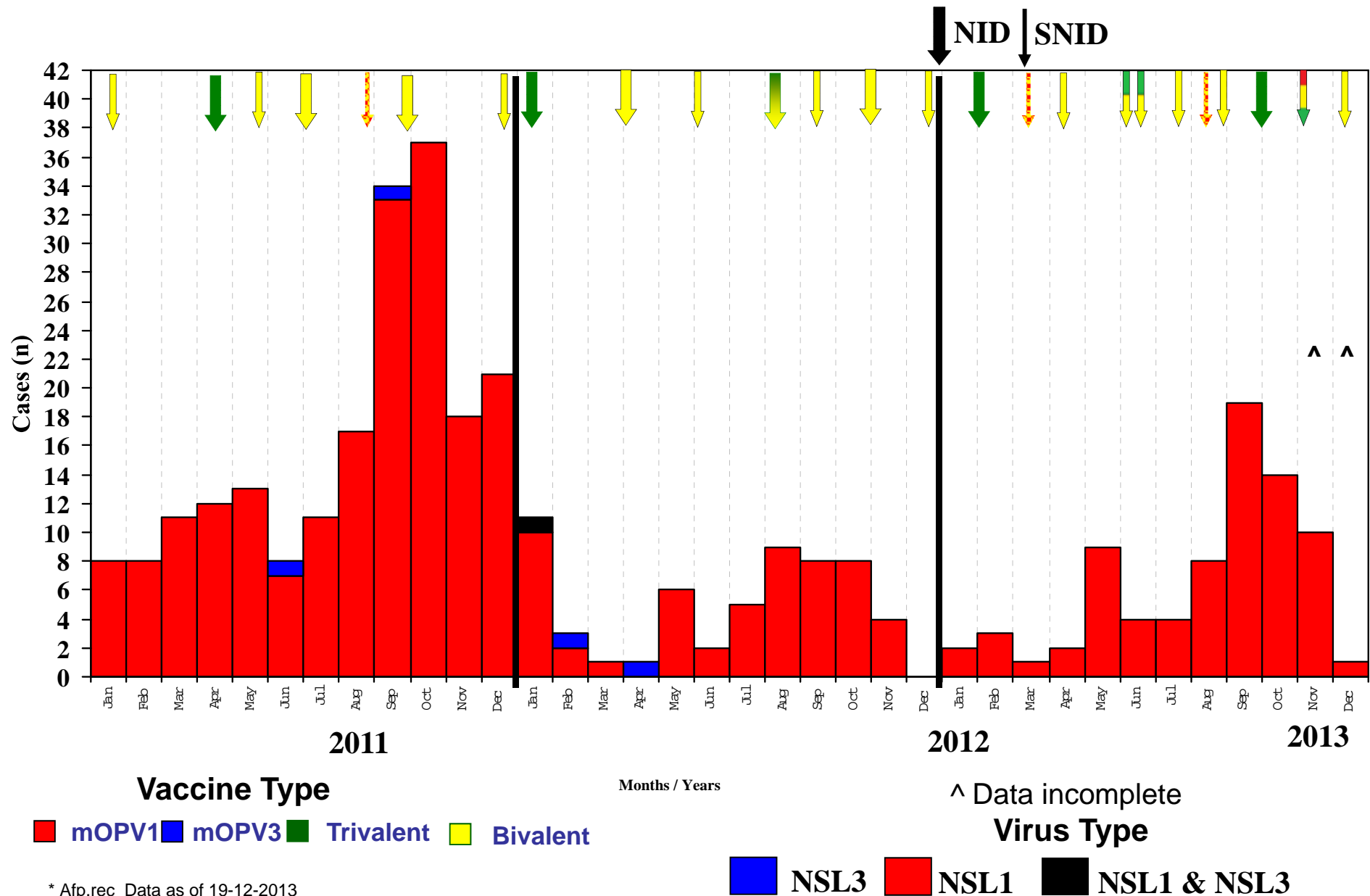
Graph 1: Distribution of AFP Cases by Month, Pakistan 2009-2013*



@ Non-polio AFP rate of 2/100,000 children < 15 years

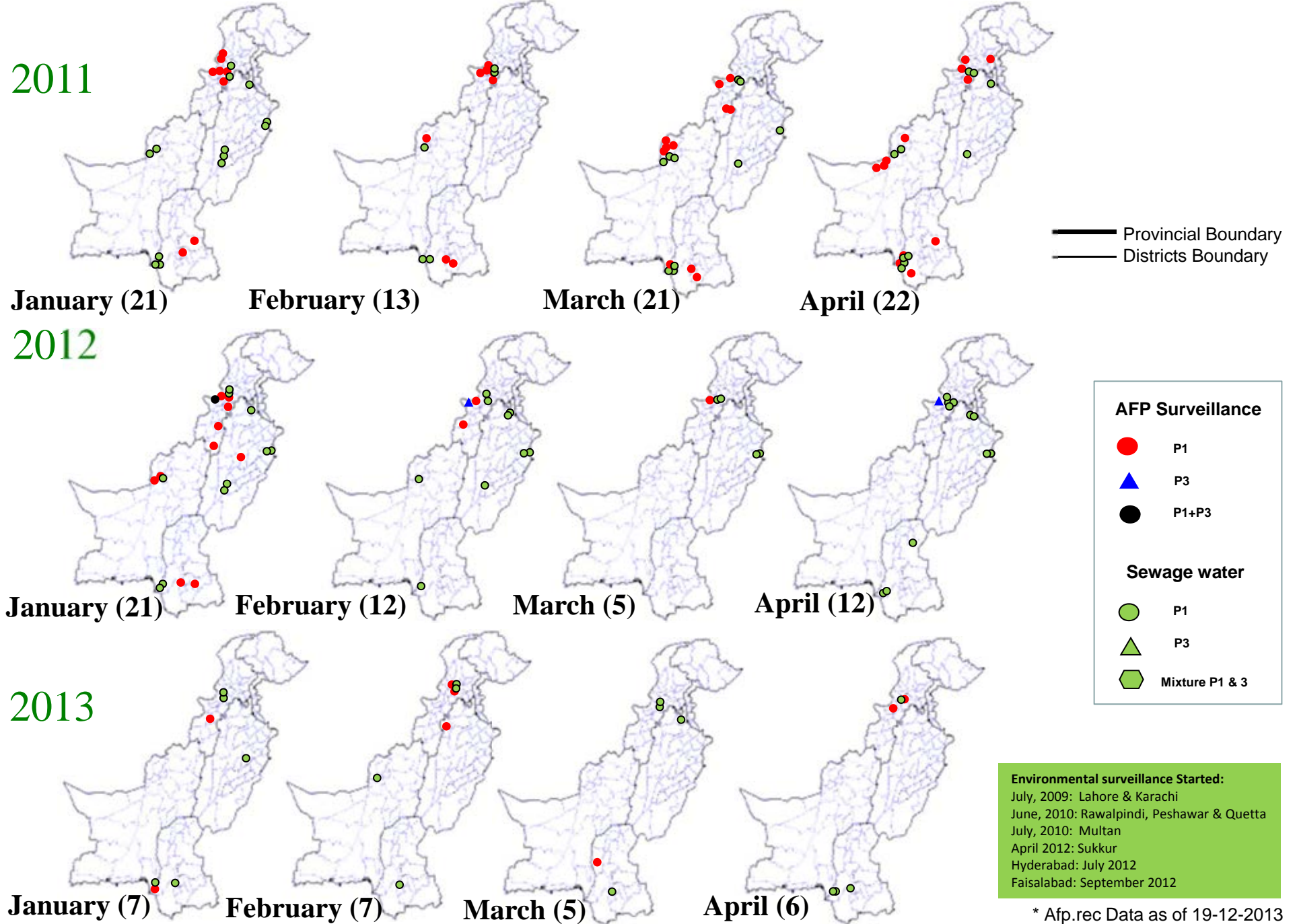
* Afp.rec Data as of 19-12-2013

Confirmed Polio Cases By Poliovirus Type, 2011-2013*



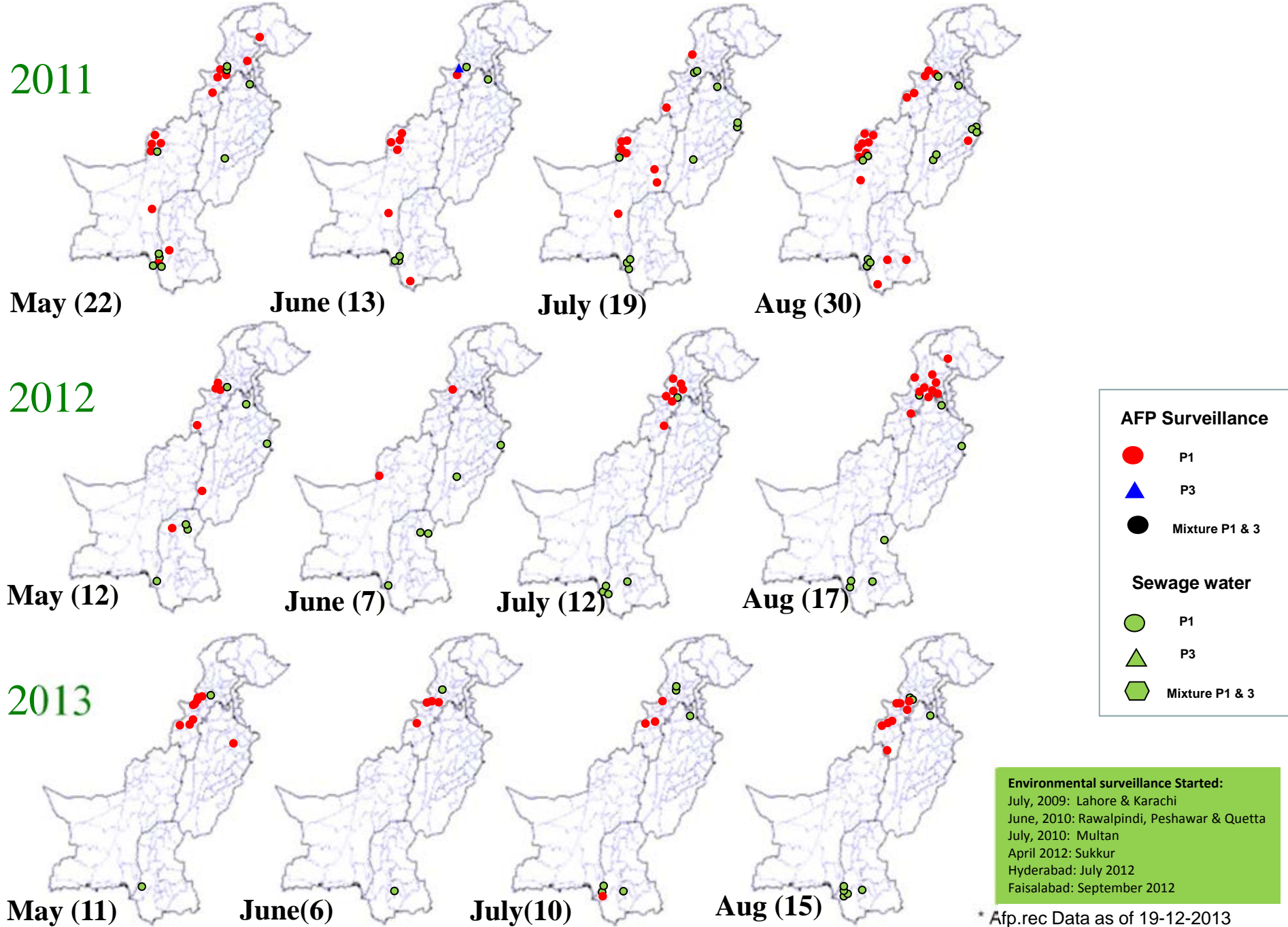
* Afp.rec Data as of 19-12-2013

Map 4: Monthly Comparison of P1 & P3 Polio Cases/Isolates 2011-2013*



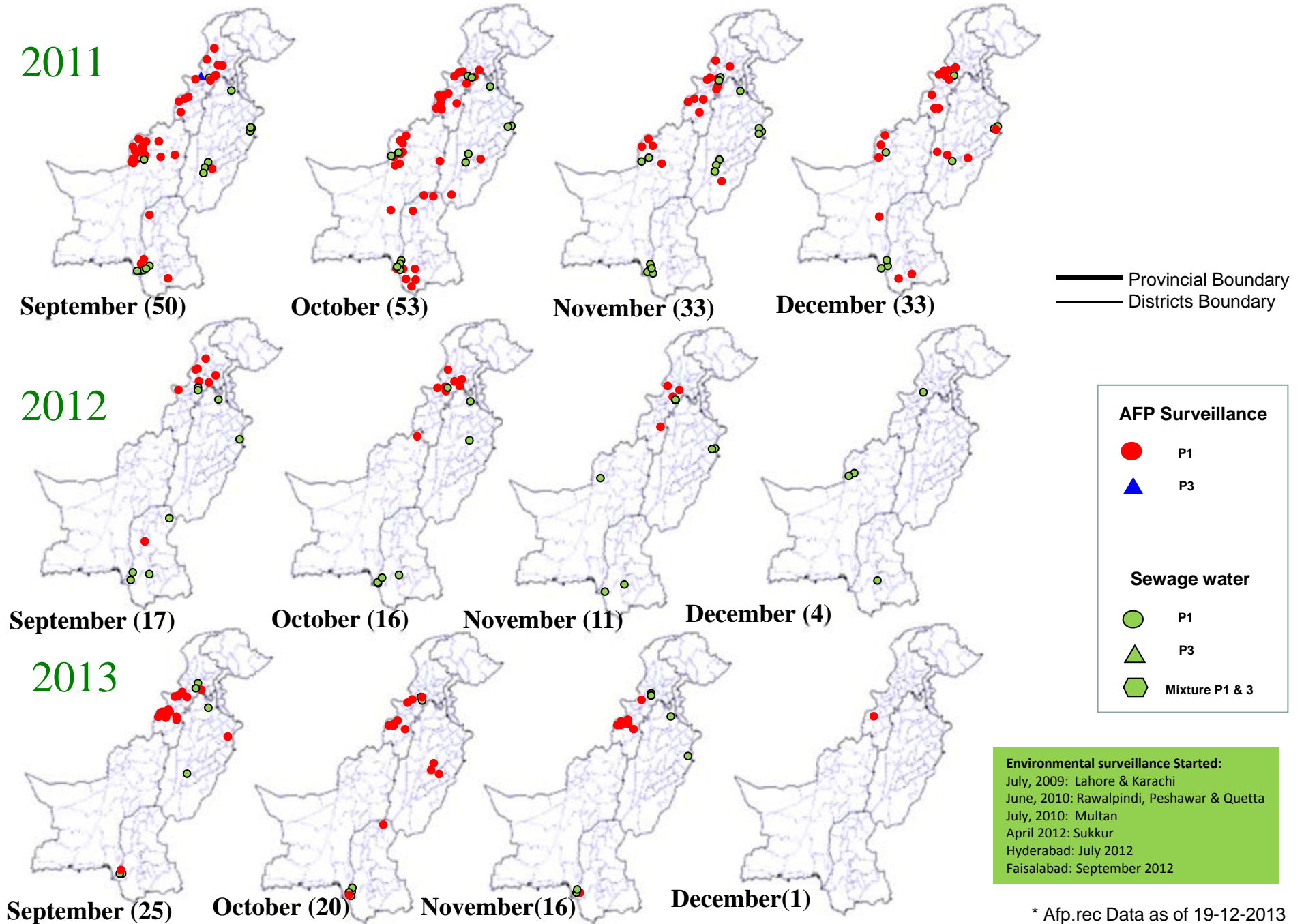
* Afp.rec Data as of 19-12-2013

Map 4.1: Monthly Comparison of P1 & P3 Polio Cases/Isolates 2011-2013*



* Afp.rec Data as of 19-12-2013

Map 4.2: Monthly Comparison of P1 & P3 Polio Cases/Isolates 2011-2013*

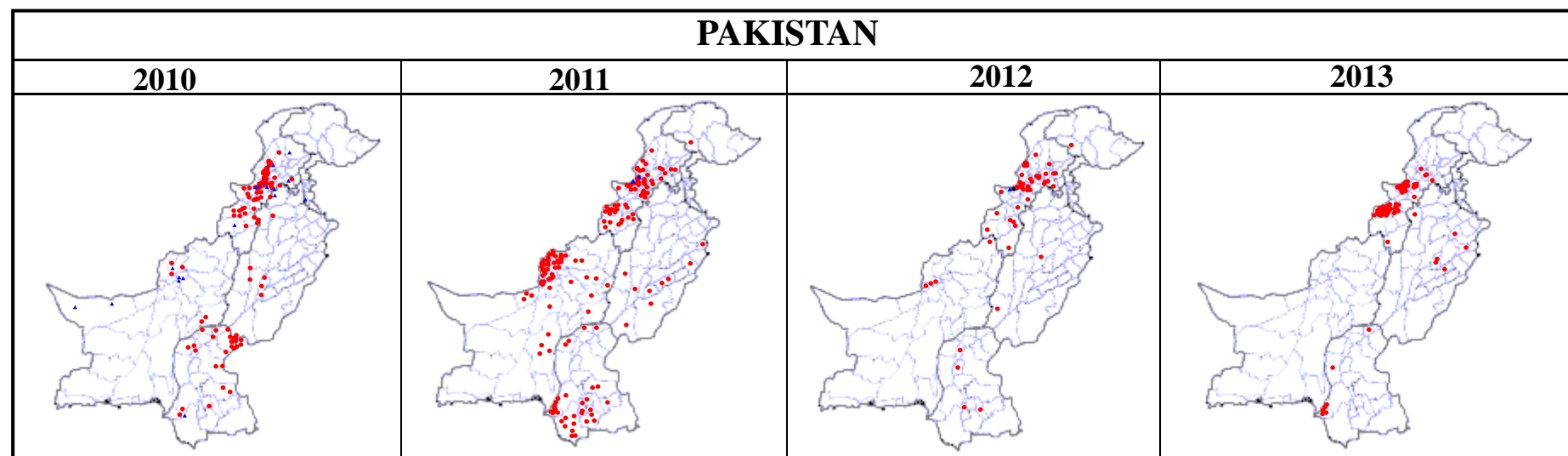


* Afp.rec Data as of 19-12-2013

Table 5: Polio Eradication Update, Pakistan 2010-2013*

Province/Region	Polio 1				Polio 3				Total Wild			
	2010	2011	2012	2013	2010	2011	2012	2013	2010	2011	2012	2013
PUNJAB	6	9	2	6	1	0	-	-	7	9	2	6
SINDH	26	33	4	7	1	0	-	-	27	33	4	7
KP	19	23	27	10	5	0	-	-	24	23	27	10
FATA^	63	57	17	54	11	2	2	-	74	59	20^	54
BALUCHISTAN	6	73	4	-	6	0	-	-	12	73	4	-
AJK	0	0	-	-	0	0	-	-	0	0	-	-
Gilgit-Baltistan	0	1	1	-	0	0	-	-	0	1	1	-
ISLAMABAD	0	0	-	-	0	0	-	-	0	0	-	-
PAKISTAN	120	196	55	77	24	2	2	-	144	198	58	77

^ FATA reported mixture of NSL1 & NSL3



* Afp.rec Data as of 19-12-2013

Table 6: Vaccination status of non polio AFP cases age 6-59 months 2010-2013*

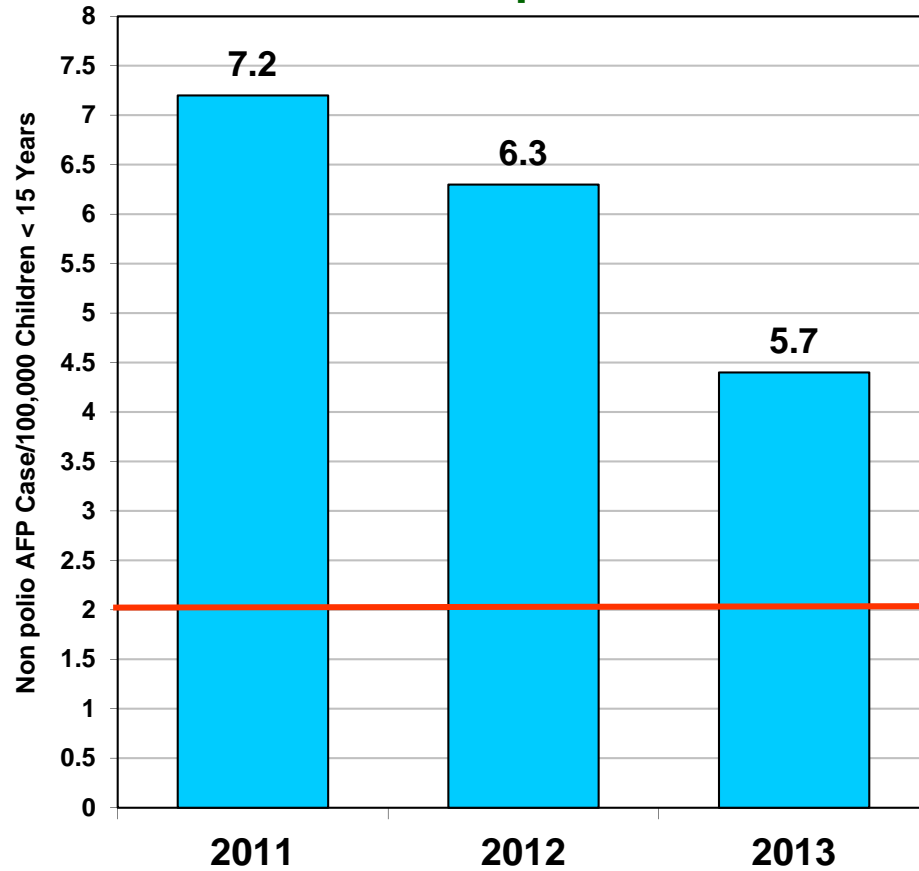
REGION	0 dose				1-2 doses				3 doses				4-6 doses				7+ doses			
	10	11	12	13	10	11	12	13	10	11	12	13	10	11	12	13	10	11	12	13
Central Punjab	0%	0%	0%	0%	1%	1%	0%	0%	1%	2%	0%	1%	7%	6%	4%	8%	91%	92%	95%	91%
North Punjab	0%	0%	0%	0%	0%	1%	0%	0%	2%	1%	0%	0%	6%	5%	4%	4%	91%	93%	96%	96%
South Punjab	0%	0%	0%	0%	1%	0%	0%	0%	0%	1%	0%	0%	5%	5%	4%	6%	94%	93%	96%	94%
PUNJAB	0%	0%	0%	0%	1%	1%	0%	0%	1%	1%	0%	0%	6%	5%	4%	6%	92%	93%	96%	93%
Karachi	2%	4%	1%	1%	0%	1%	1%	5%	3%	0%	2%	0%	7%	6%	6%	5%	88%	88%	90%	89%
North Sindh	0%	0%	0%	0%	1%	1%	0%	0%	0%	0%	1%	0%	4%	5%	4%	6%	95%	94%	94%	95%
South Sindh	0%	1%	0%	0%	1%	1%	1%	0%	1%	0%	2%	1%	9%	6%	4%	8%	89%	93%	93%	91%
SINDH	1%	1%	0%	0%	1%	1%	1%	1%	1%	0%	1%	1%	7%	6%	4%	6%	91%	92%	93%	92%
Central Khyber Pakhtunkhwa	1%	1%	2%	2%	0%	1%	1%	1%	1%	0%	0%	1%	2%	3%	2%	2%	97%	95%	95%	95%
North Khyber Pakhtunkhwa	2%	1%	2%	0%	1%	2%	2%	1%	2%	1%	2%	1%	6%	7%	9%	6%	89%	90%	85%	93%
South Khyber Pakhtunkhwa	3%	2%	2%	1%	3%	4%	1%	0%	3%	4%	1%	1%	14%	7%	9%	5%	76%	83%	87%	93%
Khyber Pakhtunkhwa	1%	1%	2%	1%	1%	2%	1%	1%	2%	1%	1%	1%	6%	5%	6%	4%	90%	91%	89%	94%
FATA	14%	14%	18%	42%	11%	10%	6%	6%	6%	5%	3%	6%	18%	11%	12%	6%	51%	61%	62%	40%
North Balochistan	12%	4%	12%	10%	0%	12%	10%	10%	4%	23%	3%	3%	12%	12%	17%	29%	72%	50%	57%	47%
Quetta Block	0%	31%	14%	8%	11%	10%	10%	8%	0%	3%	0%	0%	9%	14%	14%	22%	81%	43%	62%	62%
Rest of Balochistan	6%	7%	9%	5%	2%	2%	6%	3%	2%	5%	5%	5%	11%	10%	10%	23%	78%	76%	70%	62%
BALOCHISTAN	5%	16%	8%	6%	4%	6%	8%	6%	2%	6%	3%	4%	11%	12%	17%	21%	78%	60%	64%	63%
PAKISTAN	1%	2%	1%	3%	1%	1%	1%	1%	1%	1%	1%	1%	7%	6%	5%	6%	89%	89%	92%	89%

* Afp.rec Data as of 19-12-2013

Key Surveillance Indicators; 2011-2013*

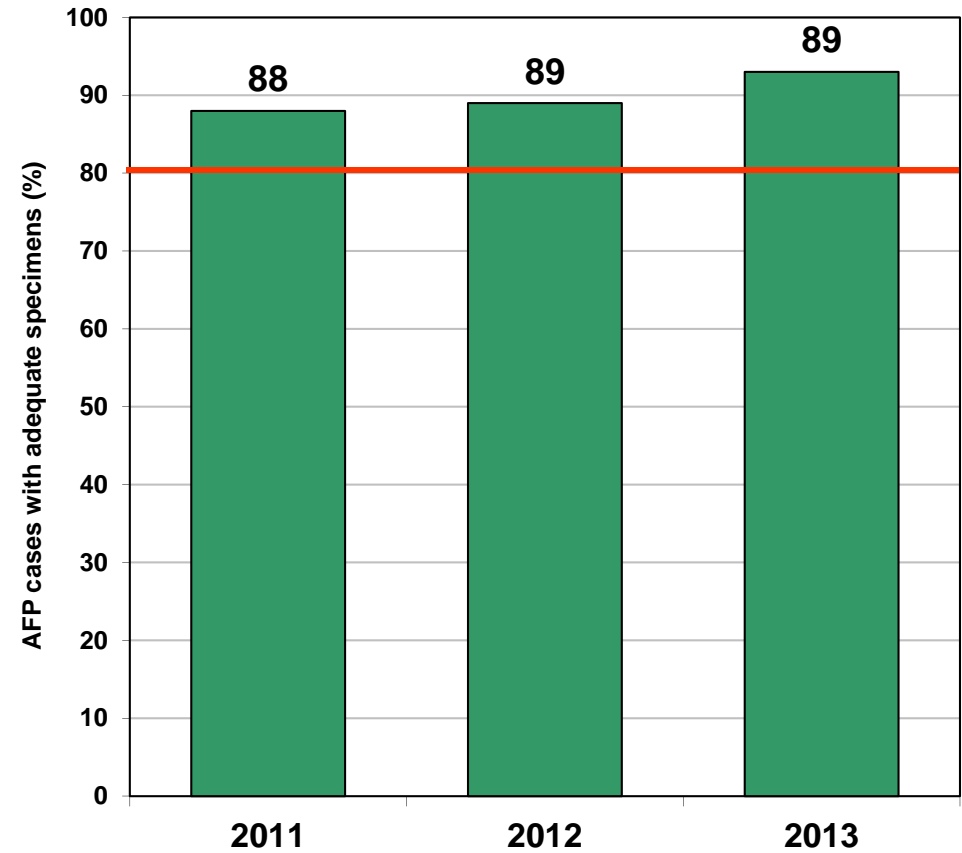
(Non polio AFP rate and % AFP cases with adequate specimens)

Graph 3



■ Non Polio AFP Rate

Graph 4



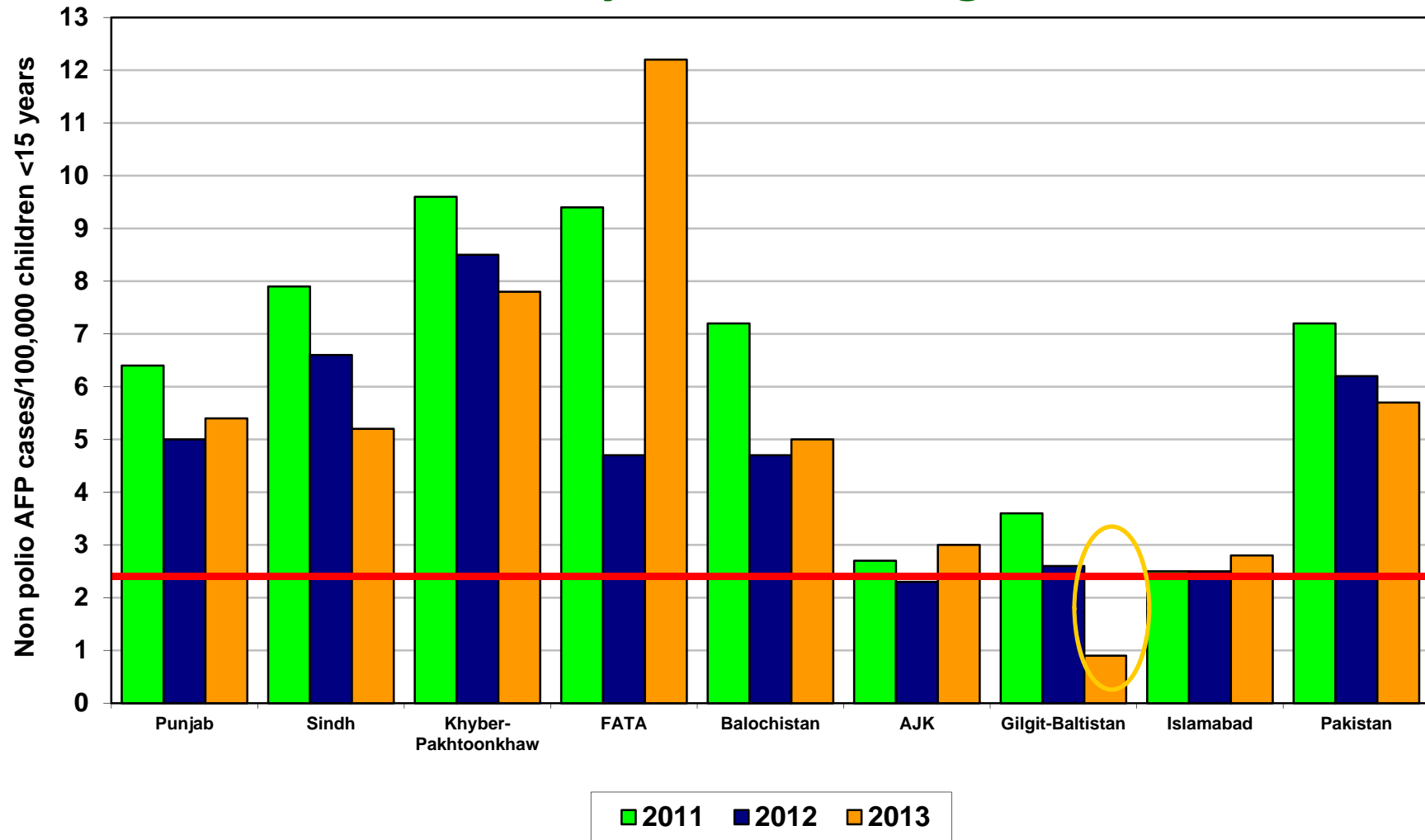
■ % AFP with Adequate Specimens

— Target

Non Polio AFP rate Up to Week No. 50 ended on 14th December, 2013

* Afp.rec Data as of 19-12-2013

Non Polio AFP Rate By Province/Regions, 2011-2013*

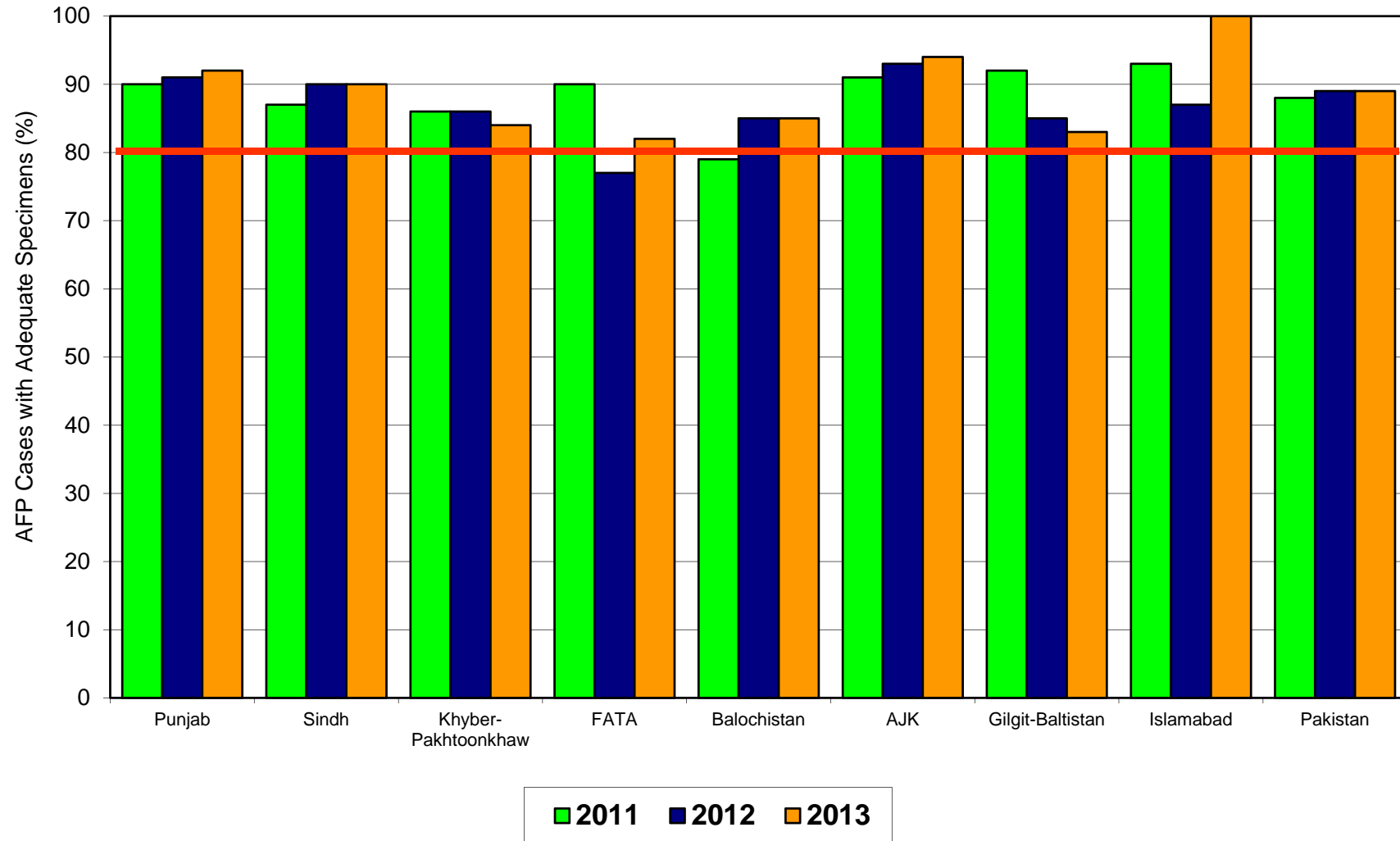


Non Polio AFP rate Up to Week No. 50 ended on 14th December, 2013

Target Non-Polio AFP Rate 2/ 100000 < 15 years of the age

* Afp.rec Data as of 19-12-2013

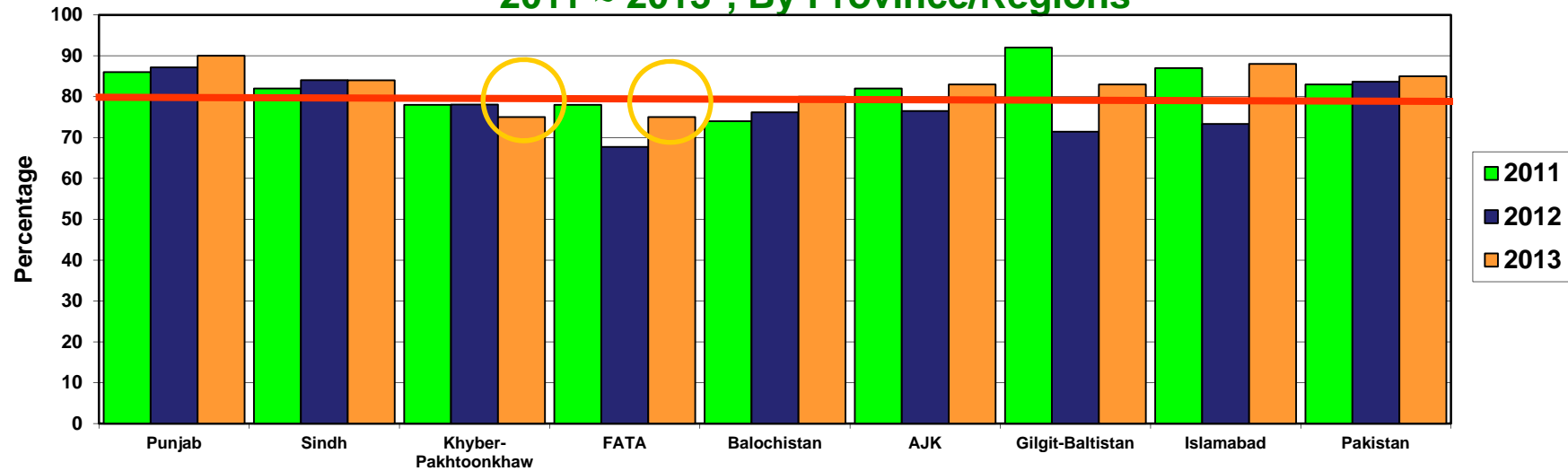
Percent AFP Cases with Adequate Specimens By Province/Regions, 2011-2013*



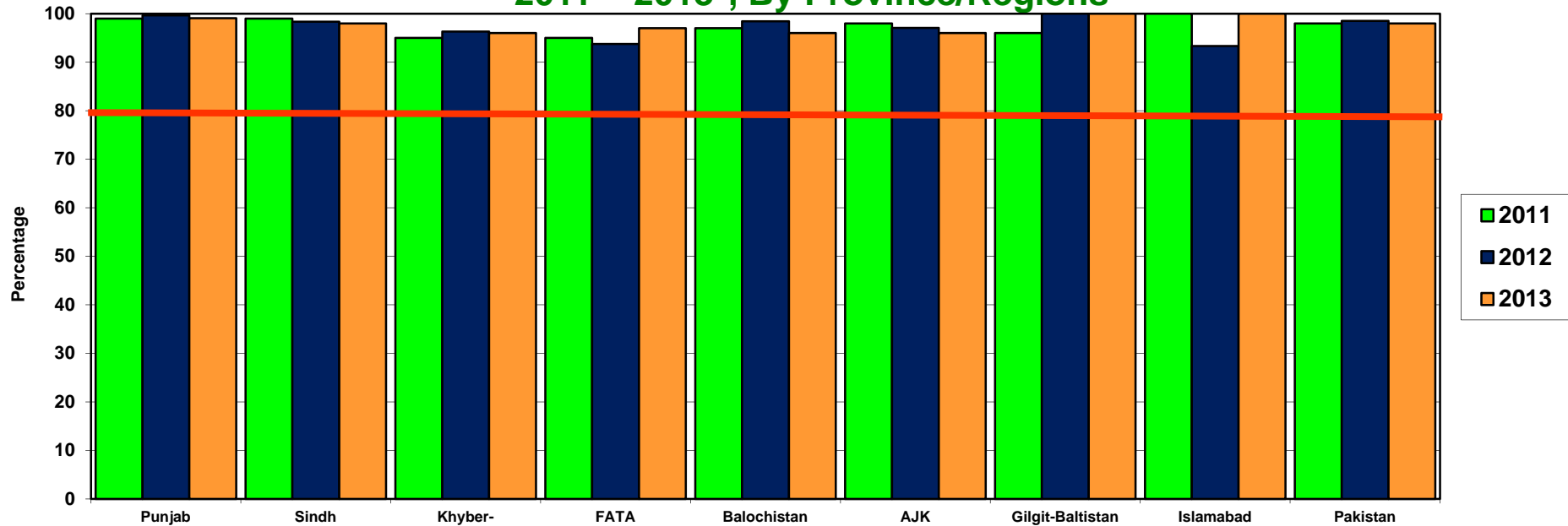
* Afp.rec Data as of 19-12-2013

Target Adequate Sample cases = 80%

**Graph 5: Percent AFP Cases Notified within 07 days of paralysis onset
2011 ~ 2013*, By Province/Regions**



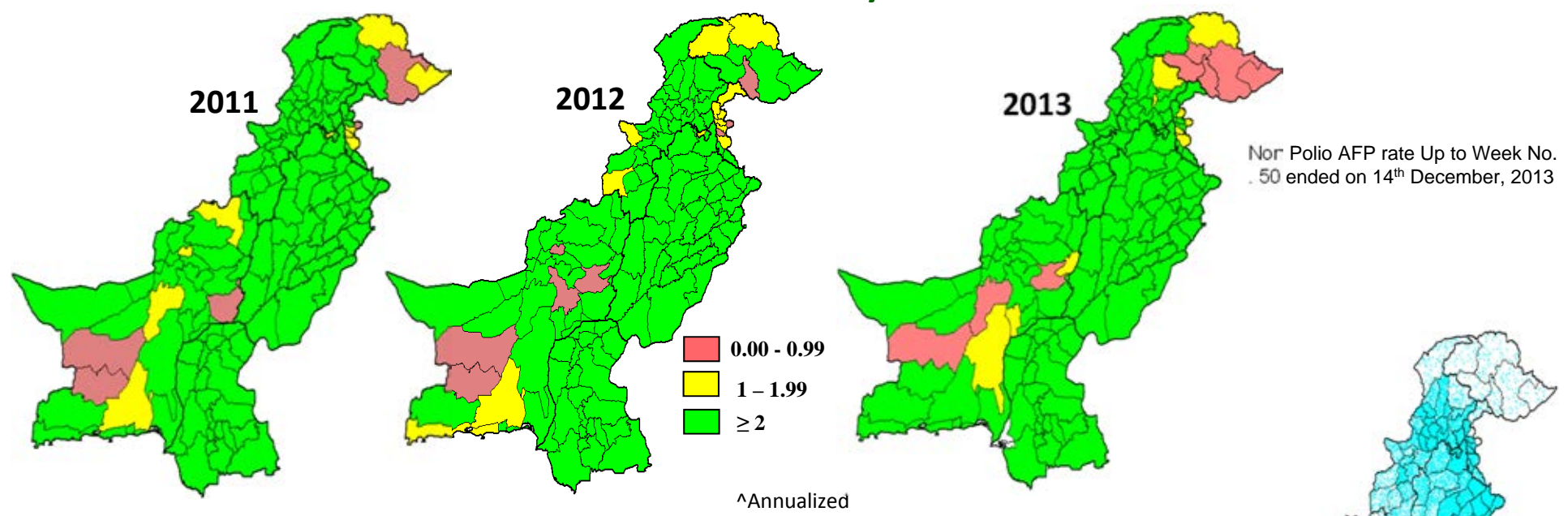
**Graph 6: Percent AFP Cases Investigated within 48 hours of notification
2011 ~ 2013*, By Province/Regions**



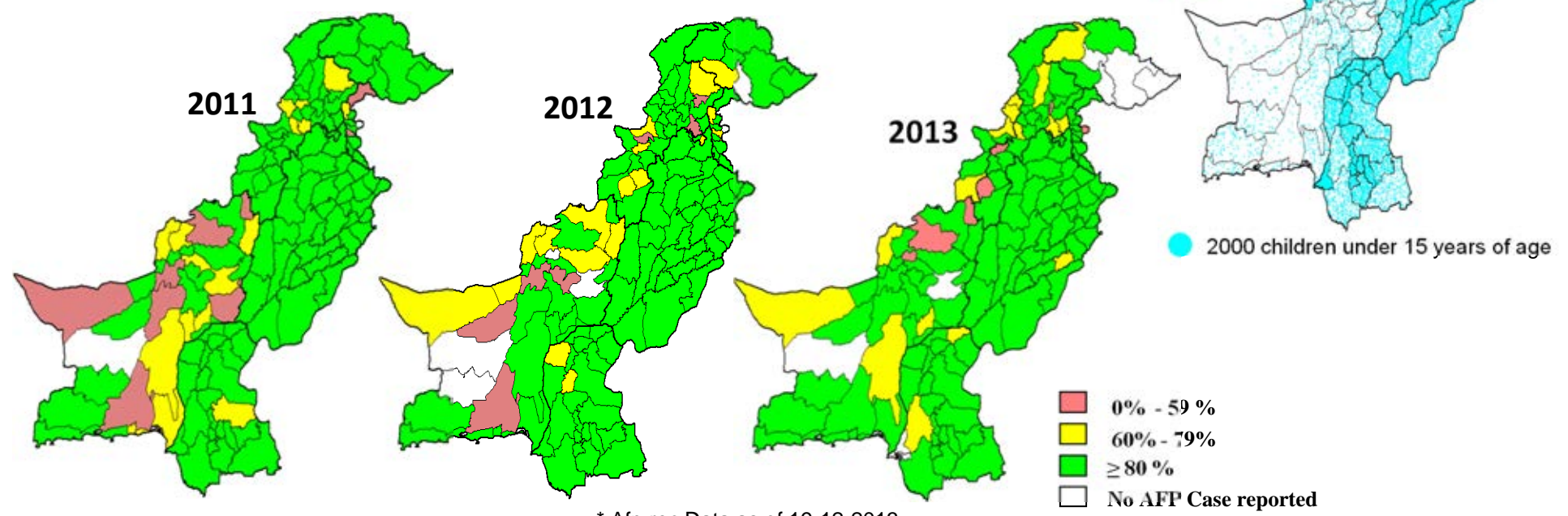
* Afp.rec Data as of 19-12-2013

— Target

Non-Polio[^] AFP Rate by District



Percent AFP Cases with Adequate Specimens, by District



* Afp.rec Data as of 19-12-2013

Table 7: AFP CASES PENDING FOR CLASSIFICATION WITH DATE OF ONSET MORE THAN 90 DAYS* 2013 (1/4)

S. No	DISTRICT	TEHSIL	EPID	SEX	AGE	DONSET	DOSE€	DSTOOL1	DSTOOL2	LAB	FEVER	ASVM	PROG	FUP	PEND (DAYS)
1	KARAK	KARAK	KP/51/13/005	F	13	01-01-13	7+	15-02-13	17-02-13	EV	N	Y	Y	Y	352
2	MARDAN	MARDAN	KP/40/13/007	M	29	17-01-13	7+	06-02-13	07-02-13	EV	Y	Y	Y	Y	336
3	PESHAWAR	PESHAWAR	KP/30/13/008	M	96	15-01-13	7+	26-02-13	27-02-13	NVI	N	N	Y	Y	338
4	SWAT	SWAT	KP/24/13/004	M	120	20-02-13	7+	Child Died Before Stool Collection			Y	N	Y	DIED	302
5	WAZIR-N	MIRAN SHAH	FT/64/13/001	M	96	08-02-13	6	13-02-13		NVI	Y	N	Y	DIED	314
6	BAHAWALPUR	HASILPUR	PB/71/13/029	F	18	27-06-13	7+	24-07-13	25-07-13	EV	Y	Y	Y	Y	175
7	BAHWLNAGAR	MINCHINABAD	PB/73/13/038	F	120	08-06-13	7+	29-06-13	01-07-13	EV	N	N	Y	Y	194
8	BAHWLNAGAR	FORTABBAS	PB/73/13/043	M	102	23-06-13	7+	Child Died Before Stool Collection			Y	N	Y	DIED	179
9	CHINIOT	BHOWANA	PB/54/13/026	M	144	01-09-13	3	19-10-13	20-10-13	NVI	Y	N	Y	Y	109
10	FAISALABAD	TANDLIAN WALA	PB/51/13/049	F	18	22-05-13	7+	27-06-13	28-06-13	NVI	Y	Y	UK	Y	211
11	FAISALABAD	FAISALABAD CITY	PB/51/13/061	F	144	01-08-13	7+	Child Died Before Stool Collection			N	N	Y	DIED	140
12	FAISALABAD	FAISALABAD SADAR	PB/51/13/066	M	3	17-08-13	3	01-09-13	03-09-13	NVI	Y	Y	Y	DIED	124
13	FAISALABAD	FAISALABAD CITY	PB/51/13/086	F	120	01-08-13	7+	Late Notified			Y	Y	Y	Y	140
14	GUJRANWALA	KHIALI SHAHPUR	PB/21/13/055	M	96	14-06-13	7+	03-07-13	05-07-13	NVI	Y	Y	Y	Y	188
15	GUJRANWALA	KAMOKE	PB/21/13/090	M	96	25-06-13	7+	Late Notified			N	Y	Y	Y	177
16	JHANG	JHANG	PB/53/13/045	M	54	13-09-13	7+	Child Died Before Stool Collection			Y	Y	Y	DIED	97
17	JHELUM	SOHAWA	PB/14/13/026	M	108	19-08-13	7+	Child Died Before Stool Collection			N	N	Y	DIED	122
18	KHANEWAL	KABIRWALA	PB/62/13/042	F	108	28-06-13	7+	07-07-13		NVI	Y	N	Y	DIED	174
19	KHANEWAL	JAHANIAN	PB/62/13/047	M	120	29-06-13	7+	29-07-13	31-07-13	NVI	Y	N	Y	Y	173
20	KHANEWAL	KABIRWALA	PB/62/13/049	M	120	06-07-13	7+	28-08-13	29-08-13	NVI	Y	Y	Y	Y	166
21	KHUSHAB	KHUSHAB	PB/42/13/014	F	42	25-08-13	7+	07-09-13	10-09-13	EV	Y	N	Y	Y	116
22	LAHORE	SHALAMAR TOWN	PB/31/13/095	F	108	17-09-13	7+	Child Died Before Stool Collection			Y	N	Y	DIED	93
23	LAHORE	NISHTAR TOWN	PB/31/13/097	F	24	10-08-13	7+	27-09-13	28-09-13	EV	N	Y	Y	Y	131
24	LAYYAH	LAYYAH	PB/84/13/024	F	72	28-07-13	7+	Child Died Before Stool Collection			N	N	Y	DIED	144
25	LAYYAH	KAROR LAL ESAN	PB/84/13/029	F	134	07-09-13	0	20-09-13	23-09-13	NVI	Y	N	Y	Y	103
26	LODHRAN	LODHRAN	PB/64/13/034	M	95	04-07-13	7+	18-07-13	25-07-13	NVI	Y	N	Y	Y	168
27	LODHRAN	LODHRAN	PB/64/13/035	M	84	22-05-13	7+	14-07-13	15-07-13	NVI	N	N	Y	Y	211
28	MULTAN	JALALPUR PIRWALA	PB/61/13/046	M	76	18-05-13	7+	17-06-13	19-06-13	NVI	Y	Y	Y	Y	215
29	MULTAN	JALALPUR PIRWALA	PB/61/13/073	M	4	01-08-13	6	06-09-13	08-09-13	NVI	Y	N	Y	Y	140
30	MULTAN	MULTAN SADDAR	PB/61/13/080	F	119	15-08-13	7+	27-09-13	29-09-13	NVI	N	N	Y	Y	126
31	MUZFARGARH	ALIPUR	PB/83/13/076	M	2	08-07-13	1	10-08-13	12-08-13	NVI	N	Y	Y	Y	164
32	MUZFARGARH	KOT ADDU	PB/83/13/081	M	25	13-07-13	7+	22-08-13	24-08-13	NVI	Y	Y	Y	Y	159
33	MUZFARGARH	MUZFARGARH	PB/83/13/096	M	14	17-08-13	7+	04-10-13	05-10-13	VACC	Y	Y	Y	Y	124
34	MUZFARGARH	ALIPUR	PB/83/13/098	M	4	25-08-13	3	08-10-13	09-10-13	EV	Y	Y	Y	Y	116
35	NANKANASAHIB	NANKANASAHIB	PB/35/13/027	F	50	07-08-13	7+	28-09-13	29-09-13	NVI	N	N	Y	Y	134
36	OKARA	DEPALPUR	PB/34/13/031	M	24	27-05-13	7+	07-07-13	08-07-13	EV	N	Y	Y	Y	206
37	PAKPATTEN	PAKPATTAN	PB/66/13/018	M	156	25-07-13	7+	15-08-13	16-08-13	NVI	Y	Y	Y	Y	147
38	PAKPATTEN	PAKPATTAN	PB/66/13/021	M	60	14-06-13	7+	Late Notified			Y	Y	Y	Y	188
39	RAJANPUR	RAJANPUR	PB/82/13/036	F	6	03-06-13	5	07-07-13	08-07-13	EV	Y	Y	Y	Y	199
40	RAJANPUR	RAJANPUR	PB/82/13/046	F	12	07-08-13	6	29-08-13	30-08-13	NVI	N	N	Y	Y	134
41	RAJANPUR	RAJANPUR	PB/82/13/052	M	60	13-09-13	7+	Child Died Before Stool Collection			N	N	Y	DIED	97
42	RAJANPUR	JAMPUR	PB/82/13/059	M	9	25-08-13	6	10-10-13	13-10-13	NVI	Y	Y	Y	Y	116
43	RAWALPINDI	RAWALPINDI	PB/11/13/028	M	132	13-05-13	7+	03-06-13	05-06-13	NVI	N	N	Y	Y	220
44	RAWALPINDI	MURREE	PB/11/13/041	M	177	05-07-13	7+	23-07-13	24-07-13	NVI	N	N	Y	Y	167

€ Based on recall of parents

* Afp.rec Data as of 19-12-2013

60 days Follow-up not done

FUP = Residual Weakness at 60 days follow up.

Table 7.1: AFP CASES PENDING FOR CLASSIFICATION WITH DATE OF ONSET MORE THAN 90 DAYS* 2013 (2/4)

S. No	DISTRICT	TEHSIL	EPID	SEX	AGE	DONSET	DOSESE	DSTOOL1	DSTOOL2	LAB	FEVER	ASVM	PROG	FUP	PEND (DAYS)
45	RAWALPINDI	RAWALPINDI	PB/11/13/047	M	87	09-08-13	7+	Child Died Before Stool Collection			Y	N	Y	DIED	132
46	RAWALPINDI	TAXILA	PB/11/13/048	M	27	13-08-13	7+	Child Died Before Stool Collection			N	N	Y	DIED	128
47	RAWALPINDI	RAWALPINDI	PB/11/13/050	F	102	15-08-13	7+	24-08-13		NVI	N	N	Y	DIED	126
48	RAWALPINDI	TAXILA	PB/11/13/058	M	121	22-08-13	7+	02-10-13	04-10-13	NVI	N	N	Y	Y	119
49	SAHIWAL	SAHIWAL	PB/65/13/024	M	120	12-06-13	7+	22-07-13	23-07-13	NVI	Y	Y	Y	Y	190
50	SAHIWAL	CHICHAWATNI	PB/65/13/025	F	6	25-06-13	5	30-07-13	01-08-13	NVI	Y	N	Y	Y	177
51	SARGODHA	BHALWAL	PB/41/13/039	F	10	18-09-13	7+	02-10-13	04-10-13	EV	N	N	N	Y	92
52	SHEIKUPURA	FEROZEWALA	PB/33/13/030	M	144	22-05-13	7+	14-06-13	15-06-13	NVI	N	Y	Y	Y	211
53	SHEIKUPURA	MURIDKE	PB/33/13/038	M	84	03-07-13	7+	11-07-13		NVI	Y	N	Y	DIED	169
54	TTSINGH	GOJRA	PB/52/13/032	M	2	24-06-13	3	25-07-13	27-07-13	EV	Y	N	Y	Y	178
55	VEHARI	VEHARI	PB/63/13/055	M	84	11-08-13	7+	14-08-13		NVI	N	N	Y	DIED	130
56	GHOTKI	KHANGARH	SD/42/13/052	M	72	21-07-13	7+	30-08-13	31-08-13	NVI	Y	N	Y	Y	151
57	HYDERABAD	HYDERABAD RURAL	SD/21/13/006	M	84	01-04-13	7+	Child Died Before Stool Collection			Y	N	Y	DIED	262
58	JACOBABAD	THUL	SD/53/13/013	M	156	16-05-13	7+	11-06-13	15-06-13	NVI	Y	Y	Y	Y	217
59	JACOBABAD	THUL	SD/53/13/017	M	10	26-06-13	7+	26-07-13	27-07-13	EV	Y	Y	Y	Y	176
60	JAMSHORO	T.B.KHAN	SD/25/13/009	F	18	03-05-13	7+	25-05-13	12-06-13	NVI	N	N	Y	Y	230
61	KAMBAR	WARAH	SD/55/13/006	M	96	01-01-13	7+	Late Notified			N	Y	Y	Y	352
62	KASHMORE	KANDHKOT	SD/54/13/002	M	54	27-05-13	7+	Late Notified			N	N	Y	LOST	206
63	KHIBALDIA	BALDIA	SD/61/13/005	F	36	18-06-13	4	Child Died Before Stool Collection			N	N	Y	DIED	184
64	KHIBINQASIM	BINQASIM	SD/62/13/012	M	96	19-09-13	7+	17-11-13	18-11-13	NVI	Y	N	Y		91
65	KHIGADAP	GADAP	SD/63/13/010	F	42	02-06-13	7+	Child Died Before Stool Collection			Y	N	Y	DIED	200
66	KHIGADAP	GADAP	SD/63/13/021	F	10	23-08-13	1	23-09-13	24-09-13	NVI	Y	Y	Y	Y	118
67	KHIGADAP	GADAP	SD/63/13/027	M	11	10-09-13	7+	17-11-13	18-11-13	NVI	Y	Y	Y		100
68	KHIJAMSHEED	JAMSHEED	SD/66/13/004	F	60	01-05-13	7+	Child Died Before Stool Collection			Y	N	Y	DIED	232
69	KHIKAMARI	KAMARI	SD/67/13/005	M	108	25-06-13	7+	07-07-13	15-07-13	NVI	Y	Y	Y	Y	177
70	KHISADDAR	SADDAR	SD/77/13/004	F	38	05-04-13	7+	10-05-13	11-05-13	NVI	N	N	Y	Y	258
71	NFEROZ	BHIRIA	SD/45/13/003	F	144	05-02-13	7+	Child Died Before Stool Collection			Y	Y	Y	DIED	317
72	NFEROZ	MORO	SD/45/13/013	F	54	10-05-13	7+	01-06-13	02-06-13	NVI	N	Y	Y	Y	223
73	SANGHAR	KHIPRO	SD/32/13/005	M	144	05-03-13	7+	Late Notified			N	N	Y	Y	289
74	SANGHAR	KHIPRO	SD/32/13/024	F	60	15-09-13	7+	01-10-13	02-10-13	NVI	Y	Y	Y	Y	95
75	T.ALLAHYAR	TANDO ALLAHYAR	SD/27/13/009	M	4	28-05-13	4	24-06-13	25-06-13	NVI	Y	Y	Y	Y	205
76	T.ALLAHYAR	J.MUREE	SD/27/13/010	M	72	13-06-13	7+	Child Died Before Stool Collection			Y	Y	Y	DIED	189
77	T.ALLAHYAR	J.MUREE	SD/27/13/015	M	60	21-08-13	7+	03-09-13	05-09-13	NVI	N	Y	Y	Y	120
78	THATTA	THATTA	SD/22/13/032	M	72	06-06-13	7+	15-07-13	16-07-13	NVI	Y	Y	Y	Y	196
79	UMERKOT	UMER KOT	SD/34/13/026	M	2	06-09-13	1	17-09-13		EV	Y	N	Y	DIED	104
80	ABOTABAD	HAVALIAN	KP/10/13/017	M	96	23-07-13	7+	14-08-13	15-08-13	NVI	Y	N	Y	Y	149
81	ABOTABAD	ABBOTABAD	KP/10/13/021	M	49	27-07-13	7+	16-08-13	17-08-13	EV	N	N	N		145
82	ABOTABAD	HAVALIAN	KP/10/13/027	F	72	18-08-13	7+	Late Notified			N	Y	Y		123
83	BANNU	BANNU	KP/61/13/010	M	53	30-04-13	7+	Late Notified			Y	N	N	Y	233
84	BUNIR	DAGGAR	KP/22/13/008	M	35	12-03-13	7+	01-04-13	02-04-13	NVI	Y	Y	Y	Y	282
85	BUNIR	DAGGAR	KP/22/13/007	M	132	28-02-13	7+	30-03-13	31-03-13	NVI	N	N	Y	Y	294
86	BUNIR	DAGGAR	KP/22/13/015	M	72	01-01-13	7+	Late Notified			Y	Y	Y	Y	352
87	CHARSADA	CHARSADA	KP/31/13/049	F	72	10-08-13	7+	24-08-13	27-08-13	NVI	Y	Y	Y		131
88	CHARSADA	SHABQADAR	KP/31/13/052	F	39	27-08-13	7+	10-09-13	11-09-13	NVI	Y	Y	Y		114

€ Based on recall of parents

* Afp.rec Data as of 19-12-2013

60 days Follow-up not done

FUP = Residual Weakness at 60 days follow up.

Table 7.2: AFP CASES PENDING FOR CLASSIFICATION WITH DATE OF ONSET MORE THAN 90 DAYS* 2013 (3/4)

S. No	DISTRICT	TEHSIL	EPID	SEX	AGE	DONSET	DOSESE	DSTOOL1	DSTOOL2	LAB	FEVER	ASYM	PROG	FUP	PEND (DAYS)
89	CHARSADA	CHARSADA	KP/31/13/053	M	18	03-08-13	7+	03-09-13	04-09-13	NVI	Y	Y	Y		138
90	DIKHAN	KULACHI	KP/60/13/013	F	18	22-04-13	5	16-06-13	17-06-13	VACC	N	Y	Y	Y	241
91	DIKHAN	DIKHAN	KP/60/13/014	M	54	17-06-13	7+	20-06-13		NVI	Y	Y	Y	DIED	185
92	DIRLOWER	SAMAR BAGH	KP/23/13/015	F	13	30-01-13	7+	Late Notified			Y	Y	Y	Y	323
93	DIRLOWER	SAMAR BAGH	KP/23/13/033	F	96	25-07-13	7+	05-09-13	07-09-13	NVI	Y	Y	Y	Y	147
94	DIRLOWER	TIMERGARA	KP/23/13/034	M	30	08-08-13	7+	16-09-13	17-09-13	NVI	Y	Y	Y	Y	133
95	DIRUPPER	DIR	KP/25/13/006	F	21	25-07-13	7+	08-08-13	10-08-13	EV	UK	Y	Y		147
96	HANGU	HANGU	KP/54/13/005	M	12	21-06-13	7+	08-07-13	09-07-13	EV	Y	Y	Y		181
97	HANGU	HANGU	KP/54/13/004	F	30	05-06-13	7+	05-07-13	06-07-13	EV	Y	N	Y	Y	197
98	HANGU	HANGU	KP/54/13/008	M	36	03-07-13	7+	24-07-13		EV	Y	N	Y		169
99	HANGU	HANGU	KP/54/13/012	F	24	29-08-13	7+	16-09-13	18-09-13		Y	Y	N		112
100	HARIPUR	HARIPUR	KP/12/13/005	M	66	18-01-13	7+	19-02-13	20-02-13	EV	N	N	Y	Y	335
101	HARIPUR	HARIPUR	KP/12/13/012	F	20	18-04-13	7+	19-05-13	20-05-13	EV	Y	Y	Y	Y	245
102	HARIPUR	HARIPUR	KP/12/13/019	F	20	28-06-13	7+	18-08-13	19-08-13		Y	Y	Y		174
103	KOHAT	LACHI	KP/50/13/012	M	96	28-05-13	7+	26-06-13	27-06-13	NVI	N	N	Y	Y	205
104	KOHAT	LACHI	KP/50/13/015	M	21	15-05-13	7+	Late Notified			Y	Y	Y	Y	218
105	LAKKIMRWT	LAKKIMRWT	KP/62/13/018	M	26	22-05-13	7+	21-06-13	22-06-13		N	Y	Y	Y	211
106	LAKKIMRWT	LAKKIMRWT	KP/62/13/030	F	28	11-09-13	7+	01-10-13	03-10-13	NVI	N	N	Y	Y	99
107	MANSEHRA	MANSEHRA	KP/14/13/005	M	168	17-03-13	7+	26-10-13	28-10-13		N	N	Y	DIED	277
108	MANSEHRA	MANSEHRA	KP/14/13/010	F	9	01-06-13	6	17-06-13	19-06-13	NVI	Y	N	Y	DIED	201
109	MANSEHRA	MANSEHRA	KP/14/13/019	F	24	13-07-13	7+	Child Died Before Stool Collection			UK	UK	Y	DIED	159
110	MARDAN	TAKHT BHAI	KP/40/13/034	M	5	10-03-13	6	Late Notified			N	Y	UK	Y	284
111	MARDAN	MARDAN	KP/40/13/059	F	24	25-07-13	7+	21-08-13	22-08-13	NVI	Y	Y	Y	Y	147
112	MARDAN	MARDAN	KP/40/13/063	M	108	15-08-13	7+	29-08-13	31-08-13	NVI	Y	Y	Y	Y	126
113	MARDAN	MARDAN	KP/40/13/046	F	24	15-06-13	7+	05-07-13	06-07-13	EV	Y	Y	Y	Y	187
114	MARDAN	MARDAN	KP/40/13/074	F	24	02-08-13	7+	11-09-13	13-09-13	NVI	N	Y	Y	Y	139
115	MARDAN	MARDAN	KP/40/13/077	F	32	02-09-13	7+	24-09-13	25-09-13	NVI	Y	Y	Y	Y	108
116	MARDAN	MARDAN	KP/40/13/073	M	23	15-06-13	7+	Late Notified			UK	Y	UK	Y	187
117	NOWSHERA	NOWSHERA	KP/32/13/012	F	108	15-03-13	7+	Child Died Before Stool Collection			Y	N	Y	DIED	279
118	NOWSHERA	NOWSHERA	KP/32/13/029	M	14	28-07-13	7+	17-08-13	18-08-13	EV	Y	Y	Y		144
119	NOWSHERA	NOWSHERA	KP/32/13/036	F	30	03-08-13	7+	25-09-13	26-09-13	NVI	Y	Y	Y		138
120	NOWSHERA	NOWSHERA	KP/32/13/031	M	25	25-07-13	7+	21-08-13	22-08-13	EV	Y	Y	Y		147
121	PESHAWAR	PESHAWAR	KP/30/13/022	F	22	06-02-13	7+	Late Notified			N	N	N	Y	316
122	PESHAWAR	PESHAWAR	KP/30/13/026	M	24	17-04-13	0	17-05-13	19-05-13	EV	Y	Y	Y	Y	246
123	PESHAWAR	PESHAWAR	KP/30/13/039	F	54	03-05-13	7+	14-06-13	15-06-13	EV	Y	Y	Y	Y	230
124	PESHAWAR	PESHAWAR	KP/30/13/043	F	66	16-06-13	7+	07-07-13	08-07-13	NVI	Y	Y	Y	Y	186
125	PESHAWAR	PESHAWAR	KP/30/13/052	M	36	13-07-13	7+	27-07-13	28-07-13	EV	N	Y	Y	Y	159
126	PESHAWAR	PESHAWAR	KP/30/13/063	M	14	16-08-13	7+	30-08-13	01-09-13	VACC	Y	N	Y	LOST	125
127	PESHAWAR	PESHAWAR	KP/30/13/069	M	84	29-08-13	7+	13-09-13	14-09-13	NVI	Y	Y	Y	DIED	112
128	PESHAWAR	PESHAWAR	KP/30/13/057	F	21	14-07-13	7+	16-08-13	17-08-13	EV	Y	Y	Y	Y	158
129	PESHAWAR	PESHAWAR	KP/30/13/076	F	24	28-08-13	7+	02-10-13	10-10-13	NVI	Y	N	UK	Y	113
130	PESHAWAR	PESHAWAR	KP/30/13/056	F	24	14-07-13	7+	06-08-13	07-08-13	NVI	N	N	Y	Y	158
131	PESHAWAR	PESHAWAR	KP/30/13/059	M	86	13-06-13	7+	Late Notified			Y	Y	Y	Y	189
132	SHANGLA	MARTOONG	KP/26/13/001	M	72	08-01-13	7+	Late Notified			Y	Y	Y	LOST	345

€ Based on recall of parents

* Afp.rec Data as of 19-12-2013

60 days Follow-up not done

FUP = Residual Weakness at 60 days follow up.

Table 7.3: AFP CASES PENDING FOR CLASSIFICATION WITH DATE OF ONSET MORE THAN 90 DAYS* 2013 (4/4)

S. No	DISTRICT	TEHSIL	EPID	SEX	AGE	DONSET	DOSESE	DSTOOL1	DSTOOL2	LAB	FEVER	ASVM	PROG	FUP	PEND (DAYS)	
133	SHANGLA	CHAKISAR	KP/26/13/008	F	36	01-06-13	7+	27-06-13	31-07-13	NVI	Y	Y	Y	Y	201	
134	SWABI	SWABI	KP/41/13/035	M	36	15-09-13	7+	Late Notified			Y	Y	Y		95	
135	SWAT	SWAT	KP/24/13/006	F	132	02-04-13	7+	10-04-13		NVI	N	N	Y	DIED	261	
136	SWAT	SWAT	KP/24/13/009	M	16	19-04-13	7+	14-05-13	15-05-13	NVI	Y	N	N	Y	244	
137	TANK	TANK	KP/63/13/005	M	42	25-02-13	7+	27-04-13	28-04-13	NVI	Y	N	UK	Y	297	
138	TANK	TANK	KP/63/13/009	M	13	02-08-13	7+	06-09-13	07-09-13	NVI	N	N	Y	Y	139	
139	TANK	TANK	KP/63/13/010	M	24	11-08-13	7+	24-09-13	25-09-13	NVI	Y	Y	Y	Y	130	
140	TORGHAR	TORGHAR	KP/15/13/002	M	132	14-09-13	7+	21-09-13	07-10-13	NVI	Y	Y	Y		96	
141	CHAGHAI	DALBANDIN	BN/13/13/002	F	14	21-08-13	6	Child Died Before Stool Collection			Y	Y	Y	DIED	120	
142	JAFARABAD	SOHBAT PUR	BN/43/13/015	F	30	18-07-13	7+	30-08-13	31-08-13	EV	Y	Y	Y	Y	154	
143	JAFARABAD	SOHBAT PUR	BN/43/13/017	F	2	02-09-13	3	Child Died Before Stool Collection			N	Y	Y	DIED	108	
144	KHUZDAR	NAAL	BN/54/13/002	M	82	23-08-13	4	05-09-13	07-09-13	NVI	Y	N	Y		118	
145	NSIRABAD	DMJAMALI	BN/41/13/010	M	18	08-09-13	7+	Late Notified			Y	N	Y		102	
146	QUETTA	QUETTA CITY	BN/11/13/006	F	9	12-04-13	7+	27-05-13	28-05-13	NVI	N	Y	Y	Y	251	
147	SHARANI	SHARANI	BN/26/13/003	M	48	16-09-13	5	03-10-13	04-10-13	VACC	Y	Y	Y		94	
148	ZIARAT	ZIARAT	BN/32/13/003	M	13	16-09-13	3	08-10-13	09-10-13	NVI	Y	Y	Y		94	
149	GHIZER	PUNIAL	GB/41/13/001	M	66	02-09-13	7+	06-09-13		EV	N	Y	Y	DIED	108	
150	BAJOUR	MAMUND	FT/33/13/007	M	45	02-01-13	7+	Late Notified			N	Y	Y	Y	351	
151	BAJOUR	KHAR	FT/33/13/018	M	22	08-07-13	7+	23-08-13	24-08-13	NVI	Y	Y	Y		164	
152	BAJOUR	MAMUND	FT/33/13/017	F	44	09-07-13	7+	13-08-13	14-08-13	EV	Y	N	N		163	
153	BAJOUR	KHAR	FT/33/13/020	F	12	07-08-13	7+	07-09-13	08-09-13	EV	Y	Y	N		134	
154	BAJOUR	MAMUND	FT/33/13/022	M	17	28-07-13	7+	12-09-13	13-09-13	NVI	N	Y	N		144	
155	BAJOUR	KHAR	FT/33/13/023	F	48	15-08-13	7+	15-09-13	16-09-13	EV	N	N	Y		126	
156	BAJOUR	KHAR	FT/33/13/024	M	36	18-08-13	7+	16-09-13	17-09-13	NVI	Y	Y	Y		123	
157	BAJOUR	MAMUND	FT/33/13/032	M	18	04-09-13	7+	05-10-13	06-10-13	VACC	Y	Y	N		106	
158	FR BANNU	FR BANNU	FT/69/13/007	M	22	30-07-13	3	28-08-13	29-08-13	EV	Y	Y	Y		142	
159	FR BANNU	FR BANNU	FT/69/13/012	M	9	10-08-13	0	22-09-13	23-09-13	EV	Y	Y	Y		131	
160	KHYBER	JAMRUD	FT/34/13/002	F	24	18-01-13	7+	21-02-13	23-02-13	NVI	N	Y	Y	Y	335	
161	KHYBER	JAMRUD	FT/34/13/017	M	14	08-06-13	0	16-06-13		NVI	Y	Y	Y	Y	194	
162	KHYBER	BARA	FT/34/13/016	F	10	06-06-13	0	21-06-13	23-06-13	NVI	Y	Y	Y		196	
163	KHYBER	BARA	FT/34/13/018	M	12	11-06-13	0	01-07-13	02-07-13	EV	Y	Y	Y		191	
164	KHYBER	BARA	FT/34/13/021	F	18	13-07-13	0	25-07-13	29-07-13	NVI	N	N	Y		159	
165	KHYBER	LANDI KOTAL	FT/34/13/044	M	44	30-06-13	7+	Late Notified			Y	Y	Y	Y	172	
166	MOHMAND	PINDIALI	FT/35/13/006	F	17	05-05-13	7+	17-06-13	18-06-13	NVI	Y	Y	Y		228	
167	MOHMAND	UPPER MOHMAND	FT/35/13/003	F	18	18-04-13	7+	07-05-13	08-05-13	NVI	Y	Y	Y	Y	245	
168	MOHMAND	UPPER MOHMAND	FT/35/13/008	M	26	08-05-13	7+	22-06-13	23-06-13		Y	Y	Y		225	
169	WAZIR-N	MIRAN SHAH	FT/64/13/007	M	48	25-04-13	5	10-05-13	12-05-13	NVI	Y	N	Y	Y	238	
170	WAZIR-N	MIR ALI	FT/64/13/030	F	9	09-08-13	0	Late Notified			Y	N	N		132	
171	WAZIR-N	MIR ALI	FT/64/13/042	M	7	03-07-13	0	29-08-13	30-08-13	EV	Y	N	Y		169	
172	WAZIR-N	MIR ALI	FT/64/13/054	F	18	09-09-13	2	Late Notified			Y	N	Y		101	
173	WAZIR-N	MIRAN SHAH	FT/64/13/122	F	13	15-09-13	0				Y	Y	Y	Y		95
174	WAZIR-N	MIRAN SHAH	FT/64/13/121	M	13	25-08-13	0				N	Y	Y	Y		116
175	WAZIR-S	WANA	FT/65/13/006	F	26	13-07-13	7+	15-08-13	16-08-13	NVI	Y	Y	Y		159	
176	WAZIR-S	WANA	FT/65/13/005	F	12	25-04-13	1	19-06-13	20-06-13	NVI	UK	N	UK		238	

€ Based on recall of parents

* Afp.rec Data as of 19-12-2013

60 days Follow-up not done

FUP = Residual Weakness at 60 days follow up.